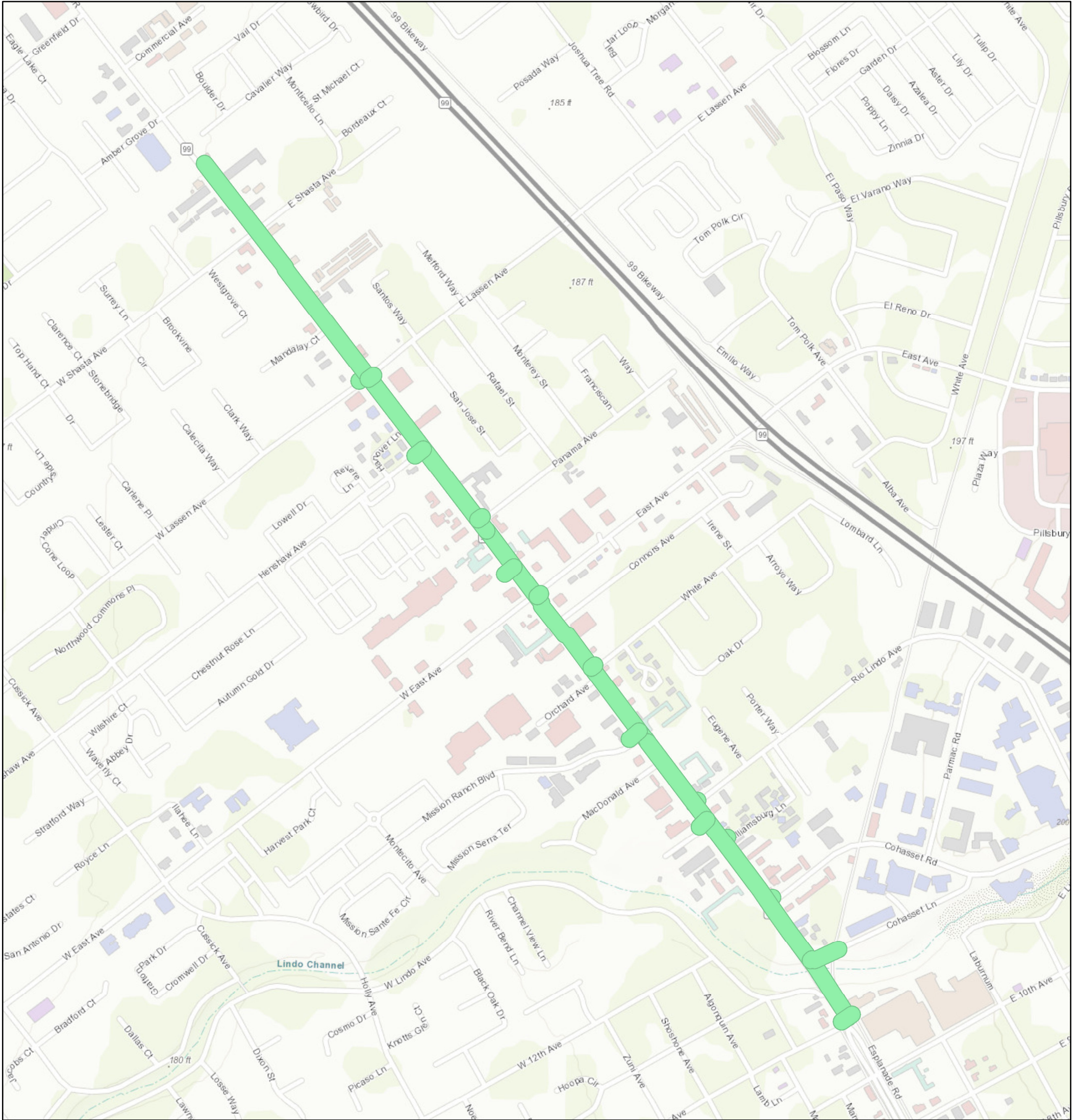
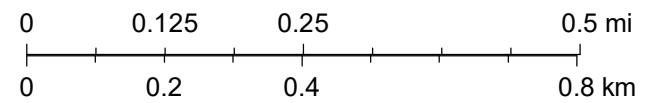


Esplanade Main Replacement Project



11/27/2019, 2:47:41 PM

1:11,000



This map shows the approximate extents of the water main replacement project to occur on Esplanade Avenue.



Sources: Esri, HERE, Garmin, Intermap, increment P Corp., GEBCO, USGS, FAO, NPS, NRCAN, GeoBase, IGN, Kadaster NL, Ordnance Survey, Esri Japan, METI, Esri China (Hong Kong), (c) OpenStreetMap contributors, and the GIS User Community