

Appendix C: Correspondences

- UWMP Notice of Preparation, March 10, 2016
- Growth Projection Letter to Cities and Counties
- UWMP Public Draft Comments

Appendix C: Correspondences

- UWMP Notice of Preparation, March 10, 2016



CALIFORNIA WATER SERVICE

1720 North First Street
San Jose, CA 95112-4598 Tel: (408) 367-8200

March 10, 2016

[Name_F] [Name_L]
[Organization]
[Address]
[City], CA [ZipCode]

Dear [Title] [Name_L]:

California Water Service (Cal Water) is committed to providing safe, reliable, and high-quality water utility service in our Bayshore service area. At Cal Water, one of our top priorities is ensuring that our customers have a sustainable supply of water for decades to come.

With that in mind, we wanted to take this opportunity to let you know that we are updating our Urban Water Management Plan (UWMP) for this service area. This UWMP is reviewed and updated every five years pursuant to the Urban Water Management Plan Act, and will be completed by July 1, 2016. Our UWMP is a foundational document that supports our long-term water resource planning to ensure our customers have adequate water supplies to meet current and future demands.

Proposed revisions to our 2010 UWMP will be made available for public review, and we will be holding a public hearing, during which the updates for the 2015 UWMP will be discussed. The draft 2015 UWMP and the date, time and location of the public hearing will be available on our web site in a few weeks at www.calwater.com/conservation/uwmp. A hard copy of the draft UWMP will also be available at our Bayshore Customer Center located at 341 North Delaware Street, San Mateo, CA 94401.

If you have any questions about the UWMP for this service area, please contact Michael Bolzowski, Cal Water Senior Engineer, at (408) 367-8338 or e-mail Planninginfo@calwater.com.

Sincerely,

A handwritten signature in black ink that reads "Scott Wagner".

Scott Wagner
Director of Capital Planning & Water Resources

Nicole Sandkulla
Senior Water Resources Planning Manager
Bay Area Water Supply and Conservation
Agency
341 North Delaware Street
San Mateo, CA 94401
nsandkulla@bawsca.org
Council Member Del Rosario
Council Member
City of Colma
341 North Delaware Street
San Mateo, CA 94401
joanne.delrosario@colma.ca.gov

Council Member Silva
Council Member
City of Colma
341 North Delaware Street
San Mateo, CA 94401
joseph.silva@colma.ca.gov

Vice Mayor Fiscaro
Vice Mayor
City of Colma
341 North Delaware Street
San Mateo, CA 94401
helen.fiscaro@colma.ca.gov

Council Member Christensen
Council Member
City of Daly City
341 North Delaware Street
San Mateo, CA 94401
judith94014@gmail.com

Jeff Maltbie
City Manager
City of San Carlos
341 North Delaware Street
San Mateo, CA 94401
jmaltbie@cityofsancarlos.org

Council Member Grocott
Council Member
City of San Carlos
341 North Delaware Street
San Mateo, CA 94401
mgrocott@cityofsancarlos.org

Nicole Sandkulla
Senior Water Resources Planning Manager
Bay Area Water Supply and Conservation
Agency
341 North Delaware Street
San Mateo, CA 94401
nsandkulla@bawsca.org
Council Member Gonzalez
Council Member
City of Colma
341 North Delaware Street
San Mateo, CA 94401
raquel.gonzalez@colma.ca.gov

Mayor Colvin
Mayor
City of Colma
341 North Delaware Street
San Mateo, CA 94401
diana.colvin@colma.ca.gov

Council Member Buenaventura
Council Member
City of Daly City
341 North Delaware Street
San Mateo, CA 94401
raybesq@gmail.com

Vice Mayor Canepa
Vice Mayor
City of Daly City
341 North Delaware Street
San Mateo, CA 94401
david@davidcanepa.com

Council Member Collins
Council Member
City of San Carlos
341 North Delaware Street
San Mateo, CA 94401
rcollins@cityofsancarlos.org

Council Member Olbert
Council Member
City of San Carlos
341 North Delaware Street
San Mateo, CA 94401
molbert@cityofsancarlos.org

Mayor Goethals
Mayor
City of San Carlos
341 North Delaware Street
San Mateo, CA 94401
jgoethals@cityofsanmateo.org

Vice Mayor Grassilli
Vice Mayor
City of San Carlos
341 North Delaware Street
San Mateo, CA 94401
bgrassilli@cityofsancarlos.org

Lisa Grote
Community Development Director
City of San Mateo
341 North Delaware Street
San Mateo, CA 94401
lgrote@cityofsanmateo.org

Council Member Freschet
Council Member
City of San Mateo
341 North Delaware Street
San Mateo, CA 94401
mfreschet@cityofsanmateo.org

Council Member Papan
Council Member
City of San Mateo
341 North Delaware Street
San Mateo, CA 94401
dpapan@cityofsanmateo.org

Mike Futrell
City Manager
City of South San Francisco
341 North Delaware Street
San Mateo, CA 94401
mike.futrell@ssf.net

Council Member Normandy
Council Member
City of South San Francisco
341 North Delaware Street
San Mateo, CA 94401
liza.normandy@ssf.net

Mayor Johnson
Mayor
City of San Carlos
341 North Delaware Street
San Mateo, CA 94401
cjohnson@cityofsancarlos.org

Larry Patterson
City Manager
City of San Mateo
330 West 20th Avenue
San Mateo, CA 94403
lpatterson@cityofsanmateo.org

Council Member Bonilla
Council Member
City of San Mateo
341 North Delaware Street
San Mateo, CA 94401
rbonilla@cityofsanmateo.org

Council Member Garbarino
Council Member
City of San Mateo
341 North Delaware Street
San Mateo, CA 94401
rich.garbarino@ssf.net

Deputy Mayor Lim
Deputy Mayor
City of San Mateo
341 North Delaware Street
San Mateo, CA 94401
dlim@cityofsanmateo.org

Council Member Matsumoto
Council Member
City of South San Francisco
341 North Delaware Street
San Mateo, CA 94401
matsumoto@ssf.net

Mayor Addiego
Mayor
City of South San Francisco
341 North Delaware Street
San Mateo, CA 94401
mark.addiego@ssf.net

Vice Mayor Gupta
Vice Mayor
City of South San Francisco
341 North Delaware Street
San Mateo, CA 94401
pradeep.gupta@ssf.net

Greg Bartow
Integrated Water Resources Manager
San Francisco Public Utilities Commission
341 North Delaware Street
San Mateo, CA 94401
gbartow@sflower.org

Paula Kehoe
Water Resources Manager
San Francisco Public Utilities Commission -
Planning Bureau
341 North Delaware Street
San Mateo, CA 94401
pkehoe@sflower.org

John Maltbie
County Manager's Office
San Mateo County
341 North Delaware Street
San Mateo, CA 94401
jmaltbie@smcgov.org

Supervisor Groom
Supervisor
San Mateo County
341 North Delaware Street
San Mateo, CA 94401
cgroom@smcgov.org

Supervisor Tissier
Supervisor
San Mateo County
341 North Delaware Street
San Mateo, CA 94401
atissier@smcgov.org

Brad Donohue
Public Works Director
Town of Colma
341 North Delaware Street
San Mateo, CA 94401
brad.donohue@colma.ca.gov

Patrick Sweetland
Director
Daly City Department of Water and Wastewater
Resources
341 North Delaware Street
San Mateo, CA 94401
psweetland@dalycity.org

Paula Kehoe
Water Resources Manager
San Francisco Public Utilities Commission -
Planning Bureau
341 North Delaware Street
San Mateo, CA 94401
pkehoe@sflower.org

John Maltbie
County Manager's Office
San Mateo County
341 North Delaware Street
San Mateo, CA 94401
jmaltbie@smcgov.org

John Maltbie
County Manager's Office
San Mateo County
341 North Delaware Street
San Mateo, CA 94401
jmaltbie@smcgov.org

Supervisor Pine
Supervisor
San Mateo County
341 North Delaware Street
San Mateo, CA 94401
dpine@smcgov.org

Carol Steinfeld
Sierra Club Loma Prieta Chapter Water
Committee
341 North Delaware Street
San Mateo, CA 94401
carol@carol-steinfeld.com

Peter Drekmeier
Bay Area Program Director
Tuolumne River Trust
341 North Delaware Street
San Mateo, CA 94401
Peter@Tuolumne.org

Appendix C: Correspondences

- Growth Projection Letter to Cities and Counties

Blanusa, Danilo

From: Blanusa, Danilo
Sent: Wednesday, August 19, 2015 2:56 PM
To: 'Jeff Maltbie (jmaltbie@cityofsancarlos.org)'
Cc: Salzano, Tom; Bolzowski, Michael R.; Keck, Jonathan; Carrasco, Anthony; Utz, Michael
Subject: Cal Water Urban Water Management Plan (UWMP) growth forecast for your review - Mid-Peninsula District (SC)
Attachments: Letter to City Planning Officials - Attachmet - SC.pdf

Tracking:	Recipient	Delivery
	'Jeff Maltbie (jmaltbie@cityofsancarlos.org)'	
	Salzano, Tom	Delivered: 8/19/2015 2:56 PM
	Bolzowski, Michael R.	Delivered: 8/19/2015 2:56 PM
	Keck, Jonathan	Delivered: 8/19/2015 2:56 PM
	Carrasco, Anthony	Delivered: 8/19/2015 2:56 PM
	Utz, Michael	Delivered: 8/19/2015 2:56 PM

Dear Mr. Maltbie,

Pursuant to California Water Code, Division 6, Part 2.6, Sections 10610 through 10656, California Water Service is in the process of preparing the required 2015 update of our Urban Water Management Plans. These plans are required to be updated every five (5) years for each of our services areas (Districts). As you know our Mid-Peninsula District provides water service to the City of San Carlos.

The purpose of this communication is to solicit your assistance in reviewing and advising us with respect to one of the key elements of the plan, which is the development of a growth forecast for our district. This growth forecast is conducted based on growth in each customer service classification applicable to a particular district, which typically include:

- Single family residential
- Multi-family residential
- Commercial
- Industrial
- Government (City or County parks, median strips, landscaping and schools)
- Dedicated Irrigation (rare)
- Other (temporary construction meters)

The forecasted growth rates are combined with a demand per service factor applicable to each customer class to determine the future water demands for the district. These growth factors are adjustable and we want to review them with you so that we are consistent with anticipated growth that your planning efforts forecast. If adjustments are necessary we can do them now and avoid conflicts and confusion later in this process.

Some specific information regarding our approach to forecasting customer service growth is detailed as follows:

- **Residential** – Typically two residential customer service categories represent the vast majority of the service counts as well as subsequent water sales or demand in our districts. Cal Water considers both single family and multi-family residential services independently as individual classes, but combines them together in order to assess population growth and housing unit growth. While we use historical trends in the establishment for the growth rates for these two customer classes, we also analyze census data for population and housing factors and compare our forecast results for these two parameters with

available data from City General Plans, as well as County Economic Forecast data and Regional government association forecasts as a reality or appropriateness check of our results.

- **Commercial & Industrial** – Historical trend is a key influence in this customer class, however where we have seen negative trends in recent years for these categories due to the economic downturn, we typically employ either a zero rate of growth or a small, reasonable positive rate of growth. We have also undertaken during the last ten years some reassessment of customer service classifications that has resulted in reallocation of some customer service accounts between various classes. This reallocation, which included commercial, industrial, multi-family residential and in some cases government services, has made the analysis of growth a bit more difficult.
- **Government** – Growth trends are generally parallel to that of the residential sector, so we verify that our rate of grow is not dramatically out-of-sequence with the overall community.
- **Other** – The use of temporary-assigned construction meters varies considerably from year to year, and can represent considerable water demand. In this case, we select a growth rate that is stable, yet reflects the overall growth of the community.

We have included with this communication a set of tables and graphs (see attachment) that illustrate the parameters that influence the growth forecast as currently set up for this district. These include:

- A. The historical and projected service data in both graph and table form
- B. The 2000 and 2010 Census data for the districts service area
- C. Housing projection chart comparing Cal Water’s forecast (always in red) with those from other organizations
- D. Population projection chart comparing Cal Water’s forecast (always in red) with those from other organizations
- E. Table of population and housing values along with multi-family residential unit density and persons per housing unit density that are employed in this forecast effort.

Please note that the 2015 data, which we need to include in our finished forecast, is not yet final, and some minor fluctuation of these values is possible.

Please examine these documents to determine if you concur with our forecasted housing and population numbers. It would be greatly appreciated if you could, by **September 11, 2015**, provide us with an indication of your support or in the case you do not agree with our forecast a reason why and the appropriate rate or growth pattern that we should employ. **If I do not hear back from you by the end of business (EOB) on the above date I will assume that you concur with our forecast.**

If you need a more detailed explanation of these numbers or want to review them with us please feel free to contact me at (408) 367-8340 or by email at tsalzano@calwater.com.

Thank you for your assistance in this effort.

Respectfully,

Thomas A. Salzano

Thomas A. Salzano
Water Resource Planning Supervisor

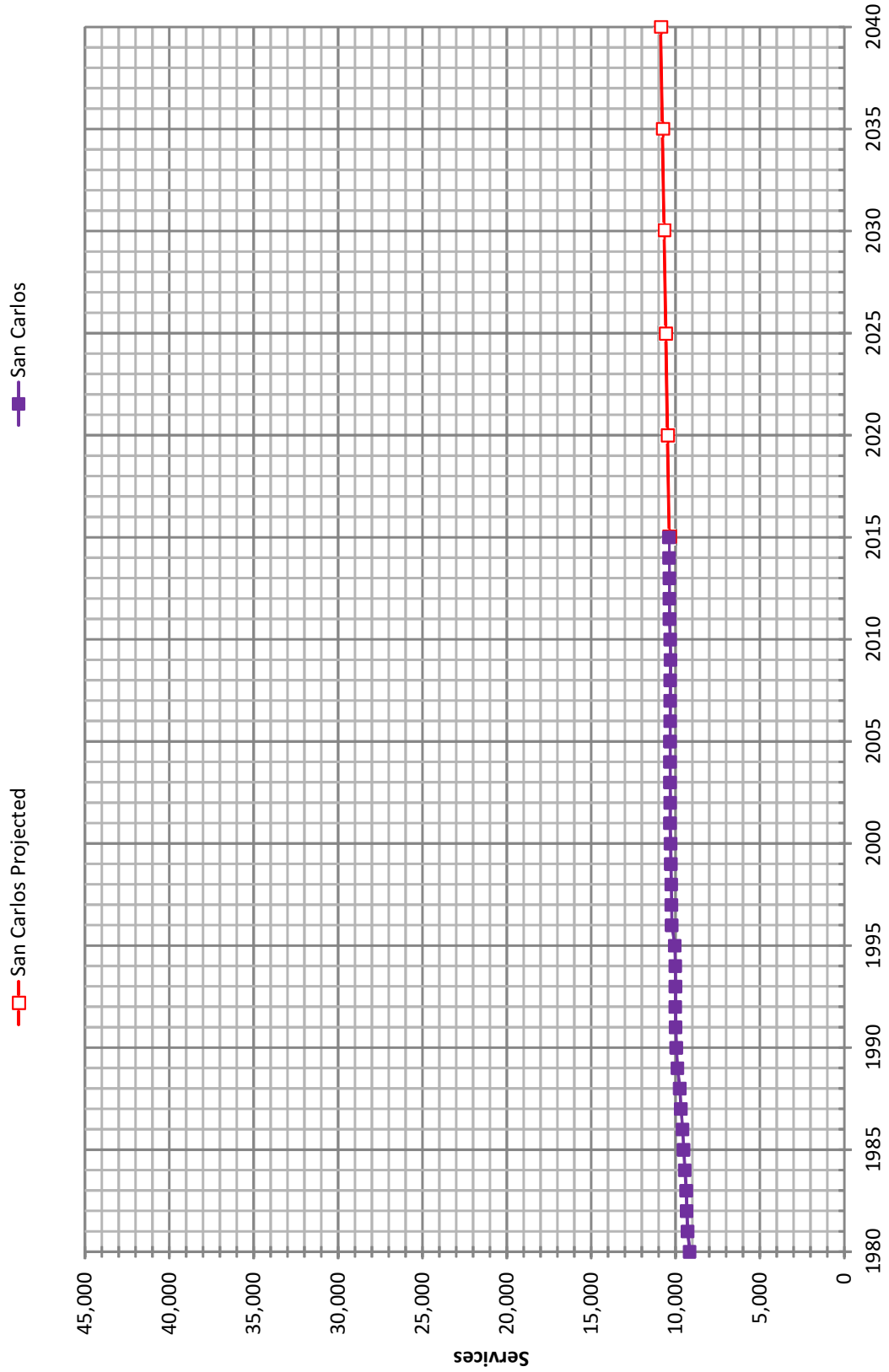
Danilo Blanusa, P.E.
Senior Engineer
CALIFORNIA WATER SERVICE

408-367-8387



Quality. Service. Value.
calwater.com

Historical & Projected Services



California Water Service Company - Mid-Peninsula District (San Carlos)

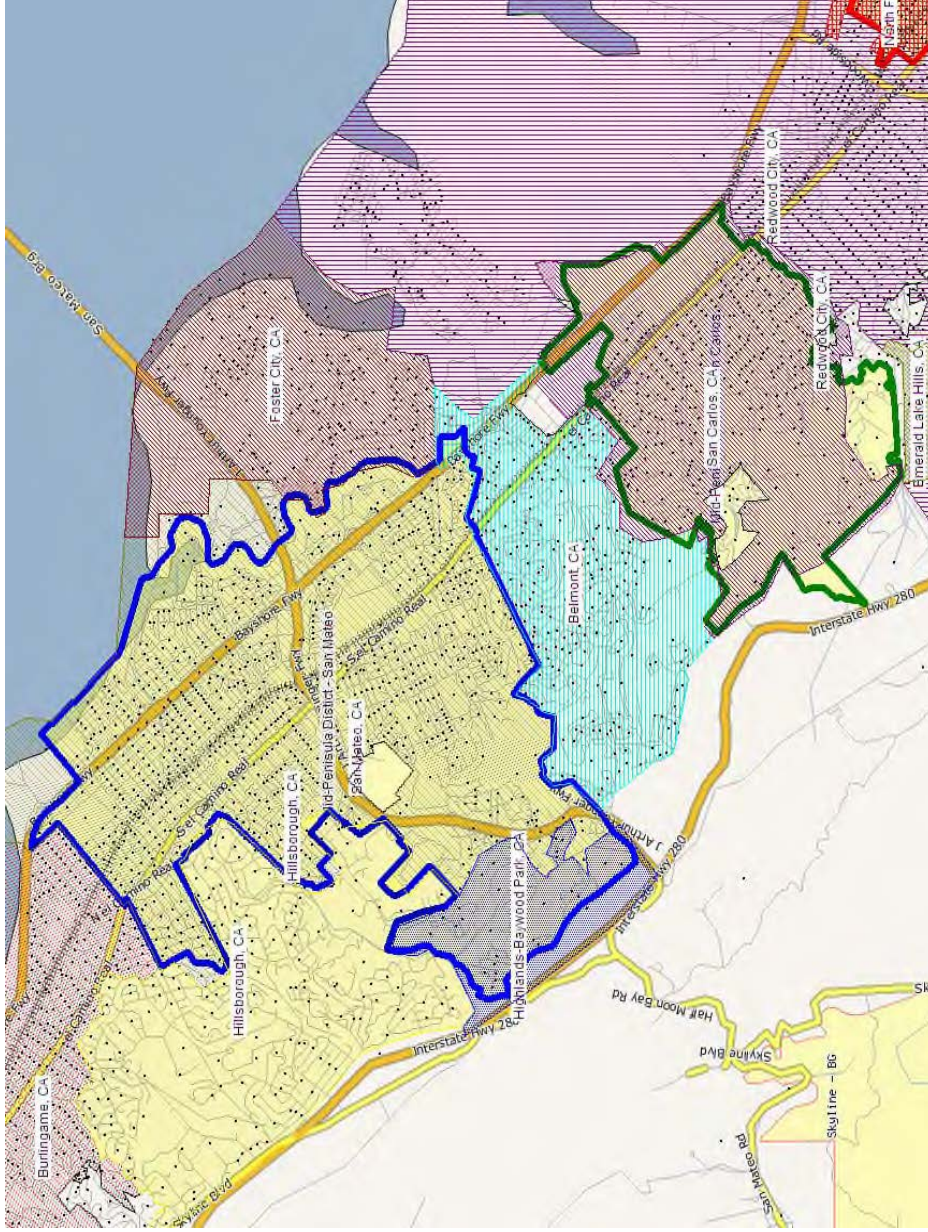
Water Supply and Demand Analysis and Projections

Actual & Projected Annual Average Services

Customer Category	Selected Trend	Growth Rate	Actual Services					Projected Services						
			2000	2005	2010	Base Year 2015	2015	2020	2025	2030	2035	2040		
SFR	SFR_E 20 Yr. Avg.	0.17%	9,082	9,112	9,081	9,136	9,136	9,212	9,289	9,366	9,444	9,523		
MFR	MFR_B 5 Yr. Avg.	1.57%	104	105	118	131	131	142	153	166	179	193		
COM	COM_D 15 Yr. Avg.	0.17%	939	947	957	963	963	972	980	989	998	1,006		
IND	IND_A Zero Growth Rate	0.00%	90	87	84	84	84	84	84	84	84	84		
GOV	GOV_E 20 Yr. Avg.	0.78%	60	57	67	66	66	69	71	74	77	80		
OTH	OTH_A Zero Growth Rate	0.00%	10	7	4	0	0	0	0	0	0	0		
TOTAL	Average growth rate 2014-2040	0.19%	10,285	10,317	10,311	10,381	10,381	10,479	10,578	10,679	10,782	10,887		

Notes:

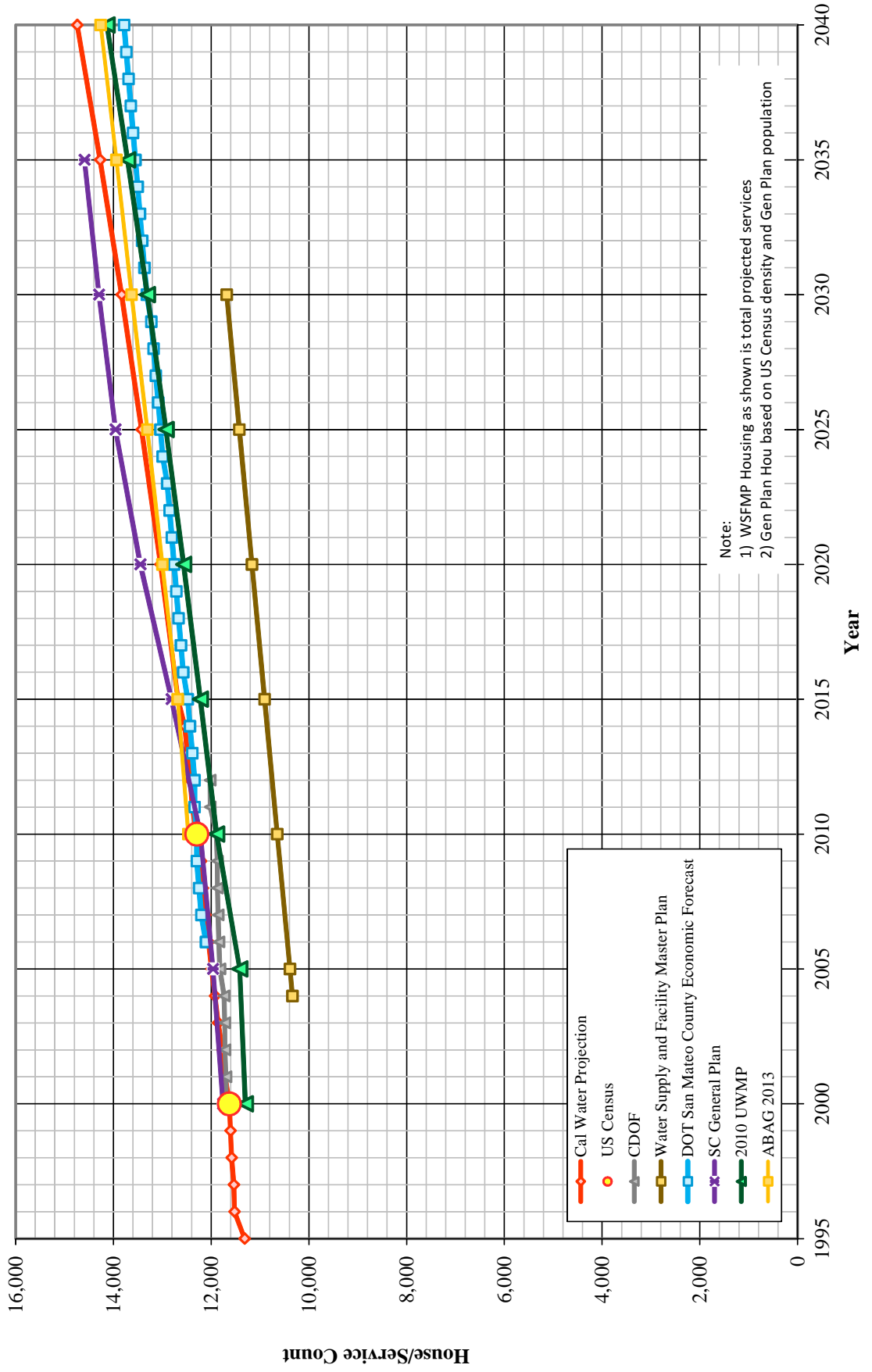
California Water Service Company - Mid-Peninsula District (Combined) Water Supply and Demand Analysis and Projections



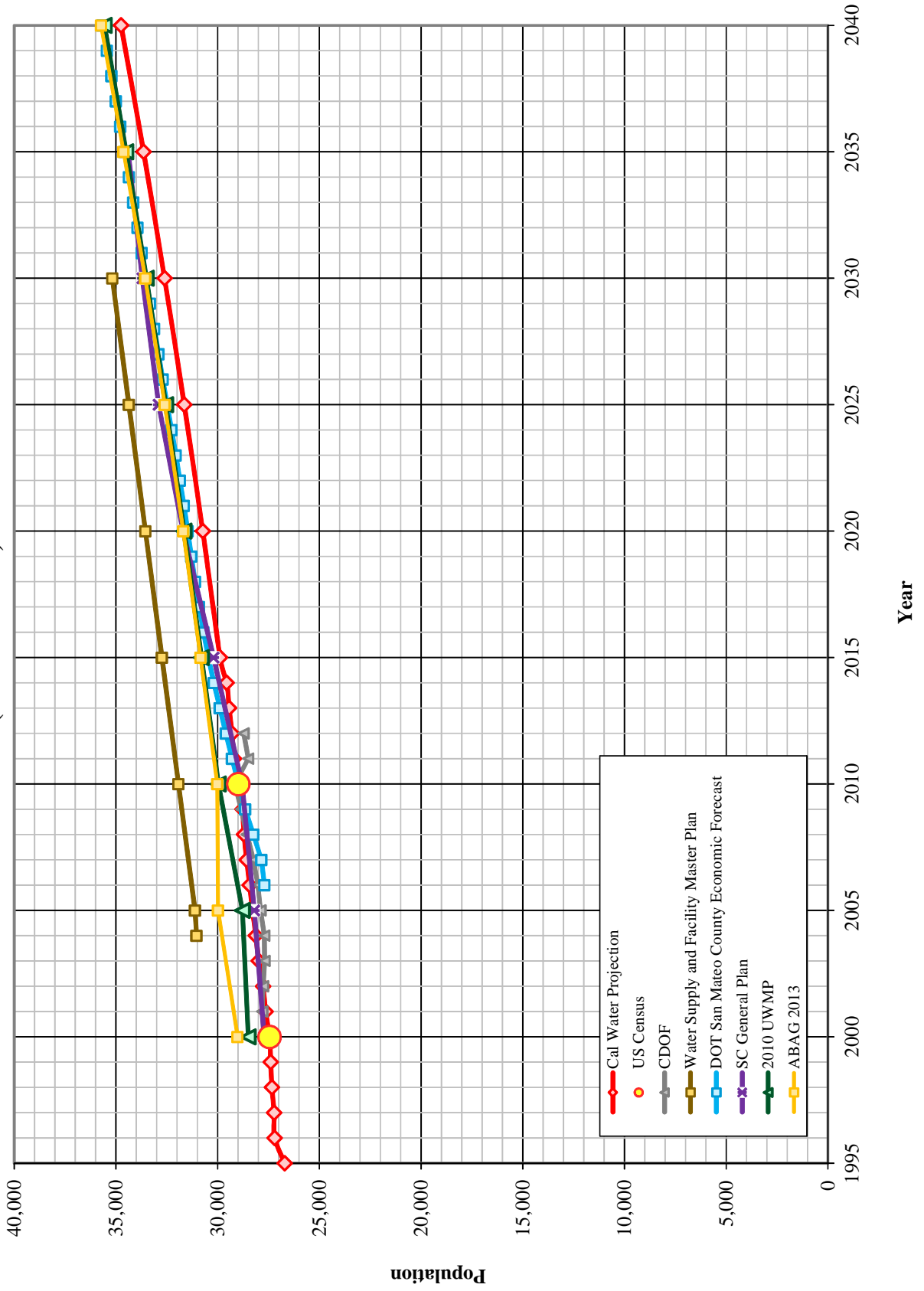
System	US Census 2000 Summary			US Census 2010 Summary			2000-2010 Change		
	Census Blocks	Housing Units (HU)	Density	Census Blocks	Housing Units (HU)	Density	Population Change	Percentage HU Change	Density Change
San Mateo	825	37,837	2.46	883	39,749	2.46	5.0%	5.1%	0.0%
San Carlos	305	11,629	2.36	333	12,293	2.36	5.6%	5.7%	-0.1%
	1,130	49,466	2.44	1,216	52,042	2.44	5.2%	5.2%	-0.1%

MARPLOT disclaimer: The population and housing number given above are only rough estimates. They are based on the US Census Blocks. Although Census Blocks are polygons, MARPLOT uses the centroid, or center point, rather than the entire polygon. If a Census Block centroid is within any of the MARPLOT selected objects, the population and housing numbers for that block are tallied, even if only part of the block is within the selected object. It is possible for a block not be counted if its centroid is not within selected objects, even though part of the block is within the selected objects.

Housing Projections (San Carlos)



Population Projections (San Carlos)



California Water Service Company - Mid-Peninsula District (San Carlos) Water Supply and Demand Analysis and Projections Population Estimate

Year	US Census		Persons per Housing Unit	Single Family Residential		Multi Family Residential			Flat Rate Residential Services (DU)
	Population	Housing Units		Residential Services (DU)	Services	Residential Units (DU)	Unit Density		
2000	27,445	11,629	2.360	9,082	104	2,547	24.5	0	
2010	28,976	12,293	2.357	9,081	118	3,212	27.1	0	
	5.6%	5.7%	-0.1%	0.0%	13.9%	26.1%	10.8%	0.0%	

Year	Single Family Residential Services (DU)	Multi Family Residential			Flat Rate Residential Services (DU)	Residential Dwelling Units	Persons per Housing Unit	Estimated District Population
		Services	Residential Units (DU)	Unit Density				
1995	8,839	101	2,477	24.5	11,317	2.360	26,708	
1996	9,025	102	2,498	24.5	11,522	2.360	27,194	
1997	9,037	102	2,500	24.5	11,536	2.360	27,226	
1998	9,055	103	2,526	24.5	11,581	2.360	27,332	
1999	9,072	104	2,534	24.5	11,606	2.360	27,391	
2000	9,082	104	2,547	24.5	11,629	2.360	27,445	
2001	9,101	105	2,613	24.8	11,715	2.360	27,643	
2002	9,089	105	2,680	25.5	11,769	2.359	27,769	
2003	9,112	104	2,746	26.3	11,859	2.359	27,976	
2004	9,109	105	2,813	26.8	11,922	2.359	28,123	
2005	9,112	105	2,879	27.4	11,992	2.359	28,284	
2006	9,109	104	2,946	28.3	12,055	2.358	28,430	
2007	9,106	104	3,012	29.1	12,119	2.358	28,575	
2008	9,095	111	3,079	27.8	12,174	2.358	28,702	
2009	9,063	117	3,145	26.8	12,208	2.357	28,780	
2010	9,081	118	3,212	27.1	12,293	2.357	28,976	
2011	9,110	121	3,278	27.0	12,388	2.357	29,200	
2012	9,120	123	3,309	27.0	12,429	2.357	29,297	
2013	9,126	125	3,361	27.0	12,487	2.357	29,434	
2014	9,137	126	3,401	27.0	12,538	2.357	29,554	
2015	9,136	131	3,540	27.0	12,676	2.357	29,879	
2020	9,212	142	3,826	27.0	13,038	2.357	30,732	
2025	9,289	153	4,135	27.0	13,423	2.357	31,640	
2030	9,366	166	4,468	27.0	13,835	2.357	32,610	
2035	9,444	179	4,829	27.0	14,273	2.357	33,644	
2040	9,523	193	5,219	27.0	14,742	2.357	34,748	
ACTUAL								
PROJECTED								
^								
ACTUAL								
PROJECTED								
^								
ACTUAL								
PROJECTED								
^								

Blanusa, Danilo

From: Blanusa, Danilo
Sent: Wednesday, August 19, 2015 3:01 PM
To: 'Lisa Grote (lgrote@cityofsanmateo.org)'
Cc: Salzano, Tom; Bolzowski, Michael R.; Keck, Jonathan; Carrasco, Anthony; Utz, Michael
Subject: Cal Water Urban Water Management Plan (UWMP) growth forecast for your review - Mid-Peninsula District (SM)
Attachments: Letter to City Planning Officials - Attachmet - SM.pdf

Tracking:	Recipient	Delivery
	'Lisa Grote (lgrote@cityofsanmateo.org)'	
	Salzano, Tom	Delivered: 8/19/2015 3:01 PM
	Bolzowski, Michael R.	Delivered: 8/19/2015 3:01 PM
	Keck, Jonathan	Delivered: 8/19/2015 3:01 PM
	Carrasco, Anthony	Delivered: 8/19/2015 3:01 PM
	Utz, Michael	Delivered: 8/19/2015 3:01 PM

Dear Ms. Grote,

Pursuant to California Water Code, Division 6, Part 2.6, Sections 10610 through 10656, California Water Service is in the process of preparing the required 2015 update of our Urban Water Management Plans. These plans are required to be updated every five (5) years for each of our services areas (Districts). As you know our Mid-Peninsula District provides water service to the City of San Mateo.

The purpose of this communication is to solicit your assistance in reviewing and advising us with respect to one of the key elements of the plan, which is the development of a growth forecast for our district. This growth forecast is conducted based on growth in each customer service classification applicable to a particular district, which typically include:

- Single family residential
- Multi-family residential
- Commercial
- Industrial
- Government (City or County parks, median strips, landscaping and schools)
- Dedicated Irrigation (rare)
- Other (temporary construction meters)

The forecasted growth rates are combined with a demand per service factor applicable to each customer class to determine the future water demands for the district. These growth factors are adjustable and we want to review them with you so that we are consistent with anticipated growth that your planning efforts forecast. If adjustments are necessary we can do them now and avoid conflicts and confusion later in this process.

Some specific information regarding our approach to forecasting customer service growth is detailed as follows:

- **Residential** – Typically two residential customer service categories represent the vast majority of the service counts as well as subsequent water sales or demand in our districts. Cal Water considers both single family and multi-family residential services independently as individual classes, but combines them together in order to assess population growth and housing unit growth. While we use historical trends in the establishment for the growth rates for these two customer classes, we also analyze census data for population and housing factors and compare our forecast results for these two parameters with

available data from City General Plans, as well as County Economic Forecast data and Regional government association forecasts as a reality or appropriateness check of our results.

- **Commercial & Industrial** – Historical trend is a key influence in this customer class, however where we have seen negative trends in recent years for these categories due to the economic downturn, we typically employ either a zero rate of growth or a small, reasonable positive rate of growth. We have also undertaken during the last ten years some reassessment of customer service classifications that has resulted in reallocation of some customer service accounts between various classes. This reallocation, which included commercial, industrial, multi-family residential and in some cases government services, has made the analysis of growth a bit more difficult.
- **Government** – Growth trends are generally parallel to that of the residential sector, so we verify that our rate of grow is not dramatically out-of-sequence with the overall community.
- **Other** – The use of temporary-assigned construction meters varies considerably from year to year, and can represent considerable water demand. In this case, we select a growth rate that is stable, yet reflects the overall growth of the community.

We have included with this communication a set of tables and graphs (see attachment) that illustrate the parameters that influence the growth forecast as currently set up for this district. These include:

- A. The historical and projected service data in both graph and table form
- B. The 2000 and 2010 Census data for the districts service area
- C. Housing projection chart comparing Cal Water’s forecast (always in red) with those from other organizations
- D. Population projection chart comparing Cal Water’s forecast (always in red) with those from other organizations
- E. Table of population and housing values along with multi-family residential unit density and persons per housing unit density that are employed in this forecast effort.

Please note that the 2015 data, which we need to include in our finished forecast, is not yet final, and some minor fluctuation of these values is possible.

Please examine these documents to determine if you concur with our forecasted housing and population numbers. It would be greatly appreciated if you could, by **September 11, 2015**, provide us with an indication of your support or in the case you do not agree with our forecast a reason why and the appropriate rate or growth pattern that we should employ. **If I do not hear back from you by the end of business (EOB) on the above date I will assume that you concur with our forecast.**

If you need a more detailed explanation of these numbers or want to review them with us please feel free to contact me at (408) 367-8340 or by email at tsalzano@calwater.com.

Thank you for your assistance in this effort.

Respectfully,

Thomas A. Salzano

Thomas A. Salzano
Water Resource Planning Supervisor

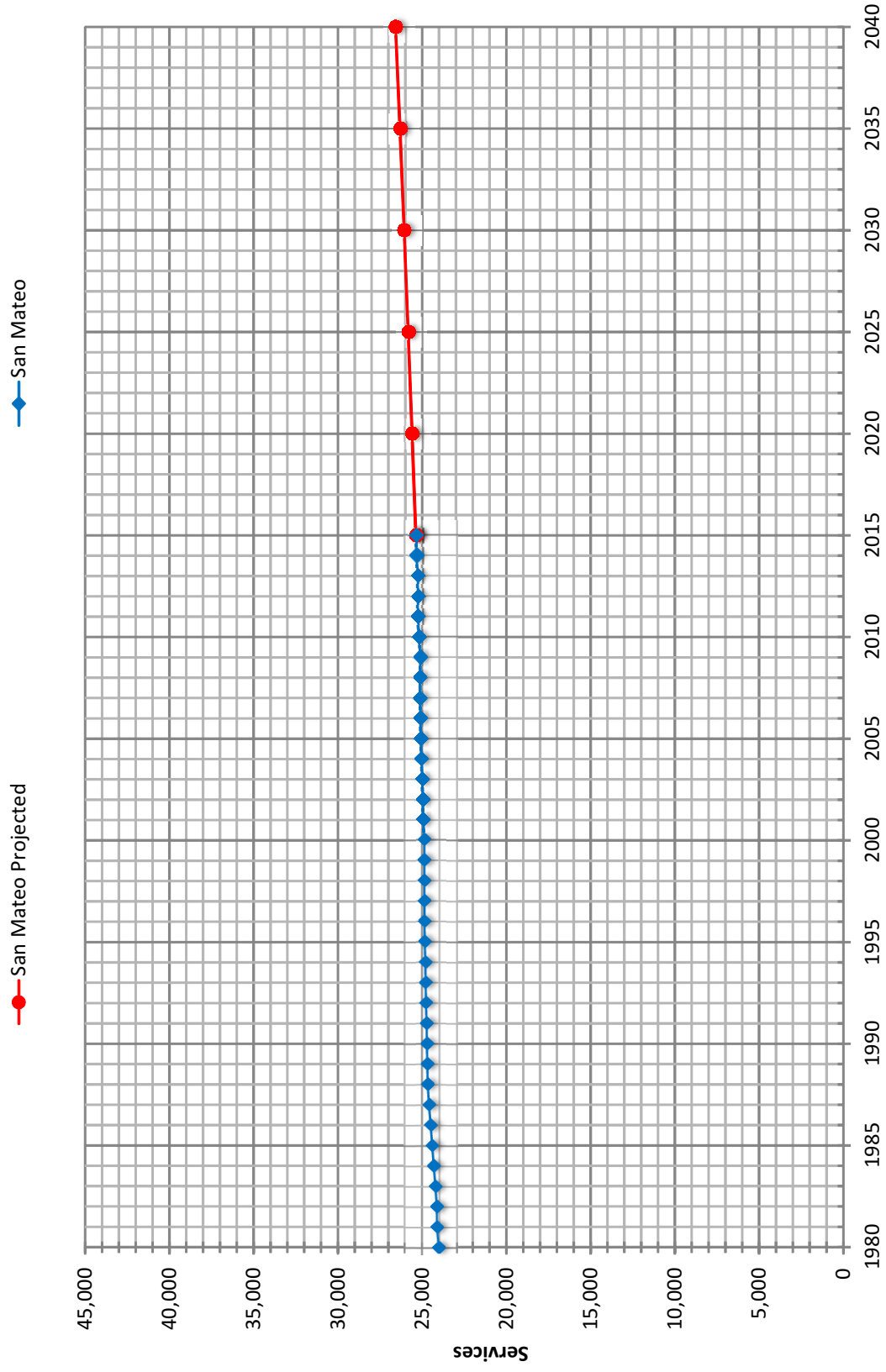
Danilo Blanusa, P.E.
Senior Engineer
CALIFORNIA WATER SERVICE

408-367-8387



Quality. Service. Value.
calwater.com

Historical & Projected Services



California Water Service Company - Mid-Peninsula District (San Mateo)

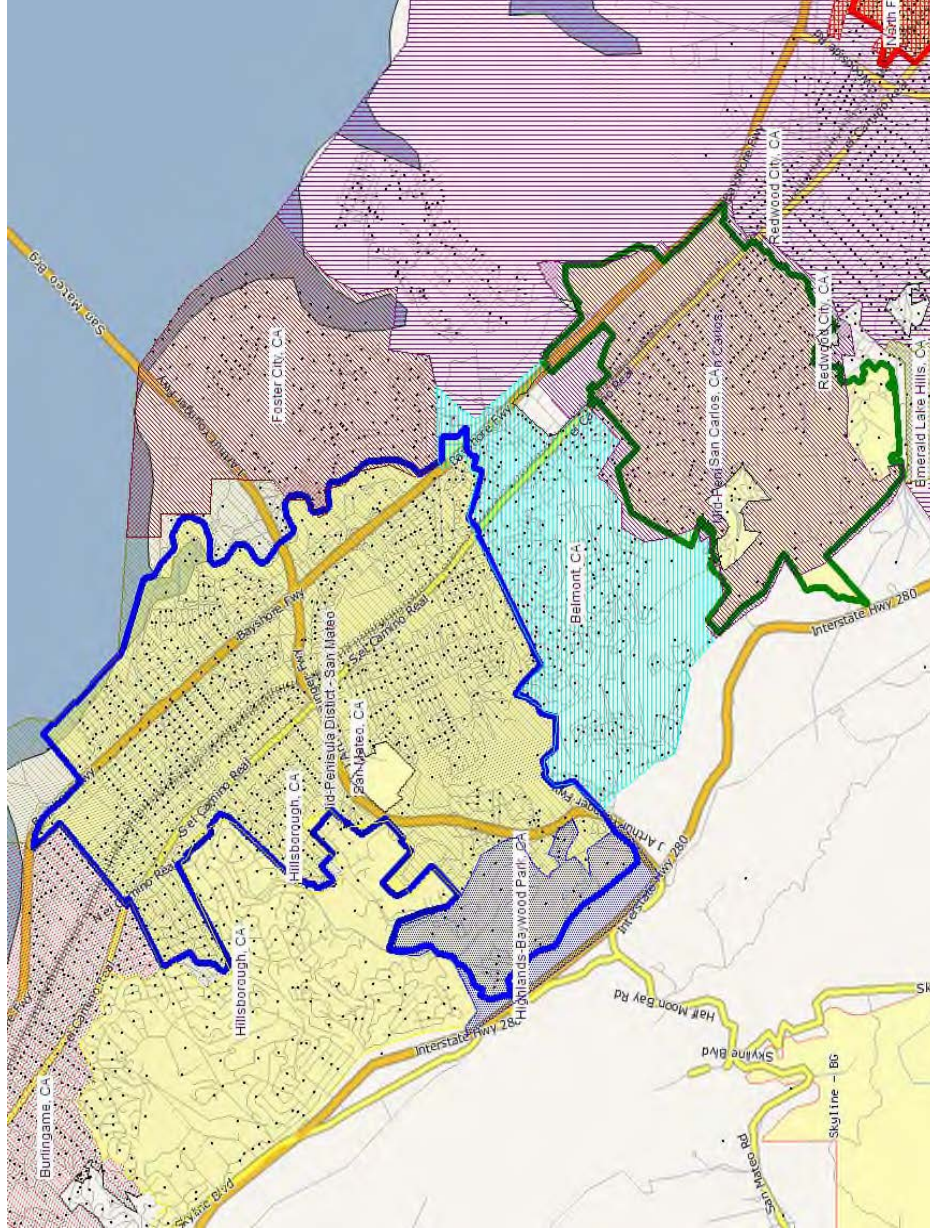
Water Supply and Demand Analysis and Projections

Actual & Projected Annual Average Services

Customer Category	Selected Trend	Growth Rate	Actual Services				Base Year 2015	Projected Services						Total Increase	
			2000	2005	2010	2015		2015	2020	2025	2030	2035	2040		
SFR	SFR_B 5 Yr. Avg.	0.12%	21,781	21,994	21,947	22,083	22,083	22,083	22,218	22,354	22,491	22,628	22,766	2040	683
MFR	MFR_B 5 Yr. Avg.	1.87%	472	474	512	581	581	637	698	766	840	921	921	341	
COM	COM_E 20 Yr. Avg.	0.17%	2,340	2,371	2,425	2,414	2,414	2,434	2,455	2,475	2,496	2,516	2,516	102	
IND	IND_A Zero Growth Rate	0.00%	10	11	9	9	9	9	9	9	9	9	9	0	
GOV	GOV_C 10 Yr. Avg.	1.10%	255	221	266	244	244	258	273	288	304	321	321	77	
OTH	OTH_A Zero Growth Rate	0.00%	9	17	24	42	42	42	42	42	42	42	42	0	
TOTAL	Average growth rate 2014-2040	0.19%	24,867	25,087	25,183	25,373	25,373	25,598	25,831	26,071	26,319	26,577	26,577	1,204	

Notes:

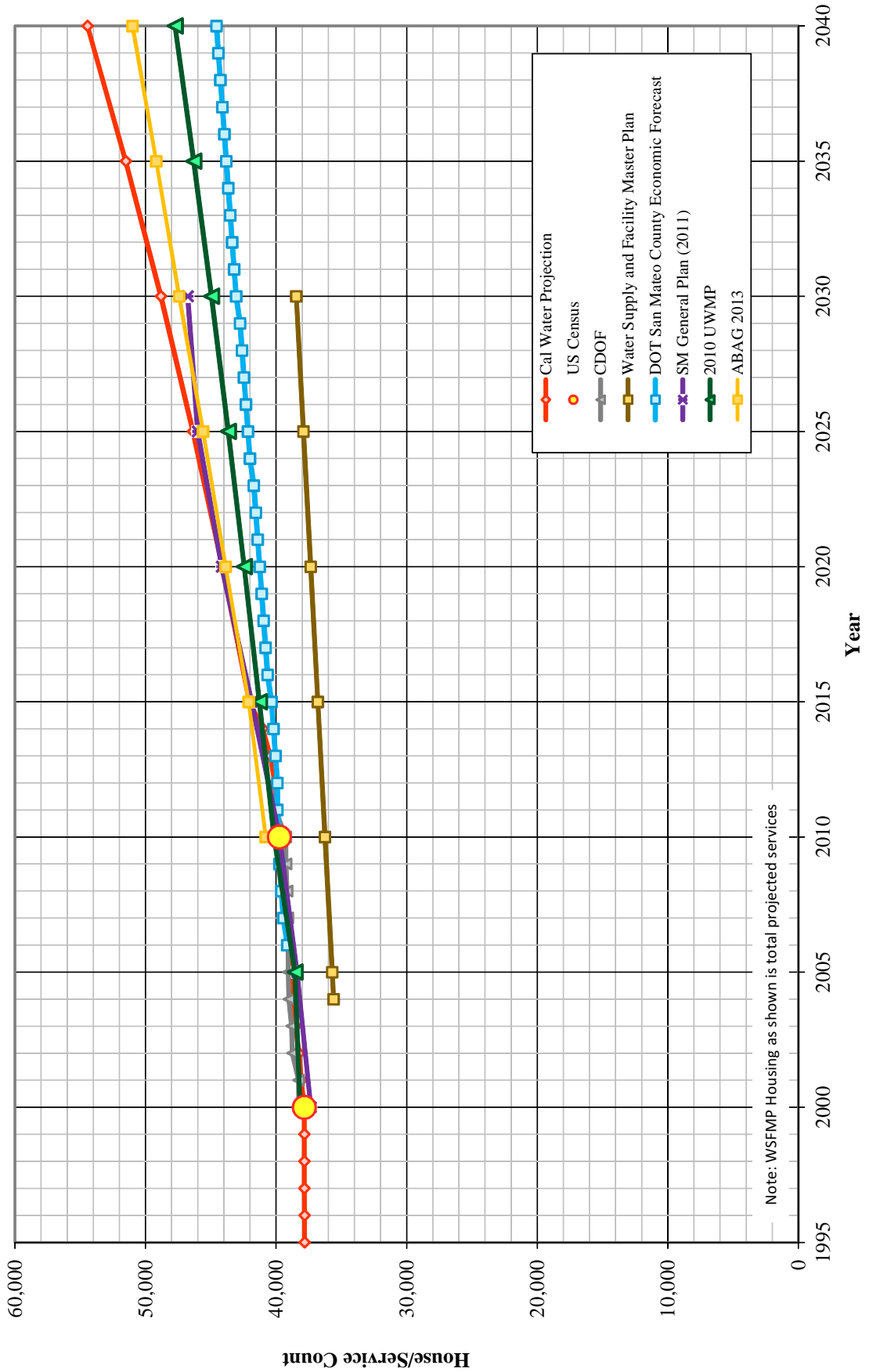
California Water Service Company - Mid-Peninsula District (Combined) Water Supply and Demand Analysis and Projections



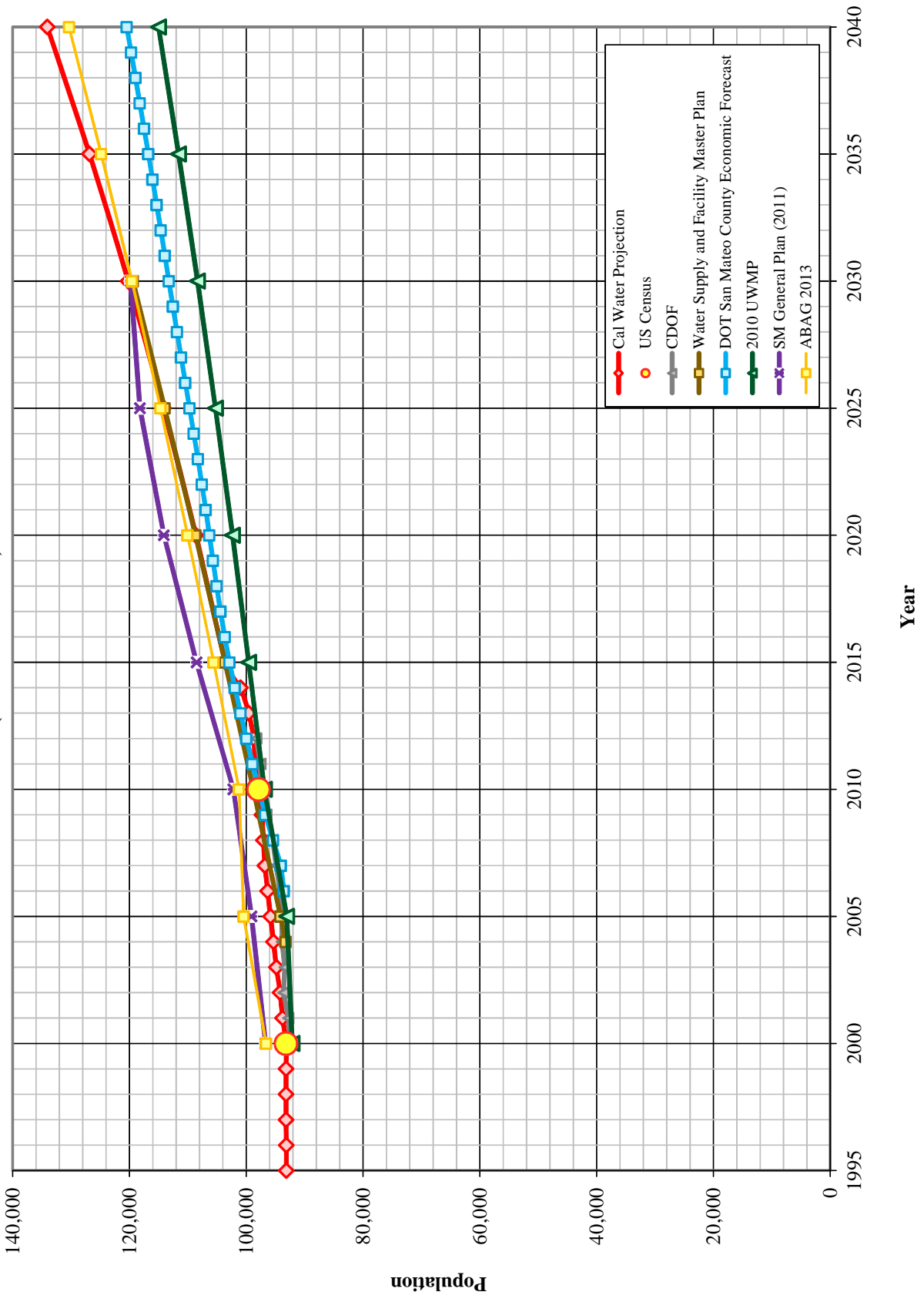
System	US Census 2000 Summary			US Census 2010 Summary			2000-2010 Change			
	Census Blocks	Housing Units (HU)	Density	Census Blocks	Housing Units (HU)	Density	Population Change	Percentage HU Change	Density Change	
San Mateo	825	93,187	37,837	2,46	883	97,874	39,749	2.46	5.1%	0.0%
San Carlos	305	27,445	11,629	2.36	333	28,976	12,293	2.36	5.7%	-0.1%
	1,130	120,632	49,466	2.44	1,216	126,850	52,042	2.44	5.2%	-0.1%

MARPLOT disclaimer: The population and housing number given above are only rough estimates. They are based on the US Census Blocks. Although Census Blocks are polygons, MARPLOT uses the centroid, or center point, rather than the entire polygon. If a Census Block centroid is within any of the MARPLOT selected objects, the population and housing numbers for that block are tallied, even if only part of the block is within the selected object. It is possible for a block not to be counted if its centroid is not within selected objects, even though part of the block is within the selected objects.

Housing Projections (San Mateo)



Population Projections (San Mateo)



California Water Service Company - Mid-Peninsula District (San Mateo)

Water Supply and Demand Analysis and Projections Population Estimate

Year	US Census		Persons per Housing Unit	Single Family Residential		Multi Family Residential		Flat Rate Residential Services (DU)
	Population	Housing Units		Residential Services (DU)	Services	Residential Units (DU)	Unit Density	
2000	93,187	37,837	2.463	21,781	472	16,056	34.0	0
2010	97,874	39,749	2.462	21,947	512	17,802	34.8	0
	5.0%	5.1%	0.0%	0.8%	8.4%	10.9%	2.2%	0.0%

Year	Single Family Residential Services (DU)		Multi Family Residential		Flat Rate Residential Services (DU)	Residential Dwelling Units	Persons per Housing Unit	Estimated District Population
	Residential Services (DU)	Housing Units	Residential Units (DU)	Unit Density				
1995	21,769	472	16,047	34.0	0	37,816	2.463	93,136
1996	21,785	471	16,030	34.0	0	37,816	2.463	93,135
1997	21,781	472	16,056	34.0	0	37,837	2.463	93,187
1998	21,781	472	16,056	34.0	0	37,837	2.463	93,187
1999	21,781	472	16,056	34.0	0	37,837	2.463	93,187
2000	21,781	472	16,056	34.0	0	37,837	2.463	93,187
2001	21,842	478	16,231	34.0	0	38,073	2.463	93,765
2002	21,844	476	16,405	34.5	0	38,249	2.463	94,199
2003	21,931	472	16,580	35.1	0	38,511	2.463	94,840
2004	21,955	474	16,754	35.4	0	38,710	2.463	95,328
2005	21,994	474	16,929	35.7	0	38,923	2.463	95,851
2006	22,018	469	17,104	36.5	0	39,122	2.463	96,338
2007	22,033	467	17,278	37.0	0	39,311	2.462	96,802
2008	21,965	489	17,453	35.7	0	39,418	2.462	97,064
2009	21,892	510	17,627	34.5	0	39,519	2.462	97,311
2010	21,947	512	17,802	34.8	0	39,749	2.462	97,874
2011	22,019	523	17,977	34.4	0	39,995	2.462	98,480
2012	22,025	526	18,075	34.4	0	40,101	2.462	98,740
2013	22,044	535	18,407	34.4	0	40,451	2.462	99,603
2014	22,074	551	18,947	34.4	0	41,020	2.462	101,004
2015	22,083	581	19,962	34.4	0	42,045	2.462	103,527
2020	22,218	637	21,894	34.4	0	44,112	2.462	108,617
2025	22,354	698	24,013	34.4	0	46,367	2.462	114,169
2030	22,491	766	26,337	34.4	0	48,828	2.462	120,229
2035	22,628	840	28,887	34.4	0	51,515	2.462	126,845
2040	22,766	921	31,683	34.4	0	54,449	2.462	134,070

^
|
ACTUAL
PROJECTED
|
V

^
|
ACTUAL
PROJECTED
|
V

Blanusa, Danilo

From: Blanusa, Danilo
Sent: Wednesday, August 19, 2015 3:06 PM
To: 'John Maltbie (jmaltrie@smcgov.org)'
Cc: Salzano, Tom; Bolzowski, Michael R.; Keck, Jonathan; Carrasco, Anthony; Utz, Michael
Subject: Cal Water Urban Water Management Plan (UWMP) growth forecast for your review - Mid-Peninsula District
Attachments: Letter to City Planning Officials - Attachmet - MPS Combined.pdf

Follow Up Flag: Follow up
Flag Status: Flagged

Tracking:	Recipient	Delivery
	'John Maltbie (jmaltrie@smcgov.org)'	
	Salzano, Tom	Delivered: 8/19/2015 3:06 PM
	Bolzowski, Michael R.	Delivered: 8/19/2015 3:06 PM
	Keck, Jonathan	Delivered: 8/19/2015 3:06 PM
	Carrasco, Anthony	Delivered: 8/19/2015 3:06 PM
	Utz, Michael	Delivered: 8/19/2015 3:06 PM

Dear Mr. Maltbie,

Pursuant to California Water Code, Division 6, Part 2.6, Sections 10610 through 10656, California Water Service is in the process of preparing the required 2015 update of our Urban Water Management Plans. These plans are required to be updated every five (5) years for each of our services areas (Districts). As you know our Mid-Peninsula District provides water service to the County of San Mateo.

The purpose of this communication is to solicit your assistance in reviewing and advising us with respect to one of the key elements of the plan, which is the development of a growth forecast for our district. This growth forecast is conducted based on growth in each customer service classification applicable to a particular district, which typically include:

- Single family residential
- Multi-family residential
- Commercial
- Industrial
- Government (City or County parks, median strips, landscaping and schools)
- Dedicated Irrigation (rare)
- Other (temporary construction meters)

The forecasted growth rates are combined with a demand per service factor applicable to each customer class to determine the future water demands for the district. These growth factors are adjustable and we want to review them with you so that we are consistent with anticipated growth that your planning efforts forecast. If adjustments are necessary we can do them now and avoid conflicts and confusion later in this process.

Some specific information regarding our approach to forecasting customer service growth is detailed as follows:

- **Residential** – Typically two residential customer service categories represent the vast majority of the service counts as well as subsequent water sales or demand in our districts. Cal Water considers both single family and multi-family residential services independently as individual classes, but combines them together in order to assess population growth and housing unit growth. While we use historical trends in the establishment for the growth rates for these two customer classes, we also analyze census

data for population and housing factors and compare our forecast results for these two parameters with available data from City General Plans, as well as County Economic Forecast data and Regional government association forecasts as a reality or appropriateness check of our results.

- **Commercial & Industrial** – Historical trend is a key influence in this customer class, however where we have seen negative trends in recent years for these categories due to the economic downturn, we typically employ either a zero rate of growth or a small, reasonable positive rate of growth. We have also undertaken during the last ten years some reassessment of customer service classifications that has resulted in reallocation of some customer service accounts between various classes. This reallocation, which included commercial, industrial, multi-family residential and in some cases government services, has made the analysis of growth a bit more difficult.
- **Government** – Growth trends are generally parallel to that of the residential sector, so we verify that our rate of grow is not dramatically out-of-sequence with the overall community.
- **Other** – The use of temporary-assigned construction meters varies considerably from year to year, and can represent considerable water demand. In this case, we select a growth rate that is stable, yet reflects the overall growth of the community.

We have included with this communication a set of tables and graphs (see attachment) that illustrate the parameters that influence the growth forecast as currently set up for this district. These include:

- A. The historical and projected service data in both graph and table form
- B. The 2000 and 2010 Census data for the districts service area
- C. Housing projection chart comparing Cal Water’s forecast (always in red) with those from other organizations
- D. Population projection chart comparing Cal Water’s forecast (always in red) with those from other organizations
- E. Table of population and housing values along with multi-family residential unit density and persons per housing unit density that are employed in this forecast effort.

Please note that the 2015 data, which we need to include in our finished forecast, is not yet final, and some minor fluctuation of these values is possible.

Please examine these documents to determine if you concur with our forecasted housing and population numbers. It would be greatly appreciated if you could, by **September 11, 2015**, provide us with an indication of your support or in the case you do not agree with our forecast a reason why and the appropriate rate or growth pattern that we should employ. **If I do not hear back from you by the end of business (EOB) on the above date I will assume that you concur with our forecast.**

If you need a more detailed explanation of these numbers or want to review them with us please feel free to contact me at (408) 367-8340 or by email at tsalzano@calwater.com.

Thank you for your assistance in this effort.

Respectfully,

Thomas A. Salzano

Thomas A. Salzano
Water Resource Planning Supervisor

Danilo Blanusa, P.E.
Senior Engineer

CALIFORNIA WATER SERVICE

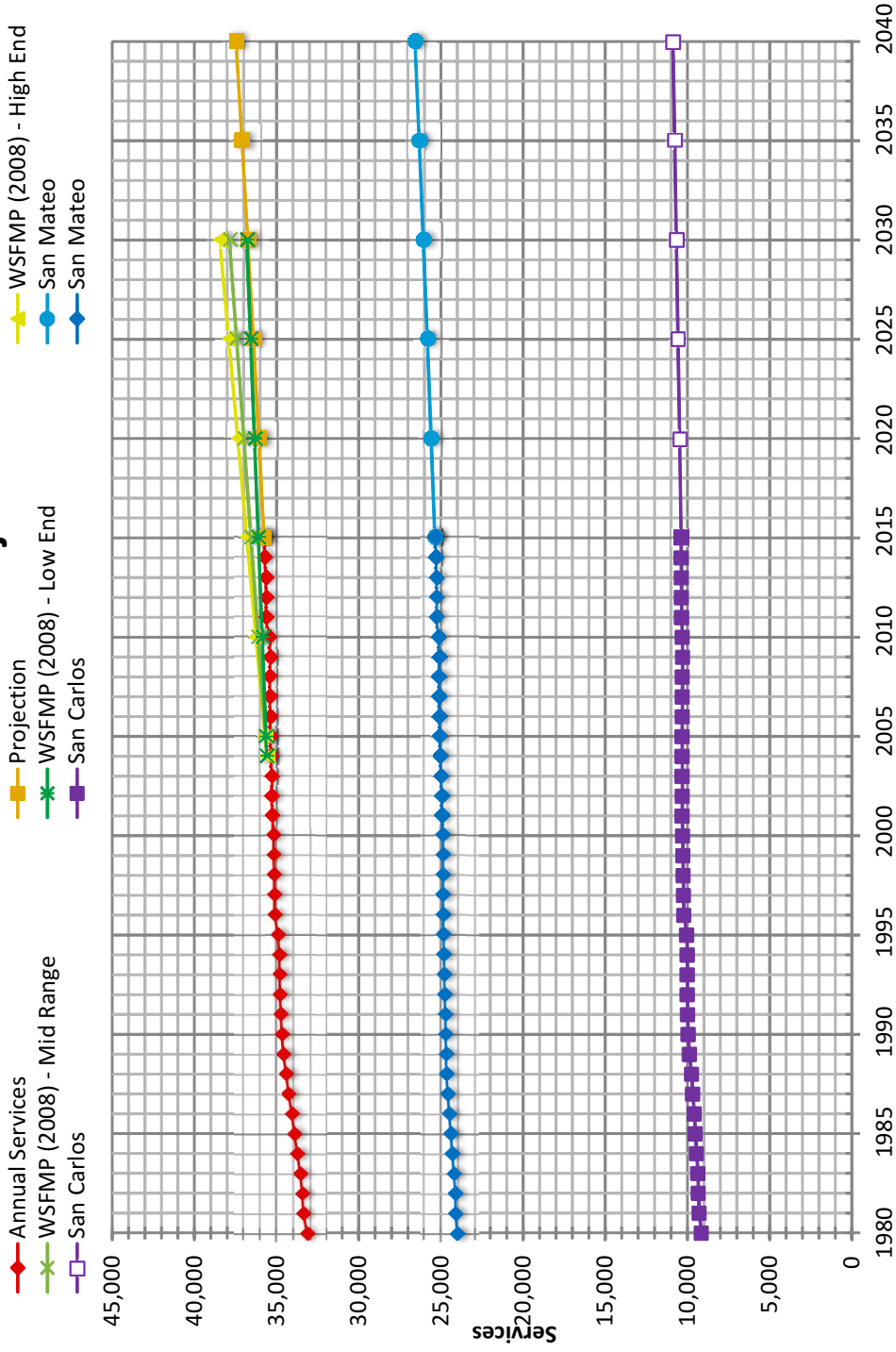
408-367-8387



Quality. Service. Value.

calwater.com

Historical & Projected Services



California Water Service Company - Mid-Peninsula District (Combined)

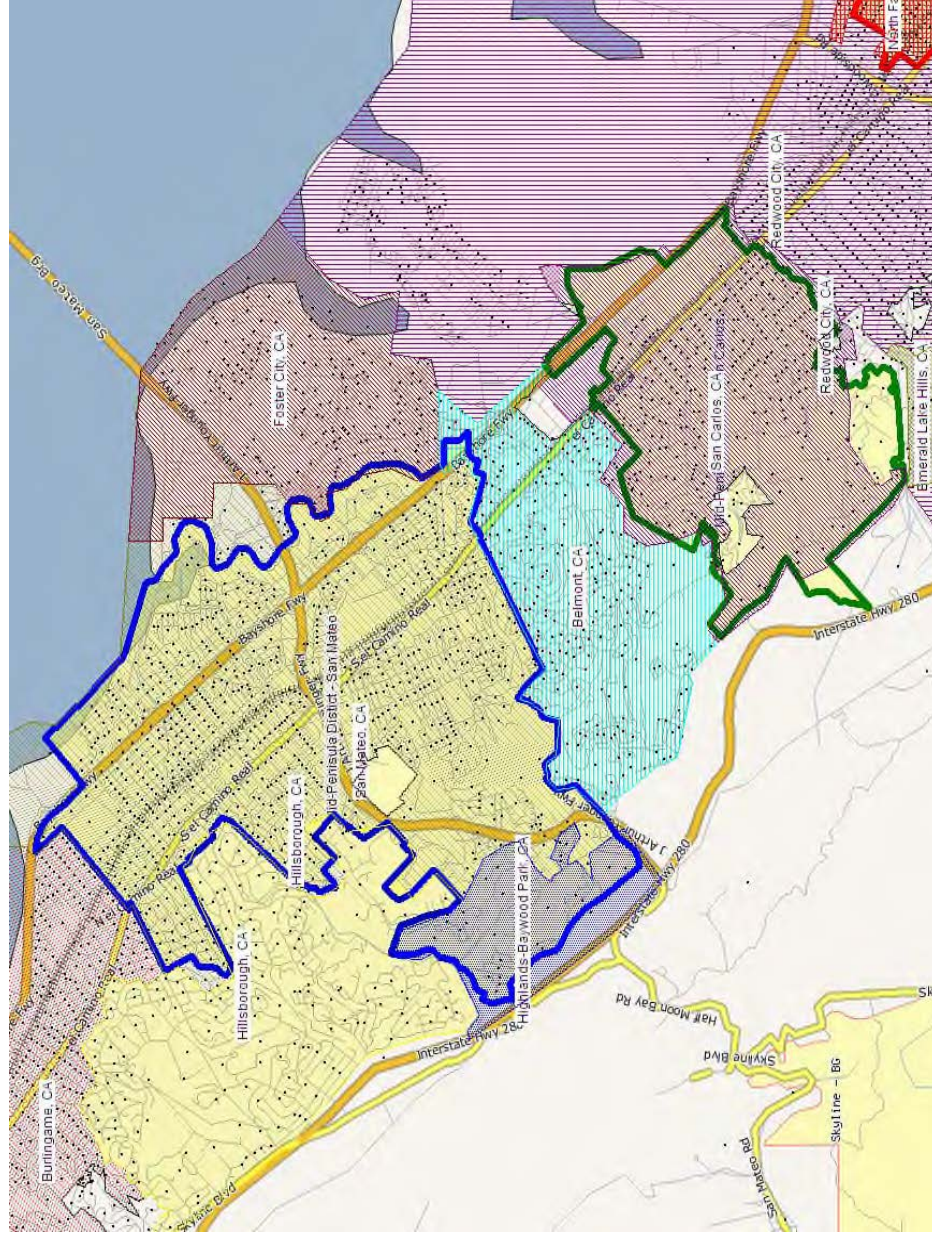
Water Supply and Demand Analysis and Projections

Actual & Projected Annual Average Services

Customer Category	Selected Trend	Average Growth Rate	Actual Services					Base Year	Projected Services						
			2000	2005	2010	2015	2020		2025	2030	2035	2040			
SFR		0.13%	30,863	31,107	31,028	31,219	31,219	31,430	31,643	31,857	32,072	32,289			
MFR		1.81%	576	579	630	712	712	778	852	931	1,019	1,115			
COM		0.17%	3,279	3,318	3,382	3,378	3,378	3,406	3,435	3,464	3,493	3,523			
IND		0.00%	100	98	93	94	94	94	94	94	94	94			
GOV		1.04%	315	278	333	310	310	327	344	362	381	402			
OTH		0.00%	19	24	28	42	42	42	42	42	42	42			
TOTAL	Average growth rate 2014-2040	0.19%	35,152	35,404	35,494	35,754	35,754	36,077	36,409	36,750	37,101	37,464			

Notes:

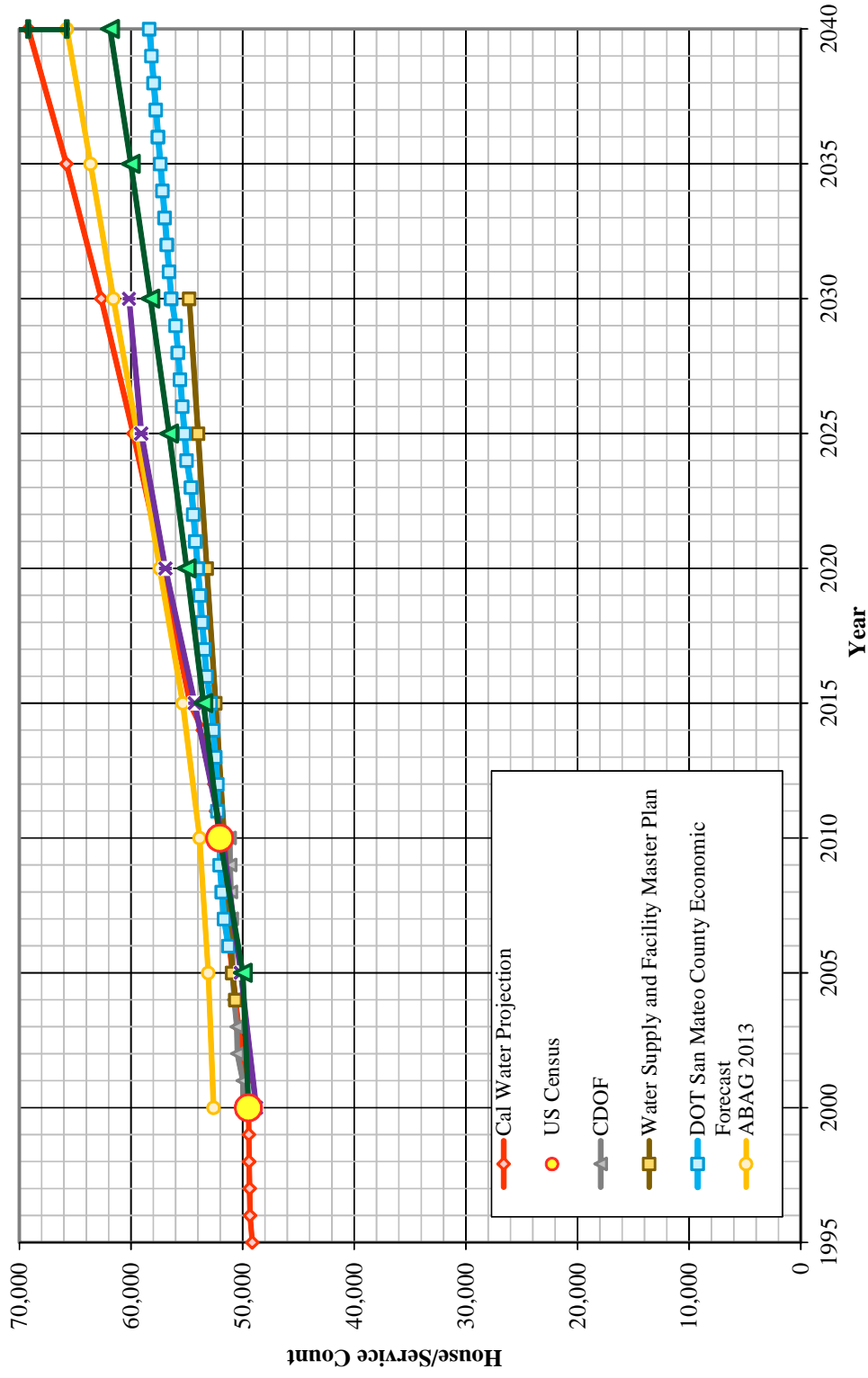
California Water Service Company - Mid-Peninsula District (Combined) Water Supply and Demand Analysis and Projections



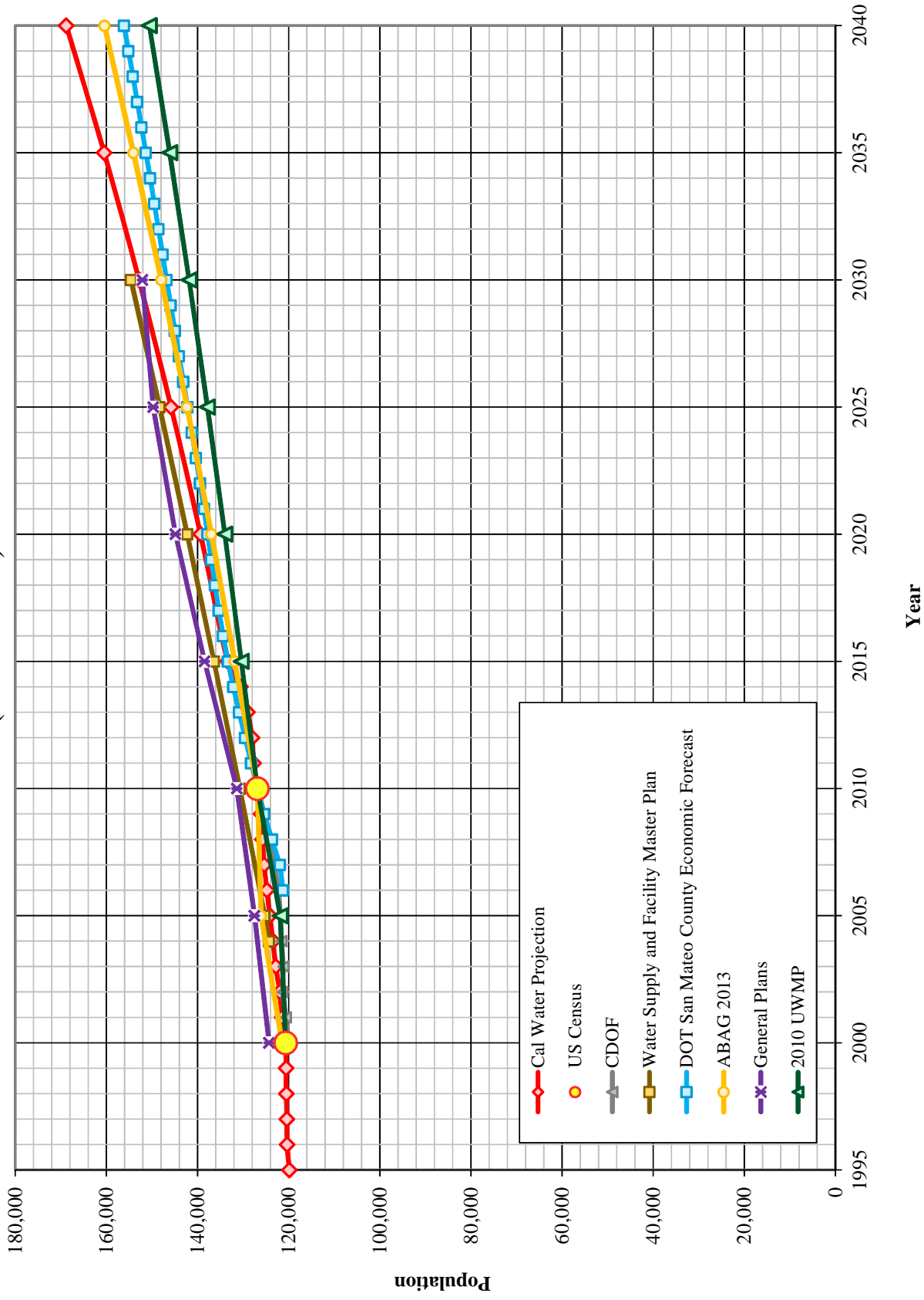
System	US Census 2000 Summary			US Census 2010 Summary			2000-2010 Change		
	Census Blocks	Housing Units (HU)	Density	Census Blocks	Housing Units (HU)	Density	Population Change	Percentage HU Change	Density Change
San Mateo	825	37,837	2.46	883	39,749	2.46	5.0%	5.1%	0.0%
San Carlos	305	11,629	2.36	333	12,293	2.36	5.6%	5.7%	-0.1%
	1,130	49,466	2.44	1,216	52,042	2.44	5.2%	5.2%	-0.1%

MARPLOT disclaimer: The population and housing number given above are only rough estimates. They are based on the US Census Blocks. Although Census Blocks are polygons, MARPLOT uses the centroid, or center point, rather than the entire polygon. If a Census Block centroid is within any of the MARPLOT selected objects, the population and housing numbers for that block are tallied, even if only part of the block is within the selected object. It is possible for a block not be counted if its centroid is not within selected objects, even though part of the block is within the selected objects.

Housing Projections (Combined)



Population Projections (Combined)



California Water Service Company - Mid-Peninsula District (Combined) Water Supply and Demand Analysis and Projections Population Estimate

Year	US Census		Persons per Housing Unit	Single Family Residential		Multi Family Residential		Flat Rate Residential Services (DU)
	Population	Housing Units		Residential Services (DU)	Unit Density	Residential Units (DU)	Unit Density	
2000	120,632	49,466	2.439	30,863	576	18,603	32.3	0
2010	126,850	52,042	2.437	31,028	630	21,014	33.3	0
	5.2%	5.2%	-0.1%	0.5%	9.4%	13.0%	3.2%	0.0%

Year	Single Family Residential Services (DU)	Multi Family Residential		Flat Rate Residential Services (DU)	Residential Dwelling Units	Persons per Housing Unit	Estimated District Population
		Services	Residential Units (DU)				
1995	30,608	573	18,525	0	49,133	2.439	119,844
1996	30,810	573	18,528	0	49,338	2.439	120,328
1997	30,818	574	18,556	0	49,373	2.439	120,413
1998	30,836	575	18,582	0	49,418	2.439	120,519
1999	30,853	576	18,590	0	49,443	2.439	120,578
2000	30,863	576	18,603	0	49,466	2.439	120,632
2001	30,943	583	18,844	0	49,787	2.439	121,408
2002	30,934	581	19,085	0	50,018	2.438	121,967
2003	31,043	577	19,326	0	50,369	2.438	122,817
2004	31,065	579	19,567	0	50,632	2.438	123,451
2005	31,107	579	19,808	0	50,915	2.438	124,135
2006	31,128	573	20,049	0	51,177	2.438	124,768
2007	31,139	571	20,291	0	51,430	2.438	125,378
2008	31,060	600	20,532	0	51,592	2.438	125,766
2009	30,955	628	20,773	0	51,728	2.438	126,091
2010	31,028	630	21,014	0	52,042	2.437	126,850
2011	31,128	644	21,255	0	52,383	2.437	127,681
2012	31,146	648	21,384	0	52,530	2.437	128,037
2013	31,170	660	21,768	0	52,938	2.437	129,037
2014	31,211	677	22,348	0	53,559	2.438	130,559
2015	31,219	712	23,502	0	54,721	2.438	133,405
2020	31,430	778	25,720	0	57,150	2.438	139,348
2025	31,643	852	28,148	0	59,790	2.439	145,810
2030	31,857	931	30,806	0	62,662	2.439	152,839
2035	32,072	1,019	33,716	0	65,788	2.439	160,489
2040	32,289	1,115	36,902	0	69,191	2.440	168,818

Notes: linear extrapolation used to estimated MFR-DU from 2000. Estimate extend until 2011 due to reclassification, afterwards a constant MFR Unit Density is used.

ACTUAL
PROJECTED
I
V

ACTUAL
PROJECTED
I
V

Appendix C: Correspondences

- UWMP Public Draft Comments

Note: There were no comments received on the UWMP Public Draft.