

## **Appendix C: Correspondences**

- UWMP Notice of Preparation, March 10, 2016
- Growth Projection Letter to Cities and Counties
- UWMP Public Draft Comments

## **Appendix C: Correspondences**

- UWMP Notice of Preparation, March 10, 2016



## CALIFORNIA WATER SERVICE

1720 North First Street  
San Jose, CA 95112-4598 Tel: (408) 367-8200

March 10, 2016

[Name\_F] [Name\_L]  
[Organization]  
[Address]  
[City], CA [ZipCode]

Dear [Title] [Name\_L]:

California Water Service (Cal Water) is committed to providing safe, reliable, and high-quality water utility service in our Livermore service area. At Cal Water, one of our top priorities is ensuring that our customers have a sustainable supply of water for decades to come.

With that in mind, we wanted to take this opportunity to let you know that we are updating our Urban Water Management Plan (UWMP) for this service area. This UWMP is reviewed and updated every five years pursuant to the Urban Water Management Plan Act, and will be completed by July 1, 2016. Our UWMP is a foundational document that supports our long-term water resource planning to ensure our customers have adequate water supplies to meet current and future demands.

Proposed revisions to our 2010 UWMP will be made available for public review, and we will be holding a public hearing, during which the updates for the 2015 UWMP will be discussed. The draft 2015 UWMP and the date, time and location of the public hearing will be available on our web site in a few weeks at [www.calwater.com/conservation/uwmp](http://www.calwater.com/conservation/uwmp). A hard copy of the draft UWMP will also be available at our Livermore Customer Center located at 195 South N Street, Livermore, CA 94550.

If you have any questions about the UWMP for this service area, please contact Michael Bolzowski, Cal Water Senior Engineer, at (408) 367-8338 or e-mail [Planninginfo@calwater.com](mailto:Planninginfo@calwater.com).

Sincerely,

A handwritten signature in black ink that reads "Scott Wagner".

Scott Wagner  
Director of Capital Planning & Water Resources

Council Member Spedowfski  
Council Member  
City of Livermore  
195 South N Street  
Livermore, CA 94550  
sspedowfski@cityoflivermore.net

Council Member Woerner  
Council Member  
City of Livermore  
195 South N Street  
Livermore, CA 94550  
BWoerner@cityoflivermore.net

Supervisor Haggerty  
Supervisor  
City of Livermore  
195 South N Street  
Livermore, CA 94550  
district1@acgov.org

Darren Greenwood  
Water Resources Manager  
City of Livermore  
195 South N Street  
Livermore, CA 94550  
dggreenwood@cityoflivermore.net

Kurt Arends  
Assistant General Manager  
Zone 7 Water Agency  
195 South N Street  
Livermore, CA 94550  
karends@zone7water.com

Council Member Turner  
Council Member  
City of Livermore  
195 South N Street  
Livermore, CA 94550  
leturner@cityoflivermore.net

Mayor Marchand  
Mayor  
City of Livermore  
195 South N Street  
Livermore, CA 94550  
jpmarchand@ci.livermore

Vice Mayor Gary  
Vice Mayor  
City of Livermore  
195 South N Street  
Livermore, CA 94550  
swgary@cityoflivermore.net

Helen Ling  
Water Resources Division Manager  
Livermore Water Reclamation Plant  
195 South N Street  
Livermore, CA 94550  
hfling@cityoflivermore.net

## **Appendix C: Correspondences**

- Growth Projection Letter to Cities and Counties

## Blanusa, Danilo

---

**From:** Salzano, Tom  
**Sent:** Wednesday, October 28, 2015 2:07 PM  
**To:** Dana d'Angelo (dkdangelo@cityoflivermore.net)  
**Cc:** Vallejo, Frank; Bolzowski, Michael R.; Blanusa, Danilo  
**Subject:** FW: Cal Water Urban Water Management Plan (UWMP) growth forecast for your review - Livermore District  
**Attachments:** Letter to City Planning Officials - Attachmet - LIV.pdf  
**Follow Up Flag:** Follow up  
**Flag Status:** Flagged  
**Categories:** Blue Category

Dana,

Here is the package I mentioned on our phone conversation today regarding that was sent to Mr. Greenwood. It discusses our process a bit and the attachment contains the information we are currently using to forecast population and housing growth for our Livermore system. As I mentioned if you have further questions I suggest that you contact Michael Bolzowski at 408-367-8338 or by email at

[mbolzowski@calwater.com](mailto:mbolzowski@calwater.com)

I hope this is useful.

Tom

*Thomas A. Salzano*

Water Resource Planning Supervisor

California Water Service

1720 North First Street, San Jose, CA 95112-4598

(408) 367-8340

tsalzano@calwater.com

---

**From:** Blanusa, Danilo  
**Sent:** Wednesday, August 19, 2015 3:47 PM  
**To:** Darren Greenwood (dggreenwood@cityoflivermore.net)  
**Cc:** Salzano, Tom; Bolzowski, Michael R.; Keck, Jonathan; Vallejo, Frank  
**Subject:** Cal Water Urban Water Management Plan (UWMP) growth forecast for your review - Livermore District

Dear Mr. Greenwood,

Pursuant to California Water Code, Division 6, Part 2.6, Sections 10610 through 10656, California Water Service is in the process of preparing the required 2015 update of our Urban Water Management Plans. These plans are required to be updated every five (5) years for each of our services areas (Districts). As you know our Livermore District provides water service to the City of Livermore.

The purpose of this communication is to solicit your assistance in reviewing and advising us with respect to one of the key elements of the plan, which is the development of a growth forecast for our district. This growth forecast is conducted based on growth in each customer service classification applicable to a particular district, which typically include:

- Single family residential
- Multi-family residential
- Commercial
- Industrial

- Government (City or County parks, median strips, landscaping and schools)
- Dedicated Irrigation (rare)
- Other (temporary construction meters)

The forecasted growth rates are combined with a demand per service factor applicable to each customer class to determine the future water demands for the district. These growth factors are adjustable and we want to review them with you so that we are consistent with anticipated growth that your planning efforts forecast. If adjustments are necessary we can do them now and avoid conflicts and confusion later in this process.

Some specific information regarding our approach to forecasting customer service growth is detailed as follows:

- **Residential** – Typically two residential customer service categories represent the vast majority of the service counts as well as subsequent water sales or demand in our districts. Cal Water considers both single family and multi-family residential services independently as individual classes, but combines them together in order to assess population growth and housing unit growth. While we use historical trends in the establishment for the growth rates for these two customer classes, we also analyze census data for population and housing factors and compare our forecast results for these two parameters with available data from City General Plans, as well as County Economic Forecast data and Regional government association forecasts as a reality or appropriateness check of our results.
- **Commercial & Industrial** – Historical trend is a key influence in this customer class, however where we have seen negative trends in recent years for these categories due to the economic downturn, we typically employ either a zero rate of growth or a small, reasonable positive rate of growth. We have also undertaken during the last ten years some reassessment of customer service classifications that has resulted in reallocation of some customer service accounts between various classes. This reallocation, which included commercial, industrial, multi-family residential and in some cases government services, has made the analysis of growth a bit more difficult.
- **Government** – Growth trends are generally parallel to that of the residential sector, so we verify that our rate of grow is not dramatically out-of-sequence with the overall community.
- **Other** – The use of temporary-assigned construction meters varies considerably from year to year, and can represent considerable water demand. In this case, we select a growth rate that is stable, yet reflects the overall growth of the community.

We have included with this communication a set of tables and graphs (see attachment) that illustrate the parameters that influence the growth forecast as currently set up for this district. These include:

- A. The historical and projected service data in both graph and table form
- B. The 2000 and 2010 Census data for the districts service area
- C. Housing projection chart comparing Cal Water's forecast (always in red) with those from other organizations
- D. Population projection chart comparing Cal Water's forecast (always in red) with those from other organizations
- E. Table of population and housing values along with multi-family residential unit density and persons per housing unit density that are employed in this forecast effort.

Please note that the 2015 data, which we need to include in our finished forecast, is not yet final, and some minor fluctuation of these values is possible.

Please examine these documents to determine if you concur with our forecasted housing and population numbers. It would be greatly appreciated if you could, by **September 11, 2015**, provide us with an indication of your support or in the case you do not agree with our forecast a reason why and the appropriate rate or growth pattern that we should

employ. **If I do not hear back from you by the end of business (EOB) on the above date I will assume that you concur with our forecast.**

If you need a more detailed explanation of these numbers or want to review them with us please feel free to contact me at (408) 367-8340 or by email at [tsalzano@calwater.com](mailto:tsalzano@calwater.com).

Thank you for your assistance in this effort.

Respectfully,

*Thomas A. Salzano*

Thomas A. Salzano  
Water Resource Planning Supervisor

**Danilo Blanus, P.E.**

Senior Engineer

**CALIFORNIA WATER SERVICE**

**408-367-8387**

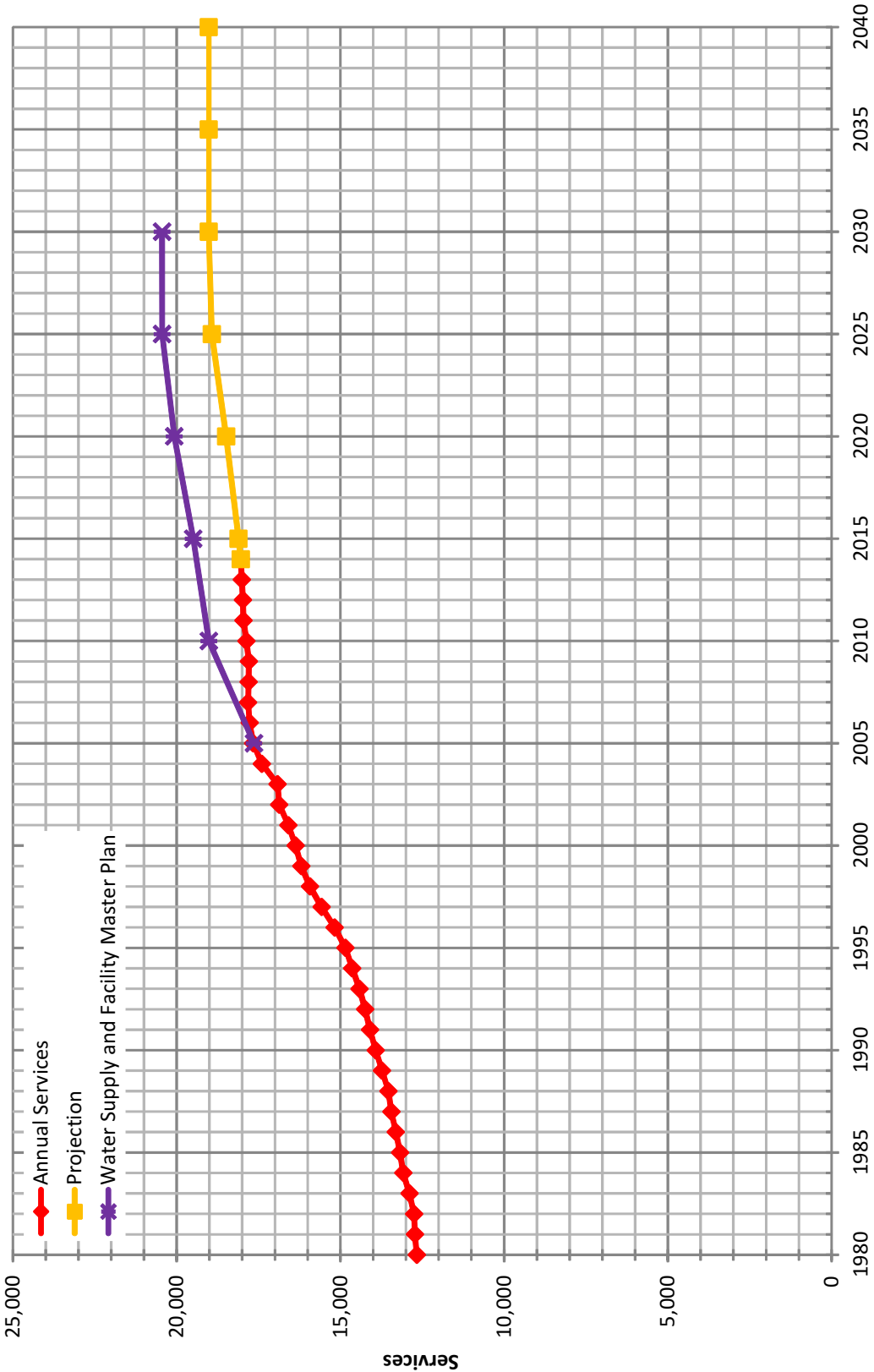


**Quality. Service. Value.**

[calwater.com](http://calwater.com)



# Historical & Projected Services



**California Water Service Company - Livermore District**  
**Water Supply and Demand Analysis and Projections**  
**Actual & Projected Annual Average Services**

Worksheet 8

Customer Category		Selected Trend	Growth Rate	Actual Services				Base Year	Projected Services					
				2000	2005	2010	2014	2014	2015	2020	2025	2030	2035	2040
SFR	SFR_E	Master Plan	0.14%	15,300	16,457	16,521	16,695	16,695	16,718	16,837	16,957	16,981	16,981	16,981
MFR	MFR_E	Master Plan	5.00%	75	75	77	88	88	92	117	150	157	157	157
COM	COM_E	Master Plan	3.99%	805	925	1,022	1,012	1,012	1,053	1,280	1,557	1,619	1,619	1,619
IND	IND_A	Zero Growth Rate	0.00%	3	1	0	0	0	0	0	0	0	0	0
GOV	GOV_E	Master Plan	0.22%	163	174	234	233	233	234	236	239	240	240	240
OTH	OTH_E	Master Plan	5.55%	23	31	15	13	13	14	18	24	25	25	25
TOTAL	Average growth rate 2011-2040		0.20%	16,369	17,663	17,869	18,041	18,041	18,111	18,489	18,926	19,021	19,021	19,021

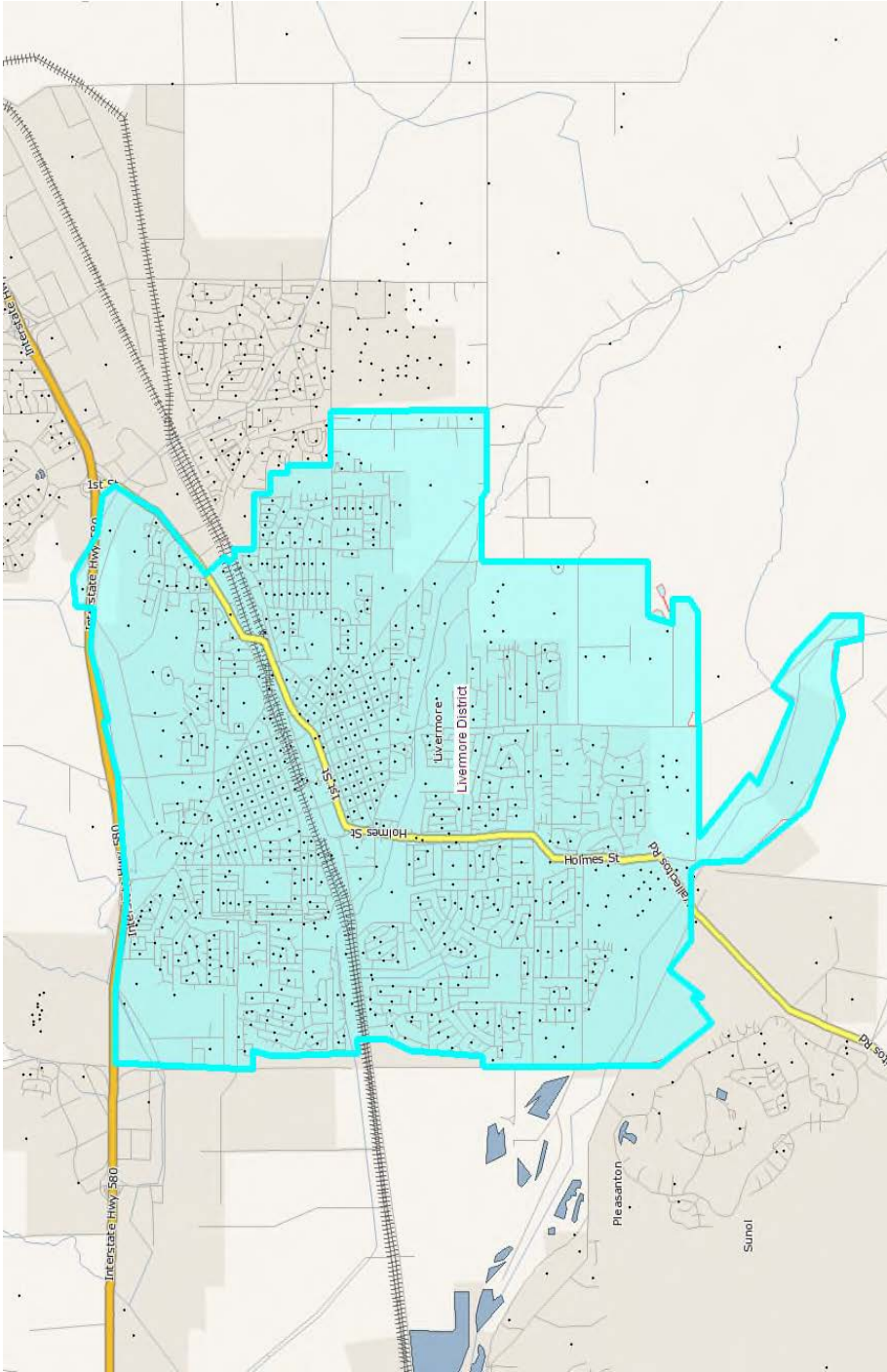
## Notes:

Rate adjusted to reflect service count in Master Plan

SFR	0.142%
MFR	5.000%
COM	3.990%
IND	7.000%
GOV	0.220%
OTH	5.550%

Growth rate assumed after 2025 buildout 0.000%

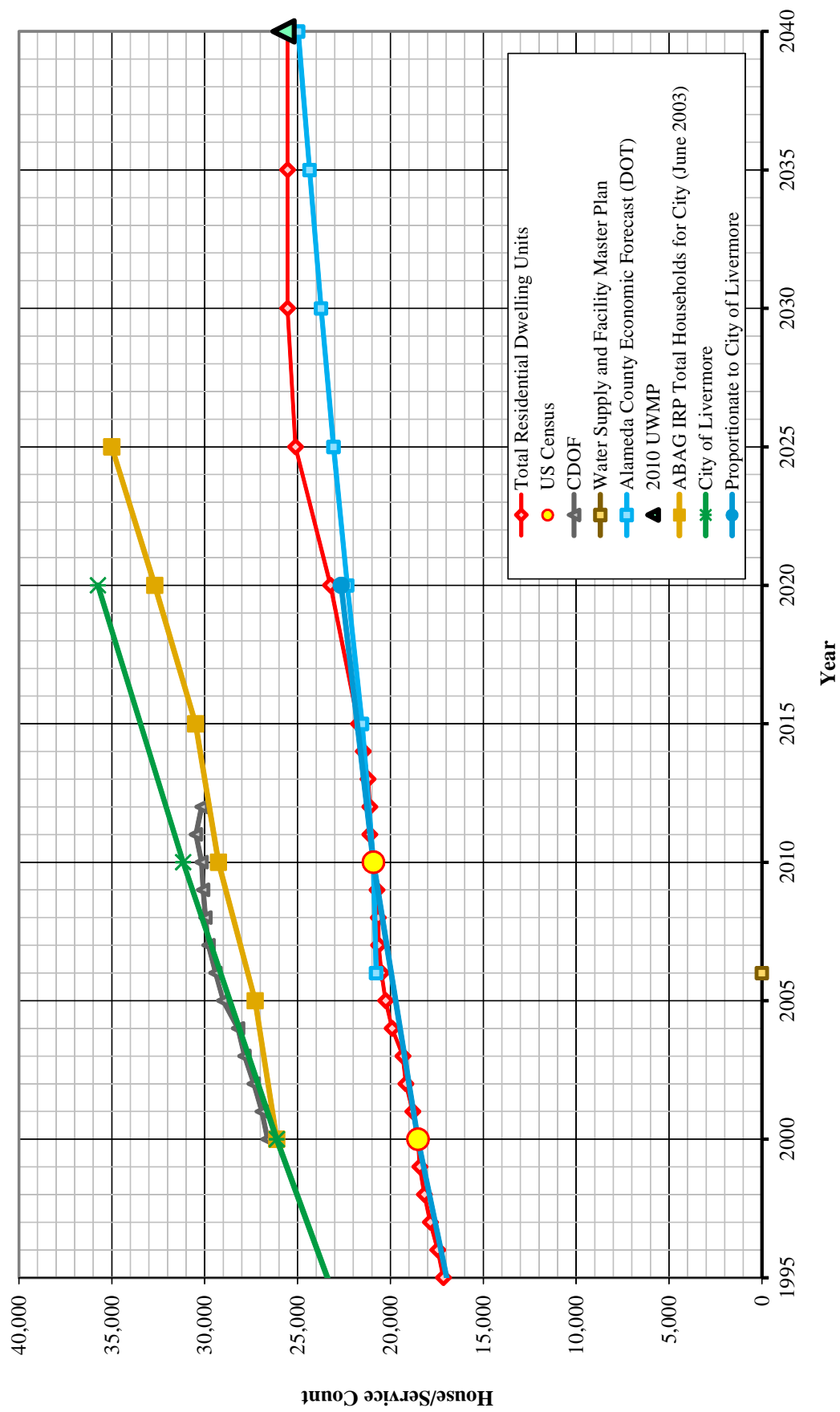
California Water Service Company - Livermore District  
Water Supply and Demand Analysis and Projections  
Marplot Summary



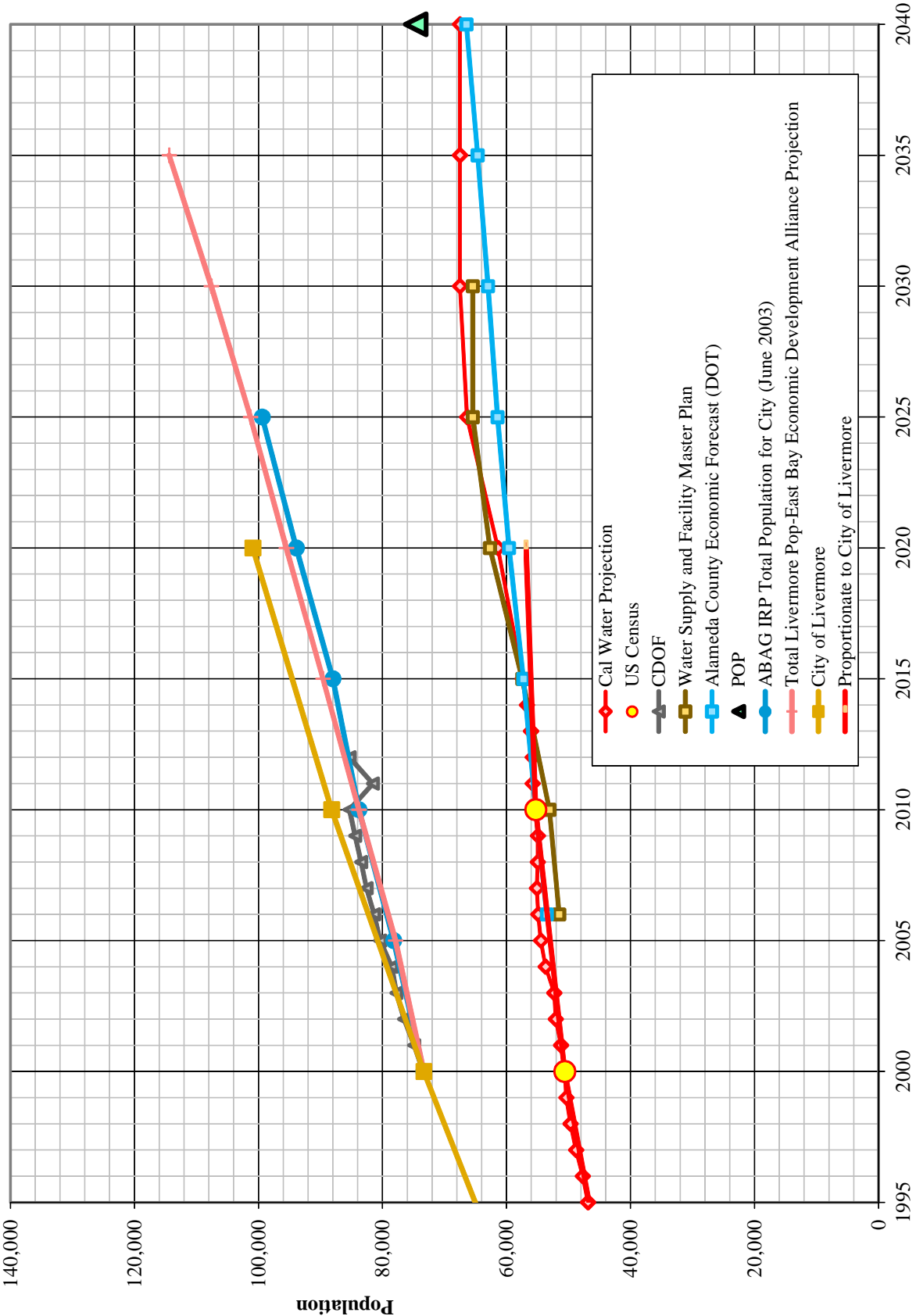
System	US Census 2000 Summary			US Census 2010 Summary			2000-2010 Change		
	Census Blocks	Population	Housing Units (HU)	Density	Census Blocks	Population	Housing Units (HU)	Density	Density Change
Livermore	575	50,622	18,518	2.73	709	55,285	20,917	2.64	-3.3%
	575	50,622	18,518	2.73	709	55,285	20,917	2.64	96.7%

MARPLOT disclaimer: The population and housing number given above are only rough estimates. They are based on the US Census Blocks. Although Census Blocks are polygons, MARPLOT uses the centroid, or center point, rather than the entire polygon. If a Census Block centroid is within any of the MARPLOT selected objects, the population and housing numbers for that block are tallied, even if only part of the block is within the selected object. It is possible for a block not be counted if its centroid is not within selected objects, even though part of the block is within the selected objects.

# Housing Projections



# Population Projections



## California Water Service Company - Livermore District

### Water Supply and Demand Analysis and Projections

#### Population Estimate

Year	US Census		Persons per Housing Unit	Single Family		Multi Family Residential			Flat Rate	
	Population	Housing Units		Residential Services (DU)	Unit Density	Services	Residential Units (DU)	Unit Density	Residential Services (DU)	Residential Services (DU)
2000	50,622	18,518	2.734	15,300	42.9	75	3,218	42.9	0	0
2010	55,285	20,917	2.643	16,521	42.9	77	4,396	56.8	0	0
	9.2%	13.0%	-3.3%	8.0%	42.9	3.1%	36.6%	32.5%	0.0%	0.0%

Year	Single Family Residential Services (DU)	Multi Family Residential		Flat Rate Residential Services (DU)	Total Residential Dwelling Units	Persons per Housing Unit	Estimated District Population
		Services	Residential Units (DU)				
1995	13,919	75	3,225	0	17,144	2.734	46,865
1996	14,236	75	3,218	0	17,454	2.734	47,713
1997	14,628	75	3,218	0	17,846	2.734	48,785
1998	14,958	75	3,218	0	18,176	2.734	49,688
1999	15,200	75	3,218	0	18,418	2.734	50,349
2000	15,300	75	3,218	0	18,518	2.734	50,622
2001	15,461	75	3,336	0	18,797	2.725	51,214
2002	15,718	75	3,453	0	19,171	2.716	52,060
2003	15,755	75	3,571	0	19,327	2.706	52,307
2004	16,216	75	3,689	0	19,905	2.697	53,693
2005	16,457	75	3,807	0	20,263	2.688	54,475
2006	16,560	75	3,925	0	20,484	2.679	54,883
2007	16,596	75	4,042	0	20,639	2.670	55,110
2008	16,496	76	4,160	0	20,656	2.661	54,971
2009	16,443	76	4,278	0	20,721	2.652	54,954
2010	16,521	77	4,396	0	20,917	2.643	55,285
2011	16,601	83	4,514	0	21,114	2.643	55,807
2012	16,621	83	4,491	0	21,112	2.643	55,800
2013	16,654	84	4,554	0	21,208	2.643	56,055
2014	16,695	88	4,767	0	21,462	2.643	56,726
2015	16,718	92	5,006	0	21,724	2.643	57,418
2020	16,837	117	6,389	0	23,226	2.643	61,387
2025	16,957	150	8,154	0	25,110	2.643	66,368
2030	16,981	157	8,561	0	25,542	2.643	67,509
2035	16,981	157	8,561	0	25,542	2.643	67,509
2040	16,981	157	8,561	0	25,542	2.643	67,509

Notes: linear extrapolation used to estimated MFR-DU from 2000. Estimate extend until 2011 due to reclassification, afterwards a constant MFR Unit Density is used.

## Blanusa, Danilo

---

**From:** Blanusa, Danilo  
**Sent:** Wednesday, August 19, 2015 3:47 PM  
**To:** 'Darren Greenwood (dggreenwood@cityoflivermore.net)'  
**Cc:** Salzano, Tom; Bolzowski, Michael R.; Keck, Jonathan; Vallejo, Frank  
**Subject:** Cal Water Urban Water Management Plan (UWMP) growth forecast for your review - Livermore District  
**Attachments:** Letter to City Planning Officials - Attachmet - LIV.pdf

Tracking:	Recipient	Delivery
	'Darren Greenwood (dggreenwood@cityoflivermore.net)'	
	Salzano, Tom	Delivered: 8/19/2015 3:47 PM
	Bolzowski, Michael R.	Delivered: 8/19/2015 3:47 PM
	Keck, Jonathan	Delivered: 8/19/2015 3:47 PM
	Vallejo, Frank	Delivered: 8/19/2015 3:47 PM

Dear Mr. Greenwood,

Pursuant to California Water Code, Division 6, Part 2.6, Sections 10610 through 10656, California Water Service is in the process of preparing the required 2015 update of our Urban Water Management Plans. These plans are required to be updated every five (5) years for each of our services areas (Districts). As you know our Livermore District provides water service to the City of Livermore.

The purpose of this communication is to solicit your assistance in reviewing and advising us with respect to one of the key elements of the plan, which is the development of a growth forecast for our district. This growth forecast is conducted based on growth in each customer service classification applicable to a particular district, which typically include:

- Single family residential
- Multi-family residential
- Commercial
- Industrial
- Government (City or County parks, median strips, landscaping and schools)
- Dedicated Irrigation (rare)
- Other (temporary construction meters)

The forecasted growth rates are combined with a demand per service factor applicable to each customer class to determine the future water demands for the district. These growth factors are adjustable and we want to review them with you so that we are consistent with anticipated growth that your planning efforts forecast. If adjustments are necessary we can do them now and avoid conflicts and confusion later in this process.

Some specific information regarding our approach to forecasting customer service growth is detailed as follows:

- **Residential** – Typically two residential customer service categories represent the vast majority of the service counts as well as subsequent water sales or demand in our districts. Cal Water considers both single family and multi-family residential services independently as individual classes, but combines them together in order to assess population growth and housing unit growth. While we use historical trends in the establishment for the growth rates for these two customer classes, we also analyze census data for population and housing factors and compare our forecast results for these two parameters with available data from City General Plans, as well as County Economic Forecast data and Regional government association forecasts as a reality or appropriateness check of our results.

- **Commercial & Industrial** – Historical trend is a key influence in this customer class, however where we have seen negative trends in recent years for these categories due to the economic downturn, we typically employ either a zero rate of growth or a small, reasonable positive rate of growth. We have also undertaken during the last ten years some reassessment of customer service classifications that has resulted in reallocation of some customer service accounts between various classes. This reallocation, which included commercial, industrial, multi-family residential and in some cases government services, has made the analysis of growth a bit more difficult.
- **Government** – Growth trends are generally parallel to that of the residential sector, so we verify that our rate of grow is not dramatically out-of-sequence with the overall community.
- **Other** – The use of temporary-assigned construction meters varies considerably from year to year, and can represent considerable water demand. In this case, we select a growth rate that is stable, yet reflects the overall growth of the community.

We have included with this communication a set of tables and graphs (see attachment) that illustrate the parameters that influence the growth forecast as currently set up for this district. These include:

- A. The historical and projected service data in both graph and table form
- B. The 2000 and 2010 Census data for the districts service area
- C. Housing projection chart comparing Cal Water's forecast (always in red) with those from other organizations
- D. Population projection chart comparing Cal Water's forecast (always in red) with those from other organizations
- E. Table of population and housing values along with multi-family residential unit density and persons per housing unit density that are employed in this forecast effort.

Please note that the 2015 data, which we need to include in our finished forecast, is not yet final, and some minor fluctuation of these values is possible.

Please examine these documents to determine if you concur with our forecasted housing and population numbers. It would be greatly appreciated if you could, by **September 11, 2015**, provide us with an indication of your support or in the case you do not agree with our forecast a reason why and the appropriate rate or growth pattern that we should employ. **If I do not hear back from you by the end of business (EOB) on the above date I will assume that you concur with our forecast.**

If you need a more detailed explanation of these numbers or want to review them with us please feel free to contact me at (408) 367-8340 or by email at [tsalzano@calwater.com](mailto:tsalzano@calwater.com).

Thank you for your assistance in this effort.

Respectfully,

*Thomas A. Salzano*

Thomas A. Salzano  
Water Resource Planning Supervisor

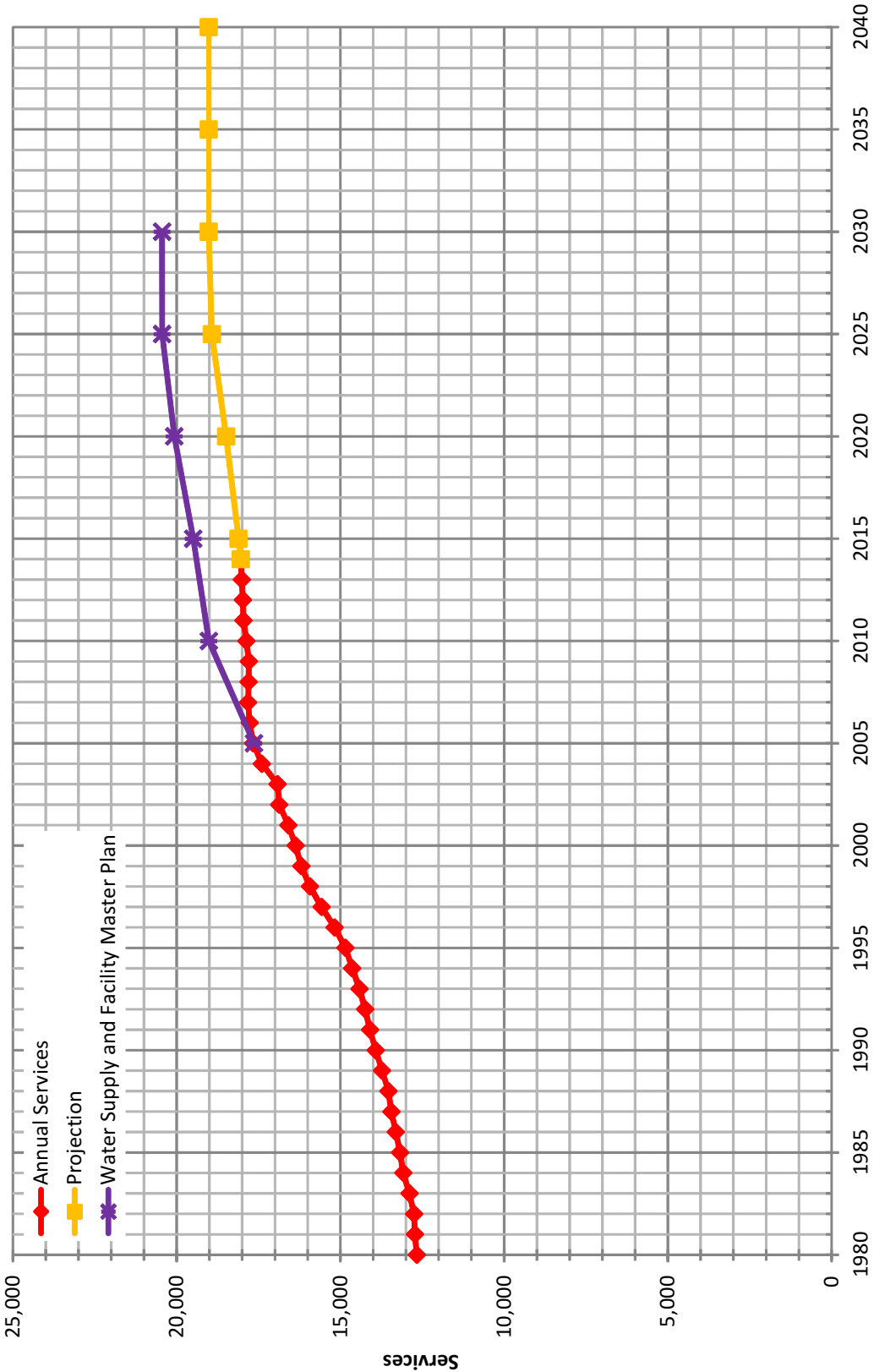
**Danilo Blanus, P.E.**  
Senior Engineer  
CALIFORNIA WATER SERVICE  
408-367-8387





**Quality. Service. Value.**  
[calwater.com](http://calwater.com)

# Historical & Projected Services



**California Water Service Company - Livermore District**  
**Water Supply and Demand Analysis and Projections**  
**Actual & Projected Annual Average Services**

Worksheet 8

Customer Category		Selected Trend	Growth Rate	Actual Services				Base Year	Projected Services					
				2000	2005	2010	2014	2014	2015	2020	2025	2030	2035	2040
SFR	SFR_E	Master Plan	0.14%	15,300	16,457	16,521	16,695	16,695	16,718	16,837	16,957	16,981	16,981	16,981
MFR	MFR_E	Master Plan	5.00%	75	75	77	88	88	92	117	150	157	157	157
COM	COM_E	Master Plan	3.99%	805	925	1,022	1,012	1,012	1,053	1,280	1,557	1,619	1,619	1,619
IND	IND_A	Zero Growth Rate	0.00%	3	1	0	0	0	0	0	0	0	0	0
GOV	GOV_E	Master Plan	0.22%	163	174	234	233	233	234	236	239	240	240	240
OTH	OTH_E	Master Plan	5.55%	23	31	15	13	13	14	18	24	25	25	25
TOTAL	Average growth rate 2011-2040		0.20%	16,369	17,663	17,869	18,041	18,041	18,111	18,489	18,926	19,021	19,021	19,021

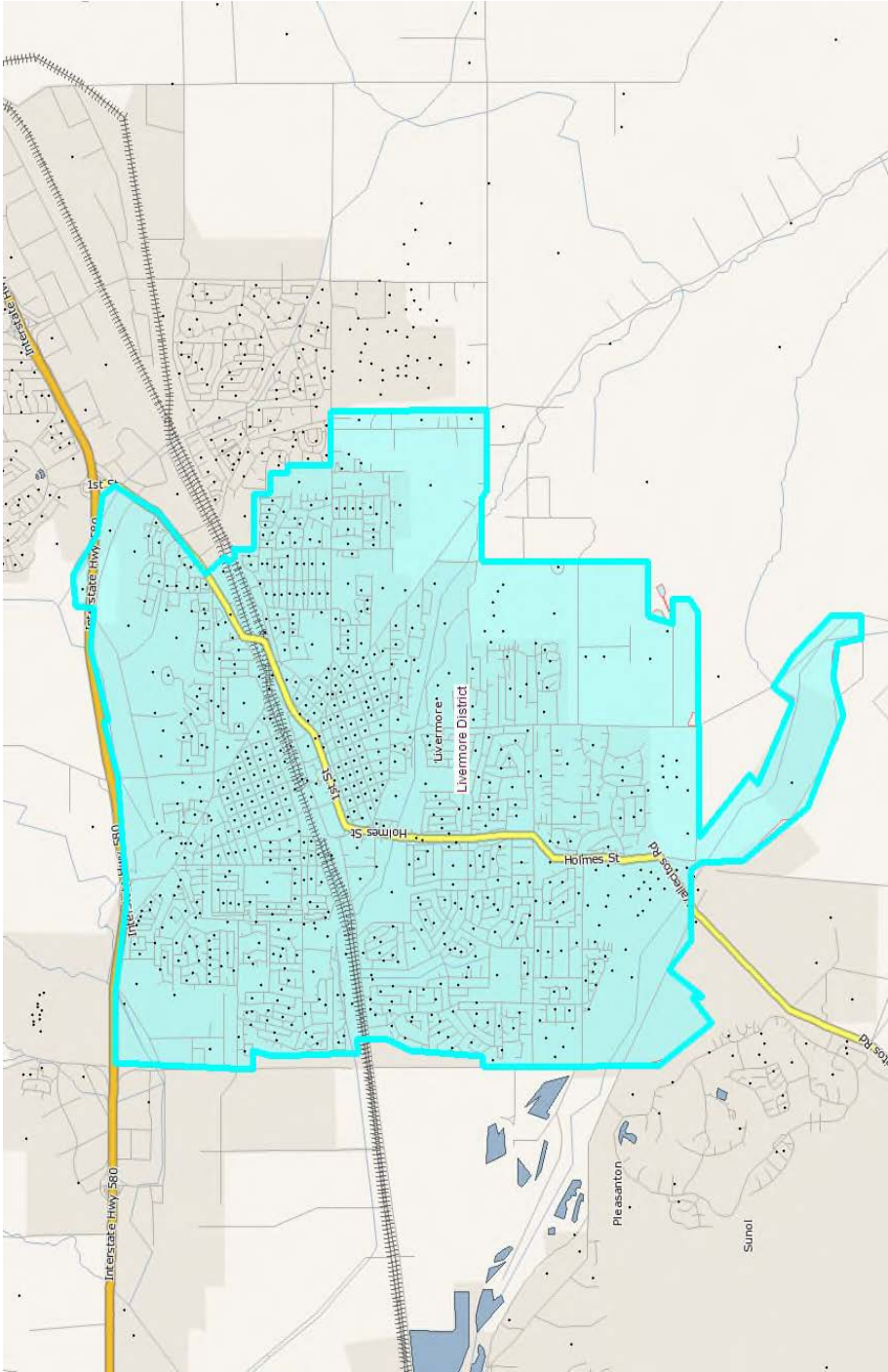
## Notes:

Rate adjusted to reflect service count in Master Plan

SFR	0.142%
MFR	5.000%
COM	3.990%
IND	7.000%
GOV	0.220%
OTH	5.550%

Growth rate assumed after 2025 buildout 0.000%

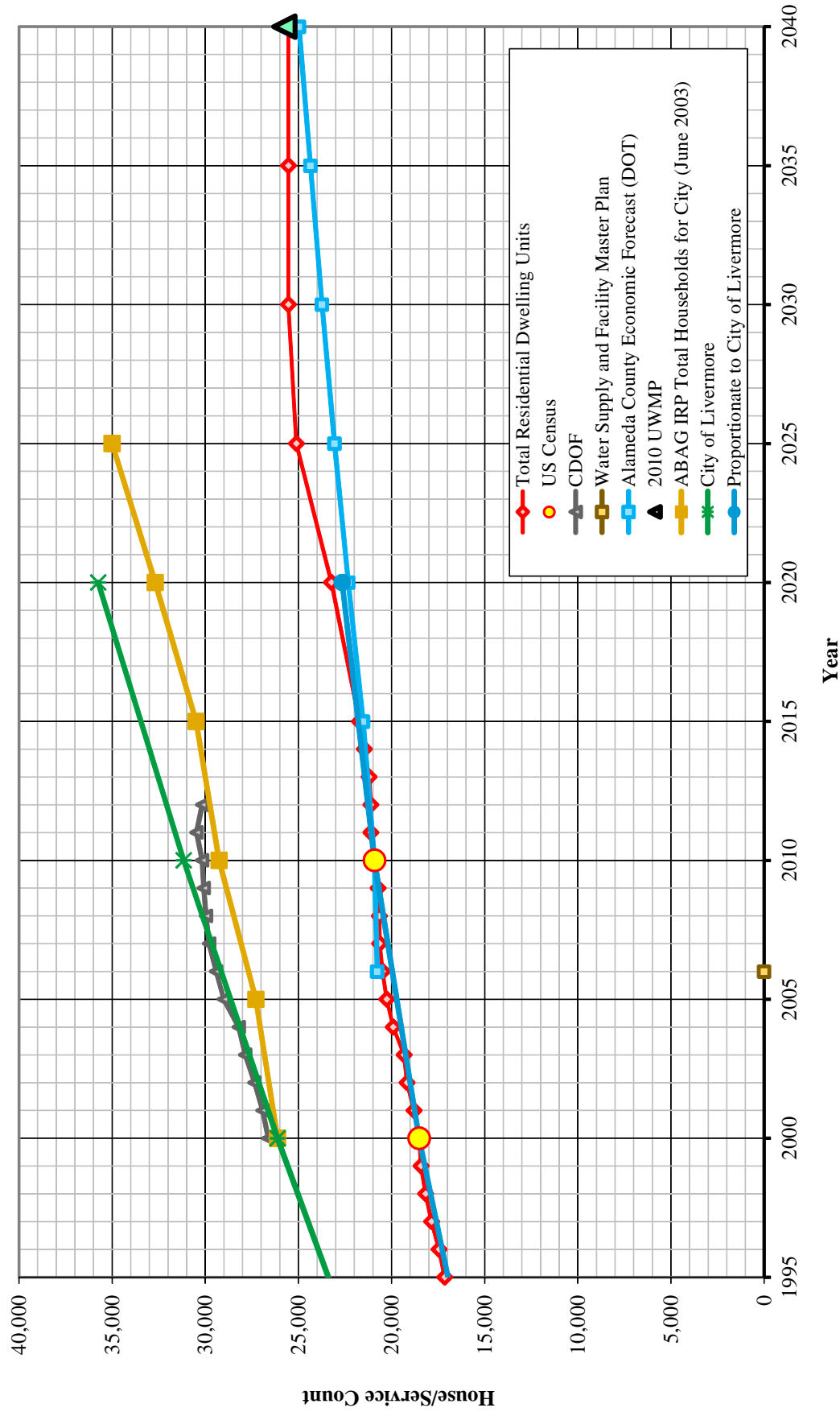
California Water Service Company - Livermore District  
Water Supply and Demand Analysis and Projections  
Marplot Summary



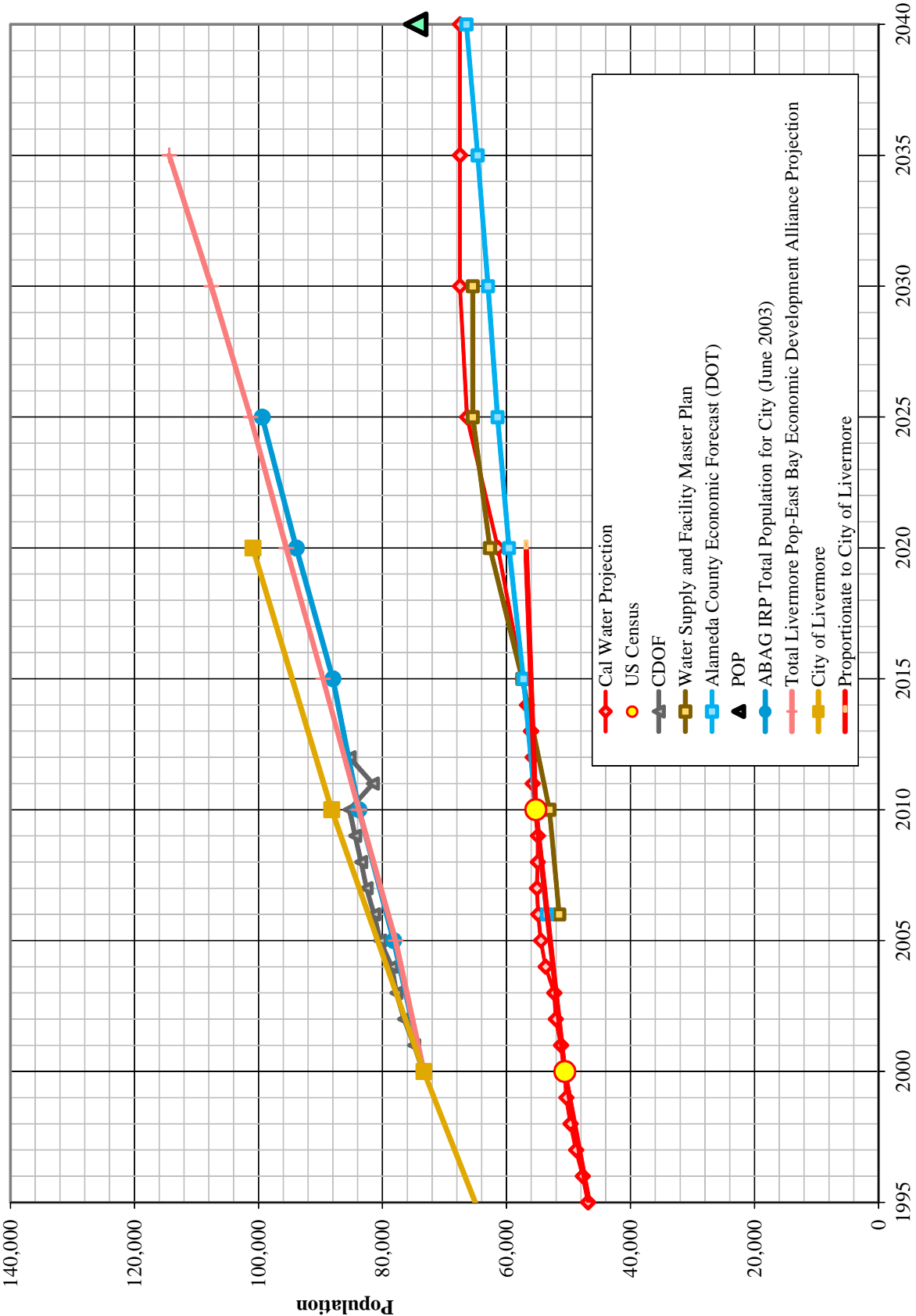
System	US Census 2000 Summary			US Census 2010 Summary			2000-2010 Change		
	Census Blocks	Population	Housing Units (HU)	Density	Census Blocks	Population	Housing Units (HU)	Density	Density Change
Livermore	575	50,622	18,518	2.73	709	55,285	20,917	2.64	-3.3%
	575	50,622	18,518	2.73	709	55,285	20,917	2.64	96.7%

MARPLOT disclaimer: The population and housing number given above are only rough estimates. They are based on the US Census Blocks. Although Census Blocks are polygons, MARPLOT uses the centroid, or center point, rather than the entire polygon. If a Census Block centroid is within any of the MARPLOT selected objects, the population and housing numbers for that block are tallied, even if only part of the block is within the selected object. It is possible for a block not be counted if its centroid is not within selected objects, even though part of the block is within the selected objects.

# Housing Projections



# Population Projections



# California Water Service Company - Livermore District

## Water Supply and Demand Analysis and Projections

### Population Estimate

Year	US Census		Persons per Housing Unit	Single Family		Multi Family Residential			Flat Rate	
	Population	Housing Units		Residential Services (DU)	Unit Density	Services	Residential Units (DU)	Unit Density	Residential Services (DU)	Residential Services (DU)
2000	50,622	18,518	2,734	15,300	42.9	75	3,218	42.9	0	0
2010	55,285	20,917	2,643	16,521	42.9	77	4,396	56.8	0	0
	9.2%	13.0%	-3.3%	8.0%	42.9	3.1%	36.6%	32.5%	0.0%	0.0%

Year	Single Family Residential Services (DU)	Multi Family Residential		Flat Rate Residential Services (DU)	Total Residential Dwelling Units	Persons per Housing Unit	Estimated District Population
		Services	Residential Units (DU)				
1995	13,919	75	3,225	0	17,144	2.734	46,865
1996	14,236	75	3,218	0	17,454	2.734	47,713
1997	14,628	75	3,218	0	17,846	2.734	48,785
1998	14,958	75	3,218	0	18,176	2.734	49,688
1999	15,200	75	3,218	0	18,418	2.734	50,349
2000	15,300	75	3,218	0	18,518	2.734	50,622
2001	15,461	75	3,336	0	18,797	2.725	51,214
2002	15,718	75	3,453	0	19,171	2.716	52,060
2003	15,755	75	3,571	0	19,327	2.706	52,307
2004	16,216	75	3,689	0	19,905	2.697	53,693
2005	16,457	75	3,807	0	20,263	2.688	54,475
2006	16,560	75	3,925	0	20,484	2.679	54,883
2007	16,596	75	4,042	0	20,639	2.670	55,110
2008	16,496	76	4,160	0	20,656	2.661	54,971
2009	16,443	76	4,278	0	20,721	2.652	54,954
2010	16,521	77	4,396	0	20,917	2.643	55,285
2011	16,601	83	4,514	0	21,114	2.643	55,807
2012	16,621	83	4,491	0	21,112	2.643	55,800
2013	16,654	84	4,554	0	21,208	2.643	56,055
2014	16,695	88	4,767	0	21,462	2.643	56,726
2015	16,718	92	5,006	0	21,724	2.643	57,418
2020	16,837	117	6,389	0	23,226	2.643	61,387
2025	16,957	150	8,154	0	25,110	2.643	66,368
2030	16,981	157	8,561	0	25,542	2.643	67,509
2035	16,981	157	8,561	0	25,542	2.643	67,509
2040	16,981	157	8,561	0	25,542	2.643	67,509

Notes: linear extrapolation used to estimated MFR-DU from 2000. Estimate extend until 2011 due to reclassification, afterwards a constant MFR Unit Density is used.

## **Appendix C: Correspondences**

- UWMP Public Draft Comments

Note: There were no comments received on the UWMP Public Draft.