

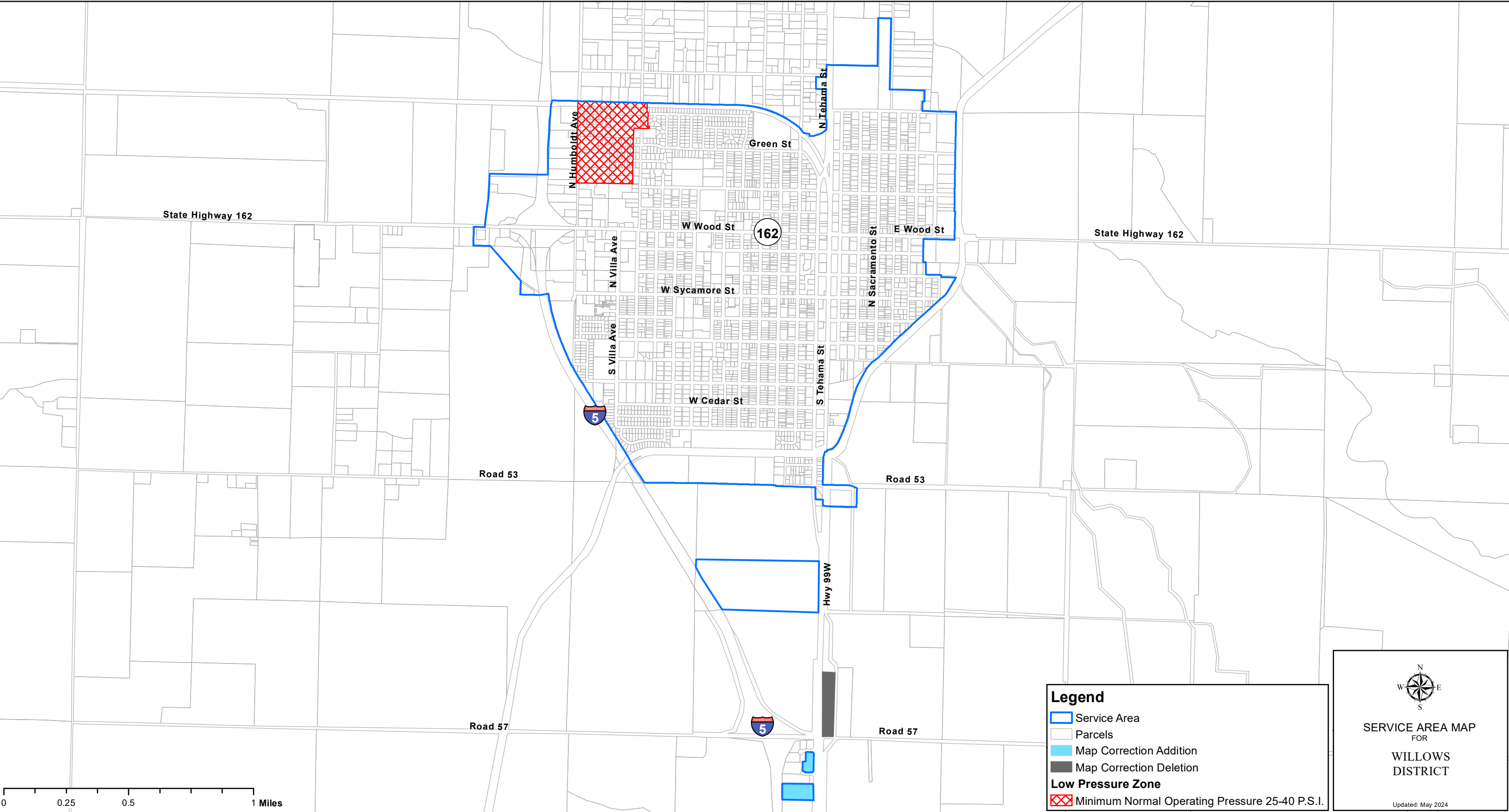


CALIFORNIA WATER SERVICE
 1720 North First Street, San Jose, CA 95112
 (408) 367 - 8200

This tariff has been approved by the California
 Public Utilities Commission and is effective 9/7/2024.


Revised Cal. P.U.C. Sheet No. 13581-W

Cancelling Cal. P.U.C. Sheet No. 13445-W



Legend

- Service Area
- Parcels
- Map Correction Addition
- Map Correction Deletion
- Low Pressure Zone**
- Minimum Normal Operating Pressure 25-40 P.S.I.


SERVICE AREA MAP
 FOR
WILLOWS
DISTRICT
Updated: May 2024

NOTE :
 This map may not be considered by the Public Utilities Commission of the State of California as a final conclusive determination or establishment of the dedicated area of service or any other portion thereof.

(To be inserted by Utility)

Advice Letter No. : 2525

Decision No. : _____

Issued By

Greg Milleman

NAME
Vice President of Rates and Regulatory Affairs
TITLE

(To be inserted by Cal. P.U.C.)

Date Filed : 08/08/2024

Effective : 09/07/2024

Resolution No. : _____