

Water Resources Planning Department

Water Supply / Demand Analysis and Projections
for
Mid-Peninsula District

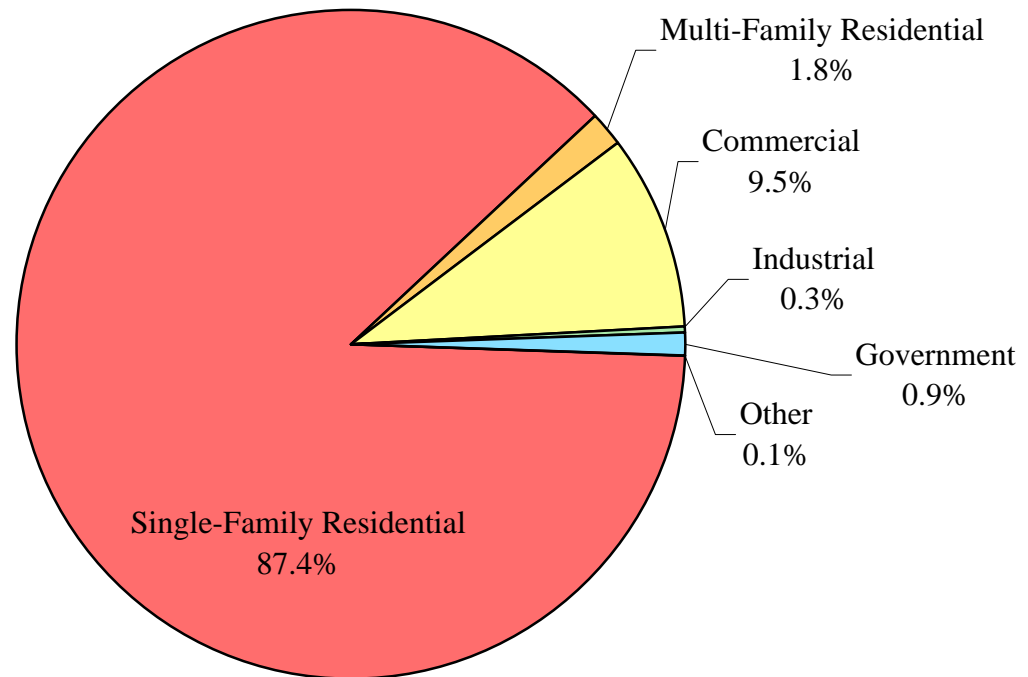
2010



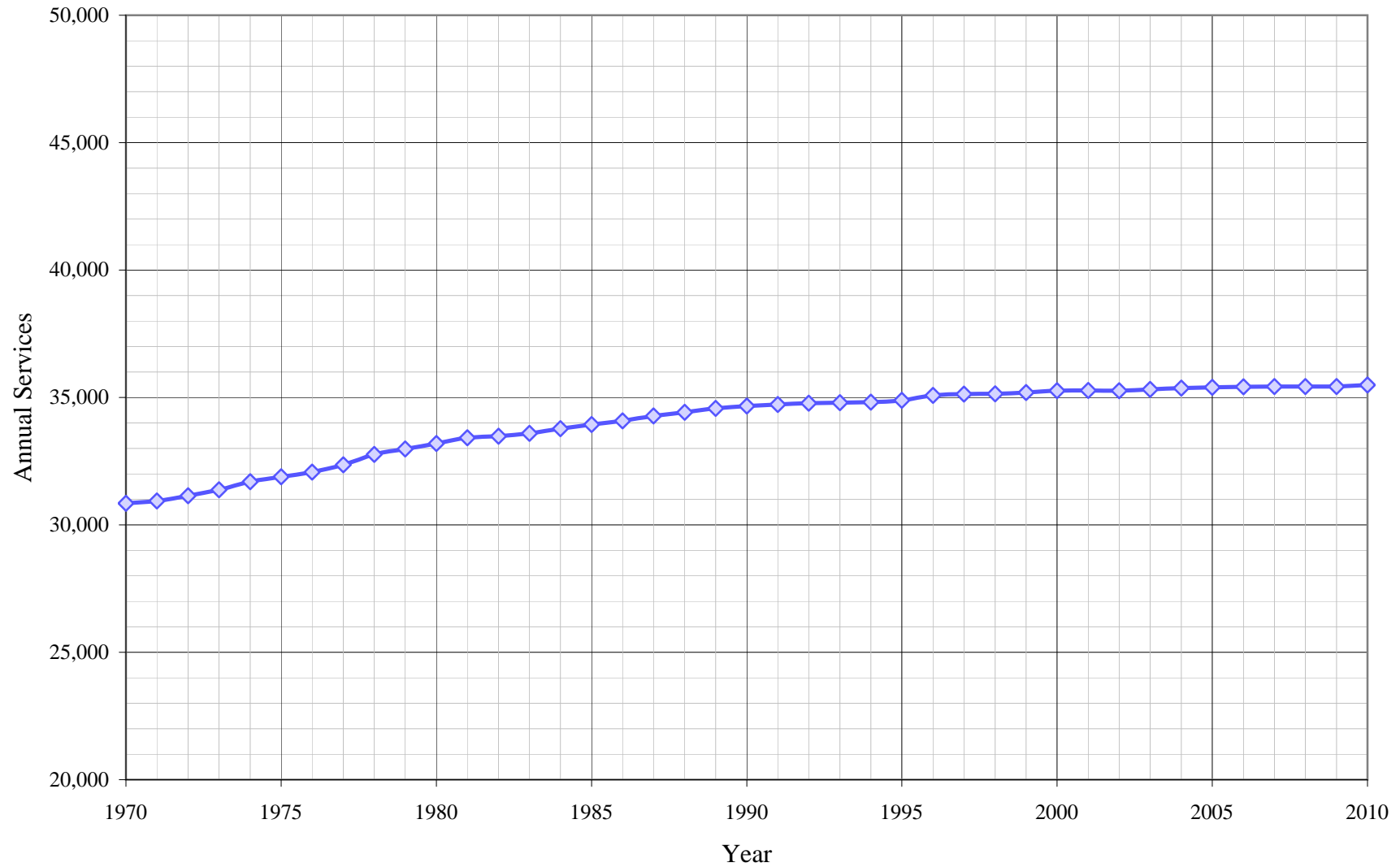
Table of Contents for Worksheets

Worksheet	Title
1	Annual Services
2	Service Growth Percentage
3	District Sales (ccf)
4	District Sales (AF)
5	Demand per Service (Gallons/Service/Year)
6	Demand per Service (Gallons per Day)
7	Percentage Change in Annual Demand
8	Percentage of Total Sales
9	Percentage of Total Demand
10	Demand Scenario 1 (Low Demand Projection)
11	Demand Scenario 2 (Average Demand Projection)
12	Demand Scenario 3 (High Demand Projection)
13	Demand Scenario 4 (Alternate Service Projection)
14	Demand Scenario 5 (Normal Water Year Projection)
15	Actual & Projected Annual Average Services
16	Actual & Projected Demand in Acre-Feet
17	Projected Annual Supply by Source
18	Historical and Projected Average Day, Maximum Day, and Peak Demands
19	Population as of the 2000 Average Annual Services
20	Temperature & Rainfall History
21	Groundwater Facilities (if available)
22	Per Capita Water Demand Calculation
23	Indoor/Outdoor Water Usage
24	SB-7 Compliance Demand Worksheet

Mid-Peninsula District Distribution of Services (2010)



Mid-Peninsula District Historical Services



California Water Service Company - Mid-Peninsula District
Water Supply and Demand Analysis and Projections
Service Growth Percentage

Year	Residential	Multi-Residential	Multi-Res. units	Commercial	Industrial	Government	Other	Total
1981	0.75%	0.81%	1.53%	0.21%	-1.68%	0.68%	8.70%	0.70%
1982	0.19%	2.22%	3.80%	0.06%	-1.71%	0.00%	-20.00%	0.19%
1983	0.31%	0.79%	1.82%	0.39%	0.00%	1.02%	5.00%	0.34%
1984	0.57%	0.00%	0.25%	0.30%	-3.48%	1.01%	4.76%	0.53%
1985	0.47%	2.75%	1.32%	0.36%	0.00%	0.33%	4.55%	0.49%
1986	0.46%	1.15%	0.29%	0.03%	0.00%	-0.33%	0.00%	0.42%
1987	0.60%	0.94%	2.98%	-0.03%	0.00%	1.00%	21.74%	0.56%
1988	0.45%	2.43%	5.00%	0.03%	-3.60%	0.33%	-7.14%	0.42%
1989	0.52%	1.46%	7.34%	-0.18%	-0.93%	0.66%	-3.85%	0.46%
1990	0.32%	0.72%	3.88%	-0.12%	-0.94%	-0.33%	-24.00%	0.26%
1991	0.24%	0.71%	-0.66%	-0.36%	-0.95%	-0.98%	21.05%	0.19%
1992	0.15%	0.18%	0.71%	0.00%	-1.92%	2.32%	-13.04%	0.14%
1993	0.09%	1.06%	1.27%	-0.33%	-1.96%	0.00%	-25.00%	0.04%
1994	0.14%	0.00%	2.10%	-0.67%	0.00%	-0.32%	13.33%	0.06%
1995	0.24%	0.35%	1.30%	-0.18%	1.00%	0.65%	0.00%	0.20%
1996	0.66%	0.00%	1.06%	-0.37%	0.00%	1.61%	-5.88%	0.56%
1997	0.11%	0.17%	-0.23%	0.21%	-0.99%	1.27%	25.00%	0.14%
1998	0.05%	0.52%	0.28%	-0.12%	-1.00%	0.94%	0.00%	0.05%
1999	0.12%	0.35%	0.30%	0.00%	1.01%	0.00%	45.00%	0.14%
2000	0.11%	0.52%	1.45%	0.67%	2.00%	0.93%	27.59%	0.20%
2001	0.04%	0.17%	2.62%	0.00%	0.00%	0.62%	-8.11%	0.03%
2002	-0.03%	-0.34%	0.00%	0.12%	0.00%	0.00%	-19.36%	-0.04%
2003	0.35%	-0.75%	0.92%	0.21%	-2.94%	-14.98%	-20.36%	0.15%
2004	0.07%	0.39%	0.55%	0.60%	-1.01%	0.00%	5.34%	0.12%
2005	0.13%	0.00%	2.27%	-0.04%	0.00%	0.00%	-3.62%	0.11%
2006	0.07%	-1.02%	0.17%	-0.04%	0.00%	0.72%	-9.77%	0.04%
2007	0.04%	-0.35%	-0.62%	-0.12%	0.00%	0.71%	40.00%	0.04%
2008	-0.25%	5.08%		0.69%	-2.04%	10.28%	-3.57%	0.00%
2009	-0.23%	4.50%		0.87%	-1.04%	7.40%	-14.81%	0.01%
2010	0.13%	0.48%		0.51%	-2.11%	-0.30%	21.74%	0.17%
5 Yr. Avg.	-0.05%	1.64%	0.61%	0.27%	-0.62%	3.82%	1.65%	0.04%
10 Yr. Avg.	0.03%	0.82%	0.92%	0.30%	-0.50%	0.57%	-0.67%	0.07%
20 Yr. Avg.	0.12%	0.61%	0.97%	0.05%	-0.54%	0.54%	1.49%	0.12%

Five year average = 2005 through 2009.

Ten year average = 2000 through 2009.

Twenty year average = 1990 through 2009.

California Water Service Company - Mid-Peninsula District
Water Supply and Demand Analysis and Projections
Annual Services

Worksheet 1

Year	Residential	Multi-Residential	Multi-Res. units	Commercial	Industrial	Government	Other	Total	Annual Change
1970	27,098	0	0	3,395	113	219	23	30,848	
1975	27,837	469	9,216	3,193	114	266	11	31,890	195
1980	28,973	491	9,957	3,292	119	292	23	33,190	206
1981	29,191	495	10,109	3,299	117	294	25	33,421	231
1982	29,247	506	10,493	3,301	115	294	20	33,483	62
1983	29,339	510	10,684	3,314	115	297	21	33,596	113
1984	29,506	510	10,711	3,324	111	300	22	33,773	177
1985	29,644	524	10,852	3,336	111	301	23	33,939	166
1986	29,781	530	10,883	3,337	111	300	23	34,082	143
1987	29,960	535	11,207	3,336	111	303	28	34,273	191
1988	30,094	548	11,767	3,337	107	304	26	34,416	143
1989	30,249	556	12,631	3,331	106	306	25	34,573	157
1990	30,346	560	13,121	3,327	105	305	19	34,662	89
1991	30,420	564	13,035	3,315	104	302	23	34,728	66
1992	30,467	565	13,127	3,315	102	309	20	34,778	50
1993	30,494	571	13,294	3,304	100	309	15	34,793	15
1994	30,536	571	13,573	3,282	100	308	17	34,814	21
1995	30,608	573	13,750	3,276	101	310	17	34,885	71
1996	30,810	573	13,896	3,264	101	315	16	35,079	194
1997	30,845	574	13,864	3,271	100	319	20	35,129	50
1998	30,860	577	13,903	3,267	99	322	20	35,145	16
1999	30,897	579	13,945	3,267	100	322	29	35,194	49
2000	30,931	582	14,147	3,289	102	325	37	35,266	72
2001	30,943	583	14,518	3,289	102	327	34	35,278	12
2002	30,934	581	14,518	3,293	102	327	27	35,264	-13.6
2003	31,043	577	14,652	3,300	99	278	22	35,319	55
2004	31,065	579	14,733	3,320	98	278	23	35,362	43
2005	31,107	579	15,068	3,318	98	278	22	35,402	40
2006	31,128	573	15,094	3,317	98	280	20	35,416	14
2007	31,139	571	14,336	3,313	98	282	28	35,431	15
2008	31,060	600	14,057	3,336	96	311	27	35,430	-1
2009	30,988	627	14,017	3,365	95	334	23	35,432	2
2010	31,028	630	14,017	3,382	93	333	28	35,494	62
5 Yr Avg.	31,084	590	14,514	3,330	97	297	24	35,422	14
10 Yr Avg.	31,034	585	14,514	3,314	99	302	26	35,360	24
20 Yr Avg.	30,831	578	14,032	3,301	100	307	23	35,140	43

Five year average = 2005 through 2009.

Ten year average = 2000 through 2009.

Twenty year average = 1990 through 2009.

California Water Service Company - Mid-Peninsula District
Water Supply and Demand Analysis and Projections
Sales(ccf)

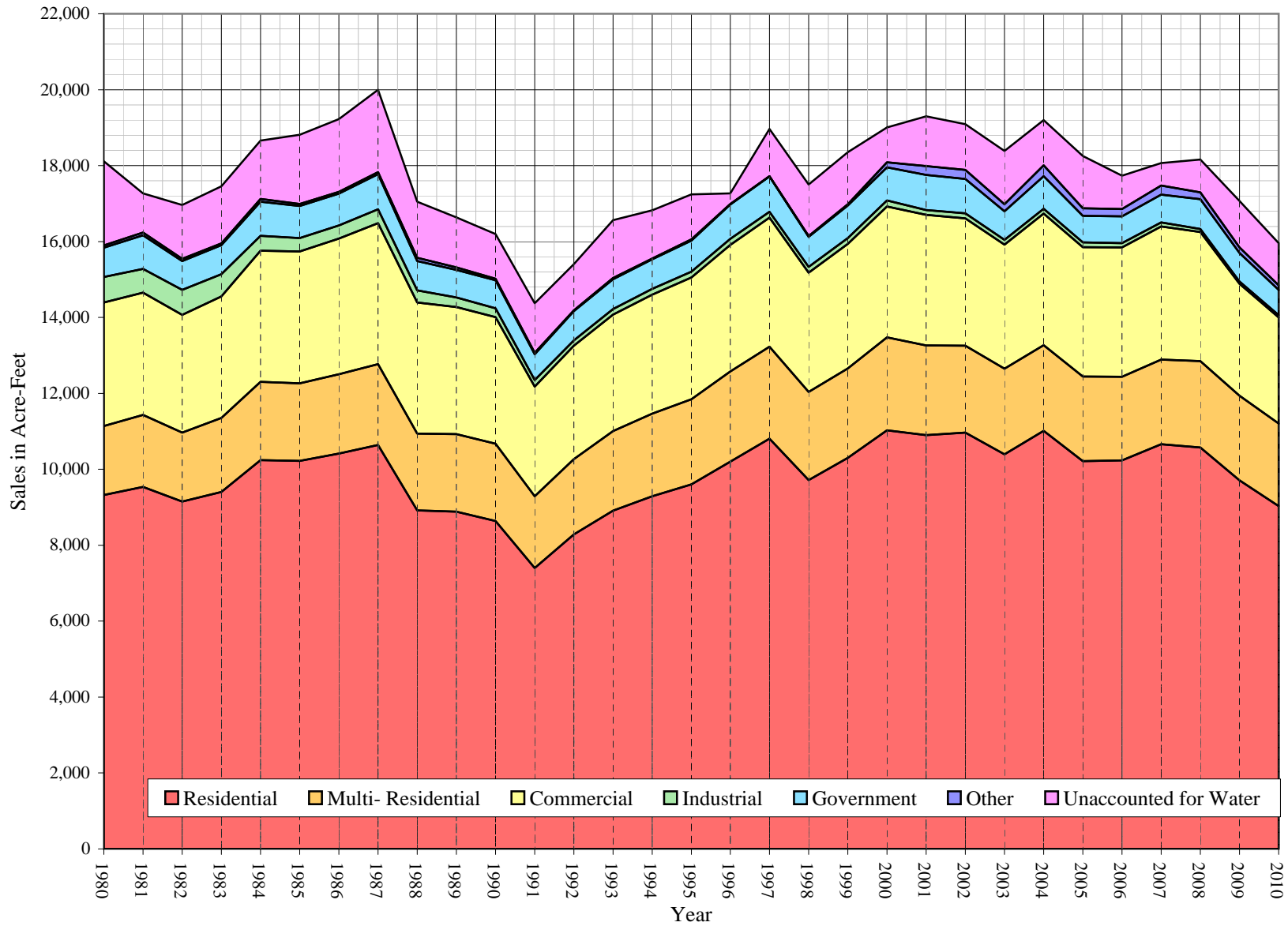
Worksheet 3

Year	Multi-						Unaccounted for Water	Total(ccf) Sales	Total(ccf) Demand	Total(kgal) Demand
	Residential	Residential	Commercial	Industrial	Government	Other				
1980	4,062,207	789,261	1,419,123	293,159	334,320	27,800	965,857	6,925,870	7,891,727	5,903,422
1981	4,152,661	826,881	1,402,194	275,024	385,506	31,961	446,683	7,074,227	7,520,910	5,626,032
1982	3,986,416	791,153	1,349,979	286,385	332,775	25,761	615,896	6,772,469	7,388,365	5,526,881
1983	4,096,000	848,650	1,394,260	255,586	334,442	18,612	654,499	6,947,550	7,602,049	5,686,728
1984	4,462,274	898,522	1,502,887	171,013	393,166	30,904	669,301	7,458,766	8,128,067	6,080,217
1985	4,452,839	890,174	1,513,023	154,466	367,190	24,178	793,929	7,401,870	8,195,799	6,130,884
1986	4,537,474	908,224	1,557,619	151,821	364,034	20,370	833,701	7,539,542	8,373,243	6,263,621
1987	4,636,445	926,436	1,617,683	159,236	402,183	23,160	946,008	7,765,143	8,711,151	6,516,394
1988	3,883,066	881,139	1,505,604	140,405	335,963	36,470	645,252	6,782,647	7,427,899	5,556,455
1989	3,868,842	890,364	1,457,326	112,146	314,444	30,696	574,381	6,673,818	7,248,199	5,422,030
1990	3,761,600	887,482	1,452,083	102,108	322,876	16,987	511,563	6,543,136	7,054,699	5,277,282
1991	3,224,526	822,381	1,256,791	77,479	294,345	16,471	570,018	5,691,993	6,262,011	4,684,310
1992	3,607,671	865,021	1,302,784	59,644	335,688	9,113	530,739	6,179,921	6,710,660	5,019,923
1993	3,880,192	914,872	1,336,780	63,964	340,368	14,769	663,849	6,550,945	7,214,794	5,397,041
1994	4,046,388	946,842	1,366,650	67,383	336,952	10,108	553,418	6,774,323	7,327,741	5,481,531
1995	4,182,940	977,688	1,395,784	68,604	355,999	13,421	515,410	6,994,436	7,509,846	5,617,755
1996	4,442,824	1,037,029	1,449,771	70,098	396,157	4,894	122,379	7,400,773	7,523,152	5,627,709
1997	4,707,471	1,056,362	1,478,969	68,726	405,406	3,116	541,730	7,720,050	8,261,780	6,180,241
1998	4,232,085	1,011,632	1,368,876	66,798	344,280	8,361	590,926	7,032,032	7,622,958	5,702,369
1999	4,487,971	1,026,501	1,427,847	66,446	375,700	12,643	597,351	7,397,108	7,994,459	5,980,271
2000	4,802,585	1,066,176	1,503,695	67,427	381,667	57,438	399,307	7,878,988	8,278,295	6,192,595
2001	4,749,157	1,027,824	1,500,027	53,771	403,506	100,476	572,195	7,834,761	8,406,956	6,288,840
2002	4,776,692	998,659	1,458,638	58,215	394,997	105,555	525,127	7,792,756	8,317,883	6,222,209
2003	4,528,479	982,561	1,423,996	54,110	328,496	80,643	609,458	7,398,285	8,007,743	5,990,208
2004	4,797,306	981,562	1,511,902	54,299	372,825	125,130	519,103	7,843,024	8,362,127	6,255,306
2005	4,450,668	971,348	1,483,978	54,889	302,255	88,035	600,030	7,351,173	7,951,203	5,947,913
2006	4,459,582	956,808	1,484,404	51,478	305,160	84,483	383,339	7,341,915	7,725,254	5,778,892
2007	4,645,037	971,063	1,527,229	44,552	320,675	102,793	258,923	7,611,349	7,870,272	5,887,373
2008	4,607,338	988,882	1,481,166	37,033	340,025	80,303	375,203	7,534,747	7,909,950	5,917,054
2009	4,227,834	973,851	1,282,487	27,278	326,809	63,581	532,893	6,901,840	7,434,733	5,561,567
2010	3,932,823	948,240	1,217,588	25,658	290,145	53,338	482,580	6,467,792	6,950,372	5,199,240
5 Yr. Avg.	4,478,092	972,390	1,451,853	43,046	318,985	83,839	430,078	7,348,205	7,778,283	5,818,560
10 Yr. Avg.	4,604,468	991,873	1,465,752	50,305	347,642	88,844	477,558	7,548,884	8,026,442	6,004,196

Five year average = 2005 through 2009.

Ten year average = 2000 through 2009.

Mid-Peninsula District Historical Sales



California Water Service Company - Mid-Peninsula District
Water Supply and Demand Analysis and Projections
Sales (AF)

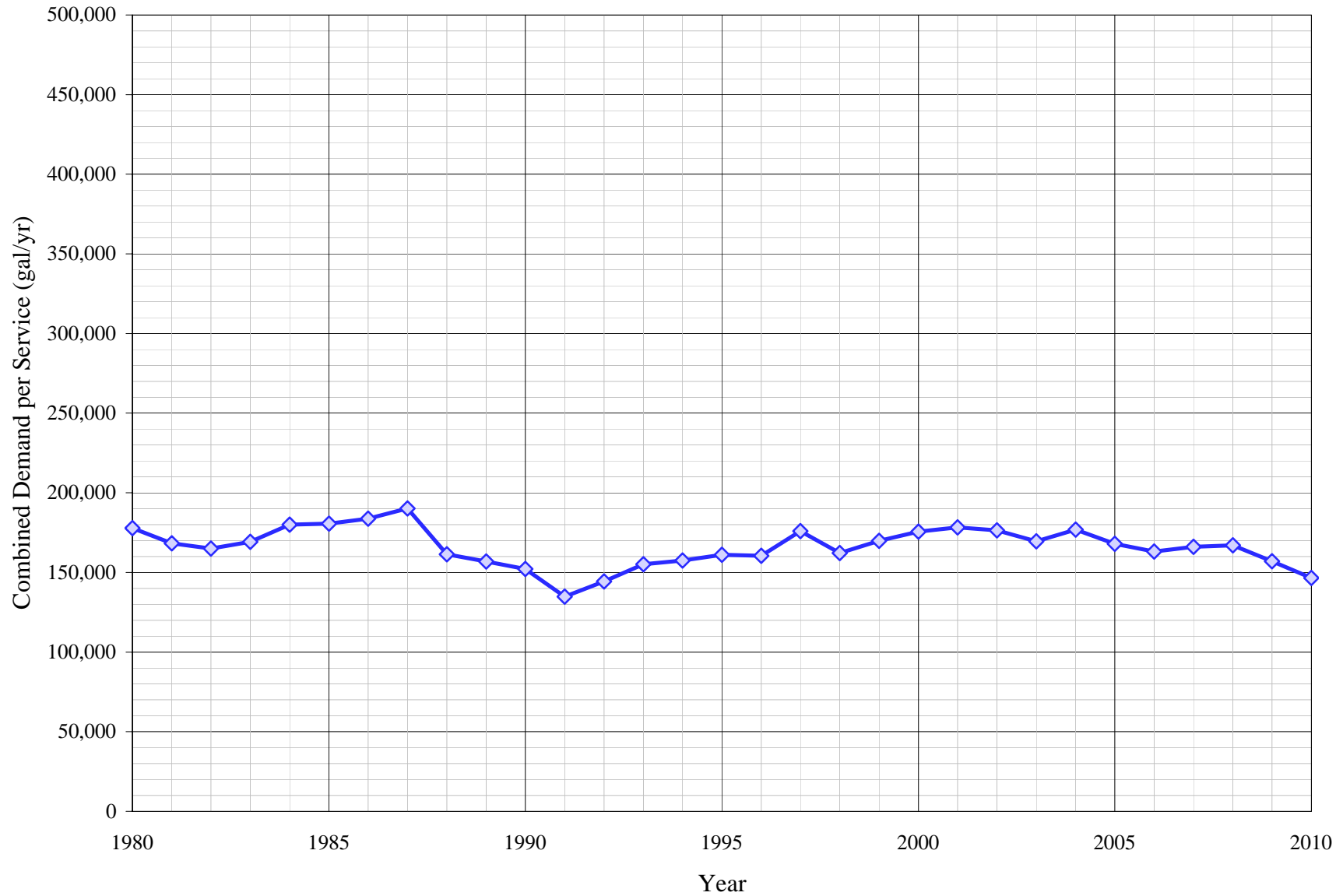
Worksheet 4

Year	Residential	Multi-Residential	Commercial	Industrial	Government	Other	Unaccounted for Water	Total(AF) Sales	Total(AF) Demand	Total(Mgal) Demand
1980	9,326	1,812	3,258	673	767	64	2,217	15,900	18,117	5,903
1981	9,533	1,898	3,219	631	885	73	1,025	16,240	17,266	5,626
1982	9,152	1,816	3,099	657	764	59	1,414	15,547	16,961	5,527
1983	9,403	1,948	3,201	587	768	43	1,503	15,949	17,452	5,687
1984	10,244	2,063	3,450	393	903	71	1,537	17,123	18,659	6,080
1985	10,222	2,044	3,473	355	843	56	1,823	16,992	18,815	6,131
1986	10,417	2,085	3,576	349	836	47	1,914	17,308	19,222	6,264
1987	10,644	2,127	3,714	366	923	53	2,172	17,826	19,998	6,516
1988	8,914	2,023	3,456	322	771	84	1,481	15,571	17,052	5,556
1989	8,882	2,044	3,346	257	722	70	1,319	15,321	16,640	5,422
1990	8,635	2,037	3,334	234	741	39	1,174	15,021	16,195	5,277
1991	7,402	1,888	2,885	178	676	38	1,309	13,067	14,376	4,684
1992	8,282	1,986	2,991	137	771	21	1,218	14,187	15,406	5,020
1993	8,908	2,100	3,069	147	781	34	1,524	15,039	16,563	5,397
1994	9,289	2,174	3,137	155	774	23	1,270	15,552	16,822	5,482
1995	9,603	2,244	3,204	157	817	31	1,183	16,057	17,240	5,618
1996	10,199	2,381	3,328	161	909	11	281	16,990	17,271	5,628
1997	10,807	2,425	3,395	158	931	7	1,244	17,723	18,966	6,180
1998	9,716	2,322	3,143	153	790	19	1,357	16,143	17,500	5,702
1999	10,303	2,357	3,278	153	862	29	1,371	16,981	18,353	5,980
2000	11,025	2,448	3,452	155	876	132	917	18,088	19,004	6,193
2001	10,903	2,360	3,444	123	926	231	1,314	17,986	19,300	6,289
2002	10,966	2,293	3,349	134	907	242	1,206	17,890	19,095	6,222
2003	10,396	2,256	3,269	124	754	185	1,399	16,984	18,383	5,990
2004	11,013	2,253	3,471	125	856	287	1,192	18,005	19,197	6,255
2005	10,217	2,230	3,407	126	694	202	1,377	16,876	18,253	5,948
2006	10,238	2,197	3,408	118	701	194	880	16,855	17,735	5,779
2007	10,664	2,229	3,506	102	736	236	594	17,473	18,068	5,887
2008	10,577	2,270	3,400	85	781	184	861	17,297	18,159	5,917
2009	9,706	2,236	2,944	63	750	146	1,223	15,844	17,068	5,562
2010	9,029	2,177	2,795	59	666	122	1,108	14,848	15,956	5,199
5 Yr. Avg.	10,280	2,232	3,333	99	732	192	987	16,869	17,856	5,819
10 Yr. Avg.	10,570	2,277	3,365	115	798	204	1,096	17,330	18,426	6,004

Five year average = 2005 through 2009.

Ten year average = 2000 through 2009.

Mid-Peninsula District Historical Demand per Service



California Water Service Company - Mid-Peninsula District
Water Supply and Demand Analysis and Projections
Demand per Service(gal/yr)

Worksheet 5

Year	Multi-Residential			Commercial	Industrial	Government	Total Other	Unaccounted/ Total Services	Combined Demand/Serv
	Residential	(service)	(unit)						
1980	104,882	1,202,461	59,296	322,472	1,842,842	856,468	904,167	21,769	177,867
1981	106,417	1,249,596	61,188	317,949	1,758,395	980,879	956,340	9,998	168,338
1982	101,961	1,169,612	56,402	305,924	1,862,877	846,711	963,528	13,760	165,065
1983	104,435	1,244,773	59,419	314,719	1,662,536	842,357	662,988	14,573	169,268
1984	113,130	1,317,924	62,752	338,218	1,152,492	980,362	1,050,809	14,825	180,032
1985	112,365	1,270,795	61,362	339,275	1,040,978	912,549	786,365	17,499	180,644
1986	113,974	1,281,884	62,428	349,170	1,023,153	907,721	662,514	18,299	183,781
1987	115,764	1,295,369	61,838	362,743	1,073,124	992,917	618,746	20,648	190,132
1988	96,522	1,202,806	56,016	337,510	981,591	826,703	1,049,287	14,025	161,450
1989	95,676	1,197,911	52,730	327,276	791,425	768,694	918,488	12,428	156,828
1990	92,726	1,185,505	50,597	326,490	727,449	791,895	668,798	11,040	152,250
1991	79,294	1,090,751	47,195	283,603	557,292	729,091	535,703	12,278	134,886
1992	88,579	1,145,276	49,294	293,982	437,420	812,660	340,850	11,416	144,342
1993	95,185	1,198,550	51,480	302,658	478,484	823,990	736,532	14,273	155,119
1994	99,126	1,240,433	52,184	311,495	504,060	818,369	444,783	11,891	157,452
1995	102,230	1,276,373	53,190	318,718	508,112	859,051	590,565	11,052	161,036
1996	107,870	1,353,842	55,826	332,262	519,178	940,781	228,810	2,610	160,430
1997	114,165	1,376,679	56,998	338,229	514,106	950,673	116,547	11,536	175,930
1998	102,587	1,311,531	54,431	313,434	504,731	799,812	312,723	12,578	162,253
1999	108,659	1,326,211	55,065	326,937	497,051	872,805	326,125	12,697	169,923
2000	116,148	1,370,370	56,376	342,001	494,499	878,482	1,161,260	8,470	175,597
2001	114,812	1,318,809	52,959	341,167	394,348	923,069	2,210,626	12,133	178,265
2002	115,511	1,285,798	51,457	331,350	426,940	903,603	2,880,023	11,139	176,444
2003	109,123	1,274,578	50,164	322,795	408,860	883,928	2,762,984	12,908	169,603
2004	115,521	1,268,334	49,838	340,691	414,474	1,003,210	4,069,728	10,981	176,891
2005	107,030	1,255,135	48,222	334,533	418,978	813,318	2,970,891	12,679	168,011
2006	107,170	1,249,114	47,419	334,764	392,941	815,270	3,159,884	8,097	163,172
2007	111,588	1,272,164	48,427	344,838	340,074	850,644	2,746,232	5,467	166,164
2008	110,964	1,232,892		332,131	288,569	817,866	2,224,845	7,922	167,007
2009	102,060	1,161,868	52,327	285,102	214,793	731,946	2,067,908	11,251	156,965
2010	94,816	1,125,925		269,314	206,382	651,782	1,424,986	10,171	146,482
5 Yr. Avg.	107,762	1,234,235	49,099	326,273	331,071	805,809	2,633,952	9,083	164,264
10 Yr. Avg.	110,993	1,268,906	50,799	330,937	379,448	862,134	2,625,438	10,105	169,812

Five year average is from years 2005 through 2009.

Ten year average is from years 2000 through 2009.

California Water Service Company - Mid-Peninsula District
Water Supply and Demand Analysis and Projections
Demand per Service(gal/day)

Worksheet 6

Year	Multi-Residential			Commercial	Industrial	Government	Total Other	Unaccounted/ Total Services	Combined Demand/Service
	Residential	(service)	(unit)						
1980	287	3,294	162	883	5,049	2,346	2,477	60	487
1981	292	3,424	168	871	4,818	2,687	2,620	27	461
1982	279	3,204	155	838	5,104	2,320	2,640	38	452
1983	286	3,410	163	862	4,555	2,308	1,816	40	464
1984	310	3,611	172	927	3,158	2,686	2,879	41	493
1985	308	3,482	168	930	2,852	2,500	2,154	48	495
1986	312	3,512	171	957	2,803	2,487	1,815	50	504
1987	317	3,549	169	994	2,940	2,720	1,695	57	521
1988	264	3,295	153	925	2,689	2,265	2,875	38	442
1989	262	3,282	144	897	2,168	2,106	2,516	34	430
1990	254	3,248	139	894	1,993	2,170	1,832	30	417
1991	217	2,988	129	777	1,527	1,998	1,468	34	370
1992	243	3,138	135	805	1,198	2,226	934	31	395
1993	261	3,284	141	829	1,311	2,258	2,018	39	425
1994	272	3,398	143	853	1,381	2,242	1,219	33	431
1995	280	3,497	146	873	1,392	2,354	1,618	30	441
1996	296	3,709	153	910	1,422	2,577	627	7	440
1997	313	3,772	156	927	1,409	2,605	319	32	482
1998	281	3,593	149	859	1,383	2,191	857	34	445
1999	298	3,633	151	896	1,362	2,391	893	35	466
2000	318	3,754	154	937	1,355	2,407	3,182	23	481
2001	315	3,613	145	935	1,080	2,529	6,057	33	488
2002	316	3,523	141	908	1,170	2,476	7,890	31	483
2003	299	3,492	137	884	1,120	2,422	7,570	35	465
2004	316	3,475	137	933	1,136	2,749	11,150	30	485
2005	293	3,439	132	917	1,148	2,228	8,139	35	460
2006	294	3,422	130	917	1,077	2,234	8,657	22	447
2007	306	3,485	133	945	932	2,331	7,524	15	455
2008	304	3,378		910	791	2,241	6,095	22	458
2009	280	3,183	143	781	588	2,005	5,666	31	430
2010	260	3,085		738	565	1,786	3,904	28	401
5 Yr. Avg.	295	3,381	135	894	907	2,208	7,216	25	450
10 Yr. Avg.	304	3,476	139	907	1,040	2,362	7,193	28	465

Five year average is from years 2005 through 2009.

Ten year average is from years 2000 through 2009.

California Water Service Company - Mid-Peninsula District
Water Supply and Demand Analysis and Projections
Percentage Change in Annual Demand

Worksheet 7

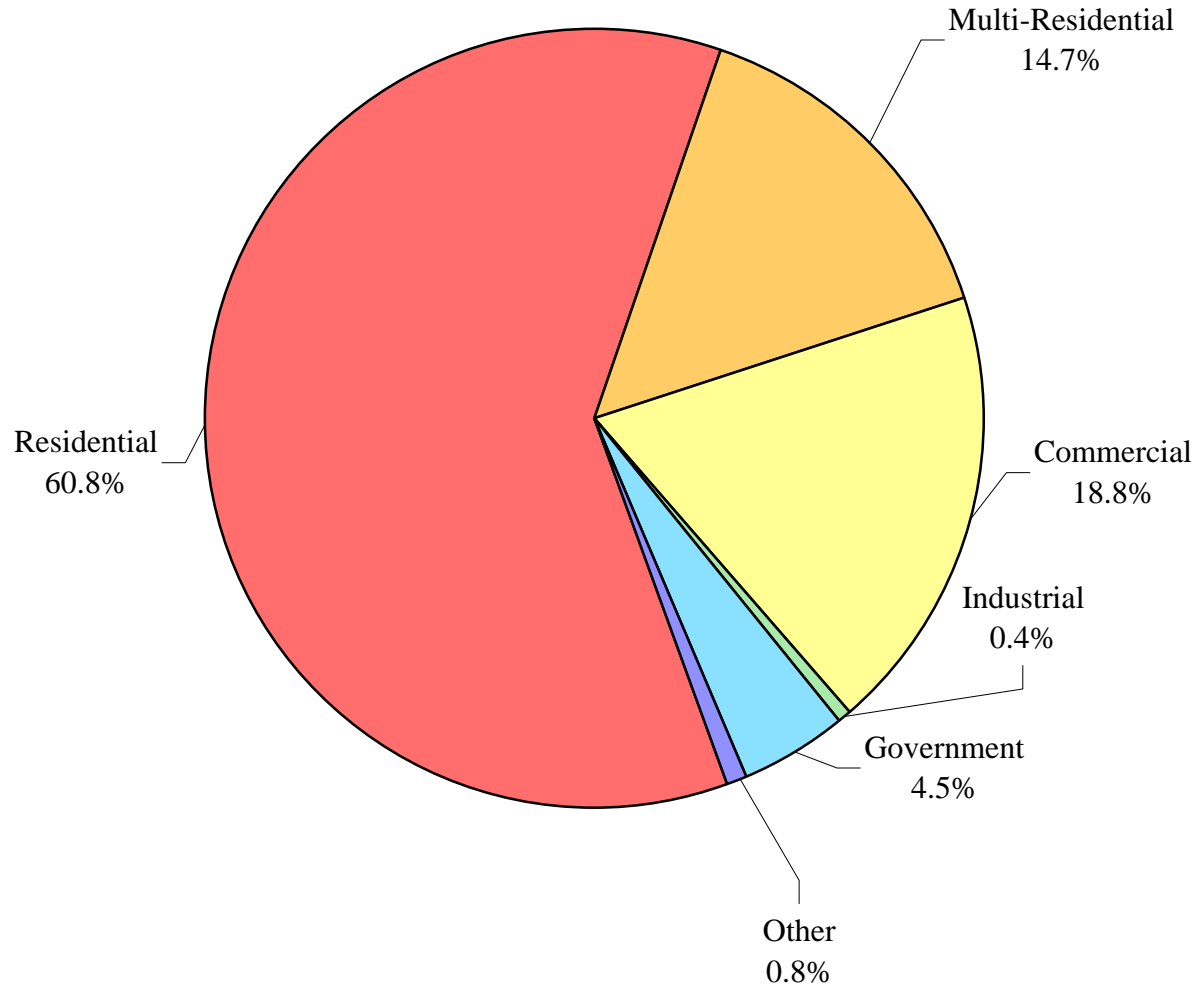
Year	Multi-Residential		Commercial	Industrial	Government	Other	Unaccounted Water	Total
	Residential	Residential						
1981	2.23%	4.77%	-1.19%	-6.19%	15.31%	14.97%	-53.75%	-4.70%
1982	-4.00%	-4.32%	-3.72%	4.13%	-13.68%	-19.40%	37.88%	-1.76%
1983	2.75%	7.27%	3.28%	-10.75%	0.50%	-27.75%	6.27%	2.89%
1984	8.94%	5.88%	7.79%	-33.09%	17.56%	66.04%	2.26%	6.92%
1985	-0.21%	-0.93%	0.67%	-9.68%	-6.61%	-21.76%	18.62%	0.83%
1986	1.90%	2.03%	2.95%	-1.71%	-0.86%	-15.75%	5.01%	2.17%
1987	2.18%	2.01%	3.86%	4.88%	10.48%	13.70%	13.47%	4.04%
1988	-16.25%	-4.89%	-6.93%	-11.83%	-16.47%	57.47%	-31.79%	-14.73%
1989	-0.37%	1.05%	-3.21%	-20.13%	-6.41%	-15.83%	-10.98%	-2.42%
1990	-2.77%	-0.32%	-0.36%	-8.95%	2.68%	-44.66%	-10.94%	-2.67%
1991	-14.28%	-7.34%	-13.45%	-24.12%	-8.84%	-3.04%	11.43%	-11.24%
1992	11.88%	5.18%	3.66%	-23.02%	14.05%	-44.67%	-6.89%	7.16%
1993	7.55%	5.76%	2.61%	7.24%	1.39%	62.07%	25.08%	7.51%
1994	4.28%	3.49%	2.23%	5.35%	-1.00%	-31.56%	-16.64%	1.57%
1995	3.37%	3.26%	2.13%	1.81%	5.65%	32.78%	-6.87%	2.49%
1996	6.21%	6.07%	3.87%	2.18%	11.28%	-63.53%	-76.26%	0.18%
1997	5.96%	1.86%	2.01%	-1.96%	2.33%	-36.33%	342.67%	9.82%
1998	-10.10%	-4.23%	-7.44%	-2.81%	-15.08%	168.32%	9.08%	-7.73%
1999	6.05%	1.47%	4.31%	-0.53%	9.13%	51.21%	1.09%	4.87%
2000	7.01%	3.87%	5.31%	1.48%	1.59%	354.31%	-33.15%	3.55%
2001	-1.11%	-3.60%	-0.24%	-20.25%	5.72%	74.93%	43.30%	1.55%
2002	0.58%	-2.84%	-2.76%	8.26%	-2.11%	5.05%	-8.23%	-1.06%
2003	-5.20%	-1.61%	-2.37%	-7.05%	-16.84%	-23.60%	16.06%	-3.73%
2004	5.94%	-0.10%	6.17%	0.35%	13.49%	55.17%	-14.83%	4.43%
2005	-7.23%	-1.04%	-1.85%	1.09%	-18.93%	-29.65%	15.59%	-4.91%
2006	0.20%	-1.50%	0.03%	-6.21%	0.96%	-4.03%	-36.11%	-2.84%
2007	4.16%	1.49%	2.88%	-13.45%	5.08%	21.67%	-32.46%	1.88%
2008	-0.81%	1.83%	-3.02%	-16.88%	6.03%	-21.88%	44.91%	0.50%
2009	-8.24%	-1.52%	-13.41%	-26.34%	-3.89%	-20.82%	42.03%	-6.01%
2010	-6.98%	-2.63%	-5.06%	-5.94%	-11.22%	-16.11%	-9.44%	-6.51%
5 Yr. Avg.	-2.38%	-0.15%	-3.07%	-12.36%	-2.15%	-10.94%	6.79%	-2.28%
10 Yr. Avg.	-0.47%	-0.50%	-0.93%	-7.90%	-0.89%	41.12%	3.71%	-0.66%

Five year average is from years 2005 through 2009.

Ten year average is from years 2000 through 2009.

Mid-Peninsula District

Percent of Total Sales by Type of Use (2010)



California Water Service Company - Mid-Peninsula District
Water Supply and Demand Analysis and Projections

Percentage of Total Sales

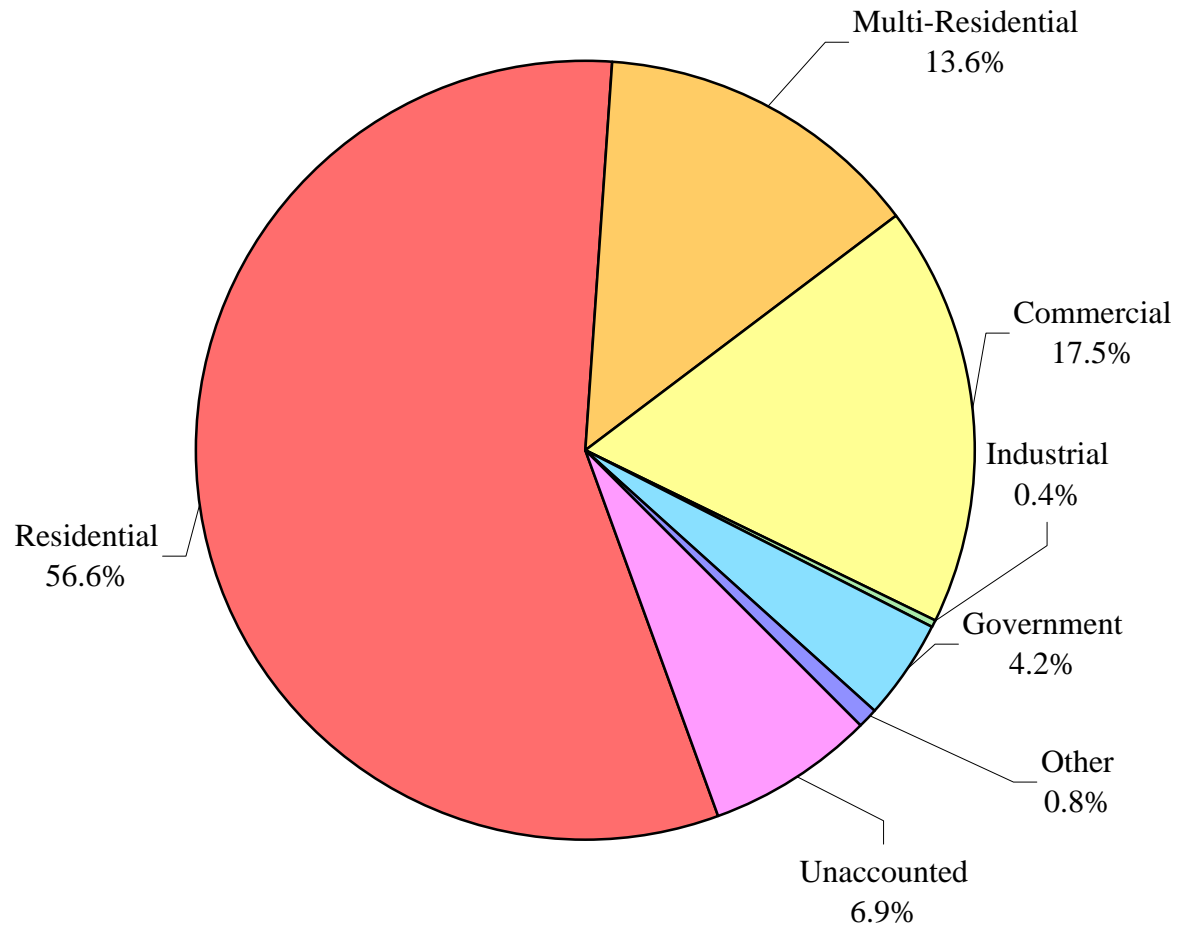
Year	Residential	Multi-Residential	Commercial	Industrial	Government	Other	Percent Total
1981	58.7%	11.7%	19.8%	3.9%	5.4%	0.5%	100.0%
1982	58.9%	11.7%	19.9%	4.2%	4.9%	0.4%	100.0%
1983	59.0%	12.2%	20.1%	3.7%	4.8%	0.3%	100.0%
1984	59.8%	12.0%	20.1%	2.3%	5.3%	0.4%	100.0%
1985	60.2%	12.0%	20.4%	2.1%	5.0%	0.3%	100.0%
1986	60.2%	12.0%	20.7%	2.0%	4.8%	0.3%	100.0%
1987	59.7%	11.9%	20.8%	2.1%	5.2%	0.3%	100.0%
1988	57.3%	13.0%	22.2%	2.1%	5.0%	0.5%	100.0%
1989	58.0%	13.3%	21.8%	1.7%	4.7%	0.5%	100.0%
1990	57.5%	13.6%	22.2%	1.6%	4.9%	0.3%	100.0%
1991	56.7%	14.4%	22.1%	1.4%	5.2%	0.3%	100.0%
1992	58.4%	14.0%	21.1%	1.0%	5.4%	0.1%	100.0%
1993	59.2%	14.0%	20.4%	1.0%	5.2%	0.2%	100.0%
1994	59.7%	14.0%	20.2%	1.0%	5.0%	0.1%	100.0%
1995	59.8%	14.0%	20.0%	1.0%	5.1%	0.2%	100.0%
1996	60.0%	14.0%	19.6%	0.9%	5.4%	0.1%	100.0%
1997	61.0%	13.7%	19.2%	0.9%	5.3%	0.0%	100.0%
1998	60.2%	14.4%	19.5%	0.9%	4.9%	0.1%	100.0%
1999	60.7%	13.9%	19.3%	0.9%	5.1%	0.2%	100.0%
2000	61.0%	13.5%	19.1%	0.9%	4.8%	0.7%	100.0%
2001	60.6%	13.1%	19.1%	0.7%	5.2%	1.3%	100.0%
2002	61.3%	12.8%	18.7%	0.7%	5.1%	1.4%	100.0%
2003	61.2%	13.3%	19.2%	0.7%	4.4%	1.1%	100.0%
2004	61.2%	12.5%	19.3%	0.7%	4.8%	1.6%	100.0%
2005	60.5%	13.2%	20.2%	0.7%	4.1%	1.2%	100.0%
2006	60.7%	13.0%	20.2%	0.7%	4.2%	1.2%	100.0%
2007	61.0%	12.8%	20.1%	0.6%	4.2%	1.4%	100.0%
2008	61.1%	13.1%	19.7%	0.5%	4.5%	1.1%	100.0%
2009	61.3%	14.1%	18.6%	0.4%	4.7%	0.9%	100.0%
2010	60.8%	14.7%	18.8%	0.4%	4.5%	0.8%	100.0%
5 Yr. Avg.	60.94%	13.25%	19.74%	0.58%	4.35%	1.14%	100.00%
10 Yr. Avg.	61.00%	13.15%	19.42%	0.66%	4.60%	1.17%	100.00%

Five year average is from years 2005 through 2009.

Ten year average is from years 2000 through 2009.

Mid-Peninsula District

Percent of Total Demand by Type of Use (2010)



California Water Service Company - Mid-Peninsula District
Water Supply and Demand Analysis and Projections
Percentage of Total Demand

Year	Residential	Multi-Residential	Commercial	Industrial	Government	Other	Unaccounted	Percent Total
1980	51.5%	10.0%	18.0%	3.7%	4.2%	0.4%	12.2%	100.0%
1981	55.2%	11.0%	18.6%	3.7%	5.1%	0.4%	5.9%	100.0%
1982	54.0%	10.7%	18.3%	3.9%	4.5%	0.3%	8.3%	100.0%
1983	53.9%	11.2%	18.3%	3.4%	4.4%	0.2%	8.6%	100.0%
1984	54.9%	11.1%	18.5%	2.1%	4.8%	0.4%	8.2%	100.0%
1985	54.3%	10.9%	18.5%	1.9%	4.5%	0.3%	9.7%	100.0%
1986	54.2%	10.8%	18.6%	1.8%	4.3%	0.2%	10.0%	100.0%
1987	53.2%	10.6%	18.6%	1.8%	4.6%	0.3%	10.9%	100.0%
1988	52.3%	11.9%	20.3%	1.9%	4.5%	0.5%	8.7%	100.0%
1989	53.4%	12.3%	20.1%	1.5%	4.3%	0.4%	7.9%	100.0%
1990	53.3%	12.6%	20.6%	1.4%	4.6%	0.2%	7.3%	100.0%
1991	51.5%	13.1%	20.1%	1.2%	4.7%	0.3%	9.1%	100.0%
1992	53.8%	12.9%	19.4%	0.9%	5.0%	0.1%	7.9%	100.0%
1993	53.8%	12.7%	18.5%	0.9%	4.7%	0.2%	9.2%	100.0%
1994	55.2%	12.9%	18.7%	0.9%	4.6%	0.1%	7.6%	100.0%
1995	55.7%	13.0%	18.6%	0.9%	4.7%	0.2%	6.9%	100.0%
1996	59.1%	13.8%	19.3%	0.9%	5.3%	0.1%	1.6%	100.0%
1997	57.0%	12.8%	17.9%	0.8%	4.9%	0.0%	6.6%	100.0%
1998	55.5%	13.3%	18.0%	0.9%	4.5%	0.1%	7.8%	100.0%
1999	56.1%	12.8%	17.9%	0.8%	4.7%	0.2%	7.5%	100.0%
2000	58.0%	12.9%	18.2%	0.8%	4.6%	0.7%	4.8%	100.0%
2001	56.5%	12.2%	17.8%	0.6%	4.8%	1.2%	6.8%	100.0%
2002	57.4%	12.0%	17.5%	0.7%	4.7%	1.3%	6.3%	100.0%
2003	56.6%	12.3%	17.8%	0.7%	4.1%	1.0%	7.6%	100.0%
2004	57.4%	11.7%	18.1%	0.6%	4.5%	1.5%	6.2%	100.0%
2005	56.0%	12.2%	18.7%	0.7%	3.8%	1.1%	7.5%	100.0%
2006	57.7%	12.4%	19.2%	0.7%	4.0%	1.1%	5.0%	100.0%
2007	59.0%	12.3%	19.4%	0.6%	4.1%	1.3%	3.3%	100.0%
2008	58.2%	12.5%	18.7%	0.5%	4.3%	1.0%	4.7%	100.0%
2009	56.9%	13.1%	17.2%	0.4%	4.4%	0.9%	7.2%	100.0%
2010	56.6%	13.6%	17.5%	0.4%	4.2%	0.8%	6.9%	100.0%
5 Yr. Avg.	57.57%	12.51%	18.65%	0.55%	4.10%	1.08%	5.54%	100.00%
10 Yr. Avg.	57.37%	12.37%	18.27%	0.62%	4.32%	1.10%	5.95%	100.00%

Five year average is from years 2005 through 2009.

Ten year average is from years 2000 through 2009.

California Water Service Company - Mid-Peninsula District

Water Supply and Demand Analysis and Projections

Worksheet 10

Scenario #1: Based on Maintaining Growth at the 10-Year 5-Year Average Annual Growth and Low Average High Demand per Service for each Customer Class.

Summary of Historical Growth Rate from Worksheet 2			
Customer Type	10 Yr. Avg. Historical Growth Rate	Individual Growth Rate Selected	Notes
Single Family Residential	0.030%	0.030%	Historical growth rate used
Multi Family Residential	0.820%	0.820%	Historical growth rate used
Commercial	0.296%	0.296%	Historical growth rate used
Industrial	-0.503%	0.066%	Overall growth rate used
Government	0.568%	0.568%	Historical growth rate used
Other	-0.667%	0.066%	Overall growth rate used
Overall	0.066%	0.075%	

Summary of Lowest Demand per Service from Worksheets 5 and 6									
Demand/Serv. Units	Multi-Residential			Commercial	Industrial	Government	Total Other	Unaccounted Total Serv.	Combined Demand/Serv.
	Residential	(service)	(unit)						
Gal/Service/Yr	79,294	1,090,751	47,195	283,603	557,292	729,091	535,703	2,610	134,886
AF/Service/Yr	0.243	3.347	0.145	0.870	1.710	2.237	1.644	0.008	0.414
Gal/Service/Day	217	2,988	129	777	1,527	1,998	1,468	7	370

California Water Service Company - Mid-Peninsula District

Water Supply and Demand Analysis and Projections

Worksheet 10

30-year projection Summary

Scenario #1: Based on Maintaining Growth at the 10-Year Average Annual Growth and Low Demand per Service for each Customer Class.
 5-Year Average High

Customer Type	Projected Services 2010	Projected Services 2015	Projected Services 2020	Projected Services 2025	Projected Services 2030	Projected Services 2035	Projected Services 2040	Services projected to be added from 2010 - 2040
Single Family Residential	30,997	31,044	31,090	31,137	31,184	31,231	31,277	280
Multi Family Residential	632	658	686	715	744	775	808	175
Commercial	3,375	3,425	3,476	3,528	3,580	3,634	3,688	313
Industrial	95	96	96	96	97	97	98	3
Government	336	345	355	364	374	384	395	59
Other	23	23	23	23	23	24	24	1
Total	35,458	35,591	35,726	35,863	36,003	36,144	36,289	831

Customer Type	Projected Demand 2010 (ccf)	Projected Demand 2015 (ccf)	Projected Demand 2020 (ccf)	Projected Demand 2025 (ccf)	Projected Demand 2030 (ccf)	Projected Demand 2035 (ccf)	Projected Demand 2040 (ccf)	Projected demand to be added from 2010 - 2040 (ccf)
Single Family Residential	3,285,706	3,290,638	3,295,577	3,300,523	3,305,477	3,310,438	3,315,406	29,700
Multi Family Residential	921,736	960,152	1,000,169	1,041,854	1,085,276	1,130,508	1,177,626	255,890
Commercial	1,279,518	1,298,567	1,317,900	1,337,521	1,357,434	1,377,643	1,398,153	118,635
Industrial	70,821	71,218	71,453	71,854	72,091	72,496	72,736	1,915
Government	327,382	335,875	345,522	354,486	364,668	374,129	384,875	57,494
Other	16,482	16,574	16,629	16,722	16,778	16,872	16,927	446
Unaccounted	123,702	124,164	124,636	125,114	125,602	126,096	126,600	2,898
Total	6,025,346	6,097,188	6,171,887	6,248,074	6,327,326	6,408,181	6,492,324	466,978

Customer Type	Projected Demand 2010 (AF)	Projected Demand 2015 (AF)	Projected Demand 2020 (AF)	Projected Demand 2025 (AF)	Projected Demand 2030 (AF)	Projected Demand 2035 (AF)	Projected Demand 2040 (AF)	Projected demand to be added from 2010 - 2040 (AF)
Single Family Residential	7,543	7,554	7,566	7,577	7,588	7,600	7,611	68
Multi Family Residential	2,116	2,204	2,296	2,392	2,491	2,595	2,703	587
Commercial	2,937	2,981	3,026	3,071	3,116	3,163	3,210	272
Industrial	163	163	164	165	166	166	167	4
Government	752	771	793	814	837	859	884	132
Other	38	38	38	38	39	39	39	1
Unaccounted	284	285	286	287	288	289	291	7
Total	13,832	13,997	14,169	14,344	14,526	14,711	14,904	1,072

California Water Service Company - Mid-Peninsula District
Water Supply and Demand Analysis and Projections

2000's Projections

Scenario #1: Based on Maintaining Growth at the 10-Year Average Annual Growth and Low Demand per Service for each Customer Class.
 5-Year Average High

Customer Type	Actual Services 2001	Actual Services 2002	Actual Services 2003	Actual Services 2004	Actual Services 2005	Actual Services 2006	Actual Services 2007	Actual Services 2008	Actual Services 2009	Projected Services 2010
Resident	30,943	30,934	31,043	31,065	31,107	31,128	31,139	31,060	30,988	30,997
Multi- Residential	583	581	577	579	579	573	571	600	627	632
Commercial	3,289	3,293	3,300	3,320	3,318	3,317	3,313	3,336	3,365	3,375
Industrial	102	102	99	98	98	98	98	96	95	95
Government	327	327	278	278	278	280	282	311	334	336
Other	34	27	22	23	22	20	28	27	23	23
Total	35,278	35,264	35,319	35,362	35,402	35,416	35,431	35,430	35,432	35,458

Customer Type	Demand 2001(ccf)	Demand 2002(ccf)	Demand 2003(ccf)	Demand 2004(ccf)	Demand 2005(ccf)	Demand 2006(ccf)	Demand 2007(ccf)	Demand 2008(ccf)	Demand 2009(ccf)	Demand 2010(ccf)
Resident	3,279,951	3,278,997	3,290,595	3,292,865	3,297,290	3,299,561	3,300,727	3,292,353	3,284,721	3,285,706
Multi- Residential	850,082	847,166	840,847	844,128	844,128	835,501	832,584	874,870	914,239	921,736
Commercial	1,246,929	1,248,445	1,251,099	1,258,555	1,258,050	1,257,544	1,256,028	1,264,747	1,275,742	1,279,518
Industrial	75,989	75,989	73,754	73,009	73,009	73,009	73,009	71,519	70,774	70,821
Government	318,710	318,710	270,952	270,952	270,952	272,902	274,851	303,116	325,533	327,382
Other	24,348	19,634	15,635	16,471	15,874	14,323	20,052	19,335	16,471	16,482
Unaccounted	123,073	123,025	123,216	123,367	123,505	123,554	123,607	123,603	123,610	123,702
Total	5,919,081	5,911,966	5,866,098	5,879,347	5,882,809	5,876,393	5,880,857	5,949,543	6,011,089	6,025,346

Customer Type	Demand 2001(AF)	Demand 2002(AF)	Demand 2003(AF)	Demand 2004(AF)	Demand 2005(AF)	Demand 2006(AF)	Demand 2007(AF)	Demand 2008(AF)	Demand 2009(AF)	Demand 2010(AF)
Resident	7,530	7,528	7,554	7,559	7,570	7,575	7,577	7,558	7,541	7,543
Multi- Residential	1,952	1,945	1,930	1,938	1,938	1,918	1,911	2,008	2,099	2,116
Commercial	2,863	2,866	2,872	2,889	2,888	2,887	2,883	2,903	2,929	2,937
Industrial	174	174	169	168	168	168	168	164	162	163
Government	732	732	622	622	622	627	631	696	747	752
Other	56	45	36	38	36	33	46	44	38	38
Unaccounted	283	282	283	283	284	284	284	284	284	284
Total	13,588	13,572	13,467	13,497	13,505	13,490	13,501	13,658	13,800	13,832

California Water Service Company - Mid-Peninsula District
Water Supply and Demand Analysis and Projections

2010's Projections

Scenario #1: Based on Maintaining Growth at the 10-Year 5-Year Average Annual Growth and Low Average High Demand per Service for each Customer Class.

Customer Type	Projected Services 2011	Projected Services 2012	Projected Services 2013	Projected Services 2014	Projected Services 2015	Projected Services 2016	Projected Services 2017	Projected Services 2018	Projected Services 2019	Projected Services 2020
Resident	31,007	31,016	31,025	31,035	31,044	31,053	31,062	31,072	31,081	31,090
Multi- Residential	637	643	648	653	658	664	669	675	680	686
Commercial	3,385	3,395	3,405	3,415	3,425	3,435	3,446	3,456	3,466	3,476
Industrial	95	95	95	96	96	96	96	96	96	96
Government	337	339	341	343	345	347	349	351	353	355
Other	23	23	23	23	23	23	23	23	23	23
Total	35,484	35,511	35,537	35,564	35,591	35,618	35,645	35,672	35,699	35,726

Customer Type	Demand 2011(ccf)	Demand 2012(ccf)	Demand 2013(ccf)	Demand 2014(ccf)	Demand 2015(ccf)	Demand 2016(ccf)	Demand 2017(ccf)	Demand 2018(ccf)	Demand 2019(ccf)	Demand 2020(ccf)
Resident	3,286,692	3,287,678	3,288,664	3,289,651	3,290,638	3,291,625	3,292,612	3,293,600	3,294,588	3,295,577
Multi- Residential	929,294	936,914	944,597	952,343	960,152	968,025	975,963	983,966	992,034	1,000,169
Commercial	1,283,305	1,287,104	1,290,914	1,294,735	1,298,567	1,302,411	1,306,266	1,310,133	1,314,011	1,317,900
Industrial	71,030	71,077	71,124	71,171	71,218	71,265	71,312	71,359	71,406	71,453
Government	328,351	330,216	332,091	333,978	335,875	337,782	339,701	341,630	343,571	345,522
Other	16,531	16,541	16,552	16,563	16,574	16,585	16,596	16,607	16,618	16,629
Unaccounted	123,792	123,885	123,978	124,071	124,164	124,258	124,352	124,447	124,541	124,636
Total	6,038,995	6,053,415	6,067,920	6,082,511	6,097,188	6,111,952	6,126,803	6,141,742	6,156,770	6,171,887

Customer Type	Demand 2011(AF)	Demand 2012(AF)	Demand 2013(AF)	Demand 2014(AF)	Demand 2015(AF)	Demand 2016(AF)	Demand 2017(AF)	Demand 2018(AF)	Demand 2019(AF)	Demand 2020(AF)
Resident	7,545	7,548	7,550	7,552	7,554	7,557	7,559	7,561	7,563	7,566
Multi- Residential	2,133	2,151	2,169	2,186	2,204	2,222	2,241	2,259	2,277	2,296
Commercial	2,946	2,955	2,964	2,972	2,981	2,990	2,999	3,008	3,017	3,026
Industrial	163	163	163	163	163	164	164	164	164	164
Government	754	758	762	767	771	775	780	784	789	793
Other	38	38	38	38	38	38	38	38	38	38
Unaccounted	284	284	285	285	285	285	285	286	286	286
Total	13,864	13,897	13,930	13,964	13,997	14,031	14,065	14,100	14,134	14,169

California Water Service Company - Mid-Peninsula District

Water Supply and Demand Analysis and Projections

2020's Projections

Scenario #1: Based on Maintaining Growth at the 10-Year 5-Year Average Annual Growth and Low Average High Demand per Service for each Customer Class.

Customer Type	Projected Services 2021	Projected Services 2022	Projected Services 2023	Projected Services 2024	Projected Services 2025	Projected Services 2026	Projected Services 2027	Projected Services 2028	Projected Services 2029	Projected Services 2030
Resident	31,100	31,109	31,118	31,128	31,137	31,146	31,156	31,165	31,174	31,184
Multi- Residential	692	697	703	709	715	720	726	732	738	744
Commercial	3,486	3,497	3,507	3,518	3,528	3,538	3,549	3,559	3,570	3,580
Industrial	96	96	96	96	96	97	97	97	97	97
Government	356	358	360	362	364	366	368	370	372	374
Other	23	23	23	23	23	23	23	23	23	23
Total	35,753	35,780	35,808	35,835	35,863	35,891	35,919	35,947	35,975	36,003

Customer Type	Demand 2021(ccf)	Demand 2022(ccf)	Demand 2023(ccf)	Demand 2024(ccf)	Demand 2025(ccf)	Demand 2026(ccf)	Demand 2027(ccf)	Demand 2028(ccf)	Demand 2029(ccf)	Demand 2030(ccf)
Resident	3,296,565	3,297,554	3,298,543	3,299,533	3,300,523	3,301,513	3,302,503	3,303,494	3,304,485	3,305,477
Multi- Residential	1,008,370	1,016,639	1,024,975	1,033,380	1,041,854	1,050,397	1,059,010	1,067,694	1,076,449	1,085,276
Commercial	1,321,801	1,325,714	1,329,638	1,333,574	1,337,521	1,341,480	1,345,451	1,349,433	1,353,428	1,357,434
Industrial	71,665	71,712	71,759	71,807	71,854	71,901	71,949	71,996	72,044	72,091
Government	346,545	348,513	350,493	352,484	354,486	356,499	358,524	360,561	362,609	364,668
Other	16,678	16,689	16,700	16,711	16,722	16,733	16,744	16,755	16,767	16,778
Unaccounted	124,729	124,825	124,921	125,017	125,114	125,211	125,308	125,406	125,504	125,602
Total	6,186,354	6,201,647	6,217,030	6,232,506	6,248,074	6,263,735	6,279,491	6,295,340	6,311,285	6,327,326

Customer Type	Demand 2021(AF)	Demand 2022(AF)	Demand 2023(AF)	Demand 2024(AF)	Demand 2025(AF)	Demand 2026(AF)	Demand 2027(AF)	Demand 2028(AF)	Demand 2029(AF)	Demand 2030(AF)
Resident	7,568	7,570	7,572	7,575	7,577	7,579	7,582	7,584	7,586	7,588
Multi- Residential	2,315	2,334	2,353	2,372	2,392	2,411	2,431	2,451	2,471	2,491
Commercial	3,034	3,043	3,052	3,061	3,071	3,080	3,089	3,098	3,107	3,116
Industrial	165	165	165	165	165	165	165	165	165	166
Government	796	800	805	809	814	818	823	828	832	837
Other	38	38	38	38	38	38	38	38	38	39
Unaccounted	286	287	287	287	287	287	288	288	288	288
Total	14,202	14,237	14,272	14,308	14,344	14,380	14,416	14,452	14,489	14,526

California Water Service Company - Mid-Peninsula District
Water Supply and Demand Analysis and Projections

2030's Projections

Scenario #1: Based on Maintaining Growth at the 10-Year Average Annual Growth and Low Demand per Service for each Customer Class.
 5-Year Average High

Customer Type	Projected Services 2031	Projected Services 2032	Projected Services 2033	Projected Services 2034	Projected Services 2035	Projected Services 2036	Projected Services 2037	Projected Services 2038	Projected Services 2039	Projected Services 2040
Resident	31,193	31,203	31,212	31,221	31,231	31,240	31,249	31,259	31,268	31,277
Multi- Residential	750	757	763	769	775	782	788	795	801	808
Commercial	3,591	3,602	3,612	3,623	3,634	3,645	3,655	3,666	3,677	3,688
Industrial	97	97	97	97	97	97	97	98	98	98
Government	375	377	380	382	384	386	388	390	393	395
Other	23	24	24	24	24	24	24	24	24	24
Total	36,030	36,059	36,087	36,116	36,144	36,173	36,202	36,231	36,260	36,289

Customer Type	Demand 2031(ccf)	Demand 2032(ccf)	Demand 2033(ccf)	Demand 2034(ccf)	Demand 2035(ccf)	Demand 2036(ccf)	Demand 2037(ccf)	Demand 2038(ccf)	Demand 2039(ccf)	Demand 2040(ccf)
Resident	3,306,468	3,307,460	3,308,452	3,309,445	3,310,438	3,311,431	3,312,424	3,313,418	3,314,412	3,315,406
Multi- Residential	1,094,175	1,103,148	1,112,194	1,121,314	1,130,508	1,139,778	1,149,125	1,158,547	1,168,048	1,177,626
Commercial	1,361,452	1,365,482	1,369,524	1,373,577	1,377,643	1,381,721	1,385,811	1,389,913	1,394,027	1,398,153
Industrial	72,305	72,353	72,400	72,448	72,496	72,544	72,592	72,640	72,688	72,736
Government	365,748	367,825	369,914	372,016	374,129	376,254	378,391	380,540	382,702	384,875
Other	16,827	16,838	16,849	16,861	16,872	16,883	16,894	16,905	16,916	16,927
Unaccounted	125,698	125,797	125,896	125,996	126,096	126,196	126,297	126,397	126,499	126,600
Total	6,342,674	6,358,903	6,375,230	6,391,656	6,408,181	6,424,807	6,441,533	6,458,361	6,475,291	6,492,324

Customer Type	Demand 2031(AF)	Demand 2032(AF)	Demand 2033(AF)	Demand 2034(AF)	Demand 2035(AF)	Demand 2036(AF)	Demand 2037(AF)	Demand 2038(AF)	Demand 2039(AF)	Demand 2040(AF)
Resident	7,591	7,593	7,595	7,597	7,600	7,602	7,604	7,607	7,609	7,611
Multi- Residential	2,512	2,532	2,553	2,574	2,595	2,617	2,638	2,660	2,681	2,703
Commercial	3,125	3,135	3,144	3,153	3,163	3,172	3,181	3,191	3,200	3,210
Industrial	166	166	166	166	166	167	167	167	167	167
Government	840	844	849	854	859	864	869	874	879	884
Other	39	39	39	39	39	39	39	39	39	39
Unaccounted	289	289	289	289	289	290	290	290	290	291
Total	14,561	14,598	14,636	14,673	14,711	14,749	14,788	14,826	14,865	14,904

California Water Service Company - Mid-Peninsula District

Water Supply and Demand Analysis and Projections

Scenario #2: Based on Maintaining Growth at the 10-Year 5-Year Average Annual Growth and Low Average High Demand per Service for each Customer Class.

Summary of Historical Growth Rate from Worksheet 2			
Customer Type	10 Yr. Avg. Historical Growth Rate	Individual Growth Rate Selected	Notes
Single Family Residential	0.030%	0.030%	Historical growth rate used
Multi Family Residential	0.820%	0.820%	Historical growth rate used
Commercial	0.296%	0.296%	Historical growth rate used
Industrial	-0.503%	0.066%	Overall growth rate used
Government	0.568%	0.568%	Historical growth rate used
Other	-0.667%	0.066%	Overall growth rate used
Overall	0.066%	0.075%	

Summary of Average Demand per Service from Worksheets 5 and 6									
Demand/Serv. Units	Multi-Residential			Commercial	Industrial	Government	Total Other	Unaccounted Total Serv.	Combined Demand/Serv.
	Residential	(service)	(unit)						
Gal/Service/Yr	107,030	1,255,135	48,222	334,533	418,978	813,318	2,970,891	12,679	168,011
AF/Service/Yr	0.328	3.852	0.148	1.027	1.286	2.496	9.117	0.039	0.516
Gal/Service/Day	293	3,439	132	917	1,148	2,228	8,139	35	460

California Water Service Company - Mid-Peninsula District
Water Supply and Demand Analysis and Projections

30-year projection Summary

Scenario #2: Based on Maintaining Growth at the 10-Year 5-Year Average Annual Growth and Low Average High Demand per Service for each Customer Class.

Customer Type	Projected Services 2010	Projected Services 2015	Projected Services 2020	Projected Services 2025	Projected Services 2030	Projected Services 2035	Projected Services 2040	Services projected to be added from 2010 - 2040
Single Family Residential	30,997	31,044	31,090	31,137	31,184	31,231	31,277	280
Multi Family Residential	632	658	686	715	744	775	808	175
Commercial	3,375	3,425	3,476	3,528	3,580	3,634	3,688	313
Industrial	95	96	96	96	97	97	97	2
Government	336	345	355	365	375	386	397	61
Other	23	23	23	23	23	23	24	1
Total	35,458	35,591	35,726	35,864	36,004	36,146	36,291	832

Customer Type	Projected Demand 2010 (ccf)	Projected Demand 2015 (ccf)	Projected Demand 2020 (ccf)	Projected Demand 2025 (ccf)	Projected Demand 2030 (ccf)	Projected Demand 2035 (ccf)	Projected Demand 2040 (ccf)	Projected demand to be added from 2010 - 2040 (ccf)
Single Family Residential	4,435,013	4,441,670	4,448,336	4,455,013	4,461,699	4,468,396	4,475,103	40,089
Multi Family Residential	1,060,648	1,104,854	1,150,902	1,198,869	1,248,835	1,300,884	1,355,102	294,454
Commercial	1,509,296	1,531,766	1,554,571	1,577,715	1,601,204	1,625,042	1,649,236	139,940
Industrial	53,244	53,542	53,719	53,897	54,075	54,254	54,433	1,189
Government	365,202	374,676	385,439	396,510	407,900	419,616	431,670	66,467
Other	91,405	91,917	92,221	92,526	92,832	93,138	93,446	2,042
Unaccounted	600,983	603,228	605,522	607,854	610,225	612,637	615,091	14,108
Total	8,115,790	8,201,653	8,290,709	8,382,383	8,476,769	8,573,967	8,674,079	558,290

Customer Type	Projected Demand 2010 (AF)	Projected Demand 2015 (AF)	Projected Demand 2020 (AF)	Projected Demand 2025 (AF)	Projected Demand 2030 (AF)	Projected Demand 2035 (AF)	Projected Demand 2040 (AF)	Projected demand to be added from 2010 - 2040 (AF)
Single Family Residential	10,181	10,197	10,212	10,227	10,243	10,258	10,273	92
Multi Family Residential	2,435	2,536	2,642	2,752	2,867	2,986	3,111	676
Commercial	3,465	3,516	3,569	3,622	3,676	3,731	3,786	321
Industrial	122	123	123	124	124	125	125	3
Government	838	860	885	910	936	963	991	153
Other	210	211	212	212	213	214	215	5
Unaccounted	1,380	1,385	1,390	1,395	1,401	1,406	1,412	32
Total	18,631	18,829	19,033	19,243	19,460	19,683	19,913	1,282

California Water Service Company - Mid-Peninsula District
Water Supply and Demand Analysis and Projections

2000's Projections

Scenario #2: Based on Maintaining Growth at the 10-Year 5-Year Average Annual Growth and Low Average High Demand per Service for each Customer Class.

Customer Type	Actual Services 2001	Actual Services 2002	Actual Services 2003	Actual Services 2004	Actual Services 2005	Actual Services 2006	Actual Services 2007	Actual Services 2008	Actual Services 2009	Projected Services 2010
Resident	30,943	30,934	31,043	31,065	31,107	31,128	31,139	31,060	30,988	30,997
Multi- Residential	583	581	577	579	579	573	571	600	627	632
Commercial	3,289	3,293	3,300	3,320	3,318	3,317	3,313	3,336	3,365	3,375
Industrial	102	102	99	98	98	98	98	96	95	95
Government	327	327	278	278	278	280	282	311	334	336
Other	34	27	22	23	22	20	28	27	23	23
Total	35,278	35,264	35,319	35,362	35,402	35,416	35,431	35,430	35,432	35,458

2003 Government Service Count has been adjusted for a one time inactivation of infrequently used City of San Mateo irrigation services.

Customer Type	Demand 2001(ccf)	Demand 2002(ccf)	Demand 2003(ccf)	Demand 2004(ccf)	Demand 2005(ccf)	Demand 2006(ccf)	Demand 2007(ccf)	Demand 2008(ccf)	Demand 2009(ccf)	Demand 2010(ccf)
Resident	4,427,245	4,425,957	4,441,612	4,444,676	4,450,650	4,453,714	4,455,288	4,443,985	4,433,683	4,435,013
Multi- Residential	978,195	974,840	967,569	971,344	971,344	961,417	958,061	1,006,719	1,052,021	1,060,648
Commercial	1,470,854	1,472,643	1,475,773	1,484,568	1,483,972	1,483,376	1,481,587	1,491,873	1,504,841	1,509,296
Industrial	57,129	57,129	55,449	54,889	54,889	54,889	54,889	53,769	53,209	53,244
Government	355,529	355,529	302,254	302,254	302,254	304,428	306,603	338,133	363,139	365,202
Other	135,031	108,885	86,711	91,344	88,035	79,430	111,202	107,230	91,344	91,405
Unaccounted	597,925	597,695	598,619	599,356	600,027	600,264	600,519	600,502	600,536	600,983
Total	8,021,908	7,992,677	7,927,987	7,948,432	7,951,170	7,937,518	7,968,147	8,042,210	8,098,774	8,115,790

Customer Type	Demand 2001(AF)	Demand 2002(AF)	Demand 2003(AF)	Demand 2004(AF)	Demand 2005(AF)	Demand 2006(AF)	Demand 2007(AF)	Demand 2008(AF)	Demand 2009(AF)	Demand 2010(AF)
Resident	10,164	10,161	10,197	10,204	10,217	10,224	10,228	10,202	10,178	10,181
Multi- Residential	2,246	2,238	2,221	2,230	2,230	2,207	2,199	2,311	2,415	2,435
Commercial	3,377	3,381	3,388	3,408	3,407	3,405	3,401	3,425	3,455	3,465
Industrial	131	131	127	126	126	126	126	123	122	122
Government	816	816	694	694	694	699	704	776	834	838
Other	310	250	199	210	202	182	255	246	210	210
Unaccounted	1,373	1,372	1,374	1,376	1,377	1,378	1,379	1,379	1,379	1,380
Total	18,416	18,349	18,200	18,247	18,254	18,222	18,292	18,463	18,592	18,631

California Water Service Company - Mid-Peninsula District Water Supply and Demand Analysis and Projections

2010's Projections

Scenario #2: Based on Maintaining Growth at the 10-Year 5-Year Average Annual Growth and Low Average High Demand per Service for each Customer Class.

Customer Type	Projected Services 2011	Projected Services 2012	Projected Services 2013	Projected Services 2014	Projected Services 2015	Projected Services 2016	Projected Services 2017	Projected Services 2018	Projected Services 2019	Projected Services 2020
Resident	31,007	31,016	31,025	31,035	31,044	31,053	31,062	31,072	31,081	31,090
Multi- Residential	637	643	648	653	658	664	669	675	680	686
Commercial	3,385	3,395	3,405	3,415	3,425	3,435	3,446	3,456	3,466	3,476
Industrial	95	95	95	96	96	96	96	96	96	96
Government	337	339	341	343	345	347	349	351	353	355
Other	23	23	23	23	23	23	23	23	23	23
Total	35,484	35,511	35,537	35,564	35,591	35,618	35,645	35,672	35,699	35,726

Customer Type	Demand 2011(ccf)	Demand 2012(ccf)	Demand 2013(ccf)	Demand 2014(ccf)	Demand 2015(ccf)	Demand 2016(ccf)	Demand 2017(ccf)	Demand 2018(ccf)	Demand 2019(ccf)	Demand 2020(ccf)
Resident	4,436,344	4,437,675	4,439,006	4,440,338	4,441,670	4,443,002	4,444,335	4,445,669	4,447,002	4,448,336
Multi- Residential	1,069,345	1,078,114	1,086,954	1,095,867	1,104,854	1,113,913	1,123,047	1,132,256	1,141,541	1,150,902
Commercial	1,513,763	1,518,244	1,522,738	1,527,245	1,531,766	1,536,300	1,540,847	1,545,408	1,549,983	1,554,571
Industrial	53,401	53,436	53,472	53,507	53,542	53,578	53,613	53,648	53,684	53,719
Government	366,283	368,364	370,456	372,560	374,676	376,804	378,945	381,097	383,262	385,439
Other	91,675	91,736	91,796	91,857	91,917	91,978	92,039	92,099	92,160	92,221
Unaccounted	601,420	601,870	602,321	602,774	603,228	603,684	604,141	604,600	605,060	605,522
Total	8,132,232	8,149,438	8,166,743	8,184,148	8,201,653	8,219,260	8,236,968	8,254,778	8,272,692	8,290,709

Customer Type	Demand 2011(AF)	Demand 2012(AF)	Demand 2013(AF)	Demand 2014(AF)	Demand 2015(AF)	Demand 2016(AF)	Demand 2017(AF)	Demand 2018(AF)	Demand 2019(AF)	Demand 2020(AF)
Resident	10,185	10,188	10,191	10,194	10,197	10,200	10,203	10,206	10,209	10,212
Multi- Residential	2,455	2,475	2,495	2,516	2,536	2,557	2,578	2,599	2,621	2,642
Commercial	3,475	3,485	3,496	3,506	3,516	3,527	3,537	3,548	3,558	3,569
Industrial	123	123	123	123	123	123	123	123	123	123
Government	841	846	850	855	860	865	870	875	880	885
Other	210	211	211	211	211	211	211	211	212	212
Unaccounted	1,381	1,382	1,383	1,384	1,385	1,386	1,387	1,388	1,389	1,390
Total	18,669	18,709	18,748	18,788	18,829	18,869	18,910	18,950	18,992	19,033

California Water Service Company - Mid-Peninsula District Water Supply and Demand Analysis and Projections

2020's Projections

Scenario #2: Based on Maintaining Growth at the

- 10-Year
- 5-Year

Average Annual Growth and

- Low

- Average

- High

Demand per Service for each Customer Class.

Customer Type	Projected Services 2021	Projected Services 2022	Projected Services 2023	Projected Services 2024	Projected Services 2025	Projected Services 2026	Projected Services 2027	Projected Services 2028	Projected Services 2029	Projected Services 2030
Resident	31,100	31,109	31,118	31,128	31,137	31,146	31,156	31,165	31,174	31,184
Multi- Residential	692	697	703	709	715	720	726	732	738	744
Commercial	3,486	3,497	3,507	3,518	3,528	3,538	3,549	3,559	3,570	3,580
Industrial	96	96	96	96	96	96	96	96	96	97
Government	357	359	361	363	365	367	369	371	373	375
Other	23	23	23	23	23	23	23	23	23	23
Total	35,754	35,781	35,808	35,836	35,864	35,892	35,919	35,947	35,976	36,004

Customer Type	Demand 2021(ccf)	Demand 2022(ccf)	Demand 2023(ccf)	Demand 2024(ccf)	Demand 2025(ccf)	Demand 2026(ccf)	Demand 2027(ccf)	Demand 2028(ccf)	Demand 2029(ccf)	Demand 2030(ccf)
Resident	4,449,671	4,451,006	4,452,341	4,453,677	4,455,013	4,456,349	4,457,686	4,459,024	4,460,361	4,461,699
Multi- Residential	1,160,339	1,169,854	1,179,447	1,189,118	1,198,869	1,208,700	1,218,611	1,228,603	1,238,678	1,248,835
Commercial	1,559,172	1,563,787	1,568,416	1,573,059	1,577,715	1,582,385	1,587,069	1,591,767	1,596,478	1,601,204
Industrial	53,755	53,790	53,826	53,861	53,897	53,932	53,968	54,004	54,039	54,075
Government	387,628	389,830	392,044	394,271	396,510	398,762	401,027	403,305	405,596	407,900
Other	92,282	92,343	92,404	92,465	92,526	92,587	92,648	92,709	92,770	92,832
Unaccounted	605,985	606,450	606,916	607,384	607,854	608,325	608,797	609,272	609,747	610,225
Total	8,308,832	8,327,059	8,345,393	8,363,834	8,382,383	8,401,040	8,419,806	8,438,683	8,457,670	8,476,769

Customer Type	Demand 2021(AF)	Demand 2022(AF)	Demand 2023(AF)	Demand 2024(AF)	Demand 2025(AF)	Demand 2026(AF)	Demand 2027(AF)	Demand 2028(AF)	Demand 2029(AF)	Demand 2030(AF)
Resident	10,215	10,218	10,221	10,224	10,227	10,230	10,234	10,237	10,240	10,243
Multi- Residential	2,664	2,686	2,708	2,730	2,752	2,775	2,798	2,821	2,844	2,867
Commercial	3,579	3,590	3,601	3,611	3,622	3,633	3,643	3,654	3,665	3,676
Industrial	123	123	124	124	124	124	124	124	124	124
Government	890	895	900	905	910	915	921	926	931	936
Other	212	212	212	212	212	213	213	213	213	213
Unaccounted	1,391	1,392	1,393	1,394	1,395	1,397	1,398	1,399	1,400	1,401
Total	19,075	19,116	19,159	19,201	19,243	19,286	19,329	19,373	19,416	19,460

California Water Service Company - Mid-Peninsula District
Water Supply and Demand Analysis and Projections

2030's Projections

Scenario #2: Based on Maintaining Growth at the 10-Year 5-Year Average Annual Growth and Low Average High Demand per Service for each Customer Class.

Customer Type	Projected Services 2031	Projected Services 2032	Projected Services 2033	Projected Services 2034	Projected Services 2035	Projected Services 2036	Projected Services 2037	Projected Services 2038	Projected Services 2039	Projected Services 2040
Resident	31,193	31,203	31,212	31,221	31,231	31,240	31,249	31,259	31,268	31,277
Multi- Residential	750	757	763	769	775	782	788	795	801	808
Commercial	3,591	3,602	3,612	3,623	3,634	3,645	3,655	3,666	3,677	3,688
Industrial	97	97	97	97	97	97	97	97	97	97
Government	377	379	382	384	386	388	390	393	395	397
Other	23	23	23	23	23	23	23	23	24	24
Total	36,032	36,060	36,089	36,117	36,146	36,175	36,204	36,233	36,262	36,291

Customer Type	Demand 2031(ccf)	Demand 2032(ccf)	Demand 2033(ccf)	Demand 2034(ccf)	Demand 2035(ccf)	Demand 2036(ccf)	Demand 2037(ccf)	Demand 2038(ccf)	Demand 2039(ccf)	Demand 2040(ccf)
Resident	4,463,038	4,464,377	4,465,716	4,467,056	4,468,396	4,469,736	4,471,077	4,472,419	4,473,760	4,475,103
Multi- Residential	1,259,076	1,269,400	1,279,809	1,290,304	1,300,884	1,311,551	1,322,306	1,333,149	1,344,081	1,355,102
Commercial	1,605,943	1,610,697	1,615,465	1,620,246	1,625,042	1,629,852	1,634,677	1,639,515	1,644,368	1,649,236
Industrial	54,111	54,146	54,182	54,218	54,254	54,289	54,325	54,361	54,397	54,433
Government	410,216	412,546	414,890	417,246	419,616	422,000	424,397	426,807	429,232	431,670
Other	92,893	92,954	93,015	93,077	93,138	93,200	93,261	93,323	93,384	93,446
Unaccounted	610,704	611,185	611,667	612,151	612,637	613,124	613,613	614,104	614,596	615,091
Total	8,495,981	8,515,305	8,534,744	8,554,298	8,573,967	8,593,753	8,613,657	8,633,678	8,653,819	8,674,079

Customer Type	Demand 2031(AF)	Demand 2032(AF)	Demand 2033(AF)	Demand 2034(AF)	Demand 2035(AF)	Demand 2036(AF)	Demand 2037(AF)	Demand 2038(AF)	Demand 2039(AF)	Demand 2040(AF)
Resident	10,246	10,249	10,252	10,255	10,258	10,261	10,264	10,267	10,270	10,273
Multi- Residential	2,890	2,914	2,938	2,962	2,986	3,011	3,036	3,061	3,086	3,111
Commercial	3,687	3,698	3,709	3,720	3,731	3,742	3,753	3,764	3,775	3,786
Industrial	124	124	124	124	125	125	125	125	125	125
Government	942	947	952	958	963	969	974	980	985	991
Other	213	213	214	214	214	214	214	214	214	215
Unaccounted	1,402	1,403	1,404	1,405	1,406	1,408	1,409	1,410	1,411	1,412
Total	19,504	19,549	19,593	19,638	19,683	19,729	19,774	19,820	19,867	19,913

California Water Service Company - Mid-Peninsula District

Water Supply and Demand Analysis and Projections

Worksheet 12

Scenario #3: Based on Maintaining Growth at the 10-Year 5-Year Average Annual Growth and Low Average High Demand per Service for each Customer Class.

Summary of Historical Growth Rate from Worksheet 2			
Customer Type	10 Yr. Avg. Historical Growth Rate	Individual Growth Rate Selected	Notes
Single Family Residential	0.030%	0.030%	Historical growth rate used
Multi Family Residential	0.820%	0.820%	Historical growth rate used
Commercial	0.296%	0.296%	Historical growth rate used
Industrial	-0.503%	0.066%	Overall growth rate used
Government	0.568%	0.568%	Historical growth rate used
Other	-0.667%	0.066%	Overall growth rate used
Overall	0.066%	0.075%	

Summary of Average Demand per Service from Worksheets 5 and 6									
Demand/Serv. Units	Multi-Residential			Commercial	Industrial	Government	Total Other	Unaccounted Total Serv.	Combined Demand/Serv.
	Residential	(service)	(unit)						
Gal/Service/Yr	115,764	1,295,369	61,838	362,743	1,073,124	992,917	4,069,728	20,648	190,132
AF/Service/Yr	0.355	3.975	0.190	1.113	3.293	3.047	12.490	0.063	0.583
Gal/Service/Day	317	3,549	169	994	2,940	2,720	11,150	57	521

California Water Service Company - Mid-Peninsula District
Water Supply and Demand Analysis and Projections

30-year projection Summary

Scenario #3: Based on Maintaining Growth at the 10-Year 5-Year Average Annual Growth and Low Average High Demand per Service for each Customer Class.

Customer Type	Projected Services 2010	Projected Services 2015	Projected Services 2020	Projected Services 2025	Projected Services 2030	Projected Services 2035	Projected Services 2040	Services projected to be added from 2010 - 2040
Single Family Residential	30,997	31,044	31,090	31,137	31,184	31,231	31,277	280
Multi Family Residential	632	658	686	715	744	775	808	175
Commercial	3,375	3,425	3,476	3,528	3,580	3,634	3,688	313
Industrial	95	96	96	96	97	97	98	3
Government	336	345	355	364	374	384	395	59
Other	23	23	23	23	23	24	24	1
Total	35,458	35,591	35,726	35,863	36,003	36,144	36,289	831

Customer Type	Projected Demand 2010 (ccf)	Projected Demand 2015 (ccf)	Projected Demand 2020 (ccf)	Projected Demand 2025 (ccf)	Projected Demand 2030 (ccf)	Projected Demand 2035 (ccf)	Projected Demand 2040 (ccf)	Projected demand to be added from 2010 - 2040 (ccf)
Single Family Residential	4,796,952	4,804,151	4,811,362	4,818,583	4,825,816	4,833,059	4,840,313	43,361
Multi Family Residential	1,094,647	1,140,270	1,187,794	1,237,299	1,288,867	1,342,584	1,398,540	303,893
Commercial	1,636,569	1,660,934	1,685,662	1,710,758	1,736,227	1,762,076	1,788,309	151,741
Industrial	136,372	137,138	137,591	138,363	138,820	139,599	140,060	3,688
Government	445,847	457,413	470,552	482,759	496,626	509,510	524,145	78,298
Other	125,129	125,832	126,247	126,956	127,375	128,090	128,513	3,384
Unaccounted	978,722	982,380	986,115	989,893	993,754	997,660	1,001,654	22,931
Total	9,214,239	9,308,117	9,405,322	9,504,609	9,607,484	9,712,576	9,821,534	607,295

Customer Type	Projected Demand 2010 (AF)	Projected Demand 2015 (AF)	Projected Demand 2020 (AF)	Projected Demand 2025 (AF)	Projected Demand 2030 (AF)	Projected Demand 2035 (AF)	Projected Demand 2040 (AF)	Projected demand to be added from 2010 - 2040 (AF)
Single Family Residential	11,012	11,029	11,045	11,062	11,079	11,095	11,112	100
Multi Family Residential	2,513	2,618	2,727	2,840	2,959	3,082	3,211	698
Commercial	3,757	3,813	3,870	3,927	3,986	4,045	4,105	348
Industrial	313	315	316	318	319	320	322	8
Government	1,024	1,050	1,080	1,108	1,140	1,170	1,203	180
Other	287	289	290	291	292	294	295	8
Unaccounted	2,247	2,255	2,264	2,272	2,281	2,290	2,299	53
Total	21,153	21,369	21,592	21,820	22,056	22,297	22,547	1,394

California Water Service Company - Mid-Peninsula District
Water Supply and Demand Analysis and Projections

2000's Projections

Scenario #3: Based on Maintaining Growth at the 10-Year 5-Year Average Annual Growth and Low Average High Demand per Service for each Customer Class.

Customer Type	Actual Services 2001	Actual Services 2002	Actual Services 2003	Actual Services 2004	Actual Services 2005	Actual Services 2006	Actual Services 2007	Actual Services 2008	Actual Services 2009	Projected Services 2010
Resident	30,943	30,934	31,043	31,065	31,107	31,128	31,139	31,060	30,988	30,997
Multi- Residential	583	581	577	579	579	573	571	600	627	632
Commercial	3,289	3,293	3,300	3,320	3,318	3,317	3,313	3,336	3,365	3,375
Industrial	102	102	99	98	98	98	98	96	95	95
Government	327	327	278	278	278	280	282	311	334	336
Other	34	27	22	23	22	20	28	27	23	23
Total	35,278	35,264	35,319	35,362	35,402	35,416	35,431	35,430	35,432	35,458

2003 Government Service Count has been adjusted for a one time inactivation of infrequently used City of San Mateo irrigation services.

Customer Type	Demand 2001(ccf)	Demand 2002(ccf)	Demand 2003(ccf)	Demand 2004(ccf)	Demand 2005(ccf)	Demand 2006(ccf)	Demand 2007(ccf)	Demand 2008(ccf)	Demand 2009(ccf)	Demand 2010(ccf)
Resident	4,788,549	4,787,156	4,804,089	4,807,403	4,813,864	4,817,179	4,818,881	4,806,655	4,795,513	4,796,952
Multi- Residential	1,009,551	1,006,088	998,584	1,002,480	1,002,480	992,235	988,772	1,038,989	1,085,744	1,094,647
Commercial	1,594,885	1,596,825	1,600,219	1,609,756	1,609,110	1,608,463	1,606,523	1,617,676	1,631,739	1,636,569
Industrial	146,324	146,324	142,021	140,586	140,586	140,586	140,586	137,717	136,283	136,372
Government	434,037	434,037	368,998	368,998	368,998	371,653	374,307	412,800	443,329	445,847
Other	184,974	149,158	118,782	125,129	120,596	108,808	152,332	146,891	125,129	125,129
Unaccounted	973,744	973,369	974,874	976,074	977,167	977,553	977,967	977,940	977,995	978,722
Total	9,132,066	9,092,958	9,007,567	9,030,428	9,032,801	9,016,477	9,059,368	9,138,669	9,195,731	9,214,239

Customer Type	Demand 2001(AF)	Demand 2002(AF)	Demand 2003(AF)	Demand 2004(AF)	Demand 2005(AF)	Demand 2006(AF)	Demand 2007(AF)	Demand 2008(AF)	Demand 2009(AF)	Demand 2010(AF)
Resident	10,993	10,990	11,029	11,036	11,051	11,059	11,063	11,035	11,009	11,012
Multi- Residential	2,318	2,310	2,292	2,301	2,301	2,278	2,270	2,385	2,493	2,513
Commercial	3,661	3,666	3,674	3,696	3,694	3,693	3,688	3,714	3,746	3,757
Industrial	336	336	326	323	323	323	323	316	313	313
Government	996	996	847	847	847	853	859	948	1,018	1,024
Other	425	342	273	287	277	250	350	337	287	287
Unaccounted	2,235	2,235	2,238	2,241	2,243	2,244	2,245	2,245	2,245	2,247
Total	20,964	20,875	20,679	20,731	20,737	20,699	20,798	20,980	21,111	21,153

California Water Service Company - Mid-Peninsula District
Water Supply and Demand Analysis and Projections

2010's Projections

Scenario #3: Based on Maintaining Growth at the 10-Year 5-Year Average Annual Growth and Low Average High Demand per Service for each Customer Class.

Customer Type	Projected Services 2011	Projected Services 2012	Projected Services 2013	Projected Services 2014	Projected Services 2015	Projected Services 2016	Projected Services 2017	Projected Services 2018	Projected Services 2019	Projected Services 2020
Resident	31,007	31,016	31,025	31,035	31,044	31,053	31,062	31,072	31,081	31,090
Multi- Residential	637	643	648	653	658	664	669	675	680	686
Commercial	3,385	3,395	3,405	3,415	3,425	3,435	3,446	3,456	3,466	3,476
Industrial	95	95	95	96	96	96	96	96	96	96
Government	337	339	341	343	345	347	349	351	353	355
Other	23	23	23	23	23	23	23	23	23	23
Total	35,484	35,511	35,537	35,564	35,591	35,618	35,645	35,672	35,699	35,726

Customer Type	Demand 2011(ccf)	Demand 2012(ccf)	Demand 2013(ccf)	Demand 2014(ccf)	Demand 2015(ccf)	Demand 2016(ccf)	Demand 2017(ccf)	Demand 2018(ccf)	Demand 2019(ccf)	Demand 2020(ccf)
Resident	4,798,391	4,799,830	4,801,270	4,802,711	4,804,151	4,805,593	4,807,034	4,808,476	4,809,919	4,811,362
Multi- Residential	1,103,623	1,112,673	1,121,797	1,130,995	1,140,270	1,149,620	1,159,047	1,168,551	1,178,133	1,187,794
Commercial	1,641,413	1,646,272	1,651,145	1,656,032	1,660,934	1,665,850	1,670,781	1,675,727	1,680,687	1,685,662
Industrial	136,776	136,866	136,957	137,047	137,138	137,228	137,319	137,409	137,500	137,591
Government	447,166	449,706	452,261	454,830	457,413	460,011	462,624	465,252	467,894	470,552
Other	125,500	125,583	125,666	125,749	125,832	125,915	125,998	126,081	126,164	126,247
Unaccounted	979,435	980,168	980,903	981,640	982,380	983,122	983,866	984,613	985,363	986,115
Total	9,232,305	9,251,098	9,269,997	9,289,003	9,308,117	9,327,338	9,346,669	9,366,109	9,385,660	9,405,322

Customer Type	Demand 2011(AF)	Demand 2012(AF)	Demand 2013(AF)	Demand 2014(AF)	Demand 2015(AF)	Demand 2016(AF)	Demand 2017(AF)	Demand 2018(AF)	Demand 2019(AF)	Demand 2020(AF)
Resident	11,016	11,019	11,022	11,026	11,029	11,032	11,036	11,039	11,042	11,045
Multi- Residential	2,534	2,554	2,575	2,596	2,618	2,639	2,661	2,683	2,705	2,727
Commercial	3,768	3,779	3,791	3,802	3,813	3,824	3,836	3,847	3,858	3,870
Industrial	314	314	314	315	315	315	315	315	316	316
Government	1,027	1,032	1,038	1,044	1,050	1,056	1,062	1,068	1,074	1,080
Other	288	288	288	289	289	289	289	289	290	290
Unaccounted	2,248	2,250	2,252	2,254	2,255	2,257	2,259	2,260	2,262	2,264
Total	21,195	21,238	21,281	21,325	21,369	21,413	21,457	21,502	21,547	21,592

California Water Service Company - Mid-Peninsula District
Water Supply and Demand Analysis and Projections

2020's Projections

Scenario #3: Based on Maintaining Growth at the 10-Year 5-Year Average Annual Growth and Low Average High Demand per Service for each Customer Class.

Customer Type	Projected Services 2021	Projected Services 2022	Projected Services 2023	Projected Services 2024	Projected Services 2025	Projected Services 2026	Projected Services 2027	Projected Services 2028	Projected Services 2029	Projected Services 2030
Resident	31,100	31,109	31,118	31,128	31,137	31,146	31,156	31,165	31,174	31,184
Multi- Residential	692	697	703	709	715	720	726	732	738	744
Commercial	3,486	3,497	3,507	3,518	3,528	3,538	3,549	3,559	3,570	3,580
Industrial	96	96	96	96	96	97	97	97	97	97
Government	356	358	360	362	364	366	368	370	372	374
Other	23	23	23	23	23	23	23	23	23	23
Total	35,753	35,780	35,808	35,835	35,863	35,891	35,919	35,947	35,975	36,003

Customer Type	Demand 2021(ccf)	Demand 2022(ccf)	Demand 2023(ccf)	Demand 2024(ccf)	Demand 2025(ccf)	Demand 2026(ccf)	Demand 2027(ccf)	Demand 2028(ccf)	Demand 2029(ccf)	Demand 2030(ccf)
Resident	4,812,805	4,814,249	4,815,694	4,817,138	4,818,583	4,820,029	4,821,475	4,822,921	4,824,368	4,825,816
Multi- Residential	1,197,534	1,207,353	1,217,254	1,227,235	1,237,299	1,247,444	1,257,673	1,267,986	1,278,384	1,288,867
Commercial	1,690,651	1,695,656	1,700,675	1,705,709	1,710,758	1,715,821	1,720,900	1,725,994	1,731,103	1,736,227
Industrial	137,998	138,089	138,180	138,271	138,363	138,454	138,545	138,637	138,728	138,820
Government	471,945	474,625	477,321	480,032	482,759	485,501	488,259	491,032	493,821	496,626
Other	126,621	126,705	126,788	126,872	126,956	127,039	127,123	127,207	127,291	127,375
Unaccounted	986,850	987,607	988,366	989,128	989,893	990,660	991,429	992,201	992,976	993,754
Total	9,424,404	9,444,284	9,464,278	9,484,386	9,504,609	9,524,949	9,545,405	9,565,979	9,586,672	9,607,484

Customer Type	Demand 2021(AF)	Demand 2022(AF)	Demand 2023(AF)	Demand 2024(AF)	Demand 2025(AF)	Demand 2026(AF)	Demand 2027(AF)	Demand 2028(AF)	Demand 2029(AF)	Demand 2030(AF)
Resident	11,049	11,052	11,055	11,059	11,062	11,065	11,069	11,072	11,075	11,079
Multi- Residential	2,749	2,772	2,794	2,817	2,840	2,864	2,887	2,911	2,935	2,959
Commercial	3,881	3,893	3,904	3,916	3,927	3,939	3,951	3,962	3,974	3,986
Industrial	317	317	317	317	318	318	318	318	318	319
Government	1,083	1,090	1,096	1,102	1,108	1,115	1,121	1,127	1,134	1,140
Other	291	291	291	291	291	292	292	292	292	292
Unaccounted	2,266	2,267	2,269	2,271	2,272	2,274	2,276	2,278	2,280	2,281
Total	21,636	21,681	21,727	21,773	21,820	21,866	21,913	21,961	22,008	22,056

**California Water Service Company - Mid-Peninsula District
Water Supply and Demand Analysis and Projections**

Scenario #3: Based on Maintaining Growth at the

- 10-Year
- 5-Year

Average Annual Growth and

- Low
- Average
- High

2030's Projections

Demand per Service for each Customer Class.

Customer Type	Projected Services 2031	Projected Services 2032	Projected Services 2033	Projected Services 2034	Projected Services 2035	Projected Services 2036	Projected Services 2037	Projected Services 2038	Projected Services 2039	Projected Services 2040
Resident	31,193	31,203	31,212	31,221	31,231	31,240	31,249	31,259	31,268	31,277
Multi- Residential	750	757	763	769	775	782	788	795	801	808
Commercial	3,591	3,602	3,612	3,623	3,634	3,645	3,655	3,666	3,677	3,688
Industrial	97	97	97	97	97	97	97	98	98	98
Government	375	377	380	382	384	386	388	390	393	395
Other	23	23	24	24	24	24	24	24	24	24
Total	36,030	36,059	36,087	36,116	36,144	36,173	36,202	36,231	36,260	36,289

Customer Type	Demand 2031(ccf)	Demand 2032(ccf)	Demand 2033(ccf)	Demand 2034(ccf)	Demand 2035(ccf)	Demand 2036(ccf)	Demand 2037(ccf)	Demand 2038(ccf)	Demand 2039(ccf)	Demand 2040(ccf)
Resident	4,827,263	4,828,711	4,830,160	4,831,609	4,833,059	4,834,509	4,835,959	4,837,410	4,838,861	4,840,313
Multi- Residential	1,299,435	1,310,091	1,320,833	1,331,664	1,342,584	1,353,593	1,364,693	1,375,883	1,387,165	1,398,540
Commercial	1,741,366	1,746,521	1,751,691	1,756,876	1,762,076	1,767,292	1,772,523	1,777,769	1,783,032	1,788,309
Industrial	139,231	139,323	139,415	139,507	139,599	139,691	139,783	139,875	139,968	140,060
Government	498,096	500,925	503,770	506,632	509,510	512,404	515,314	518,241	521,185	524,145
Other	127,752	127,836	127,921	128,005	128,090	128,174	128,259	128,344	128,428	128,513
Unaccounted	994,513	995,296	996,081	996,869	997,660	998,453	999,249	1,000,048	1,000,850	1,001,654
Total	9,627,657	9,648,703	9,669,871	9,691,162	9,712,576	9,734,115	9,755,779	9,777,570	9,799,488	9,821,534

Customer Type	Demand 2031(AF)	Demand 2032(AF)	Demand 2033(AF)	Demand 2034(AF)	Demand 2035(AF)	Demand 2036(AF)	Demand 2037(AF)	Demand 2038(AF)	Demand 2039(AF)	Demand 2040(AF)
Resident	11,082	11,085	11,089	11,092	11,095	11,099	11,102	11,105	11,109	11,112
Multi- Residential	2,983	3,008	3,032	3,057	3,082	3,107	3,133	3,159	3,185	3,211
Commercial	3,998	4,009	4,021	4,033	4,045	4,057	4,069	4,081	4,093	4,105
Industrial	320	320	320	320	320	321	321	321	321	322
Government	1,143	1,150	1,157	1,163	1,170	1,176	1,183	1,190	1,196	1,203
Other	293	293	294	294	294	294	294	295	295	295
Unaccounted	2,283	2,285	2,287	2,289	2,290	2,292	2,294	2,296	2,298	2,299
Total	22,102	22,151	22,199	22,248	22,297	22,347	22,396	22,446	22,497	22,547

California Water Service Company - Mid-Peninsula District

Water Supply and Demand Analysis and Projections

Worksheet 13

Scenario #4: Based on Maintaining Growth at the 20-Year Average Annual Growth
 10-Year

Summary of Historical Growth Rate from Worksheet 2			
Customer Type	20 Yr. Avg. Historical Growth Rate	Individual Growth Rate Selected	Notes
Single Family Residential	0.121%	0.121%	Historical growth rate used
Multi Family Residential	0.613%	0.613%	Historical growth rate used
Commercial	0.051%	0.051%	Historical growth rate used
Industrial	-0.539%	0.122%	Overall growth rate used
Government	0.542%	0.122%	Overall growth rate used
Other	1.490%	0.122%	Overall growth rate used
Overall	0.122%	0.128%	

California Water Service Company - Mid-Peninsula District
Water Supply and Demand Analysis and Projections

Worksheet 13

30-year projection Summary

Scenario #4: Based on Maintaining Growth at the 20-Year Average Annual Growth
 10-Year

Customer Type	Projected Services 2010	Projected Services 2015	Projected Services 2020	Projected Services 2025	Projected Services 2030	Projected Services 2035	Projected Services 2040	Services projected to be added from 2010 - 2040
Single Family Residential	31,025	31,214	31,403	31,593	31,785	31,978	32,172	1,146
Multi Family Residential	631	650	671	691	713	735	758	127
Commercial	3,367	3,375	3,384	3,393	3,401	3,410	3,419	52
Industrial	95	96	96	97	97	98	99	4
Government	334	336	339	341	343	345	347	12
Other	23	23	23	23	24	24	24	1
Total	35,476	35,695	35,916	36,138	36,363	36,589	36,818	1,342

California Water Service Company - Mid-Peninsula District
Water Supply and Demand Analysis and Projections

Worksheet 13

2000's Projections

Scenario #4: Based on Maintaining Growth at the 20-Year Average Annual Growth
 10-Year

Customer Type	Actual Services 2001	Actual Services 2002	Actual Services 2003	Actual Services 2004	Actual Services 2005	Actual Services 2006	Actual Services 2007	Actual Services 2008	Actual Services 2009	Projected Services 2010
Resident	30,943	30,934	31,043	31,065	31,107	31,128	31,139	31,060	30,988	31,025
Multi- Residential	583	581	577	579	579	573	571	600	627	631
Commercial	3,289	3,293	3,300	3,320	3,318	3,317	3,313	3,336	3,365	3,367
Industrial	102	102	99	98	98	98	98	96	95	95
Government	327	327	278	278	278	280	282	311	334	334
Other	34	27	22	23	22	20	28	27	23	23
Total	35,278	35,264	35,319	35,362	35,402	35,416	35,431	35,430	35,432	35,476

Customer Type	Projected Services 2011	Projected Services 2012	Projected Services 2013	Projected Services 2014	Projected Services 2015	Projected Services 2016	Projected Services 2017	Projected Services 2018	Projected Services 2019	Projected Services 2020
Resident	31,063	31,101	31,138	31,176	31,214	31,251	31,289	31,327	31,365	31,403
Multi- Residential	635	639	643	646	650	654	658	662	667	671
Commercial	3,368	3,370	3,372	3,374	3,375	3,377	3,379	3,380	3,382	3,384
Industrial	95	95	95	96	96	96	96	96	96	96
Government	335	335	336	336	336	337	337	338	338	339
Other	23	23	23	23	23	23	23	23	23	23
Total	35,519	35,563	35,607	35,651	35,695	35,739	35,783	35,827	35,871	35,916

California Water Service Company - Mid-Peninsula District
Water Supply and Demand Analysis and Projections

Worksheet 13

2020's Projections

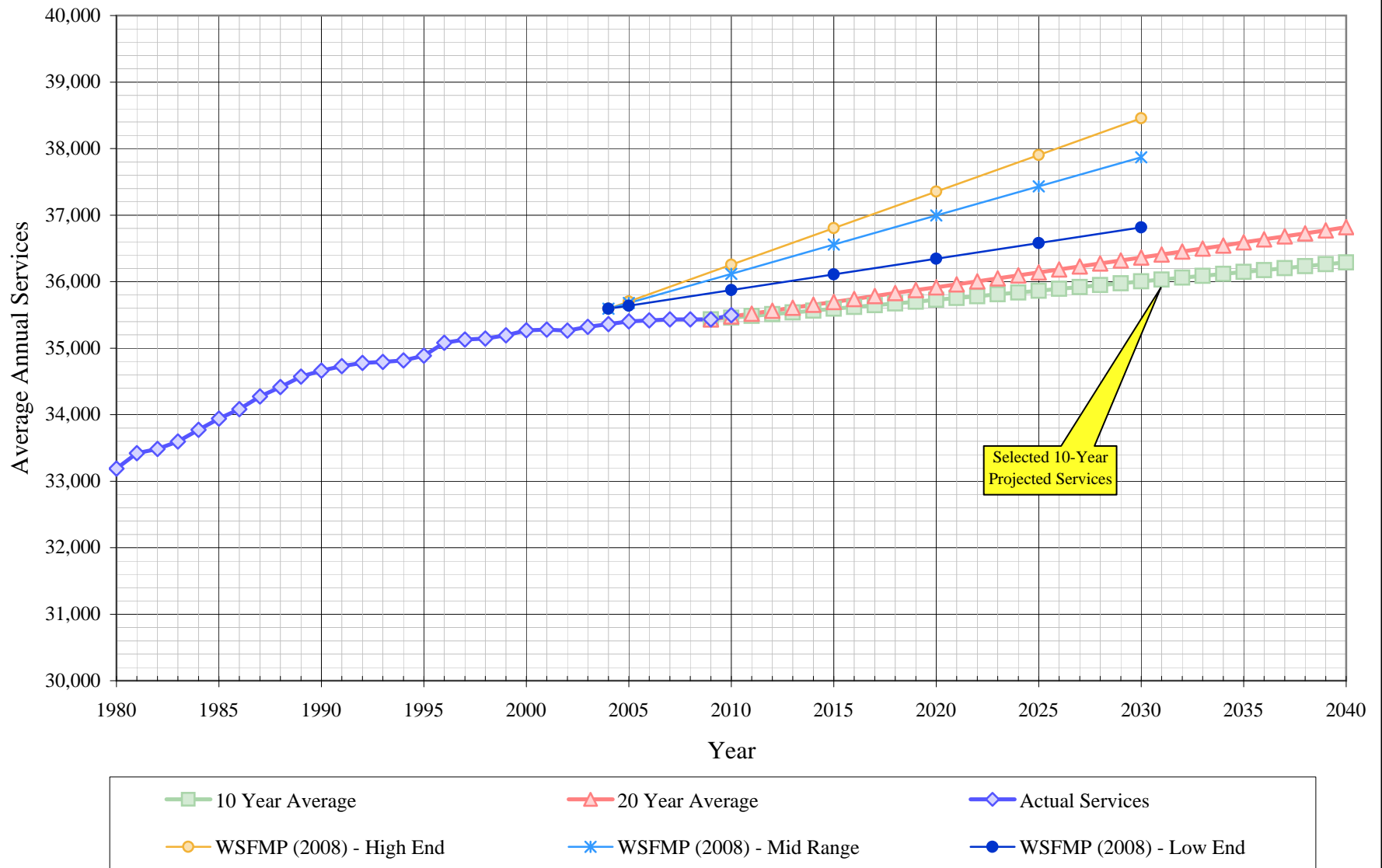
Scenario #4: Based on Maintaining Growth at the 20-Year Average Annual Growth
 10-Year

Customer Type	Projected Services 2021	Projected Services 2022	Projected Services 2023	Projected Services 2024	Projected Services 2025	Projected Services 2026	Projected Services 2027	Projected Services 2028	Projected Services 2029	Projected Services 2030
Resident	31,441	31,479	31,517	31,555	31,593	31,632	31,670	31,708	31,747	31,785
Multi- Residential	675	679	683	687	691	696	700	704	709	713
Commercial	3,386	3,387	3,389	3,391	3,393	3,394	3,396	3,398	3,399	3,401
Industrial	96	97	97	97	97	97	97	97	97	97
Government	339	339	340	340	341	341	341	342	342	343
Other	23	23	23	23	23	23	24	24	24	24
Total	35,960	36,004	36,049	36,094	36,138	36,183	36,228	36,273	36,318	36,363

2030's Projections

Customer Type	Projected Services 2031	Projected Services 2032	Projected Services 2033	Projected Services 2034	Projected Services 2035	Projected Services 2036	Projected Services 2037	Projected Services 2038	Projected Services 2039	Projected Services 2040
Resident	31,823	31,862	31,901	31,939	31,978	32,016	32,055	32,094	32,133	32,172
Multi- Residential	717	722	726	730	735	739	744	749	753	758
Commercial	3,403	3,405	3,406	3,408	3,410	3,412	3,413	3,415	3,417	3,419
Industrial	98	98	98	98	98	98	98	98	99	99
Government	343	343	344	344	345	345	346	346	346	347
Other	24	24	24	24	24	24	24	24	24	24
Total	36,408	36,453	36,498	36,544	36,589	36,635	36,680	36,726	36,772	36,818

Mid-Peninsula District Historical & Projected Services

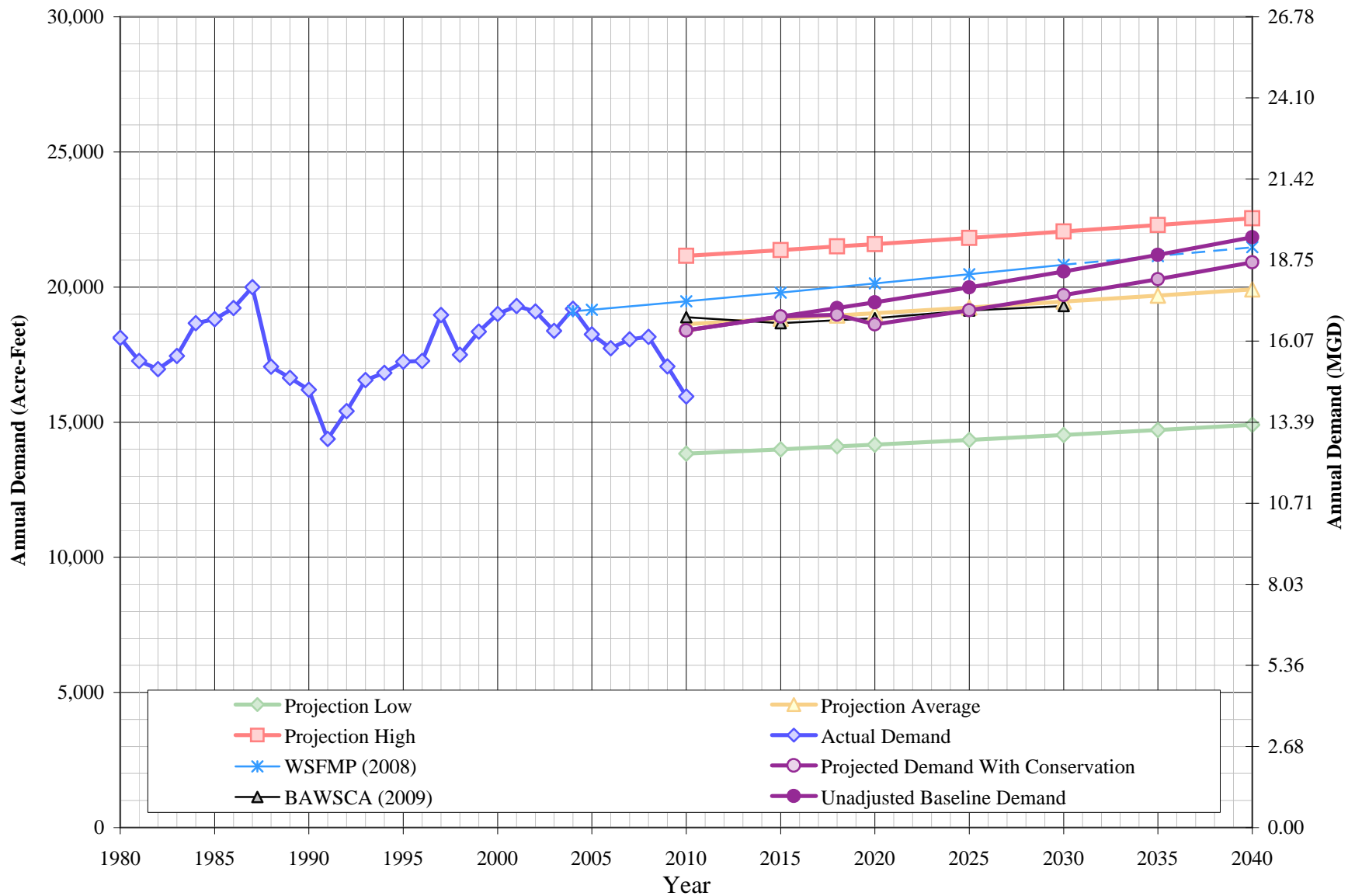


California Water Service Company - Mid-Peninsula District
Water Supply and Demand Analysis and Projections
Projected Annual Average Services

Year	Actual Services	Projected Services	
		10 Year Average	20 Year Average
1980	33,190		
1981	33,421		
1982	33,483		
1983	33,596		
1984	33,773		
1985	33,939		
1986	34,082		
1987	34,273		
1988	34,416		
1989	34,573		
1990	34,662		
1991	34,728		
1992	34,778		
1993	34,793		
1994	34,814		
1995	34,885		
1996	35,079		
1997	35,129		
1998	35,145		
1999	35,194		
2000	35,266		
2001	35,278		
2002	35,264		
2003	35,319		
2004	35,362		
2005	35,402		
2006	35,416		
2007	35,431		
2008	35,430		
2009	35,432	35,432	35,432
2010	35,494	35,458	35,476

Year	Actual Services	Projected Services	
		10 Year Average	20 Year Average
2011		35,484	35,519
2012		35,511	35,563
2013		35,537	35,607
2014		35,564	35,651
2015		35,591	35,695
2016		35,618	35,739
2017		35,645	35,783
2018		35,672	35,827
2019		35,699	35,871
2020		35,726	35,916
2021		35,753	35,960
2022		35,780	36,004
2023		35,808	36,049
2024		35,835	36,094
2025		35,863	36,138
2026		35,891	36,183
2027		35,919	36,228
2028		35,947	36,273
2029		35,975	36,318
2030		36,003	36,363
2031		36,030	36,408
2032		36,059	36,453
2033		36,087	36,498
2034		36,116	36,544
2035		36,144	36,589
2036		36,173	36,635
2037		36,202	36,680
2038		36,231	36,726
2039		36,260	36,772
2040		36,289	36,818

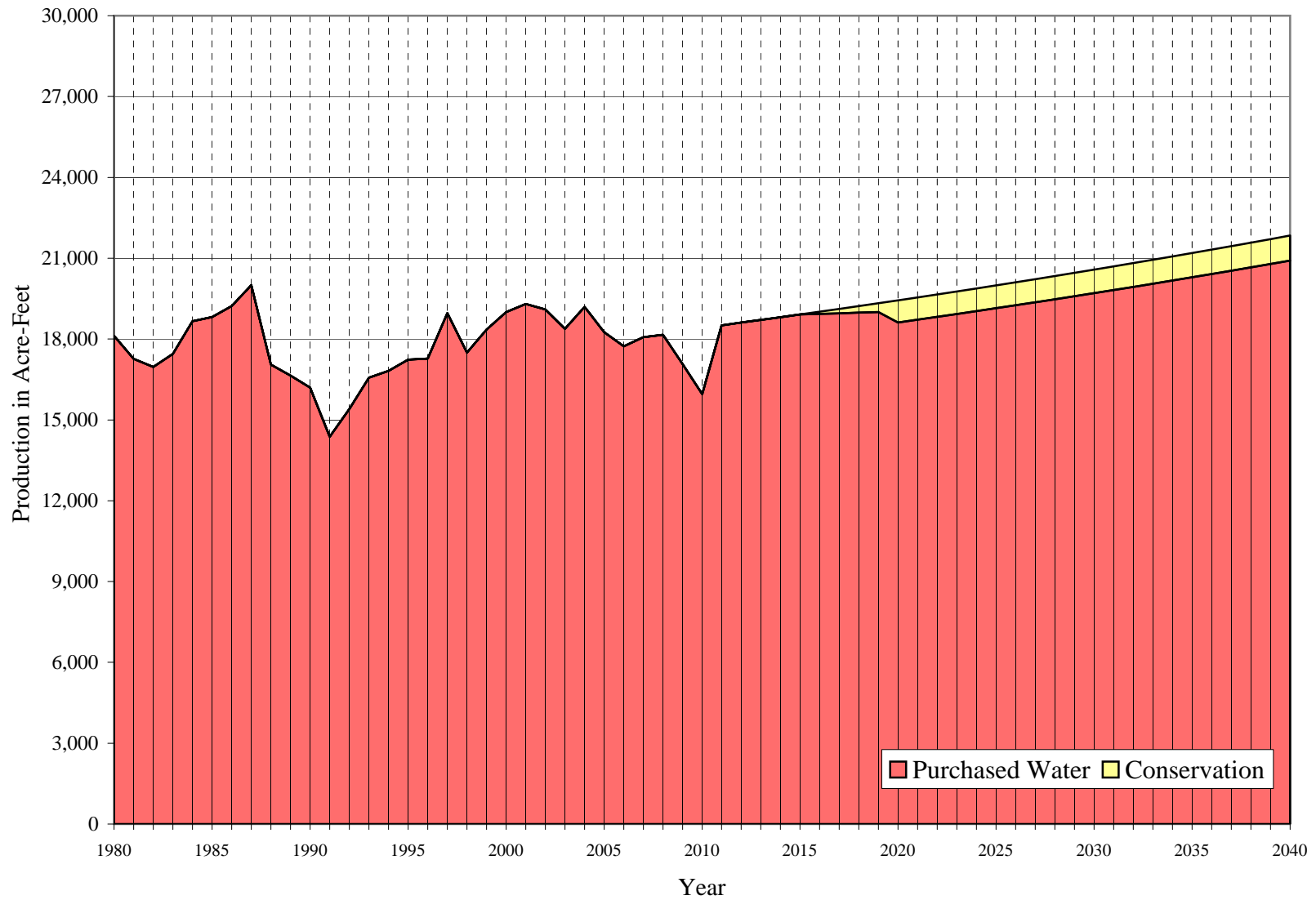
Mid-Peninsula District Historical & Projected Demand



California Water Service Company - Mid-Peninsula District
Water Supply and Demand Analysis and Projections

Projected Demand:		Acre-Feet per Year					MGD				
Year	Actual Demand	Projection			Unadjusted Baseline Demand	Target Demand	Actual Demand	Projected Low Demand	Projected Average Demand	Projected High Demand	Projected Demand With Conservation
		Low	Average	High							
1980	18,117						16.17				
1981	17,266						15.41				
1982	16,961						15.14				
1983	17,452						15.58				
1984	18,660						16.66				
1985	18,815						16.80				
1986	19,222						17.16				
1987	19,998						17.85				
1988	17,052						15.22				
1989	16,640						14.85				
1990	16,195						14.46				
1991	14,376						12.83				
1992	15,406						13.75				
1993	16,563						14.79				
1994	16,822						15.02				
1995	17,240						15.39				
1996	17,271						15.42				
1997	18,966						16.93				
1998	17,500						15.62				
1999	18,353						16.38				
2000	19,004						16.97				
2001	19,300						17.23				
2002	19,095						17.05				
2003	18,383						16.41				
2004	19,197						17.14				
2005	18,253						16.30				
2006	17,735						15.83				
2007	18,068						16.13				
2008	18,159						16.21				
2009	17,068						15.24				
2010	15,956	13,832	18,631	21,153	18,399	18,399	14.24	12.35	16.63	18.88	16.43
2015		13,997	18,829	21,369	18,911	18,911		12.50	16.81	19.08	16.88
2018		14,100	18,950	21,502	19,223	18,979		12.59	16.92	19.20	16.94
2020		14,169	19,033	21,592	19,436	18,613		12.65	16.99	19.28	16.62
2025		14,344	19,243	21,820	19,991	19,143		12.81	17.18	19.48	17.09
2030		14,526	19,460	22,056	20,575	19,703		12.97	17.37	19.69	17.59
2035		14,711	19,683	22,297	21,191	20,293		13.13	17.57	19.91	18.12
2040		14,904	19,913	22,547	21,841	20,915		13.31	17.78	20.13	18.67

Mid-Peninsula District Historical and Projected Distribution of Demand by Source



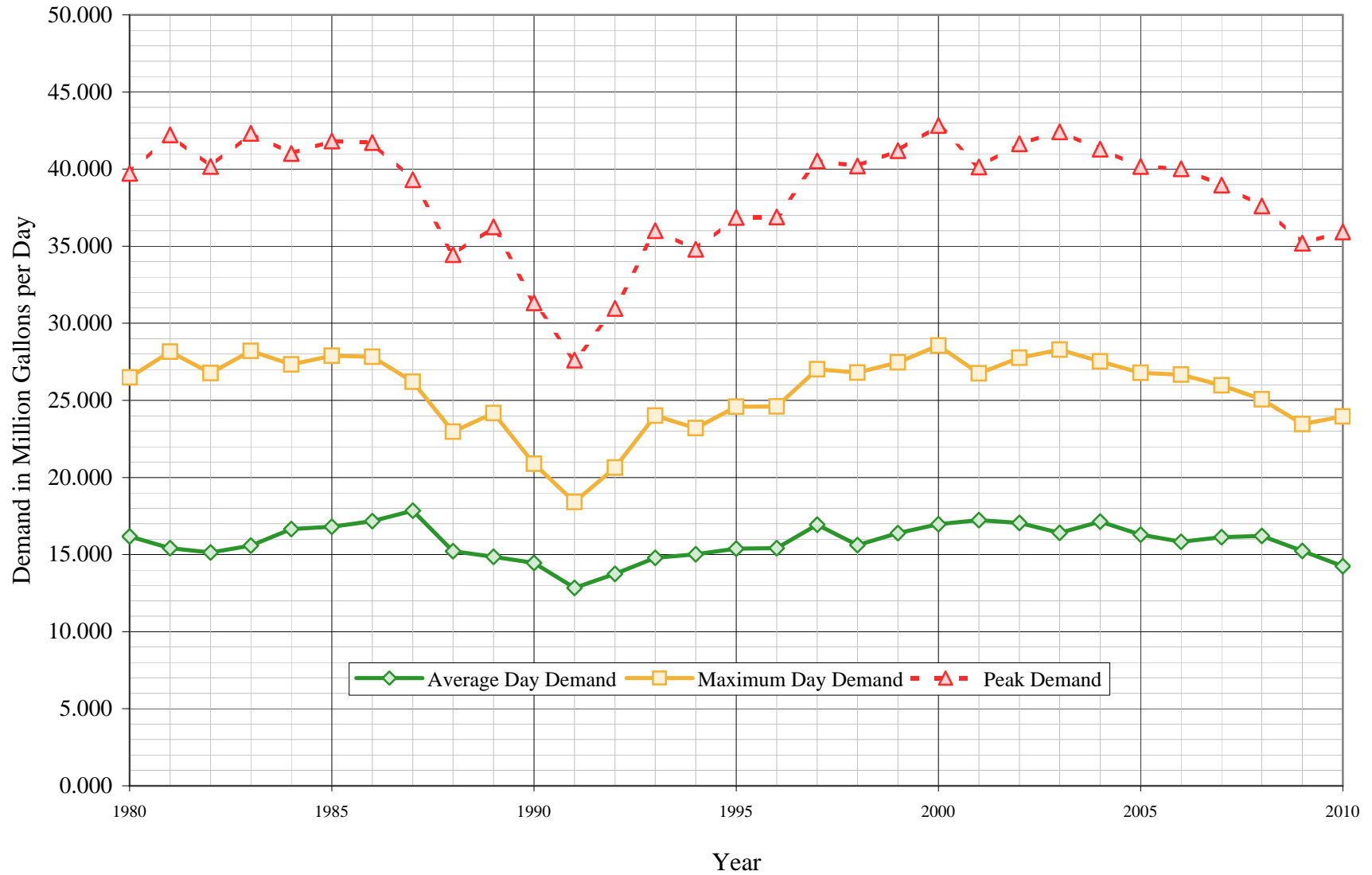
California Water Service Company - Mid-Peninsula District
Water Supply and Demand Analysis and Projections
Historical and Projected Distribution of Demand by Source

Worksheet 17

Year	Purchased Water		Ground Water		Conservation		Total	
	kGal	AFY	kGal	AFY	kGal	AFY	kGal	AFY
1980	5,903,422	18,117	0	0			5,903,422	18,117
1981	5,626,032	17,266	0	0			5,626,032	17,266
1982	5,526,881	16,961	0	0			5,526,881	16,961
1983	5,686,728	17,452	0	0			5,686,728	17,452
1984	6,080,217	18,660	0	0			6,080,217	18,660
1985	6,130,884	18,815	0	0			6,130,884	18,815
1986	6,263,621	19,222	0	0			6,263,621	19,222
1987	6,516,394	19,998	0	0			6,516,394	19,998
1988	5,556,455	17,052	0	0			5,556,455	17,052
1989	5,422,030	16,640	0	0			5,422,030	16,640
1990	5,277,282	16,195	0	0			5,277,282	16,195
1991	4,684,310	14,376	0	0			4,684,310	14,376
1992	5,019,923	15,406	0	0			5,019,923	15,406
1993	5,397,041	16,563	0	0			5,397,041	16,563
1994	5,481,531	16,822	0	0			5,481,531	16,822
1995	5,617,755	17,240	0	0			5,617,755	17,240
1996	5,627,709	17,271	0	0			5,627,709	17,271
1997	6,180,241	18,966	0	0			6,180,241	18,966
1998	5,702,369	17,500	0	0			5,702,369	17,500
1999	5,980,271	18,353	0	0			5,980,271	18,353
2000	6,192,595	19,004	0	0			6,192,595	19,004
2001	6,288,840	19,300	0	0			6,288,840	19,300
2002	6,222,209	19,095	0	0			6,222,209	19,095
2003	5,990,208	18,383	0	0			5,990,208	18,383
2004	6,255,306	19,197	0	0			6,255,306	19,197
2005	5,947,913	18,253	0	0			5,947,913	18,253
2006	5,778,892	17,735	0	0			5,778,892	17,735
2007	5,887,373	18,068	0	0			5,887,386	18,068
2008	5,917,054	18,159	0	0			5,917,039	18,159
2009	5,561,567	17,068	0	0			5,561,568	17,068
2010	5,199,240	15,956	0	0			5,199,253	15,956

Year	Purchased Water		Ground Water		Conservation		Total	
	kGal	AFY	kGal	AFY	kGal	AFY	kGal	AFY
2011	6,031,739	18,511	0	0	0	0	6,031,739	18,511
2012	6,063,841	18,609	0	0	0	0	6,063,841	18,609
2013	6,096,289	18,709	0	0	0	0	6,096,289	18,709
2014	6,129,086	18,809	0	0	0	0	6,129,086	18,809
2015	6,162,236	18,911	0	0	0	0	6,162,236	18,911
2016	6,169,487	18,933	0	0	26,254	81	6,195,742	19,014
2017	6,176,812	18,956	0	0	52,796	162	6,229,608	19,118
2018	6,184,209	18,979	0	0	79,628	244	6,263,837	19,223
2019	6,191,676	19,002	0	0	106,758	328	6,298,434	19,329
2020	6,065,026	18,613	0	0	268,376	824	6,333,402	19,436
2021	6,098,872	18,717	0	0	269,873	828	6,368,745	19,545
2022	6,133,080	18,822	0	0	271,387	833	6,404,467	19,655
2023	6,167,655	18,928	0	0	272,917	838	6,440,572	19,765
2024	6,202,600	19,035	0	0	274,463	842	6,477,063	19,877
2025	6,237,919	19,143	0	0	276,026	847	6,513,945	19,991
2026	6,273,615	19,253	0	0	277,606	852	6,551,221	20,105
2027	6,309,694	19,364	0	0	279,202	857	6,588,896	20,221
2028	6,346,158	19,476	0	0	280,816	862	6,626,974	20,337
2029	6,383,012	19,589	0	0	282,447	867	6,665,458	20,456
2030	6,420,259	19,703	0	0	284,095	872	6,704,354	20,575
2031	6,457,904	19,819	0	0	285,761	877	6,743,665	20,696
2032	6,495,951	19,935	0	0	287,444	882	6,783,395	20,817
2033	6,534,403	20,053	0	0	289,146	887	6,823,548	20,941
2034	6,573,265	20,173	0	0	290,865	893	6,864,130	21,065
2035	6,612,541	20,293	0	0	292,603	898	6,905,144	21,191
2036	6,652,236	20,415	0	0	294,360	903	6,946,595	21,318
2037	6,692,353	20,538	0	0	296,135	909	6,988,488	21,447
2038	6,732,897	20,662	0	0	297,929	914	7,030,825	21,577
2039	6,773,872	20,788	0	0	299,742	920	7,073,614	21,708
2040	6,815,282	20,915	0	0	301,574	925	7,116,857	21,841

Mid-Peninsula District Average Day, Maximum Day, and Peak Demand



California Water Service Company - Mid-Peninsula District

Worksheet 18

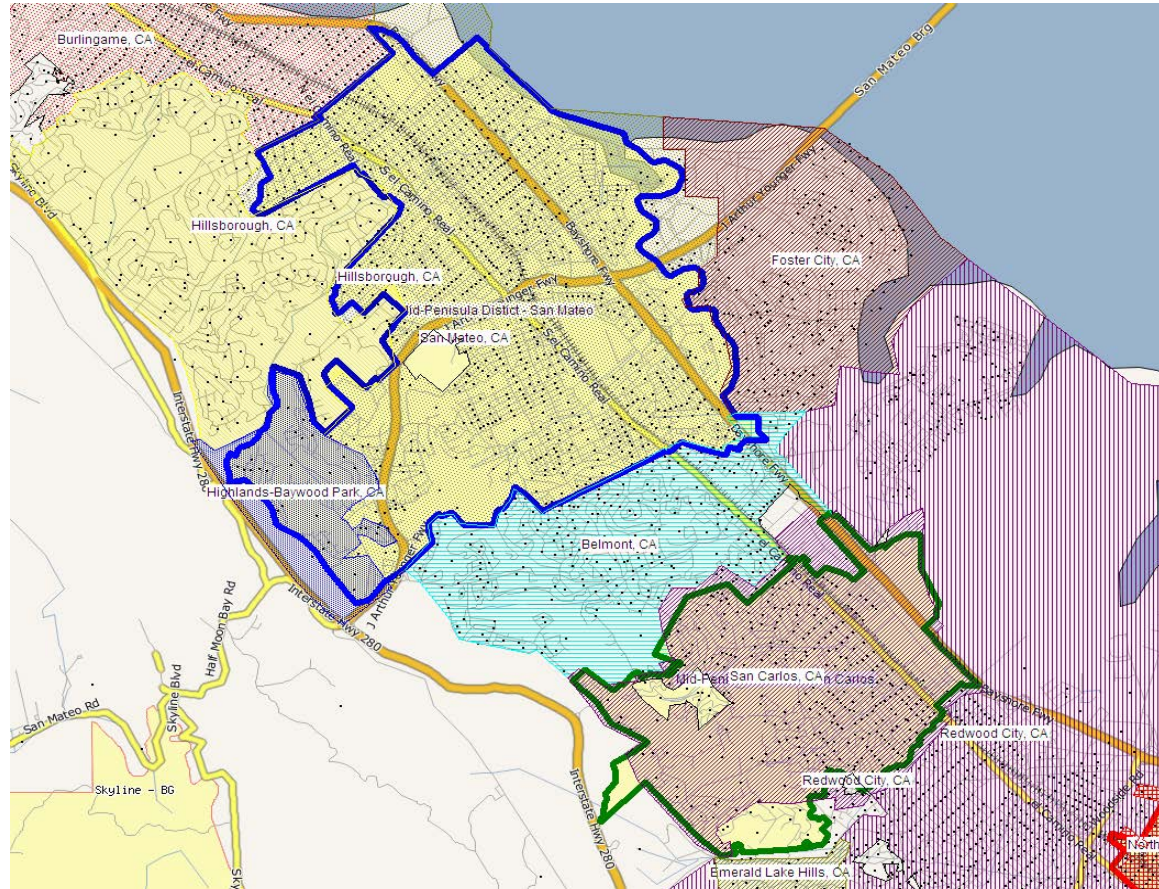
Water Supply and Demand Analysis and Projections

Historical and Projected Average Day, Maximum Day, and Peak Demand

Year	Historical Annual Demand		Average Day Demand		Maximum Day Demand		MDD ADD Ratio	Estimated Peak Hour Demand		PHD MDD Ratio	PHD ADD Ratio	Measured Peak Hour Demand		PHD MDD Ratio
	(AFY)	(MGY)	(MGD)	Per Service (GPD)	(MGD)	Per Service (GPD)		(MGD)	(GPM)			(MGD)	(GPM)	
1980	18,117	5,903	16.174	487	26.480	798	1.64	39.720	27,583	1.50	2.46			
1981	17,266	5,626	15.414	461	28.149	842	1.83	42.224	29,322	1.50	2.74			
1982	16,961	5,527	15.142	452	26.775	800	1.77	40.163	27,891	1.50	2.65			
1983	17,452	5,687	15.580	464	28.207	840	1.81	42.311	29,382	1.50	2.72			
1984	18,660	6,080	16.658	493	27.337	809	1.64	41.006	28,476	1.50	2.46			
1985	18,815	6,131	16.797	495	27.885	822	1.66	41.828	29,047	1.50	2.49			
1986	19,222	6,264	17.161	504	27.818	816	1.62	41.727	28,977	1.50	2.43			
1987	19,998	6,516	17.853	521	26.205	765	1.47	39.308	27,297	1.50	2.20			
1988	17,052	5,556	15.223	442	22.965	667	1.51	34.448	23,922	1.50	2.26			
1989	16,640	5,422	14.855	430	24.173	699	1.63	36.260	25,180	1.50	2.44			
1990	16,195	5,277	14.458	417	20.884	603	1.44	31.326	21,754	1.50	2.17			
1991	14,376	4,684	12.834	370	18.408	530	1.43	27.612	19,175	1.50	2.15			
1992	15,406	5,020	13.753	395	20.638	593	1.50	30.957	21,498	1.50	2.25			
1993	16,563	5,397	14.786	425	24.003	690	1.62	36.005	25,003	1.50	2.43			
1994	16,822	5,482	15.018	431	23.203	666	1.55	34.805	24,170	1.50	2.32			
1995	17,240	5,618	15.391	441	24.579	705	1.60	36.869	25,603	1.50	2.40			
1996	17,271	5,628	15.418	440	24.602	701	1.60	36.903	25,627	1.50	2.39			
1997	18,966	6,180	16.932	482	27.016	769	1.60	40.524	28,142	1.50	2.39			
1998	17,500	5,702	15.623	445	26.799	763	1.72	40.199	27,916	1.50	2.57			
1999	18,353	5,980	16.384	466	27.466	780	1.68	41.199	28,610	1.50	2.51			
2000	19,004	6,193	16.966	481	28.553	810	1.68	42.830	29,743	1.50	2.52			
2001	19,300	6,289	17.230	488	26.759	759	1.55	40.139	27,874	1.50	2.33			
2002	19,095	6,222	17.047	483	27.761	787	1.63	41.642	28,918	1.50	2.44			
2003	18,383	5,990	16.411	465	28.282	801	1.72	42.423	29,460	1.50	2.58			
2004	19,197	6,255	17.138	485	27.532	779	1.61	41.298	28,679	1.50	2.41			
2005	18,253	5,948	16.296	461	26.781	756	1.64	40.172	27,897	1.50	2.47			
2006	17,735	5,779	15.833	447	26.675	753	1.68	40.013	27,786	1.50	2.53			
2007	18,068	5,887	16.130	455	25.972	733	1.61	38.958	27,054	1.50	2.42			
2008	18,159	5,917	16.211	458	25.071	708	1.55	37.607	26,116	1.50	2.32			
2009	17,068	5,562	15.237	430	23.459	662	1.54	35.189	24,436	1.50	2.31			
2010	15,956	5,199	14.245	402	23.952	675	1.68	35.928	24,950	1.50	2.52			
5 year Average (2006-2010)			15.531	438	25.026	706	1.61	37.539	26,069	1.50	2.42			
10 year Average (2001-2010)			16.178	458	26.224	741	1.62	39.337	27,317	1.50	2.43			

California Water Service Company - Mid-Peninsula District
Water Supply and Demand Analysis and Projections

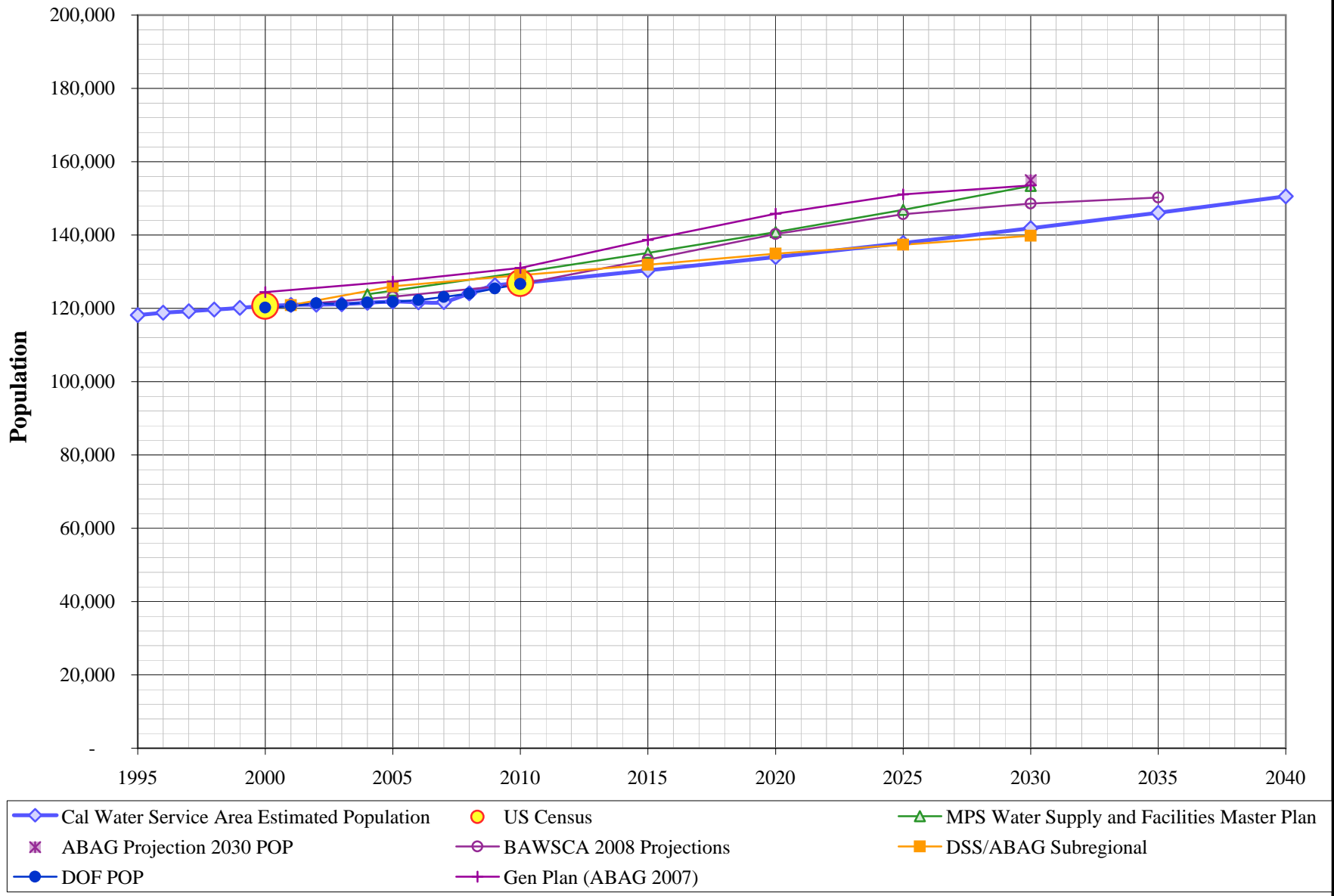
US Census 2010 Tract Map Summary



Year	US Census Data						Persons per Housing Unit	Census Blocks
	Population			Housing Units				
	San Mateo	San Carlos	Total	San Mateo	San Carlos	Total		
2000	93,187	27,445	120,632	37,837	11,629	49,466	2.439	1,130
2010	97,874	28,976	126,850	39,749	12,293	52,042	2.437	1,216
	105.0%	105.6%	105.2%	105.1%	105.7%	105.2%	99.9%	107.6%

MARPLOT disclaimer: The population and housing number given above are only rough estimates. They are based on the US Census Blocks. Although Census Blocks are polygons, MARPLOT uses the centroid, or center point, rather than the entire polygon. If a Census Block centroid is within any of the MARPLOT selected objects, the population and housing numbers for that block are tallied, even if only part of the block is within the selected object. It is possible for a block not be counted if its centroid is not within selected objects, even though part of the block is within the selected objects.

Mid-Peninsula District Population Projection



California Water Service Company - Mid-Peninsula District

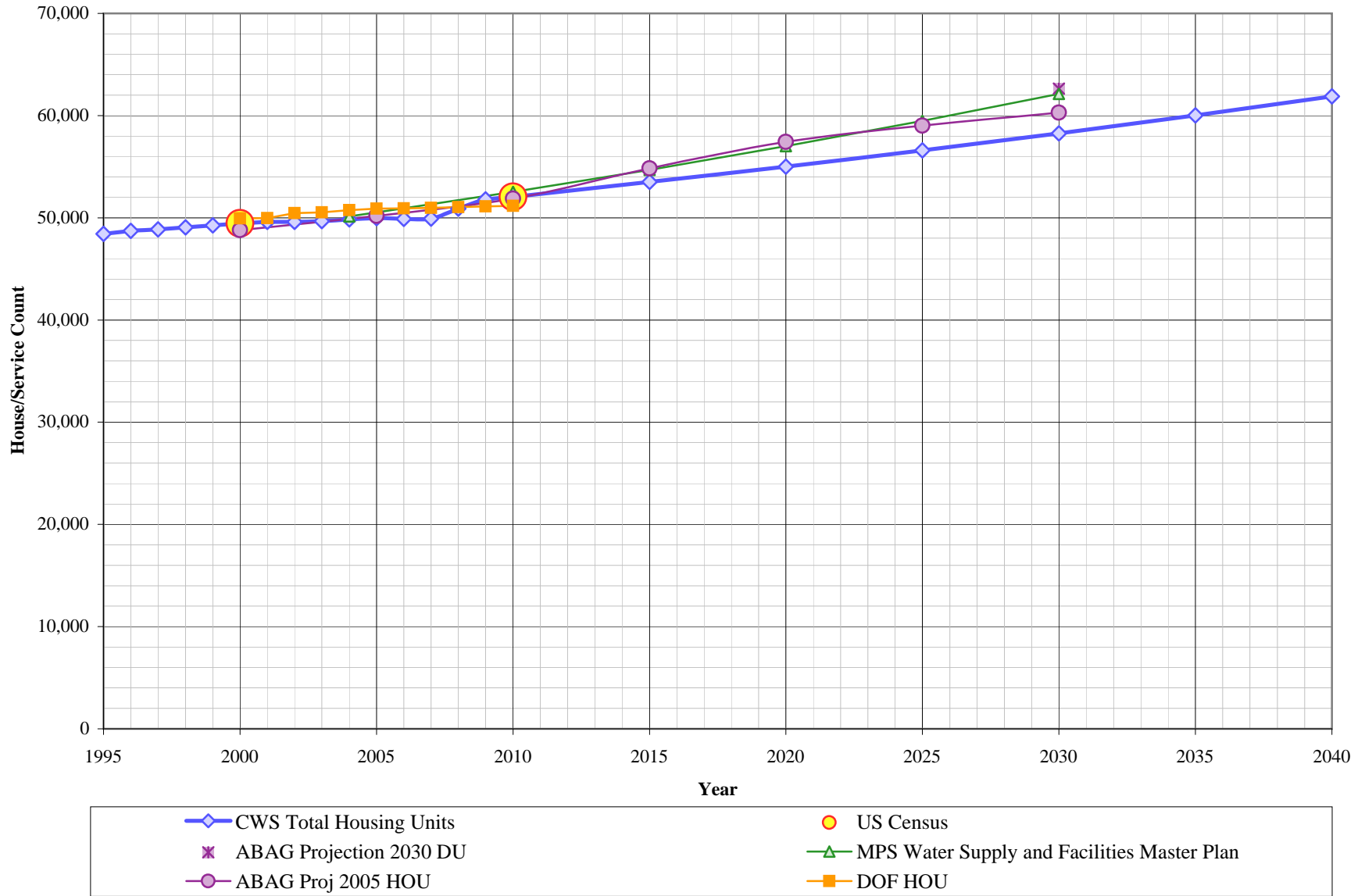
Water Supply and Demand Analysis and Projections

District Communities Served: San Mateo, San Carlos, unincorporated portions of San Mateo County including The Highlands and Palomar Park

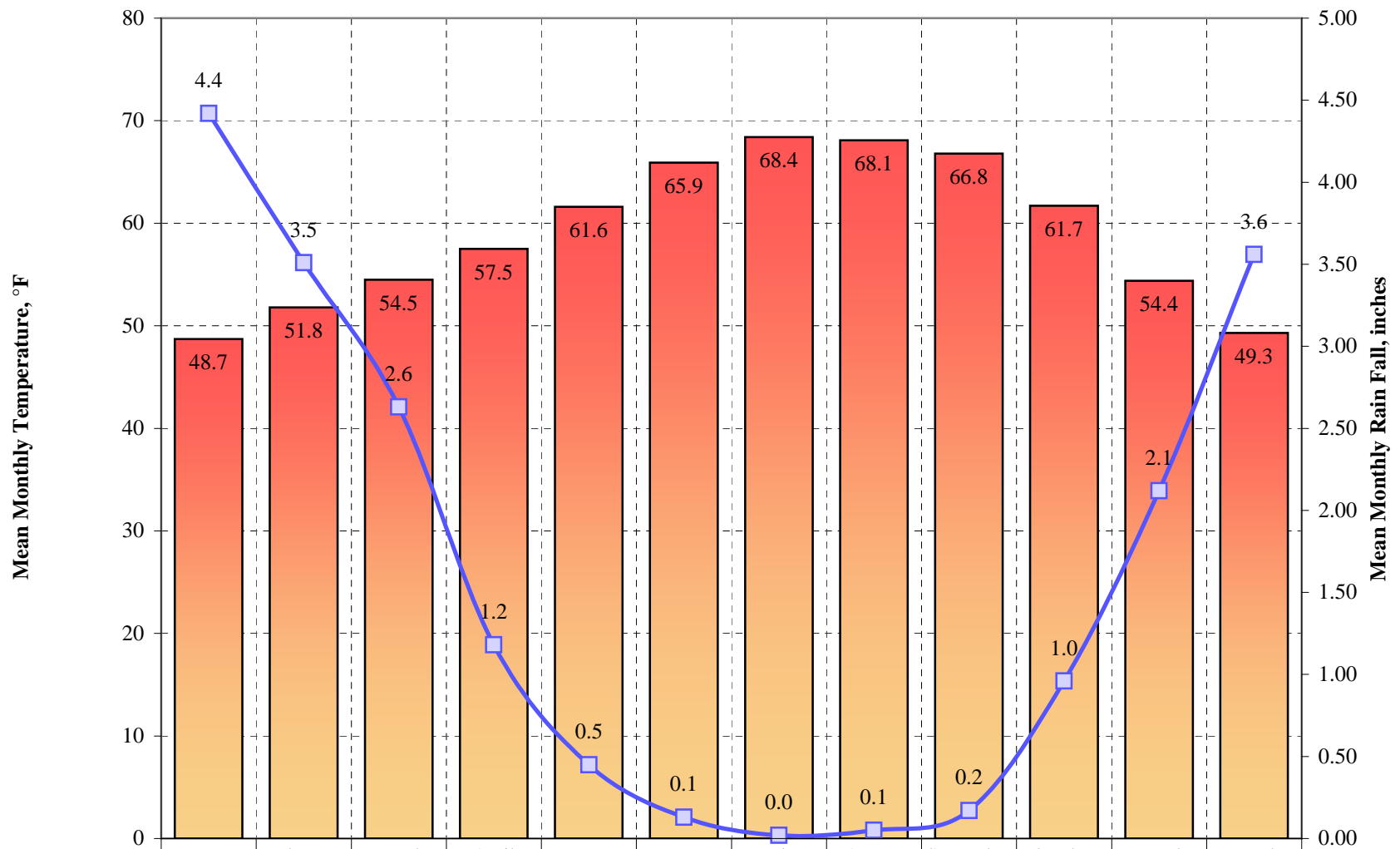
Year	US Census		Persons per Housing Unit	Single Family Residential	Multi Family Residential			Flat Rate Residential
	Population	Housing Units		Services (DU)	Services	Residential Units (DU)	Unit Density	Services (DU)
2000	120,632	49,466	2,439	30,931	582	18,535	31.85	0
2010	126,850	52,042	2,437	31,028	630	21,014	33.36	0
	105.2%	105.2%	99.9%	100.3%	108.2%	113.4%	104.7%	0.0%

Year	Single Family Residential Services (DU)	Multi Family Residential Services	Multi Family Residential Residential Units (DU)	Multi Family Residential Unit Density	Flat Rate Residential Services (DU)	Total Residential Dwelling Units	Persons per Housing Unit	Estimated District Population
1995	30,608	573	17,816	31.1	0.0	48,424	2.439	118,121
1996	30,810	573	17,903	31.2	0.0	48,713	2.439	118,819
1997	30,845	574	18,020	31.4	0.0	48,865	2.439	119,186
1998	30,860	577	18,202	31.5	0.0	49,062	2.439	119,658
1999	30,897	579	18,352	31.7	0.0	49,249	2.439	120,109
2000	30,931	582	18,535	31.8	0.0	49,466	2.439	120,632
2001	30,943	583	18,655	32.0	0.0	49,598	2.439	120,947
2002	30,934	581	18,678	32.1	0.0	49,612	2.438	120,977
2003	31,043	577	18,626	32.3	0.0	49,670	2.438	121,110
2004	31,065	579	18,786	32.5	0.0	49,851	2.438	121,546
2005	31,107	579	18,873	32.6	0.0	49,980	2.438	121,855
2006	31,128	573	18,767	32.8	0.0	49,895	2.438	121,641
2007	31,139	571	18,788	32.9	0.0	49,927	2.438	121,712
2008	31,060	600	19,832	33.1	0.0	50,892	2.438	124,060
2009	30,988	627	20,819	33.2	0.0	51,807	2.438	126,284
2010	31,028	630	21,014	33.4	0.0	52,042	2.437	126,850
2015	31,044	658	22,461	34.1	0.0	53,505	2.437	130,382
2020	31,090	686	23,914	34.9	0.0	55,005	2.436	134,004
2025	31,137	715	25,450	35.6	0.0	56,587	2.436	137,824
2030	31,184	744	27,072	36.4	0.0	58,256	2.435	141,853
2035	31,231	775	28,785	37.1	0.0	60,016	2.434	146,101
2040	31,277	808	30,594	37.9	0.0	61,871	2.434	150,580

Mid-Peninsula District Housing Projections



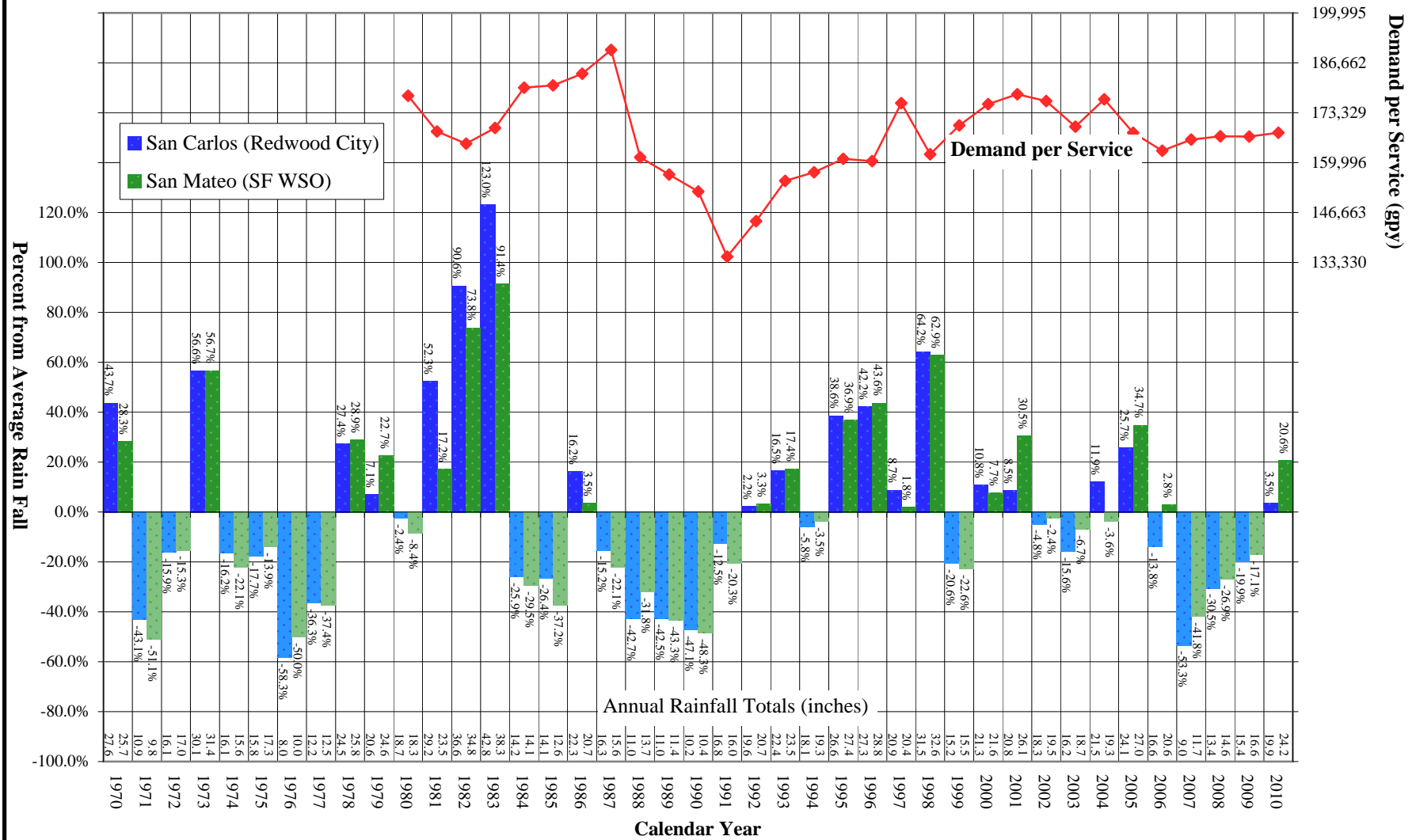
Mid-Peninsula District Average Monthly Temperature and Rainfall



Temperature	48.7	51.8	54.5	57.5	61.6	65.9	68.4	68.1	66.8	61.7	54.4	49.3
Rainfall	4.42	3.51	2.63	1.18	0.45	0.13	0.02	0.05	0.17	0.96	2.12	3.56

Mid-Peninsula District Comparison of Annual Rainfall to Historical Average

Average Annual Rainfall San Carlos (Redwood City) = 19.57 inches
Average Annual Rainfall San Mateo (SF WSO) = 20.17 inches



California Water Service Company - Mid-Peninsula District

Water Supply and Demand Analysis and Projections

Worksheet 20

Temperature & Rainfall History - San Carlos (Redwood City)

Year	Annual Average Temp.	Annual Average Rainfall	Rainfall Percent Variation	Demand per Service (Gal / Yr)	Percent of Average Demand	Year	Annual Average Temp.	Annual Average Rainfall	Rainfall Percent Variation	Demand per Service (Gal / Yr)	Percent of Average Demand
1970	59.6	27.59	43.7%			1995	60.3	26.61	38.6%	161,036	96.5%
1971	57.9	10.93	-43.1%			1996	60.4	27.30	42.2%	160,430	96.2%
1972	59.0	16.14	-15.9%			1997	60.6	20.87	8.7%	175,930	105.4%
1973	59.5	30.06	56.6%			1998	58.5	31.52	64.2%	162,253	97.3%
1974	59.1	16.09	-16.2%			1999	59.0	15.24	-20.6%	169,923	101.8%
1975	57.8	15.81	-17.7%			2000	58.5	21.27	10.8%	175,597	105.2%
1976	59.0	8.01	-58.3%			2001	58.9	20.83	8.5%	178,265	106.8%
1977	59.1	12.23	-36.3%			2002	59.4	18.28	-4.8%	176,444	105.8%
1978	59.9	24.47	27.4%			2003	60.5	16.20	-15.6%	169,603	101.7%
1979	59.7	20.57	7.1%			2004	60.0	21.49	11.9%	176,891	106.0%
1980	60.2	18.74	-2.4%	177,867	106.6%	2005	60.9	24.13	25.7%	168,011	100.7%
1981	61.0	29.24	52.3%	168,338	100.9%	2006	61.3	16.55	-13.8%	163,172	97.8%
1982	58.5	36.59	90.6%	165,065	98.9%	2007	59.4	8.96	-53.3%	166,164	99.6%
1983	61.0	42.82	123.0%	169,268	101.5%	2008	50.0	13.35	-30.5%	167,007	100.1%
1984	60.1	14.22	-25.9%	180,032	107.9%	2009	61.1	15.38	-19.9%	166,946	100.1%
1985	58.3	14.13	-26.4%	180,644	108.3%	2010	58.4	19.87	3.5%	168,011	100.7%
1986	60.0	22.31	16.2%	183,781	110.2%	2011					
1987	59.7	16.28	-15.2%	190,132	114.0%	2012					
1988	59.7	11.00	-42.7%	161,450	96.8%	2013					
1989	58.6	11.04	-42.5%	156,828	94.0%	2014					
1990	58.9	10.16	-47.1%	152,250	91.3%	2015					
1991	58.8	16.80	-12.5%	134,886	80.8%	2016					
1992	60.5	19.62	2.2%	144,342	86.5%	2017					
1993	60.0	22.37	16.5%	155,119	93.0%	2018					
1994	58.2	18.08	-5.8%	157,452	94.4%	2019					

Source: Western Regional Climate Center: <http://www.wrcc.dri.edu/cgi-bin/cliMAIN.pl?ca7339>

Calendar Year	Average Water Year	Normal Water Year	Single-Dry Water Year	Multiple-Dry Water Years			
				1	2	3	4
1997	-	1997	2007	1988	1989	1990	1991
Demand per Service (gal/yr)	166,838	175,930	166,164	161,450	156,828	152,250	134,886
Difference from Average	100.0%	100.0%	94.4%	91.8%	89.1%	86.5%	76.7%

California Water Service Company - Mid-Peninsula District

Water Supply and Demand Analysis and Projections

Worksheet 20A

Temperature & Rainfall History - San Mateo (SF WSO)

Year	Annual Average Temp.	Annual Average Rainfall	Rainfall Percent Variation	Demand per Service (Gal / Yr)	Percent of Average Demand	Year	Annual Average Temp.	Annual Average Rainfall	Rainfall Percent Variation	Demand per Service (Gal / Yr)	Percent of Average Demand
1970	57.6	25.69	28.3%			1995	58.2	27.42	36.9%	161,036	95.8%
1971	55.7	9.80	-51.1%			1996	58.6	28.77	43.6%	160,430	95.5%
1972	56.4	16.97	-15.3%			1997	59.6	20.39	1.8%	175,930	104.7%
1973	56.8	31.38	56.7%			1998	57.3	32.63	62.9%	162,253	96.6%
1974	56.4	15.60	-22.1%			1999	56.6	15.50	-22.6%	169,923	101.1%
1975	55.4	17.25	-13.9%			2000	58.1	21.57	7.7%	175,597	104.5%
1976	56.8	10.02	-50.0%			2001	57.8	26.14	30.5%	178,265	106.1%
1977	56.7	12.54	-37.4%			2002	58.0	19.54	-2.4%	176,444	105.0%
1978	57.3	25.81	28.9%			2003	58.6	18.68	-6.7%	169,603	100.9%
1979	57.6	24.57	22.7%			2004	59.2	19.30	-3.6%	176,891	105.3%
1980	57.1	18.34	-8.4%	177,867	105.9%	2005	58.6	26.99	34.7%	168,011	100.0%
1981	57.7	23.47	17.2%	168,338	100.2%	2006	57.7	20.60	2.8%	163,172	97.1%
1982	55.9	34.81	73.8%	165,065	98.2%	2007	57.5	11.65	-41.8%	166,164	98.9%
1983	58.6	38.34	91.4%	169,268	100.7%	2008	57.6	14.64	-26.9%	167,007	99.4%
1984	58.5	14.13	-29.5%	180,032	107.2%	2009	58.1	16.61	-17.1%	166,946	99.4%
1985	57.0	12.57	-37.2%	180,644	107.5%	2010	58.6	24.15	20.6%	168,011	100.0%
1986	58.3	20.73	3.5%	183,781	109.4%	2011					
1987	58.7	15.60	-22.1%	190,132	113.2%	2012					
1988	58.6	13.67	-31.8%	161,450	96.1%	2013					
1989	57.5	11.35	-43.3%	156,828	93.3%	2014					
1990	57.9	10.35	-48.3%	152,250	90.6%	2015					
1991	57.6	15.97	-20.3%	134,886	80.3%	2016					
1992	59.7	20.69	3.3%	144,342	85.9%	2017					
1993	59.1	23.51	17.4%	155,119	92.3%	2018					
1994	56.9	19.32	-3.5%	157,452	93.7%	2019					

Source: Western Regional Climate Center:

<http://www.wrcc.dri.edu/cgi-bin/cliMAIN.pl?ca7769>

California Water Service Company - Mid-Peninsula District

Water Supply and Demand Analysis and Projections

Temperature Data

Station:(047339) REDWOOD CITY															
From Year=1906 To Year=2010															
	Monthly Averages			Daily Extremes				Monthly Extremes				Max. Temp.		Min. Temp.	
	Max.	Min.	Mean	High	Date	Low	Date	Highest Mean	Year	Lowest Mean	Year	>= 90 F	<= 32 F	<= 32 F	<= 0 F
	F	F	F	F	dd/yyyy or yyyymmdd	F	dd/yyyy or yyyymmdd	F	-	F	-	# Days	# Days	# Days	# Days
January	58	39.3	48.7	78	13/2009	16	11/1949	54.6	2003	40.7	1949	0	0	5.1	0
February	61.7	41.9	51.8	80	14/1977	25	6/1989	57.2	1963	46.7	1933	0	0	1.8	0
March	65.5	43.5	54.5	86	31/1966	29	2/1953	59.8	2004	49.7	1982	0	0	0.3	0
April	70	45.1	57.5	97	30/2007	31	3/1931	62	1966	51.1	1967	0.3	0	0.1	0
May	74.6	48.7	61.6	102	29/1950	36	8/1933	67.1	2001	55.2	1933	1.7	0	0	0
June	79.6	52.2	65.9	109	15/1961	37	6/1945	72.2	1981	60.4	1933	4.1	0	0	0
July	82.3	54.6	68.4	110	14/1972	40	3/1979	72.9	2006	64.6	1955	4.3	0	0	0
August	81.9	54.4	68.1	105	7/1983	42	30/1939	70.6	1983	65.1	1955	3.9	0	0	0
September	80.7	52.9	66.8	106	13/1971	38	26/1980	72.2	1984	63.2	1933	4.4	0	0	0
October	74.5	48.9	61.7	104	2/1980	33	31/1935	65.4	1980	57	1931	0.9	0	0	0
November	65.4	43.4	54.4	87	2/1967	23	23/1931	59.6	1950	49.6	1994	0	0	0.8	0
December	58.7	40	49.3	76	12/1958	18	12/1932	53.5	1983	43.8	1932	0	0	4.3	0
Annual	71.1	47.1	59.1	110	19720714	16	19490111	61	1981	56.4	1933	19.6	0	12.4	0

	Jan	Feb	Mar	Apr	May	Jun	Jul	Aug	Sep	Oct	Nov	Dec	Total
Monthly Average ETo Report	1.86	2.24	3.72	4.80	5.27	5.70	5.58	5.27	4.20	3.41	2.40	1.86	46.31

1) California Irrigation Management Information System (CIMIS), <http://www.cimis.water.ca.gov/cimis/welcome.jsp>, EvapoTranspiration (Eto) Zones Map, Zone 3

California Water Service Company - Mid-Peninsula District

Water Supply and Demand Analysis and Projections

Worksheet 20A

Temperature Data

Station:(047769) SAN FRANCISCO WSO AP															
From Year=1948 To Year=2010															
	Monthly Averages			Daily Extremes				Monthly Extremes				Max. Temp.		Min. Temp.	
	Max.	Min.	Mean	High	Date	Low	Date	Highest Mean	Year	Lowest Mean	Year	>= 90 F	<= 32 F	<= 32 F	<= 0 F
	F	F	F	F	dd/yyyy or yyyymmdd	F	dd/yyyy or yyyymmdd	F	-	F	-	# Days	# Days	# Days	# Days
January	55.8	42.5	49.1	72	13/2009	26	5/1949	53.8	2003	42.4	1949	0	0	1	0
February	59.1	45	52.1	77	26/1986	30	14/1949	56.3	1986	46.9	1949	0	0	0.2	0
March	61.2	46.2	53.7	85	25/1952	31	3/1966	59.4	2004	49.7	1954	0	0	0	0
April	63.8	47.7	55.8	92	29/1981	36	27/1955	60.7	1989	50.5	1975	0.1	0	0	0
May	66.8	50.3	58.5	97	27/1984	39	3/1950	64.4	1997	55.2	1965	0.4	0	0	0
June	70	52.7	61.4	106	14/1961	43	1/1954	65.2	1958	57.8	1952	0.8	0	0	0
July	71.4	54.1	62.7	105	17/1988	44	29/1951	65.8	1992	58.7	1951	0.5	0	0	0
August	72.1	55	63.6	100	1/1993	45	30/1952	67.3	1993	59.7	1955	0.3	0	0	0
September	73.5	54.9	64.2	103	14/1971	41	30/1950	69.7	1984	60.1	1948	1.4	0	0	0
October	70.2	52	61.1	99	5/1987	37	20/1949	65.4	1992	57	1971	0.3	0	0	0
November	62.9	47.4	55.2	85	1/1967	31	30/1954	59.8	1950	49.9	1994	0	0	0	0
December	56.4	43.3	49.8	75	2/1958	24	9/1972	55.2	1958	44.9	1965	0	0	0.7	0
Annual	65.3	49.3	57.3	106	19610614	24	19721209	60.1	1958	54.7	1949	3.9	0	2	0

	Jan	Feb	Mar	Apr	May	Jun	Jul	Aug	Sep	Oct	Nov	Dec	Total
Monthly Average ETo Report	1.86	2.24	3.72	4.80	5.27	5.70	5.58	5.27	4.20	3.41	2.40	1.86	46.31

1) California Irrigation Management Information System (CIMIS), <http://www.cimis.water.ca.gov/cimis/welcome.jsp>, EvapoTranspiration (Eto) Zones Map, Zone 3

California Water Service Company - Mid-Peninsula District
Water Supply and Demand Analysis and Projections

Worksheet 20

Precipitaion Data

Station:(047339) REDWOOD CITY														
From Year=1906 To Year=2010														
	Precipitation											Total Snowfall		
	Mean	High	Year	Low	Year	1 Day Max.		>= 0.01 in.	>= 0.10 in.	>= 0.50 in.	>= 1.00 in.	Mean	High	Year
	in.	in.	-	in.	-	in.	dd/yyyy or yyyymmdd	# Days	# Days	# Days	# Days	in.	in.	-
January	4.42	13.66	1916	0.27	1976	4.8	21/1967	11	7	3	1	0	0	1933
February	3.51	12.42	1998	0.04	1953	2.99	13/1987	9	7	3	1	0	0	1932
March	2.63	9.2	1983	0	1934	3.28	30/1940	9	6	2	0	0	0	1936
April	1.18	6.37	1958	0	1916	2.54	2/1958	5	3	1	0	0	0	1936
May	0.45	2.76	1957	0	1935	1.33	18/1957	3	1	0	0	0	0	1933
June	0.13	1.01	1912	0	1913	1	23/1912	1	0	0	0	0	0	1935
July	0.02	0.3	1966	0	1915	0.3	30/1966	0	0	0	0	0	0	1935
August	0.05	0.9	1976	0	1913	0.81	20/1997	0	0	0	0	0	0	1934
September	0.17	3.07	1959	0	1914	3.05	18/1959	1	0	0	0	0	0	1935
October	0.96	6.39	1962	0	1913	4.88	13/1962	3	2	1	0	0	0	1931
November	2.12	7.6	1997	0	1933	3.16	19/1946	7	4	1	1	0	0	1944
December	3.56	14.16	1955	0	1989	4	23/1955	9	6	2	1	0	0	1938
Annual	19.2	42.82	1983	8.01	1976	4.88	19621013	59	37	13	4	0	0	1946

California Water Service Company - Mid-Peninsula District
Water Supply and Demand Analysis and Projections

Worksheet 20A

Precipitaion Data

Station:(047769) SAN FRANCISCO WSO AP														
From Year=1948 To Year=2010														
Precipitation											Total Snowfall			
	Mean	High	Year	Low	Year	1 Day Max.	>=	>=	>=	>=	Mean	High	Year	
	in.	in.	-	in.	-	in.	dd/yyyy or yyyymmdd	# Days	# Days	# Days	# Days	in.	in.	-
January	4.4	11.26	1993	0.24	1991	5.59	4/1982	11	8	3	1	0	1.5	1962
February	3.61	13.64	1998	0	1953	2.92	2/1998	10	7	3	1	0	0	1949
March	2.8	9.01	1958	0.05	1988	1.99	8/1978	10	6	2	0	0	0	1949
April	1.37	6.36	1958	0	1949	2.3	2/1958	6	3	1	0	0	0	1949
May	0.39	3.81	1957	0	1962	1.53	20/1957	3	1	0	0	0	0	1949
June	0.11	0.86	1967	0	1949	0.81	2/1967	1	0	0	0	0	0	1949
July	0.02	0.35	1977	0	1948	0.35	2/1977	0	0	0	0	0	0	1948
August	0.04	0.66	1976	0	1948	0.56	19/1997	1	0	0	0	0	0	1948
September	0.18	2.3	1959	0	1951	2.29	18/1959	1	0	0	0	0	0	1948
October	0.99	7.3	1962	0	1959	2.64	13/2009	3	2	1	0	0	0	1948
November	2.33	7.94	1973	0	1959	2.39	30/1973	8	4	2	1	0	0	1948
December	3.78	12.3	1955	0.01	1989	3.16	11/1995	10	7	3	1	0	0	1948
Annual	20.03	38.34	1983	9.2	1953	5.59	19820104	65	39	14	5	0	1.5	1962

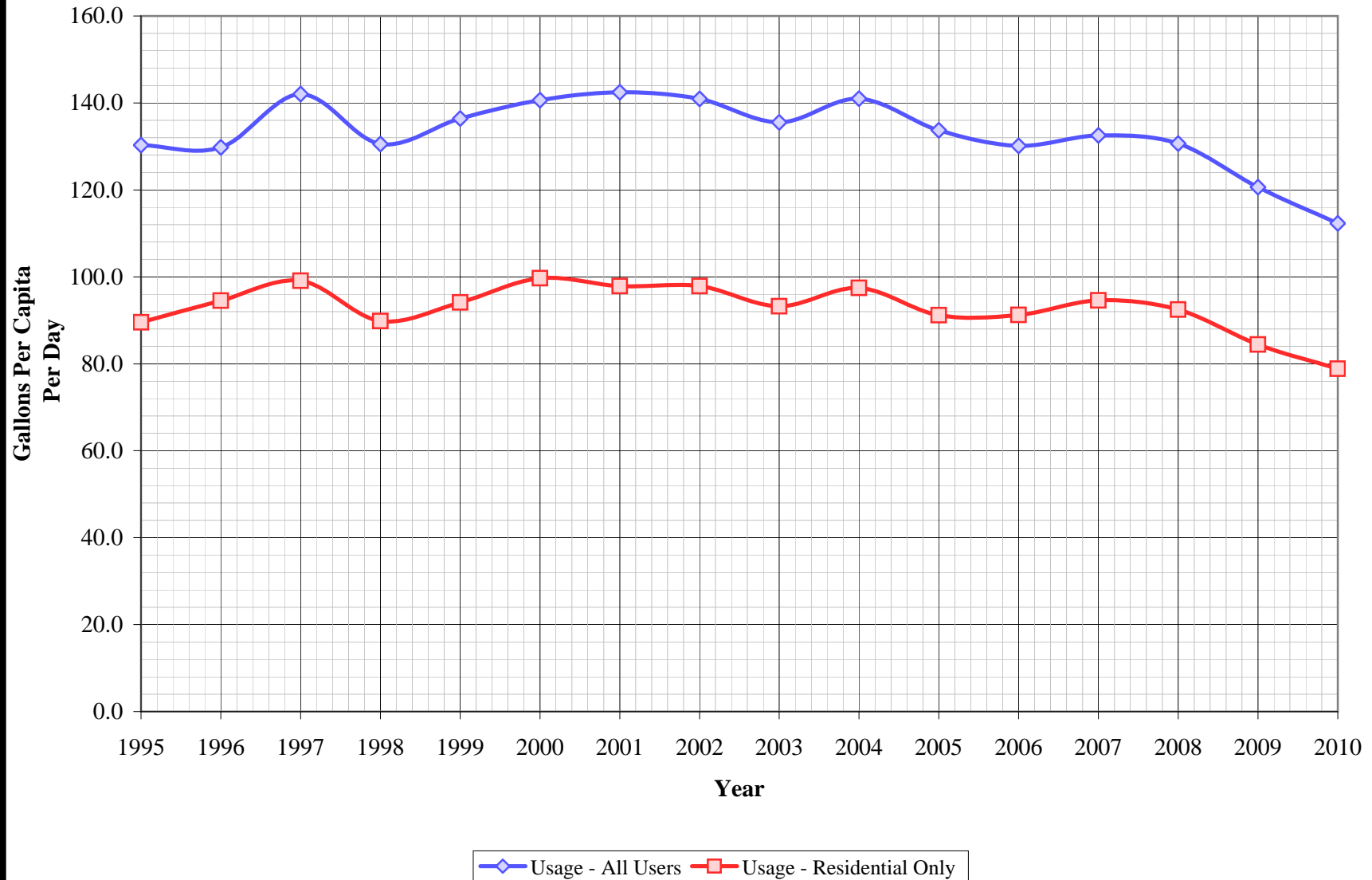
PAGE LEFT BLANK INTENTIONALLY

**California Water Service Company - Mid-Peninsula District
Water Supply and Demand Analysis and Projections**

Groundwater Production Facilities

District does not have groundwater production facilities

Mid-Peninsula District Per Capita Consumption



California Water Service Company - Mid-Peninsula District
Water Supply and Demand Analysis and Projections

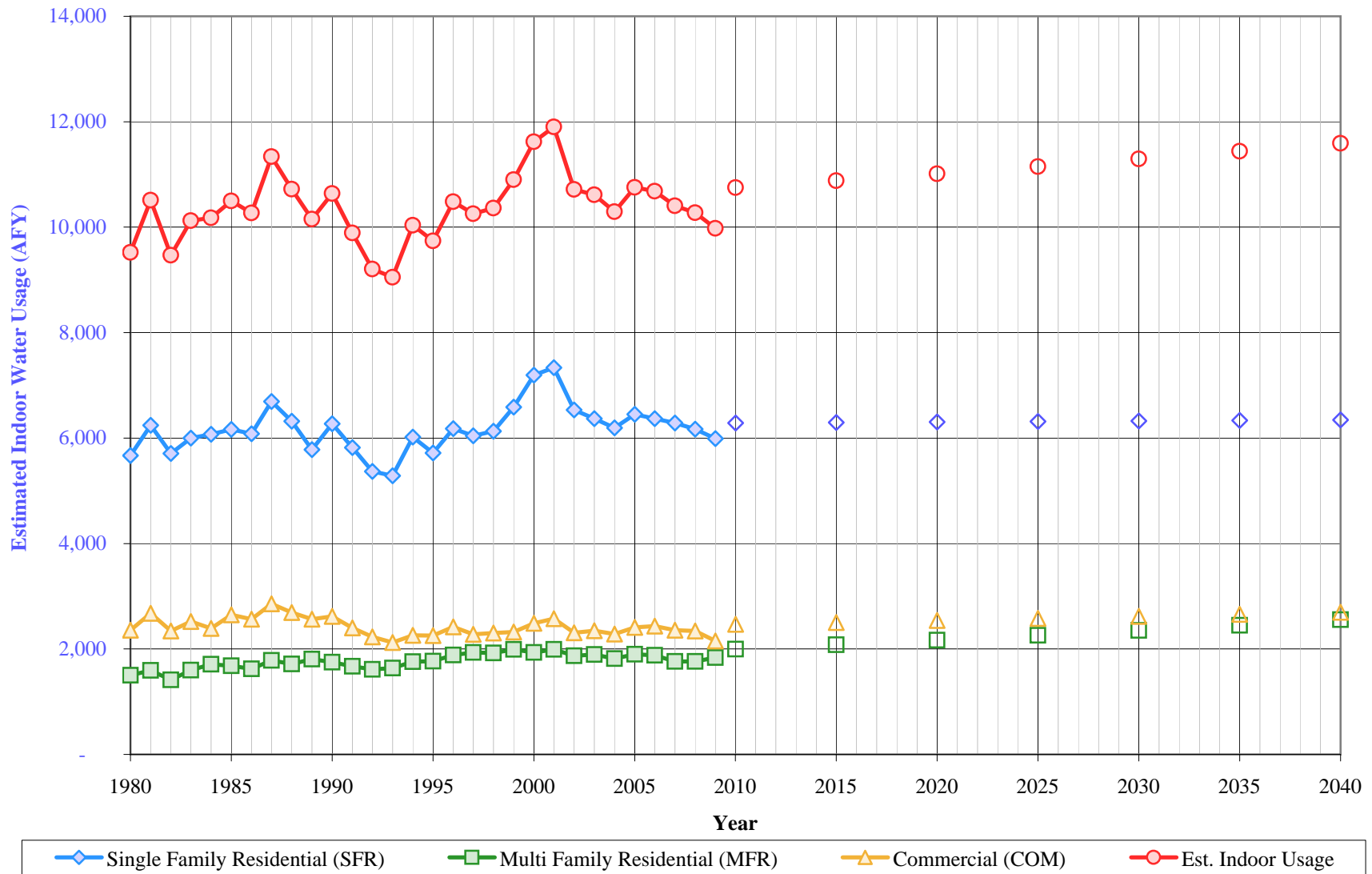
Per Capita Water Demand Calculation

Year	Usage - All Users			Usage - Residential Only		
	AFY	MGY	Gallons Per Capita Per Day	AFY	MGY	Gallons Per Capita Per Day
1995	17,240	5,618	130.3	11,847	3,860	89.5
1996	17,271	5,628	129.8	12,580	4,099	94.5
1997	18,966	6,180	142.1	13,232	4,312	99.1
1998	17,500	5,702	130.6	12,038	3,923	89.8
1999	18,353	5,980	136.4	12,659	4,125	94.1
2000	19,004	6,193	140.6	13,473	4,390	99.7
2001	19,300	6,289	142.5	13,262	4,321	97.9
2002	19,095	6,222	140.9	13,258	4,320	97.8
2003	18,383	5,990	135.5	12,652	4,123	93.3
2004	19,197	6,255	141.0	13,266	4,323	97.4
2005	18,253	5,948	133.7	12,447	4,056	91.2
2006	17,735	5,779	130.2	12,434	4,052	91.3
2007	18,068	5,887	132.5	12,893	4,201	94.6
2008	18,159	5,917	130.7	12,847	4,186	92.4
2009	17,068	5,562	120.7	11,941	3,891	84.4
2010	15,956	5,199	112.3	11,205	3,651	78.9
5 Yr. Avg.	17,397	5,669	125.3	12,264	3,996	88.3
10 Yr. Avg.	18,121	5,905	132.0	12,621	4,112	91.9

Five year average is from years 2006 through 2010.

Ten year average is from years 2001 through 2010.

Mid-Peninsula District Estimated Indoor Water Usage



**California Water Service Company - Mid-Peninsula District
Water Supply and Demand Analysis and Projections**

Estimated Indoor/Outdoor Water Usage

Year	Single Family Residential (SFR)				Multi Family Residential (MFR)				Commercial (COM)				Est. Indoor Usage
	Single Family Residential January Usage (CCF)	Single Family Residential Indoor Use (Annualized 90% of January Total)			Multi Family Residential January Usage (CCF)	Multi Family Residential Indoor Use (Annualized 90% of January Total)			Commercial (CCF)	Commercial Indoor Use (Annualized 90% of January Total)			
		AFY	GPD/Service	%		AFY	GPD/Service	%		AFY	GPD/Service	%	
1980	228,607	5,668	174.6	61%	60,446	1,499	2,724.9	83%	95,051	2,357	639.1	72%	9,523
1981	251,692	6,240	190.8	65%	64,224	1,592	2,871.8	84%	107,987	2,677	724.5	83%	10,510
1982	230,284	5,710	174.3	62%	57,063	1,415	2,496.1	78%	94,435	2,341	633.2	76%	9,466
1983	242,034	6,001	182.6	64%	64,509	1,599	2,799.7	82%	101,695	2,521	679.2	79%	10,122
1984	244,921	6,072	183.7	59%	68,994	1,711	2,994.4	83%	96,486	2,392	642.5	69%	10,175
1985	248,715	6,166	185.7	60%	67,827	1,682	2,865.1	82%	106,859	2,649	709.0	76%	10,498
1986	245,348	6,083	182.4	58%	65,417	1,622	2,732.0	78%	103,436	2,565	686.1	72%	10,269
1987	270,083	6,696	199.5	63%	71,972	1,784	2,977.6	84%	115,263	2,858	764.8	77%	11,338
1988	254,849	6,319	187.4	71%	69,196	1,716	2,794.9	85%	108,451	2,689	719.3	78%	10,723
1989	233,240	5,783	170.7	65%	72,837	1,806	2,899.6	88%	103,496	2,566	687.7	77%	10,155
1990	252,974	6,272	184.5	73%	70,591	1,750	2,790.1	86%	105,580	2,618	702.4	79%	10,640
1991	234,762	5,821	170.8	79%	67,302	1,669	2,641.3	88%	96,847	2,401	646.6	83%	9,890
1992	216,424	5,366	157.2	65%	64,958	1,611	2,544.8	81%	89,983	2,231	600.8	75%	9,207
1993	213,218	5,286	154.8	59%	66,075	1,638	2,561.3	78%	85,653	2,124	573.8	69%	9,048
1994	242,819	6,020	176.0	65%	70,963	1,759	2,750.8	81%	91,030	2,257	613.9	72%	10,037
1995	230,635	5,718	166.8	60%	71,226	1,766	2,751.4	79%	90,902	2,254	614.2	70%	9,738
1996	249,231	6,179	179.0	61%	75,980	1,884	2,935.0	79%	97,559	2,419	661.6	73%	10,482
1997	243,808	6,045	175.0	56%	77,903	1,931	3,004.0	80%	91,831	2,277	621.4	67%	10,253
1998	247,281	6,131	177.4	63%	77,609	1,924	2,977.1	83%	92,940	2,304	629.7	73%	10,359
1999	265,748	6,589	190.4	64%	80,274	1,990	3,068.7	84%	93,685	2,323	634.7	71%	10,902
2000	290,267	7,197	207.7	65%	77,929	1,932	2,963.7	79%	100,372	2,489	675.5	72%	11,617
2001	295,868	7,336	211.6	67%	80,399	1,993	3,052.4	84%	103,846	2,575	698.9	75%	11,904
2002	263,588	6,535	188.6	60%	75,462	1,871	2,874.8	82%	93,125	2,309	625.9	69%	10,715
2003	256,933	6,370	183.2	61%	76,461	1,896	2,934.8	84%	94,692	2,348	635.1	72%	10,614
2004	249,883	6,195	178.0	56%	73,298	1,817	2,802.5	81%	92,061	2,283	613.8	66%	10,295
2005	260,211	6,452	185.2	63%	76,530	1,897	2,926.0	85%	97,105	2,408	647.7	71%	10,757
2006	256,780	6,366	182.6	62%	75,777	1,879	2,927.2	86%	98,222	2,435	655.4	71%	10,680
2007	253,560	6,287	180.2	59%	71,056	1,762	2,754.4	79%	95,088	2,358	635.3	67%	10,406
2008	248,816	6,169	177.3	58%	71,167	1,764	2,625.4	78%	94,347	2,339	626.0	69%	10,273
2009	241,632	5,991	172.6	62%	73,985	1,834	2,611.8	82%	86,793	2,152	570.9	73%	9,977
2010	-	6,285	181.0	63%	-	1,998	2,821.8	82%	-	2,466	652.3	73%	10,750
2015	-	6,295	181.0	63%	-	2,081	2,821.8	82%	-	2,503	652.3	73%	10,879
2020	-	6,304	181.0	63%	-	2,168	2,821.8	82%	-	2,540	652.3	73%	11,012
2025	-	6,314	181.0	63%	-	2,258	2,821.8	82%	-	2,578	652.3	73%	11,150
2030	-	6,323	181.0	63%	-	2,353	2,821.8	82%	-	2,616	652.3	73%	11,292
2035	-	6,333	181.0	63%	-	2,451	2,821.8	82%	-	2,655	652.3	73%	11,438
2040	-	6,342	181.0	63%	-	2,553	2,821.8	82%	-	2,695	652.3	73%	11,590

California Water Service Company - Mid-Peninsula District

Water Supply and Demand Analysis and Projections

Comparison of Projected Demand and Conservation Savings Between SBx7-7 Compliance Targets and Actual Proposed Programs

Year	SBx7-7 Compliance Target (gpcd)	Anticipated GPCD with Proposed Programs*	Estimated Population	Undadjusted Baseline Demand (AFY)	SBx7-7 Compliance Target Demand (AFY)	Anticipated Demand with Proposed Programs (AFY)	Compliance Target Savings Requirement (AFY)	Savings Due to Proposed Programs (AFY)
2005-2009 Average	129	129	123,111	17,856	17,856	17,856	0	0
2010	129	129	126,850	18,399	18,399	18,399	0	0
2011	129	127	127,621	18,511	18,511	18,155	0	356
2012	129	126	128,300	18,609	18,609	18,108	0	501
2013	129	125	128,987	18,709	18,709	18,061	0	648
2014	129	122	129,681	18,809	18,809	17,722	0	1,088
2015	129	120	130,382	18,911	18,911	17,526	0	1,386
2016	129	120	131,091	19,014	18,933	17,621	81	1,393
2017	128	120	131,808	19,118	18,956	17,717	162	1,401
2018	128	120	132,532	19,223	18,979	17,815	244	1,408
2019	127	120	133,264	19,329	19,002	17,913	328	1,416
2020	124	120	134,004	19,436	18,613	18,012	824	1,424
2021	124	120	134,752	19,545	18,717	18,113	828	1,432
2022	124	120	135,508	19,655	18,822	18,215	833	1,440
2023	124	120	136,271	19,765	18,928	18,317	838	1,448
2024	124	120	137,044	19,877	19,035	18,421	842	1,456
2025	124	120	137,824	19,991	19,143	18,526	847	1,465
2026	124	120	138,613	20,105	19,253	18,632	852	1,473
2027	124	120	139,410	20,221	19,364	18,739	857	1,481
2028	124	120	140,215	20,337	19,476	18,847	862	1,490
2029	124	120	141,030	20,456	19,589	18,957	867	1,499
2030	124	120	141,853	20,575	19,703	19,067	872	1,507
2031	124	120	142,684	20,696	19,819	19,179	877	1,516
2032	124	120	143,525	20,817	19,935	19,292	882	1,525
2033	124	120	144,375	20,941	20,053	19,406	887	1,534
2034	124	120	145,233	21,065	20,173	19,522	893	1,543
2035	124	120	146,101	21,191	20,293	19,638	898	1,553
2036	124	120	146,978	21,318	20,415	19,756	903	1,562
2037	124	120	147,864	21,447	20,538	19,876	909	1,571
2038	124	120	148,760	21,577	20,662	19,996	914	1,581
2039	124	120	149,666	21,708	20,788	20,118	920	1,590
2040	124	120	150,580	21,841	20,915	20,241	925	1,600

*Note: The district is projected to achieve its district-specific 2015 and 2020 SBx7-7 compliance target in 2015 through a combination of passive and active savings. For the purpose of this analysis it is assumed that GPCD will remain flat from 2015 through 2040.