

Water Resources Planning Department

Water Supply / Demand Analysis and Projections
for
Dominguez District

2010

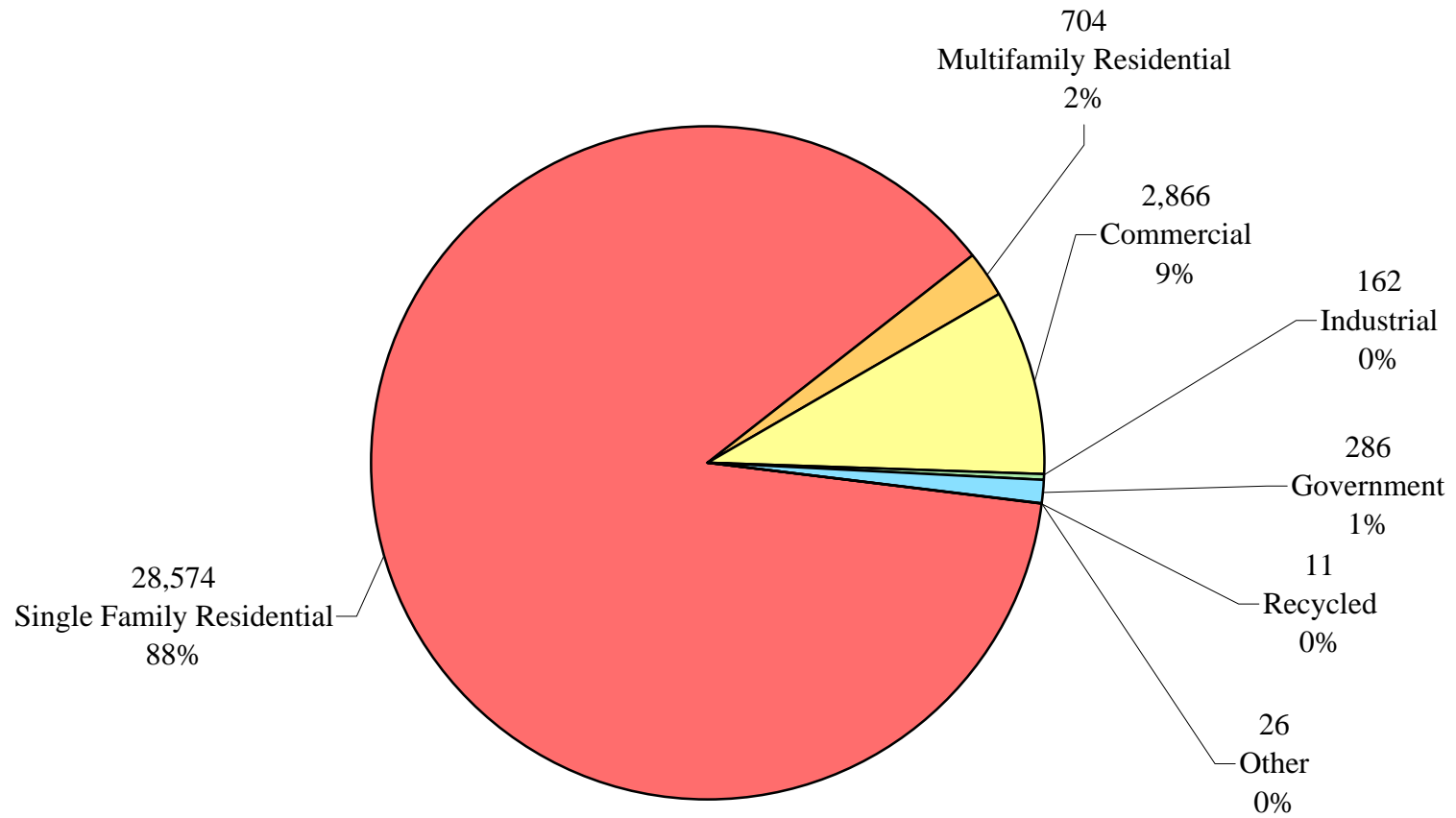


Table of Contents for Worksheets

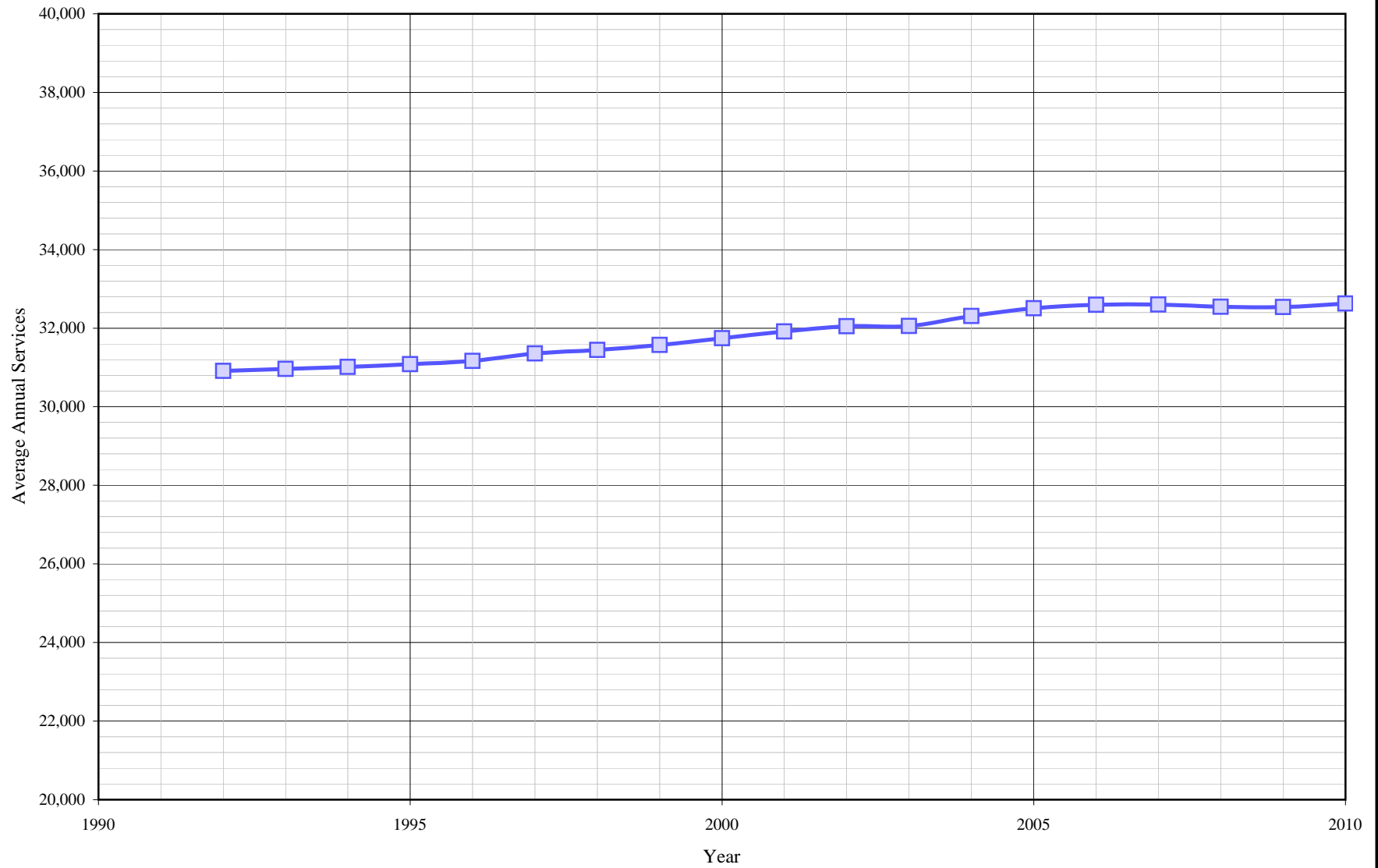
Worksheet	Title
1	Annual Services
2	Service Growth Percentage
3	District Sales (ccf)
4	District Sales (AF)
5	Demand per Service (Gallons/Service/Year)
6	Demand per Service (Gallons per Day)
7	Percentage Change in Annual Demand
8	Percentage of Total Sales
9	Percentage of Total Demand
10	Demand Scenario 1 (Low Demand Projection)
11	Demand Scenario 2 (Average Demand Projection)
12	Demand Scenario 3 (High Demand Projection)
13	Demand Scenario 4 (Alternate Service Projection)
14	Not used
15	Actual & Projected Annual Average Services
16	Actual & Projected Demand in Acre-Feet
17	Projected Annual Supply by Source
18	Historical and Projected Average Day, Maximum Day, and Peak Demands
19	Population as of the 2000 Average Annual Services
20	Temperature & Rainfall History
21	Groundwater Facilities (if available)
22	Per Capita Water Demand Calculation
23	Indoor/Outdoor Water Usage
24	SB-7 Compliance Demand Worksheet

Dominguez District

Distribution of Services (2010)



Dominguez District Historical Annual Services



California Water Service Company - Dominguez District
Water Supply and Demand Analysis and Projections
Annual Services

Year	Residential	Multi-Residential	Multi-Res. units	Commercial	Industrial	Government	Recycled	Other	Total	Annual Change
1990										
1991										
1992	26,873	860	-	2,800	132	216	0	31	30,912	
1993	26,908	868	-	2,810	133	217	0	26	30,962	50
1994	26,957	865	-	2,807	133	221	0	29	31,012	50
1995	27,038	864	-	2,796	131	223	0	29	31,081	69
1996	27,115	864	-	2,796	130	227	0	31	31,163	82
1997	27,291	875	-	2,797	130	233	0	28	31,354	191
1998	27,351	888	-	2,794	129	244	0	37	31,443	89
1999	27,436	903	-	2,809	128	244	0	51	31,571	128
2000	27,561	919	1,838	2,816	133	245	2	67	31,743	172
2001	27,668	936	1,872	2,876	132	249	4	50	31,915	172
2002	27,713	942	1,881	2,936	137	264	4	52	32,048	133
2003	27,725	930	1,873	2,941	144	261	8	45	32,054	6
2004	27,965	926	1,866	2,956	159	264	10	31	32,311	257
2005	28,136	920	1,865	2,979	160	264	10	37	32,506	195
2006	28,210	912	1,865	2,996	166	265	11	32	32,592	86
2007	28,220	910	1,865	2,998	165	270	11	27	32,601	9
2008	28,334	802	1,865	2,937	163	279	11	20	32,546	-55
2009	28,495	696	1,865	2,863	160	288	11	26	32,539	-7
2010	28,574	704		2,866	162	286	11	26	32,629	90
5 Yr. Avg.	28,279	848	1,865	2,955	163	273	11	28	32,557	46
10 Yr. Avg.	28,003	889	1,866	2,930	152	265	8	39	32,286	97

Five year average = 2005 through 2009.

Ten year average = 2000 through 2009.

California Water Service Company - Dominguez District
Water Supply and Demand Analysis and Projections
Service Growth Percentage

Year	Residential	Multi-Residential	Multi-Res. units	Commercial	Industrial	Government	Recycled Water	Other	Total
1991									
1992									
1993	0.13%	0.93%	-	0.36%	0.76%	0.46%	-	-16.13%	0.16%
1994	0.18%	-0.35%	-	-0.11%	0.00%	1.84%	-	11.54%	0.16%
1995	0.30%	-0.12%	-	-0.39%	-1.50%	0.90%	-	0.00%	0.22%
1996	0.28%	0.00%	-	0.00%	-0.76%	1.79%	-	6.90%	0.26%
1997	0.65%	1.27%	-	0.04%	0.00%	2.64%	-	-9.68%	0.61%
1998	0.22%	1.49%	-	-0.11%	-0.77%	4.72%	-	32.14%	0.28%
1999	0.31%	1.69%	-	0.54%	-0.78%	0.00%	-	37.84%	0.41%
2000	0.46%	1.77%	-	0.25%	3.91%	0.41%	-	31.37%	0.54%
2001	0.39%	1.85%	1.85%	2.13%	-0.75%	1.63%	100.00%	-25.37%	0.54%
2002	0.16%	0.64%	0.48%	2.09%	3.79%	6.02%	0.00%	4.00%	0.42%
2003	0.04%	-1.27%	-0.43%	0.17%	5.11%	-1.14%	100.00%	-13.46%	0.02%
2004	0.87%	-0.43%	-0.37%	0.51%	10.42%	1.15%	25.00%	-31.11%	0.80%
2005	0.61%	-0.65%	-0.05%	0.78%	0.63%	0.00%	0.00%	19.35%	0.60%
2006	0.26%	-0.87%	0.00%	0.57%	3.75%	0.38%	10.00%	-13.51%	0.26%
2007	0.04%	-0.22%	0.00%	0.07%	-0.60%	1.89%	0.00%	-15.63%	0.03%
2008	0.40%	-11.87%	0.00%	-2.03%	-1.21%	3.33%	0.00%	-25.93%	-0.17%
2009	0.57%	-13.22%	0.00%	-2.52%	-1.84%	3.23%	0.00%	30.00%	0.04%
2010	0.28%	1.15%	-100.00%	0.10%	1.25%	-0.69%	0.00%	0.00%	0.21%
5 Yr. Avg.	0.38%	-5.37%	-0.01%	-0.63%	0.15%	1.77%	2.00%	-1.14%	0.15%
10 Yr. Avg.	0.38%	-2.43%	0.16%	0.20%	2.32%	1.69%	26.11%	-4.03%	0.31%

Five year average = 2005 through 2009.

Ten year average = 2000 through 2009.

California Water Service Company - Dominguez District

Worksheet 3

Water Supply and Demand Analysis and Projections

Sales(ccf)

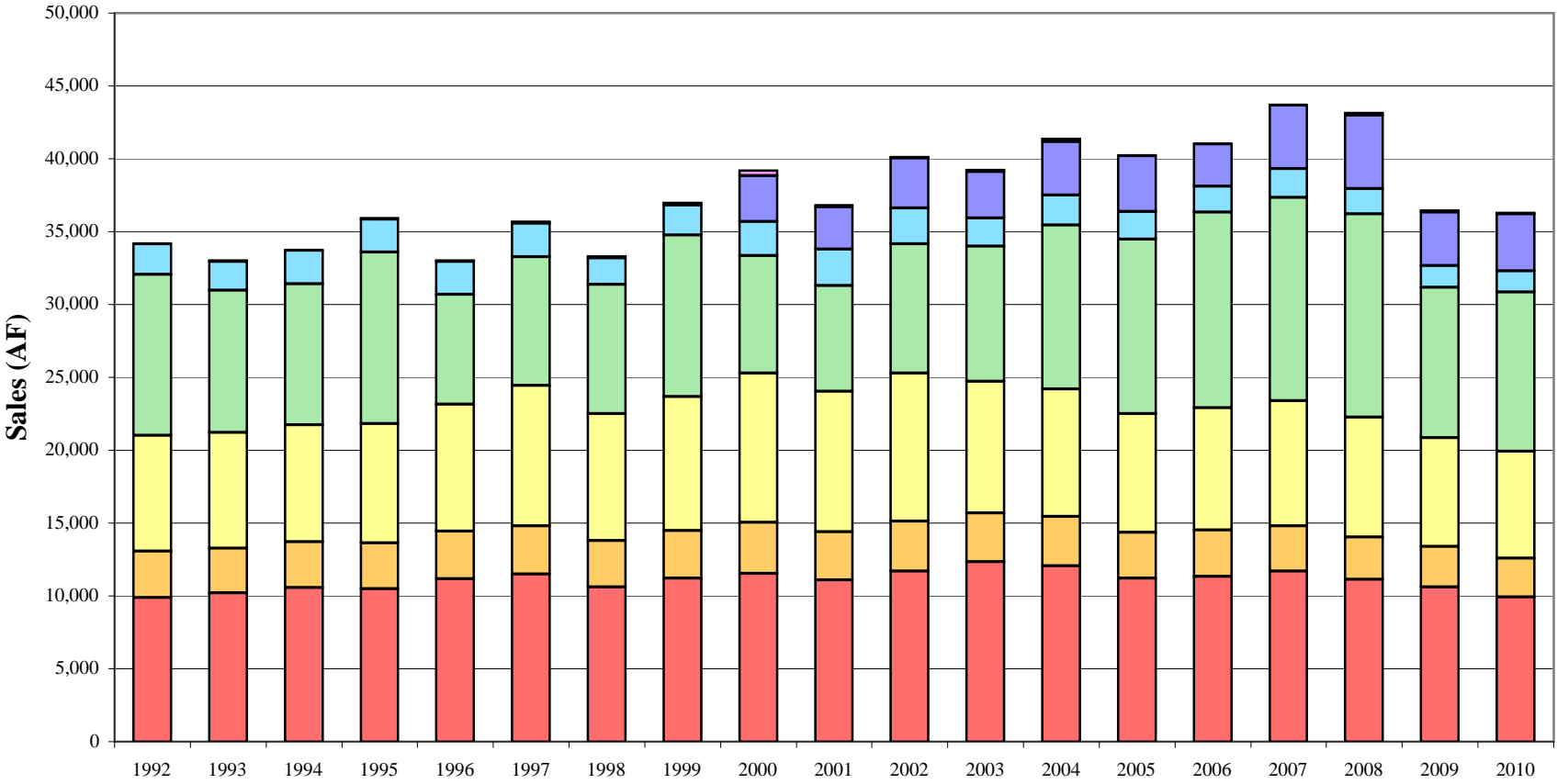
Year	Multi-							Unaccounted Water	Total(ccf) Sales	Total(ccf) Demand	Total(kgal) Demand
	Residential	Residential	Commercial	Industrial	Government	Recycled	Other				
1990											
1991											
1992	4,307,703	1,387,220	3,455,973	4,808,492	910,776		26,846	-272,950	14,897,010	14,624,060	10,939,557
1993	4,441,177	1,329,263	3,467,965	4,256,613	861,400		22,716	225,926	14,379,134	14,605,060	10,925,344
1994	4,602,778	1,363,924	3,507,917	4,205,008	1,009,044		16,903	1,017,790	14,705,574	15,723,364	11,761,894
1995	4,572,582	1,357,460	3,580,880	5,114,371	983,069		40,161	249,742	15,648,523	15,898,265	11,892,729
1996	4,865,740	1,415,407	3,796,661	3,292,829	973,644		41,353	44,525	14,385,634	14,430,159	10,794,509
1997	5,002,492	1,440,708	4,201,554	3,848,369	994,589		56,285	143,767	15,543,997	15,687,764	11,735,263
1998	4,625,843	1,387,444	3,789,270	3,862,659	798,663		51,602	324,979	14,515,481	14,840,460	11,101,436
1999	4,876,694	1,427,121	4,005,769	4,825,173	900,669		75,458	-305,920	16,110,884	15,804,964	11,822,935
2000	5,019,692	1,527,560	4,467,044	3,504,984	1,027,065	1,364,231	156,547	86,660	17,067,123	17,153,783	12,831,922
2001	4,837,262	1,437,663	4,186,438	3,164,048	1,094,631	1,268,625	46,845	735,813	16,035,512	16,771,325	12,545,823
2002	5,090,878	1,488,727	4,434,643	3,856,052	1,073,558	1,502,436	34,663	266,077	17,480,957	17,747,034	13,275,704
2003	5,369,648	1,467,441	3,921,344	4,046,026	848,679	1,384,181	57,684	834,626	17,095,003	17,929,629	13,412,295
2004	5,243,579	1,481,023	3,812,406	4,904,605	897,364	1,589,468	89,211	432,650	18,017,656	18,450,306	13,801,788
2005	4,877,070	1,382,610	3,544,268	5,219,370	813,085	1,679,943	19,259	35,273	17,535,605	17,570,878	13,143,930
2006	4,940,311	1,377,274	3,663,063	5,852,193	760,597	1,268,453	11,693	-249,868	17,873,584	17,623,716	13,183,456
2007	5,091,617	1,362,538	3,739,927	6,069,809	865,065	1,901,681	12,314	-322,849	19,042,951	18,720,102	14,003,610
2008	4,843,376	1,262,014	3,584,611	6,074,731	763,298	2,196,898	75,659	-1,152,671	18,800,587	17,647,916	13,201,559
2009	4,624,478	1,209,299	3,244,452	4,502,377	647,236	1,589,468	53,063	1,006,800	15,870,373	16,877,173	12,625,003
2010	4,328,580	1,159,315	3,183,433	4,770,935	626,328	1,711,021	29,353	1,761,913	15,808,965	17,570,878	13,143,930
5 Yr. Avg.	4,875,370	1,318,747	3,555,264	5,543,696	769,856	1,727,289	34,398	-136,663	17,824,620	17,687,957	13,231,512
10 Yr. Avg.	4,993,791	1,399,615	3,859,820	4,719,420	879,058	1,574,538	55,694	167,251	17,481,935	17,649,186	13,202,509

Five year average = 2005 through 2009.

Ten year average = 2000 through 2009.

14,097,944 1,316,281

Dominguez District Historical Sales



■ Single Family Residential
 ■ Multifamily Residential
 ■ Commercial
 ■ Industrial
 ■ Government
 ■ Recycled
 ■ Other

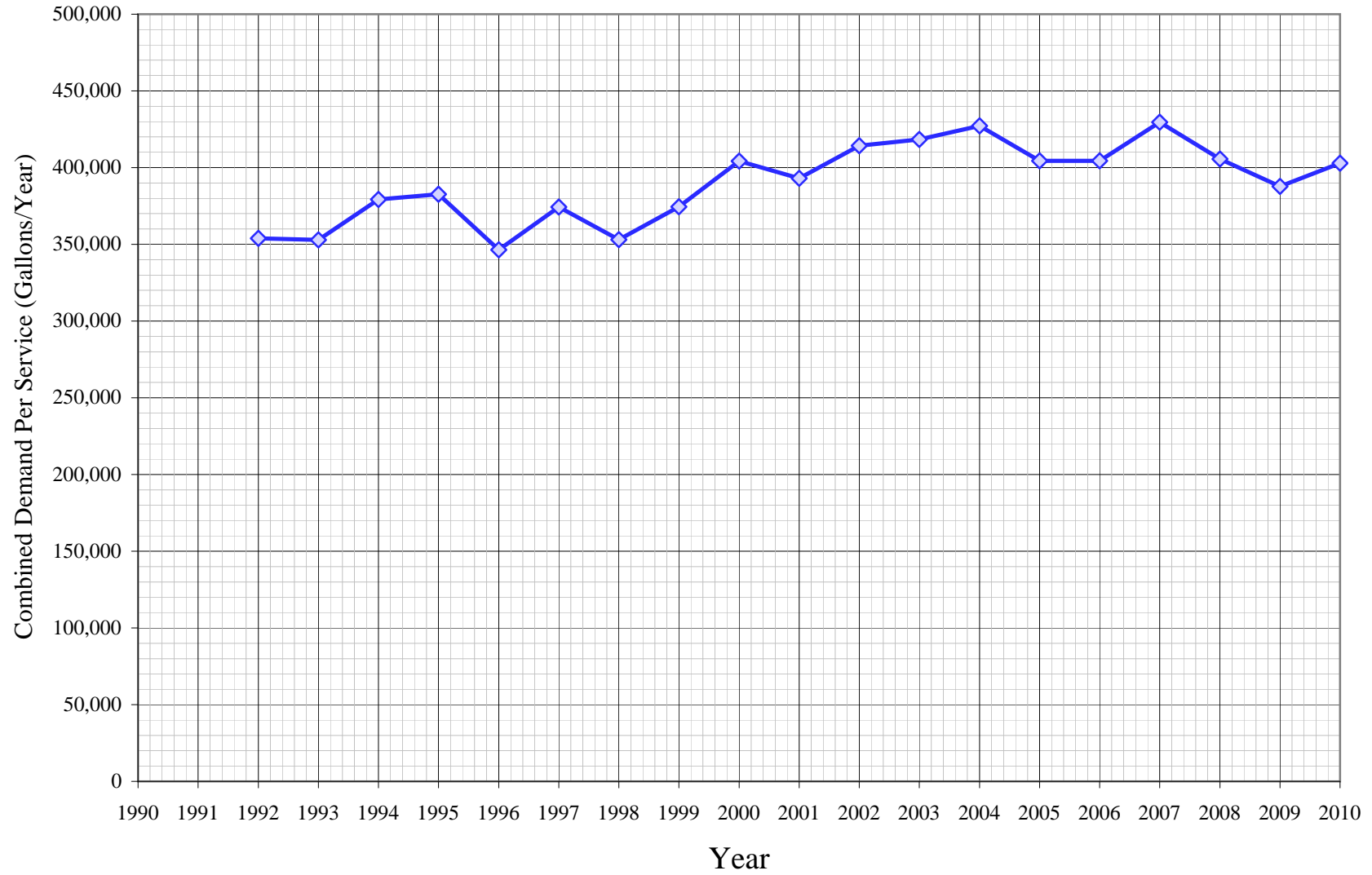
California Water Service Company - Dominguez District
Water Supply and Demand Analysis and Projections
Sales(AF)

Worksheet 4

Year	Multi-								Unaccounted Water	Total(AF) Sales	Total(AF) Demand	Total(Mgal) Demand
	Residential	Residential	Commercial	Industrial	Government	Recycled	Other					
1990												
1991												
1992	9,889	3,185	7,934	11,039	2,091	0	62	-627	34,199	33,572	10,940	
1993	10,196	3,052	7,961	9,772	1,978	0	52	519	33,010	33,529	10,925	
1994	10,567	3,131	8,053	9,653	2,316	0	39	2,337	33,759	36,096	11,762	
1995	10,497	3,116	8,221	11,741	2,257	0	92	573	35,924	36,497	11,893	
1996	11,170	3,249	8,716	7,559	2,235	0	95	102	33,025	33,127	10,794	
1997	11,484	3,307	9,645	8,835	2,283	0	129	330	35,684	36,014	11,735	
1998	10,619	3,185	8,699	8,867	1,833	0	118	746	33,323	34,069	11,101	
1999	11,195	3,276	9,196	11,077	2,068	0	173	-702	36,986	36,283	11,823	
2000	11,524	3,507	10,255	8,046	2,358	3,132	359	199	39,181	39,380	12,832	
2001	11,105	3,300	9,611	7,264	2,513	2,912	108	1,689	36,812	38,502	12,546	
2002	11,687	3,418	10,181	8,852	2,465	3,449	80	611	40,131	40,742	13,276	
2003	12,327	3,369	9,002	9,288	1,948	3,178	132	1,916	39,245	41,161	13,412	
2004	12,038	3,400	8,752	11,259	2,060	3,649	205	993	41,363	42,356	13,802	
2005	11,196	3,174	8,137	11,982	1,867	3,857	44	81	40,256	40,337	13,144	
2006	11,341	3,162	8,409	13,435	1,746	2,912	27	-574	41,032	40,458	13,183	
2007	11,689	3,128	8,586	13,934	1,986	4,366	28	-741	43,717	42,975	14,004	
2008	11,119	2,897	8,229	13,946	1,752	5,043	174	-2,646	43,160	40,514	13,202	
2009	10,616	2,776	7,448	10,336	1,486	3,649	122	2,311	36,433	38,745	12,625	
2010	9,937	2,661	7,308	10,953	1,438	3,928	67	4,045	36,292	40,337	13,144	
5 Yr. Avg.	11,192	3,027	8,162	12,727	1,767	3,965	79	-314	40,920	40,606	13,231	
10 Yr. Avg.	11,464	3,213	8,861	10,834	2,018	3,615	128	384	40,133	40,517	13,202	

Five year average = 2005 through 2009. Ten year average = 2000 through 2009.

Dominguez District Historical Demand Per Service



California Water Service Company - Dominguez District
Water Supply and Demand Analysis and Projections
Demand per Service (Gallons per Year)

Year	Multi-Residential			Commercial	Industrial	Government	Recycled	Total Other	Unaccounted/ Total Services	Combined Demand/Service
	Residential	(Service)	(Unit)							
1992	119,912	1,206,643		923,303	27,250,016	3,154,203		647,813	-6,605	353,894
1993	123,466	1,145,574		923,209	23,941,112	2,969,456		653,567	5,458	352,863
1994	127,726	1,179,521		934,843	23,650,862	3,415,463		436,011	24,550	379,269
1995	126,508	1,175,290		958,042	29,204,698	3,297,698		1,035,949	6,011	382,637
1996	134,237	1,225,461		1,015,772	18,947,749	3,208,530		997,877	1,069	346,389
1997	137,119	1,231,685		1,123,697	22,144,463	3,193,151		1,503,718	3,430	374,283
1998	126,517	1,168,784		1,014,521	22,398,991	2,448,531		1,043,270	7,731	353,065
1999	132,965	1,182,238		1,066,758	28,199,065	2,761,259		1,106,794	-7,249	374,487
2000	136,243	1,243,411	621,705	1,186,641	19,713,611	3,135,910	510,257,864	1,747,840	2,042	404,244
2001	130,784	1,148,981	574,491	1,088,899	17,930,852	3,288,518	237,249,367	700,850	17,247	393,101
2002	137,417	1,182,214	590,793	1,129,885	21,054,945	3,041,959	280,975,064	498,649	6,211	414,244
2003	144,879	1,180,346	531,070	997,405	21,018,318	2,432,399	129,429,921	958,903	19,478	418,428
2004	140,264	1,196,417	593,720	964,776	23,074,840	2,542,708	118,900,472	2,152,725	10,017	427,154
2005	129,667	1,124,200	554,565	889,996	24,402,251	2,303,901	125,668,472	389,371	812	404,354
2006	131,004	1,129,685	552,425	914,607	26,371,956	2,147,042	86,260,800	273,343	-5,735	404,500
2007	134,968	1,120,054	546,514	933,175	27,518,380	2,396,717	129,323,298	341,167	-7,408	429,545
2008	127,871	1,177,122	506,194	912,998	27,878,618	2,046,547	149,399,449	2,829,843	-26,494	405,628
2009	121,342	1,299,739	485,050	846,241	20,919,330	1,681,133	108,091,338	1,526,688	23,131	387,758
2010	113,320	1,231,858		830,905	22,030,293	1,638,202	116,357,530	844,522	40,394	402,830
5 Yr. Avg.	128,970	1,170,160	528,950	899,403	25,418,107	2,115,068	119,748,671	1,072,082	-3,139	406,357
10 Yr. Avg.	133,444	1,180,217	555,653	986,462	22,988,310	2,501,683	187,555,604	1,141,938	3,930	408,896

Five year average is from years 2005 through 2009.

Ten year average is from years 2000 through 2009.

California Water Service Company - Dominguez District**Water Supply and Demand Analysis and Projections****Demand per Service (Gallons per Day)**

Year	Multi-Residential			Commercial	Industrial	Government	Recycled	Total Other	Unaccounted/ Total Services	Combined Demand/Serv
	Residential	(Service)	(Unit)							
1992	329	3,306	0	2,530	74,658	8,642	0	1,775	-18	970
1993	338	3,139	0	2,529	65,592	8,135	0	1,791	15	967
1994	350	3,232	0	2,561	64,797	9,357	0	1,195	67	1,039
1995	347	3,220	0	2,625	80,013	9,035	0	2,838	16	1,048
1996	368	3,357	0	2,783	51,912	8,790	0	2,734	3	949
1997	376	3,374	0	3,079	60,670	8,748	0	4,120	9	1,025
1998	347	3,202	0	2,780	61,367	6,708	0	2,858	21	967
1999	364	3,239	0	2,923	77,258	7,565	0	3,032	-20	1,026
2000	373	3,407	1,703	3,251	54,010	8,592	1,397,967	4,789	6	1,108
2001	358	3,148	1,574	2,983	49,126	9,010	649,998	1,920	47	1,077
2002	376	3,239	1,619	3,096	57,685	8,334	769,795	1,366	17	1,135
2003	397	3,234	1,455	2,733	57,584	6,664	354,603	2,627	53	1,146
2004	384	3,278	1,627	2,643	63,219	6,966	325,755	5,898	27	1,170
2005	355	3,080	1,519	2,438	66,855	6,312	344,297	1,067	2	1,108
2006	359	3,095	1,513	2,506	72,252	5,882	236,331	749	-16	1,108
2007	370	3,069	1,497	2,557	75,393	6,566	354,310	935	-20	1,177
2008	350	3,225	1,387	2,501	76,380	5,607	409,314	7,753	-73	1,111
2009	332	3,561	1,329	2,318	57,313	4,606	296,141	4,183	63	1,062
2010	310	3,375	0	2,276	60,357	4,488	318,788	2,314	111	1,104
5 Yr. Avg.	353	3,206	1,449	2,464	69,639	5,795	328,079	2,937	-9	1,113
10 Yr. Avg.	366	3,233	1,522	2,703	62,982	6,854	513,851	3,129	11	1,120

Five year average is from years 2005 through 2009.

Ten year average is from years 2000 through 2009.

California Water Service Company - Dominguez District
Water Supply and Demand Analysis and Projections
Percentage Change in Annual Demand

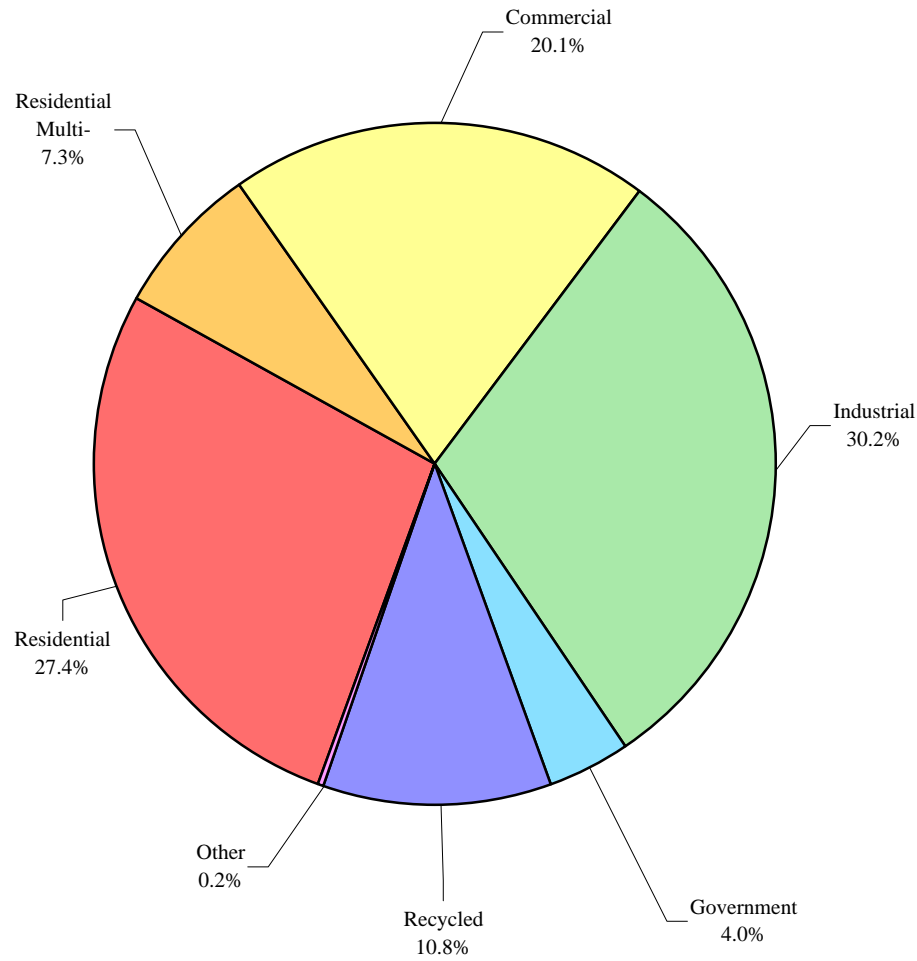
Year	Multi-							Unaccounted Water	Total
	Residential	Residential	Commercial	Industrial	Government	Recycled	Other		
1992									
1993	3.10%	-4.18%	0.35%	-11.48%	-5.42%		-15.38%	-182.77%	-0.13%
1994	3.64%	2.61%	1.15%	-1.21%	17.14%		-25.59%	350.50%	7.66%
1995	-0.66%	-0.47%	2.08%	21.63%	-2.57%		137.60%	-75.46%	1.11%
1996	6.41%	4.27%	6.03%	-35.62%	-0.96%		2.97%	-82.17%	-9.23%
1997	2.81%	1.79%	10.66%	16.87%	2.15%		36.11%	222.89%	8.72%
1998	-7.53%	-3.70%	-9.81%	0.37%	-19.70%		-8.32%	126.05%	-5.40%
1999	5.42%	2.86%	5.71%	24.92%	12.77%		46.23%	-194.14%	6.50%
2000	2.93%	7.04%	11.52%	-27.36%	14.03%		107.46%	-128.33%	8.53%
2001	-3.63%	-5.89%	-6.28%	-9.73%	6.58%	-7.01%	-70.08%	749.08%	-2.23%
2002	5.24%	3.55%	5.93%	21.87%	-1.93%	18.43%	-26.00%	-63.84%	5.82%
2003	5.48%	-1.43%	-11.57%	4.93%	-20.95%	-7.87%	66.41%	213.68%	1.03%
2004	-2.35%	0.93%	-2.78%	21.22%	5.74%	14.83%	54.65%	-48.16%	2.90%
2005	-6.99%	-6.64%	-7.03%	6.42%	-9.39%	5.69%	-78.41%	-91.85%	-4.77%
2006	1.30%	-0.39%	3.35%	12.12%	-6.46%	-24.49%	-39.29%	-808.38%	0.30%
2007	3.06%	-1.07%	2.10%	3.72%	13.74%	49.92%	5.31%	29.21%	6.22%
2008	-4.88%	-7.38%	-4.15%	0.08%	-11.76%	15.52%	514.41%	257.03%	-5.73%
2009	-4.52%	-4.18%	-9.49%	-25.88%	-15.21%	-27.65%	-29.87%	-187.34%	-4.37%
2010	-6.40%	-4.13%	-1.88%	5.96%	-3.23%	7.65%	-44.68%	75.00%	4.11%
5 Yr. Avg.	12.63%	13.75%	11.68%	16.20%	22.92%	0.95%	17.19%	-107.76%	0.67%
10 Yr. Avg.	-0.44%	-1.55%	-1.84%	0.74%	-2.56%	4.15%	50.46%	-7.89%	0.77%

Five year average is from years 2005 through 2009.

Ten year average is from years 2000 through 2009.

Dominguez District

Percent of Total Sales by Type of Use (2010)



California Water Service Company - Dominguez District
Water Supply and Demand Analysis and Projections
Percentage of Total Sales

Worksheet 7

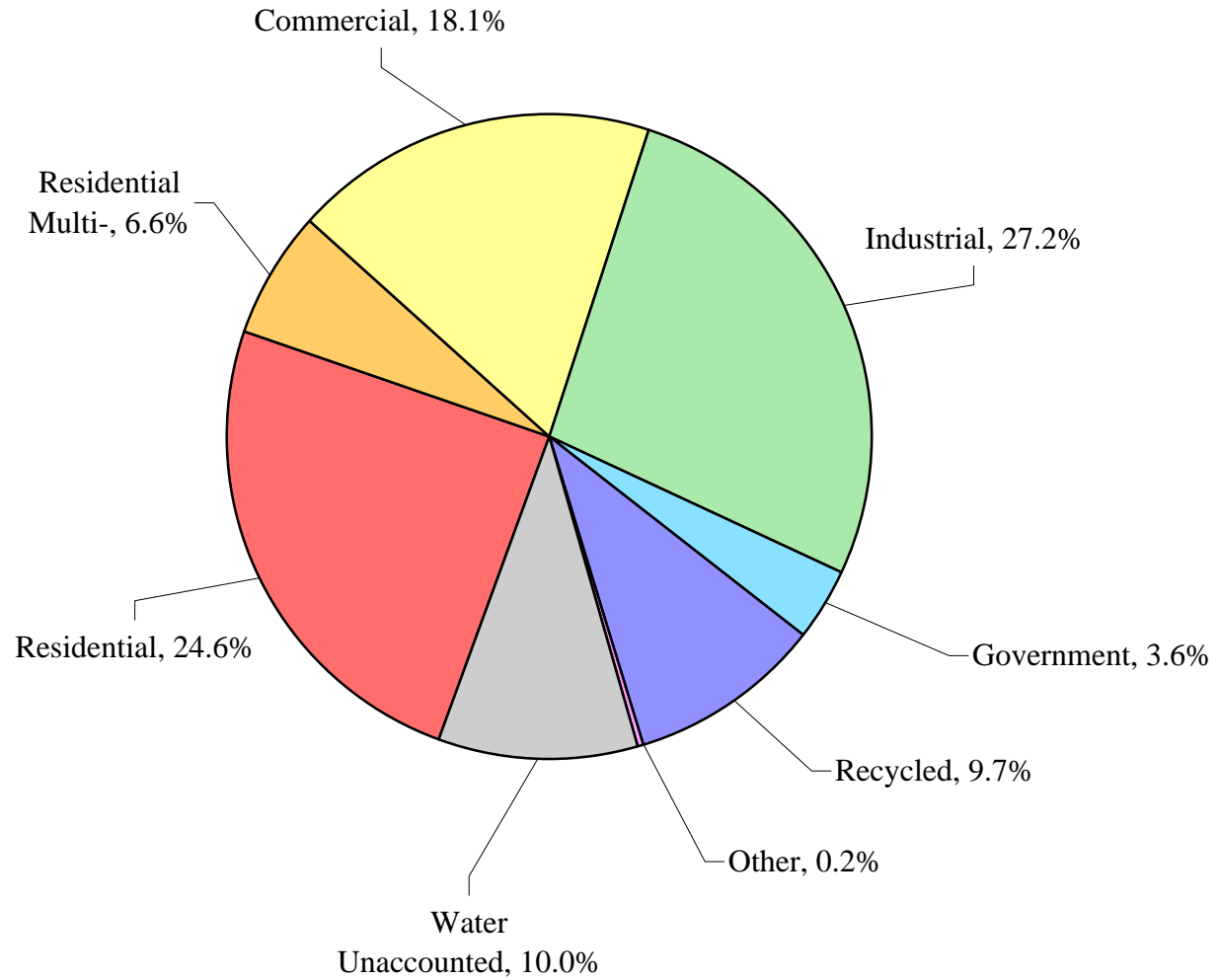
Year	Residential	Multi-Residential	Commercial	Industrial	Government	Recycled	Other	Percent Total
1992	28.92%	9.31%	23.20%	32.28%	6.11%	0.00%	0.18%	100.00%
1993	30.89%	9.24%	24.12%	29.60%	5.99%	0.00%	0.16%	100.00%
1994	31.30%	9.27%	23.85%	28.59%	6.86%	0.00%	0.11%	100.00%
1995	29.22%	8.67%	22.88%	32.68%	6.28%	0.00%	0.26%	100.00%
1996	33.82%	9.84%	26.39%	22.89%	6.77%	0.00%	0.29%	100.00%
1997	32.18%	9.27%	27.03%	24.76%	6.40%	0.00%	0.36%	100.00%
1998	31.87%	9.56%	26.11%	26.61%	5.50%	0.00%	0.36%	100.00%
1999	30.27%	8.86%	24.86%	29.95%	5.59%	0.00%	0.47%	100.00%
2000	29.41%	8.95%	26.17%	20.54%	6.02%	7.99%	0.92%	100.00%
2001	30.17%	8.97%	26.11%	19.73%	6.83%	7.91%	0.29%	100.00%
2002	29.12%	8.52%	25.37%	22.06%	6.14%	8.59%	0.20%	100.00%
2003	31.41%	8.58%	22.94%	23.67%	4.96%	8.10%	0.34%	100.00%
2004	29.10%	8.22%	21.16%	27.22%	4.98%	8.82%	0.50%	100.00%
2005	27.81%	7.88%	20.21%	29.76%	4.64%	9.58%	0.11%	100.00%
2006	27.64%	7.71%	20.49%	32.74%	4.26%	7.10%	0.07%	100.00%
2007	26.74%	7.16%	19.64%	31.87%	4.54%	9.99%	0.06%	100.00%
2008	25.76%	6.71%	19.07%	32.31%	4.06%	11.69%	0.40%	100.00%
2009	29.14%	7.62%	20.44%	28.37%	4.08%	10.02%	0.33%	100.00%
2010	27.38%	7.33%	20.14%	30.18%	3.96%	10.82%	0.19%	100.00%
5 Yr. Avg.	27.35%	7.40%	19.95%	31.10%	4.32%	9.69%	0.19%	100.00%
10 Yr. Avg.	28.63%	8.03%	22.16%	26.83%	5.05%	8.98%	0.32%	100.00%

Five year average is from years 2005 through 2009.

Ten year average is from years 2000 through 2009.

Dominguez District

Percent of Total Demand by Type of Use (2010)



California Water Service Company - Dominguez District
Water Supply and Demand Analysis and Projections
Percentage of Total Demand

Worksheet 8

Year	Residential	Multi-Residential	Commercial	Industrial	Government	Recycled	Other	Unaccounted Water	Percent Total
1992	29.46%	9.49%	23.63%	32.88%	6.23%	0.00%	0.18%	-1.87%	100.00%
1993	30.41%	9.10%	23.74%	29.14%	5.90%	0.00%	0.16%	1.55%	100.00%
1994	29.27%	8.67%	22.31%	26.74%	6.42%	0.00%	0.11%	6.47%	100.00%
1995	28.76%	8.54%	22.52%	32.17%	6.18%	0.00%	0.25%	1.57%	100.00%
1996	33.72%	9.81%	26.31%	22.82%	6.75%	0.00%	0.29%	0.31%	100.00%
1997	31.89%	9.18%	26.78%	24.53%	6.34%	0.00%	0.36%	0.92%	100.00%
1998	31.17%	9.35%	25.53%	26.03%	5.38%	0.00%	0.35%	2.19%	100.00%
1999	30.86%	9.03%	25.35%	30.53%	5.70%	0.00%	0.48%	-1.94%	100.00%
2000	29.26%	8.91%	26.04%	20.43%	5.99%	7.95%	0.91%	0.51%	100.00%
2001	28.84%	8.57%	24.96%	18.87%	6.53%	7.56%	0.28%	4.39%	100.00%
2002	28.69%	8.39%	24.99%	21.73%	6.05%	8.47%	0.20%	1.50%	100.00%
2003	29.95%	8.18%	21.87%	22.57%	4.73%	7.72%	0.32%	4.66%	100.00%
2004	28.42%	8.03%	20.66%	26.58%	4.86%	8.61%	0.48%	2.34%	100.00%
2005	27.76%	7.87%	20.17%	29.70%	4.63%	9.56%	0.11%	0.20%	100.00%
2006	28.03%	7.81%	20.78%	33.21%	4.32%	7.20%	0.07%	-1.42%	100.00%
2007	27.20%	7.28%	19.98%	32.42%	4.62%	10.16%	0.07%	-1.72%	100.00%
2008	27.44%	7.15%	20.31%	34.42%	4.33%	12.45%	0.43%	-6.53%	100.00%
2009	27.40%	7.17%	19.22%	26.68%	3.83%	9.42%	0.31%	5.97%	100.00%
2010	24.63%	6.60%	18.12%	27.15%	3.56%	9.74%	0.17%	10.03%	100.00%
5 Yr. Avg.	27.57%	7.46%	20.09%	31.29%	4.34%	9.76%	0.20%	-0.70%	100.00%
10 Yr. Avg.	28.30%	7.94%	21.90%	26.66%	4.99%	8.91%	0.32%	0.99%	100.00%

Five year average is from years 2005 through 2009.

Ten year average is from years 2000 through 2009.

California Water Service Company - Dominguez District

Water Supply and Demand Analysis and Projections

Worksheet 10

Scenario #1: Based on Maintaining Growth at the 10-Year 5-Year Average Annual Growth and Low Average High Demand per Service for each Customer Class.

Summary of Historical Growth Rate from Worksheet 2			
Customer Type	10 Yr. Avg. Historical Growth Rate	Individual Growth Rate Selected	Notes
Single Family Residential	0.380%	0.380%	Historical growth rate used
Multi Family Residential	-2.427%	0.308%	Overall growth rate used
Commercial	0.202%	0.202%	Historical growth rate used
Industrial	2.321%	2.321%	Historical growth rate used
Government	1.690%	1.690%	Historical growth rate used
Recycled Water	26.111%	2.100%	Percent changed to gain 6 service connections by 2030
Other	-4.029%	0.308%	Percent changed to overall growth rate
Overall	0.308%	0.391%	

Summary of Lowest Demand per Service from Worksheets 5 and 6										
Demand/Serv. Units	Multi-Residential			Commercial	Industrial	Government	Reclaimed	Total Other	Unaccounted Total Serv.	Combined Demand/Serv.
	Residential	(service)	(unit)							
Gal/Service/Yr	113,320	1,225,461	0	830,905	17,930,852	1,638,202	86,260,800	273,343	1,069	346,389
AF/Service/Yr	0.348	3.761	0.000	2.550	55.028	5.027	264.724	0.839	0.003	1.063
Gal/Service/Day	310	3,357	0	2,276	49,126	4,488	236,331	749	3	949

California Water Service Company - Dominguez District

Water Supply and Demand Analysis and Projections

30-year projection Summary

Scenario #1: Based on Maintaining Growth at the 10-Year 5-Year Average Annual Growth and Low Average High Demand per Service for each Customer Class.

Customer Type	Projected Services 2010	Projected Services 2015	Projected Services 2020	Projected Services 2025	Projected Services 2030	Projected Services 2035	Projected Services 2040	Services projected to be added from 2010 - 2040
Single Family Residential	28,603	29,151	29,709	30,278	30,857	31,448	32,050	3,447
Multi Family Residential	698	709	720	731	742	754	766	67
Commercial	2,869	2,898	2,927	2,957	2,987	3,017	3,048	179
Industrial	164	184	206	231	259	291	326	162
Government	293	318	346	377	409	445	484	191
Recycled Water	11	12	14	15	17	19	21	10
Other	26	26	27	27	28	28	29	3
Total	32,664	33,299	33,949	34,616	35,300	36,002	36,723	4,059

Customer Type	Projected Demand 2010 (ccf)	Projected Demand 2015 (ccf)	Projected Demand 2020 (ccf)	Projected Demand 2025 (ccf)	Projected Demand 2030 (ccf)	Projected Demand 2035 (ccf)	Projected Demand 2040 (ccf)	Projected demand to be added from 2010 - 2040 (ccf)
Single Family Residential	4,332,998	4,415,953	4,500,496	4,586,658	4,674,469	4,763,962	4,855,168	522,170
Multi Family Residential	1,143,696	1,161,418	1,179,414	1,197,689	1,216,248	1,235,094	1,254,232	110,536
Commercial	3,186,512	3,218,826	3,251,467	3,284,440	3,317,747	3,351,392	3,385,378	198,867
Industrial	3,924,209	4,401,250	4,936,281	5,536,353	6,209,371	6,964,204	7,810,798	3,886,589
Government	641,364	697,423	758,381	824,667	896,747	975,126	1,060,357	418,993
Recycled Water	1,295,085	1,436,902	1,594,248	1,768,823	1,962,516	2,177,418	2,415,854	1,120,768
Other	9,530	9,677	9,827	9,980	10,134	10,291	10,451	921
Unaccounted	46,669	47,576	48,505	49,458	50,435	51,438	52,469	5,800
Total	14,580,063	15,389,024	16,278,619	17,258,068	18,337,668	19,528,927	20,844,706	6,264,643

Customer Type	Projected Demand 2010 (AF)	Projected Demand 2015 (AF)	Projected Demand 2020 (AF)	Projected Demand 2025 (AF)	Projected Demand 2030 (AF)	Projected Demand 2035 (AF)	Projected Demand 2040 (AF)	Projected demand to be added from 2010 - 2040 (AF)
Single Family Residential	9,947	10,138	10,332	10,530	10,731	10,937	11,146	1,199
Multi Family Residential	2,626	2,666	2,708	2,750	2,792	2,835	2,879	254
Commercial	7,315	7,389	7,464	7,540	7,617	7,694	7,772	457
Industrial	9,009	10,104	11,332	12,710	14,255	15,988	17,931	8,922
Government	1,472	1,601	1,741	1,893	2,059	2,239	2,434	962
Recycled Water	2,973	3,299	3,660	4,061	4,505	4,999	5,546	2,573
Other	22	22	23	23	23	24	24	2
Unaccounted	107	109	111	114	116	118	120	13
Total	33,471	35,329	37,371	39,619	42,098	44,833	47,853	14,382

California Water Service Company - Dominguez District

Water Supply and Demand Analysis and Projections

2000's Projections

Scenario #1: Based on Maintaining Growth at the 10-Year 5-Year Average Annual Growth and Low Average High Demand per Service for each Customer Class.

Customer Type	Actual Services 2001	Actual Services 2002	Actual Services 2003	Actual Services 2004	Actual Services 2005	Actual Services 2006	Actual Services 2007	Actual Services 2008	Actual Services 2009	Projected Services 2010
Resident	27,668	27,713	27,725	27,965	28,136	28,210	28,220	28,334	28,495	28,603
Multi- Residential	936	942	930	926	920	912	910	802	696	698
Commercial	2,876	2,936	2,941	2,956	2,979	2,996	2,998	2,937	2,863	2,869
Industrial	132	137	144	159	160	166	165	163	160	164
Government	249	264	261	264	264	265	270	279	288	293
Recycled	4	4	8	10	10	11	11	11	11	11
Other	50	52	45	31	37	32	27	20	26	26
Total	31,915	32,048	32,054	32,311	32,506	32,592	32,601	32,546	32,539	32,664

Customer Type	Demand 2001(ccf)	Demand 2002(ccf)	Demand 2003(ccf)	Demand 2004(ccf)	Demand 2005(ccf)	Demand 2006(ccf)	Demand 2007(ccf)	Demand 2008(ccf)	Demand 2009(ccf)	Demand 2010(ccf)
Resident	4,191,316	4,198,133	4,199,951	4,236,307	4,262,211	4,273,421	4,274,936	4,292,206	4,316,595	4,332,998
Multi- Residential	1,533,351	1,543,180	1,523,522	1,516,969	1,507,140	1,494,035	1,490,758	1,313,833	1,140,184	1,143,696
Commercial	3,194,528	3,261,173	3,266,727	3,283,388	3,308,935	3,327,818	3,330,039	3,262,284	3,180,088	3,186,512
Industrial	3,164,035	3,283,885	3,451,675	3,811,224	3,835,194	3,979,014	3,955,044	3,907,104	3,835,194	3,924,209
Government	545,297	578,147	571,577	578,147	578,147	580,337	591,286	610,996	630,705	641,364
Recycled	461,254	461,254	922,508	1,153,134	1,153,134	1,268,448	1,268,448	1,268,448	1,268,448	1,295,085
Other	18,270	19,001	16,443	11,328	13,520	11,693	9,866	7,308	9,501	9,530
Unaccounted	45,599	45,789	45,797	46,165	46,443	46,566	46,579	46,500	46,490	46,669
Total	13,153,650	13,390,561	13,998,199	14,636,662	14,704,725	14,981,331	14,966,957	14,708,678	14,427,205	14,580,063

Customer Type	Demand 2001(AF)	Demand 2002(AF)	Demand 2003(AF)	Demand 2004(AF)	Demand 2005(AF)	Demand 2006(AF)	Demand 2007(AF)	Demand 2008(AF)	Demand 2009(AF)	Demand 2010(AF)
Resident	9,622	9,638	9,642	9,725	9,785	9,810	9,814	9,854	9,910	9,947
Multi- Residential	3,520	3,543	3,498	3,483	3,460	3,430	3,422	3,016	2,618	2,626
Commercial	7,334	7,487	7,499	7,538	7,596	7,640	7,645	7,489	7,301	7,315
Industrial	7,264	7,539	7,924	8,749	8,804	9,135	9,080	8,970	8,804	9,009
Government	1,252	1,327	1,312	1,327	1,327	1,332	1,357	1,403	1,448	1,472
Recycled	1,059	1,059	2,118	2,647	2,647	2,912	2,912	2,912	2,912	2,973
Other	42	44	38	26	31	27	23	17	22	22
Unaccounted	105	105	105	106	107	107	107	107	107	107
Total	30,197	30,741	32,136	33,601	33,758	34,393	34,360	33,767	33,121	33,471

California Water Service Company - Dominguez District

Water Supply and Demand Analysis and Projections

2010's Projections

Scenario #1: Based on Maintaining Growth at the 10-Year Average Annual Growth and Low Demand per Service for each Customer Class.
 5-Year Average High

Customer Type	Projected Services 2011	Projected Services 2012	Projected Services 2013	Projected Services 2014	Projected Services 2015	Projected Services 2016	Projected Services 2017	Projected Services 2018	Projected Services 2019	Projected Services 2020
Resident	28,712	28,821	28,931	29,041	29,151	29,262	29,373	29,484	29,597	29,709
Multi- Residential	700	702	705	707	709	711	713	716	718	720
Commercial	2,875	2,880	2,886	2,892	2,898	2,904	2,910	2,915	2,921	2,927
Industrial	168	171	175	179	184	188	192	197	201	206
Government	298	303	308	313	318	324	329	335	341	346
Recycled	11	12	12	12	12	13	13	13	14	14
Other	26	26	26	26	26	27	27	27	27	27
Total	32,790	32,916	33,043	33,171	33,299	33,428	33,557	33,687	33,818	33,949

Customer Type	Demand 2011(ccf)	Demand 2012(ccf)	Demand 2013(ccf)	Demand 2014(ccf)	Demand 2015(ccf)	Demand 2016(ccf)	Demand 2017(ccf)	Demand 2018(ccf)	Demand 2019(ccf)	Demand 2020(ccf)
Resident	4,349,463	4,365,991	4,382,582	4,399,236	4,415,953	4,432,734	4,449,578	4,466,486	4,483,459	4,500,496
Multi- Residential	1,147,219	1,150,752	1,154,296	1,157,852	1,161,418	1,164,995	1,168,583	1,172,182	1,175,793	1,179,414
Commercial	3,192,948	3,199,398	3,205,861	3,212,337	3,218,826	3,225,328	3,231,843	3,238,371	3,244,913	3,251,467
Industrial	4,015,290	4,108,485	4,203,843	4,301,414	4,401,250	4,503,403	4,607,927	4,714,877	4,824,309	4,936,281
Government	652,203	663,226	674,434	685,832	697,423	709,209	721,195	733,383	745,777	758,381
Recycled	1,322,282	1,350,050	1,378,401	1,407,347	1,436,902	1,467,077	1,497,885	1,529,341	1,561,457	1,594,248
Other	9,559	9,589	9,618	9,648	9,677	9,707	9,737	9,767	9,797	9,827
Unaccounted	46,849	47,029	47,211	47,393	47,576	47,760	47,945	48,131	48,317	48,505
Total	14,735,813	14,894,519	15,056,246	15,221,058	15,389,024	15,560,212	15,734,692	15,912,538	16,093,822	16,278,619

Customer Type	Demand 2011(AF)	Demand 2012(AF)	Demand 2013(AF)	Demand 2014(AF)	Demand 2015(AF)	Demand 2016(AF)	Demand 2017(AF)	Demand 2018(AF)	Demand 2019(AF)	Demand 2020(AF)
Resident	9,985	10,023	10,061	10,099	10,138	10,176	10,215	10,254	10,293	10,332
Multi- Residential	2,634	2,642	2,650	2,658	2,666	2,674	2,683	2,691	2,699	2,708
Commercial	7,330	7,345	7,360	7,375	7,389	7,404	7,419	7,434	7,449	7,464
Industrial	9,218	9,432	9,651	9,875	10,104	10,338	10,578	10,824	11,075	11,332
Government	1,497	1,523	1,548	1,574	1,601	1,628	1,656	1,684	1,712	1,741
Recycled	3,036	3,099	3,164	3,231	3,299	3,368	3,439	3,511	3,585	3,660
Other	22	22	22	22	22	22	22	22	22	23
Unaccounted	108	108	108	109	109	110	110	110	111	111
Total	33,829	34,193	34,565	34,943	35,329	35,722	36,122	36,530	36,947	37,371

California Water Service Company - Dominguez District

Water Supply and Demand Analysis and Projections

2020's Projections

Scenario #1: Based on Maintaining Growth at the 10-Year 5-Year Average Annual Growth and Low Average High Demand per Service for each Customer Class.

Customer Type	Projected Services 2021	Projected Services 2022	Projected Services 2023	Projected Services 2024	Projected Services 2025	Projected Services 2026	Projected Services 2027	Projected Services 2028	Projected Services 2029	Projected Services 2030
Resident	29,822	29,935	30,049	30,163	30,278	30,393	30,508	30,624	30,741	30,857
Multi- Residential	722	724	727	729	731	733	736	738	740	742
Commercial	2,933	2,939	2,945	2,951	2,957	2,963	2,969	2,975	2,981	2,987
Industrial	211	216	221	226	231	236	242	247	253	259
Government	352	358	364	370	377	383	389	396	403	409
Recycled	14	14	15	15	15	16	16	16	17	17
Other	27	27	27	27	27	27	27	28	28	28
Total	34,081	34,214	34,347	34,481	34,616	34,751	34,888	35,024	35,162	35,300

Customer Type	Demand 2021(ccf)	Demand 2022(ccf)	Demand 2023(ccf)	Demand 2024(ccf)	Demand 2025(ccf)	Demand 2026(ccf)	Demand 2027(ccf)	Demand 2028(ccf)	Demand 2029(ccf)	Demand 2030(ccf)
Resident	4,517,598	4,534,765	4,551,997	4,569,295	4,586,658	4,604,087	4,621,583	4,639,145	4,656,774	4,674,469
Multi- Residential	1,183,047	1,186,691	1,190,346	1,194,012	1,197,689	1,201,378	1,205,079	1,208,790	1,212,513	1,216,248
Commercial	3,258,035	3,264,616	3,271,211	3,277,819	3,284,440	3,291,075	3,297,723	3,304,384	3,311,059	3,317,747
Industrial	5,050,852	5,168,082	5,288,034	5,410,769	5,536,353	5,664,852	5,796,333	5,930,866	6,068,521	6,209,371
Government	771,197	784,230	797,484	810,961	824,667	838,604	852,776	867,188	881,843	896,747
Recycled	1,627,727	1,661,909	1,696,809	1,732,442	1,768,823	1,805,969	1,843,894	1,882,616	1,922,151	1,962,516
Other	9,858	9,888	9,918	9,949	9,980	10,010	10,041	10,072	10,103	10,134
Unaccounted	48,694	48,883	49,074	49,265	49,458	49,651	49,846	50,041	50,238	50,435
Total	16,467,008	16,659,065	16,854,873	17,054,512	17,258,068	17,465,626	17,677,274	17,893,102	18,113,202	18,337,668

Customer Type	Demand 2021(AF)	Demand 2022(AF)	Demand 2023(AF)	Demand 2024(AF)	Demand 2025(AF)	Demand 2026(AF)	Demand 2027(AF)	Demand 2028(AF)	Demand 2029(AF)	Demand 2030(AF)
Resident	10,371	10,410	10,450	10,490	10,530	10,570	10,610	10,650	10,691	10,731
Multi- Residential	2,716	2,724	2,733	2,741	2,750	2,758	2,766	2,775	2,784	2,792
Commercial	7,479	7,495	7,510	7,525	7,540	7,555	7,571	7,586	7,601	7,617
Industrial	11,595	11,864	12,140	12,422	12,710	13,005	13,307	13,615	13,932	14,255
Government	1,770	1,800	1,831	1,862	1,893	1,925	1,958	1,991	2,024	2,059
Recycled	3,737	3,815	3,895	3,977	4,061	4,146	4,233	4,322	4,413	4,505
Other	23	23	23	23	23	23	23	23	23	23
Unaccounted	112	112	113	113	114	114	114	115	115	116
Total	37,803	38,244	38,694	39,152	39,619	40,096	40,582	41,077	41,582	42,098

California Water Service Company - Dominguez District

Water Supply and Demand Analysis and Projections

2030's Projections

Scenario #1: Based on Maintaining Growth at the 10-Year 5-Year Average Annual Growth and Low Average High Demand per Service for each Customer Class.

Customer Type	Projected Services 2031	Projected Services 2032	Projected Services 2033	Projected Services 2034	Projected Services 2035	Projected Services 2036	Projected Services 2037	Projected Services 2038	Projected Services 2039	Projected Services 2040
Resident	30,975	31,092	31,211	31,329	31,448	31,568	31,688	31,808	31,929	32,050
Multi- Residential	745	747	749	752	754	756	759	761	763	766
Commercial	2,993	2,999	3,005	3,011	3,017	3,023	3,029	3,036	3,042	3,048
Industrial	265	271	278	284	291	297	304	311	318	326
Government	416	423	431	438	445	453	460	468	476	484
Recycled	17	18	18	18	19	19	20	20	21	21
Other	28	28	28	28	28	28	28	28	29	29
Total	35,439	35,579	35,719	35,860	36,002	36,145	36,288	36,433	36,578	36,723

Customer Type	Demand 2031(ccf)	Demand 2032(ccf)	Demand 2033(ccf)	Demand 2034(ccf)	Demand 2035(ccf)	Demand 2036(ccf)	Demand 2037(ccf)	Demand 2038(ccf)	Demand 2039(ccf)	Demand 2040(ccf)
Resident	4,692,232	4,710,063	4,727,961	4,745,927	4,763,962	4,782,065	4,800,237	4,818,478	4,836,788	4,855,168
Multi- Residential	1,219,994	1,223,751	1,227,521	1,231,301	1,235,094	1,238,898	1,242,714	1,246,541	1,250,381	1,254,232
Commercial	3,324,449	3,331,164	3,337,893	3,344,636	3,351,392	3,358,162	3,364,945	3,371,743	3,378,554	3,385,378
Industrial	6,353,491	6,500,955	6,651,843	6,806,232	6,964,204	7,125,844	7,291,234	7,460,464	7,633,621	7,810,798
Government	911,902	927,313	942,984	958,921	975,126	991,606	1,008,364	1,025,406	1,042,735	1,060,357
Recycled	2,003,729	2,045,807	2,088,769	2,132,633	2,177,418	2,223,144	2,269,830	2,317,497	2,366,164	2,415,854
Other	10,166	10,197	10,228	10,260	10,291	10,323	10,355	10,387	10,419	10,451
Unaccounted	50,634	50,833	51,034	51,236	51,438	51,642	51,847	52,053	52,260	52,469
Total	18,566,596	18,800,084	19,038,233	19,281,146	19,528,927	19,781,684	20,039,527	20,302,568	20,570,921	20,844,706

Customer Type	Demand 2031(AF)	Demand 2032(AF)	Demand 2033(AF)	Demand 2034(AF)	Demand 2035(AF)	Demand 2036(AF)	Demand 2037(AF)	Demand 2038(AF)	Demand 2039(AF)	Demand 2040(AF)
Resident	10,772	10,813	10,854	10,895	10,937	10,978	11,020	11,062	11,104	11,146
Multi- Residential	2,801	2,809	2,818	2,827	2,835	2,844	2,853	2,862	2,870	2,879
Commercial	7,632	7,647	7,663	7,678	7,694	7,709	7,725	7,741	7,756	7,772
Industrial	14,586	14,924	15,271	15,625	15,988	16,359	16,738	17,127	17,525	17,931
Government	2,093	2,129	2,165	2,201	2,239	2,276	2,315	2,354	2,394	2,434
Recycled	4,600	4,697	4,795	4,896	4,999	5,104	5,211	5,320	5,432	5,546
Other	23	23	23	24	24	24	24	24	24	24
Unaccounted	116	117	117	118	118	119	119	119	120	120
Total	42,623	43,159	43,706	44,264	44,833	45,413	46,005	46,609	47,225	47,853

**California Water Service Company - Dominguez District
Water Supply and Demand Analysis and Projections**

Scenario #2: Based on Maintaining Growth at the 10-Year Average Annual Growth and Average Demand per Service for each Customer Class.
 5-Year Low
 High

Summary of Historical Growth Rate from Worksheet 2			
Customer Type	10 Yr. Avg. Historical Growth Rate	Individual Growth Rate Selected	Notes
Single Family Residential	0.380%	0.380%	Historical growth rate used
Multi Family Residential	-2.427%	0.308%	Overall growth rate used
Commercial	0.202%	0.202%	Historical growth rate used
Industrial	2.321%	2.321%	Historical growth rate used
Government	1.690%	1.690%	Historical growth rate used
Recycled Water	26.111%	2.100%	Percent changed to gain 6 service connections by 2030
Other	-4.029%	0.308%	Percent changed to overall growth rate
Overall	0.308%	0.391%	

Summary of Average Demand per Service from Worksheets 5 and 6										
Demand/Serv. Units	Multi-Residential						Total Reclaimed	Total Other	Unaccounted Total Serv.	Combined Demand/Serv.
	Residential	(service)	(unit)	Commercial	Industrial	Government				
Gal/Service/Yr	121,342	1,299,739	485,050	846,241	20,919,330	1,681,133	108,091,338	1,526,688	23,131	387,758
AF/Service/Yr	0.372	3.989	1.489	2.597	64.199	5.159	331.720	4.685	0.071	1.190
Gal/Service/Day	332	3,561	1,329	2,318	57,313	4,606	296,141	4,183	63	1,062

**California Water Service Company - Dominguez District
Water Supply and Demand Analysis and Projections**

30-year projection Summary

Scenario #2: Based on Maintaining Growth at the

- 10-Year
 5-Year

Average Annual Growth and

- Low
 Average
 High

Demand per Service for each Customer Class.

Customer Type	Projected Services 2010	Projected Services 2015	Projected Services 2020	Projected Services 2025	Projected Services 2030	Projected Services 2035	Projected Services 2040	Services projected to be added from 2010 - 2040
Single Family Residential	28,603	29,151	29,709	30,278	30,857	31,448	32,050	3,447
Multi Family Residential	698	709	720	731	742	754	766	67
Commercial	2,869	2,898	2,927	2,957	2,987	3,017	3,048	179
Industrial	164	184	206	231	259	291	326	162
Government	293	318	346	377	409	445	484	191
Recycled Water	11	12	14	15	17	19	21	10
Other	26	26	27	27	28	28	29	3
Total	32,664	33,299	33,949	34,616	35,300	36,002	36,723	4,059

Customer Type	Projected Demand 2010 (ccf)	Projected Demand 2015 (ccf)	Projected Demand 2020 (ccf)	Projected Demand 2025 (ccf)	Projected Demand 2030 (ccf)	Projected Demand 2035 (ccf)	Projected Demand 2040 (ccf)	Projected demand to be added from 2010 - 2040 (ccf)
Single Family Residential	4,639,752	4,728,580	4,819,109	4,911,370	5,005,398	5,101,226	5,198,889	559,137
Multi Family Residential	1,213,019	1,231,815	1,250,902	1,270,285	1,289,968	1,309,956	1,330,254	117,235
Commercial	3,245,325	3,278,235	3,311,479	3,345,061	3,378,983	3,413,249	3,447,862	202,537
Industrial	4,578,244	5,134,792	5,758,995	6,459,079	7,244,268	8,124,906	9,112,599	4,534,354
Government	658,172	715,699	778,254	846,278	920,246	1,000,680	1,088,144	429,973
Recycled Water	1,622,840	1,800,547	1,997,713	2,216,470	2,459,182	2,728,471	3,027,248	1,404,408
Other	53,226	54,051	54,888	55,739	56,603	57,480	58,370	5,144
Unaccounted	1,010,045	1,029,670	1,049,782	1,070,402	1,091,556	1,113,267	1,135,565	125,519
Total	17,020,624	17,973,389	19,021,124	20,174,684	21,446,203	22,849,235	24,398,932	7,378,308

Customer Type	Projected Demand 2010 (AF)	Projected Demand 2015 (AF)	Projected Demand 2020 (AF)	Projected Demand 2025 (AF)	Projected Demand 2030 (AF)	Projected Demand 2035 (AF)	Projected Demand 2040 (AF)	Projected demand to be added from 2010 - 2040 (AF)
Single Family Residential	10,651	10,855	11,063	11,275	11,491	11,711	11,935	1,284
Multi Family Residential	2,785	2,828	2,872	2,916	2,961	3,007	3,054	269
Commercial	7,450	7,526	7,602	7,679	7,757	7,836	7,915	465
Industrial	10,510	11,788	13,221	14,828	16,631	18,652	20,920	10,410
Government	1,511	1,643	1,787	1,943	2,113	2,297	2,498	987
Recycled Water	3,726	4,134	4,586	5,088	5,646	6,264	6,950	3,224
Other	122	124	126	128	130	132	134	12
Unaccounted	2,319	2,364	2,410	2,457	2,506	2,556	2,607	288
Total	39,074	41,262	43,667	46,315	49,234	52,455	56,013	16,938

California Water Service Company - Dominguez District

Water Supply and Demand Analysis and Projections

Worksheet 11

2000's Projections

Scenario #2: Based on Maintaining Growth at the 10-Year 5-Year Average Annual Growth and Low Average High Demand per Service for each Customer Class.

Customer Type	Actual Services 2001	Actual Services 2002	Actual Services 2003	Actual Services 2004	Actual Services 2005	Actual Services 2006	Actual Services 2007	Actual Services 2008	Actual Services 2009	Projected Services 2010
Resident	27,668	27,713	27,725	27,965	28,136	28,210	28,220	28,334	28,495	28,603
Multi- Residential	936	942	930	926	920	912	910	802	696	698
Commercial	2,876	2,936	2,941	2,956	2,979	2,996	2,998	2,937	2,863	2,869
Industrial	132	137	144	159	160	166	165	163	160	164
Government	249	264	261	264	264	265	270	279	288	293
Recycled	4	4	8	10	10	11	11	11	11	11
Other	50	52	45	31	37	32	27	20	26	26
Total	31,915	32,048	32,054	32,311	32,506	32,592	32,601	32,546	32,539	32,664

Customer Type	Demand 2001(ccf)	Demand 2002(ccf)	Demand 2003(ccf)	Demand 2004(ccf)	Demand 2005(ccf)	Demand 2006(ccf)	Demand 2007(ccf)	Demand 2008(ccf)	Demand 2009(ccf)	Demand 2010(ccf)
Resident	4,488,040	4,495,340	4,497,286	4,536,217	4,563,955	4,575,958	4,577,580	4,596,072	4,622,188	4,639,752
Multi- Residential	1,626,292	1,636,717	1,615,867	1,608,917	1,598,492	1,584,592	1,581,117	1,393,468	1,209,294	1,213,019
Commercial	3,253,489	3,321,364	3,327,020	3,343,989	3,370,008	3,389,239	3,391,502	3,322,495	3,238,782	3,245,325
Industrial	3,691,375	3,831,200	4,026,954	4,446,429	4,474,394	4,642,183	4,614,218	4,558,289	4,474,394	4,578,244
Government	559,587	593,297	586,555	593,297	593,297	595,545	606,781	627,007	647,233	658,172
Recycled	577,986	577,986	1,155,972	1,444,965	1,444,965	1,589,462	1,589,462	1,589,462	1,589,462	1,622,840
Other	102,044	106,126	91,839	63,267	75,512	65,308	55,104	40,818	53,063	53,226
Unaccounted	986,882	990,994	991,180	999,127	1,005,157	1,007,816	1,008,094	1,006,394	1,006,177	1,010,045
Total	15,285,694	15,553,023	16,292,674	17,036,208	17,125,780	17,450,103	17,423,858	17,134,004	16,840,593	17,020,624

Customer Type	Demand 2001(AF)	Demand 2002(AF)	Demand 2003(AF)	Demand 2004(AF)	Demand 2005(AF)	Demand 2006(AF)	Demand 2007(AF)	Demand 2008(AF)	Demand 2009(AF)	Demand 2010(AF)
Resident	10,303	10,320	10,324	10,414	10,477	10,505	10,509	10,551	10,611	10,651
Multi- Residential	3,733	3,757	3,710	3,694	3,670	3,638	3,630	3,199	2,776	2,785
Commercial	7,469	7,625	7,638	7,677	7,737	7,781	7,786	7,627	7,435	7,450
Industrial	8,474	8,795	9,245	10,208	10,272	10,657	10,593	10,464	10,272	10,510
Government	1,285	1,362	1,347	1,362	1,362	1,367	1,393	1,439	1,486	1,511
Recycled	1,327	1,327	2,654	3,317	3,317	3,649	3,649	3,649	3,649	3,726
Other	234	244	211	145	173	150	127	94	122	122
Unaccounted	2,266	2,275	2,275	2,294	2,308	2,314	2,314	2,310	2,310	2,319
Total	35,091	35,705	37,403	39,110	39,316	40,060	40,000	39,335	38,661	39,074

California Water Service Company - Dominguez District
Water Supply and Demand Analysis and Projections

2010's Projections

Scenario #2: Based on Maintaining Growth at the

- 10-Year
- 5-Year

Average Annual Growth and

- Low
- Average
- High

Demand per Service for each Customer Class.

Customer Type	Projected Services 2011	Projected Services 2012	Projected Services 2013	Projected Services 2014	Projected Services 2015	Projected Services 2016	Projected Services 2017	Projected Services 2018	Projected Services 2019	Projected Services 2020
Resident	28,712	28,821	28,931	29,041	29,151	29,262	29,373	29,484	29,597	29,709
Multi- Residential	700	702	705	707	709	711	713	716	718	720
Commercial	2,875	2,880	2,886	2,892	2,898	2,904	2,910	2,915	2,921	2,927
Industrial	168	171	175	179	184	188	192	197	201	206
Government	298	303	308	313	318	324	329	335	341	346
Recycled	11	12	12	12	12	13	13	13	14	14
Other	26	26	26	26	26	27	27	27	27	27
Total	32,790	32,916	33,043	33,171	33,299	33,428	33,557	33,687	33,818	33,949

Customer Type	Demand 2011(ccf)	Demand 2012(ccf)	Demand 2013(ccf)	Demand 2014(ccf)	Demand 2015(ccf)	Demand 2016(ccf)	Demand 2017(ccf)	Demand 2018(ccf)	Demand 2019(ccf)	Demand 2020(ccf)
Resident	4,657,384	4,675,082	4,692,847	4,710,680	4,728,580	4,746,549	4,764,586	4,782,691	4,800,865	4,819,109
Multi- Residential	1,216,755	1,220,502	1,224,262	1,228,032	1,231,815	1,235,609	1,239,414	1,243,232	1,247,061	1,250,902
Commercial	3,251,880	3,258,449	3,265,031	3,271,627	3,278,235	3,284,857	3,291,493	3,298,142	3,304,804	3,311,479
Industrial	4,684,505	4,793,233	4,904,484	5,018,317	5,134,792	5,253,970	5,375,915	5,500,690	5,628,361	5,758,995
Government	669,295	680,606	692,108	703,805	715,699	727,794	740,094	752,602	765,321	778,254
Recycled	1,656,920	1,691,715	1,727,241	1,763,513	1,800,547	1,838,359	1,876,964	1,916,380	1,956,624	1,997,713
Other	53,390	53,555	53,720	53,885	54,051	54,217	54,384	54,552	54,720	54,888
Unaccounted	1,013,932	1,017,838	1,021,763	1,025,707	1,029,670	1,033,653	1,037,655	1,041,677	1,045,720	1,049,782
Total	17,204,061	17,390,980	17,581,455	17,775,565	17,973,389	18,175,008	18,380,506	18,589,966	18,803,475	19,021,124

Customer Type	Demand 2011(AF)	Demand 2012(AF)	Demand 2013(AF)	Demand 2014(AF)	Demand 2015(AF)	Demand 2016(AF)	Demand 2017(AF)	Demand 2018(AF)	Demand 2019(AF)	Demand 2020(AF)
Resident	10,692	10,733	10,773	10,814	10,855	10,897	10,938	10,980	11,021	11,063
Multi- Residential	2,793	2,802	2,811	2,819	2,828	2,837	2,845	2,854	2,863	2,872
Commercial	7,465	7,480	7,496	7,511	7,526	7,541	7,556	7,572	7,587	7,602
Industrial	10,754	11,004	11,259	11,521	11,788	12,062	12,341	12,628	12,921	13,221
Government	1,536	1,562	1,589	1,616	1,643	1,671	1,699	1,728	1,757	1,787
Recycled	3,804	3,884	3,965	4,048	4,134	4,220	4,309	4,399	4,492	4,586
Other	123	123	123	124	124	124	125	125	126	126
Unaccounted	2,328	2,337	2,346	2,355	2,364	2,373	2,382	2,391	2,401	2,410
Total	39,495	39,924	40,362	40,807	41,262	41,724	42,196	42,677	43,167	43,667

California Water Service Company - Dominguez District
Water Supply and Demand Analysis and Projections

2020's Projections

Scenario #2: Based on Maintaining Growth at the

- 10-Year
- 5-Year

Average Annual Growth and

- Low
- Average
- High

Demand per Service for each Customer Class.

Customer Type	Projected Services 2021	Projected Services 2022	Projected Services 2023	Projected Services 2024	Projected Services 2025	Projected Services 2026	Projected Services 2027	Projected Services 2028	Projected Services 2029	Projected Services 2030
Resident	29,822	29,935	30,049	30,163	30,278	30,393	30,508	30,624	30,741	30,857
Multi- Residential	722	724	727	729	731	733	736	738	740	742
Commercial	2,933	2,939	2,945	2,951	2,957	2,963	2,969	2,975	2,981	2,987
Industrial	211	216	221	226	231	236	242	247	253	259
Government	352	358	364	370	377	383	389	396	403	409
Recycled	14	14	15	15	15	16	16	16	17	17
Other	27	27	27	27	27	27	27	28	28	28
Total	34,081	34,214	34,347	34,481	34,616	34,751	34,888	35,024	35,162	35,300

Customer Type	Demand 2021(ccf)	Demand 2022(ccf)	Demand 2023(ccf)	Demand 2024(ccf)	Demand 2025(ccf)	Demand 2026(ccf)	Demand 2027(ccf)	Demand 2028(ccf)	Demand 2029(ccf)	Demand 2030(ccf)
Resident	4,837,421	4,855,804	4,874,256	4,892,778	4,911,370	4,930,034	4,948,768	4,967,573	4,986,450	5,005,398
Multi- Residential	1,254,755	1,258,619	1,262,496	1,266,384	1,270,285	1,274,197	1,278,122	1,282,058	1,286,007	1,289,968
Commercial	3,318,169	3,324,871	3,331,588	3,338,317	3,345,061	3,351,818	3,358,589	3,365,373	3,372,171	3,378,983
Industrial	5,892,662	6,029,430	6,169,373	6,312,564	6,459,079	6,608,994	6,762,389	6,919,344	7,079,942	7,244,268
Government	791,407	804,782	818,383	832,213	846,278	860,580	875,123	889,913	904,953	920,246
Recycled	2,039,665	2,082,498	2,126,231	2,170,882	2,216,470	2,263,016	2,310,539	2,359,061	2,408,601	2,459,182
Other	55,058	55,227	55,397	55,568	55,739	55,911	56,083	56,256	56,429	56,603
Unaccounted	1,053,865	1,057,968	1,062,092	1,066,237	1,070,402	1,074,590	1,078,798	1,083,029	1,087,281	1,091,556
Total	19,243,001	19,469,199	19,699,815	19,934,943	20,174,684	20,419,139	20,668,411	20,922,606	21,181,833	21,446,203

Customer Type	Demand 2021(AF)	Demand 2022(AF)	Demand 2023(AF)	Demand 2024(AF)	Demand 2025(AF)	Demand 2026(AF)	Demand 2027(AF)	Demand 2028(AF)	Demand 2029(AF)	Demand 2030(AF)
Resident	11,105	11,147	11,190	11,232	11,275	11,318	11,361	11,404	11,447	11,491
Multi- Residential	2,881	2,889	2,898	2,907	2,916	2,925	2,934	2,943	2,952	2,961
Commercial	7,618	7,633	7,648	7,664	7,679	7,695	7,710	7,726	7,741	7,757
Industrial	13,528	13,842	14,163	14,492	14,828	15,172	15,524	15,885	16,253	16,631
Government	1,817	1,848	1,879	1,911	1,943	1,976	2,009	2,043	2,077	2,113
Recycled	4,682	4,781	4,881	4,984	5,088	5,195	5,304	5,416	5,529	5,646
Other	126	127	127	128	128	128	129	129	130	130
Unaccounted	2,419	2,429	2,438	2,448	2,457	2,467	2,477	2,486	2,496	2,506
Total	44,176	44,695	45,225	45,765	46,315	46,876	47,448	48,032	48,627	49,234

California Water Service Company - Dominguez District
Water Supply and Demand Analysis and Projections

2030's Projections

Scenario #2: Based on Maintaining Growth at the

- 10-Year
- 5-Year

Average Annual Growth and

- Low
- Average
- High

Demand per Service for each Customer Class.

Customer Type	Projected Services 2031	Projected Services 2032	Projected Services 2033	Projected Services 2034	Projected Services 2035	Projected Services 2036	Projected Services 2037	Projected Services 2038	Projected Services 2039	Projected Services 2040
Resident	30,975	31,092	31,211	31,329	31,448	31,568	31,688	31,808	31,929	32,050
Multi- Residential	745	747	749	752	754	756	759	761	763	766
Commercial	2,993	2,999	3,005	3,011	3,017	3,023	3,029	3,036	3,042	3,048
Industrial	265	271	278	284	291	297	304	311	318	326
Government	416	423	431	438	445	453	460	468	476	484
Recycled	17	18	18	18	19	19	20	20	21	21
Other	28	28	28	28	28	28	28	28	29	29
Total	35,439	35,579	35,719	35,860	36,002	36,145	36,288	36,433	36,578	36,723

Customer Type	Demand 2031(ccf)	Demand 2032(ccf)	Demand 2033(ccf)	Demand 2034(ccf)	Demand 2035(ccf)	Demand 2036(ccf)	Demand 2037(ccf)	Demand 2038(ccf)	Demand 2039(ccf)	Demand 2040(ccf)
Resident	5,024,419	5,043,512	5,062,677	5,081,915	5,101,226	5,120,611	5,140,069	5,159,602	5,179,208	5,198,889
Multi- Residential	1,293,941	1,297,926	1,301,924	1,305,934	1,309,956	1,313,991	1,318,038	1,322,098	1,326,170	1,330,254
Commercial	3,385,808	3,392,648	3,399,501	3,406,368	3,413,249	3,420,143	3,427,052	3,433,975	3,440,911	3,447,862
Industrial	7,412,407	7,584,449	7,760,484	7,940,605	8,124,906	8,313,485	8,506,441	8,703,876	8,905,893	9,112,599
Government	935,798	951,613	967,696	984,050	1,000,680	1,017,592	1,034,789	1,052,277	1,070,060	1,088,144
Recycled	2,510,824	2,563,552	2,617,386	2,672,351	2,728,471	2,785,769	2,844,270	2,903,999	2,964,983	3,027,248
Other	56,777	56,952	57,127	57,303	57,480	57,657	57,834	58,013	58,191	58,370
Unaccounted	1,095,852	1,100,172	1,104,514	1,108,879	1,113,267	1,117,679	1,122,114	1,126,573	1,131,057	1,135,565
Total	21,715,827	21,990,823	22,271,309	22,557,405	22,849,235	23,146,927	23,450,608	23,760,412	24,076,474	24,398,932

Customer Type	Demand 2031(AF)	Demand 2032(AF)	Demand 2033(AF)	Demand 2034(AF)	Demand 2035(AF)	Demand 2036(AF)	Demand 2037(AF)	Demand 2038(AF)	Demand 2039(AF)	Demand 2040(AF)
Resident	11,535	11,578	11,622	11,667	11,711	11,755	11,800	11,845	11,890	11,935
Multi- Residential	2,971	2,980	2,989	2,998	3,007	3,017	3,026	3,035	3,044	3,054
Commercial	7,773	7,789	7,804	7,820	7,836	7,852	7,867	7,883	7,899	7,915
Industrial	17,017	17,412	17,816	18,229	18,652	19,085	19,528	19,981	20,445	20,920
Government	2,148	2,185	2,222	2,259	2,297	2,336	2,376	2,416	2,457	2,498
Recycled	5,764	5,885	6,009	6,135	6,264	6,395	6,530	6,667	6,807	6,950
Other	130	131	131	132	132	132	133	133	134	134
Unaccounted	2,516	2,526	2,536	2,546	2,556	2,566	2,576	2,586	2,597	2,607
Total	49,853	50,484	51,128	51,785	52,455	53,138	53,836	54,547	55,272	56,013

California Water Service Company - Dominguez District Water Supply and Demand Analysis and Projections

Worksheet 12

Scenario #3: Based on Maintaining Growth at the 10-Year 5-Year Average Annual Growth and Low Average High Demand per Service for each Customer Class.

Summary of Historical Growth Rate from Worksheet 2			
Customer Type	10 Yr. Avg. Historical Growth Rate	Individual Growth Rate Selected	Notes
Single Family Residential	0.380%	0.380%	Historical growth rate used
Multi Family Residential	-2.427%	0.308%	Overall growth rate used
Commercial	0.202%	0.202%	Historical growth rate used
Industrial	2.321%	2.321%	Historical growth rate used
Government	1.690%	1.690%	Historical growth rate used
Recycled Water	26.111%	2.100%	Percent changed to gain 6 service connections by 2030
Other	-4.029%	0.308%	Percent changed to overall growth rate
Overall	0.308%	0.391%	

Summary of Maximum Demand per Service from Worksheets 5 and 6										
Demand/Serv. Units	Multi-Residential			Commercial	Industrial	Government	Reclaimed	Total Other	Unaccounted Total Serv.	Combined Demand/Serv.
	Residential	(service)	(unit)							
Gal/Service/Yr	134,968	1,120,054	546,514	933,175	27,518,380	2,396,717	129,323,298	2,829,843	40,394	429,545
AF/Service/Yr	0.414	3.437	1.677	2.864	84.451	7.355	396.878	8.684	0.124	1.318
Gal/Service/Day	370	3,069	1,497	2,557	75,393	6,566	354,310	7,753	111	1,177

**California Water Service Company - Dominguez District
Water Supply and Demand Analysis and Projections**

30-year projection Summary

Scenario #3: Based on Maintaining Growth at the 10-Year 5-Year Average Annual Growth and Low Average High Demand per Service for each Customer Class.

Customer Type	Projected Services 2010	Projected Services 2015	Projected Services 2020	Projected Services 2025	Projected Services 2030	Projected Services 2035	Projected Services 2040	Services projected to be added from 2010 - 2040
Single Family Residential	28,603	29,151	29,709	30,278	30,857	31,448	32,050	3,447
Multi Family Residential	698	709	720	731	742	754	766	67
Commercial	2,869	2,898	2,927	2,957	2,987	3,017	3,048	179
Industrial	164	184	206	231	259	291	326	162
Government	293	318	346	377	409	445	484	191
Recycled Water	11	12	14	15	17	19	21	10
Other	26	26	27	27	28	28	29	3
Total	32,664	33,299	33,949	34,616	35,300	36,002	36,723	4,059

Customer Type	Projected Demand 2010 (ccf)	Projected Demand 2015 (ccf)	Projected Demand 2020 (ccf)	Projected Demand 2025 (ccf)	Projected Demand 2030 (ccf)	Projected Demand 2035 (ccf)	Projected Demand 2040 (ccf)	Projected demand to be added from 2010 - 2040 (ccf)
Single Family Residential	5,160,750	5,259,552	5,360,246	5,462,867	5,567,454	5,674,042	5,782,672	621,922
Multi Family Residential	1,045,322	1,061,520	1,077,968	1,094,672	1,111,634	1,128,859	1,146,350	101,028
Commercial	3,578,718	3,615,009	3,651,669	3,688,700	3,726,106	3,763,892	3,802,062	223,344
Industrial	6,022,462	6,754,574	7,575,684	8,496,610	9,529,488	10,687,927	11,987,189	5,964,727
Government	938,326	1,020,341	1,109,523	1,206,501	1,311,955	1,426,626	1,551,320	612,993
Recycled Water	1,941,608	2,154,221	2,390,116	2,651,843	2,942,229	3,264,414	3,621,879	1,680,270
Other	98,659	100,188	101,740	103,317	104,918	106,544	108,194	9,535
Unaccounted	1,763,801	1,798,071	1,833,191	1,869,200	1,906,139	1,944,053	1,982,990	219,189
Total	20,549,647	21,763,476	23,100,138	24,573,710	26,199,923	27,996,356	29,982,656	9,433,009

Customer Type	Projected Demand 2010 (AF)	Projected Demand 2015 (AF)	Projected Demand 2020 (AF)	Projected Demand 2025 (AF)	Projected Demand 2030 (AF)	Projected Demand 2035 (AF)	Projected Demand 2040 (AF)	Projected demand to be added from 2010 - 2040 (AF)
Single Family Residential	11,848	12,074	12,306	12,541	12,781	13,026	13,275	1,428
Multi Family Residential	2,400	2,437	2,475	2,513	2,552	2,592	2,632	232
Commercial	8,216	8,299	8,383	8,468	8,554	8,641	8,728	513
Industrial	13,826	15,506	17,391	19,506	21,877	24,536	27,519	13,693
Government	2,154	2,342	2,547	2,770	3,012	3,275	3,561	1,407
Recycled Water	4,457	4,945	5,487	6,088	6,754	7,494	8,315	3,857
Other	226	230	234	237	241	245	248	22
Unaccounted	4,049	4,128	4,208	4,291	4,376	4,463	4,552	503
Total	47,176	49,962	53,031	56,414	60,147	64,271	68,831	21,655

43,127

**California Water Service Company - Dominguez District
Water Supply and Demand Analysis and Projections**

2000's Projections

Scenario #3: Based on Maintaining Growth at the

- 10-Year
- 5-Year

Average Annual Growth and

- Low
- Average
- High

Demand per Service for each Customer Class.

Customer Type	Actual Services 2001	Actual Services 2002	Actual Services 2003	Actual Services 2004	Actual Services 2005	Actual Services 2006	Actual Services 2007	Actual Services 2008	Actual Services 2009	Projected Services 2010
Resident	27,668	27,713	27,725	27,965	28,136	28,210	28,220	28,334	28,495	28,603
Multi- Residential	936	942	930	926	920	912	910	802	696	698
Commercial	2,876	2,936	2,941	2,956	2,979	2,996	2,998	2,937	2,863	2,869
Industrial	132	137	144	159	160	166	165	163	160	164
Government	249	264	261	264	264	265	270	279	288	293
Recycled	4	4	8	10	10	11	11	11	11	11
Other	50	52	45	31	37	32	27	20	26	26
Total	31,915	32,048	32,054	32,311	32,506	32,592	32,601	32,546	32,539	32,664

Various service growth percentages have been adjusted due to wide fluctuation of values and anticipated conversion between customer classes.

Customer Type	Demand 2001(ccf)	Demand 2002(ccf)	Demand 2003(ccf)	Demand 2004(ccf)	Demand 2005(ccf)	Demand 2006(ccf)	Demand 2007(ccf)	Demand 2008(ccf)	Demand 2009(ccf)	Demand 2010(ccf)
Resident	4,992,002	5,000,121	5,002,286	5,045,588	5,076,440	5,089,792	5,091,596	5,112,165	5,141,213	5,160,750
Multi- Residential	1,401,462	1,410,446	1,392,478	1,386,489	1,377,505	1,365,527	1,362,532	1,200,825	1,042,113	1,045,322
Commercial	3,587,721	3,662,569	3,668,806	3,687,518	3,716,210	3,737,417	3,739,912	3,663,816	3,571,503	3,578,718
Industrial	4,855,827	5,039,760	5,297,266	5,849,065	5,885,851	6,106,571	6,069,784	5,996,211	5,885,851	6,022,462
Government	797,779	845,838	836,226	845,838	845,838	849,042	865,061	893,897	922,732	938,326
Recycled	691,518	691,518	1,383,035	1,728,794	1,728,794	1,901,673	1,901,673	1,901,673	1,901,673	1,941,608
Other	189,147	196,713	170,232	117,271	139,969	121,054	102,139	75,659	98,356	98,659
Unaccounted	1,723,351	1,730,533	1,730,857	1,744,734	1,755,264	1,759,908	1,760,394	1,757,424	1,757,046	1,763,801
Total	18,238,805	18,577,496	19,481,186	20,405,297	20,525,871	20,930,983	20,893,092	20,601,670	20,320,488	20,549,647

Customer Type	Demand 2001(AF)	Demand 2002(AF)	Demand 2003(AF)	Demand 2004(AF)	Demand 2005(AF)	Demand 2006(AF)	Demand 2007(AF)	Demand 2008(AF)	Demand 2009(AF)	Demand 2010(AF)
Resident	11,460	11,479	11,484	11,583	11,654	11,685	11,689	11,736	11,803	11,848
Multi- Residential	3,217	3,238	3,197	3,183	3,162	3,135	3,128	2,757	2,392	2,400
Commercial	8,236	8,408	8,422	8,465	8,531	8,580	8,586	8,411	8,199	8,216
Industrial	11,148	11,570	12,161	13,428	13,512	14,019	13,934	13,766	13,512	13,826
Government	1,831	1,942	1,920	1,942	1,942	1,949	1,986	2,052	2,118	2,154
Recycled	1,588	1,588	3,175	3,969	3,969	4,366	4,366	4,366	4,366	4,457
Other	434	452	391	269	321	278	234	174	226	226
Unaccounted	3,956	3,973	3,974	4,005	4,030	4,040	4,041	4,035	4,034	4,049
Total	41,871	42,648	44,723	46,844	47,121	48,051	47,964	47,295	46,650	47,176

California Water Service Company - Dominguez District
Water Supply and Demand Analysis and Projections

2010's Projections

Scenario #3: Based on Maintaining Growth at the

- 10-Year
- 5-Year

Average Annual Growth and

- Low
- Average
- High

Demand per Service for each Customer Class.

Customer Type	Projected Services 2011	Projected Services 2012	Projected Services 2013	Projected Services 2014	Projected Services 2015	Projected Services 2016	Projected Services 2017	Projected Services 2018	Projected Services 2019	Projected Services 2020
Resident	28,712	28,821	28,931	29,041	29,151	29,262	29,373	29,484	29,597	29,709
Multi- Residential	700	702	705	707	709	711	713	716	718	720
Commercial	2,875	2,880	2,886	2,892	2,898	2,904	2,910	2,915	2,921	2,927
Industrial	168	171	175	179	184	188	192	197	201	206
Government	298	303	308	313	318	324	329	335	341	346
Recycled	11	12	12	12	12	13	13	13	14	14
Other	26	26	26	26	26	27	27	27	27	27
Total	32,790	32,916	33,043	33,171	33,299	33,428	33,557	33,687	33,818	33,949

Various service growth percentages have been adjusted due to wide fluctuation of values and anticipated conversion between customer classes.

Customer Type	Demand 2011(ccf)	Demand 2012(ccf)	Demand 2013(ccf)	Demand 2014(ccf)	Demand 2015(ccf)	Demand 2016(ccf)	Demand 2017(ccf)	Demand 2018(ccf)	Demand 2019(ccf)	Demand 2020(ccf)
Resident	5,180,361	5,200,046	5,219,806	5,239,641	5,259,552	5,279,538	5,299,601	5,319,739	5,339,954	5,360,246
Multi- Residential	1,048,542	1,051,772	1,055,011	1,058,260	1,061,520	1,064,789	1,068,069	1,071,359	1,074,658	1,077,968
Commercial	3,585,947	3,593,190	3,600,449	3,607,722	3,615,009	3,622,312	3,629,629	3,636,960	3,644,307	3,651,669
Industrial	6,162,243	6,305,269	6,451,614	6,601,356	6,754,574	6,911,347	7,071,760	7,235,895	7,403,840	7,575,684
Government	954,184	970,310	986,708	1,003,383	1,020,341	1,037,584	1,055,120	1,072,951	1,091,084	1,109,523
Recycled	1,982,382	2,024,012	2,066,516	2,109,913	2,154,221	2,199,460	2,245,649	2,292,807	2,340,956	2,390,116
Other	98,963	99,268	99,574	99,880	100,188	100,497	100,806	101,117	101,428	101,740
Unaccounted	1,770,589	1,777,409	1,784,263	1,791,150	1,798,071	1,805,026	1,812,015	1,819,039	1,826,097	1,833,191
Total	20,783,211	21,021,276	21,263,941	21,511,307	21,763,476	22,020,553	22,282,647	22,549,867	22,822,325	23,100,138

Customer Type	Demand 2011(AF)	Demand 2012(AF)	Demand 2013(AF)	Demand 2014(AF)	Demand 2015(AF)	Demand 2016(AF)	Demand 2017(AF)	Demand 2018(AF)	Demand 2019(AF)	Demand 2020(AF)
Resident	11,893	11,938	11,983	12,029	12,074	12,120	12,166	12,213	12,259	12,306
Multi- Residential	2,407	2,415	2,422	2,429	2,437	2,444	2,452	2,460	2,467	2,475
Commercial	8,232	8,249	8,266	8,282	8,299	8,316	8,333	8,349	8,366	8,383
Industrial	14,147	14,475	14,811	15,155	15,506	15,866	16,235	16,611	16,997	17,391
Government	2,191	2,228	2,265	2,303	2,342	2,382	2,422	2,463	2,505	2,547
Recycled	4,551	4,647	4,744	4,844	4,945	5,049	5,155	5,264	5,374	5,487
Other	227	228	229	229	230	231	231	232	233	234
Unaccounted	4,065	4,080	4,096	4,112	4,128	4,144	4,160	4,176	4,192	4,208
Total	47,712	48,259	48,816	49,384	49,962	50,553	51,154	51,768	52,393	53,031

**California Water Service Company - Dominguez District
Water Supply and Demand Analysis and Projections**

2020's Projections

Scenario #3: Based on Maintaining Growth at the

- 10-Year
- 5-Year

Average Annual Growth and

- Low
- Average
- High

Demand per Service for each Customer Class.

Customer Type	Projected Services 2021	Projected Services 2022	Projected Services 2023	Projected Services 2024	Projected Services 2025	Projected Services 2026	Projected Services 2027	Projected Services 2028	Projected Services 2029	Projected Services 2030
Resident	29,822	29,935	30,049	30,163	30,278	30,393	30,508	30,624	30,741	30,857
Multi- Residential	722	724	727	729	731	733	736	738	740	742
Commercial	2,933	2,939	2,945	2,951	2,957	2,963	2,969	2,975	2,981	2,987
Industrial	211	216	221	226	231	236	242	247	253	259
Government	352	358	364	370	377	383	389	396	403	409
Recycled	14	14	15	15	15	16	16	16	17	17
Other	27	27	27	27	27	27	27	28	28	28
Total	34,081	34,214	34,347	34,481	34,616	34,751	34,888	35,024	35,162	35,300

Various service growth percentages have been adjusted due to wide fluctuation of values and anticipated conversion between customer classes.

Customer Type	Demand 2021(ccf)	Demand 2022(ccf)	Demand 2023(ccf)	Demand 2024(ccf)	Demand 2025(ccf)	Demand 2026(ccf)	Demand 2027(ccf)	Demand 2028(ccf)	Demand 2029(ccf)	Demand 2030(ccf)
Resident	5,380,615	5,401,061	5,421,585	5,442,187	5,462,867	5,483,626	5,504,464	5,525,381	5,546,378	5,567,454
Multi- Residential	1,081,288	1,084,619	1,087,959	1,091,310	1,094,672	1,098,043	1,101,425	1,104,818	1,108,220	1,111,634
Commercial	3,659,045	3,666,436	3,673,842	3,681,264	3,688,700	3,696,151	3,703,617	3,711,098	3,718,595	3,726,106
Industrial	7,751,515	7,931,428	8,115,516	8,303,877	8,496,610	8,693,817	8,895,600	9,102,067	9,313,326	9,529,488
Government	1,128,274	1,147,342	1,166,732	1,186,450	1,206,501	1,226,891	1,247,625	1,268,710	1,290,151	1,311,955
Recycled	2,440,309	2,491,555	2,543,878	2,597,299	2,651,843	2,707,531	2,764,390	2,822,442	2,881,713	2,942,229
Other	102,054	102,368	102,683	103,000	103,317	103,635	103,954	104,274	104,596	104,918
Unaccounted	1,840,321	1,847,486	1,854,687	1,861,925	1,869,200	1,876,512	1,883,861	1,891,249	1,898,674	1,906,139
Total	23,383,421	23,672,295	23,966,884	24,267,313	24,573,710	24,886,206	25,204,937	25,530,039	25,861,653	26,199,923

Customer Type	Demand 2021(AF)	Demand 2022(AF)	Demand 2023(AF)	Demand 2024(AF)	Demand 2025(AF)	Demand 2026(AF)	Demand 2027(AF)	Demand 2028(AF)	Demand 2029(AF)	Demand 2030(AF)
Resident	12,352	12,399	12,446	12,494	12,541	12,589	12,637	12,685	12,733	12,781
Multi- Residential	2,482	2,490	2,498	2,505	2,513	2,521	2,529	2,536	2,544	2,552
Commercial	8,400	8,417	8,434	8,451	8,468	8,485	8,502	8,520	8,537	8,554
Industrial	17,795	18,208	18,631	19,063	19,506	19,958	20,422	20,896	21,381	21,877
Government	2,590	2,634	2,678	2,724	2,770	2,817	2,864	2,913	2,962	3,012
Recycled	5,602	5,720	5,840	5,963	6,088	6,216	6,346	6,479	6,616	6,754
Other	234	235	236	236	237	238	239	239	240	241
Unaccounted	4,225	4,241	4,258	4,274	4,291	4,308	4,325	4,342	4,359	4,376
Total	53,681	54,344	55,021	55,710	56,414	57,131	57,863	58,609	59,371	60,147

**California Water Service Company - Dominguez District
Water Supply and Demand Analysis and Projections**

2030's Projections

Scenario #3: Based on Maintaining Growth at the

- 10-Year
- 5-Year

Average Annual Growth and

- Low
- Average
- High

Demand per Service for each Customer Class.

Customer Type	Projected Services 2031	Projected Services 2032	Projected Services 2033	Projected Services 2034	Projected Services 2035	Projected Services 2036	Projected Services 2037	Projected Services 2038	Projected Services 2039	Projected Services 2040
Resident	30,975	31,092	31,211	31,329	31,448	31,568	31,688	31,808	31,929	32,050
Multi- Residential	745	747	749	752	754	756	759	761	763	766
Commercial	2,993	2,999	3,005	3,011	3,017	3,023	3,029	3,036	3,042	3,048
Industrial	265	271	278	284	291	297	304	311	318	326
Government	416	423	431	438	445	453	460	468	476	484
Recycled	17	18	18	18	19	19	20	20	21	21
Other	28	28	28	28	28	28	28	28	29	29
Total	35,439	35,579	35,719	35,860	36,002	36,145	36,288	36,433	36,578	36,723

Various service growth percentages have been adjusted due to wide fluctuation of values and anticipated conversion between customer classes.

Customer Type	Demand 2031(ccf)	Demand 2032(ccf)	Demand 2033(ccf)	Demand 2034(ccf)	Demand 2035(ccf)	Demand 2036(ccf)	Demand 2037(ccf)	Demand 2038(ccf)	Demand 2039(ccf)	Demand 2040(ccf)
Resident	5,588,610	5,609,847	5,631,164	5,652,563	5,674,042	5,695,604	5,717,247	5,738,973	5,760,781	5,782,672
Multi- Residential	1,115,058	1,118,492	1,121,937	1,125,392	1,128,859	1,132,335	1,135,823	1,139,321	1,142,831	1,146,350
Commercial	3,733,633	3,741,175	3,748,732	3,756,305	3,763,892	3,771,496	3,779,114	3,786,748	3,794,397	3,802,062
Industrial	9,750,668	9,976,981	10,208,546	10,445,487	10,687,927	10,935,993	11,189,818	11,449,533	11,715,277	11,987,189
Government	1,334,127	1,356,674	1,379,601	1,402,917	1,426,626	1,450,736	1,475,253	1,500,185	1,525,538	1,551,320
Recycled	3,004,016	3,067,100	3,131,509	3,197,271	3,264,414	3,332,966	3,402,959	3,474,421	3,547,384	3,621,879
Other	105,241	105,565	105,890	106,216	106,544	106,872	107,201	107,531	107,862	108,194
Unaccounted	1,913,642	1,921,185	1,928,767	1,936,389	1,944,053	1,951,757	1,959,502	1,967,289	1,975,118	1,982,990
Total	26,544,994	26,897,018	27,256,148	27,622,540	27,996,356	28,377,759	28,766,917	29,164,001	29,569,188	29,982,656

Customer Type	Demand 2031(AF)	Demand 2032(AF)	Demand 2033(AF)	Demand 2034(AF)	Demand 2035(AF)	Demand 2036(AF)	Demand 2037(AF)	Demand 2038(AF)	Demand 2039(AF)	Demand 2040(AF)
Resident	12,830	12,879	12,927	12,977	13,026	13,075	13,125	13,175	13,225	13,275
Multi- Residential	2,560	2,568	2,576	2,584	2,592	2,600	2,608	2,616	2,624	2,632
Commercial	8,571	8,589	8,606	8,623	8,641	8,658	8,676	8,693	8,711	8,728
Industrial	22,385	22,904	23,436	23,980	24,536	25,106	25,688	26,285	26,895	27,519
Government	3,063	3,115	3,167	3,221	3,275	3,330	3,387	3,444	3,502	3,561
Recycled	6,896	7,041	7,189	7,340	7,494	7,651	7,812	7,976	8,144	8,315
Other	242	242	243	244	245	245	246	247	248	248
Unaccounted	4,393	4,410	4,428	4,445	4,463	4,481	4,498	4,516	4,534	4,552
Total	60,939	61,747	62,572	63,413	64,271	65,147	66,040	66,952	67,882	68,831

California Water Service Company - Dominguez District

Water Supply and Demand Analysis and Projections

Scenario #4: Based on Maintaining Growth at the 10-Year Average Annual Growth
 5-Year

Summary of Historical Growth Rate from Worksheet 2

Customer Type	5 Yr. Avg. Historical Growth Rate	Individual Growth Rate Selected	Notes
Single Family Residential	0.376%	0.376%	Historical growth rate used
Multi Family Residential	-5.366%	0.152%	Historical growth rate used
Commercial	-0.626%	-0.626%	Historical growth rate used
Industrial	0.146%	0.146%	Historical growth rate used
Government	1.766%	1.766%	Historical growth rate used
Recycled Water	2.000%	2.100%	Percent changed to gain 6 service connections by 2030
Other	-1.144%	0.152%	Percent changed to overall growth rate
Overall	0.152%	0.310%	

California Water Service Company - Dominguez District
Water Supply and Demand Analysis and Projections

30-year projection Summary

Scenario #4: Based on Maintaining Growth at the 10-Year Average Annual Growth
 5-Year

Customer Type	Projected Services 2010	Projected Services 2015	Projected Services 2020	Projected Services 2025	Projected Services 2030	Projected Services 2035	Projected Services 2040	Services projected to be added from 2010 - 2040
Single Family Residential	28,602	29,144	29,696	30,258	30,832	31,416	32,011	3,409
Multi Family Residential	697	702	708	713	719	724	730	32
Commercial	2,845	2,757	2,672	2,589	2,509	2,432	2,357	-489
Industrial	160	161	163	164	165	166	167	7
Government	293	320	349	381	416	454	496	202
Recycled Water	11	12	14	15	17	19	21	10
Other	26	26	26	27	27	27	27	1
Total	32,635	33,123	33,628	34,148	34,684	35,237	35,808	3,173

California Water Service Company - Dominguez District

Water Supply and Demand Analysis and Projections

Worksheet 13

2000's Projections

Scenario #4: Based on Maintaining Growth at the 10-Year Average Annual Growth
 5-Year

Customer Type	Actual Services 2001	Actual Services 2002	Actual Services 2003	Actual Services 2004	Actual Services 2005	Actual Services 2006	Actual Services 2007	Actual Services 2008	Actual Services 2009	Projected Services 2010
Resident	27,668	27,713	27,725	27,965	28,136	28,210	28,220	28,334	28,495	28,602
Multi- Residential	936	942	930	926	920	912	910	802	696	697
Commercial	2,876	2,936	2,941	2,956	2,979	2,996	2,998	2,937	2,863	2,845
Industrial	132	137	144	159	160	166	165	163	160	160
Government	249	264	261	264	264	265	270	279	288	293
Recycled	4	4	8	10	10	11	11	11	11	11
Other	50	52	45	31	37	32	27	20	26	26
Total	31,915	32,048	32,054	32,311	32,506	32,592	32,601	32,546	32,539	32,635

2010's Projections

Customer Type	Projected Services 2011	Projected Services 2012	Projected Services 2013	Projected Services 2014	Projected Services 2015	Projected Services 2016	Projected Services 2017	Projected Services 2018	Projected Services 2019	Projected Services 2020
Resident	28,710	28,818	28,926	29,035	29,144	29,254	29,363	29,474	29,585	29,696
Multi- Residential	698	699	700	701	702	703	705	706	707	708
Commercial	2,827	2,810	2,792	2,775	2,757	2,740	2,723	2,706	2,689	2,672
Industrial	160	161	161	161	161	162	162	162	162	163
Government	298	304	309	314	320	326	331	337	343	349
Recycled	11	12	12	12	12	13	13	13	14	14
Other	26	26	26	26	26	26	26	26	26	26
Total	32,731	32,828	32,926	33,024	33,123	33,223	33,323	33,424	33,526	33,628

California Water Service Company - Dominguez District

Water Supply and Demand Analysis and Projections

Worksheet 13

2020's Projections

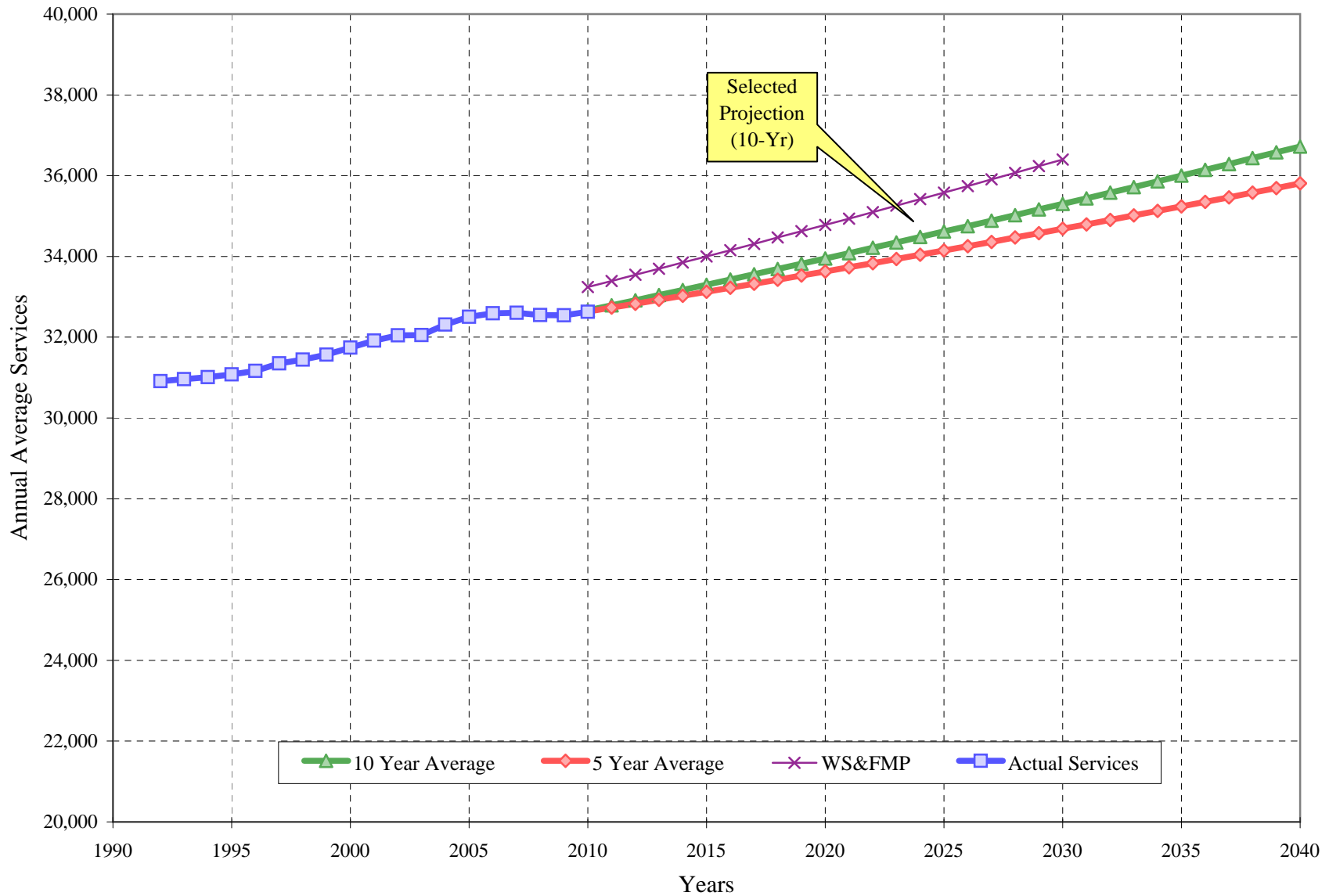
Scenario #4: Based on Maintaining Growth at the 10-Year Average Annual Growth
 5-Year

Customer Type	Projected Services 2021	Projected Services 2022	Projected Services 2023	Projected Services 2024	Projected Services 2025	Projected Services 2026	Projected Services 2027	Projected Services 2028	Projected Services 2029	Projected Services 2030
Resident	29,808	29,920	30,032	30,145	30,258	30,372	30,486	30,601	30,716	30,832
Multi- Residential	709	710	711	712	713	714	715	716	717	719
Commercial	2,655	2,639	2,622	2,606	2,589	2,573	2,557	2,541	2,525	2,509
Industrial	163	163	163	164	164	164	164	164	165	165
Government	355	362	368	374	381	388	395	402	409	416
Recycled	14	14	15	15	15	16	16	16	17	17
Other	26	27	27	27	27	27	27	27	27	27
Total	33,730	33,834	33,938	34,042	34,148	34,254	34,360	34,468	34,576	34,684

2030's Projections

Customer Type	Projected Services 2031	Projected Services 2032	Projected Services 2033	Projected Services 2034	Projected Services 2035	Projected Services 2036	Projected Services 2037	Projected Services 2038	Projected Services 2039	Projected Services 2040
Resident	30,948	31,064	31,181	31,298	31,416	31,534	31,652	31,771	31,891	32,011
Multi- Residential	720	721	722	723	724	725	726	727	728	730
Commercial	2,494	2,478	2,462	2,447	2,432	2,416	2,401	2,386	2,371	2,357
Industrial	165	165	166	166	166	166	167	167	167	167
Government	423	431	438	446	454	462	470	478	487	496
Recycled	17	18	18	18	19	19	20	20	21	21
Other	27	27	27	27	27	27	27	27	27	27
Total	34,794	34,904	35,014	35,125	35,237	35,350	35,464	35,578	35,692	35,808

Dominguez District Historical & Projected Services



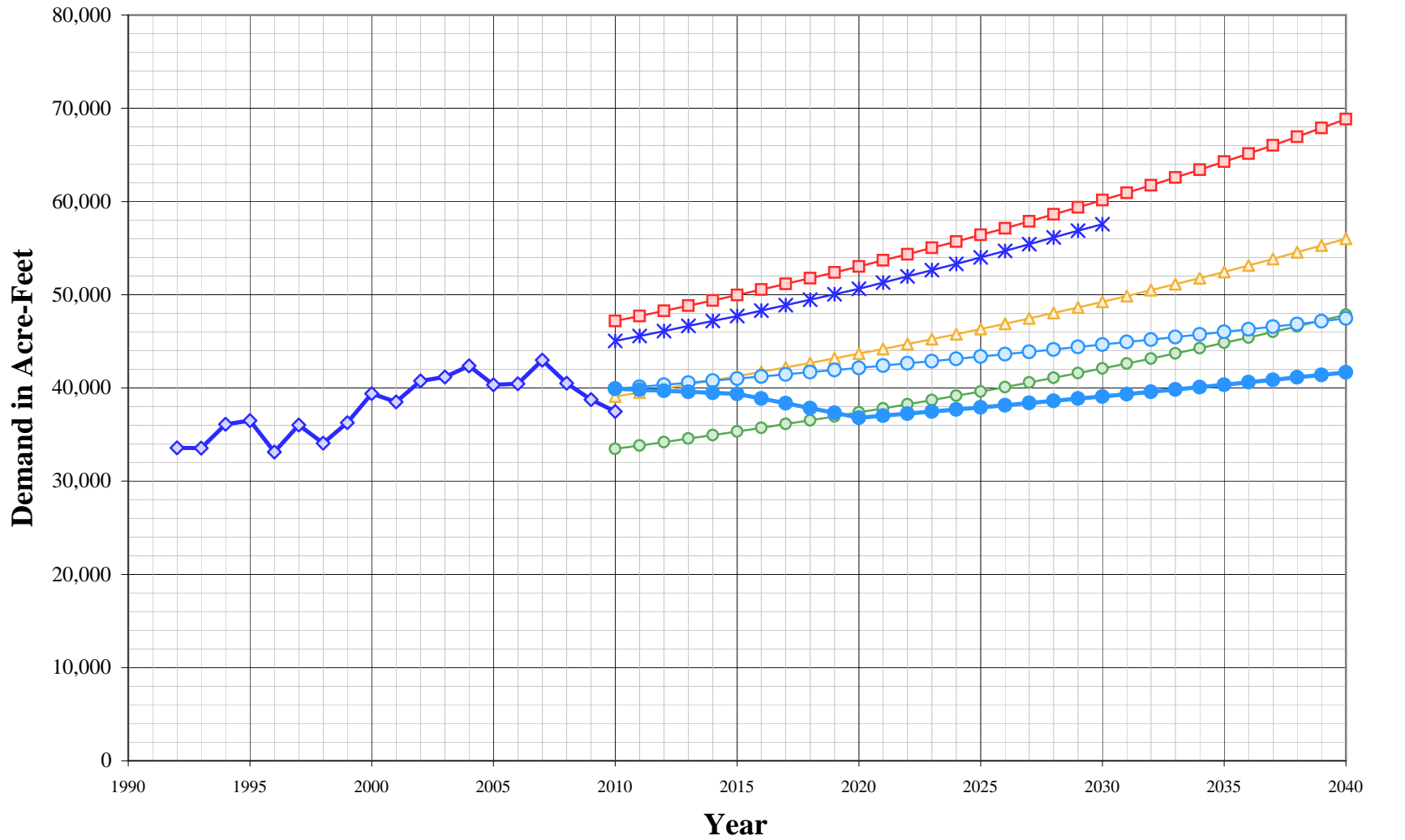
California Water Service Company - Dominguez District
Water Supply and Demand Analysis and Projections
Projected Annual Average Services

Year	Actual Services	Projected Services		
		5 Year Average	10 Year Average	WS&FMP
1992	30,912			
1993	30,962			
1994	31,012			
1995	31,081			
1996	31,163			
1997	31,354			
1998	31,443			
1999	31,571			
2000	31,743			
2001	31,915			
2002	32,048			
2003	32,054			
2004	32,311			
2005	32,506			
2006	32,592			
2007	32,601			
2008	32,546			
2009	32,539			
2010	32,629	32,635	32,664	33,243
2011		32,731	32,790	33,394
2012		32,828	32,916	33,546
2013		32,926	33,043	33,697
2014		33,024	33,171	33,849
2015		33,123	33,299	34,000
2016		33,223	33,428	34,156

Year	Actual Services	Projected Services		
		5 Year Average	10 Year Average	WS&FMP
2017		33,323	33,557	34,311
2018		33,424	33,687	34,467
2019		33,526	33,818	34,622
2020		33,628	33,949	34,778
2021		33,730	34,081	34,938
2022		33,834	34,214	35,098
2023		33,938	34,347	35,258
2024		34,042	34,481	35,418
2025		34,148	34,616	35,578
2026		34,254	34,751	35,743
2027		34,360	34,888	35,907
2028		34,468	35,024	36,072
2029		34,576	35,162	36,236
2030		34,684	35,300	36,401
2031		34,794	35,439	
2032		34,904	35,579	
2033		35,014	35,719	
2034		35,125	35,860	
2035		35,237	36,002	
2036		35,350	36,145	
2037		35,464	36,288	
2038		35,578	36,433	
2039		35,692	36,578	
2040		35,808	36,723	

Dominguez District

Historical & Projected Demand



◆ Actual Demand
 ● Projection Low
 ▲ Projection Average
 ■ Projection High
 ○ Unadjusted Baseline Demand
 ✱ WS&FMP Projected Demand
 ● Target Demand

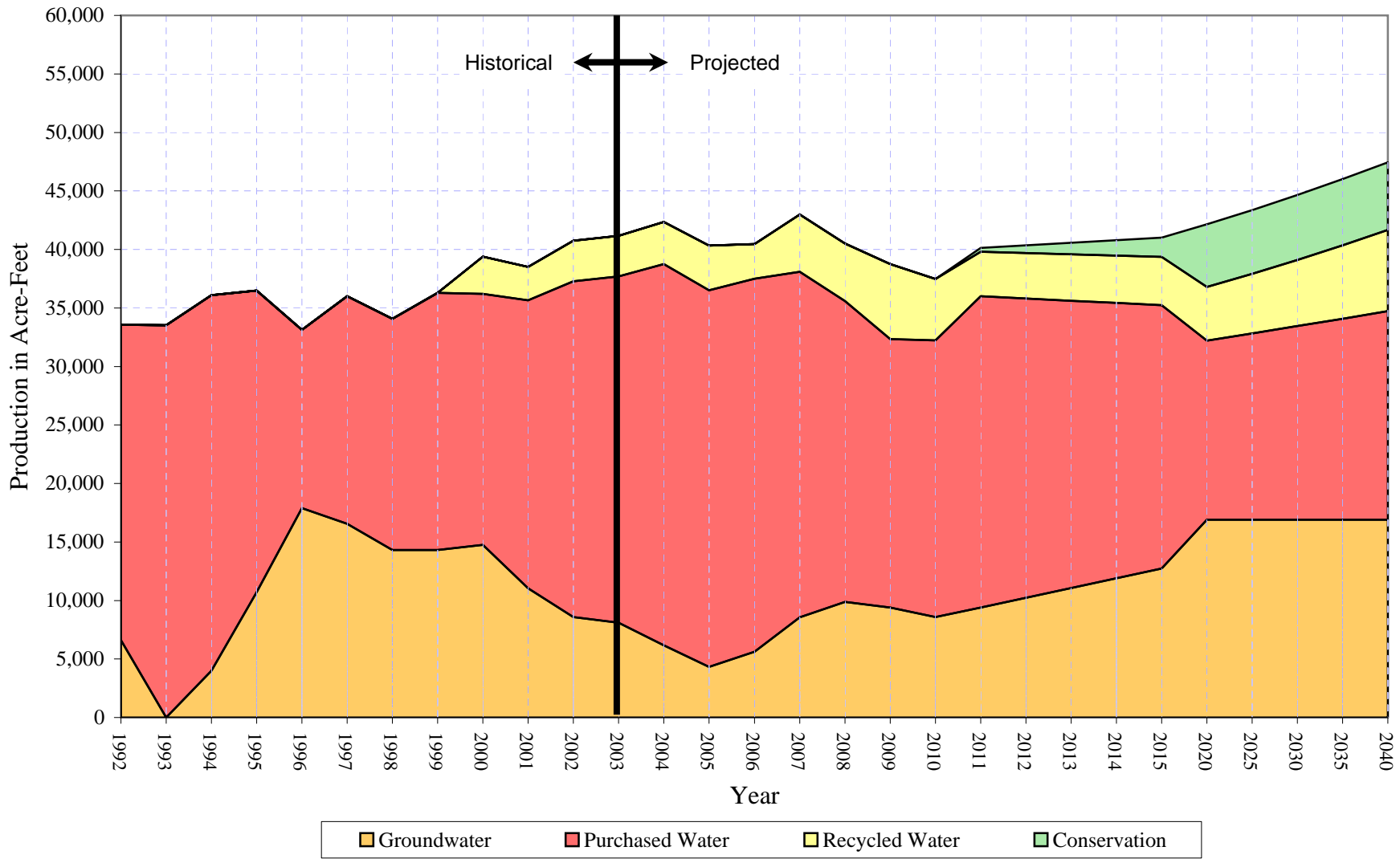
California Water Service Company - Dominguez District
Water Supply and Demand Analysis and Projections
Projected Demand in Acre-Feet

Water	Actual Demand	Projection			Unadjusted Baseline Demand	Target Demand	WS&FMP
		Low	Average	High			
1992	33,572						
1993	33,529						
1994	36,096						
1995	36,497						
1996	33,127						
1997	36,014						
1998	34,069						
1999	36,283						
2000	39,380						
2001	38,502						
2002	40,742						
2003	41,161						
2004	42,356						
2005	40,337						
2006	40,459						
2007	42,976						
2008	40,514						
2009	38,745						
2010	37,471	33,471	39,074	47,176	39,909	39,909	45,030
2011		33,829	39,495	47,712	40,125	39,801	45,568
2012		34,193	39,924	48,259	40,341	39,691	46,105
2013		34,565	40,362	48,816	40,561	39,583	46,643
2014		34,943	40,807	49,384	40,780	39,471	47,180
2015		35,329	41,262	49,962	41,003	39,362	47,718
2016		35,722	41,724	50,553	41,228	38,856	48,300

Water	Actual Demand	Projection			Unadjusted Baseline Demand	Target Demand	WS&FMP
		Low	Average	High			
2017		36,122	42,196	51,154	41,458	38,348	48,883
2018		36,530	42,677	51,768	41,687	37,835	49,465
2019		36,947	43,167	52,393	41,920	37,321	50,048
2020		37,371	43,667	53,031	42,155	36,802	50,630
2021		37,803	44,176	53,681	42,392	37,020	51,302
2022		38,244	44,695	54,344	42,632	37,239	51,974
2023		38,694	45,225	55,021	42,875	37,462	52,647
2024		39,152	45,765	55,710	43,121	37,688	53,318
2025		39,619	46,315	56,414	43,369	37,915	53,991
2026		40,096	46,876	57,131	43,620	38,145	54,708
2027		40,582	47,448	57,863	43,872	38,377	55,425
2028		41,077	48,032	58,609	44,129	38,614	56,141
2029		41,582	48,627	59,371	44,389	38,852	56,858
2030		42,098	49,234	60,147	44,651	39,094	57,575
2031		42,623	49,853	60,939	44,916	39,337	
2032		43,159	50,484	61,747	45,185	39,586	
2033		43,706	51,128	62,572	45,455	39,834	
2034		44,264	51,785	63,413	45,729	40,088	
2035		44,833	52,455	64,271	46,006	40,344	
2036		45,413	53,138	65,147	46,289	40,605	
2037		46,005	53,836	66,040	46,572	40,867	
2038		46,609	54,547	66,952	46,860	41,133	
2039		47,225	55,272	67,882	47,151	41,403	
2040		47,853	56,013	68,831	47,447	41,677	

Dominguez District

Historical and Projected Distribution of Demand by Source



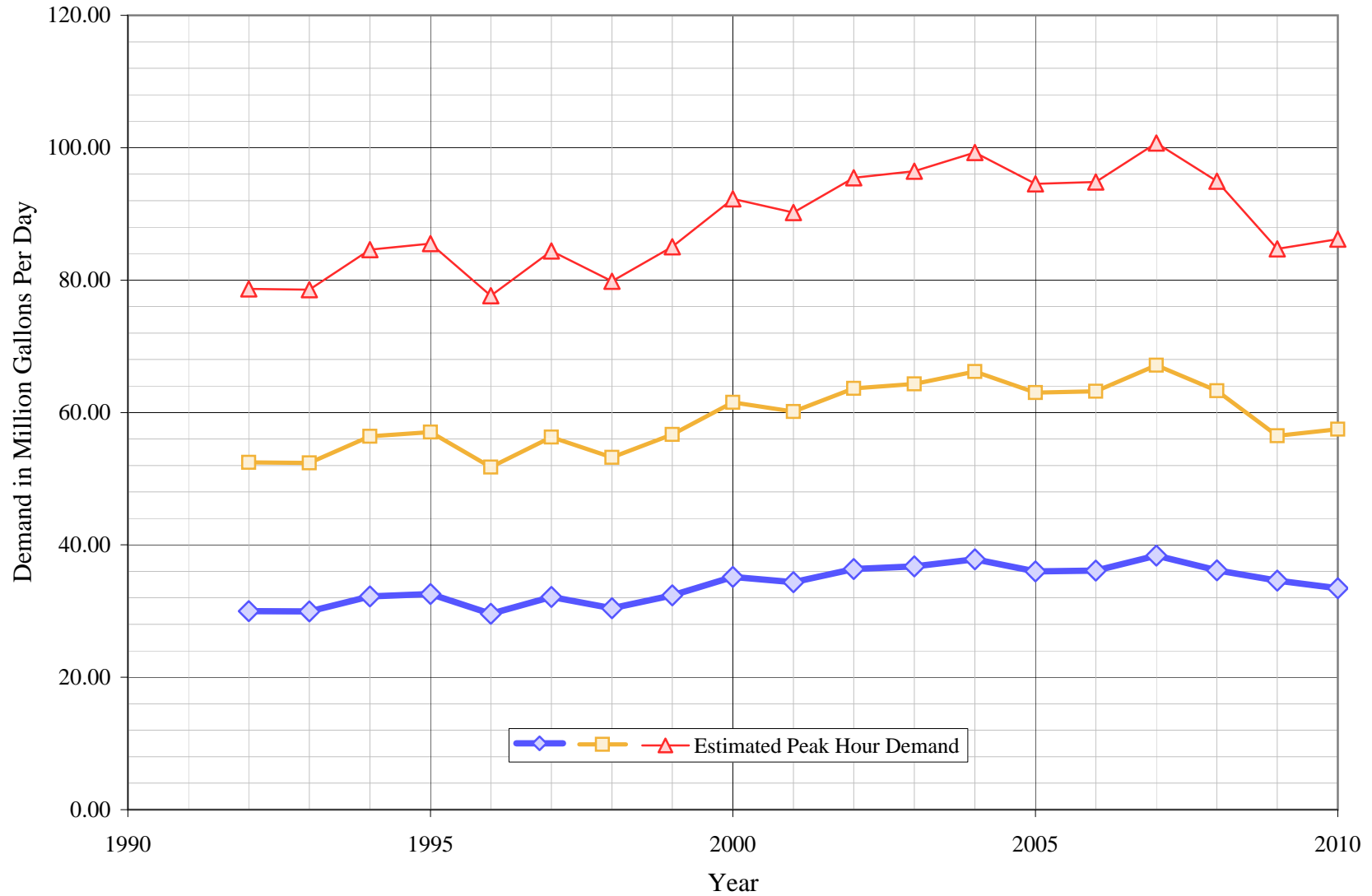
California Water Service Company - Dominguez District
Water Supply and Demand Analysis and Projections
Historical and Projected Distribution of Demand by Source

Worksheet 17

Year	Purchased Water		Recycled Water		Ground Water		Conservation		Total	
	(kGal)	(AF)	(kGal)	(AF)	(kGal)	(AF)	(kGal)	(AF)	(kGal)	(AF)
1992	8,786,654	26,965	0	0	2,152,902	6,607	0	0	10,939,556	33,572
1993	10,925,344	33,529	0	0	0	0	0	0	10,925,344	33,529
1994	10,456,613	32,090	0	0	1,305,281	4,006	0	0	11,761,894	36,096
1995	8,401,780	25,784	0	0	3,490,948	10,713	0	0	11,892,728	36,497
1996	4,964,018	15,234	0	0	5,830,490	17,893	0	0	10,794,508	33,127
1997	6,342,385	19,464	0	0	5,392,878	16,550	0	0	11,735,263	36,014
1998	6,438,510	19,759	0	0	4,662,926	14,310	0	0	11,101,436	34,069
1999	7,162,253	21,980	0	0	4,660,682	14,303	0	0	11,822,935	36,283
2000	6,990,701	21,454	1,032,842	3,170	4,808,379	14,756	0	0	12,831,922	39,380
2001	8,023,237	24,622	927,781	2,847	3,594,805	11,032	0	0	12,545,823	38,502
2002	9,350,030	28,694	1,126,497	3,457	2,799,177	8,590	0	0	13,275,704	40,742
2003	9,645,048	29,600	1,128,073	3,462	2,639,173	8,099	0	0	13,412,294	41,161
2004	10,612,882	32,570	1,178,239	3,616	2,010,667	6,171	0	0	13,801,788	42,356
2005	10,487,157	32,184	1,250,796	3,839	1,405,978	4,315	0	0	13,143,931	40,337
2006	10,389,893	31,885	964,829	2,961	1,828,734	5,612	0	0	13,183,456	40,459
2007	9,628,366	29,548	1,588,543	4,875	2,786,701	8,552	0	0	14,003,610	42,976
2008	8,382,928	25,726	1,602,684	4,918	3,215,947	9,869	0	0	13,201,559	40,514
2009	7,472,082	22,931	2,090,746	6,416	3,062,175	9,398	0	0	12,625,003	38,745
2010	7,704,806	23,645	1,711,021	5,251	2,794,116	8,575	0	0	12,209,943	37,471
2011	8,664,763	26,591	1,239,492	3,804	3,065,344	9,407	105,392	323	12,969,599	40,125
2012	8,331,667	25,568	1,265,522	3,884	3,336,529	10,239	211,573	649	12,933,718	40,341
2013	7,998,581	24,546	1,292,097	3,965	3,607,714	11,071	318,563	978	12,898,392	40,561
2014	7,663,901	23,519	1,319,232	4,048	3,878,898	11,904	426,328	1,308	12,862,031	40,780
2015	7,329,216	22,492	1,346,935	4,134	4,150,083	12,736	534,917	1,642	12,826,234	41,003
2020	4,991,908	15,319	1,494,430	4,586	5,506,007	16,897	1,744,207	5,353	11,992,344	42,155
2025	5,190,857	15,930	1,658,075	5,088	5,506,007	16,897	1,777,262	5,454	12,354,939	43,369
2030	5,393,321	16,551	1,839,640	5,646	5,506,007	16,897	1,810,901	5,557	12,738,969	44,651
2035	5,599,301	17,183	2,041,087	6,264	5,506,007	16,897	1,845,124	5,662	13,146,395	46,006
2040	5,810,201	17,831	2,264,594	6,950	5,506,007	16,897	1,880,165	5,770	13,580,802	47,447

Dominguez District

Average Day, Maximum Day, & Peak Hour Demand



California Water Service Company - Dominguez District

Water Supply and Demand Analysis and Projections

Historical and Projected Average Day, Maximum Day, and Peak Demand

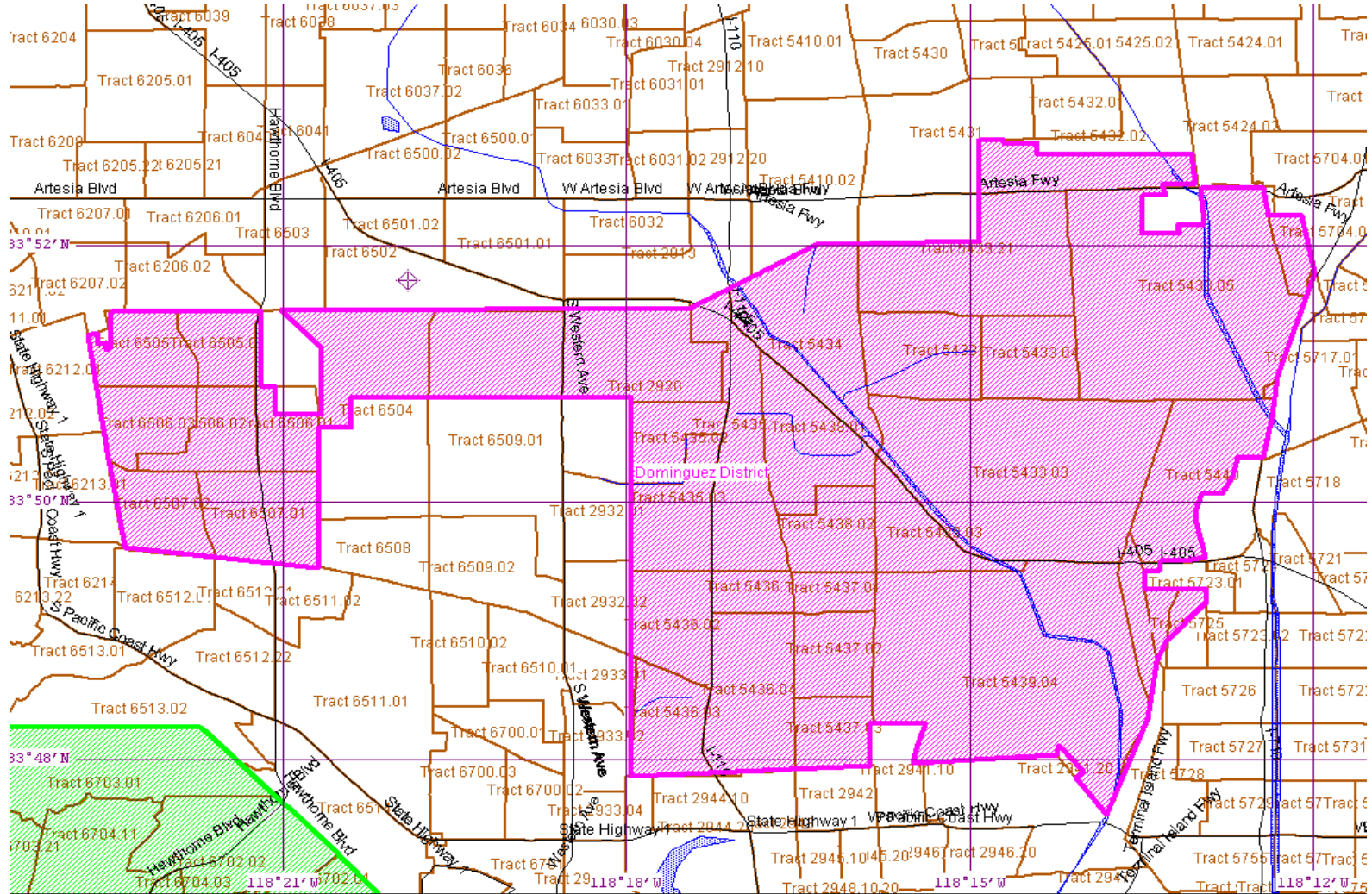
Year	Historical Annual Demand		Average Day Demand		Maximum Day Demand		MDD ADD Ratio	Estimated Peak Hour Demand		PHD MDD Ratio	PHD ADD Ratio	Measured Peak Hour Demand		PHD MDD Ratio
	(AFY)	(MGY)	(MGD)	(GPD)	(MGD)	(GPD)		(MGD)	(GPM)			(MGD)	(GPM)	
1992	33,572	10,940	29.97	970	52.45	1,697	1.75	78.67	54,635	1.50	2.63			
1993	33,529	10,925	29.93	967	52.38	1,692	1.75	78.57	54,564	1.50	2.63			
1994	36,096	11,762	32.22	1,039	56.39	1,818	1.75	84.59	58,742	1.50	2.63			
1995	36,497	11,893	32.58	1,048	57.02	1,835	1.75	85.53	59,396	1.50	2.63			
1996	33,127	10,794	29.57	949	51.75	1,661	1.75	77.63	53,911	1.50	2.63			
1997	36,014	11,735	32.15	1,025	56.26	1,795	1.75	84.40	58,609	1.50	2.63			
1998	34,069	11,101	30.41	967	53.23	1,693	1.75	79.84	55,444	1.50	2.63			
1999	36,283	11,823	32.39	1,026	56.69	1,795	1.75	85.03	59,047	1.50	2.63			
2000	39,380	12,832	35.16	1,108	61.52	1,938	1.75	92.28	64,086	1.50	2.63			
2001	38,502	12,546	34.37	1,077	60.15	1,885	1.75	90.23	62,657	1.50	2.63			
2002	40,742	13,276	36.37	1,135	63.65	1,986	1.75	95.48	66,303	1.50	2.63			
2003	41,161	13,412	36.75	1,146	64.31	2,006	1.75	96.46	66,985	1.50	2.63			
2004	42,356	13,802	37.81	1,170	66.17	2,048	1.75	99.26	68,930	1.50	2.63			
2005	40,337	13,144	36.01	1,108	63.02	1,939	1.75	94.53	65,645	1.50	2.63			
2006	40,459	13,183	36.12	1,108	63.21	1,939	1.75	94.81	65,842	1.50	2.63			
2007	42,976	14,004	38.37	1,177	67.14	2,059	1.75	100.71	69,938	1.50	2.63			
2008	40,514	13,202	36.17	1,111	63.29	1,945	1.75	94.94	65,932	1.50	2.63			
2009	38,745	12,625	34.59	1,063	56.49	1,736	1.63	84.73	58,841	1.50	2.45			
2010	37,471	12,210	33.45	1,025	57.46	1,761	1.72	86.19	59,853	1.50	2.58			
5 year Average (2006-2010)			35.74	1,097	61.52	1,888	1.72	92.28	64,081	1.50	2.58			
10 year Average (2001-2010)			36.00	1,112	62.49	1,930	1.74	93.73	65,093	1.50	2.60			

Note: Max Day data estimated from 1992 to 2008

California Water Service Company - Dominquez District

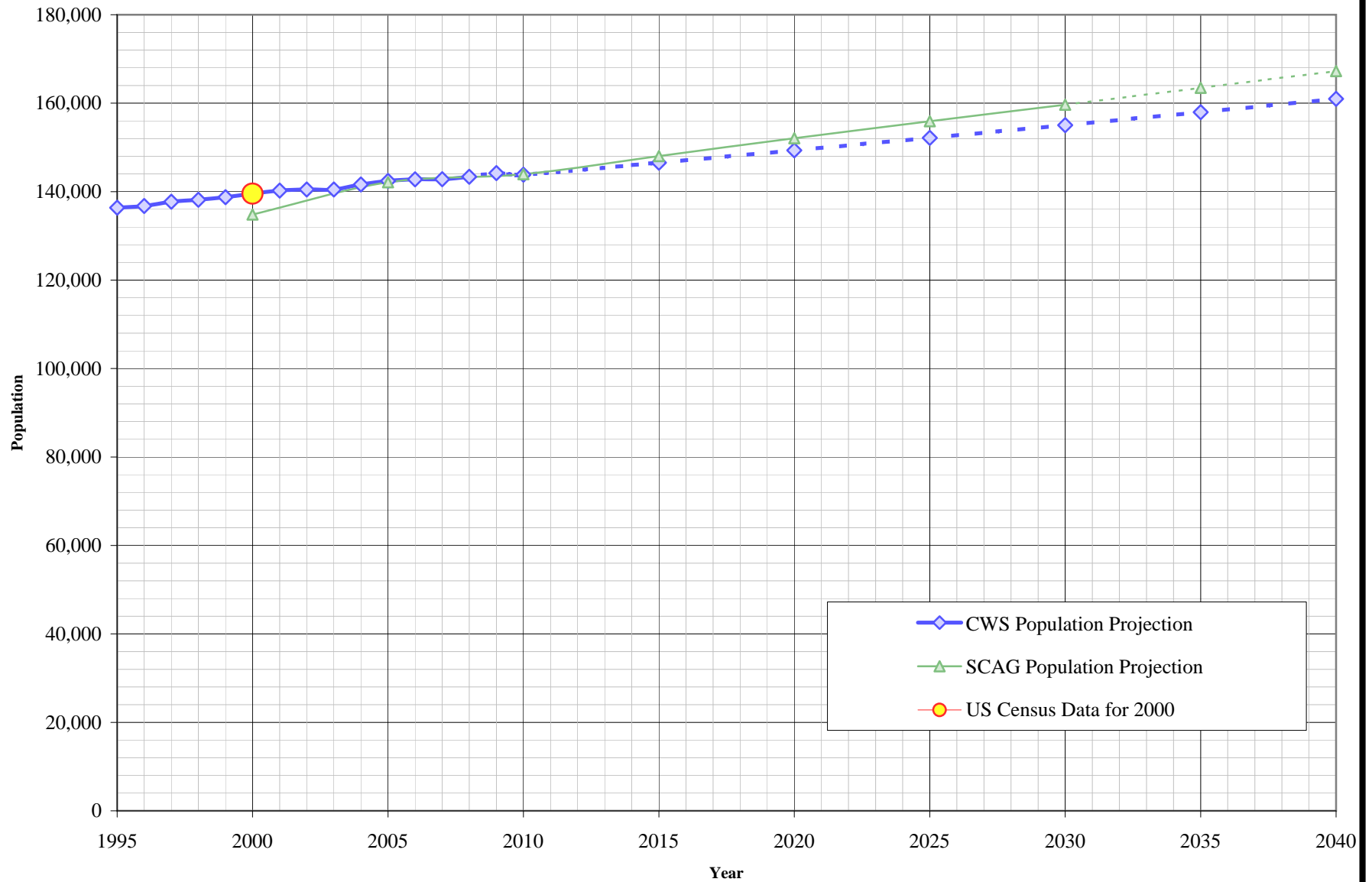
Water Supply and Demand Analysis and Projections

US Census 2000 Tract Map Summary



Census Tract Blocks	Population	Housing Units
889	139,558	44,631

Dominguez District Population Projections



California Water Service Company - Dominquez District

Water Supply and Demand Analysis and Projections

Population as of the 2000 Average Annual Services
 Estimated District Population based on 2000 U.S. Census Data & Annual Service Count

District Communities Served: Portions of Carson, Compton, Long Beach, Torrance
 and Unincorporated Los Angeles County

Year	Single Family Residential Services (DU)	Multi Family Residential			Total Residential Dwelling Units	Estimated District Population
		Services	Residential Units (DU)	Unit Density		
1995	27,038	864	1,689	1.95 (1)	28,727	136,370
1996	27,115	864	1,695	1.96 (1)	28,810	136,760
1997	27,291	875	1,723	1.97 (1)	29,014	137,730
1998	27,351	888	1,756	1.98 (1)	29,107	138,170
1999	27,436	903	1,792	1.98 (1)	29,228	138,750
2000	27,561	919	1,838	2.00	29,399	139,558
2001	27,668	936	1,872	2.00	29,540	140,230
2002	27,713	942	1,881	2.00	29,594	140,480
2003	27,725	930	1,873	2.01	29,598	140,500
2004	27,965	926	1,866	2.02	29,831	141,610
2005	28,136	920	1,865	2.03	30,001	142,420
2006	28,210	912	1,865	2.04	30,075	142,770
2007	28,220	910	1,865	2.05	30,085	142,810
2008	28,334	802	1,865	2.33	30,199	143,360
2009	28,509	696	1,865	2.33	30,374	144,190
2010	28,603	698	1,696	2.43	30,299	143,830
2015	29,151	709	1,722	2.43	30,873	146,550
2020	29,709	720	1,748	2.43	31,457	149,330
2025	30,278	731	1,775	2.43	32,053	152,160
2030	30,857	742	1,802	2.43	32,660	155,040
2035	31,448	754	1,830	2.43	33,278	157,970
2040	32,050	766	1,858	2.43	33,909	160,970

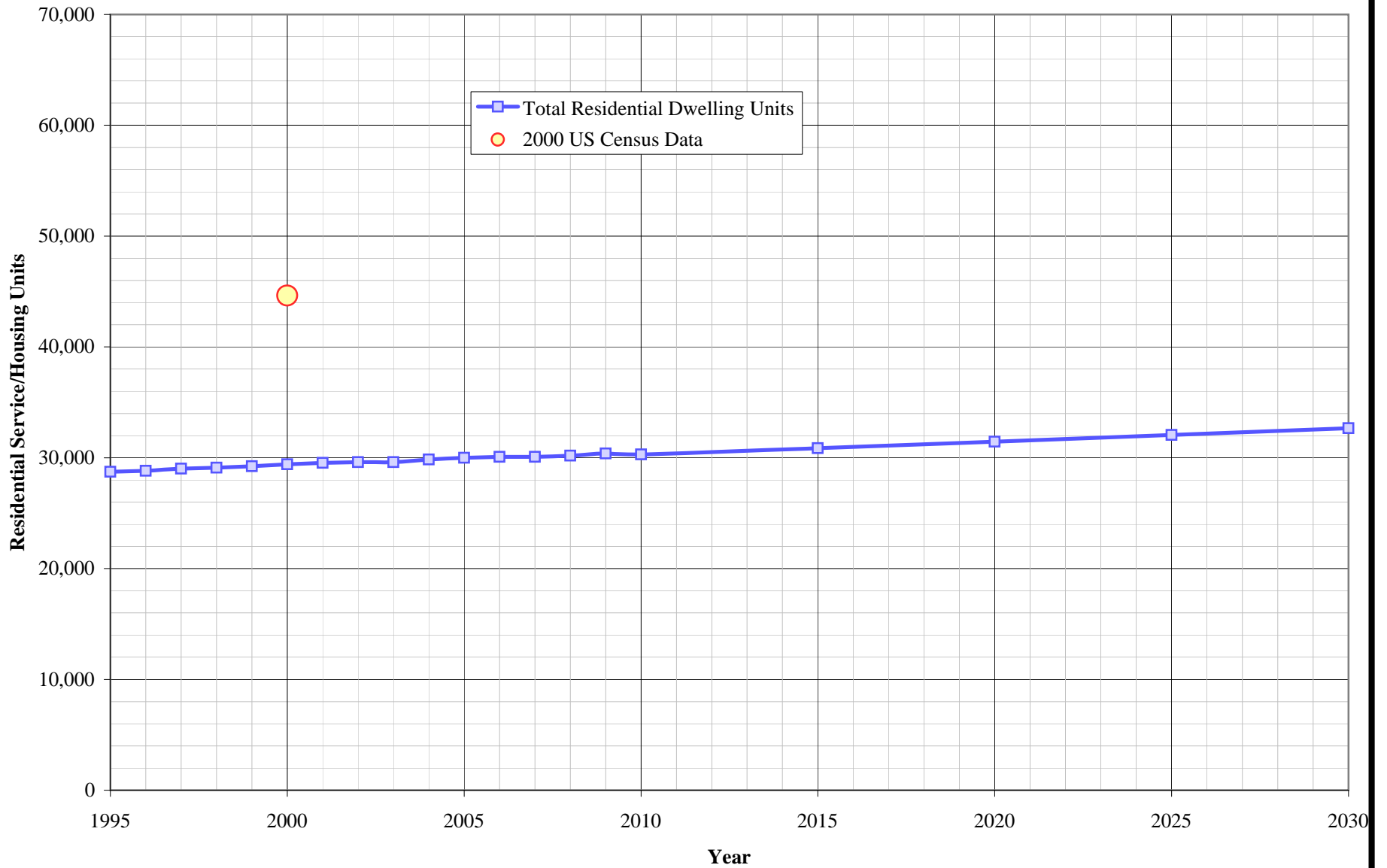
Projected

US Census 2000		Calculated Persons per CWS DU	Calculated Persons per US Census Housing Unit
Population	Housing Units		
139,558	44,631	4.747	3.127

139,558	44,631	4.747	3.127
---------	--------	-------	-------

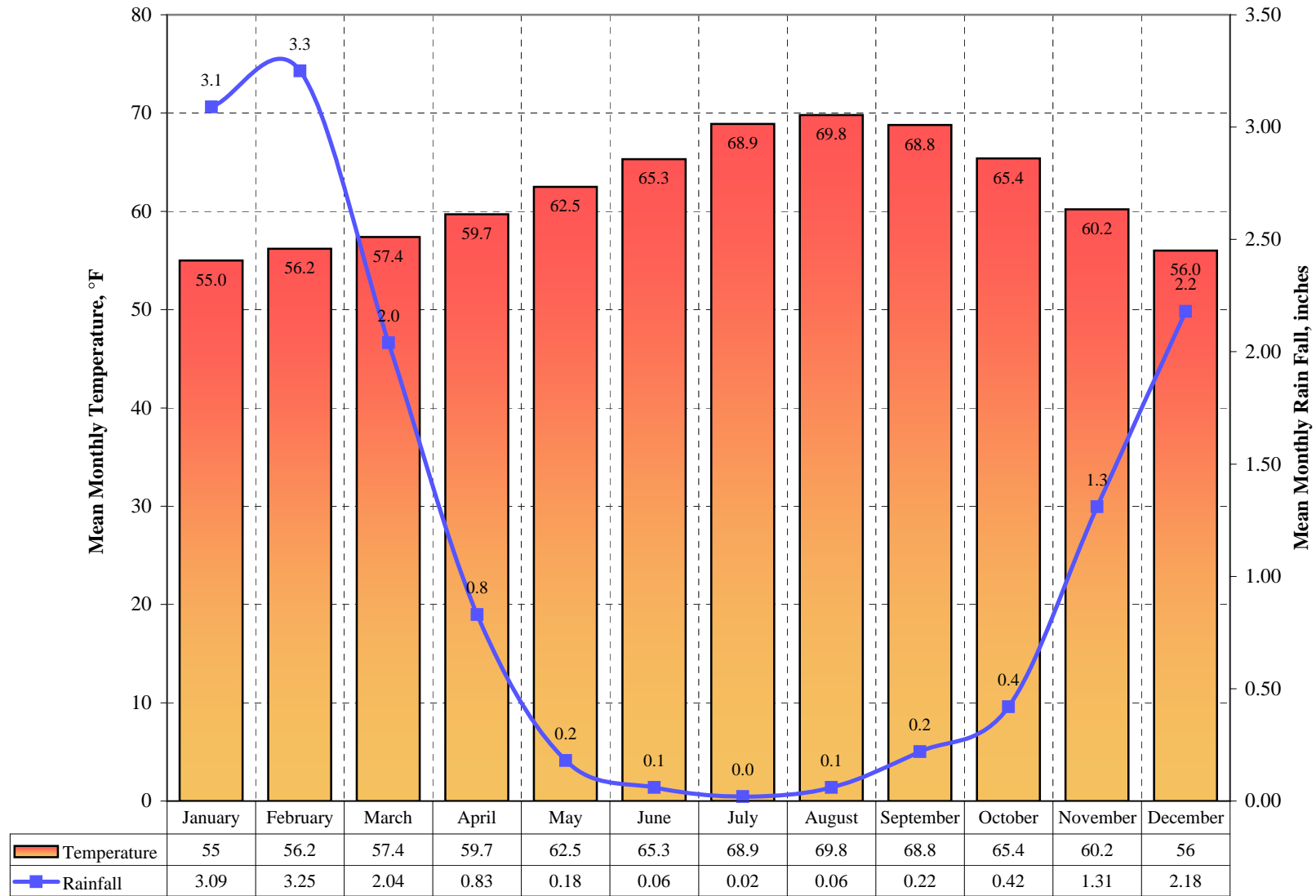
(1) Multifamily Units and Density estimated for 1995 to 1999

Dominguez District Housing Projection



Dominguez District

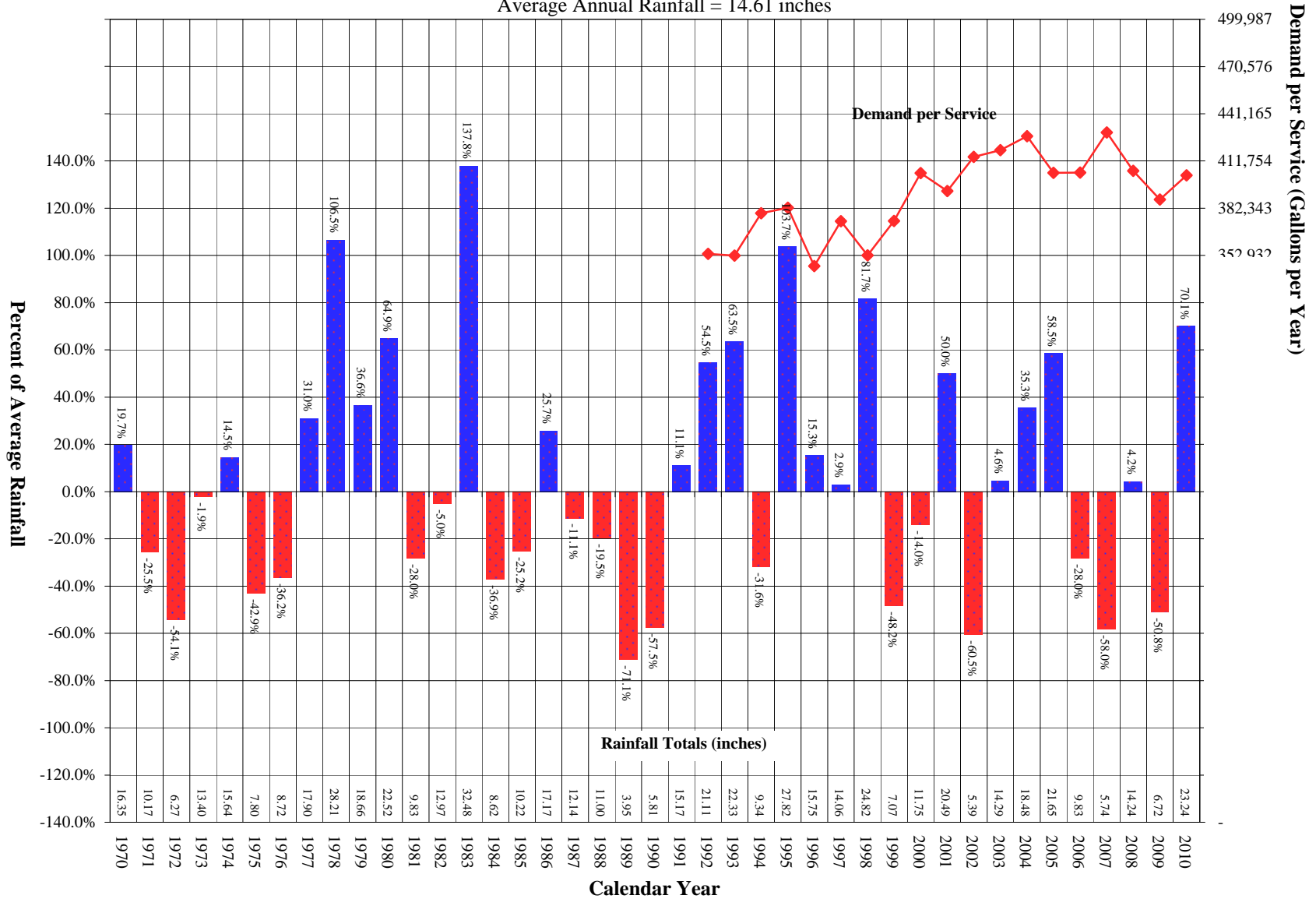
Mean Monthly Temperature and Rainfall



Dominguez District

Comparison of Annual Rainfall to Historical Average

Average Annual Rainfall = 14.61 inches



California Water Service Company - Dominguez
Water Supply and Demand Analysis and Projections

Worksheet 20

Temperature & Rainfall History

Year	Annual Average Temp.	Annual Average Rainfall	Rainfall Percent Variation	Demand per Service (Gal / Yr)	Percent of Average Demand	Year	Annual Average Temp.	Annual Average Rainfall	Rainfall Percent Variation	Demand per Service (Gal / Yr)	Percent of Average Demand
1970	61.8	16.35	19.7%			1995	62.5	27.82	103.7%	382,637	98.1%
1971	61.6	10.17	-25.5%			1996	63.3	15.75	15.3%	346,389	88.8%
1972	62.8	6.27	-54.1%			1997	64.5	14.06	2.9%	374,283	96.0%
1973	62.0	13.40	-1.9%			1998	62.2	24.82	81.7%	353,065	90.5%
1974	62.4	15.64	14.5%			1999	61.1	7.07	-48.2%	374,487	96.0%
1975	60.8	7.80	-42.9%			2000	62.6	11.75	-14.0%	404,244	103.7%
1976	63.9	8.72	-36.2%			2001	61.3	20.49	50.0%	393,101	100.8%
1977	63.4	17.90	31.0%			2002	61.6	5.39	-60.5%	414,244	106.2%
1978	63.3	28.21	106.5%			2003	62.9	14.29	4.6%	418,428	107.3%
1979	63.2	18.66	36.6%			2004	62.7	18.48	35.3%	427,154	109.5%
1980	63.8	22.52	64.9%			2005	62.4	21.65	58.5%	404,354	103.7%
1981	64.8	9.83	-28.0%			2006	61.9	9.83	-28.0%	404,500	103.7%
1982	62.1	12.97	-5.0%			2007	60.2	5.74	-58.0%	429,545	110.2%
1983	64.3	32.48	137.8%			2008	63.1	14.24	4.2%	405,628	104.0%
1984	65.0	8.62	-36.9%			2009	62.3	6.72	-50.8%	387,758	99.4%
1985	63.1	10.22	-25.2%			2010	61.4	23.24	70.1%	402,830	103.3%
1986	63.8	17.17	25.7%								
1987	62.9	12.14	-11.1%								
1988	63.8	11.00	-19.5%								
1989	63.4	3.95	-71.1%								
1990	63.7	5.81	-57.5%								
1991	62.1	15.17	11.1%								
1992	64.6	21.11	54.5%	353,894	90.8%						
1993	63.5	22.33	63.5%	352,863	90.5%						
1994	62.4	9.34	-31.6%	379,269	97.3%						

Source: Western Regional Climate Center:

<http://www.wrcc.dri.edu/cgi-bin/cliMAIN.pl?ca8973>

Calendar Year	Average Water Year	Normal Water Year	Single-Dry Water Year	Multiple-Dry Water Years			
				1	2	3	4
	-	2003	2002	2006	2007	2008	2009
Demand per Service (gal/yr)	389,930	418,428	414,244	404,500	429,545	405,628	387,758
Difference from Average	100.0%	107.3%	106.2%	103.7%	110.2%	104.0%	99.4%

California Water Service Company - Dominguez
Water Supply and Demand Analysis and Projections

Worksheet 20

Temperature Data

Station:(048973) TORRANCE															
From Year=1932 To Year=2010															
	Monthly Averages			Daily Extremes				Monthly Extremes				Max. Temp.		Min. Temp.	
	Max.	Min.	Mean	High	Date	Low	Date	Highest Mean	Year	Lowest Mean	Year	>= 90 F	<= 32 F	<= 32 F	<= 0 F
	F	F	F	F	dd/yyyy or yyyymmdd	F	dd/yyyy or yyyymmdd	F	-	F	-	# Days	# Days	# Days	# Days
January	65.8	44.2	55	91	31/2003	24	23/1937	61.9	2003	45.2	1932	0	0	0.9	0
February	66.5	45.8	56.2	92	23/1954	28	3/1932	61.3	1954	49.4	1956	0	0	0.2	0
March	67.4	47.3	57.4	96	26/1988	23	2/1935	63.1	1988	52.4	1939	0.1	0	0.1	0
April	69.6	49.8	59.7	104	6/1989	30	1/1936	65.8	1992	53.3	1967	0.5	0	0	0
May	71.6	53.4	62.5	100	13/1979	37	5/1933	67.9	1997	57.1	1933	0.4	0	0	0
June	73.8	56.7	65.3	104	16/1981	21	12/2007	72.2	1981	58.8	2007	0.4	0	0	0
July	77.6	60.2	68.9	102	1/1985	43	23/1965	73.8	2006	64.8	1944	0.5	0	0	0
August	78.6	61	69.8	101	6/1983	44	9/2007	75.2	1983	66	1942	0.9	0	0	0
September	78	59.5	68.8	111	1/1955	41	28/1934	77.4	1984	61.7	1933	1.8	0	0	0
October	75.4	55.4	65.4	106	15/1961	33	4/1945	70.5	1958	61.8	1938	1.7	0	0	0
November	71.5	48.9	60.2	98	4/1949	29	13/1938	65.8	1976	55.3	1994	0.6	0	0.1	0
December	67	45	56	94	3/1958	27	22/1990	60.1	1980	51.1	1932	0	0	0.4	0
Annual	71.9	52.3	62.1	111	19550901	21	20070612	65	1984	58.7	1933	6.9	0	1.6	0

Monthly Average ETo Report	Jan	Feb	Mar	Apr	May	Jun	Jul	Aug	Sep	Oct	Nov	Dec	Total
	1.86	2.24	3.41	4.50	5.27	5.70	5.89	5.58	4.50	3.41	2.40	1.86	46.6

1) California Irrigation Management Information System (CIMIS), <http://www.cimis.water.ca.gov/cimis/welcome.jsp>, EvapoTranspiration (Eto) Zones Map, Zone 4

California Water Service Company - Dominguez
Water Supply and Demand Analysis and Projections

Worksheet 20

Precipitaion Data

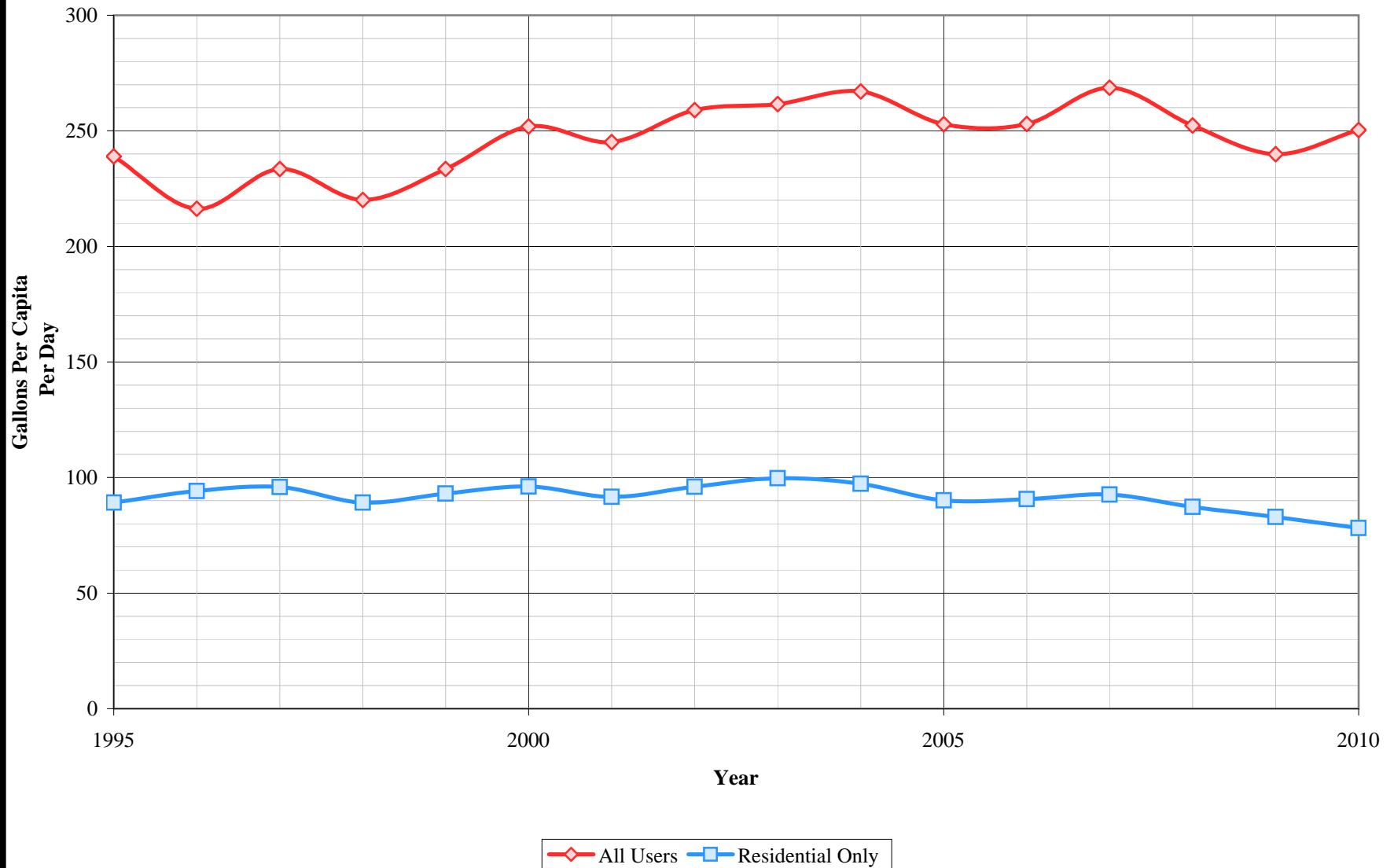
Station:(048973) TORRANCE														
From Year=1932 To Year=2010														
	Precipitation										Total Snowfall			
	Mean	High	Year	Low	Year	1 Day Max.		>= 0.01 in.	>= 0.10 in.	>= 0.50 in.	>= 1.00 in.	Mean	High	Year
	in.	in.	-	in.	-	in.	dd/yyyy or yyyymmdd	# Days	# Days	# Days	# Days	in.	in.	-
January	3.09	16.92	1995	0	1972	6.53	26/1956	6	5	2	1	0	1.2	1949
February	3.25	13.08	1998	0	1961	4.11	6/2010	6	4	2	1	0	0	1949
March	2.04	8.9	1983	0	1934	3.04	1/1983	5	3	1	1	0	0	1949
April	0.83	5.06	1965	0	1934	1.62	8/1935	3	2	1	0	0	0	1949
May	0.18	3.48	1977	0	1934	2.18	8/1977	1	0	0	0	0	0	1949
June	0.06	0.76	1999	0	1935	0.73	5/1933	0	0	0	0	0	0	1949
July	0.02	0.57	1997	0	1932	0.57	22/1997	0	0	0	0	0	0	1949
August	0.06	3.08	1977	0	1932	2.8	17/1977	0	0	0	0	0	0	1949
September	0.22	6.43	1939	0	1933	5.51	25/1939	1	0	0	0	0	0	1949
October	0.42	3.65	2004	0	1937	1.94	27/2000	2	1	0	0	0	0	1949
November	1.31	9.34	1965	0	1932	4.6	29/1970	3	2	1	0	0	0	1949
December	2.18	7.24	1971	0	1956	3.61	28/2004	6	4	1	1	0	0	1949
Annual	13.66	32.48	1983	3.41	1953	6.53	19560126	34	22	9	4	0	1.2	1949

California Water Service Company - Dominguez District
Groundwater Production Facilities

	<u>UNIT NO.</u>	DESIGN CAPACITY			
		<u>(GPM)</u>	<u>(GPM)</u>		
COMPANY OWNED WELLS	215-01	950			
	215-02			Abandoned	
	219-01			Abandoned	
	275-01	997			
	279-01	1,800			
	294-01		1,250	Standby	
	298-01	2,800			
	SUBTOTAL		6,547	1,250	gpm
WELLS ON LEASED PROPERTY	272-01	860			
	277-01	1,180			
	290-01	980			
	297-01	750			
	SUBTOTAL		3,770	0	gpm
Total Units		8	1	units	
Design Capacity			10,317	1,250	gpm
			14.9	1.8	MGD
			16,641.4	2,016.3	AFY

Notes:
 1) Listed pump capacities on this worksheet represent design flowrates, actual flowrates are highly dependent on local system pressures, well characteristics, and other design criteria
 2) Values in bold are estimated
 Updated 1/1/2011

Dominguez District Per Capita Consumption



California Water Service Company - Dominguez District
Water Supply and Demand Analysis and Projections

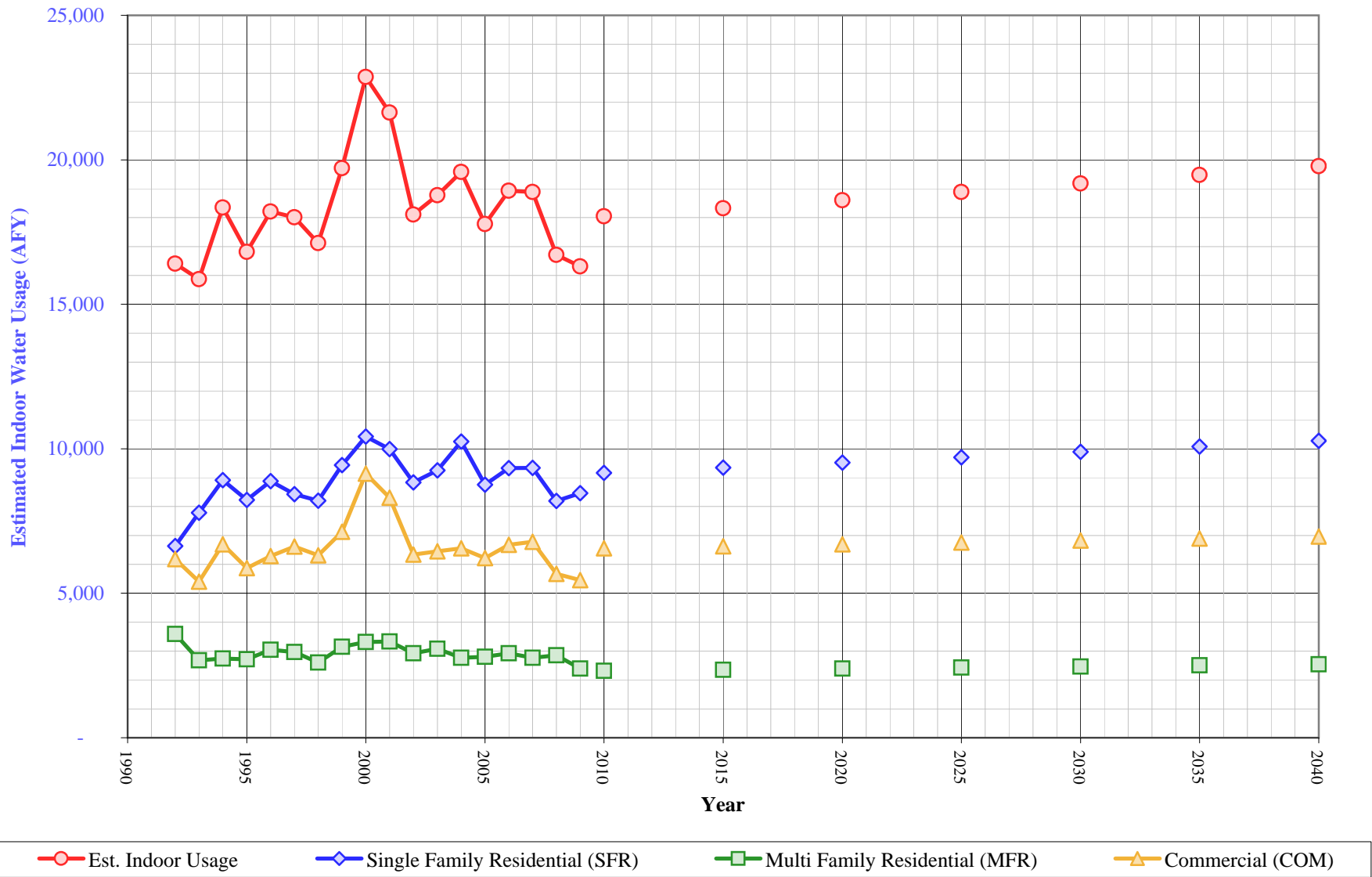
Per Capita Water Demand Calculation

Year	All Users			Residential Only		
	Usage (AFY)	Usage (MGY)	Gallons Per Capita Per Day	Usage (AFY)	Usage (MGY)	Gallons Per Capita Per Day
1995	36,497	11,893	239	13,614	4,436	89
1996	33,127	10,795	216	14,420	4,699	94
1997	36,014	11,735	233	14,792	4,820	96
1998	34,069	11,101	220	13,805	4,498	89
1999	36,283	11,823	233	14,472	4,716	93
2000	39,380	12,832	252	15,030	4,898	96
2001	38,502	12,546	245	14,405	4,694	92
2002	40,742	13,276	259	15,105	4,922	96
2003	41,161	13,412	262	15,696	5,114	100
2004	42,356	13,802	267	15,438	5,030	97
2005	40,337	13,144	253	14,370	4,683	90
2006	40,458	13,183	253	14,503	4,726	91
2007	42,975	14,004	269	14,817	4,828	93
2008	40,514	13,202	252	14,016	4,567	87
2009	38,745	12,625	240	13,393	4,364	83
2010	40,337	13,144	250	12,598	4,105	78
5 Yr. Avg.	40,606	13,232	253	13,865	4,518	86
10 Yr. Avg.	40,613	13,234	255	14,434	4,703	91

Five year average is from years 2006 through 2010

Ten year average is from years 2001 through 2010

Dominguez District Estimated Indoor Water Usage



California Water Service Company - Dominguez District
Water Supply and Demand Analysis and Projections

Estimated Indoor/Outdoor Water Usage

Year	Single Family Residential (SFR)							Multi Family Residential (MFR)				Commercial (COM)				Est. Indoor Usage AFY
	Metered Single Family Residential Indoor Use (Annualized 90% of January Total)			Indoor Flat Rate Usage (AFY)	Total SFR Indoor Usage			Multi Family Residential January Usage (CCF)	Multi Family Residential Indoor Use (Annualized 90% of January)			Commercial (CCF)	Commercial Indoor Use (Annualized 90% of January Total)			
	JAN (CCF)	AFY	AFY/Service		AFY	GPD/Service	%		AFY	GPD/Service	%		AFY	GPD/Service	%	
1980																
1981																
1982																
1983																
1984																
1985																
1986																
1987																
1988																
1989																
1990																
1991																
1992	267,626	6,635	0.25	0	6,635	220	67%	144,729	3,588	3,725	113%	249,428	6,184	1,972	78%	16,408
1993	314,071	7,787	0.29	0	7,787	258	76%	107,916	2,676	2,752	88%	217,983	5,405	1,717	68%	15,867
1994	359,621	8,916	0.33	0	8,916	295	84%	110,613	2,742	2,830	88%	269,931	6,693	2,128	83%	18,351
1995	331,853	8,228	0.30	0	8,228	272	78%	109,409	2,713	2,803	87%	236,931	5,874	1,876	71%	16,815
1996	358,153	8,880	0.33	0	8,880	292	79%	122,711	3,042	3,144	94%	253,694	6,290	2,008	72%	18,212
1997	340,025	8,430	0.31	0	8,430	276	73%	119,540	2,964	3,024	90%	266,761	6,614	2,111	69%	18,008
1998	330,848	8,203	0.30	0	8,203	268	77%	104,895	2,601	2,615	82%	254,742	6,316	2,018	73%	17,119
1999	380,635	9,437	0.34	0	9,437	307	84%	127,002	3,149	3,113	96%	287,422	7,126	2,265	77%	19,712
2000	420,345	10,422	0.38	0	10,422	338	90%	133,574	3,312	3,217	94%	368,508	9,137	2,897	89%	22,870
2001	403,079	9,994	0.36	0	9,994	322	90%	134,263	3,329	3,175	101%	335,206	8,311	2,580	86%	21,633
2002	356,522	8,839	0.32	0	8,839	285	76%	117,862	2,922	2,769	86%	255,795	6,342	1,928	62%	18,104
2003	373,198	9,253	0.33	0	9,253	298	75%	123,990	3,074	2,951	91%	260,076	6,448	1,957	72%	18,775
2004	413,541	10,253	0.37	0	10,253	327	85%	111,728	2,770	2,671	81%	264,295	6,553	1,979	75%	19,576
2005	353,229	8,758	0.31	0	8,758	278	78%	113,069	2,803	2,720	88%	250,710	6,216	1,863	76%	17,777
2006	376,368	9,331	0.33	0	9,331	295	82%	117,984	2,925	2,863	93%	269,144	6,673	1,988	79%	18,930
2007	376,735	9,341	0.33	0	9,341	295	80%	111,674	2,769	2,716	89%	273,510	6,781	2,019	79%	18,891
2008	330,501	8,194	0.29	0	8,194	258	74%	114,987	2,851	3,173	98%	228,563	5,667	1,723	69%	16,712
2009	341,356	8,463	0.30	0	8,463	265	80%	96,533	2,393	3,070	86%	219,850	5,451	1,700	73%	16,308
2010	327,704	8,125	0.28	0	9,168	286	81%	92,600	2,317	2,963	91%	212,319	6,557	2,040	76%	18,042
2015	---	---	---	---	9,344	286	81%	---	2,353	2,963	91%	---	6,624	2,040	76%	18,320
2020	---	---	---	---	9,523	286	81%	---	2,389	2,963	91%	---	6,691	2,040	76%	18,603
2025	---	---	---	---	9,705	286	81%	---	2,426	2,963	91%	---	6,759	2,040	76%	18,890
2030	---	---	---	---	9,891	286	81%	---	2,464	2,963	91%	---	6,827	2,040	76%	19,182
2035	---	---	---	---	10,080	286	81%	---	2,502	2,963	91%	---	6,896	2,040	76%	19,479
2040	---	---	---	---	10,273	286	81%	---	2,541	2,963	91%	---	6,966	2,040	76%	19,780

California Water Service Company - Dominguez District

Water Supply and Demand Analysis and Projections

Comparison of Projected Demand and Conservation Savings Between SBx7-7 Compliance Targets and Actual Proposed Programs

Year	SBx7-7 Compliance Target (gpcd)	Anticipated GPCD with Proposed Programs*	Anticipated GPCD Without Indirect Recycled Water Use Credit	Estimated Population	SBx7-7 Compliance Target Undadjusted Baseline Demand (AFY)	Undadjusted Baseline Demand Without Credit (AFY)	SBx7-7 Compliance Target Demand (AFY)	Anticipated SBx7-7 Target Demand with Proposed Programs (AFY)	Actual Anticipated Demand Net of Recycled Water Use (AFY)	Compliance Target Savings Requirement (AFY)	Savings Due to Proposed Programs (AFY)	Recycled Water Projection (AFY)
2005-2009 Average	203	203	225	143,110	32,542	36,004	32,542	32,542	36,004	0	0	-
2010	203	203	225	143,830	32,705	36,185	32,705	32,705	36,185	0	0	3,724
2011	201	201	223	144,370	32,828	36,321	32,505	32,505	35,998	323	323	3,804
2012	199	199	221	144,910	32,951	36,457	32,302	32,302	35,808	649	649	3,884
2013	197	197	219	145,460	33,076	36,595	32,098	32,098	35,618	978	978	3,965
2014	195	195	217	146,000	33,199	36,731	31,890	31,890	35,423	1,308	1,308	4,048
2015	193	194	215	146,550	33,324	36,870	31,682	31,846	35,228	1,642	1,477	4,134
2016	189	189	210	147,100	33,449	37,008	31,076	31,076	34,635	2,373	2,241	4,220
2017	184	185	206	147,660	33,576	37,149	30,467	30,566	34,039	3,110	3,010	4,309
2018	180	180	201	148,210	33,701	37,287	29,850	29,916	33,436	3,852	3,785	4,399
2019	175	176	197	148,770	33,829	37,428	29,229	29,263	32,829	4,599	4,566	4,492
2020	171	171	193	149,330	33,956	37,569	28,603	28,603	32,216	5,353	5,353	4,586
2021	171	171	193	149,890	34,083	37,710	28,711	28,711	32,337	5,373	5,373	4,682
2022	171	171	193	150,450	34,211	37,851	28,818	28,818	32,458	5,393	5,393	4,781
2023	171	171	193	151,020	34,340	37,994	28,927	28,927	32,581	5,413	5,413	4,881
2024	171	171	193	151,590	34,470	38,138	29,036	29,036	32,704	5,434	5,434	4,984
2025	171	171	193	152,160	34,600	38,281	29,145	29,145	32,827	5,454	5,454	5,088
2026	171	171	193	152,730	34,729	38,424	29,255	29,255	32,950	5,475	5,475	5,195
2027	171	171	193	153,300	34,859	38,568	29,364	29,364	33,073	5,495	5,495	5,304
2028	171	171	193	153,880	34,991	38,714	29,475	29,475	33,198	5,516	5,516	5,416
2029	171	171	193	154,460	35,123	38,860	29,586	29,586	33,323	5,537	5,537	5,529
2030	171	171	193	155,040	35,254	39,006	29,697	29,697	33,448	5,557	5,557	5,646
2031	171	171	193	155,620	35,386	39,151	29,808	29,808	33,573	5,578	5,578	5,764
2032	171	171	193	156,210	35,520	39,300	29,921	29,921	33,701	5,599	5,599	5,885
2033	171	171	193	156,790	35,652	39,446	30,032	30,032	33,826	5,620	5,620	6,009
2034	171	171	193	157,380	35,787	39,594	30,145	30,145	33,953	5,641	5,641	6,135
2035	171	171	193	157,970	35,921	39,743	30,258	30,258	34,080	5,662	5,662	6,264
2036	171	171	193	158,570	36,057	39,894	30,373	30,373	34,210	5,684	5,684	6,395
2037	171	171	193	159,160	36,191	40,042	30,486	30,486	34,337	5,705	5,705	6,530
2038	171	171	193	159,760	36,328	40,193	30,601	30,601	34,466	5,727	5,727	6,667
2039	171	171	193	160,360	36,464	40,344	30,716	30,716	34,596	5,748	5,748	6,807
2040	171	171	193	160,970	36,603	40,497	30,833	30,833	34,728	5,770	5,770	6,950

*Note: The district is not projected to achieve its district-specific 2015 SBx7-7 compliance target through the proposed 2011-2015 conservation program portfolio. The district will achieve compliance with its 2015 SBx7-7 compliance target through a regional alliance. For the purpose of this analysis it is assumed that there will be a linear reduction in GPCD from 2015-2020 to achieve the district-specific 2020 SBx7-7 compliance target. The district may ultimately elect to achieve 2020 SBx7-7 compliance through a regional alliance. GPCD will remain flat from 2020 through 2040.