

Water Resources Planning Department

Water Supply / Demand Analysis and Projections
for
Hermosa Redondo District

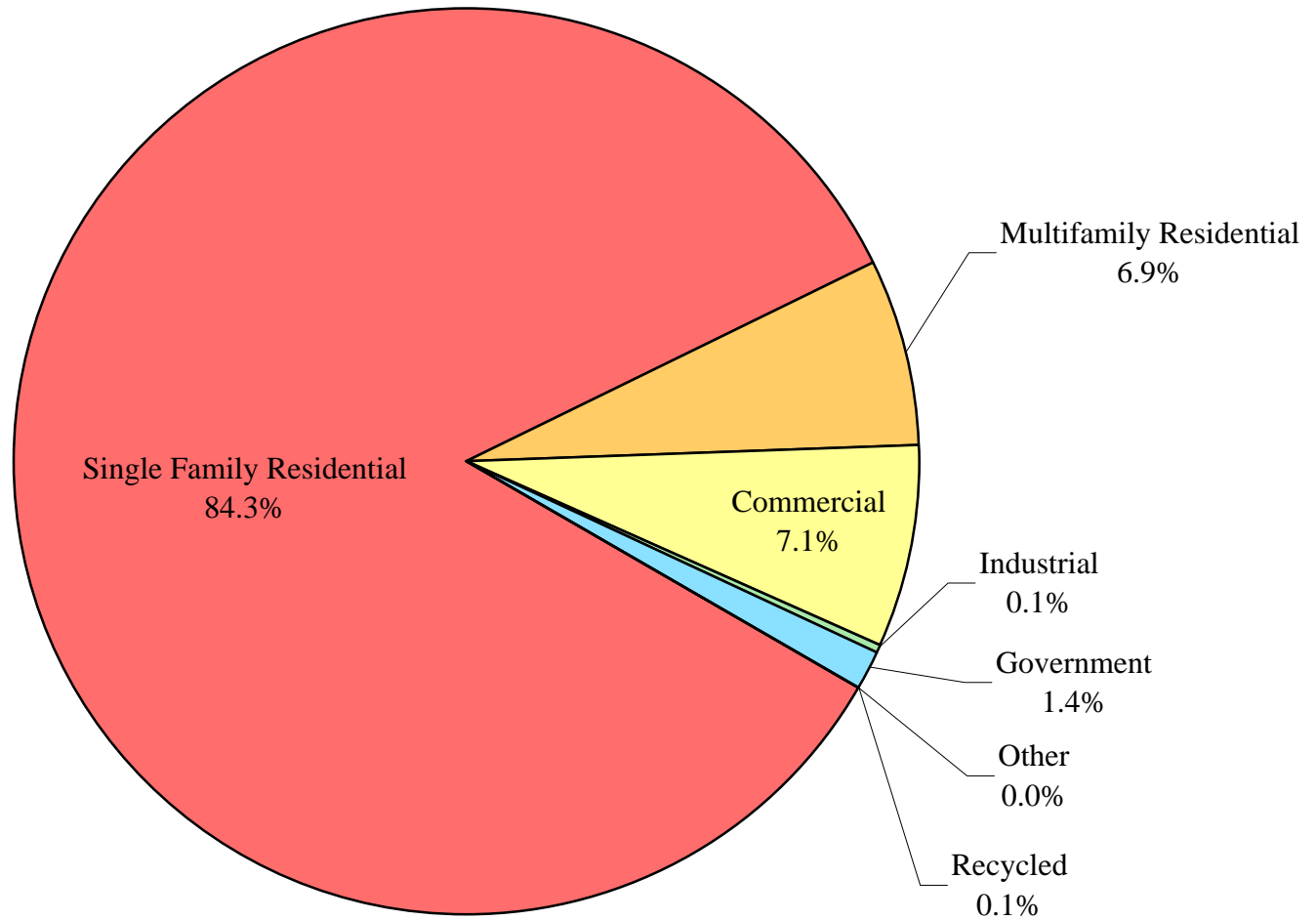
2010



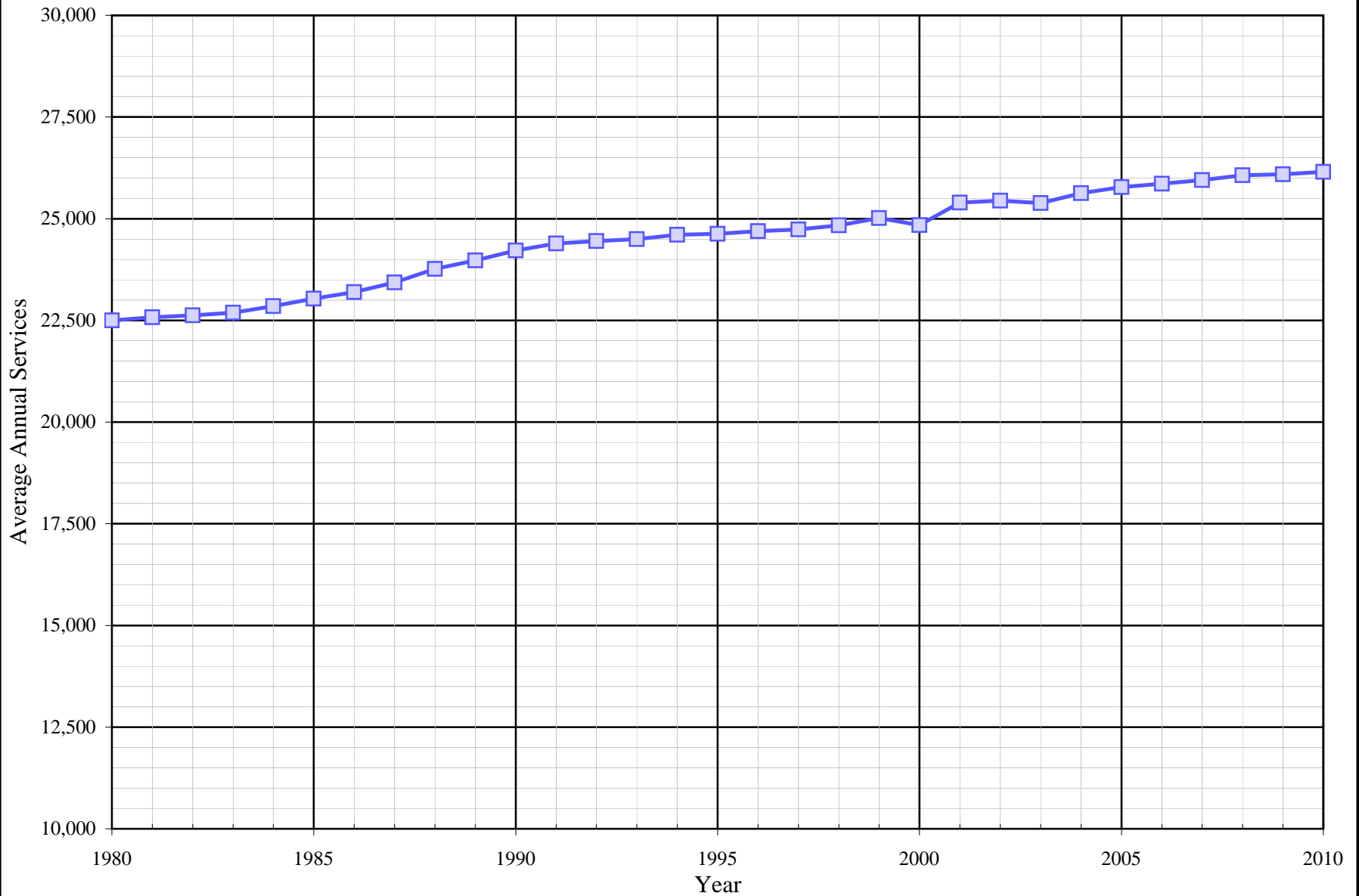
Table of Contents for Worksheets

Worksheet	Title
1	Annual Services
2	Service Growth Percentage
3	District Sales (ccf)
4	District Sales (AF)
5	Demand per Service (Gallons/Service/Year)
6	Demand per Service (Gallons per Day)
7	Percentage Change in Annual Demand
8	Percentage of Total Sales
9	Percentage of Total Demand
10	Demand Scenario 1 (Low Demand Projection)
11	Demand Scenario 2 (Average Demand Projection)
12	Demand Scenario 3 (High Demand Projection)
13	Demand Scenario 4 (Alternate Service Projection)
14	Not Used
15	Actual & Projected Annual Average Services
16	Actual & Projected Demand in Acre-Feet
17	Projected Annual Supply by Source
18	Historical and Projected Average Day, Maximum Day, and Peak Demands
19	Population as of the 2000 Average Annual Services
20	Temperature & Rainfall History
21	Groundwater Facilities (if available)
22	Per Capita Water Demand Calculation
23	Indoor/Outdoor Water Usage
24	SB-7 Compliance Demand Worksheet

Hermosa-Redondo District Distribution of Services (2010)



Hermosa-Redondo District Historical Services



California Water Service Company - Hermosa Redondo District
Water Supply and Demand Analysis and Projections
Annual Services

Year	Residential	Multi-Residential	Multi-Res. units	Commercial	Industrial	Government	Recycled	Other	Total	Annual Change
1980	18,721	1,185	13,839	2,196	45	342	0	8	22,497	130
1981	18,739	1,235	14,173	2,201	46	348	0	5	22,574	77
1982	18,746	1,264	14,339	2,215	45	348	0	3	22,621	47
1983	18,781	1,275	14,408	2,229	46	351	0	5	22,687	66
1984	18,919	1,293	14,508	2,235	45	354	0	6	22,852	165
1985	19,063	1,318	14,674	2,240	44	357	0	10	23,032	180
1986	19,201	1,348	14,885	2,240	43	355	0	10	23,197	165
1987	19,379	1,391	15,069	2,260	43	353	0	5	23,431	234
1988	19,678	1,421	15,189	2,265	43	356	0	0	23,763	332
1989	19,862	1,441	15,263	2,264	42	362	0	0	23,971	208
1990	20,100	1,455	15,362	2,255	44	365	0	0	24,219	248
1991	20,266	1,459	15,514	2,244	44	369	0	7	24,389	170
1992	20,341	1,460	15,382	2,231	42	369	0	8	24,451	62
1993	20,395	1,461	15,431	2,223	41	368	0	8	24,496	45
1994	20,509	1,460	15,456	2,223	40	361	0	12	24,605	109
1995	20,540	1,459	15,458	2,209	38	367	1	16	24,630	25
1996	20,601	1,458	15,516	2,220	38	362	5	8	24,692	62
1997	20,666	1,458	15,503	2,206	35	355	8	9	24,737	45
1998	20,780	1,457	15,487	2,194	34	345	16	8	24,834	97
1999	20,976	1,457	15,471	2,184	34	329	19	13	25,012	178
2000	20,867	1,439	14,893	2,153	34	319	19	14	24,845	-167
2001	21,292	1,469	15,842	2,220	39	345	20	11	25,396	551
2002	21,341	1,469	17,035	2,216	39	344	20	12	25,441	45
2003	21,298	1,468	17,070	2,208	38	345	20	9	25,386	-55
2004	21,551	1,464	17,062	2,195	39	348	19	10	25,626	240
2005	21,699	1,464	17,548	2,191	40	349	19	12	25,774	148
2006	21,795	1,461	17,770	2,188	40	349	18	9	25,860	86
2007	21,917	1,455	15,817	2,186	40	322	18	9	25,947	87
2008	21,980	1,644	15,607	2,019	33	360	18	11	26,065	118
2009	21,997	1,801	15,531	1,868	26	367	20	10	26,089	24
2010	22,057	1,804		1,869	25	366	20	9	26,150	61
5 Yr Avg.	21,878	1,565	16,455	2,090	36	349	19	10	25,947	93
10 Yr Avg.	21,574	1,513	16,417	2,144	37	345	19	11	25,643	108
20 Yr Avg.	21,046	1,486	15,938	2,182	38	352	12	10	25,125	106

Five year average = 2005 through 2009.

Ten year average = 2000 through 2009.

Twenty year average = 1990 through 2009.

California Water Service Company - Hermosa Redondo District
Water Supply and Demand Analysis and Projections
Service Growth Percentage

Worksheet 2

Year	Residential	Multi-Residential	Multi-Res. units	Commercial	Industrial	Government	Recycled	Other	Total
1981	0.10%	4.22%	2.41%	0.23%	2.22%	1.75%	0.00%	-37.50%	0.34%
1982	0.04%	2.35%	1.17%	0.64%	-2.17%	0.00%	0.00%	-40.00%	0.21%
1983	0.19%	0.87%	0.48%	0.63%	2.22%	0.86%	0.00%	66.67%	0.29%
1984	0.73%	1.41%	0.69%	0.27%	-2.17%	0.85%	0.00%	20.00%	0.73%
1985	0.76%	1.93%	1.14%	0.22%	-2.22%	0.85%	0.00%	66.67%	0.79%
1986	0.72%	2.28%	1.44%	0.00%	-2.27%	-0.56%	0.00%	0.00%	0.72%
1987	0.93%	3.19%	1.24%	0.89%	0.00%	-0.56%	0.00%	-50.00%	1.01%
1988	1.54%	2.16%	0.80%	0.22%	0.00%	0.85%	0.00%	-100.00%	1.42%
1989	0.94%	1.41%	0.49%	-0.04%	-2.33%	1.69%	0.00%	0.00%	0.88%
1990	1.20%	0.97%	0.65%	-0.40%	4.76%	0.83%	0.00%	0.00%	1.03%
1991	0.83%	0.27%	0.99%	-0.49%	0.00%	1.10%	0.00%	700.00%	0.70%
1992	0.37%	0.07%	-0.85%	-0.58%	-4.55%	0.00%	0.00%	14.29%	0.25%
1993	0.27%	0.07%	0.32%	-0.36%	-2.38%	-0.27%	0.00%	0.00%	0.18%
1994	0.56%	-0.07%	0.16%	0.00%	-2.44%	-1.90%	0.00%	50.00%	0.44%
1995	0.15%	-0.07%	0.01%	-0.63%	-5.00%	1.66%	100.00%	33.33%	0.10%
1996	0.30%	-0.07%	0.38%	0.50%	0.00%	-1.36%	400.00%	-50.00%	0.25%
1997	0.32%	0.00%	-0.08%	-0.63%	-7.89%	-1.93%	60.00%	12.50%	0.18%
1998	0.55%	-0.07%	-0.10%	-0.54%	-2.86%	-2.82%	100.00%	-11.11%	0.39%
1999	0.94%	0.00%	-0.10%	-0.46%	0.00%	-4.64%	18.75%	62.50%	0.72%
2000	-0.52%	-1.24%	-3.74%	-1.42%	0.00%	-3.04%	0.00%	7.69%	-0.67%
2001	2.04%	2.08%	6.37%	3.11%	14.71%	8.15%	5.26%	-21.43%	2.22%
2002	0.23%	0.00%	7.53%	-0.18%	0.00%	-0.29%	0.00%	9.09%	0.18%
2003	-0.20%	-0.07%	0.21%	-0.36%	-2.56%	0.29%	0.00%	-25.00%	-0.22%
2004	1.19%	-0.27%	-0.05%	-0.59%	2.63%	0.87%	-5.00%	11.11%	0.95%
2005	0.69%	0.00%	2.85%	-0.18%	2.56%	0.29%	0.00%	20.00%	0.58%
2006	0.44%	-0.20%	1.27%	-0.14%	0.00%	0.00%	-5.26%	-25.00%	0.33%
2007	0.56%	-0.41%	-10.99%	-0.09%	0.00%	-7.74%	0.00%	0.00%	0.34%
2008	0.29%	12.99%	-1.33%	-7.64%	-17.50%	11.80%	0.00%	22.22%	0.45%
2009	0.08%	9.55%	-0.49%	-7.48%	-21.21%	1.94%	11.11%	-9.09%	0.09%
2010	0.31%	0.28%	-100.00%	0.75%	-3.85%	-0.27%	0.00%	10.00%	0.33%
5 Yr. Avg.	0.41%	4.39%	-1.74%	-3.11%	-7.23%	1.26%	1.17%	1.63%	0.36%
10 Yr. Avg.	0.48%	2.24%	0.16%	-1.50%	-2.14%	1.23%	0.61%	-1.04%	0.43%

Five year average = 2005 through 2009.

Ten year average = 2000 through 2009.

California Water Service Company - Hermosa Redondo District
Water Supply and Demand Analysis and Projections
Sales(ccf)

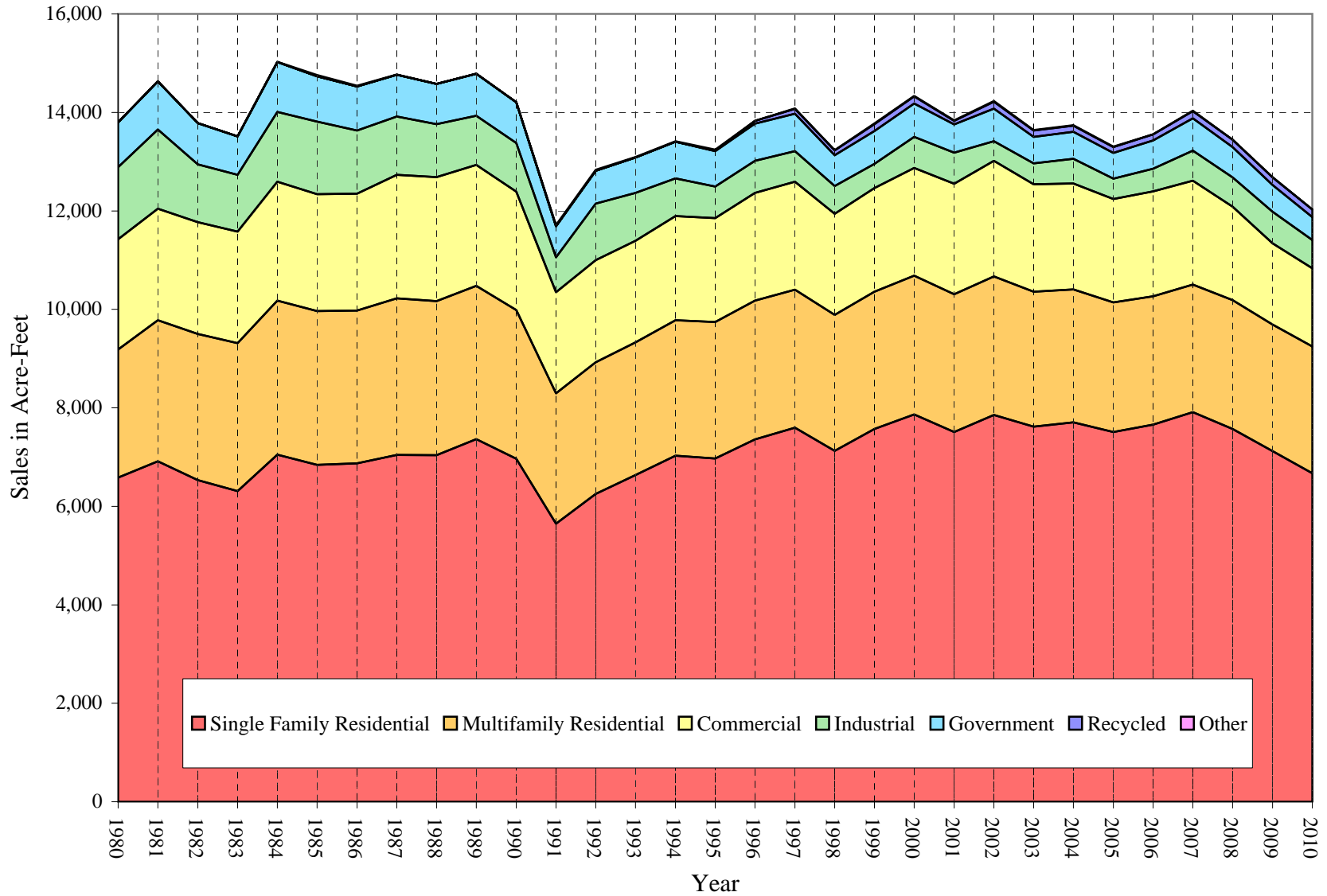
Worksheet 3

Year	Multi-								Unaccounted Water	Total(ccf) Sales	Total(ccf) Demand	Total(kgal) Demand
	Residential	Residential	Commercial	Industrial	Government	Recycled	Other					
1980	2,866,988	1,134,302	974,490	637,029	397,202	0	2,268	468,393	6,012,279	6,480,672	4,847,880	
1981	3,010,827	1,248,152	987,247	699,575	426,377	0	3,013	415,837	6,375,191	6,791,028	5,080,042	
1982	2,845,180	1,291,780	991,099	509,245	364,836	0	1,780	522,118	6,003,920	6,526,038	4,881,816	
1983	2,748,655	1,308,747	985,638	503,223	338,826	0	1,276	660,215	5,886,365	6,546,580	4,897,182	
1984	3,070,725	1,362,979	1,051,704	617,808	440,108	0	2,858	544,723	6,546,182	7,090,905	5,304,366	
1985	2,980,969	1,360,636	1,033,462	640,643	402,220	0	10,931	528,324	6,428,861	6,957,185	5,204,336	
1986	2,993,503	1,350,902	1,034,812	558,367	389,560	0	6,217	523,645	6,333,361	6,857,006	5,129,397	
1987	3,068,300	1,384,863	1,093,384	515,529	370,129	0	972	429,220	6,433,177	6,862,397	5,133,430	
1988	3,065,925	1,362,292	1,096,714	469,044	355,456	0	0	489,594	6,349,431	6,839,025	5,115,946	
1989	3,208,333	1,355,259	1,069,637	434,984	372,138	0	0	506,893	6,440,351	6,947,244	5,196,900	
1990	3,034,865	1,314,361	1,048,903	429,466	359,564	0	0	497,289	6,187,159	6,684,448	5,000,315	
1991	2,460,514	1,153,453	893,085	309,683	273,901	0	10,522	362,230	5,101,158	5,463,388	4,086,898	
1992	2,722,506	1,165,004	902,786	499,996	291,395	0	8,840	197,224	5,590,527	5,787,751	4,329,539	
1993	2,890,950	1,171,678	899,336	424,477	311,749	0	5,355	286,627	5,703,545	5,990,172	4,480,960	
1994	3,062,107	1,197,818	920,722	332,773	325,219	0	5,652	442,561	5,844,291	6,286,852	4,702,892	
1995	3,036,026	1,207,323	918,969	278,997	313,816	4,150	10,769	416,218	5,770,050	6,186,268	4,627,650	
1996	3,205,433	1,227,750	952,325	285,235	328,986	22,717	1,126	411,006	6,023,572	6,434,578	4,813,399	
1997	3,310,125	1,220,248	954,398	271,674	330,945	41,558	5,906	470,615	6,134,854	6,605,469	4,941,234	
1998	3,104,613	1,201,337	895,477	246,339	271,251	42,693	2,806	504,162	5,764,516	6,268,678	4,689,297	
1999	3,298,142	1,213,950	917,038	214,173	290,783	60,858	6,232	557,103	6,001,176	6,558,279	4,905,934	
2000	3,425,506	1,227,996	953,065	275,103	294,568	64,141	3,994	469,601	6,244,373	6,713,974	5,022,402	
2001	3,269,817	1,220,295	977,102	274,190	251,615	30,176	4,821	517,133	6,028,016	6,545,149	4,896,112	
2002	3,421,590	1,225,583	1,022,836	173,885	287,490	61,602	5,459	455,296	6,198,445	6,653,741	4,977,344	
2003	3,318,052	1,194,804	950,685	183,207	234,659	55,432	5,440	495,545	5,942,279	6,437,824	4,815,827	
2004	3,356,368	1,175,638	936,903	218,555	239,011	54,429	4,735	444,979	5,985,639	6,430,618	4,810,437	
2005	3,270,466	1,146,710	915,658	180,083	227,404	51,400	4,687	547,225	5,796,408	6,343,633	4,745,367	
2006	3,335,313	1,135,220	929,648	199,884	250,194	52,954	1,758	355,727	5,904,971	6,260,698	4,683,328	
2007	3,446,676	1,128,212	919,303	266,262	285,740	63,103	3,553	236,619	6,112,849	6,349,468	4,749,732	
2008	3,298,204	1,139,962	826,288	258,606	267,885	64,839	1,656	225,416	5,857,440	6,082,856	4,550,293	
2009	3,101,796	1,119,084	718,746	280,365	236,573	66,685	2,875	205,415	5,526,124	5,731,539	4,287,489	
2010	2,906,160	1,122,021	690,227	249,921	204,233	66,685	3,114	209,605	5,242,361	5,451,966	4,078,354	
5 Yr. Avg.	3,290,491	1,133,838	861,929	237,040	253,559	59,796	2,906	314,080	5,839,558	6,153,639	4,603,242	
10 Yr. Avg.	3,324,379	1,171,350	915,023	231,014	257,514	56,476	3,898	395,296	5,959,654	6,354,950	4,753,833	

Five year average = 2005 through 2009.

Ten year average = 2000 through 2009.

Hermosa-Redondo District Historical Sales



California Water Service Company - Hermosa Redondo District
Water Supply and Demand Analysis and Projections
Sales(AF)

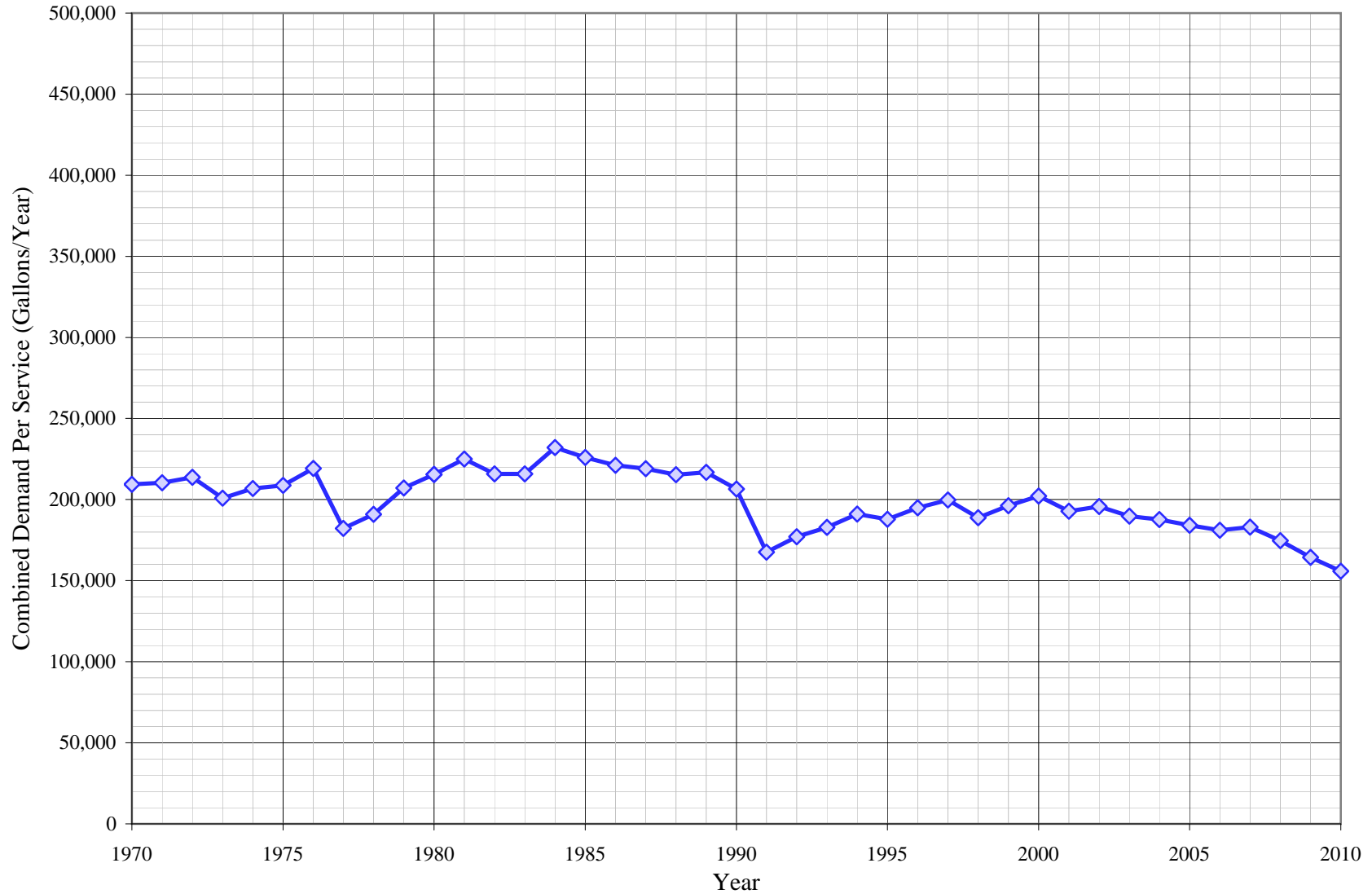
Worksheet 4

Year	Multi-								Unaccounted Water	Total(AF) Sales	Total(AF) Demand	Total(Mgal) Demand
	Residential	Residential	Commercial	Industrial	Government	Recycled	Other					
1980	6,582	2,604	2,237	1,462	912	0	5	1,075	13,802	14,878	4,848	
1981	6,912	2,865	2,266	1,606	979	0	7	955	14,635	15,590	5,080	
1982	6,532	2,966	2,275	1,169	838	0	4	1,199	13,783	14,982	4,882	
1983	6,310	3,004	2,263	1,155	778	0	3	1,516	13,513	15,029	4,897	
1984	7,049	3,129	2,414	1,418	1,010	0	7	1,251	15,028	16,278	5,304	
1985	6,843	3,124	2,373	1,471	923	0	25	1,213	14,759	15,971	5,204	
1986	6,872	3,101	2,376	1,282	894	0	14	1,202	14,539	15,742	5,129	
1987	7,044	3,179	2,510	1,183	850	0	2	985	14,769	15,754	5,133	
1988	7,038	3,127	2,518	1,077	816	0	0	1,124	14,576	15,700	5,116	
1989	7,365	3,111	2,456	999	854	0	0	1,164	14,785	15,949	5,197	
1990	6,967	3,017	2,408	986	825	0	0	1,142	14,204	15,345	5,000	
1991	5,649	2,648	2,050	711	629	0	24	832	11,711	12,542	4,087	
1992	6,250	2,674	2,073	1,148	669	0	20	453	12,834	13,287	4,330	
1993	6,637	2,690	2,065	974	716	0	12	658	13,094	13,752	4,481	
1994	7,030	2,750	2,114	764	747	0	13	1,016	13,417	14,433	4,703	
1995	6,970	2,772	2,110	640	720	10	25	956	13,246	14,202	4,628	
1996	7,359	2,819	2,186	655	755	52	3	944	13,828	14,772	4,813	
1997	7,599	2,801	2,191	624	760	95	14	1,080	14,084	15,164	4,941	
1998	7,127	2,758	2,056	566	623	98	6	1,157	13,234	14,391	4,689	
1999	7,571	2,787	2,105	492	668	140	14	1,279	13,777	15,056	4,906	
2000	7,864	2,819	2,188	632	676	147	9	1,078	14,335	15,413	5,022	
2001	7,506	2,801	2,243	629	578	69	11	1,187	13,838	15,026	4,896	
2002	7,855	2,814	2,348	399	660	141	13	1,045	14,230	15,275	4,977	
2003	7,617	2,743	2,182	421	539	127	12	1,138	13,642	14,779	4,816	
2004	7,705	2,699	2,151	502	549	125	11	1,022	13,741	14,763	4,810	
2005	7,508	2,632	2,102	413	522	118	11	1,256	13,307	14,563	4,745	
2006	7,657	2,606	2,134	459	574	122	4	817	13,556	14,373	4,683	
2007	7,912	2,590	2,110	611	656	145	8	543	14,033	14,576	4,750	
2008	7,572	2,617	1,897	594	615	149	4	517	13,447	13,964	4,550	
2009	7,121	2,569	1,650	644	543	153	7	472	12,686	13,158	4,287	
2010	6,672	2,576	1,585	574	469	153	7	481	12,035	12,516	4,078	
5 Yr. Avg.	7,554	2,603	1,979	544	582	137	7	721	13,406	14,127	4,603	
10 Yr. Avg.	7,632	2,689	2,101	530	591	130	9	907	13,681	14,589	4,754	

Five year average = 2005 through 2009.

Ten year average = 2000 through 2009.

Hermosa-Redondo District Historical Demand per Service



California Water Service Company - Hermosa Redondo District

Worksheet 5

Water Supply and Demand Analysis and Projections

Demand per Service (Gallons per Year)

Year	Multi-Residential			Commercial	Industrial	Government	Recycled	Total Other	Unaccounted/ Total Services	Combined Demand/Service
	Residential	(Service)	(Unit)							
1980	114,559	716,048	61,313	331,953	10,589,574	868,795		212,073	15,575	215,490
1981	120,191	756,018	65,878	335,535	11,376,489	916,529		450,776	13,780	225,040
1982	113,536	764,493	67,391	334,715	8,465,372	784,242		443,844	17,266	215,809
1983	109,480	767,852	67,949	330,780	8,183,412	722,107		190,903	21,769	215,859
1984	121,416	788,538	70,277	352,004	10,270,056	930,010		356,322	17,831	232,118
1985	116,976	772,251	69,363	345,126	10,891,688	842,805		817,696	17,159	225,961
1986	116,624	749,662	67,890	345,577	9,713,664	820,876		465,064	16,886	221,123
1987	118,440	744,752	68,747	361,906	8,968,430	784,351		145,421	13,703	219,087
1988	116,550	717,147	67,092	362,207	8,159,751	746,909			15,412	215,290
1989	120,834	703,542	66,422	353,421	7,747,396	769,002			15,818	216,799
1990	112,947	675,746	64,003	347,953	7,301,430	736,911			15,360	206,462
1991	90,822	591,393	55,617	297,716	5,264,977	555,263		1,124,429	11,110	167,571
1992	100,122	596,907	56,656	302,703	8,905,310	590,728		826,597	6,034	177,070
1993	106,035	599,915	56,800	302,632	7,744,655	633,708		500,727	8,753	182,926
1994	111,688	613,719	57,973	309,828	6,223,288	673,908		352,332	13,455	191,136
1995	110,570	619,013	58,425	311,198	5,492,217	639,648	3,104,416	503,486	12,641	187,887
1996	116,394	629,918	59,192	320,896	5,615,016	679,830	3,398,699	105,288	12,452	194,938
1997	119,817	626,069	58,880	323,635	5,806,465	697,364	3,885,943	490,888	14,231	199,751
1998	111,762	616,790	58,027	305,316	5,419,835	588,145	1,996,037	262,379	15,186	188,826
1999	117,619	623,265	58,697	314,099	4,712,134	661,157	2,396,050	358,605	16,662	196,143
2000	122,799	638,363	61,680	331,139	6,052,687	690,759	2,525,305	213,409	14,139	202,149
2001	114,879	621,405	57,623	329,245	5,259,189	545,568	1,128,661	327,851	15,232	192,791
2002	119,935	624,098	53,819	345,277	3,335,257	625,167	2,304,075	340,301	13,387	195,643
2003	116,540	608,839	52,359	322,084	3,606,536	508,803	2,073,301	452,156	14,602	189,704
2004	116,502	600,709	51,544	319,295	4,192,064	513,772	2,142,933	354,203	12,989	187,717
2005	112,746	585,928	48,883	312,624	3,367,786	487,421	2,023,678	292,177	15,882	184,114
2006	114,475	581,248	47,789	317,836	3,738,091	536,270	2,200,686	146,119	10,290	181,103
2007	117,639	580,042	53,358	314,587	4,979,446	663,815	2,622,463	295,314	6,822	183,055
2008	112,249	518,705	54,639	306,145	5,862,144	556,644	2,694,608	112,616	6,469	174,575
2009	105,483	464,816	53,901	287,826	8,066,446	482,204	2,494,192	215,065	5,890	164,341
2010	98,521	464,745	#DIV/0!	274,349	7,478,156	417,423	2,494,192	211,767	5,990	155,805
5 Yr. Avg.	112,518	546,148	51,714	307,804	5,202,782	545,271	2,407,125	212,258	9,071	177,438
10 Yr. Avg.	115,325	582,415	53,559	318,606	4,845,964	561,042	2,220,990	274,921	11,570	185,519

Five year average is from years 2005 through 2009.

Ten year average is from years 2000 through 2009.

California Water Service Company - Hermosa Redondo District
Water Supply and Demand Analysis and Projections
Demand per Service (Gallons per Day)

Year	Multi-Residential						Total Other	Unaccounted/ Total Services	Combined Demand/Serv
	Residential	(Service)	(Unit)	Commercial	Industrial	Government			
1980	314	1,962	168	909	29,013	2,380	581	43	590
1981	329	2,071	180	919	31,168	2,511	1,235	38	617
1982	311	2,095	185	917	23,193	2,149	1,216	47	591
1983	300	2,104	186	906	22,420	1,978	523	60	591
1984	333	2,160	193	964	28,137	2,548	976	49	636
1985	320	2,116	190	946	29,840	2,309	2,240	47	619
1986	320	2,054	186	947	26,613	2,249	1,274	46	606
1987	324	2,040	188	992	24,571	2,149	398	38	600
1988	319	1,965	184	992	22,355	2,046		42	590
1989	331	1,928	182	968	21,226	2,107		43	594
1990	309	1,851	175	953	20,004	2,019		42	566
1991	249	1,620	152	816	14,425	1,521	3,081	30	459
1992	274	1,635	155	829	24,398	1,618	2,265	17	485
1993	291	1,644	156	829	21,218	1,736	1,372	24	501
1994	306	1,681	159	849	17,050	1,846	965	37	524
1995	303	1,696	160	853	15,047	1,752	8,505	35	515
1996	319	1,726	162	879	15,384	1,863	9,312	34	534
1997	328	1,715	161	887	15,908	1,911	10,646	39	547
1998	306	1,690	159	836	14,849	1,611	5,469	42	517
1999	322	1,708	161	861	12,910	1,811	6,565	46	537
2000	336	1,749	169	907	16,583	1,892	6,919	39	554
2001	315	1,702	158	902	14,409	1,495	3,092	42	528
2002	329	1,710	147	946	9,138	1,713	6,313	37	536
2003	319	1,668	143	882	9,881	1,394	5,680	40	520
2004	319	1,646	141	875	11,485	1,408	5,871	36	514
2005	309	1,605	134	857	9,227	1,335	5,544	44	504
2006	314	1,592	131	871	10,241	1,469	6,029	28	496
2007	322	1,589	146	862	13,642	1,819	7,185	19	502
2008	308	1,421	150	839	16,061	1,525	7,382	18	478
2009	289	1,273	148	789	22,100	1,321	6,833	16	450
2010	270	1,273	#DIV/0!	752	20,488	1,144	6,833	16	427
5 Yr. Avg.	308	1,496	142	843	14,254	1,494	6,595	25	486
10 Yr. Avg.	316	1,596	147	873	13,277	1,537	6,085	32	508

Five year average is from years 2005 through 2009.

Ten year average is from years 2000 through 2009.

California Water Service Company - Hermosa Redondo District
Water Supply and Demand Analysis and Projections
Percentage Change in Annual Demand

Worksheet 7

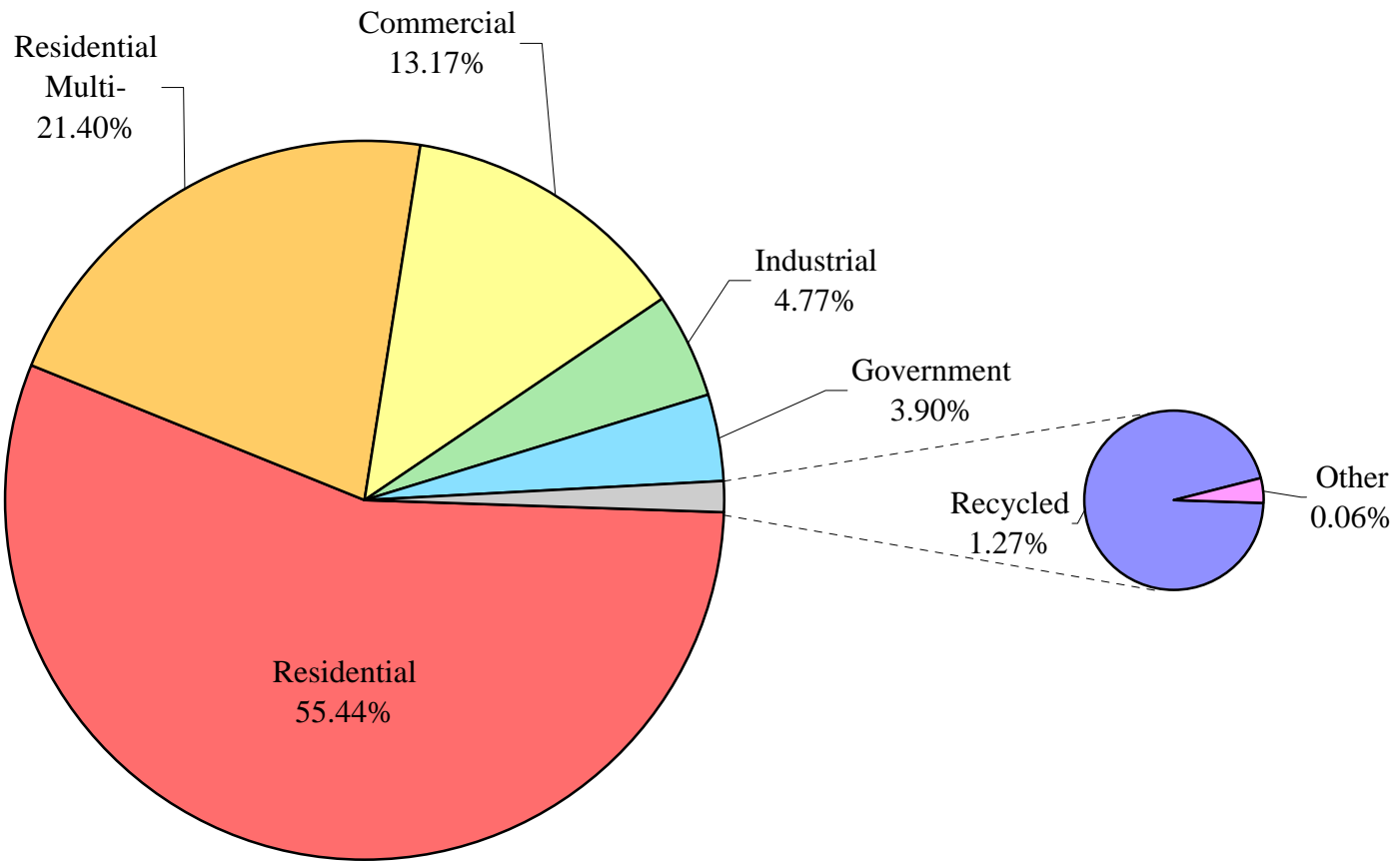
Year	Multi-							Unaccounted Water	Total
	Residential	Residential	Commercial	Industrial	Government	Recycled	Other		
1981	5.02%	10.04%	1.31%	9.82%	7.35%	0.00%	32.85%	-11.22%	4.79%
1982	-5.50%	3.50%	0.39%	-27.21%	-14.43%	0.00%	-40.92%	25.56%	-3.90%
1983	-3.39%	1.31%	-0.55%	-1.18%	-7.13%	0.00%	-28.31%	26.45%	0.31%
1984	11.72%	4.14%	6.70%	22.77%	29.89%	0.00%	123.98%	-17.49%	8.31%
1985	-2.92%	-0.17%	-1.73%	3.70%	-8.61%	0.00%	282.47%	-3.01%	-1.89%
1986	0.42%	-0.72%	0.13%	-12.84%	-3.15%	0.00%	-43.13%	-0.89%	-1.44%
1987	2.50%	2.51%	5.66%	-7.67%	-4.99%	0.00%	-84.37%	-18.03%	0.08%
1988	-0.08%	-1.63%	0.30%	-9.02%	-3.96%	0.00%	-100.00%	14.07%	-0.34%
1989	4.64%	-0.52%	-2.47%	-7.26%	4.69%	0.00%	0.00%	3.53%	1.58%
1990	-5.41%	-3.02%	-1.94%	-1.27%	-3.38%	0.00%	0.00%	-1.89%	-3.78%
1991	-18.93%	-12.24%	-14.86%	-27.89%	-23.82%	0.00%	0.00%	-27.16%	-18.27%
1992	10.65%	1.00%	1.09%	61.45%	6.39%	0.00%	-15.99%	-45.55%	5.94%
1993	6.19%	0.57%	-0.38%	-15.10%	6.99%	0.00%	-39.42%	45.33%	3.50%
1994	5.92%	2.23%	2.38%	-21.60%	4.32%	0.00%	5.55%	54.40%	4.95%
1995	-0.85%	0.79%	-0.19%	-16.16%	-3.51%	100.00%	90.53%	-5.95%	-1.60%
1996	5.58%	1.69%	3.63%	2.24%	4.83%	447.40%	-89.54%	-1.25%	4.01%
1997	3.27%	-0.61%	0.22%	-4.75%	0.60%	82.94%	424.51%	14.50%	2.66%
1998	-6.21%	-1.55%	-6.17%	-9.33%	-18.04%	2.73%	-52.49%	7.13%	-5.10%
1999	6.23%	1.05%	2.41%	-13.06%	7.20%	42.55%	122.10%	10.50%	4.62%
2000	3.86%	1.16%	3.93%	28.45%	1.30%	5.39%	-35.91%	-15.71%	2.37%
2001	-4.54%	-0.63%	2.52%	-0.33%	-14.58%	-52.95%	20.71%	10.12%	-2.51%
2002	4.64%	0.43%	4.68%	-36.58%	14.26%	104.14%	13.23%	-11.96%	1.66%
2003	-3.03%	-2.51%	-7.05%	5.36%	-18.38%	-10.02%	-0.35%	8.84%	-3.25%
2004	1.15%	-1.60%	-1.45%	19.29%	1.85%	-1.81%	-12.96%	-10.20%	-0.11%
2005	-2.56%	-2.46%	-2.27%	-17.60%	-4.86%	-5.57%	-1.01%	22.98%	-1.35%
2006	1.98%	-1.00%	1.53%	11.00%	10.02%	3.02%	-62.49%	-34.99%	-1.31%
2007	3.34%	-0.62%	-1.11%	33.21%	14.21%	19.17%	102.10%	-33.48%	1.42%
2008	-4.31%	1.04%	-10.12%	-2.88%	-6.25%	2.75%	-53.39%	-4.73%	-4.20%
2009	-5.95%	-1.83%	-13.02%	8.41%	-11.69%	2.85%	73.61%	-8.87%	-5.78%
2010	-6.31%	0.26%	-3.97%	-10.86%	-13.67%	0.00%	8.31%	2.04%	-4.88%
5 Yr. Avg.	-1.50%	-0.97%	-5.00%	6.43%	0.29%	4.44%	11.76%	-11.82%	-2.24%
10 Yr. Avg.	-0.54%	-0.80%	-2.24%	4.83%	-1.41%	6.70%	4.35%	-7.80%	-1.31%

Five year average is from years 2005 through 2009.

Ten year average is from years 2000 through 2009.

Hermosa-Redondo District

Percent of Total Sales by Type of Use (2010)



California Water Service Company - Hermosa Redondo District
Water Supply and Demand Analysis and Projections
Percentage of Total Sales

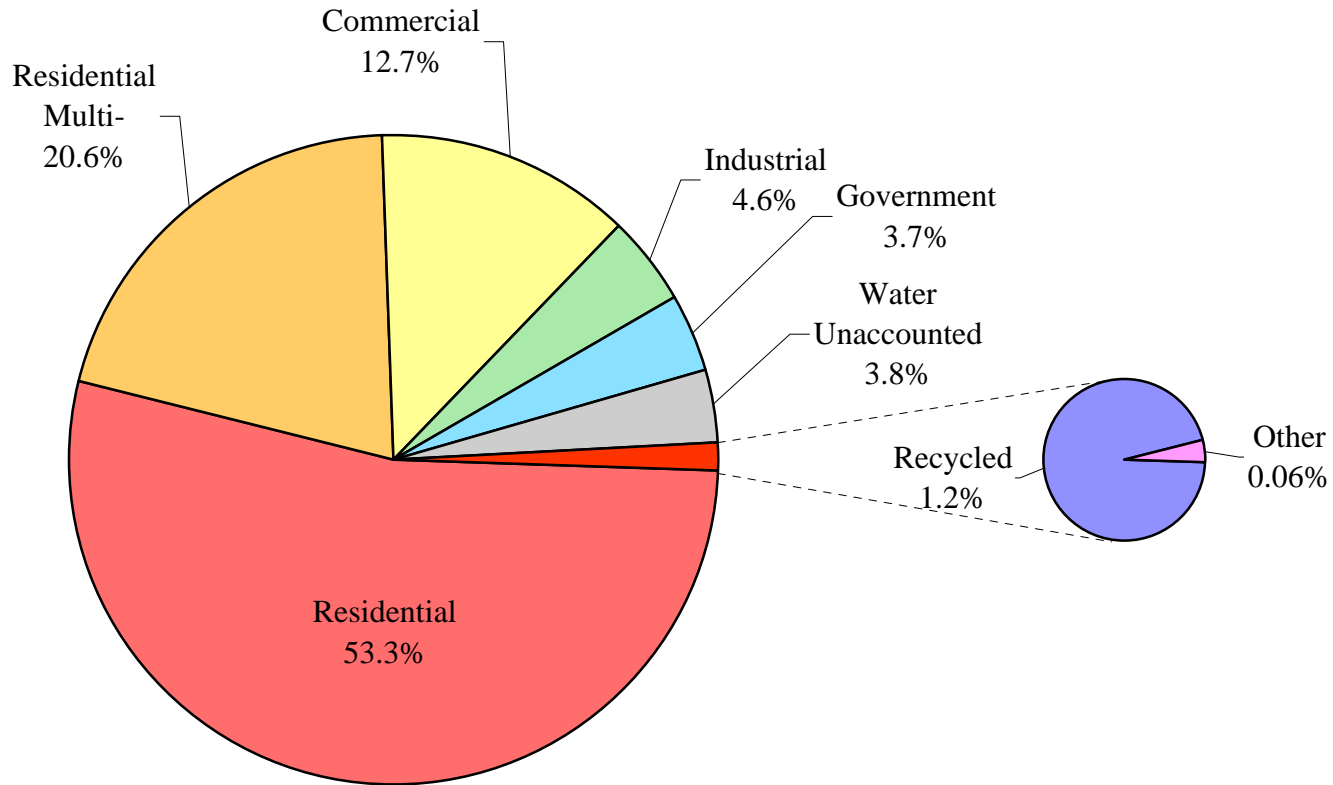
Year	Residential	Multi-Residential	Commercial	Industrial	Government	Recycled	Other	Percent Total
1980	47.69%	18.87%	16.21%	10.60%	6.61%	0.00%	0.04%	100.00%
1981	47.23%	19.58%	15.49%	10.97%	6.69%	0.00%	0.05%	100.00%
1982	47.39%	21.52%	16.51%	8.48%	6.08%	0.00%	0.03%	100.00%
1983	46.70%	22.23%	16.74%	8.55%	5.76%	0.00%	0.02%	100.00%
1984	46.91%	20.82%	16.07%	9.44%	6.72%	0.00%	0.04%	100.00%
1985	46.37%	21.16%	16.08%	9.97%	6.26%	0.00%	0.17%	100.00%
1986	47.27%	21.33%	16.34%	8.82%	6.15%	0.00%	0.10%	100.00%
1987	47.69%	21.53%	17.00%	8.01%	5.75%	0.00%	0.02%	100.00%
1988	48.29%	21.46%	17.27%	7.39%	5.60%	0.00%	0.00%	100.00%
1989	49.82%	21.04%	16.61%	6.75%	5.78%	0.00%	0.00%	100.00%
1990	49.05%	21.24%	16.95%	6.94%	5.81%	0.00%	0.00%	100.00%
1991	48.23%	22.61%	17.51%	6.07%	5.37%	0.00%	0.21%	100.00%
1992	48.70%	20.84%	16.15%	8.94%	5.21%	0.00%	0.16%	100.00%
1993	50.69%	20.54%	15.77%	7.44%	5.47%	0.00%	0.09%	100.00%
1994	52.39%	20.50%	15.75%	5.69%	5.56%	0.00%	0.10%	100.00%
1995	52.62%	20.92%	15.93%	4.84%	5.44%	0.07%	0.19%	100.00%
1996	53.21%	20.38%	15.81%	4.74%	5.46%	0.38%	0.02%	100.00%
1997	53.96%	19.89%	15.56%	4.43%	5.39%	0.68%	0.10%	100.00%
1998	53.86%	20.84%	15.53%	4.27%	4.71%	0.74%	0.05%	100.00%
1999	54.96%	20.23%	15.28%	3.57%	4.85%	1.01%	0.10%	100.00%
2000	54.86%	19.67%	15.26%	4.41%	4.72%	1.03%	0.06%	100.00%
2001	54.24%	20.24%	16.21%	4.55%	4.17%	0.50%	0.08%	100.00%
2002	55.20%	19.77%	16.50%	2.81%	4.64%	0.99%	0.09%	100.00%
2003	55.84%	20.11%	16.00%	3.08%	3.95%	0.93%	0.09%	100.00%
2004	56.07%	19.64%	15.65%	3.65%	3.99%	0.91%	0.08%	100.00%
2005	56.42%	19.78%	15.80%	3.11%	3.92%	0.89%	0.08%	100.00%
2006	56.48%	19.22%	15.74%	3.39%	4.24%	0.90%	0.03%	100.00%
2007	56.38%	18.46%	15.04%	4.36%	4.67%	1.03%	0.06%	100.00%
2008	56.31%	19.46%	14.11%	4.42%	4.57%	1.11%	0.03%	100.00%
2009	56.13%	20.25%	13.01%	5.07%	4.28%	1.21%	0.05%	100.00%
2010	55.44%	21.40%	13.17%	4.77%	3.90%	1.27%	0.06%	100.00%
5 Yr. Avg.	56.35%	19.44%	14.74%	4.07%	4.34%	1.03%	0.05%	100.00%
10 Yr. Avg.	55.79%	19.66%	15.33%	3.88%	4.32%	0.95%	0.07%	100.00%

Five year average is from years 2005 through 2009.

Ten year average is from years 2000 through 2009.

Hermosa-Redondo District

Percent of Total Demand by Type of Use (2010)



California Water Service Company - Hermosa Redondo District

Worksheet 9

Water Supply and Demand Analysis and Projections

Percentage of Total Demand

Year	Residential	Multi-Residential	Commercial	Industrial	Government	Recycled	Other	Unaccounted Water	Percent Total
1980	44.24%	17.50%	15.04%	9.83%	6.13%	0.00%	0.03%	7.23%	100.00%
1981	44.34%	18.38%	14.54%	10.30%	6.28%	0.00%	0.04%	6.12%	100.00%
1982	43.60%	19.79%	15.19%	7.80%	5.59%	0.00%	0.03%	8.00%	100.00%
1983	41.99%	19.99%	15.06%	7.69%	5.18%	0.00%	0.02%	10.08%	100.00%
1984	43.31%	19.22%	14.83%	8.71%	6.21%	0.00%	0.04%	7.68%	100.00%
1985	42.85%	19.56%	14.85%	9.21%	5.78%	0.00%	0.16%	7.59%	100.00%
1986	43.66%	19.70%	15.09%	8.14%	5.68%	0.00%	0.09%	7.64%	100.00%
1987	44.71%	20.18%	15.93%	7.51%	5.39%	0.00%	0.01%	6.25%	100.00%
1988	44.83%	19.92%	16.04%	6.86%	5.20%	0.00%	0.00%	7.16%	100.00%
1989	46.18%	19.51%	15.40%	6.26%	5.36%	0.00%	0.00%	7.30%	100.00%
1990	45.40%	19.66%	15.69%	6.42%	5.38%	0.00%	0.00%	7.44%	100.00%
1991	45.04%	21.11%	16.35%	5.67%	5.01%	0.00%	0.19%	6.63%	100.00%
1992	47.04%	20.13%	15.60%	8.64%	5.03%	0.00%	0.15%	3.41%	100.00%
1993	48.26%	19.56%	15.01%	7.09%	5.20%	0.00%	0.09%	4.78%	100.00%
1994	48.71%	19.05%	14.65%	5.29%	5.17%	0.00%	0.09%	7.04%	100.00%
1995	49.08%	19.52%	14.85%	4.51%	5.07%	0.07%	0.17%	6.73%	100.00%
1996	49.82%	19.08%	14.80%	4.43%	5.11%	0.35%	0.02%	6.39%	100.00%
1997	50.11%	18.47%	14.45%	4.11%	5.01%	0.63%	0.09%	7.12%	100.00%
1998	49.53%	19.16%	14.28%	3.93%	4.33%	0.68%	0.04%	8.04%	100.00%
1999	50.29%	18.51%	13.98%	3.27%	4.43%	0.93%	0.10%	8.49%	100.00%
2000	51.02%	18.29%	14.20%	4.10%	4.39%	0.96%	0.06%	6.99%	100.00%
2001	49.96%	18.64%	14.93%	4.19%	3.84%	0.46%	0.07%	7.90%	100.00%
2002	51.42%	18.42%	15.37%	2.61%	4.32%	0.93%	0.08%	6.84%	100.00%
2003	51.54%	18.56%	14.77%	2.85%	3.65%	0.86%	0.08%	7.70%	100.00%
2004	52.19%	18.28%	14.57%	3.40%	3.72%	0.85%	0.07%	6.92%	100.00%
2005	51.56%	18.08%	14.43%	2.84%	3.58%	0.81%	0.07%	8.63%	100.00%
2006	53.27%	18.13%	14.85%	3.19%	4.00%	0.85%	0.03%	5.68%	100.00%
2007	54.28%	17.77%	14.48%	4.19%	4.50%	0.99%	0.06%	3.73%	100.00%
2008	54.22%	18.74%	13.58%	4.25%	4.40%	1.07%	0.03%	3.71%	100.00%
2009	54.12%	19.53%	12.54%	4.89%	4.13%	1.16%	0.05%	3.58%	100.00%
2010	53.30%	20.58%	12.66%	4.58%	3.75%	1.22%	0.06%	3.84%	100.00%
5 Yr. Avg.	53.49%	18.45%	13.98%	3.87%	4.12%	0.98%	0.05%	5.06%	100.00%
10 Yr. Avg.	52.36%	18.44%	14.37%	3.65%	4.05%	0.89%	0.06%	6.17%	100.00%

Five year average is from years 2005 through 2009.

Ten year average is from years 2000 through 2009.

California Water Service Company - Hermosa-Redondo District
Water Supply and Demand Analysis and Projections

Worksheet 10

2000's Projections

Scenario #1: Based on Maintaining Growth at the 10-Year Average Annual Growth and 5-Year Low Demand per Service for each Customer Class. Average High

Summary of Historical Growth Rate from Worksheet 2			
Customer Type	10 Yr. Avg. Historical Growth Rate	Individual Growth Rate Selected	Notes
Single Family Residential	0.480%	0.480%	Historical growth rate used
Multi Family Residential	2.243%	0.425%	Percent changed to overall growth rate
Commercial	-1.497%	0.425%	Percent changed to overall growth rate
Industrial	-2.137%	0.000%	Growth rate set to zero to maintain present levels.
Government	1.227%	1.227%	Historical growth rate used
Recycled Water	0.611%	0.425%	Percent changed to overall growth rate
Other	-1.041%	0.425%	Percent changed to overall growth rate
Overall	0.425%	0.483%	

Summary of Lowest Demand per Service from Worksheets 5 and 6										
Demand/Serv. Units	Multi-Residential					Government	Reclaimed	Total Other	Unaccounted Total Serv.	Combined Demand/Serv.
	Residential	(service)	(unit)	Commercial	Industrial					
Gal/Service/Yr	105,483	464,816	53,901	287,826	3,335,257	482,204	1,128,661	215,065	5,890	164,341
AF/Service/Yr	0.324	1.426	0.165	0.883	10.236	1.480	3.464	0.660	0.018	0.504
Gal/Service/Day	289	1,273	148	789	9,138	1,321	3,092	589	16	450

California Water Service Company - Hermosa-Redondo District
Water Supply and Demand Analysis and Projections

30-year projection Summary

Scenario #1: Based on Maintaining Growth at the 10-Year Average Annual Growth and 5-Year Demand per Service for each Customer Class.
 Low Average High

Customer Type	Projected Services 2010	Projected Services 2015	Projected Services 2020	Projected Services 2025	Projected Services 2030	Projected Services 2035	Projected Services 2040	Services projected to be added from 2010 - 2040
Single Family Residential	22,103	22,638	23,187	23,749	24,324	24,913	25,517	3,415
Multi Family Residential	1,809	1,847	1,887	1,927	1,969	2,011	2,054	245
Commercial	1,876	1,916	1,957	1,999	2,042	2,086	2,130	255
Industrial	26	26	26	26	26	26	26	0
Government	372	395	420	446	474	504	536	164
Recycled Water	20	21	21	21	22	22	23	3
Other	10	10	10	11	11	11	11	1
Total	26,215	26,853	27,508	28,179	28,868	29,574	30,297	4,083

Customer Type	Projected Demand 2010 (ccf)	Projected Demand 2015 (ccf)	Projected Demand 2020 (ccf)	Projected Demand 2025 (ccf)	Projected Demand 2030 (ccf)	Projected Demand 2035 (ccf)	Projected Demand 2040 (ccf)	Projected demand to be added from 2010 - 2040 (ccf)
Single Family Residential	3,116,672	3,192,194	3,269,545	3,348,771	3,429,917	3,513,029	3,598,155	481,483
Multi Family Residential	1,123,836	1,147,921	1,172,522	1,197,651	1,223,319	1,249,536	1,276,315	152,480
Commercial	721,798	737,267	753,068	769,207	785,692	802,530	819,730	97,932
Industrial	115,923	115,923	115,923	115,923	115,923	115,923	115,923	0
Government	239,475	254,532	270,535	287,545	305,624	324,840	345,264	105,789
Recycled Water	30,304	30,954	31,617	32,295	32,987	33,694	34,416	4,112
Other	2,887	2,949	3,012	3,077	3,143	3,210	3,279	392
Unaccounted	206,404	211,432	216,587	221,872	227,292	232,850	238,549	32,145
Total	5,557,298	5,693,170	5,832,809	5,976,340	6,123,896	6,275,612	6,431,631	874,332

Customer Type	Projected Demand 2010 (AF)	Projected Demand 2015 (AF)	Projected Demand 2020 (AF)	Projected Demand 2025 (AF)	Projected Demand 2030 (AF)	Projected Demand 2035 (AF)	Projected Demand 2040 (AF)	Projected demand to be added from 2010 - 2040 (AF)
Single Family Residential	7,155	7,328	7,506	7,688	7,874	8,065	8,260	1,105
Multi Family Residential	2,580	2,635	2,692	2,749	2,808	2,869	2,930	350
Commercial	1,657	1,693	1,729	1,766	1,804	1,842	1,882	225
Industrial	266	266	266	266	266	266	266	0
Government	550	584	621	660	702	746	793	243
Recycled Water	70	71	73	74	76	77	79	9
Other	7	7	7	7	7	7	8	1
Unaccounted	474	485	497	509	522	535	548	74
Total	12,758	13,070	13,390	13,720	14,059	14,407	14,765	2,007
	12,284	12,584	12,893	13,211	13,537	13,872	14,217	

California Water Service Company - Hermosa Redondo District
Water Supply and Demand Analysis and Projections

2000's Projections

Scenario #1: Based on Maintaining Growth at the

- 10-Year
- 5-Year

Average Annual Growth and

- Low
- Average
- High

Demand per Service for each Customer Class.

Customer Type	Actual Services 2001	Actual Services 2002	Actual Services 2003	Actual Services 2004	Actual Services 2005	Actual Services 2006	Actual Services 2007	Actual Services 2008	Actual Services 2009	Projected Services 2010
Resident	21,292	21,341	21,298	21,551	21,699	21,795	21,917	21,980	21,997	22,103
Multi- Residential	1,469	1,469	1,468	1,464	1,464	1,461	1,455	1,644	1,801	1,809
Commercial	2,220	2,216	2,208	2,195	2,191	2,188	2,186	2,019	1,868	1,876
Industrial	39	39	38	39	40	40	40	33	26	26
Government	345	344	345	348	349	349	322	360	367	372
Recycled	20	20	20	19	19	18	18	18	20	20
Other	11	12	9	10	12	9	9	11	10	10
Total	25,396	25,441	25,386	25,626	25,774	25,860	25,947	26,065	26,089	26,215

Customer Type	Demand 2001(ccf)	Demand 2002(ccf)	Demand 2003(ccf)	Demand 2004(ccf)	Demand 2005(ccf)	Demand 2006(ccf)	Demand 2007(ccf)	Demand 2008(ccf)	Demand 2009(ccf)	Demand 2010(ccf)
Resident	3,002,372	3,009,281	3,003,218	3,038,893	3,059,763	3,073,299	3,090,503	3,099,386	3,101,783	3,116,672
Multi- Residential	912,786	912,786	912,165	909,679	909,679	907,815	904,087	1,021,525	1,119,079	1,123,836
Commercial	854,181	852,642	849,564	844,562	843,023	841,868	841,099	776,843	718,743	721,798
Industrial	173,884	173,884	169,426	173,884	178,343	178,343	178,343	147,133	115,923	115,923
Government	222,391	221,746	222,391	224,324	224,969	224,969	207,565	232,060	236,572	239,475
Recycled	30,176	30,176	30,176	28,667	28,667	27,158	27,158	27,158	30,176	30,304
Other	3,162	3,450	2,587	2,875	3,450	2,587	2,587	3,162	2,875	2,887
Unaccounted	199,957	200,312	199,879	201,768	202,934	203,611	204,296	205,225	205,414	206,404
Total	5,398,909	5,404,277	5,389,404	5,424,653	5,450,827	5,459,651	5,455,637	5,512,492	5,530,565	5,557,298

Customer Type	Demand 2001(AF)	Demand 2002(AF)	Demand 2003(AF)	Demand 2004(AF)	Demand 2005(AF)	Demand 2006(AF)	Demand 2007(AF)	Demand 2008(AF)	Demand 2009(AF)	Demand 2010(AF)
Resident	6,893	6,908	6,894	6,976	7,024	7,055	7,095	7,115	7,121	7,155
Multi- Residential	2,095	2,095	2,094	2,088	2,088	2,084	2,076	2,345	2,569	2,580
Commercial	1,961	1,957	1,950	1,939	1,935	1,933	1,931	1,783	1,650	1,657
Industrial	399	399	389	399	409	409	409	338	266	266
Government	511	509	511	515	516	516	477	533	543	550
Recycled	69	69	69	66	66	62	62	62	69	70
Other	7	8	6	7	8	6	6	7	7	7
Unaccounted	459	460	459	463	466	467	469	471	472	474
Total	12,394	12,407	12,372	12,453	12,513	12,534	12,525	12,655	12,697	12,758

California Water Service Company - Hermosa Redondo District
Water Supply and Demand Analysis and Projections

2010's Projections

Scenario #1: Based on Maintaining Growth at the

- 10-Year
- 5-Year

Average Annual Growth and

- Low
- Average
- High

Demand per Service for each Customer Class.

Customer Type	Projected Services 2011	Projected Services 2012	Projected Services 2013	Projected Services 2014	Projected Services 2015	Projected Services 2016	Projected Services 2017	Projected Services 2018	Projected Services 2019	Projected Services 2020
Resident	22,209	22,315	22,422	22,530	22,638	22,747	22,856	22,966	23,076	23,187
Multi- Residential	1,816	1,824	1,832	1,840	1,847	1,855	1,863	1,871	1,879	1,887
Commercial	1,884	1,892	1,900	1,908	1,916	1,924	1,932	1,941	1,949	1,957
Industrial	26	26	26	26	26	26	26	26	26	26
Government	376	381	385	390	395	400	405	410	415	420
Recycled	20	20	20	20	21	21	21	21	21	21
Other	10	10	10	10	10	10	10	10	10	10
Total	26,341	26,468	26,596	26,724	26,853	26,983	27,113	27,244	27,376	27,508

Customer Type	Demand 2011(ccf)	Demand 2012(ccf)	Demand 2013(ccf)	Demand 2014(ccf)	Demand 2015(ccf)	Demand 2016(ccf)	Demand 2017(ccf)	Demand 2018(ccf)	Demand 2019(ccf)	Demand 2020(ccf)
Resident	3,131,632	3,146,664	3,161,768	3,176,944	3,192,194	3,207,516	3,222,912	3,238,382	3,253,926	3,269,545
Multi- Residential	1,128,612	1,133,408	1,138,225	1,143,063	1,147,921	1,152,800	1,157,699	1,162,619	1,167,560	1,172,522
Commercial	724,865	727,946	731,040	734,147	737,267	740,400	743,547	746,707	749,881	753,068
Industrial	115,923	115,923	115,923	115,923	115,923	115,923	115,923	115,923	115,923	115,923
Government	242,413	245,388	248,398	251,446	254,532	257,655	260,816	264,016	267,256	270,535
Recycled	30,433	30,562	30,692	30,823	30,954	31,085	31,217	31,350	31,483	31,617
Other	2,899	2,912	2,924	2,937	2,949	2,962	2,974	2,987	3,000	3,012
Unaccounted	207,400	208,400	209,406	210,416	211,432	212,453	213,478	214,509	215,545	216,587
Total	5,584,177	5,611,203	5,638,376	5,665,698	5,693,170	5,720,793	5,748,567	5,776,494	5,804,574	5,832,809

Customer Type	Demand 2011(AF)	Demand 2012(AF)	Demand 2013(AF)	Demand 2014(AF)	Demand 2015(AF)	Demand 2016(AF)	Demand 2017(AF)	Demand 2018(AF)	Demand 2019(AF)	Demand 2020(AF)
Resident	7,189	7,224	7,258	7,293	7,328	7,363	7,399	7,434	7,470	7,506
Multi- Residential	2,591	2,602	2,613	2,624	2,635	2,646	2,658	2,669	2,680	2,692
Commercial	1,664	1,671	1,678	1,685	1,693	1,700	1,707	1,714	1,722	1,729
Industrial	266	266	266	266	266	266	266	266	266	266
Government	557	563	570	577	584	591	599	606	614	621
Recycled	70	70	70	71	71	71	72	72	72	73
Other	7	7	7	7	7	7	7	7	7	7
Unaccounted	476	478	481	483	485	488	490	492	495	497
Total	12,820	12,882	12,944	13,007	13,070	13,133	13,197	13,261	13,326	13,390

California Water Service Company - Hermosa Redondo District
Water Supply and Demand Analysis and Projections

2020's Projections

Scenario #1: Based on Maintaining Growth at the

- 10-Year
- 5-Year

Average Annual Growth and

- Low
- Average
- High

Demand per Service for each Customer Class.

Customer Type	Projected Services 2021	Projected Services 2022	Projected Services 2023	Projected Services 2024	Projected Services 2025	Projected Services 2026	Projected Services 2027	Projected Services 2028	Projected Services 2029	Projected Services 2030
Resident	23,298	23,410	23,522	23,635	23,749	23,863	23,977	24,092	24,208	24,324
Multi- Residential	1,895	1,903	1,911	1,919	1,927	1,936	1,944	1,952	1,960	1,969
Commercial	1,966	1,974	1,982	1,991	1,999	2,008	2,016	2,025	2,033	2,042
Industrial	26	26	26	26	26	26	26	26	26	26
Government	425	430	435	441	446	452	457	463	468	474
Recycled	21	21	21	21	21	21	22	22	22	22
Other	11	11	11	11	11	11	11	11	11	11
Total	27,641	27,775	27,909	28,044	28,179	28,316	28,453	28,590	28,729	28,868

Customer Type	Demand 2021(ccf)	Demand 2022(ccf)	Demand 2023(ccf)	Demand 2024(ccf)	Demand 2025(ccf)	Demand 2026(ccf)	Demand 2027(ccf)	Demand 2028(ccf)	Demand 2029(ccf)	Demand 2030(ccf)
Resident	3,285,239	3,301,008	3,316,853	3,332,774	3,348,771	3,364,845	3,380,997	3,397,225	3,413,532	3,429,917
Multi- Residential	1,177,506	1,182,510	1,187,536	1,192,583	1,197,651	1,202,741	1,207,853	1,212,986	1,218,141	1,223,319
Commercial	756,268	759,482	762,710	765,952	769,207	772,476	775,759	779,056	782,367	785,692
Industrial	115,923	115,923	115,923	115,923	115,923	115,923	115,923	115,923	115,923	115,923
Government	273,854	277,215	280,616	284,059	287,545	291,073	294,644	298,260	301,919	305,624
Recycled	31,751	31,886	32,022	32,158	32,295	32,432	32,570	32,708	32,847	32,987
Other	3,025	3,038	3,051	3,064	3,077	3,090	3,103	3,116	3,129	3,143
Unaccounted	217,633	218,685	219,742	220,805	221,872	222,945	224,024	225,108	226,197	227,292
Total	5,861,200	5,889,747	5,918,452	5,947,317	5,976,340	6,005,525	6,034,872	6,064,382	6,094,056	6,123,896

Customer Type	Demand 2021(AF)	Demand 2022(AF)	Demand 2023(AF)	Demand 2024(AF)	Demand 2025(AF)	Demand 2026(AF)	Demand 2027(AF)	Demand 2028(AF)	Demand 2029(AF)	Demand 2030(AF)
Resident	7,542	7,578	7,614	7,651	7,688	7,725	7,762	7,799	7,836	7,874
Multi- Residential	2,703	2,715	2,726	2,738	2,749	2,761	2,773	2,785	2,796	2,808
Commercial	1,736	1,744	1,751	1,758	1,766	1,773	1,781	1,788	1,796	1,804
Industrial	266	266	266	266	266	266	266	266	266	266
Government	629	636	644	652	660	668	676	685	693	702
Recycled	73	73	74	74	74	74	75	75	75	76
Other	7	7	7	7	7	7	7	7	7	7
Unaccounted	500	502	504	507	509	512	514	517	519	522
Total	13,456	13,521	13,587	13,653	13,720	13,787	13,854	13,922	13,990	14,059

California Water Service Company - Hermosa Redondo District
Water Supply and Demand Analysis and Projections

2030's Projections

Scenario #1: Based on Maintaining Growth at the

- 10-Year
- 5-Year

Average Annual Growth and

- Low
- Average
- High

Demand per Service for each Customer Class.

Customer Type	Projected Services 2031	Projected Services 2032	Projected Services 2033	Projected Services 2034	Projected Services 2035	Projected Services 2036	Projected Services 2037	Projected Services 2038	Projected Services 2039	Projected Services 2040
Resident	24,441	24,558	24,676	24,794	24,913	25,033	25,153	25,274	25,395	25,517
Multi- Residential	1,977	1,986	1,994	2,002	2,011	2,019	2,028	2,037	2,045	2,054
Commercial	2,051	2,059	2,068	2,077	2,086	2,095	2,104	2,112	2,121	2,130
Industrial	26	26	26	26	26	26	26	26	26	26
Government	480	486	492	498	504	510	516	523	529	536
Recycled	22	22	22	22	22	22	23	23	23	23
Other	11	11	11	11	11	11	11	11	11	11
Total	29,007	29,148	29,289	29,431	29,574	29,717	29,861	30,006	30,151	30,297

Customer Type	Demand 2031(ccf)	Demand 2032(ccf)	Demand 2033(ccf)	Demand 2034(ccf)	Demand 2035(ccf)	Demand 2036(ccf)	Demand 2037(ccf)	Demand 2038(ccf)	Demand 2039(ccf)	Demand 2040(ccf)
Resident	3,446,381	3,462,923	3,479,545	3,496,247	3,513,029	3,529,892	3,546,835	3,563,860	3,580,966	3,598,155
Multi- Residential	1,228,518	1,233,739	1,238,982	1,244,248	1,249,536	1,254,846	1,260,180	1,265,535	1,270,914	1,276,315
Commercial	789,031	792,385	795,752	799,134	802,530	805,941	809,366	812,806	816,261	819,730
Industrial	115,923	115,923	115,923	115,923	115,923	115,923	115,923	115,923	115,923	115,923
Government	309,374	313,170	317,012	320,902	324,840	328,825	332,860	336,944	341,079	345,264
Recycled	33,127	33,268	33,409	33,551	33,694	33,837	33,981	34,125	34,270	34,416
Other	3,156	3,170	3,183	3,197	3,210	3,224	3,237	3,251	3,265	3,279
Unaccounted	228,392	229,498	230,610	231,727	232,850	233,978	235,112	236,252	237,398	238,549
Total	6,153,902	6,184,075	6,214,417	6,244,929	6,275,612	6,306,466	6,337,495	6,368,697	6,400,076	6,431,631

Customer Type	Demand 2031(AF)	Demand 2032(AF)	Demand 2033(AF)	Demand 2034(AF)	Demand 2035(AF)	Demand 2036(AF)	Demand 2037(AF)	Demand 2038(AF)	Demand 2039(AF)	Demand 2040(AF)
Resident	7,912	7,950	7,988	8,026	8,065	8,104	8,142	8,182	8,221	8,260
Multi- Residential	2,820	2,832	2,844	2,856	2,869	2,881	2,893	2,905	2,918	2,930
Commercial	1,811	1,819	1,827	1,835	1,842	1,850	1,858	1,866	1,874	1,882
Industrial	266	266	266	266	266	266	266	266	266	266
Government	710	719	728	737	746	755	764	774	783	793
Recycled	76	76	77	77	77	78	78	78	79	79
Other	7	7	7	7	7	7	7	7	7	8
Unaccounted	524	527	529	532	535	537	540	542	545	548
Total	14,128	14,197	14,266	14,336	14,407	14,478	14,549	14,621	14,693	14,765

California Water Service Company - Hermosa-Redondo District
Water Supply and Demand Analysis and Projections

Worksheet 11

2000's Projections

Scenario #2: Based on Maintaining Growth at the 10-Year Average Annual Growth and Average Demand per Service for each Customer Class.
 5-Year Low High

Summary of Historical Growth Rate from Worksheet 2			
Customer Type	10 Yr. Avg. Historical Growth Rate	Individual Growth Rate Selected	Notes
Single Family Residential	0.480%	0.480%	Historical growth rate used
Multi Family Residential	2.243%	0.425%	Percent changed to overall growth rate
Commercial	-1.497%	0.425%	Percent changed to overall growth rate
Industrial	-2.137%	0.000%	Growth rate set to zero to maintain present levels.
Government	1.227%	1.227%	Historical growth rate used
Recycled Water	0.611%	0.425%	Percent changed to overall growth rate
Other	-1.041%	0.425%	Percent changed to overall growth rate
Overall	0.425%	0.483%	

Summary of Average Demand per Service from Worksheets 5 and 6										
Demand/Serv. Units	Multi-Residential						Reclaimed	Total Other	Unaccounted Total Serv.	Combined Demand/Serv.
	Residential	(service)	(unit)	Commercial	Industrial	Government				
Gal/Service/Yr	111,688	613,719	57,973	309,828	6,223,288	673,908	2,467,827	352,332	13,455	191,136
AF/Service/Yr	0.343	1.883	0.178	0.951	19.099	2.068	7.573	1.081	0.041	0.587
Gal/Service/Day	306	1,681	159	849	17,050	1,846	6,761	965	37	524

California Water Service Company - Hermosa-Redondo District

Water Supply and Demand Analysis and Projections

30-year projection Summary

Scenario #2: Based on Maintaining Growth at the 10-Year 5-Year Average Annual Growth and Low Average High Demand per Service for each Customer Class.

Customer Type	Projected Services 2010	Projected Services 2015	Projected Services 2020	Projected Services 2025	Projected Services 2030	Projected Services 2035	Projected Services 2040	Services projected to be added from 2010 - 2040
Single Family Residential	22,103	22,638	23,187	23,749	24,324	24,913	25,517	3,415
Multi Family Residential	1,809	1,847	1,887	1,927	1,969	2,011	2,054	245
Commercial	1,876	1,916	1,957	1,999	2,042	2,086	2,130	255
Industrial	26	26	26	26	26	26	26	0
Government	372	395	420	446	474	504	536	164
Recycled Water	20	21	21	21	22	22	23	3
Other	10	10	10	11	11	11	11	1
Total	26,215	26,853	27,508	28,179	28,868	29,574	30,297	4,083

Customer Type	Projected Demand 2010 (ccf)	Projected Demand 2015 (ccf)	Projected Demand 2020 (ccf)	Projected Demand 2025 (ccf)	Projected Demand 2030 (ccf)	Projected Demand 2035 (ccf)	Projected Demand 2040 (ccf)	Projected demand to be added from 2010 - 2040 (ccf)
Single Family Residential	3,300,025	3,379,989	3,461,891	3,545,778	3,631,698	3,719,699	3,809,833	509,809
Multi Family Residential	1,483,856	1,515,657	1,548,140	1,581,319	1,615,208	1,649,825	1,685,183	201,327
Commercial	776,973	793,625	810,633	828,006	845,752	863,877	882,391	105,418
Industrial	216,302	216,302	216,302	216,302	216,302	216,302	216,302	0
Government	334,680	355,722	378,088	401,860	427,127	453,982	482,526	147,846
Recycled Water	66,260	67,680	69,131	70,612	72,126	73,671	75,250	8,990
Other	4,730	4,831	4,935	5,041	5,149	5,259	5,372	642
Unaccounted	471,514	482,999	494,775	506,849	519,230	531,927	544,947	73,433
Total	6,654,339	6,816,806	6,983,895	7,155,767	7,332,591	7,514,542	7,701,803	1,047,464

Customer Type	Projected Demand 2010 (AF)	Projected Demand 2015 (AF)	Projected Demand 2020 (AF)	Projected Demand 2025 (AF)	Projected Demand 2030 (AF)	Projected Demand 2035 (AF)	Projected Demand 2040 (AF)	Projected demand to be added from 2010 - 2040 (AF)
Single Family Residential	7,576	7,759	7,947	8,140	8,337	8,539	8,746	1,170
Multi Family Residential	3,406	3,479	3,554	3,630	3,708	3,788	3,869	462
Commercial	1,784	1,822	1,861	1,901	1,942	1,983	2,026	242
Industrial	497	497	497	497	497	497	497	0
Government	768	817	868	923	981	1,042	1,108	339
Recycled Water	152	155	159	162	166	169	173	21
Other	11	11	11	12	12	12	12	1
Unaccounted	1,082	1,109	1,136	1,164	1,192	1,221	1,251	169
Total	15,276	15,649	16,033	16,427	16,833	17,251	17,681	2,405

California Water Service Company - Hermosa Redondo District
Water Supply and Demand Analysis and Projections

2000's Projections

Scenario #2: Based on Maintaining Growth at the

10-Year
 5-Year Average Annual Growth and

Low
 Average Demand per Service for each Customer Class.
 High

Customer Type	Actual Services 2001	Actual Services 2002	Actual Services 2003	Actual Services 2004	Actual Services 2005	Actual Services 2006	Actual Services 2007	Actual Services 2008	Actual Services 2009	Projected Services 2010
Resident	21,292	21,341	21,298	21,551	21,699	21,795	21,917	21,980	21,997	22,103
Multi- Residential	1,469	1,469	1,468	1,464	1,464	1,461	1,455	1,644	1,801	1,809
Commercial	2,220	2,216	2,208	2,195	2,191	2,188	2,186	2,019	1,868	1,876
Industrial	39	39	38	39	40	40	40	33	26	26
Government	345	344	345	348	349	349	322	360	367	372
Recycled	20	20	20	19	19	18	18	18	20	20
Other	11	12	9	10	12	9	9	11	10	10
Total	25,396	25,441	25,386	25,626	25,774	25,860	25,947	26,065	26,089	26,215

Customer Type	Demand 2001(ccf)	Demand 2002(ccf)	Demand 2003(ccf)	Demand 2004(ccf)	Demand 2005(ccf)	Demand 2006(ccf)	Demand 2007(ccf)	Demand 2008(ccf)	Demand 2009(ccf)	Demand 2010(ccf)
Resident	3,179,000	3,186,316	3,179,896	3,217,670	3,239,767	3,254,101	3,272,316	3,281,722	3,284,260	3,300,025
Multi- Residential	1,205,197	1,205,197	1,204,376	1,201,095	1,201,095	1,198,634	1,193,711	1,348,770	1,477,576	1,483,856
Commercial	919,476	917,819	914,506	909,121	907,465	906,222	905,394	836,226	773,685	776,973
Industrial	324,452	324,452	316,133	324,452	332,772	332,772	332,772	274,537	216,302	216,302
Government	310,804	309,903	310,804	313,506	314,407	314,407	290,083	324,317	330,623	334,680
Recycled	65,980	65,980	65,980	62,681	62,681	59,382	59,382	59,382	65,980	66,260
Other	5,181	5,652	4,239	4,710	5,652	4,239	4,239	5,181	4,710	4,730
Unaccounted	456,786	457,596	456,606	460,923	463,585	465,132	466,697	468,819	469,251	471,514
Total	6,466,876	6,472,915	6,452,540	6,494,159	6,527,423	6,534,888	6,524,593	6,598,954	6,622,387	6,654,339

Customer Type	Demand 2001(AF)	Demand 2002(AF)	Demand 2003(AF)	Demand 2004(AF)	Demand 2005(AF)	Demand 2006(AF)	Demand 2007(AF)	Demand 2008(AF)	Demand 2009(AF)	Demand 2010(AF)
Resident	7,298	7,315	7,300	7,387	7,438	7,470	7,512	7,534	7,540	7,576
Multi- Residential	2,767	2,767	2,765	2,757	2,757	2,752	2,740	3,096	3,392	3,406
Commercial	2,111	2,107	2,099	2,087	2,083	2,080	2,079	1,920	1,776	1,784
Industrial	745	745	726	745	764	764	764	630	497	497
Government	714	711	714	720	722	722	666	745	759	768
Recycled	151	151	151	144	144	136	136	136	151	152
Other	12	13	10	11	13	10	10	12	11	11
Unaccounted	1,049	1,051	1,048	1,058	1,064	1,068	1,071	1,076	1,077	1,082
Total	14,846	14,860	14,813	14,909	14,985	15,002	14,979	15,149	15,203	15,276

**California Water Service Company - Hermosa Redondo District
Water Supply and Demand Analysis and Projections**

2010's Projections

Scenario #2: Based on Maintaining Growth at the

- 10-Year
- 5-Year

Average Annual Growth and

- Low
- Average
- High

Demand per Service for each Customer Class.

Customer Type	Projected Services 2011	Projected Services 2012	Projected Services 2013	Projected Services 2014	Projected Services 2015	Projected Services 2016	Projected Services 2017	Projected Services 2018	Projected Services 2019	Projected Services 2020
Resident	22,209	22,315	22,422	22,530	22,638	22,747	22,856	22,966	23,076	23,187
Multi- Residential	1,816	1,824	1,832	1,840	1,847	1,855	1,863	1,871	1,879	1,887
Commercial	1,884	1,892	1,900	1,908	1,916	1,924	1,932	1,941	1,949	1,957
Industrial	26	26	26	26	26	26	26	26	26	26
Government	376	381	385	390	395	400	405	410	415	420
Recycled	20	20	20	20	21	21	21	21	21	21
Other	10	10	10	10	10	10	10	10	10	10
Total	26,341	26,468	26,596	26,724	26,853	26,983	27,113	27,244	27,376	27,508

Customer Type	Demand 2011(ccf)	Demand 2012(ccf)	Demand 2013(ccf)	Demand 2014(ccf)	Demand 2015(ccf)	Demand 2016(ccf)	Demand 2017(ccf)	Demand 2018(ccf)	Demand 2019(ccf)	Demand 2020(ccf)
Resident	3,315,865	3,331,781	3,347,773	3,363,843	3,379,989	3,396,213	3,412,515	3,428,895	3,445,354	3,461,891
Multi- Residential	1,490,162	1,496,496	1,502,856	1,509,243	1,515,657	1,522,099	1,528,568	1,535,064	1,541,588	1,548,140
Commercial	780,275	783,591	786,922	790,266	793,625	796,998	800,385	803,787	807,203	810,633
Industrial	216,302	216,302	216,302	216,302	216,302	216,302	216,302	216,302	216,302	216,302
Government	338,786	342,943	347,151	351,411	355,722	360,087	364,505	368,978	373,505	378,088
Recycled	66,542	66,825	67,109	67,394	67,680	67,968	68,257	68,547	68,838	69,131
Other	4,750	4,770	4,791	4,811	4,831	4,852	4,873	4,893	4,914	4,935
Unaccounted	473,788	476,074	478,371	480,679	482,999	485,331	487,674	490,029	492,396	494,775
Total	6,686,470	6,718,781	6,751,273	6,783,948	6,816,806	6,849,849	6,883,078	6,916,494	6,950,100	6,983,895

Customer Type	Demand 2011(AF)	Demand 2012(AF)	Demand 2013(AF)	Demand 2014(AF)	Demand 2015(AF)	Demand 2016(AF)	Demand 2017(AF)	Demand 2018(AF)	Demand 2019(AF)	Demand 2020(AF)
Resident	7,612	7,649	7,685	7,722	7,759	7,797	7,834	7,872	7,909	7,947
Multi- Residential	3,421	3,436	3,450	3,465	3,479	3,494	3,509	3,524	3,539	3,554
Commercial	1,791	1,799	1,807	1,814	1,822	1,830	1,837	1,845	1,853	1,861
Industrial	497	497	497	497	497	497	497	497	497	497
Government	778	787	797	807	817	827	837	847	857	868
Recycled	153	153	154	155	155	156	157	157	158	159
Other	11	11	11	11	11	11	11	11	11	11
Unaccounted	1,088	1,093	1,098	1,103	1,109	1,114	1,120	1,125	1,130	1,136
Total	15,350	15,424	15,499	15,574	15,649	15,725	15,801	15,878	15,955	16,033

**California Water Service Company - Hermosa Redondo District
Water Supply and Demand Analysis and Projections**

2020's Projections

Scenario #2: Based on Maintaining Growth at the

- 10-Year
- 5-Year

Average Annual Growth and

- Low
- Average
- High

Demand per Service for each Customer Class.

Customer Type	Projected Services 2021	Projected Services 2022	Projected Services 2023	Projected Services 2024	Projected Services 2025	Projected Services 2026	Projected Services 2027	Projected Services 2028	Projected Services 2029	Projected Services 2030
Resident	23,298	23,410	23,522	23,635	23,749	23,863	23,977	24,092	24,208	24,324
Multi- Residential	1,895	1,903	1,911	1,919	1,927	1,936	1,944	1,952	1,960	1,969
Commercial	1,966	1,974	1,982	1,991	1,999	2,008	2,016	2,025	2,033	2,042
Industrial	26	26	26	26	26	26	26	26	26	26
Government	425	430	435	441	446	452	457	463	468	474
Recycled	21	21	21	21	21	21	22	22	22	22
Other	11	11	11	11	11	11	11	11	11	11
Total	27,641	27,775	27,909	28,044	28,179	28,316	28,453	28,590	28,729	28,868

Customer Type	Demand 2021(ccf)	Demand 2022(ccf)	Demand 2023(ccf)	Demand 2024(ccf)	Demand 2025(ccf)	Demand 2026(ccf)	Demand 2027(ccf)	Demand 2028(ccf)	Demand 2029(ccf)	Demand 2030(ccf)
Resident	3,478,509	3,495,205	3,511,982	3,528,840	3,545,778	3,562,798	3,579,899	3,597,083	3,614,349	3,631,698
Multi- Residential	1,554,719	1,561,327	1,567,963	1,574,626	1,581,319	1,588,039	1,594,788	1,601,566	1,608,373	1,615,208
Commercial	814,078	817,538	821,013	824,502	828,006	831,525	835,059	838,608	842,172	845,752
Industrial	216,302	216,302	216,302	216,302	216,302	216,302	216,302	216,302	216,302	216,302
Government	382,727	387,423	392,177	396,989	401,860	406,791	411,782	416,835	421,949	427,127
Recycled	69,425	69,720	70,016	70,314	70,612	70,912	71,214	71,516	71,820	72,126
Other	4,956	4,977	4,998	5,019	5,041	5,062	5,084	5,105	5,127	5,149
Unaccounted	497,166	499,568	501,983	504,410	506,849	509,301	511,764	514,241	516,729	519,230
Total	7,017,881	7,052,060	7,086,433	7,121,002	7,155,767	7,190,730	7,225,893	7,261,256	7,296,822	7,332,591

Customer Type	Demand 2021(AF)	Demand 2022(AF)	Demand 2023(AF)	Demand 2024(AF)	Demand 2025(AF)	Demand 2026(AF)	Demand 2027(AF)	Demand 2028(AF)	Demand 2029(AF)	Demand 2030(AF)
Resident	7,986	8,024	8,062	8,101	8,140	8,179	8,218	8,258	8,297	8,337
Multi- Residential	3,569	3,584	3,600	3,615	3,630	3,646	3,661	3,677	3,692	3,708
Commercial	1,869	1,877	1,885	1,893	1,901	1,909	1,917	1,925	1,933	1,942
Industrial	497	497	497	497	497	497	497	497	497	497
Government	879	889	900	911	923	934	945	957	969	981
Recycled	159	160	161	161	162	163	163	164	165	166
Other	11	11	11	12	12	12	12	12	12	12
Unaccounted	1,141	1,147	1,152	1,158	1,164	1,169	1,175	1,181	1,186	1,192
Total	16,111	16,189	16,268	16,348	16,427	16,508	16,588	16,670	16,751	16,833

California Water Service Company - Hermosa Redondo District
Water Supply and Demand Analysis and Projections

2030's Projections

Scenario #2: Based on Maintaining Growth at the

10-Year
 5-Year
 Average Annual Growth and

Low
 Average
 High
 Demand per Service for each Customer Class.

Customer Type	Projected Services 2031	Projected Services 2032	Projected Services 2033	Projected Services 2034	Projected Services 2035	Projected Services 2036	Projected Services 2037	Projected Services 2038	Projected Services 2039	Projected Services 2040
Resident	24,441	24,558	24,676	24,794	24,913	25,033	25,153	25,274	25,395	25,517
Multi- Residential	1,977	1,986	1,994	2,002	2,011	2,019	2,028	2,037	2,045	2,054
Commercial	2,051	2,059	2,068	2,077	2,086	2,095	2,104	2,112	2,121	2,130
Industrial	26	26	26	26	26	26	26	26	26	26
Government	480	486	492	498	504	510	516	523	529	536
Recycled	22	22	22	22	22	22	23	23	23	23
Other	11	11	11	11	11	11	11	11	11	11
Total	29,007	29,148	29,289	29,431	29,574	29,717	29,861	30,006	30,151	30,297

Customer Type	Demand 2031(ccf)	Demand 2032(ccf)	Demand 2033(ccf)	Demand 2034(ccf)	Demand 2035(ccf)	Demand 2036(ccf)	Demand 2037(ccf)	Demand 2038(ccf)	Demand 2039(ccf)	Demand 2040(ccf)
Resident	3,649,130	3,666,646	3,684,246	3,701,930	3,719,699	3,737,554	3,755,494	3,773,521	3,791,633	3,809,833
Multi- Residential	1,622,073	1,628,967	1,635,890	1,642,842	1,649,825	1,656,836	1,663,878	1,670,949	1,678,051	1,685,183
Commercial	849,346	852,956	856,581	860,221	863,877	867,549	871,236	874,938	878,657	882,391
Industrial	216,302	216,302	216,302	216,302	216,302	216,302	216,302	216,302	216,302	216,302
Government	432,368	437,673	443,043	448,479	453,982	459,552	465,191	470,899	476,677	482,526
Recycled	72,432	72,740	73,049	73,360	73,671	73,985	74,299	74,615	74,932	75,250
Other	5,171	5,193	5,215	5,237	5,259	5,281	5,304	5,326	5,349	5,372
Unaccounted	521,744	524,270	526,810	529,362	531,927	534,504	537,095	539,699	542,316	544,947
Total	7,368,565	7,404,746	7,441,134	7,477,733	7,514,542	7,551,563	7,588,798	7,626,249	7,663,917	7,701,803

Customer Type	Demand 2031(AF)	Demand 2032(AF)	Demand 2033(AF)	Demand 2034(AF)	Demand 2035(AF)	Demand 2036(AF)	Demand 2037(AF)	Demand 2038(AF)	Demand 2039(AF)	Demand 2040(AF)
Resident	8,377	8,418	8,458	8,499	8,539	8,580	8,621	8,663	8,704	8,746
Multi- Residential	3,724	3,740	3,756	3,771	3,788	3,804	3,820	3,836	3,852	3,869
Commercial	1,950	1,958	1,966	1,975	1,983	1,992	2,000	2,009	2,017	2,026
Industrial	497	497	497	497	497	497	497	497	497	497
Government	993	1,005	1,017	1,030	1,042	1,055	1,068	1,081	1,094	1,108
Recycled	166	167	168	168	169	170	171	171	172	173
Other	12	12	12	12	12	12	12	12	12	12
Unaccounted	1,198	1,204	1,209	1,215	1,221	1,227	1,233	1,239	1,245	1,251
Total	16,916	16,999	17,083	17,167	17,251	17,336	17,422	17,508	17,594	17,681

California Water Service Company - Hermosa-Redondo District
Water Supply and Demand Analysis and Projections

Worksheet 12

Scenario #3: Based on Maintaining Growth at the

- 10-Year
 5-Year

Average Annual Growth and

Low

Average

High

2000's Projections

Demand per Service for each Customer Class.

Summary of Historical Growth Rate from Worksheet 2			
Customer Type	10 Yr. Avg. Historical Growth Rate	Individual Growth Rate Selected	Notes
Single Family Residential	0.480%	0.480%	Historical growth rate used
Multi Family Residential	2.243%	0.425%	Percent changed to overall growth rate
Commercial	-1.497%	0.425%	Percent changed to overall growth rate
Industrial	-2.137%	0.000%	Growth rate set to zero to maintain present levels.
Government	1.227%	1.227%	Historical growth rate used
Recycled Water	0.611%	0.425%	Percent changed to overall growth rate
Other	-1.041%	0.425%	Percent changed to overall growth rate
Overall	0.425%	0.483%	

Summary of Maximum Demand per Service from Worksheets 5 and 6										
Demand/Serv. Units	Multi-Residential						Total Other	Unaccounted Total Serv.	Combined Demand/Serv.	
	Residential	(service)	(unit)	Commercial	Industrial	Government				Reclaimed
Gal/Service/Yr	121,416	788,538	70,277	352,004	10,270,056	930,010	3,885,943	356,322	17,831	232,118
AF/Service/Yr	0.373	2.420	0.216	1.080	31.518	2.854	11.926	1.094	0.055	0.712
Gal/Service/Day	333	2,160	193	964	28,137	2,548	10,646	976	49	636

California Water Service Company - Hermosa-Redondo District
Water Supply and Demand Analysis and Projections

30-year projection Summary

Scenario #3: Based on Maintaining Growth at the

10-Year Average Annual Growth and
 5-Year

Low
 Average Demand per Service for each Customer Class.
 High

Customer Type	Projected Services 2010	Projected Services 2015	Projected Services 2020	Projected Services 2025	Projected Services 2030	Projected Services 2035	Projected Services 2040	Services projected to be added from 2010 - 2040
Single Family Residential	22,103	22,638	23,187	23,749	24,324	24,913	25,517	3,415
Multi Family Residential	1,809	1,847	1,887	1,927	1,969	2,011	2,054	245
Commercial	1,876	1,916	1,957	1,999	2,042	2,086	2,130	255
Industrial	26	26	26	26	26	26	26	0
Government	372	395	420	446	474	504	536	164
Recycled Water	20	21	21	21	22	22	23	3
Other	10	10	10	11	11	11	11	1
Total	26,215	26,853	27,508	28,179	28,868	29,574	30,297	4,083

Customer Type	Projected Demand 2010 (ccf)	Projected Demand 2015 (ccf)	Projected Demand 2020 (ccf)	Projected Demand 2025 (ccf)	Projected Demand 2030 (ccf)	Projected Demand 2035 (ccf)	Projected Demand 2040 (ccf)	Projected demand to be added from 2010 - 2040 (ccf)
Single Family Residential	3,587,435	3,674,364	3,763,399	3,854,592	3,947,995	4,043,661	4,141,645	554,210
Multi Family Residential	1,906,533	1,947,393	1,989,128	2,031,758	2,075,302	2,119,778	2,165,208	258,675
Commercial	882,740	901,659	920,982	940,720	960,881	981,474	1,002,509	119,768
Industrial	356,954	356,954	356,954	356,954	356,954	356,954	356,954	0
Government	461,867	490,906	521,771	554,577	589,446	626,507	665,898	204,031
Recycled Water	104,336	106,572	108,856	111,189	113,572	116,006	118,492	14,156
Other	4,784	4,886	4,991	5,098	5,207	5,319	5,433	649
Unaccounted	624,880	640,101	655,707	671,709	688,117	704,943	722,198	97,318
Total	7,929,530	8,122,836	8,321,790	8,526,598	8,737,474	8,954,642	9,178,337	1,248,807

Customer Type	Projected Demand 2010 (AF)	Projected Demand 2015 (AF)	Projected Demand 2020 (AF)	Projected Demand 2025 (AF)	Projected Demand 2030 (AF)	Projected Demand 2035 (AF)	Projected Demand 2040 (AF)	Projected demand to be added from 2010 - 2040 (AF)
Single Family Residential	8,236	8,435	8,640	8,849	9,063	9,283	9,508	1,272
Multi Family Residential	4,377	4,471	4,566	4,664	4,764	4,866	4,971	594
Commercial	2,027	2,070	2,114	2,160	2,206	2,253	2,301	275
Industrial	819	819	819	819	819	819	819	0
Government	1,060	1,127	1,198	1,273	1,353	1,438	1,529	468
Recycled Water	240	245	250	255	261	266	272	32
Other	11	11	11	12	12	12	12	1
Unaccounted	1,435	1,469	1,505	1,542	1,580	1,618	1,658	223
Total	18,204	18,648	19,104	19,575	20,059	20,557	21,071	2,867

California Water Service Company - Hermosa Redondo District
Water Supply and Demand Analysis and Projections

2000's Projections

Scenario #3: Based on Maintaining Growth at the 10-Year Average Annual Growth and Low Demand per Service for each Customer Class.
 5-Year Average High

Customer Type	Actual Services 2001	Actual Services 2002	Actual Services 2003	Actual Services 2004	Actual Services 2005	Actual Services 2006	Actual Services 2007	Actual Services 2008	Actual Services 2009	Projected Services 2010
Resident	21,292	21,341	21,298	21,551	21,699	21,795	21,917	21,980	21,997	22,103
Multi- Residential	1,469	1,469	1,468	1,464	1,464	1,461	1,455	1,644	1,801	1,809
Commercial	2,220	2,216	2,208	2,195	2,191	2,188	2,186	2,019	1,868	1,876
Industrial	39	39	38	39	40	40	40	33	26	26
Government	345	344	345	348	349	349	322	360	367	372
Recycled	20	20	20	19	19	18	18	18	20	20
Other	11	12	9	10	12	9	9	11	10	10
Total	25,396	25,441	25,386	25,626	25,774	25,860	25,947	26,065	26,089	26,215

Customer Type	Demand 2001(ccf)	Demand 2002(ccf)	Demand 2003(ccf)	Demand 2004(ccf)	Demand 2005(ccf)	Demand 2006(ccf)	Demand 2007(ccf)	Demand 2008(ccf)	Demand 2009(ccf)	Demand 2010(ccf)
Resident	3,455,870	3,463,823	3,456,844	3,497,908	3,521,930	3,537,511	3,557,313	3,567,538	3,570,298	3,587,435
Multi- Residential	1,548,498	1,548,498	1,547,444	1,543,227	1,543,227	1,540,065	1,533,740	1,732,969	1,898,465	1,906,533
Commercial	1,044,641	1,042,759	1,038,995	1,032,877	1,030,995	1,029,583	1,028,642	950,059	879,004	882,740
Industrial	535,431	535,431	521,702	535,431	549,160	549,160	549,160	453,057	356,954	356,954
Government	428,917	427,674	428,917	432,647	433,890	433,890	400,323	447,566	456,268	461,867
Recycled	103,895	103,895	103,895	98,700	98,700	93,505	93,505	93,505	103,895	104,336
Other	5,240	5,716	4,287	4,763	5,716	4,287	4,287	5,240	4,763	4,784
Unaccounted	605,362	606,435	605,124	610,845	614,373	616,423	618,496	621,309	621,881	624,880
Total	7,727,855	7,734,231	7,707,208	7,756,399	7,797,991	7,804,425	7,785,467	7,871,243	7,891,529	7,929,530

Customer Type	Demand 2001(AF)	Demand 2002(AF)	Demand 2003(AF)	Demand 2004(AF)	Demand 2005(AF)	Demand 2006(AF)	Demand 2007(AF)	Demand 2008(AF)	Demand 2009(AF)	Demand 2010(AF)
Resident	7,934	7,952	7,936	8,030	8,085	8,121	8,167	8,190	8,196	8,236
Multi- Residential	3,555	3,555	3,552	3,543	3,543	3,536	3,521	3,978	4,358	4,377
Commercial	2,398	2,394	2,385	2,371	2,367	2,364	2,361	2,181	2,018	2,027
Industrial	1,229	1,229	1,198	1,229	1,261	1,261	1,261	1,040	819	819
Government	985	982	985	993	996	996	919	1,027	1,047	1,060
Recycled	239	239	239	227	227	215	215	215	239	240
Other	12	13	10	11	13	10	10	12	11	11
Unaccounted	1,390	1,392	1,389	1,402	1,410	1,415	1,420	1,426	1,428	1,435
Total	17,741	17,755	17,693	17,806	17,902	17,917	17,873	18,070	18,117	18,204

California Water Service Company - Hermosa Redondo District
Water Supply and Demand Analysis and Projections

2010's Projections

Scenario #3: Based on Maintaining Growth at the 10-Year Average Annual Growth and Low Demand per Service for each Customer Class.
 5-Year Average High

Customer Type	Projected Services 2011	Projected Services 2012	Projected Services 2013	Projected Services 2014	Projected Services 2015	Projected Services 2016	Projected Services 2017	Projected Services 2018	Projected Services 2019	Projected Services 2020
Resident	22,209	22,315	22,422	22,530	22,638	22,747	22,856	22,966	23,076	23,187
Multi- Residential	1,816	1,824	1,832	1,840	1,847	1,855	1,863	1,871	1,879	1,887
Commercial	1,884	1,892	1,900	1,908	1,916	1,924	1,932	1,941	1,949	1,957
Industrial	26	26	26	26	26	26	26	26	26	26
Government	376	381	385	390	395	400	405	410	415	420
Recycled	20	20	20	20	21	21	21	21	21	21
Other	10	10	10	10	10	10	10	10	10	10
Total	26,341	26,468	26,596	26,724	26,853	26,983	27,113	27,244	27,376	27,508

Customer Type	Demand 2011(ccf)	Demand 2012(ccf)	Demand 2013(ccf)	Demand 2014(ccf)	Demand 2015(ccf)	Demand 2016(ccf)	Demand 2017(ccf)	Demand 2018(ccf)	Demand 2019(ccf)	Demand 2020(ccf)
Resident	3,604,655	3,621,957	3,639,343	3,656,811	3,674,364	3,692,001	3,709,723	3,727,529	3,745,421	3,763,399
Multi- Residential	1,914,636	1,922,773	1,930,945	1,939,152	1,947,393	1,955,669	1,963,981	1,972,328	1,980,710	1,989,128
Commercial	886,492	890,259	894,043	897,843	901,659	905,491	909,339	913,204	917,085	920,982
Industrial	356,954	356,954	356,954	356,954	356,954	356,954	356,954	356,954	356,954	356,954
Government	467,534	473,270	479,077	484,956	490,906	496,930	503,027	509,199	515,447	521,771
Recycled	104,780	105,225	105,672	106,121	106,572	107,025	107,480	107,937	108,396	108,856
Other	4,804	4,824	4,845	4,865	4,886	4,907	4,928	4,949	4,970	4,991
Unaccounted	627,894	630,923	633,967	637,027	640,101	643,191	646,297	649,418	652,555	655,707
Total	7,967,749	8,006,187	8,044,847	8,083,729	8,122,836	8,162,168	8,201,728	8,241,518	8,281,538	8,321,790

Customer Type	Demand 2011(AF)	Demand 2012(AF)	Demand 2013(AF)	Demand 2014(AF)	Demand 2015(AF)	Demand 2016(AF)	Demand 2017(AF)	Demand 2018(AF)	Demand 2019(AF)	Demand 2020(AF)
Resident	8,275	8,315	8,355	8,395	8,435	8,476	8,516	8,557	8,598	8,640
Multi- Residential	4,395	4,414	4,433	4,452	4,471	4,490	4,509	4,528	4,547	4,566
Commercial	2,035	2,044	2,052	2,061	2,070	2,079	2,088	2,096	2,105	2,114
Industrial	819	819	819	819	819	819	819	819	819	819
Government	1,073	1,086	1,100	1,113	1,127	1,141	1,155	1,169	1,183	1,198
Recycled	241	242	243	244	245	246	247	248	249	250
Other	11	11	11	11	11	11	11	11	11	11
Unaccounted	1,441	1,448	1,455	1,462	1,469	1,477	1,484	1,491	1,498	1,505
Total	18,292	18,380	18,469	18,558	18,648	18,738	18,829	18,920	19,012	19,104

California Water Service Company - Hermosa Redondo District
Water Supply and Demand Analysis and Projections

2020's Projections

Scenario #3: Based on Maintaining Growth at the 10-Year Average Annual Growth and Low Demand per Service for each Customer Class.
 5-Year Average High

Customer Type	Projected Services 2021	Projected Services 2022	Projected Services 2023	Projected Services 2024	Projected Services 2025	Projected Services 2026	Projected Services 2027	Projected Services 2028	Projected Services 2029	Projected Services 2030
Resident	23,298	23,410	23,522	23,635	23,749	23,863	23,977	24,092	24,208	24,324
Multi- Residential	1,895	1,903	1,911	1,919	1,927	1,936	1,944	1,952	1,960	1,969
Commercial	1,966	1,974	1,982	1,991	1,999	2,008	2,016	2,025	2,033	2,042
Industrial	26	26	26	26	26	26	26	26	26	26
Government	425	430	435	441	446	452	457	463	468	474
Recycled	21	21	21	21	21	21	22	22	22	22
Other	11	11	11	11	11	11	11	11	11	11
Total	27,641	27,775	27,909	28,044	28,179	28,316	28,453	28,590	28,729	28,868

Customer Type	Demand 2021(ccf)	Demand 2022(ccf)	Demand 2023(ccf)	Demand 2024(ccf)	Demand 2025(ccf)	Demand 2026(ccf)	Demand 2027(ccf)	Demand 2028(ccf)	Demand 2029(ccf)	Demand 2030(ccf)
Resident	3,781,464	3,799,615	3,817,853	3,836,179	3,854,592	3,873,094	3,891,685	3,910,365	3,929,135	3,947,995
Multi- Residential	1,997,582	2,006,072	2,014,598	2,023,160	2,031,758	2,040,393	2,049,065	2,057,773	2,066,519	2,075,302
Commercial	924,897	928,827	932,775	936,739	940,720	944,718	948,733	952,766	956,815	960,881
Industrial	356,954	356,954	356,954	356,954	356,954	356,954	356,954	356,954	356,954	356,954
Government	528,174	534,654	541,214	547,855	554,577	561,382	568,270	575,243	582,301	589,446
Recycled	109,319	109,783	110,250	110,719	111,189	111,662	112,136	112,613	113,091	113,572
Other	5,012	5,033	5,055	5,076	5,098	5,119	5,141	5,163	5,185	5,207
Unaccounted	658,876	662,060	665,260	668,476	671,709	674,958	678,223	681,504	684,802	688,117
Total	8,362,277	8,402,999	8,443,959	8,485,158	8,526,598	8,568,281	8,610,208	8,652,382	8,694,803	8,737,474

Customer Type	Demand 2021(AF)	Demand 2022(AF)	Demand 2023(AF)	Demand 2024(AF)	Demand 2025(AF)	Demand 2026(AF)	Demand 2027(AF)	Demand 2028(AF)	Demand 2029(AF)	Demand 2030(AF)
Resident	8,681	8,723	8,765	8,807	8,849	8,891	8,934	8,977	9,020	9,063
Multi- Residential	4,586	4,605	4,625	4,645	4,664	4,684	4,704	4,724	4,744	4,764
Commercial	2,123	2,132	2,141	2,150	2,160	2,169	2,178	2,187	2,197	2,206
Industrial	819	819	819	819	819	819	819	819	819	819
Government	1,213	1,227	1,242	1,258	1,273	1,289	1,305	1,321	1,337	1,353
Recycled	251	252	253	254	255	256	257	259	260	261
Other	12	12	12	12	12	12	12	12	12	12
Unaccounted	1,513	1,520	1,527	1,535	1,542	1,550	1,557	1,565	1,572	1,580
Total	19,197	19,291	19,385	19,479	19,575	19,670	19,766	19,863	19,961	20,059

California Water Service Company - Hermosa Redondo District
Water Supply and Demand Analysis and Projections

2030's Projections

Scenario #3: Based on Maintaining Growth at the

10-Year Average Annual Growth and
 5-Year

Low
 Average Demand per Service for each Customer Class.
 High

Customer Type	Projected Services 2031	Projected Services 2032	Projected Services 2033	Projected Services 2034	Projected Services 2035	Projected Services 2036	Projected Services 2037	Projected Services 2038	Projected Services 2039	Projected Services 2040
Resident	24,441	24,558	24,676	24,794	24,913	25,033	25,153	25,274	25,395	25,517
Multi- Residential	1,977	1,986	1,994	2,002	2,011	2,019	2,028	2,037	2,045	2,054
Commercial	2,051	2,059	2,068	2,077	2,086	2,095	2,104	2,112	2,121	2,130
Industrial	26	26	26	26	26	26	26	26	26	26
Government	480	486	492	498	504	510	516	523	529	536
Recycled	22	22	22	22	22	22	23	23	23	23
Other	11	11	11	11	11	11	11	11	11	11
Total	29,007	29,148	29,289	29,431	29,574	29,717	29,861	30,006	30,151	30,297

Customer Type	Demand 2031(ccf)	Demand 2032(ccf)	Demand 2033(ccf)	Demand 2034(ccf)	Demand 2035(ccf)	Demand 2036(ccf)	Demand 2037(ccf)	Demand 2038(ccf)	Demand 2039(ccf)	Demand 2040(ccf)
Resident	3,966,945	3,985,987	4,005,119	4,024,344	4,043,661	4,063,070	4,082,573	4,102,169	4,121,860	4,141,645
Multi- Residential	2,084,122	2,092,979	2,101,874	2,110,807	2,119,778	2,128,787	2,137,835	2,146,920	2,156,045	2,165,208
Commercial	964,965	969,066	973,185	977,321	981,474	985,646	989,835	994,041	998,266	1,002,509
Industrial	356,954	356,954	356,954	356,954	356,954	356,954	356,954	356,954	356,954	356,954
Government	596,678	604,000	611,411	618,913	626,507	634,194	641,976	649,853	657,826	665,898
Recycled	114,055	114,539	115,026	115,515	116,006	116,499	116,994	117,491	117,991	118,492
Other	5,229	5,251	5,274	5,296	5,319	5,341	5,364	5,387	5,410	5,433
Unaccounted	691,449	694,797	698,162	701,544	704,943	708,359	711,793	715,244	718,712	722,198
Total	8,780,397	8,823,573	8,867,005	8,910,694	8,954,642	8,998,851	9,043,323	9,088,060	9,133,064	9,178,337

Customer Type	Demand 2031(AF)	Demand 2032(AF)	Demand 2033(AF)	Demand 2034(AF)	Demand 2035(AF)	Demand 2036(AF)	Demand 2037(AF)	Demand 2038(AF)	Demand 2039(AF)	Demand 2040(AF)
Resident	9,107	9,151	9,195	9,239	9,283	9,328	9,372	9,417	9,463	9,508
Multi- Residential	4,785	4,805	4,825	4,846	4,866	4,887	4,908	4,929	4,950	4,971
Commercial	2,215	2,225	2,234	2,244	2,253	2,263	2,272	2,282	2,292	2,301
Industrial	819	819	819	819	819	819	819	819	819	819
Government	1,370	1,387	1,404	1,421	1,438	1,456	1,474	1,492	1,510	1,529
Recycled	262	263	264	265	266	267	269	270	271	272
Other	12	12	12	12	12	12	12	12	12	12
Unaccounted	1,587	1,595	1,603	1,611	1,618	1,626	1,634	1,642	1,650	1,658
Total	20,157	20,256	20,356	20,456	20,557	20,659	20,761	20,863	20,967	21,071

California Water Service Company - Hermosa-Redondo District
Water Supply and Demand Analysis and Projections

Worksheet 13

2000's Projections

Scenario #4: Based on Maintaining Growth at the 10-Year Average Annual Growth
 5-Year

Summary of Historical Growth Rate from Worksheet 2			
Customer Type	5 Yr. Avg. Historical Growth Rate	Individual Growth Rate Selected	Notes
Single Family Residential	0.412%	0.412%	Historical growth rate used
Multi Family Residential	4.386%	0.000%	Growth rate set to zero to maintain present levels.
Commercial	-3.106%	0.000%	Growth rate set to zero to maintain present levels.
Industrial	-7.230%	0.358%	Percent changed to overall growth rate
Government	1.258%	1.258%	Historical growth rate used
Recycled Water	1.170%	0.358%	Percent changed to overall growth rate
Other	1.626%	0.358%	Percent changed to overall growth rate
Overall	0.358%	0.367%	

California Water Service Company - Hermosa-Redondo District
Water Supply and Demand Analysis and Projections

Worksheet 13

30-year projection Summary

Scenario #4: Based on Maintaining Growth at the 10-Year Average Annual Growth
 5-Year

Customer Type	Projected Services - 2010	Projected Services - 2015	Projected Services - 2020	Projected Services - 2025	Projected Services - 2030	Projected Services - 2035	Projected Services - 2040	Services projected to be added from 2010 - 2040
Single Family Residential	22,088	22,546	23,015	23,493	23,981	24,479	24,987	2,900
Multi Family Residential	1,801	1,801	1,801	1,801	1,801	1,801	1,801	0
Commercial	1,868	1,868	1,868	1,868	1,868	1,868	1,868	0
Industrial	26	27	27	28	28	29	29	3
Government	372	396	421	448	477	508	541	169
Recycled Water	20	20	21	21	22	22	22	2
Other	10	10	10	11	11	11	11	1
Total	26,184	26,668	27,163	27,669	28,187	28,717	29,259	3,075

California Water Service Company - Hermosa Redondo District
Water Supply and Demand Analysis and Projections

Worksheet 13

2000's Projections

Scenario #4: Based on Maintaining Growth at the 10-Year Average Annual Growth
 5-Year

Customer Type	Actual Services 2001	Actual Services 2002	Actual Services 2003	Actual Services 2004	Actual Services 2005	Actual Services 2006	Actual Services 2007	Actual Services 2008	Actual Services 2009	Projected Services 2010
Resident	21,292	21,341	21,298	21,551	21,699	21,795	21,917	21,980	21,997	22,088
Multi- Residential	1,469	1,469	1,468	1,464	1,464	1,461	1,455	1,644	1,801	1,801
Commercial	2,220	2,216	2,208	2,195	2,191	2,188	2,186	2,019	1,868	1,868
Industrial	39	39	38	39	40	40	40	33	26	26
Government	345	344	345	348	349	349	322	360	367	372
Recycled	20	20	20	19	19	18	18	18	20	20
Other	11	12	9	10	12	9	9	11	10	10
Total	25,396	25,441	25,386	25,626	25,774	25,860	25,947	26,065	26,089	26,184

2010's Projections

Customer Type	Projected Services 2011	Projected Services 2012	Projected Services 2013	Projected Services 2014	Projected Services 2015	Projected Services 2016	Projected Services 2017	Projected Services 2018	Projected Services 2019	Projected Services 2020
Resident	22,179	22,270	22,362	22,454	22,546	22,639	22,733	22,826	22,920	23,015
Multi- Residential	1,801	1,801	1,801	1,801	1,801	1,801	1,801	1,801	1,801	1,801
Commercial	1,868	1,868	1,868	1,868	1,868	1,868	1,868	1,868	1,868	1,868
Industrial	26	26	26	26	27	27	27	27	27	27
Government	376	381	386	391	396	401	406	411	416	421
Recycled	20	20	20	20	20	21	21	21	21	21
Other	10	10	10	10	10	10	10	10	10	10
Total	26,280	26,377	26,473	26,571	26,668	26,766	26,865	26,964	27,063	27,163

California Water Service Company - Hermosa Redondo District
Water Supply and Demand Analysis and Projections

Worksheet 13

2020's Projections

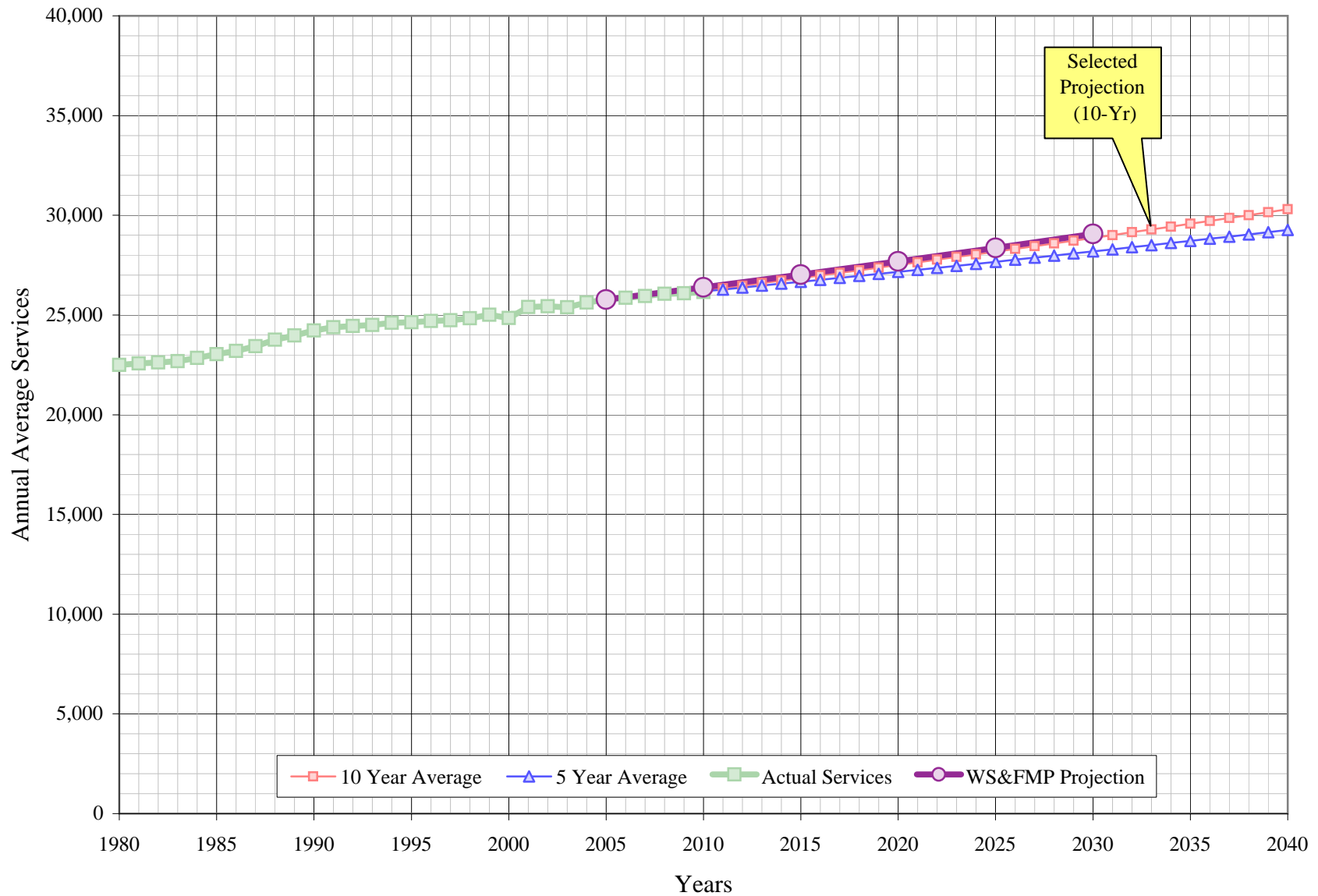
Scenario #4: Based on Maintaining Growth at the 10-Year Average Annual Growth
 5-Year

Customer Type	Projected Services 2021	Projected Services 2022	Projected Services 2023	Projected Services 2024	Projected Services 2025	Projected Services 2026	Projected Services 2027	Projected Services 2028	Projected Services 2029	Projected Services 2030
Resident	23,110	23,205	23,300	23,396	23,493	23,590	23,687	23,784	23,882	23,981
Multi- Residential	1,801	1,801	1,801	1,801	1,801	1,801	1,801	1,801	1,801	1,801
Commercial	1,868	1,868	1,868	1,868	1,868	1,868	1,868	1,868	1,868	1,868
Industrial	27	27	27	27	28	28	28	28	28	28
Government	426	432	437	443	448	454	460	465	471	477
Recycled	21	21	21	21	21	21	21	21	21	22
Other	10	10	11	11	11	11	11	11	11	11
Total	27,263	27,364	27,465	27,567	27,669	27,772	27,875	27,979	28,083	28,187

2030's Projections

Customer Type	Projected Services 2031	Projected Services 2032	Projected Services 2033	Projected Services 2034	Projected Services 2035	Projected Services 2036	Projected Services 2037	Projected Services 2038	Projected Services 2039	Projected Services 2040
Resident	24,079	24,179	24,278	24,378	24,479	24,580	24,681	24,783	24,885	24,987
Multi- Residential	1,801	1,801	1,801	1,801	1,801	1,801	1,801	1,801	1,801	1,801
Commercial	1,868	1,868	1,868	1,868	1,868	1,868	1,868	1,868	1,868	1,868
Industrial	28	28	28	28	29	29	29	29	29	29
Government	483	489	495	502	508	514	521	527	534	541
Recycled	22	22	22	22	22	22	22	22	22	22
Other	11	11	11	11	11	11	11	11	11	11
Total	28,292	28,398	28,504	28,610	28,717	28,825	28,933	29,041	29,150	29,259

Hermosa-Redondo District Historical & Projected Services

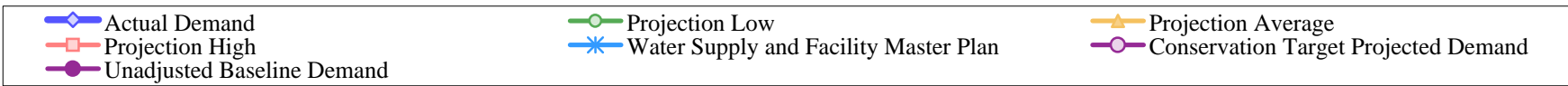
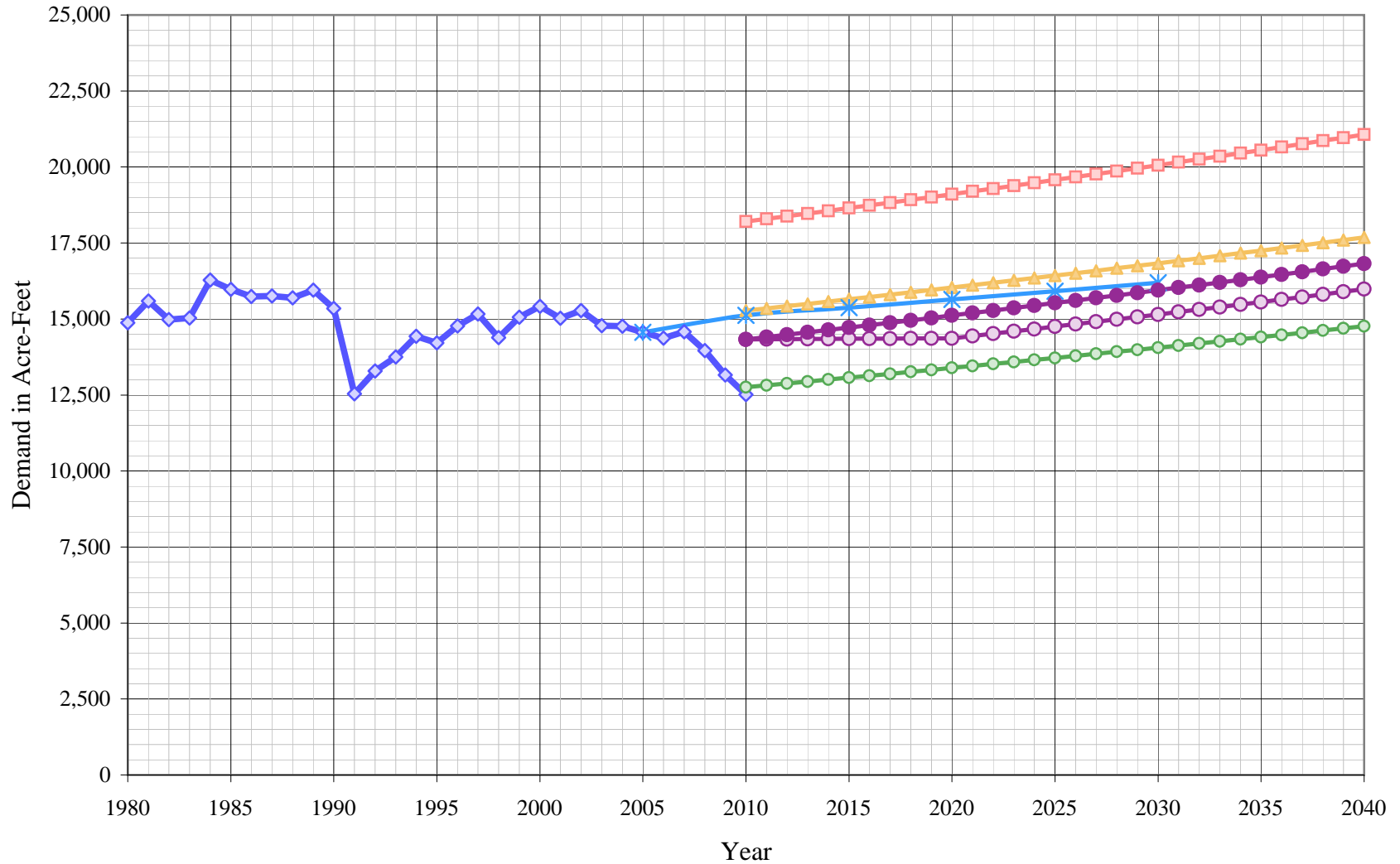


California Water Service Company - Hermosa Redondo District
Water Supply and Demand Analysis and Projections
Projected Annual Average Services

Year	Actual Services	Projected Services	
		10 Year Average	5 Year Average
1980	22,497		
1981	22,574		
1982	22,621		
1983	22,687		
1984	22,852		
1985	23,032		
1986	23,197		
1987	23,431		
1988	23,763		
1989	23,971		
1990	24,219		
1991	24,389		
1992	24,451		
1993	24,496		
1994	24,605		
1995	24,630		
1996	24,692		
1997	24,737		
1998	24,834		
1999	25,012		
2000	24,845		
2001	25,396		
2002	25,441		
2003	25,386		
2004	25,626		
2005	25,774		
2006	25,860		
2007	25,947		
2008	26,065		
2009	26,089		
2010	26,150	26,215	26,184

Year	Actual Services	Projected Services	
		10 Year Average	5 Year Average
2011		26,341	26,280
2012		26,468	26,377
2013		26,596	26,473
2014		26,724	26,571
2015		26,853	26,668
2016		26,983	26,766
2017		27,113	26,865
2018		27,244	26,964
2019		27,376	27,063
2020		27,508	27,163
2021		27,641	27,263
2022		27,775	27,364
2023		27,909	27,465
2024		28,044	27,567
2025		28,179	27,669
2026		28,316	27,772
2027		28,453	27,875
2028		28,590	27,979
2029		28,729	28,083
2030		28,868	28,187
2031		29,007	28,292
2032		29,148	28,398
2033		29,289	28,504
2034		29,431	28,610
2035		29,574	28,717
2036		29,717	28,825
2037		29,861	28,933
2038		30,006	29,041
2039		30,151	29,150
2040		30,297	29,259

Hermosa-Redondo District Historical & Projected Demand



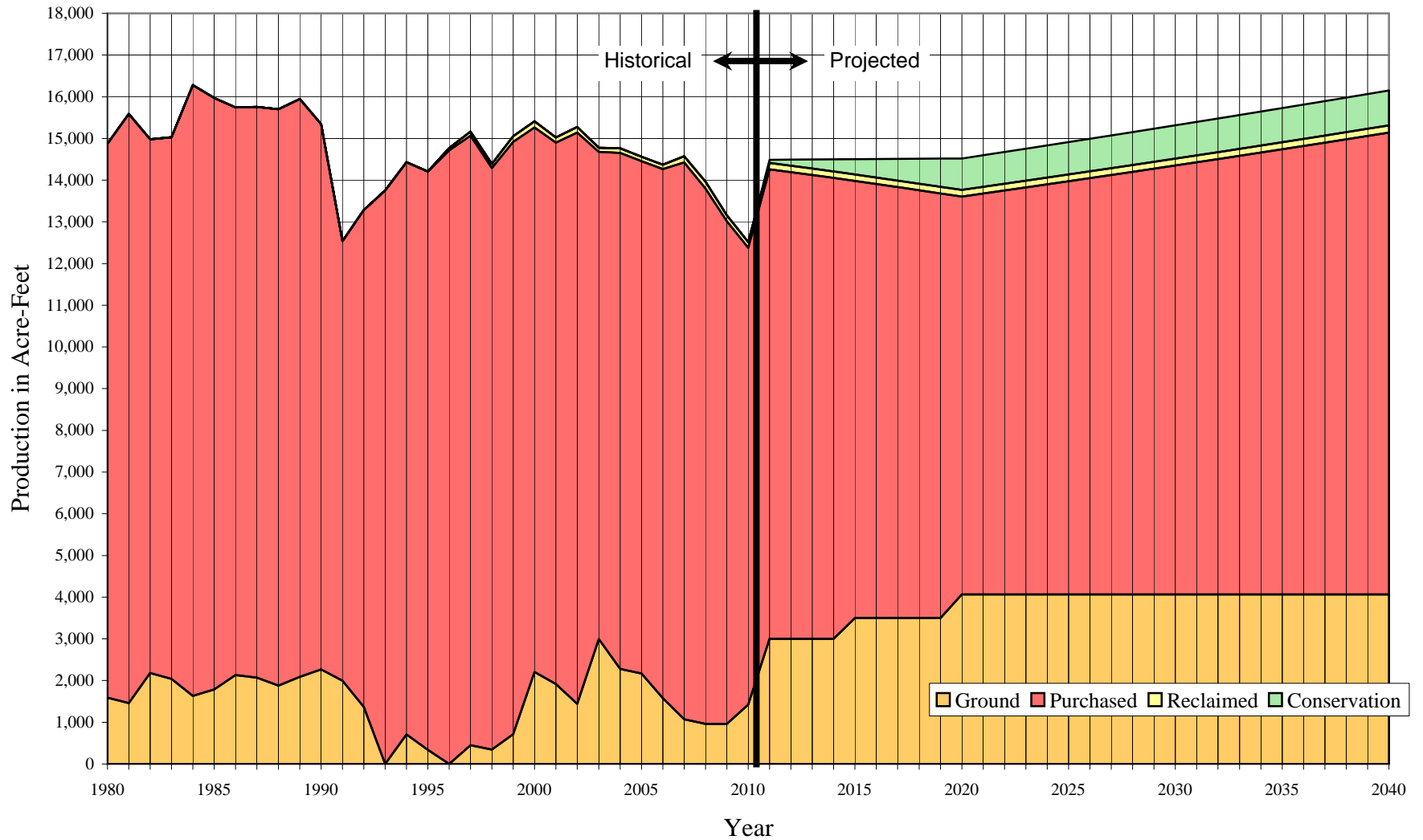
California Water Service Company - Hermosa Redondo District
Water Supply and Demand Analysis and Projections
Projected Demand in Acre-Feet

Water	Actual Demand	Projection			Unadjusted Baseline Demand	Target Demand	WS&FMP
		Low	Average	High			
1980	14,878						
1981	15,590						
1982	14,982						
1983	15,029						
1984	16,279						
1985	15,971						
1986	15,742						
1987	15,754						
1988	15,700						
1989	15,949						
1990	15,345						
1991	12,542						
1992	13,287						
1993	13,752						
1994	14,433						
1995	14,211						
1996	14,772						
1997	15,164						
1998	14,391						
1999	15,056						
2000	15,413						
2001	15,026						
2002	15,275						
2003	14,779						
2004	14,763						
2005	14,563					14,564	
2006	14,373						
2007	14,576						
2008	13,964						
2009	13,158						
2010	12,516	12,758	15,276	18,204	14,329	14,329	15,117

Water	Actual Demand	Projection			Unadjusted Baseline Demand	Target Demand	WS&FMP
		Low	Average	High			
2011		12,820	15,350	18,292	14,406	14,334	
2012		12,882	15,424	18,380	14,483	14,339	
2013		12,944	15,499	18,469	14,561	14,342	
2014		13,007	15,574	18,558	14,639	14,347	
2015		13,070	15,649	18,648	14,718	14,350	15,375
2016		13,133	15,725	18,738	14,797	14,353	
2017		13,197	15,801	18,829	14,876	14,355	
2018		13,261	15,878	18,920	14,956	14,358	
2019		13,326	15,955	19,012	15,036	14,360	
2020		13,390	16,033	19,104	15,116	14,361	15,640
2021		13,456	16,111	19,197	15,198	14,438	
2022		13,521	16,189	19,291	15,280	14,516	
2023		13,587	16,268	19,385	15,362	14,594	
2024		13,653	16,348	19,479	15,443	14,671	
2025		13,720	16,427	19,575	15,527	14,750	15,913
2026		13,787	16,508	19,670	15,610	14,829	
2027		13,854	16,588	19,766	15,693	14,908	
2028		13,922	16,670	19,863	15,778	14,989	
2029		13,990	16,751	19,961	15,862	15,069	
2030		14,059	16,833	20,059	15,947	15,150	16,194
2031		14,128	16,916	20,157	16,032	15,230	
2032		14,197	16,999	20,256	16,118	15,312	
2033		14,266	17,083	20,356	16,204	15,394	
2034		14,336	17,167	20,456	16,290	15,476	
2035		14,407	17,251	20,557	16,378	15,559	
2036		14,478	17,336	20,659	16,466	15,642	
2037		14,549	17,422	20,761	16,553	15,726	
2038		14,621	17,508	20,863	16,642	15,810	
2039		14,693	17,594	20,967	16,732	15,895	
2040		14,765	17,681	21,071	16,821	15,980	

Hermosa-Redondo District

Historical and Projected Distribution of Demand by Source

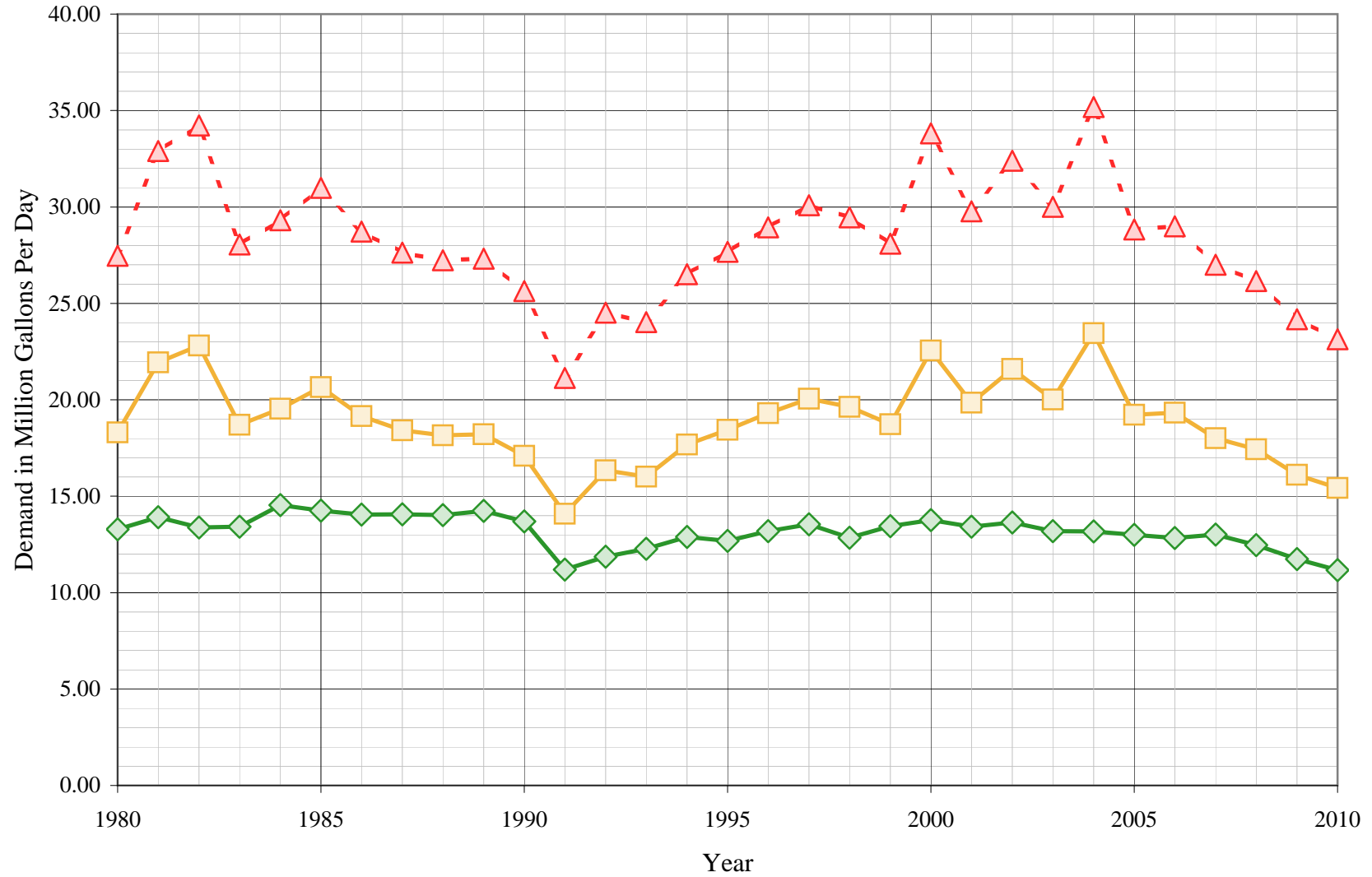


California Water Service Company - Hermosa Redondo District
Water Supply and Demand Analysis and Projections
Historical and Projected Distribution of Demand by Source

Year	Purchased Water		Reclaimed Water		Ground Water		Conservation		Total		Year	Purchased Water		Reclaimed Water		Ground Water		Conservation		Total		
	(kGal)	(AF)	(kGal)	(AF)	(kGal)	(AF)	(kGal)	(AF)	(kGal)	(AF)		(kGal)	(AF)	(kGal)	(AF)	(kGal)	(AF)	(kGal)	(AF)	(kGal)	(AF)	
1980	4,330,689	13,290	0	0	517,191	1,587			4,847,880	14,878												
1981	4,604,921	14,132	0	0	475,121	1,458			5,080,042	15,590	2011	3,669,828	11,262	49,778	153	977,571	3,000	23,472	72.0	4,647,399	14,487	
1982	4,171,121	12,801	0	0	710,695	2,181			4,881,816	14,982	2012	3,647,559	11,194	49,990	153	977,571	3,000	47,195	144.8	4,625,130	14,492	
1983	4,232,618	12,989	0	0	664,564	2,040			4,897,182	15,029	2013	3,624,787	11,124	50,202	154	977,571	3,000	71,170	218.4	4,602,358	14,496	
1984	4,772,553	14,646	0	0	531,813	1,632			5,304,366	16,279	2014	3,601,976	11,054	50,415	155	977,571	3,000	95,407	292.8	4,579,548	14,501	
1985	4,622,056	14,185	0	0	582,280	1,787			5,204,336	15,971	2015	3,415,724	10,482	50,630	155	1,140,500	3,500	119,901	368.0	4,556,224	14,506	
1986	4,435,120	13,611	0	0	694,277	2,131			5,129,397	15,742	2016	3,391,886	10,409	50,845	156	1,140,500	3,500	144,651	443.9	4,532,386	14,509	
1987	4,458,212	13,682	0	0	675,218	2,072			5,133,430	15,754	2017	3,367,536	10,334	51,061	157	1,140,500	3,500	169,657	520.6	4,508,036	14,512	
1988	4,503,278	13,820	0	0	612,668	1,880			5,115,946	15,700	2018	3,343,118	10,259	51,278	157	1,140,500	3,500	194,940	598.2	4,483,617	14,515	
1989	4,515,414	13,857	0	0	681,486	2,091			5,196,900	15,949	2019	3,318,176	10,183	51,496	158	1,140,500	3,500	220,484	676.6	4,458,676	14,518	
1990	4,260,486	13,075	0	0	739,829	2,270			5,000,315	15,345	2020	3,106,974	9,535	51,715	159	1,326,238	4,070	246,290	755.8	4,433,212	14,519	
1991	3,437,214	10,548	0	0	649,684	1,994			4,086,898	12,542	2021	3,130,942	9,608	51,934	159	1,326,238	4,070	247,621	759.9	4,457,180	14,598	
1992	3,884,465	11,921	0	0	445,074	1,366			4,329,539	13,287	2022	3,154,910	9,682	52,155	160	1,326,238	4,070	248,953	764.0	4,481,148	14,676	
1993	4,480,437	13,750	0	0	523	2			4,480,960	13,752	2023	3,178,878	9,755	52,377	161	1,326,238	4,070	250,284	768.1	4,505,116	14,754	
1994	4,471,308	13,722	0	0	231,584	711			4,702,892	14,433	2024	3,202,846	9,829	52,599	161	1,326,238	4,070	251,616	772.2	4,529,084	14,833	
1995	4,516,324	13,860	3,104	10	111,326	342			4,630,754	14,211	2025	3,227,249	9,904	52,823	162	1,326,238	4,070	252,972	776.3	4,553,488	14,912	
1996	4,794,056	14,712	18,445	57	898	3			4,813,399	14,772	2026	3,251,653	9,979	53,047	163	1,326,238	4,070	254,327	780.5	4,577,892	14,992	
1997	4,764,546	14,622	31,104	96	145,584	447			4,941,234	15,164	2027	3,276,057	10,054	53,273	163	1,326,238	4,070	255,683	784.6	4,602,295	15,072	
1998	4,543,361	13,943	33,545	103	112,391	345			4,689,297	14,391	2028	3,300,897	10,130	53,499	164	1,326,238	4,070	257,063	788.9	4,627,135	15,153	
1999	4,626,627	14,199	45,525	140	233,782	717			4,905,934	15,056	2029	3,325,736	10,206	53,727	165	1,326,238	4,070	258,443	793.1	4,651,975	15,234	
2000	4,255,665	13,060	47,981	147	718,756	2,206			5,022,402	15,413	2030	3,350,576	10,282	53,955	166	1,326,238	4,070	259,823	797.4	4,676,814	15,315	
2001	4,231,512	12,986	40,177	123	624,423	1,916			4,896,112	15,026	2031	3,375,415	10,359	54,184	166	1,326,238	4,070	261,203	801.6	4,701,654	15,396	
2002	4,463,398	13,698	44,573	137	469,373	1,441			4,977,344	15,275	2032	3,400,691	10,436	54,415	167	1,326,238	4,070	262,607	805.9	4,726,929	15,479	
2003	3,806,578	11,682	32,742	101	976,507	2,997			4,815,827	14,779	2033	3,425,966	10,514	54,646	168	1,326,238	4,070	264,011	810.2	4,752,204	15,562	
2004	4,031,243	12,371	36,321	112	742,873	2,280			4,810,437	14,763	2034	3,451,241	10,591	54,878	168	1,326,238	4,070	265,416	814.5	4,777,480	15,644	
2005	4,003,987	12,288	34,298	105	707,082	2,170			4,745,367	14,563	2035	3,476,953	10,670	55,111	169	1,326,238	4,070	266,844	818.9	4,803,191	15,728	
2006	4,134,542	12,688	34,265	105	514,521	1,579			4,683,328	14,373	2036	3,502,664	10,749	55,346	170	1,326,238	4,070	268,272	823.3	4,828,902	15,812	
2007	4,352,082	13,356	48,162	148	349,488	1,073			4,749,732	14,576	2037	3,528,375	10,828	55,581	171	1,326,238	4,070	269,701	827.7	4,854,613	15,896	
2008	4,183,621	12,839	53,497	164	313,175	961			4,550,293	13,964	2038	3,554,522	10,908	55,817	171	1,326,238	4,070	271,153	832.1	4,880,760	15,982	
2009	3,927,941	12,054	46,241	142	313,307	962			4,287,489	13,158	2039	3,580,669	10,988	56,054	172	1,326,238	4,070	272,606	836.6	4,906,907	16,067	
2010	3,570,692	10,958	43,761	134	463,901	1,424			4,078,354	12,516	2040	3,606,816	11,069	56,293	173	1,326,238	4,070	274,059	841.0	4,933,054	16,152	

Hermosa-Redondo District

Average Day, Maximum Day, & Peak Demand



◆ Average Day Demand
 ■ Maximum Day Demand
 ▲ Estimated Peak Hour Demand

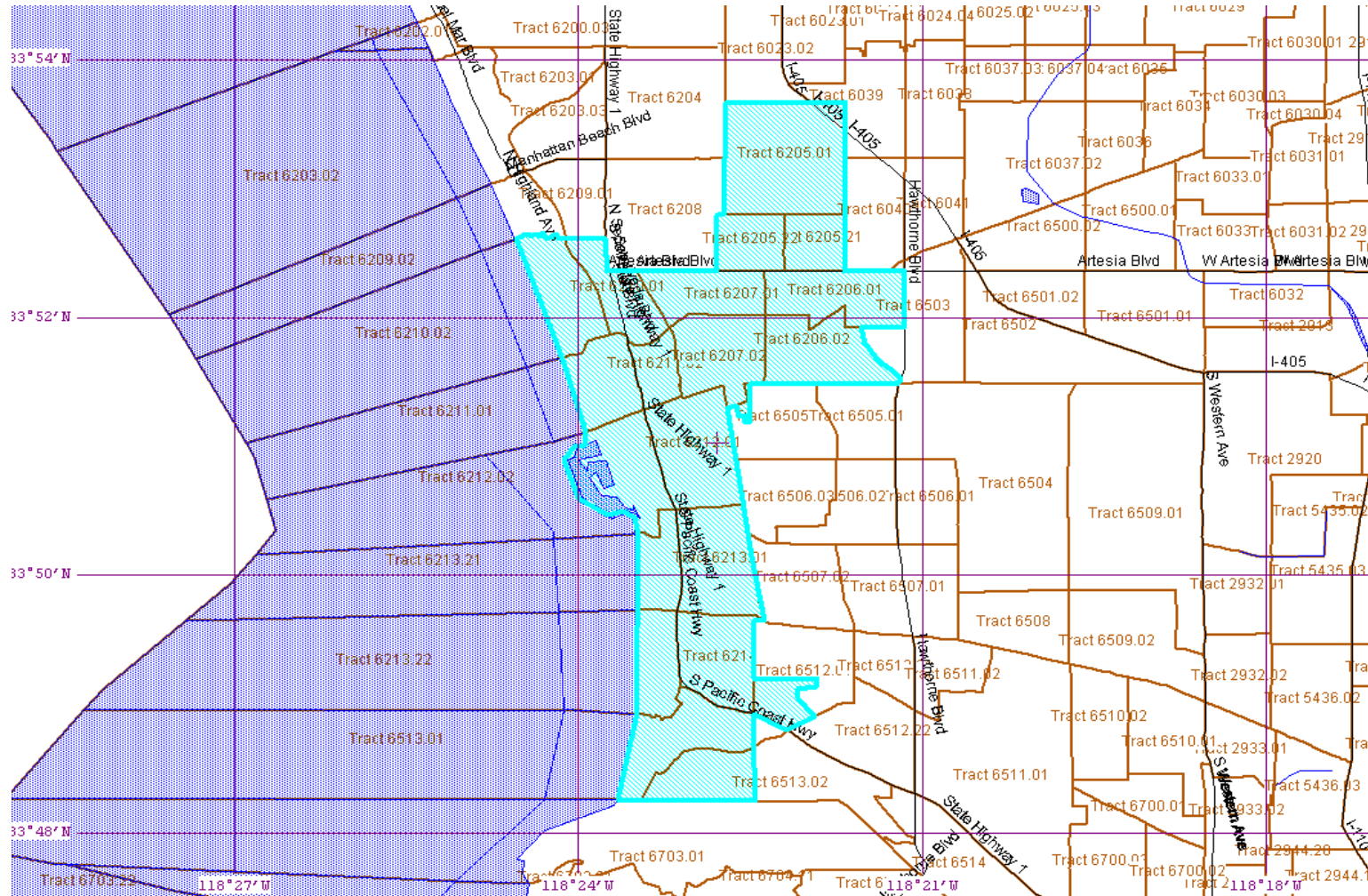
California Water Service Company - Hermosa Redondo District
Water Supply and Demand Analysis and Projections
Historical and Projected Average Day, Maximum Day, and Peak Demand

Year	Historical Annual Demand		Average Day Demand		Maximum Day Demand		MDD ADD Ratio	Estimated Peak Hour Demand		PHD MDD Ratio	PHD ADD Ratio	Measured Peak Hour Demand		PHD MDD Ratio
	(AFY)	(MGY)	(MGD)	Per Service (GPD)	(MGD)	Per Service (GPD)		(MGD)	(GPM)			(MGD)	(GPM)	
1980	14,878	4,848	13.28	590	18.31	814	1.38	27.47	19,074	1.50	2.07			
1981	15,590	5,080	13.92	617	21.94	972	1.58	32.90	22,849	1.50	2.36			
1982	14,982	4,882	13.37	591	22.82	1,009	1.71	34.22	23,767	1.50	2.56			
1983	15,029	4,897	13.42	591	18.71	824	1.39	28.06	19,484	1.50	2.09			
1984	16,279	5,304	14.53	636	19.54	855	1.34	29.31	20,352	1.50	2.02			
1985	15,971	5,204	14.26	619	20.66	897	1.45	30.99	21,522	1.50	2.17			
1986	15,742	5,129	14.05	606	19.15	826	1.36	28.73	19,948	1.50	2.04			
1987	15,754	5,133	14.06	600	18.42	786	1.31	27.63	19,190	1.50	1.96			
1988	15,700	5,116	14.02	590	18.16	764	1.30	27.24	18,917	1.50	1.94			
1989	15,949	5,197	14.24	594	18.21	760	1.28	27.32	18,969	1.50	1.92			
1990	15,345	5,000	13.70	566	17.10	706	1.25	25.64	17,807	1.50	1.87			
1991	12,542	4,087	11.20	459	14.09	578	1.26	21.14	14,677	1.50	1.89			
1992	13,287	4,330	11.86	485	16.35	668	1.38	24.52	17,026	1.50	2.07			
1993	13,752	4,481	12.28	501	16.01	654	1.30	24.02	16,681	1.50	1.96			
1994	14,433	4,703	12.88	524	17.67	718	1.37	26.51	18,410	1.50	2.06			
1995	14,211	4,631	12.69	515	18.45	749	1.45	27.68	19,219	1.50	2.18			
1996	14,772	4,813	13.19	534	19.30	782	1.46	28.95	20,102	1.50	2.20			
1997	15,164	4,941	13.54	547	20.06	811	1.48	30.09	20,894	1.50	2.22			
1998	14,391	4,689	12.85	517	19.64	791	1.53	29.45	20,454	1.50	2.29			
1999	15,056	4,906	13.44	537	18.73	749	1.39	28.09	19,508	1.50	2.09			
2000	15,413	5,022	13.76	554	22.55	908	1.64	33.82	23,488	1.50	2.46			
2001	15,026	4,896	13.41	528	19.85	782	1.48	29.78	20,681	1.50	2.22			
2002	15,275	4,977	13.64	536	21.59	849	1.58	32.39	22,494	1.50	2.38			
2003	14,779	4,816	13.19	520	20.01	788	1.52	30.01	20,841	1.50	2.27			
2004	14,763	4,810	13.18	514	23.45	915	1.78	35.18	24,429	1.50	2.67			
2005	14,563	4,745	13.00	504	19.22	746	1.48	28.83	20,024	1.50	2.22			
2006	14,373	4,683	12.83	496	19.33	747	1.51	28.99	20,133	1.50	2.26			
2007	14,576	4,750	13.01	502	18.00	694	1.38	27.01	18,754	1.50	2.08			
2008	13,964	4,550	12.47	478	17.44	669	1.40	26.15	18,163	1.50	2.10			
2009	13,158	4,287	11.75	450	16.11	618	1.37	24.17	16,785	1.50	2.06			
2010	12,516	4,078	11.17	427	15.42	590	1.38	23.13	16,066	1.50	2.07			
5 year Average (2006-2010)			12.25	471	17.26	664	1.41	25.89	17,980	1.50	2.11			
10 year Average (2001-2010)			12.77	496	19.04	740	1.49	28.57	19,837	1.50	2.23			
20 year Average (1991-2010)			12.77	507	18.66	740	1.46	28.00	19,441	1.50	2.19			

California Water Service Company - Hermosa-Redondo District

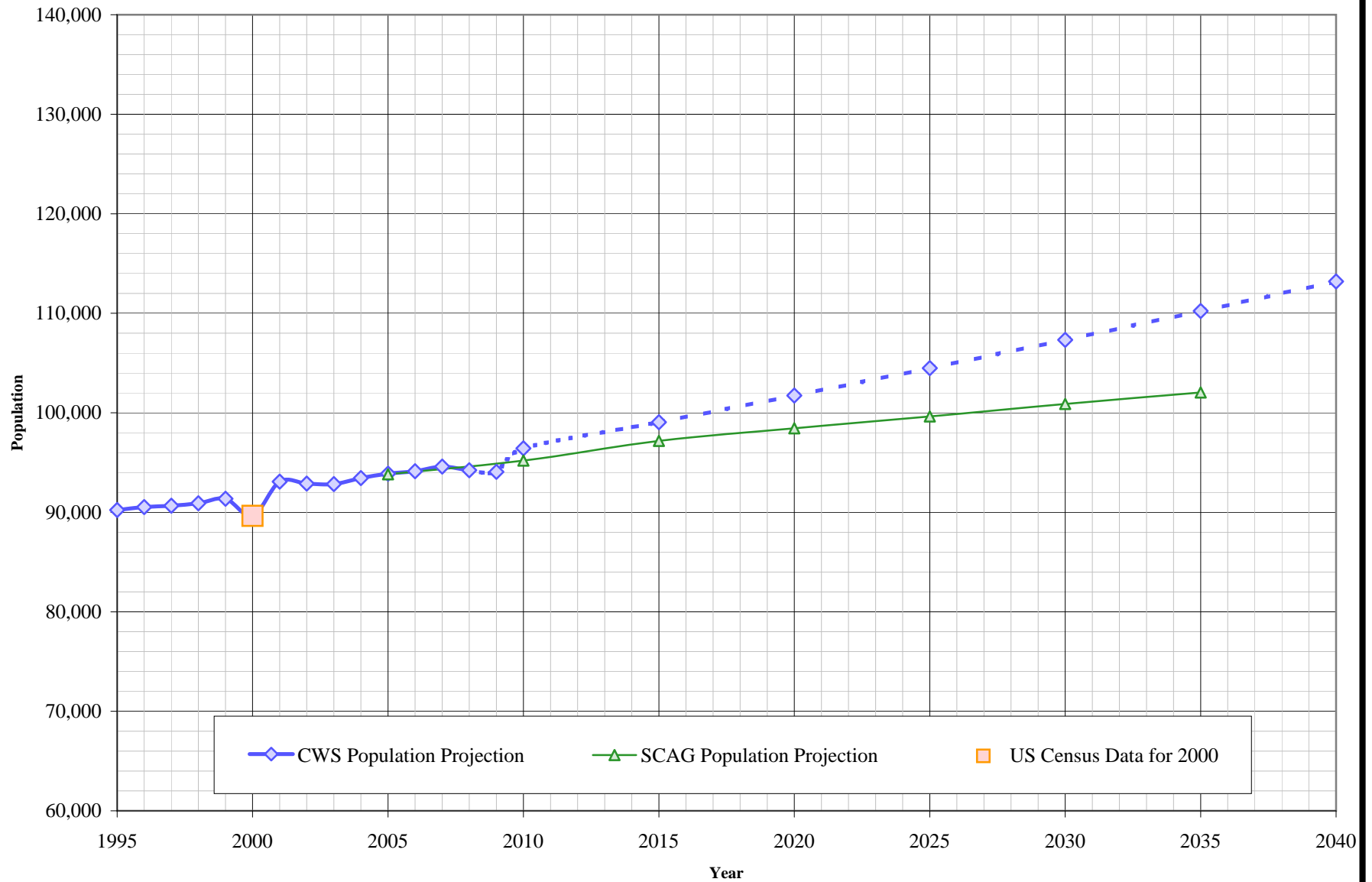
Water Supply and Demand Analysis and Projections

US Census 2000 Tract Map Summary



Census Tract Blocks	Population	Housing Units
1,003	89,637	43,084

Hermosa-Redondo District Population Projections



California Water Service Company - Hermosa-Redondo District
Water Supply and Demand Analysis and Projections

Population as of the 2000 Average Annual Services
 Estimated District Population based on 2000 U.S. Census Data & Annual Service Count

District Hermosa-Redondo
 Communities Hermosa Beach Redondo Beach Torrance (Portion of)

Year	Single Family Residential Services (DU)	Multi Family Residential			Total Residential Dwelling Units	Estimated District Population
		Services	Residential Units (DU)	Unit Density		
1995	20,540	1,459	15,458	10.59	35,998	90,230
1996	20,601	1,458	15,516	10.64	36,117	90,530
1997	20,666	1,458	15,503	10.63	36,169	90,660
1998	20,780	1,457	15,487	10.63	36,267	90,910
1999	20,976	1,457	15,471	10.62	36,447	91,360
2000	20,867	1,439	14,893	10.35	35,760	89,637
2001	21,292	1,469	15,842	10.78	37,134	93,080
2002	21,341	1,469	15,718	10.70 ⁽¹⁾	37,059	92,890
2003	21,298	1,468	15,737	10.72 ⁽¹⁾	37,035	92,830
2004	21,551	1,464	15,725	10.74 ⁽¹⁾	37,276	93,440
2005	21,699	1,464	15,755	10.76 ⁽¹⁾	37,454	93,880
2006	21,795	1,461	15,753	10.78	37,548	94,120
2007	21,917	1,455	15,817	10.87	37,734	94,590
2008	21,980	1,644	15,607	9.49	37,587	94,220
2009	21,997	1,801	15,531	8.62	37,528	94,070
2010	22,103	1,809	16,366	9.05	38,469	96,430
2015	22,638	1,847	16,875	9.13	39,513	99,050
2020	23,187	1,887	17,399	9.22	40,585	101,730
2025	23,749	1,927	17,936	9.31	41,685	104,490
2030	24,324	1,969	18,490	9.39	42,814	107,320
2035	24,913	2,011	19,058	9.48	43,971	110,220
2040	25,517	2,054	19,642	9.56	45,160	113,200

US Census 2000		Calculated Persons per CWS DU	Calculated Persons per US Census Housing Unit
Population	Housing Units		

89,637	43,084	2.507	2.081
--------	--------	-------	-------

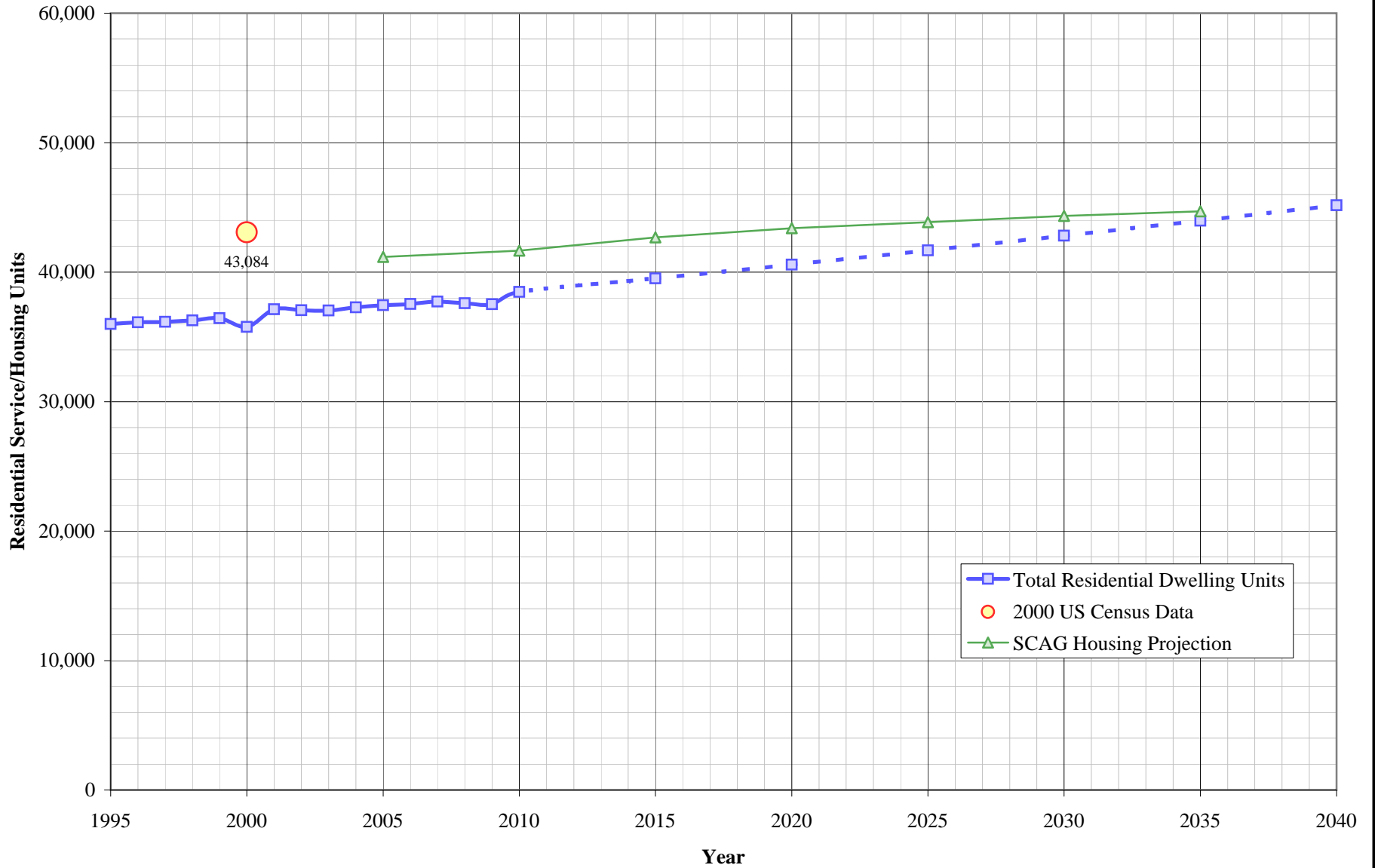
⁽¹⁾ Recorded Multifamily Units and Density for 2002 to 2006, shown below, we're found to be erroneous and not used in projections. Values shown to the left are estimated amounts.

	Residential Units (DU)	Unit Density
2002	17,035	11.60
2003	17,070	11.63
2004	17,062	11.65
2005	17,548	11.99
2006	17,770	12.16

Projected

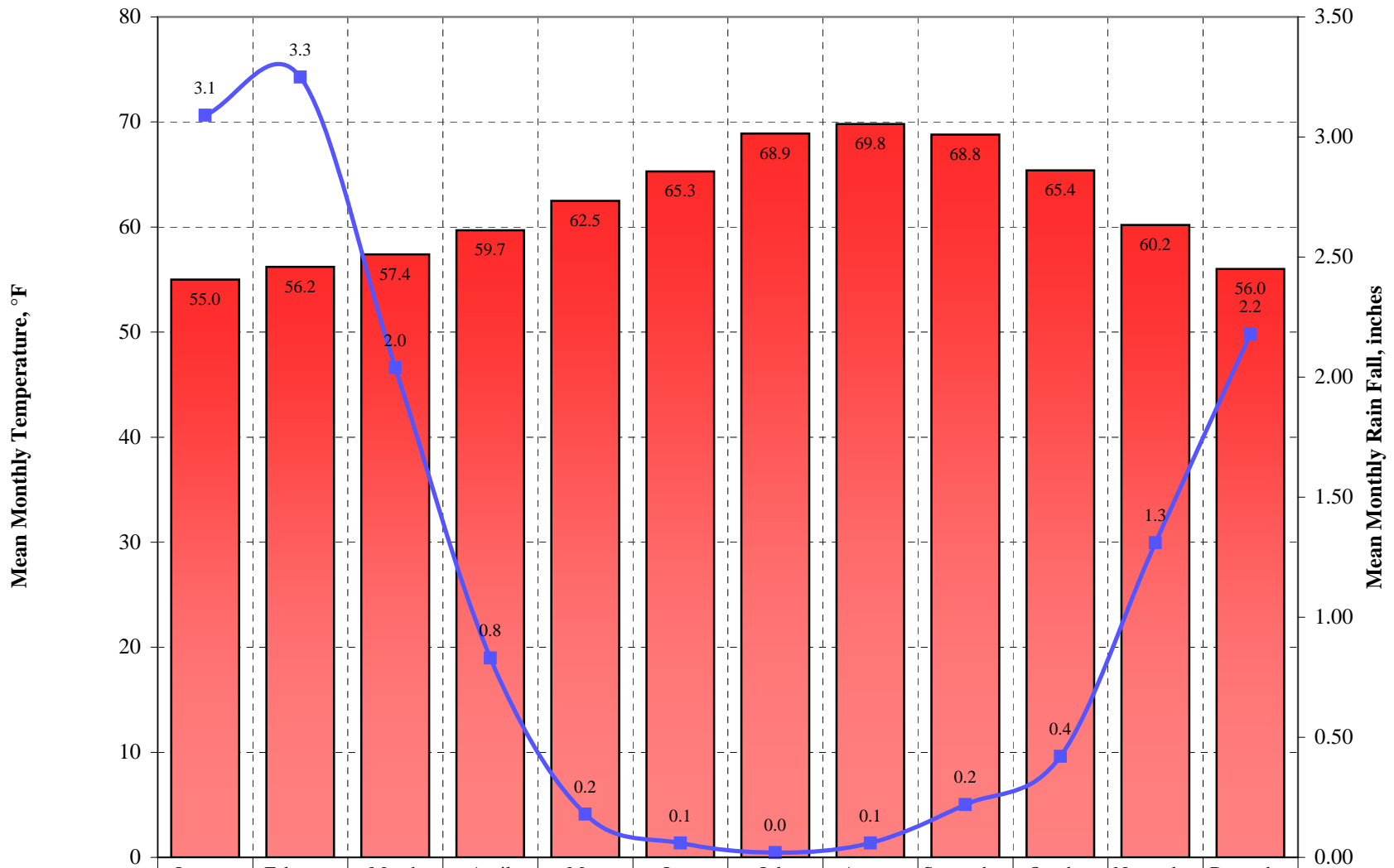
--	--	--

Hermosa-Redondo District Housing Projection



Hermosa-Redondo District

Mean Monthly Temperature and Rainfall

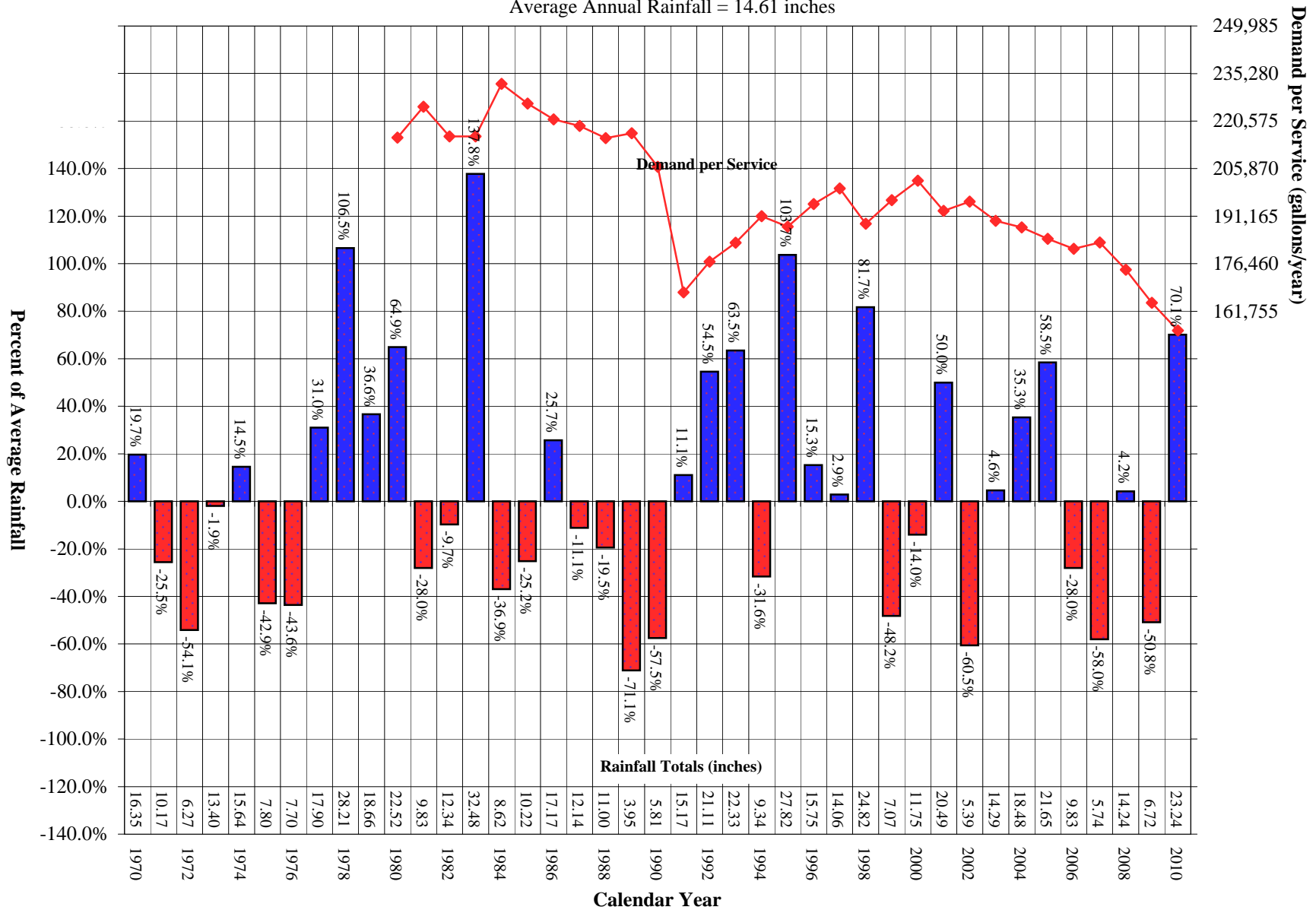


Temperature	55	56.2	57.4	59.7	62.5	65.3	68.9	69.8	68.8	65.4	60.2	56
Rainfall	3.09	3.25	2.04	0.83	0.18	0.06	0.02	0.06	0.22	0.42	1.31	2.18

Hermosa-Redondo District

Comparison of Annual Rainfall to Historic Average

Average Annual Rainfall = 14.61 inches



California Water Service Company - Hermosa - Redondo District
Water Supply and Demand Analysis and Projections

Worksheet 20

Temperature & Rainfall History

Year	Annual Average Temp.	Annual Average Rainfall	Rainfall Percent Variation	Demand per Service (Gal / Yr)	Percent of Average Demand	Year	Annual Average Temp.	Annual Average Rainfall	Rainfall Percent Variation	Demand per Service (Gal / Yr)	Percent of Average Demand
1970	61.8	16.35	19.7%			1995	62.5	27.82	103.7%	187,887	95.4%
1971	61.6	10.17	-25.5%			1996	63.3	15.75	15.3%	194,938	99.0%
1972	62.8	6.27	-54.1%			1997	64.5	14.06	2.9%	199,751	101.4%
1973	62.0	13.40	-1.9%			1998	62.2	24.82	81.7%	188,826	95.9%
1974	62.4	15.64	14.5%			1999	61.1	7.07	-48.2%	196,143	99.6%
1975	60.8	7.80	-42.9%			2000	62.6	11.75	-14.0%	202,149	102.6%
1976	63.9	7.70	-43.6%			2001	61.3	20.49	50.0%	192,791	97.9%
1977	63.4	17.90	31.0%			2002	61.6	5.39	-60.5%	195,643	99.3%
1978	63.3	28.21	106.5%			2003	62.9	14.29	4.6%	189,704	96.3%
1979	63.2	18.66	36.6%			2004	62.7	18.48	35.3%	187,717	95.3%
1980	63.8	22.52	64.9%	215,490	109.4%	2005	62.4	21.65	58.5%	184,114	93.5%
1981	64.8	9.83	-28.0%	225,040	114.2%	2006	61.9	9.83	-28.0%	181,103	91.9%
1982	62.1	12.34	-9.7%	215,809	109.6%	2007	60.2	5.74	-58.0%	183,055	92.9%
1983	64.3	32.48	137.8%	215,859	109.6%	2008	63.1	14.24	4.2%	174,575	88.6%
1984	65.0	8.62	-36.9%	232,118	117.8%	2009	62.6	6.72	-50.8%	164,341	83.4%
1985	63.1	10.22	-25.2%	225,961	114.7%	2010	61.4	23.24	70.1%	155,805	79.1%
1986	63.8	17.17	25.7%	221,123	112.3%	2011					
1987	62.9	12.14	-11.1%	219,087	111.2%	2012					
1988	63.8	11.00	-19.5%	215,290	109.3%	2013					
1989	63.4	3.95	-71.1%	216,799	110.1%	2014					
1990	63.7	5.81	-57.5%	206,462	104.8%	2015					
1991	62.1	15.17	11.1%	167,571	85.1%	2016					
1992	64.6	21.11	54.5%	177,070	89.9%	2017					
1993	63.5	22.33	63.5%	182,926	92.9%	2018					
1994	62.4	9.34	-31.6%	191,136	97.0%	2019					

Source: Western Regional Climate Center: <http://www.wrcc.dri.edu/cgi-bin/cliMAIN.pl?ca8973>

Calendar Year	Average Water Year	Normal Water Year	Single-Dry Water Year	Multiple-Dry Water Years			
				1	2	3	4
	-	2003	2002	2006	2007	2008	2009
Demand per Service (gal/yr)	196,977	189,704	195,643	181,103	183,055	174,575	164,341
Difference from Average	100.0%	100.0%	103.1%	95.5%	96.5%	92.0%	86.6%

California Water Service Company - Hermosa - Redondo District
Water Supply and Demand Analysis and Projections

Worksheet 20

Temperature Data

Station:(048973) TORRANCE															
From Year=1932 To Year=2010															
	Monthly Averages			Daily Extremes				Monthly Extremes				Max. Temp.		Min. Temp.	
	Max.	Min.	Mean	High	Date	Low	Date	Highest Mean	Year	Lowest Mean	Year	>= 90 F	<= 32 F	<= 32 F	<= 0 F
	F	F	F	F	dd/yyyy or yyyymmdd	F	dd/yyyy or yyyymmdd	F	-	F	-	# Days	# Days	# Days	# Days
January	65.8	44.2	55	91	31/2003	24	23/1937	61.9	2003	45.2	1932	0	0	0.9	0
February	66.5	45.8	56.2	92	23/1954	28	3/1932	61.3	1954	49.4	1956	0	0	0.2	0
March	67.4	47.3	57.4	96	26/1988	23	2/1935	63.1	1988	52.4	1939	0.1	0	0.1	0
April	69.6	49.8	59.7	104	6/1989	30	1/1936	65.8	1992	53.3	1967	0.5	0	0	0
May	71.6	53.4	62.5	100	13/1979	37	5/1933	67.9	1997	57.1	1933	0.4	0	0	0
June	73.8	56.7	65.3	104	16/1981	21	12/2007	72.2	1981	58.8	2007	0.4	0	0	0
July	77.6	60.2	68.9	102	1/1985	43	23/1965	73.8	2006	64.8	1944	0.5	0	0	0
August	78.6	61	69.8	101	6/1983	44	9/2007	75.2	1983	66	1942	0.9	0	0	0
September	78	59.5	68.8	111	1/1955	41	28/1934	77.4	1984	61.7	1933	1.8	0	0	0
October	75.4	55.4	65.4	106	15/1961	33	4/1945	70.5	1958	61.8	1938	1.7	0	0	0
November	71.5	48.9	60.2	98	4/1949	29	13/1938	65.8	1976	55.3	1994	0.6	0	0.1	0
December	67	45	56	94	3/1958	27	22/1990	60.1	1980	51.1	1932	0	0	0.4	0
Annual	71.9	52.3	62.1	111	19550901	21	20070612	65	1984	58.7	1933	6.9	0	1.6	0

Monthly Average ETo Report	Jan	Feb	Mar	Apr	May	Jun	Jul	Aug	Sep	Oct	Nov	Dec	Total
	1.86	2.24	3.41	4.50	5.27	5.70	5.89	5.58	4.50	3.41	2.40	1.86	46.6

1) California Irrigation Management Information System (CIMIS), <http://www.cimis.water.ca.gov/cimis/welcome.jsp>, EvapoTranspiration (Eto) Zones Map, Zone 4

California Water Service Company - Hermosa - Redondo District
Water Supply and Demand Analysis and Projections

Worksheet 20

Precipitation Data

Station:(048973) TORRANCE														
From Year=1932 To Year=2010														
Precipitation											Total Snowfall			
	Mean	High	Year	Low	Year	1 Day Max.		>=	>=	>=	>=	Mean	High	Year
	in.	in.	-	in.	-	in.	dd/yyyy or yyyymmdd	# Days	# Days	# Days	# Days	in.	in.	-
January	3.09	16.92	1995	0	1972	6.53	26/1956	6	5	2	1	0	1.2	1949
February	3.25	13.08	1998	0	1961	4.11	6/2010	6	4	2	1	0	0	1949
March	2.04	8.9	1983	0	1934	3.04	1/1983	5	3	1	1	0	0	1949
April	0.83	5.06	1965	0	1934	1.62	8/1935	3	2	1	0	0	0	1949
May	0.18	3.48	1977	0	1934	2.18	8/1977	1	0	0	0	0	0	1949
June	0.06	0.76	1999	0	1935	0.73	5/1933	0	0	0	0	0	0	1949
July	0.02	0.57	1997	0	1932	0.57	22/1997	0	0	0	0	0	0	1949
August	0.06	3.08	1977	0	1932	2.8	17/1977	0	0	0	0	0	0	1949
September	0.22	6.43	1939	0	1933	5.51	25/1939	1	0	0	0	0	0	1949
October	0.42	3.65	2004	0	1937	1.94	27/2000	2	1	0	0	0	0	1949
November	1.31	9.34	1965	0	1932	4.6	29/1970	3	2	1	0	0	0	1949
December	2.18	7.24	1971	0	1956	3.61	28/2004	6	4	1	1	0	0	1949
Annual	13.66	32.48	1983	3.41	1953	6.53	19560126	34	22	9	4	0	1.2	1949

California Water Service Company - Hermosa-Redondo District

Water Supply and Demand Analysis and Projections

Groundwater Facilities

Unit No.	Design Capacity		Status
	Active	Inactive	
008-01	850		Standby
022-01		900	
030-01		760	

Total units:	3	1	2	units
--------------	---	---	---	-------

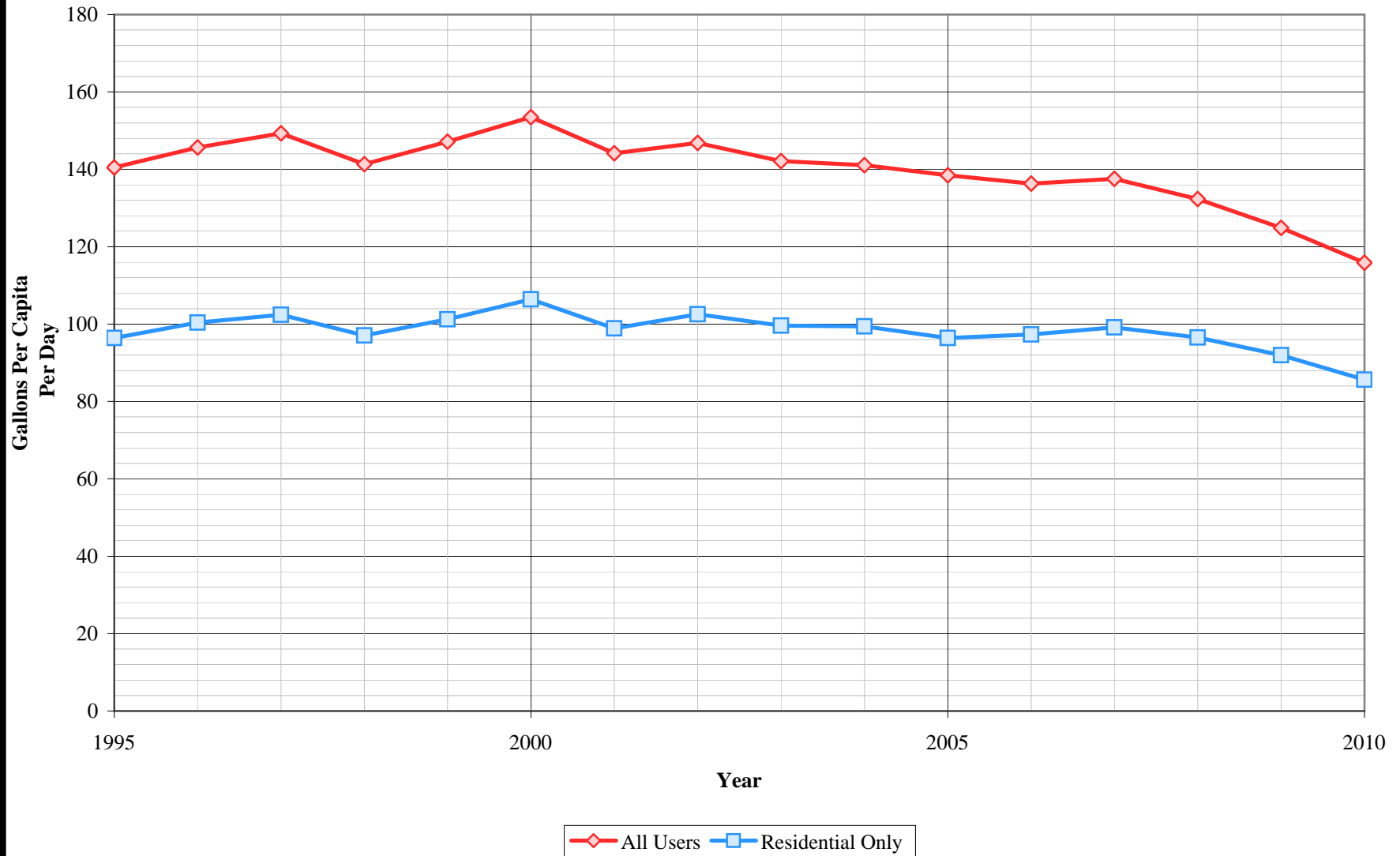
Total	2,510	850	1,660	GPM
	3.61	1.22	2.39	MGD
	4,049	1,371	2,678	AFY

Notes:

- 1) Listed pump capacities on this worksheet represent design flowrates, actual flowrates are highly dependent on local system pressures, well characteristics, and other design criteria
- 2) Values in bold are estimated

Updated 1/1/2011

Hermosa-Redondo District Per Capita Consumption



California Water Service Company - Hermosa-Redondo District
Water Supply and Demand Analysis and Projections

Per Capita Water Demand Calculation

Year	All Users				Residential Only		
	Usage (AFY)	Usage (MGY)	Gallons Per Capita Per Day	Adjusted Per Capita Demand (gpcd)	Usage (AFY)	Usage (MGY)	Gallons Per Capita Per Day
1995	14,202	4,628	141	140	9,741	3,174	96
1996	14,772	4,813	146	145	10,177	3,316	100
1997	15,164	4,941	149	148	10,400	3,389	102
1998	14,391	4,689	141	140	9,885	3,221	97
1999	15,056	4,906	147	145	10,358	3,375	101
2000	15,413	5,022	154	152	10,683	3,481	106
2001	15,026	4,896	144	143	10,308	3,359	99
2002	15,275	4,977	147	145	10,668	3,476	103
2003	14,779	4,816	142	140	10,360	3,376	100
2004	14,763	4,810	141	139	10,404	3,390	99
2005	14,563	4,745	138	137	10,140	3,304	96
2006	14,373	4,683	136	135	10,263	3,344	97
2007	14,576	4,750	138	136	10,502	3,422	99
2008	13,964	4,550	132	130	10,189	3,320	97
2009	13,158	4,287	125	123	9,690	3,157	92
2010	12,516	4,078	116	114	9,247	3,013	86
5 Yr. Avg.	13,717	4,470	129	128	9,978	3,251	94
10 Yr. Avg.	14,299	4,659	136	134	10,177	3,316	97

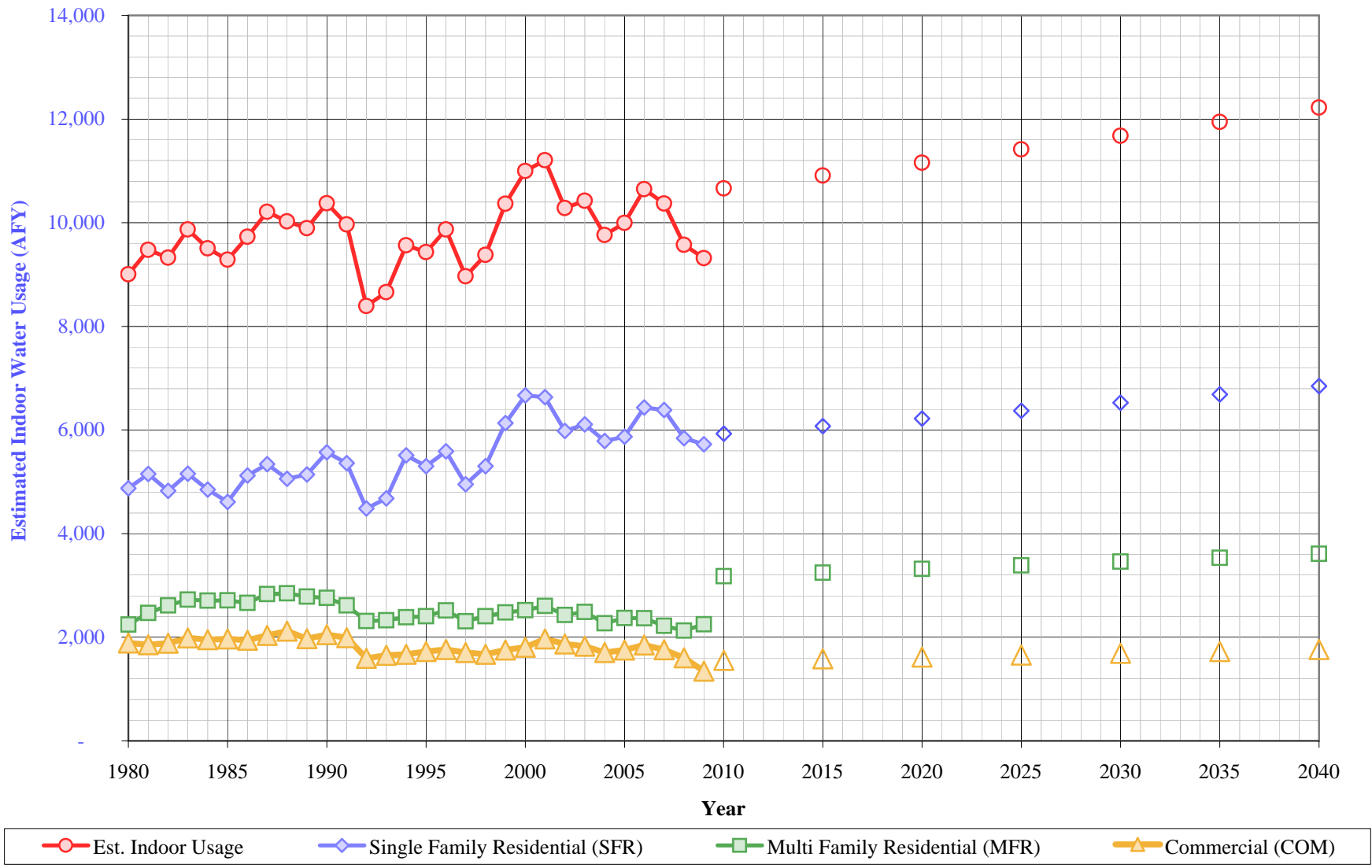
Five year average is from years 2006 through 2010

Ten year average is from years 2001 through 2010

Adjusted Per Capita Demand has recycled water removed.

Hermosa-Redondo District

Estimated Indoor Water Usage



California Water Service Company - Hermosa-Redondo District
Water Supply and Demand Analysis and Projections

Estimated Indoor/Outdoor Water Usage

Year	Single Family Residential (SFR)							Multi Family Residential (MFR)						Commercial (COM)				Est. Indoor Usage	
	Metered Single Family Residential Indoor Use (Annualized 90% of January Total)				Indoor Flat Rate Usage (AFY)	Total SFR Indoor Usage			Multi Family Residential January Usage		Multi Family Residential Indoor Use (Annualized 90% of January Total)				Commercial		Commercial Indoor Use (Annualized 90% of January Total)		
	JAN (CCF)	AFY	AFY/Service			AFY	GPD/Service	%	(CCF)	AFY	GPD/Service	%	(CCF)	AFY	GPD/Service	%			
1980	196,546	4,873	0.26	0	4,873	232	74%	90,482	2,243	1,690	86%	76,178	1,889	768	84%	9,005			
1981	207,826	5,153	0.27	0	5,153	245	75%	99,567	2,469	1,784	86%	74,886	1,857	753	82%	9,478			
1982	194,534	4,823	0.26	0	4,823	230	74%	105,426	2,614	1,846	88%	76,103	1,887	760	83%	9,324			
1983	208,049	5,158	0.27	0	5,158	245	82%	109,886	2,724	1,908	91%	80,107	1,986	795	88%	9,869			
1984	195,663	4,851	0.26	0	4,851	229	69%	109,097	2,705	1,868	86%	78,696	1,951	779	81%	9,507			
1985	185,953	4,610	0.24	0	4,610	216	67%	109,399	2,712	1,837	87%	79,293	1,966	784	83%	9,289			
1986	206,612	5,123	0.27	0	5,123	238	75%	107,349	2,662	1,763	86%	78,493	1,946	776	82%	9,730			
1987	215,359	5,339	0.28	0	5,339	246	76%	114,319	2,834	1,819	89%	82,079	2,035	804	81%	10,209			
1988	203,963	5,057	0.26	0	5,057	229	72%	114,827	2,847	1,789	91%	85,515	2,120	836	84%	10,024			
1989	207,314	5,140	0.26	0	5,140	231	70%	112,279	2,784	1,725	89%	79,554	1,972	778	80%	9,896			
1990	224,517	5,567	0.28	0	5,567	247	80%	111,278	2,759	1,693	91%	82,731	2,051	812	85%	10,377			
1991	216,119	5,358	0.26	0	5,358	236	95%	105,396	2,613	1,599	99%	80,453	1,995	794	97%	9,966			
1992	180,946	4,486	0.22	0	4,486	197	72%	93,222	2,311	1,413	86%	64,255	1,593	637	77%	8,391			
1993	188,710	4,679	0.23	0	4,679	205	70%	93,825	2,326	1,421	86%	66,665	1,653	664	80%	8,658			
1994	222,167	5,508	0.27	0	5,508	240	78%	96,220	2,386	1,459	87%	67,379	1,671	671	79%	9,564			
1995	213,815	5,301	0.26	0	5,301	230	76%	96,983	2,405	1,471	87%	69,659	1,727	698	82%	9,433			
1996	225,439	5,589	0.27	0	5,589	242	76%	101,505	2,517	1,541	89%	71,095	1,763	709	81%	9,869			
1997	199,723	4,952	0.24	0	4,952	214	65%	93,134	2,309	1,414	82%	68,827	1,706	691	78%	8,967			
1998	213,843	5,302	0.26	0	5,302	228	74%	96,940	2,403	1,473	87%	67,492	1,673	681	81%	9,379			
1999	247,435	6,135	0.29	0	6,135	261	81%	99,868	2,476	1,517	89%	70,709	1,753	717	83%	10,364			
2000	268,851	6,666	0.32	0	6,666	285	85%	101,766	2,523	1,565	90%	72,991	1,810	750	83%	10,999			
2001	267,545	6,633	0.31	0	6,633	278	88%	105,058	2,605	1,583	93%	79,364	1,968	791	88%	11,206			
2002	241,330	5,983	0.28	0	5,983	250	76%	98,057	2,431	1,477	86%	75,409	1,870	753	80%	10,284			
2003	246,441	6,110	0.29	0	6,110	256	80%	100,388	2,489	1,514	91%	73,624	1,825	738	84%	10,424			
2004	233,482	5,789	0.27	0	5,789	240	75%	91,439	2,267	1,382	84%	68,802	1,706	694	79%	9,762			
2005	236,822	5,872	0.27	0	5,872	242	78%	95,625	2,371	1,446	90%	70,664	1,752	714	83%	9,994			
2006	259,446	6,433	0.30	0	6,433	263	84%	95,473	2,367	1,446	91%	74,577	1,849	754	87%	10,649			
2007	257,590	6,387	0.29	0	6,387	260	81%	89,577	2,221	1,363	86%	71,023	1,761	719	83%	10,368			
2008	235,494	5,839	0.27	0	5,839	237	77%	85,930	2,130	1,157	81%	64,628	1,602	709	84%	9,572			
2009	230,801	5,722	0.26	0	5,722	232	80%	90,717	2,249	1,115	88%	54,199	1,344	642	81%	9,315			
2010	---	---	---	---	5,931	240	0.8	---	3,179	1,569	88%	---	1,553	739	83%	10,663			
2015	---	---	---	---	6,074	240	0.8	---	3,247	1,569	88%	---	1,586	739	83%	10,908			
2020	---	---	---	---	6,222	240	0.8	---	3,317	1,569	88%	---	1,620	739	83%	11,159			
2025	---	---	---	---	6,372	240	0.8	---	3,388	1,569	88%	---	1,655	739	83%	11,415			
2030	---	---	---	---	6,527	240	0.8	---	3,461	1,569	88%	---	1,690	739	83%	11,678			
2035	---	---	---	---	6,685	240	0.8	---	3,535	1,569	88%	---	1,727	739	83%	11,946			
2040	---	---	---	---	6,847	240	0.8	---	3,611	1,569	88%	---	1,764	739	83%	12,221			

California Water Service Company - Hermosa-Redondo District

Workhe

Water Supply and Demand Analysis and Projections

Comparison of Projected Demand and Conservation Savings Between SBx7-7 Compliance Targets and Actual Proposed Programs

Year	SBx7-7 Compliance Target (gpcd)	Anticipated GPCD with Proposed Programs*	Estimated Population	Undadjusted Baseline Demand (AFY)	SBx7-7 Compliance Target Demand (AFY)	Anticipated Demand with Proposed Programs (AFY)	Compliance Target Savings Requirement (AFY)	Savings Due to Proposed Programs (AFY)	Recycled Water Projection (AFY)
2005-2009 Average	133	133	94,176	13,994	13,994	13,994	0	0	-
2010	133	133	96,430	14,329	14,329	14,329	0	0	134
2011	132	127	96,950	14,406	14,334	13,792	72	614	153
2012	131	125	97,470	14,483	14,339	13,648	145	836	153
2013	131	124	97,990	14,561	14,342	13,611	218	950	154
2014	130	122	98,520	14,639	14,347	13,464	293	1,176	155
2015	129	120	99,050	14,718	14,350	13,314	368	1,404	155
2016	129	120	99,580	14,797	14,353	13,385	444	1,412	156
2017	128	120	100,110	14,876	14,355	13,457	521	1,419	157
2018	127	120	100,650	14,956	14,358	13,529	598	1,427	157
2019	127	120	101,190	15,036	14,360	13,602	677	1,434	158
2020	126	120	101,730	15,116	14,361	13,674	756	1,442	159
2021	126	120	102,280	15,198	14,438	13,748	760	1,450	159
2022	126	120	102,830	15,280	14,516	13,822	764	1,458	160
2023	126	120	103,380	15,362	14,594	13,896	768	1,466	161
2024	126	120	103,930	15,443	14,671	13,970	772	1,473	161
2025	126	120	104,490	15,527	14,750	14,045	776	1,481	162
2026	126	120	105,050	15,610	14,829	14,121	780	1,489	163
2027	126	120	105,610	15,693	14,908	14,196	785	1,497	163
2028	126	120	106,180	15,778	14,989	14,272	789	1,505	164
2029	126	120	106,750	15,862	15,069	14,349	793	1,513	165
2030	126	120	107,320	15,947	15,150	14,426	797	1,521	166
2031	126	120	107,890	16,032	15,230	14,502	802	1,529	166
2032	126	120	108,470	16,118	15,312	14,580	806	1,538	167
2033	126	120	109,050	16,204	15,394	14,658	810	1,546	168
2034	126	120	109,630	16,290	15,476	14,736	815	1,554	168
2035	126	120	110,220	16,378	15,559	14,815	819	1,563	169
2036	126	120	110,810	16,466	15,642	14,895	823	1,571	170
2037	126	120	111,400	16,553	15,726	14,974	828	1,579	171
2038	126	120	112,000	16,642	15,810	15,055	832	1,588	171
2039	126	120	112,600	16,732	15,895	15,135	837	1,596	172
2040	126	120	113,200	16,821	15,980	15,216	841	1,605	173

*Note: The district is projected to achieve its district-specific 2015 and 2020 SBx7-7 compliance target in 2015 through a combination of passive and active savings. For the purpose of this analysis it is assumed that GPCD will remain constant from 2015 through 2040.