

Water Resources Planning Department

Water Supply / Demand Analysis and Projections
for
South San Francisco District

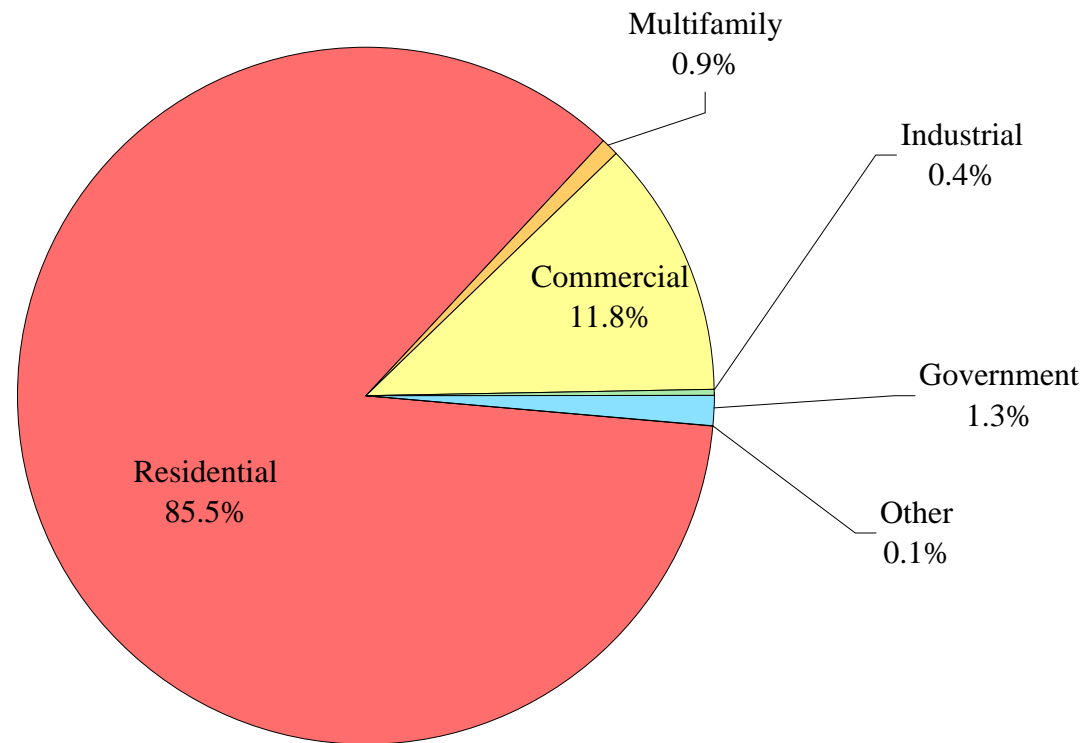
2010



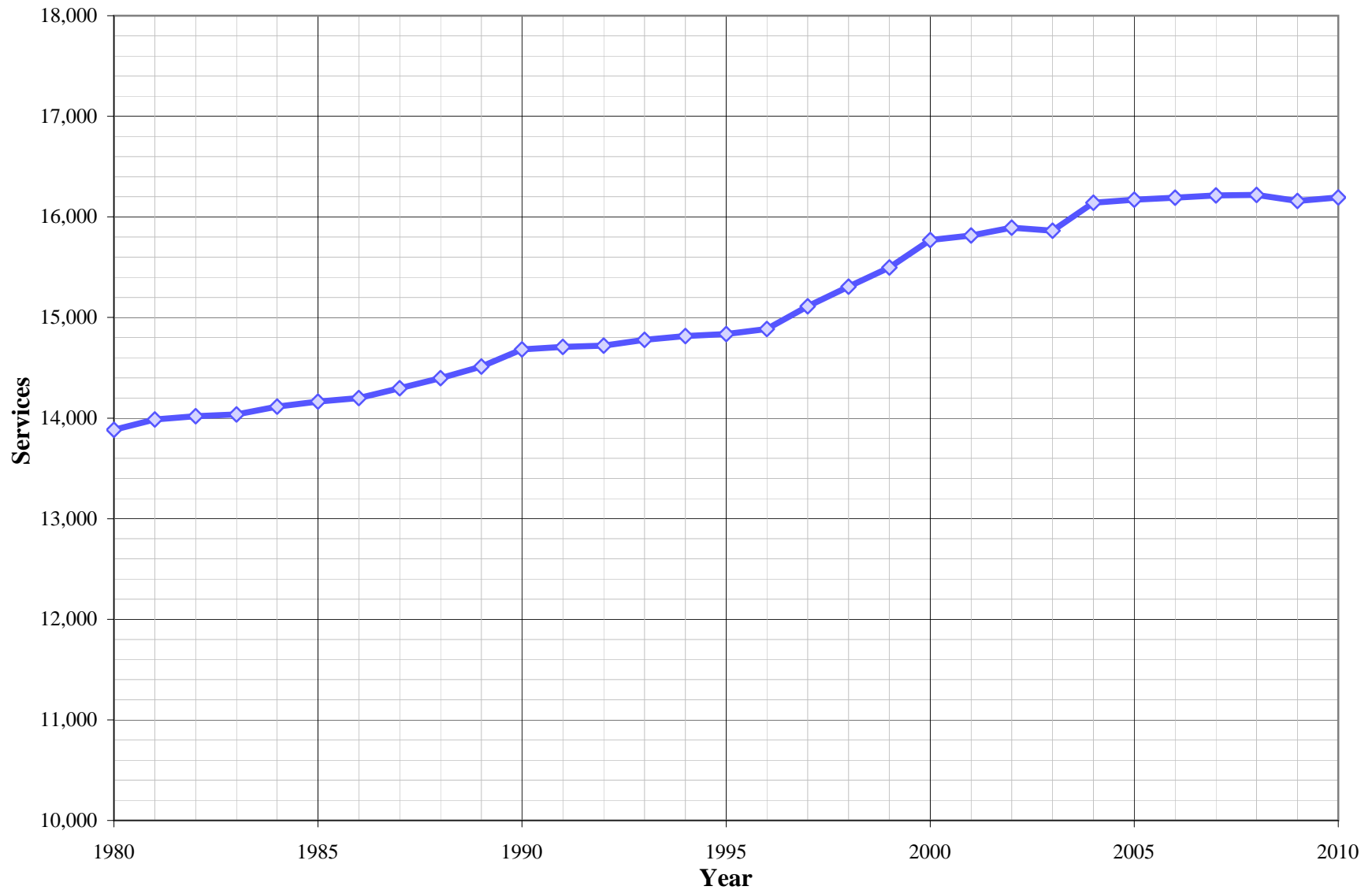
Table of Contents for Worksheets

Worksheet	Title
1	Annual Services
2	Service Growth Percentage
3	District Sales (ccf)
4	District Sales (AF)
5	Demand per Service (Gallons/Service/Year)
6	Demand per Service (Gallons per Day)
7	Percentage Change in Annual Demand
8	Percentage of Total Sales
9	Percentage of Total Demand
10	Demand Scenario 1 (Low Demand Projection)
11	Demand Scenario 2 (Average Demand Projection)
12	Demand Scenario 3 (High Demand Projection)
13	Demand Scenario 4 (Alternate Service Projection)
14	Not used
15	Actual & Projected Annual Average Services
16	Actual & Projected Demand in Acre-Feet
17	Projected Annual Supply by Source
18	Historical and Projected Average Day, Maximum Day, and Peak Demands
19	Population as of the 2000 Average Annual Services
20	Temperature & Rainfall History
21	Groundwater Facilities (if available)
22	Per Capita Water Demand Calculation
23	Indoor/Outdoor Water Usage
24	SB-7 Compliance Demand Worksheet

South San Francisco District Distribution of Services (2010)



South San Francisco District Average Annual Services



California Water Service Company - South San Francisco District
Water Supply and Demand Analysis and Projections
Annual Services

Worksheet 1

Year	Residential	Multi-Residential	Multi-Res. units	Commercial	Industrial	Government	Other	Total
1980	12,039	140	1,995	1,410	140	144	11	13,884
1981	12,110	140	2,049	1,436	136	154	9	13,985
1982	12,114	141	2,058	1,456	130	167	10	14,018
1983	12,107	142	2,063	1,473	128	175	12	14,037
1984	12,167	143	2,093	1,485	122	180	16	14,113
1985	12,201	143	2,098	1,503	115	186	17	14,165
1986	12,202	144	2,109	1,530	113	192	18	14,199
1987	12,240	144	2,110	1,585	110	197	20	14,296
1988	12,310	146	2,250	1,634	93	192	22	14,397
1989	12,404	146	2,273	1,662	82	196	22	14,512
1990	12,556	146	2,197	1,680	81	199	20	14,682
1991	12,577	147	2,283	1,699	80	196	9	14,708
1992	12,594	149	2,305	1,692	78	203	5	14,721
1993	12,635	150	2,324	1,692	79	209	13	14,778
1994	12,650	151	2,416	1,705	80	209	20	14,815
1995	12,661	151	2,416	1,713	81	210	20	14,836
1996	12,716	151	2,412	1,718	79	201	21	14,886
1997	12,911	151	2,415	1,743	78	206	21	15,110
1998	13,078	151	2,427	1,766	76	211	25	15,307
1999	13,227	151	2,434	1,791	75	215	37	15,496
2000	13,450	151	2,460	1,815	74	218	62	15,770
2001	13,465	151	2,425	1,837	74	219	69	15,815
2002	13,534	151	2,461	1,858	72	218	59	15,892
2003	13,532	150	2,597	1,864	71	219	26	15,862
2004	13,787	151	2,584	1,888	68	220	26	16,140
2005	13,829	151	2,630	1,879	68	221	24	16,172
2006	13,829	151	2,577	1,891	69	223	27	16,190
2007	13,838	151	2,488	1,905	66	226	27	16,213
2008	13,826	152	2,427	1,914	66	233	27	16,218
2009	13,796	152	2,401	1,913	63	219	16	16,159
2010	13,840	152		1,909	61	218	13	16,193
5 Yr. Avg.	13,823	151	2,505	1,900	66	224	24	16,190
10 Yr. Avg.	13,689	151	2,505	1,876	69	222	36	16,043
20 Yr. Avg.	13,225	150	2,434	1,798	74	214	28	15,488

Five year average = 2005 through 2009.

Ten year average = 2000 through 2009.

Twenty year average = 1990 through 2009.

Note: Recording of MFR Dwelling Units were stopped in 2009

California Water Service Company - South San Francisco District
Water Supply and Demand Analysis and Projections
Average Annual Services

Worksheet 2

Year	Residential	Multi-Residential	Multi-Res. units	Commercial	Industrial	Government	Other	Total
1980	0.71%	6.87%	17.49%	2.77%	2.19%	3.60%	0.00%	1.02%
1981	0.59%	0.00%	2.71%	1.84%	-2.86%	6.94%	-18.18%	0.73%
1982	0.03%	0.71%	0.44%	1.39%	-4.41%	8.44%	11.11%	0.24%
1983	-0.06%	0.71%	0.24%	1.17%	-1.54%	4.79%	20.00%	0.14%
1984	0.50%	0.70%	1.45%	0.81%	-4.69%	2.86%	33.33%	0.54%
1985	0.28%	0.00%	0.24%	1.21%	-5.74%	3.33%	6.25%	0.37%
1986	0.01%	0.70%	0.52%	1.80%	-1.74%	3.23%	5.88%	0.24%
1987	0.31%	0.00%	0.05%	3.59%	-2.65%	2.60%	11.11%	0.68%
1988	0.57%	1.39%	6.64%	3.09%	-15.45%	-2.54%	10.00%	0.71%
1989	0.76%	0.00%	1.02%	1.71%	-11.83%	2.08%	0.00%	0.80%
1990	1.23%	0.00%	-3.34%	1.08%	-1.22%	1.53%	-9.09%	1.17%
1991	0.17%	0.68%	3.91%	1.13%	-1.23%	-1.51%	-55.00%	0.18%
1992	0.14%	1.36%	0.96%	-0.41%	-2.50%	3.57%	-44.44%	0.09%
1993	0.33%	0.67%	0.82%	0.00%	1.28%	2.96%	160.00%	0.39%
1994	0.12%	0.67%	3.96%	0.77%	1.27%	0.00%	53.85%	0.25%
1995	0.09%	0.00%	0.00%	0.47%	1.25%	0.48%	0.00%	0.14%
1996	0.43%	0.00%	-0.17%	0.29%	-2.47%	-4.29%	5.00%	0.34%
1997	1.53%	0.00%	0.12%	1.46%	-1.27%	2.49%	0.00%	1.50%
1998	1.29%	0.00%	0.50%	1.32%	-2.56%	2.43%	19.05%	1.30%
1999	1.14%	0.00%	0.29%	1.42%	-1.32%	1.90%	48.00%	1.23%
2000	1.69%	0.00%	1.07%	1.34%	-1.33%	1.40%	67.57%	1.77%
2001	0.11%	0.00%	-1.42%	1.21%	0.00%	0.46%	11.29%	0.29%
2002	0.51%	0.00%	1.48%	1.14%	-2.70%	-0.46%	-14.49%	0.49%
2003	-0.01%	-0.66%	5.53%	0.32%	-1.39%	0.46%	-55.93%	-0.19%
2004	1.89%	0.67%	-0.50%	1.29%	-4.23%	0.46%	0.00%	1.75%
2005	0.30%	0.00%	1.78%	-0.48%	0.00%	0.45%	-7.69%	0.19%
2006	0.00%	0.00%	-2.02%	0.64%	1.47%	0.90%	12.50%	0.11%
2007	0.07%	0.00%	-3.45%	0.74%	-4.35%	1.35%	0.00%	0.14%
2008	-0.09%	0.66%	-2.45%	0.47%	0.00%	3.10%	0.00%	0.03%
2009	-0.22%	0.00%	-1.07%	-0.05%	-4.55%	-6.01%	-40.74%	-0.37%
2010	0.32%	0.00%	-100.00%	-0.21%	-3.17%	-0.46%	-18.75%	0.21%
5 Yr. Avg.	0.01%	0.13%	-1.44%	0.26%	-1.49%	-0.04%	-7.19%	0.02%
10 Yr. Avg.	0.43%	0.07%	-0.11%	0.66%	-1.71%	0.21%	-2.75%	0.42%

Five year average = 2005 through 2009.

Ten year average = 2000 through 2009.

California Water Service Company - South San Francisco District
Water Supply and Demand Analysis and Projections
Sales (ccf)

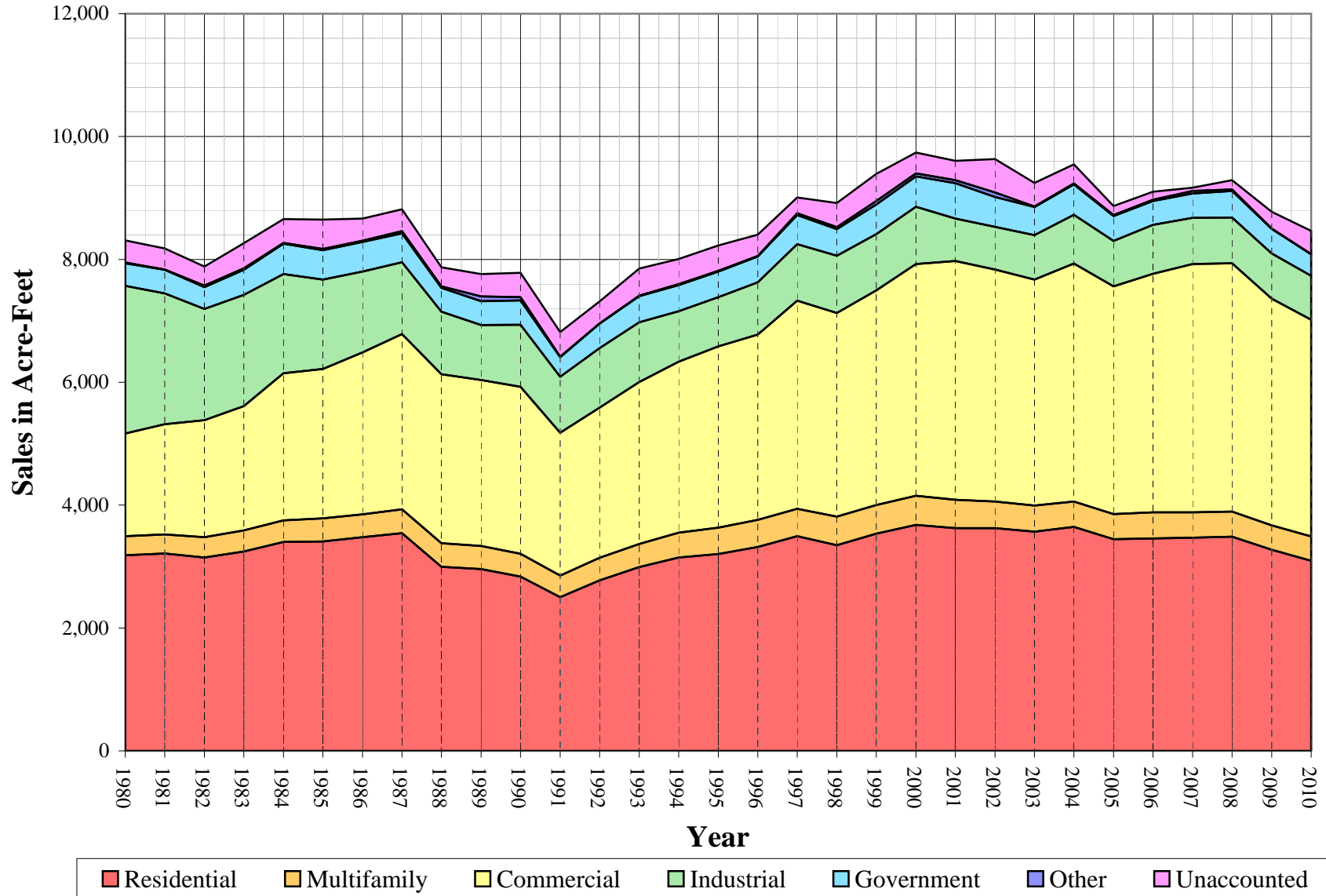
Worksheet 3

Year	Residential	Multifamily	Commercial	Industrial	Government	Other	Unaccounted. Water	Total(ccf) Sales	Total(ccf) Demand	Total(kgal) Demand
1980	1387623	134452	728132	1047136	160029	4736	158,033	3,462,108	3,620,141	2,708,054
1981	1,399,092	136,251	780,340	928,248	167,923	1,658	149,374	3,413,512	3,562,886	2,665,224
1982	1,371,763	143,337	829,252	789,065	155,037	10,785	134,721	3,299,239	3,433,960	2,568,781
1983	1,413,336	150,463	880,701	789,557	177,440	10,594	177,699	3,422,091	3,599,790	2,692,830
1984	1,480,395	154,761	1,042,696	703,982	214,174	5,462	169,744	3,601,470	3,771,214	2,821,064
1985	1,485,475	162,810	1,058,899	633,742	209,613	9,292	207,529	3,559,831	3,767,360	2,818,181
1986	1,514,518	163,298	1,147,618	572,950	210,774	8,303	157,520	3,617,461	3,774,981	2,823,882
1987	1,543,247	168,931	1,242,415	509,344	205,463	16,785	153,823	3,686,185	3,840,008	2,872,526
1988	1,304,819	168,369	1,198,057	442,294	170,128	9,525	136,317	3,293,192	3,429,509	2,565,451
1989	1,288,771	164,777	1,175,752	389,905	170,221	32,917	159,221	3,222,343	3,381,564	2,529,586
1990	1,234,881	162,595	1,184,679	438,873	173,027	22,924	173,003	3,216,979	3,389,982	2,535,883
1991	1,089,150	153,236	1,014,067	395,958	139,906	2,353	174,301	2,794,670	2,968,971	2,220,945
1992	1,209,632	158,989	1,065,232	422,106	173,422	301	157,586	3,029,682	3,187,268	2,384,242
1993	1,302,520	164,783	1,147,293	424,023	185,378	3,060	192,683	3,227,057	3,419,740	2,558,143
1994	1,370,190	176,387	1,213,631	356,566	185,235	7,141	179,315	3,309,150	3,488,465	2,609,553
1995	1,396,629	186,454	1,284,502	349,708	182,131	5,067	178,595	3,404,491	3,583,086	2,680,335
1996	1,446,060	191,978	1,313,015	370,367	184,514	4,029	150,329	3,509,963	3,660,292	2,738,089
1997	1,522,828	193,659	1,475,296	401,774	205,208	12,784	112,321	3,811,549	3,923,870	2,935,259
1998	1,457,840	202,497	1,445,240	405,578	187,901	14,856	170,191	3,713,912	3,884,103	2,905,511
1999	1,539,448	203,228	1,522,864	398,599	210,161	25,617	192,074	3,899,917	4,091,991	3,061,022
2000	1,602,144	206,812	1,643,994	404,965	215,986	20,886	146,986	4,094,787	4,241,773	3,173,067
2001	1,579,500	201,248	1,692,891	301,441	250,071	22,382	136,960	4,047,533	4,184,493	3,130,218
2002	1,580,011	188,628	1,643,639	302,643	213,235	30,805	237,008	3,958,961	4,195,969	3,138,803
2003	1,554,212	185,945	1,602,213	313,900	199,679	4,690	166,267	3,860,639	4,026,906	3,012,335
2004	1,587,343	180,028	1,689,158	343,968	215,405	7,866	135,892	4,023,768	4,159,660	3,111,642
2005	1,500,295	179,165	1,613,611	322,653	176,284	6,521	64,736	3,798,529	3,863,265	2,889,923
2006	1,506,480	185,247	1,690,251	348,198	169,493	8,907	55,979	3,908,576	3,964,555	2,965,693
2007	1,510,843	181,140	1,759,418	328,011	173,821	17,243	23,567	3,970,476	3,994,043	2,987,752
2008	1,518,338	178,203	1,760,587	324,064	189,526	9,384	67,514	3,980,102	4,047,616	3,027,827
2009	1,426,539	172,865	1,607,686	320,363	174,012	1,959	119,868	3,703,424	3,823,292	2,860,021
2010	1,347,090	173,736	1,535,427	312,076	152,388	739	165,923	3,521,456	3,687,379	2,758,351
5 Yr. Avg.	1,492,499	179,324	1,686,311	328,658	176,627	8,803	66,333	3,872,221	3,938,554	2,946,243
10 Yr. Avg.	1,536,571	185,928	1,670,345	331,021	197,751	13,064	115,478	3,934,680	4,050,157	3,029,728

Five year average is from years 2005 through 2009.

Ten year average is from years 2000 through 2009.

South San Francisco Historical Sales



California Water Service Company - South San Francisco District
Water Supply and Demand Analysis and Projections
Sales (AF)

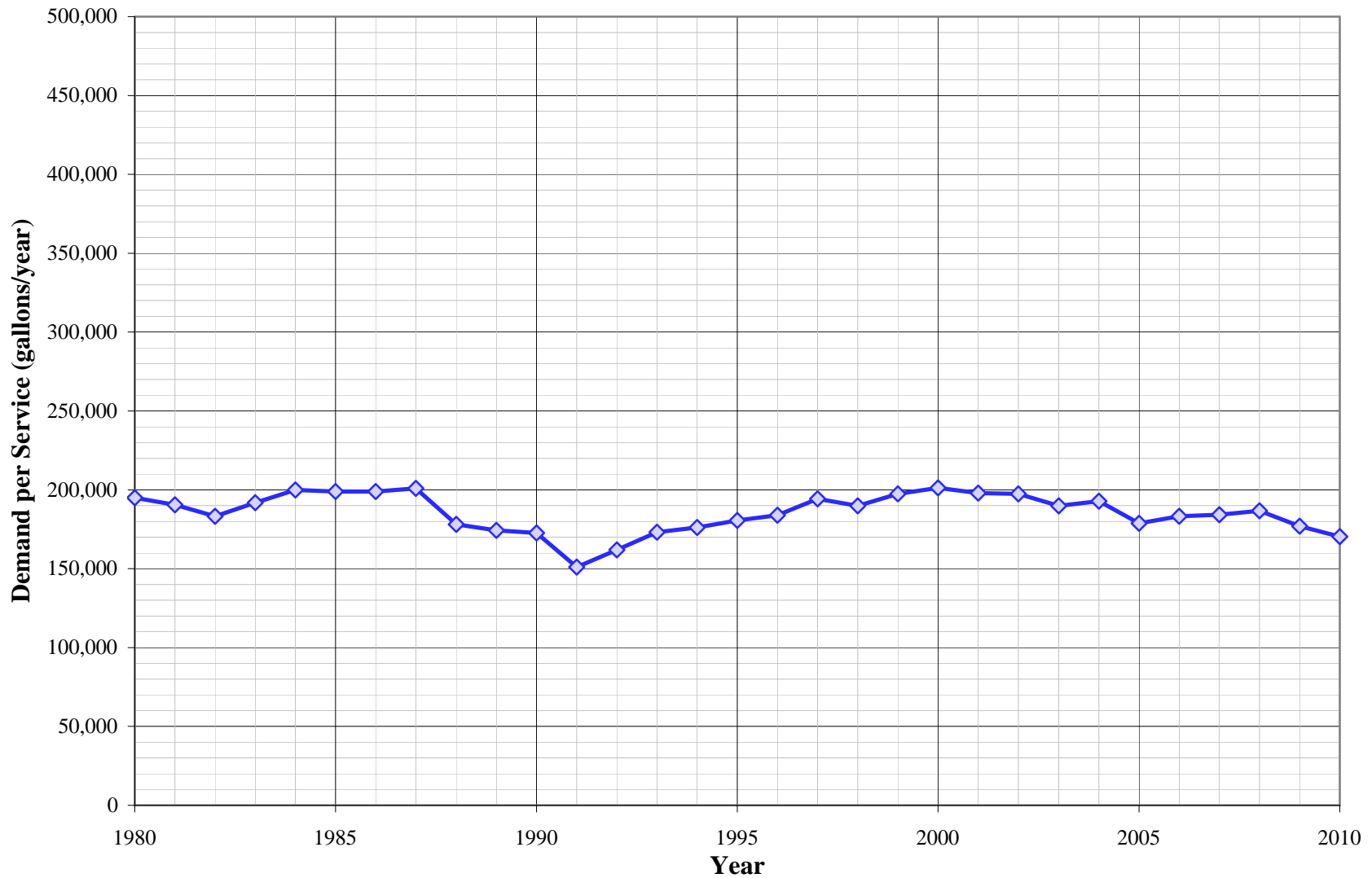
Worksheet 4

Year	Residential	Multifamily	Commercial	Industrial	Government	Other	Unaccounted for Water	Total(AF) Sales	Total(AF) Demand	Total(Mgal) Demand
1980	3,186	309	1,672	2,404	367	11	363	7,948	8,311	2,708
1981	3,212	313	1,791	2,131	385	4	343	7,836	8,179	2,665
1982	3,149	329	1,904	1,811	356	25	309	7,574	7,883	2,569
1983	3,245	345	2,022	1,813	407	24	408	7,856	8,264	2,693
1984	3,399	355	2,394	1,616	492	13	390	8,268	8,658	2,821
1985	3,410	374	2,431	1,455	481	21	476	8,172	8,649	2,818
1986	3,477	375	2,635	1,315	484	19	362	8,305	8,666	2,824
1987	3,543	388	2,852	1,169	472	39	353	8,462	8,815	2,873
1988	2,995	387	2,750	1,015	391	22	313	7,560	7,873	2,565
1989	2,959	378	2,699	895	391	76	366	7,397	7,763	2,530
1990	2,835	373	2,720	1,008	397	53	397	7,385	7,782	2,536
1991	2,500	352	2,328	909	321	5	400	6,416	6,816	2,221
1992	2,777	365	2,445	969	398	1	362	6,955	7,317	2,384
1993	2,990	378	2,634	973	426	7	442	7,408	7,851	2,558
1994	3,146	405	2,786	819	425	16	412	7,597	8,008	2,610
1995	3,206	428	2,949	803	418	12	410	7,816	8,226	2,680
1996	3,320	441	3,014	850	424	9	345	8,058	8,403	2,738
1997	3,496	445	3,387	922	471	29	258	8,750	9,008	2,935
1998	3,347	465	3,318	931	431	34	391	8,526	8,917	2,906
1999	3,534	467	3,496	915	482	59	441	8,953	9,394	3,061
2000	3,678	475	3,774	930	496	48	337	9,400	9,738	3,173
2001	3,626	462	3,886	692	574	51	314	9,292	9,606	3,130
2002	3,627	433	3,773	695	490	71	544	9,089	9,633	3,139
2003	3,568	427	3,678	721	458	11	382	8,863	9,245	3,012
2004	3,644	413	3,878	790	495	18	312	9,237	9,549	3,112
2005	3,444	411	3,704	741	405	15	149	8,720	8,869	2,890
2006	3,458	425	3,880	799	389	20	129	8,973	9,101	2,966
2007	3,468	416	4,039	753	399	40	54	9,115	9,169	2,988
2008	3,486	409	4,042	744	435	22	155	9,137	9,292	3,028
2009	3,275	397	3,691	735	399	4	275	8,502	8,777	2,860
2010	3,092	399	3,525	716	350	2	381	8,084	8,465	2,758
5 Yr. Avg.	3,426	412	3,871	754	405	20	152	8,889	9,042	2,946
10 Yr. Avg.	3,527	427	3,835	760	454	30	265	9,033	9,298	3,030

Five year average is from years 2005 through 2009.

Ten year average is from years 2000 through 2009.

South San Francisco Historical Demand per Service



California Water Service Company - South San Francisco District
Water Supply and Demand Analysis and Projections
Demand per Service (Gallons per Year)

Year	Multi-Residential			Commercial	Industrial	Government	Total Other	Unaccounted/ Total Services	Combined Demand/Service
	Residential	(service)	(unit)						
1980	86,221	718,408	50,415	386,298	5,595,087	831,320	322,070	8,515	195,049
1981	86,424	728,020	49,743	406,501	5,105,719	815,683	137,808	7,990	190,577
1982	84,708	760,451	52,101	426,046	4,540,474	694,465	806,774	7,189	183,249
1983	87,325	792,635	54,558	447,257	4,614,294	758,482	660,405	9,470	191,838
1984	91,018	809,575	55,313	525,246	4,316,518	890,074	255,366	8,997	199,891
1985	91,076	851,681	58,051	527,020	4,122,365	843,018	408,876	10,960	198,954
1986	92,849	848,301	57,921	561,097	3,792,888	821,197	345,060	8,299	198,879
1987	94,316	877,564	59,891	586,367	3,463,780	780,188	627,803	8,049	200,932
1988	79,291	862,663	55,977	548,475	3,557,623	662,836	323,873	7,083	178,193
1989	77,722	844,259	54,229	529,196	3,556,942	649,664	1,119,256	8,207	174,310
1990	73,571	833,079	55,362	527,501	4,053,084	650,418	857,417	8,815	172,721
1991	64,780	779,786	50,210	446,483	3,702,465	533,964	195,574	8,865	151,003
1992	71,849	798,202	51,597	470,951	4,048,170	639,058	45,033	8,008	161,962
1993	77,115	821,775	53,041	507,231	4,015,079	663,504	176,080	9,753	173,105
1994	81,026	873,819	54,614	532,469	3,334,124	662,992	267,092	9,054	176,143
1995	82,517	923,691	57,731	560,931	3,229,627	648,778	189,519	9,005	180,664
1996	85,068	951,056	59,540	571,713	3,507,010	686,697	143,519	7,554	183,937
1997	88,231	959,384	59,986	633,160	3,853,177	745,176	455,386	5,561	194,259
1998	83,387	1,003,167	62,414	612,183	3,992,019	666,160	444,522	8,317	189,816
1999	87,063	1,006,789	62,459	636,059	3,975,637	731,216	517,915	9,272	197,536
2000	89,107	1,024,544	62,889	677,572	4,093,715	741,141	251,997	6,972	201,209
2001	87,750	996,980	62,080	689,369	3,047,210	854,183	242,651	6,478	197,927
2002	87,330	934,461	57,336	661,748	3,144,343	731,701	390,572	11,156	197,508
2003	85,917	927,310	53,560	642,993	3,307,233	682,056	134,937	7,841	189,909
2004	86,124	891,856	52,117	669,268	3,783,911	732,428	226,315	6,298	192,788
2005	81,158	887,581	50,960	642,398	3,549,430	596,695	203,252	2,994	178,704
2006	81,490	917,711	53,774	668,639	3,774,931	568,563	246,774	2,586	183,181
2007	81,673	897,365	54,462	690,885	3,717,716	575,341	477,728	1,087	184,281
2008	82,149	877,007	54,926	688,093	3,672,981	608,478	259,990	3,114	186,695
2009	77,353	850,737	53,858	628,663	3,803,939	594,384	91,590	5,549	176,998
2010	72,810	855,023		601,665	3,827,034	522,909	42,524	7,665	170,342
5 Yr. Avg.	80,765	886,080	53,596	663,736	3,703,799	588,692	255,867	3,066	181,972
10 Yr. Avg.	84,005	920,555	55,596	665,963	3,589,541	668,497	252,580	5,408	188,920

Five year average is from years 2005 through 2009.

Ten year average is from years 2000 through 2009.

California Water Service Company - South San Francisco District

Worksheet 6

Water Supply and Demand Analysis and Projections

Demand per Service (Gallons per Day)

Year	Multi-Residential			Commercial	Industrial	Government	Total Other	Unaccounted/ Total Services	Combined Demand/Service
	Residential	(service)	(unit)						
1980	236	1,968	138	1,058	15,329	2,278	882	23	534
1981	237	1,995	136	1,114	13,988	2,235	378	22	522
1982	232	2,083	143	1,167	12,440	1,903	2,210	20	502
1983	239	2,172	149	1,225	12,642	2,078	1,809	26	526
1984	249	2,218	152	1,439	11,826	2,439	700	25	548
1985	250	2,333	159	1,444	11,294	2,310	1,120	30	545
1986	254	2,324	159	1,537	10,391	2,250	945	23	545
1987	258	2,404	164	1,606	9,490	2,138	1,720	22	550
1988	217	2,363	153	1,503	9,747	1,816	887	19	488
1989	213	2,313	149	1,450	9,745	1,780	3,066	22	478
1990	202	2,282	152	1,445	11,104	1,782	2,349	24	473
1991	177	2,136	138	1,223	10,144	1,463	536	24	414
1992	197	2,187	141	1,290	11,091	1,751	123	22	444
1993	211	2,251	145	1,390	11,000	1,818	482	27	474
1994	222	2,394	150	1,459	9,135	1,816	732	25	483
1995	226	2,531	158	1,537	8,848	1,777	519	25	495
1996	233	2,606	163	1,566	9,608	1,881	393	21	504
1997	242	2,628	164	1,735	10,557	2,042	1,248	15	532
1998	228	2,748	171	1,677	10,937	1,825	1,218	23	520
1999	239	2,758	171	1,743	10,892	2,003	1,419	25	541
2000	244	2,807	172	1,856	11,216	2,031	690	19	551
2001	240	2,731	170	1,889	8,349	2,340	665	18	542
2002	239	2,560	157	1,813	8,615	2,005	1,070	31	541
2003	235	2,541	147	1,762	9,061	1,869	370	21	520
2004	236	2,443	143	1,834	10,367	2,007	620	17	528
2005	222	2,432	140	1,760	9,724	1,635	557	8	490
2006	223	2,514	147	1,832	10,342	1,558	676	7	502
2007	224	2,459	149	1,893	10,186	1,576	1,309	3	505
2008	225	2,403	150	1,885	10,063	1,667	712	9	511
2009	212	2,331	148	1,722	10,422	1,628	251	15	485
2010	199	2,343		1,648	10,485	1,433	117	21	467
5 Yr. Avg.	221	2,428	147	1,818	10,147	1,613	701	8	499
10 Yr. Avg.	230	2,522	152	1,825	9,834	1,831	692	15	518

Five year average is from years 2005 through 2009.

Ten year average is from years 2000 through 2009.

California Water Service Company - South San Francisco District
Water Supply and Demand Analysis and Projections
Percentage Change in Annual Demand

Worksheet 7

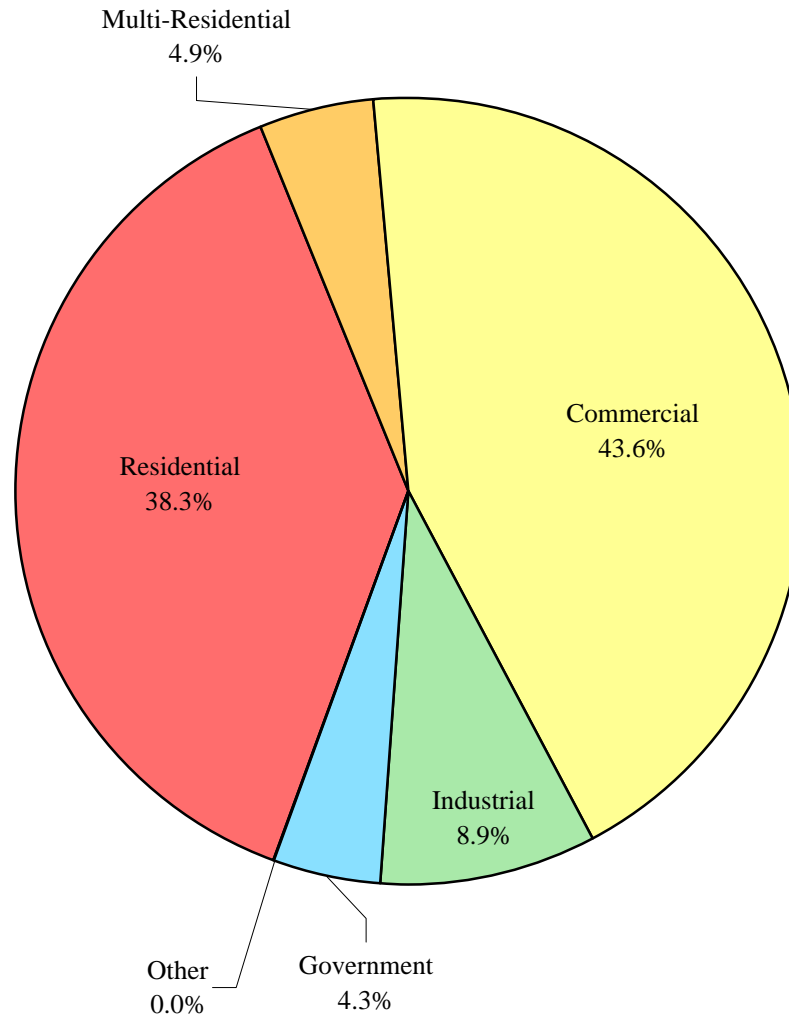
Year	Residential	Multi-Residential	Commercial	Industrial	Government	Other	Unaccounted Water	Total
1981	0.83%	1.34%	7.17%	-11.35%	4.93%	-64.99%	-5.48%	-1.58%
1982	-1.95%	5.20%	6.27%	-14.99%	-7.67%	550.48%	-9.81%	-3.62%
1983	3.03%	4.97%	6.20%	0.06%	14.45%	-1.77%	31.90%	4.83%
1984	4.74%	2.86%	18.39%	-10.84%	20.70%	-48.44%	-4.48%	4.76%
1985	0.34%	5.20%	1.55%	-9.98%	-2.13%	70.12%	22.26%	-0.10%
1986	1.96%	0.30%	8.38%	-9.59%	0.55%	-10.64%	-24.10%	0.20%
1987	1.90%	3.45%	8.26%	-11.10%	-2.52%	102.16%	-2.35%	1.72%
1988	-15.45%	-0.33%	-3.57%	-13.16%	-17.20%	-43.25%	-11.38%	-10.69%
1989	-1.23%	-2.13%	-1.86%	-11.84%	0.05%	245.59%	16.80%	-1.40%
1990	-4.18%	-1.32%	0.76%	12.56%	1.65%	-30.36%	8.66%	0.25%
1991	-11.80%	-5.76%	-14.40%	-9.78%	-19.14%	-89.74%	0.75%	-12.42%
1992	11.06%	3.75%	5.05%	6.60%	23.96%	-87.21%	-9.59%	7.35%
1993	7.68%	3.64%	7.70%	0.45%	6.89%	916.61%	22.27%	7.29%
1994	5.20%	7.04%	5.78%	-15.91%	-0.08%	133.37%	-6.94%	2.01%
1995	1.93%	5.71%	5.84%	-1.92%	-1.68%	-29.04%	-0.40%	2.71%
1996	3.54%	2.96%	2.22%	5.91%	1.31%	-20.49%	-15.83%	2.15%
1997	5.31%	0.88%	12.36%	8.48%	11.22%	217.30%	-25.28%	7.20%
1998	-4.27%	4.56%	-2.04%	0.95%	-8.43%	16.21%	51.52%	-1.01%
1999	5.60%	0.36%	5.37%	-1.72%	11.85%	72.44%	12.86%	5.35%
2000	4.07%	1.76%	7.95%	1.60%	2.77%	-18.47%	-23.47%	3.66%
2001	-1.41%	-2.69%	2.97%	-25.56%	15.78%	7.16%	-6.82%	-1.35%
2002	0.03%	-6.27%	-2.91%	0.40%	-14.73%	37.63%	73.05%	0.27%
2003	-1.63%	-1.42%	-2.52%	3.72%	-6.36%	-84.78%	-29.85%	-4.03%
2004	2.13%	-3.18%	5.43%	9.58%	7.88%	67.72%	-18.27%	3.30%
2005	-5.48%	-0.48%	-4.47%	-6.20%	-18.16%	-17.10%	-52.36%	-7.13%
2006	0.41%	3.39%	4.75%	7.92%	-3.85%	36.59%	-13.53%	2.62%
2007	0.29%	-2.22%	4.09%	-5.80%	2.55%	93.59%	-57.90%	0.74%
2008	0.50%	-1.62%	0.07%	-1.20%	9.04%	-45.58%	186.47%	1.34%
2009	-6.05%	-3.00%	-8.68%	-1.14%	-8.19%	-79.12%	77.55%	-5.54%
2010	-5.57%	0.50%	-4.49%	-2.59%	-12.43%	-62.28%	38.42%	-3.55%
5 Yr. Avg.	-2.07%	-0.79%	-0.85%	-1.28%	-3.72%	-2.32%	28.05%	-1.59%
10 Yr. Avg.	-0.71%	-1.57%	0.67%	-1.67%	-1.33%	-0.24%	13.49%	-0.61%

Five year average is from years 2005 through 2009.

Ten year average is from years 2000 through 2009.

South San Francisco

Percent of Total Sales by Type of Use (2010)



California Water Service Company - South San Francisco District
Water Supply and Demand Analysis and Projections
Percentage of Total Sales

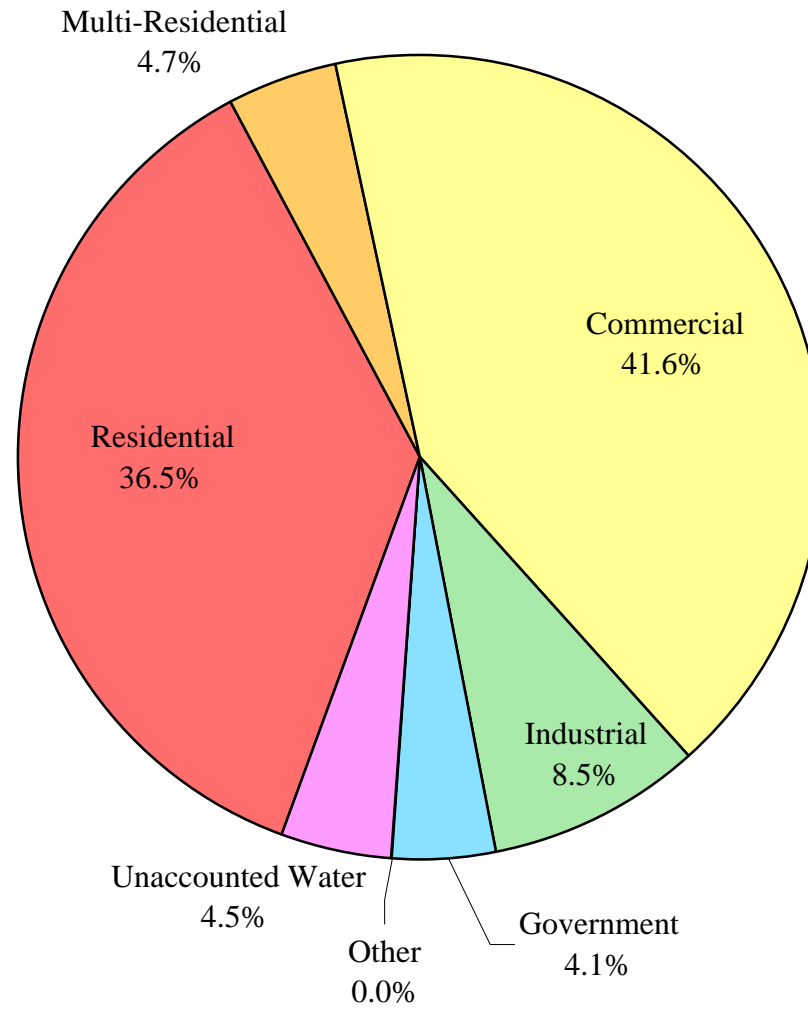
Year	Residential	Multi-Residential	Commercial	Industrial	Government	Other	Percent Total
1981	40.99%	3.99%	22.86%	27.19%	4.92%	0.05%	100.00%
1982	41.58%	4.34%	25.13%	23.92%	4.70%	0.33%	100.00%
1983	41.30%	4.40%	25.74%	23.07%	5.19%	0.31%	100.00%
1984	41.11%	4.30%	28.95%	19.55%	5.95%	0.15%	100.00%
1985	41.73%	4.57%	29.75%	17.80%	5.89%	0.26%	100.00%
1986	41.87%	4.51%	31.72%	15.84%	5.83%	0.23%	100.00%
1987	41.87%	4.58%	33.70%	13.82%	5.57%	0.46%	100.00%
1988	39.62%	5.11%	36.38%	13.43%	5.17%	0.29%	100.00%
1989	39.99%	5.11%	36.49%	12.10%	5.28%	1.02%	100.00%
1990	38.39%	5.05%	36.83%	13.64%	5.38%	0.71%	100.00%
1991	38.97%	5.48%	36.29%	14.17%	5.01%	0.08%	100.00%
1992	39.93%	5.25%	35.16%	13.93%	5.72%	0.01%	100.00%
1993	40.36%	5.11%	35.55%	13.14%	5.74%	0.09%	100.00%
1994	41.41%	5.33%	36.68%	10.78%	5.60%	0.22%	100.00%
1995	41.02%	5.48%	37.73%	10.27%	5.35%	0.15%	100.00%
1996	41.20%	5.47%	37.41%	10.55%	5.26%	0.11%	100.00%
1997	39.95%	5.08%	38.71%	10.54%	5.38%	0.34%	100.00%
1998	39.25%	5.45%	38.91%	10.92%	5.06%	0.40%	100.00%
1999	39.47%	5.21%	39.05%	10.22%	5.39%	0.66%	100.00%
2000	39.13%	5.05%	40.15%	9.89%	5.27%	0.51%	100.00%
2001	39.02%	4.97%	41.83%	7.45%	6.18%	0.55%	100.00%
2002	39.91%	4.76%	41.52%	7.64%	5.39%	0.78%	100.00%
2003	40.26%	4.82%	41.50%	8.13%	5.17%	0.12%	100.00%
2004	39.45%	4.47%	41.98%	8.55%	5.35%	0.20%	100.00%
2005	39.50%	4.72%	42.48%	8.49%	4.64%	0.17%	100.00%
2006	38.54%	4.74%	43.24%	8.91%	4.34%	0.23%	100.00%
2007	38.05%	4.56%	44.31%	8.26%	4.38%	0.43%	100.00%
2008	38.15%	4.48%	44.23%	8.14%	4.76%	0.24%	100.00%
2009	38.52%	4.67%	43.41%	8.65%	4.70%	0.05%	100.00%
2010	38.25%	4.93%	43.60%	8.86%	4.33%	0.02%	100.00%
5 Yr. Avg.	38.55%	4.63%	43.54%	8.49%	4.56%	0.22%	100.00%
10 Yr. Avg.	39.05%	4.72%	42.47%	8.41%	5.02%	0.33%	100.00%

Five year average is from years 2005 through 2009.

Ten year average is from years 2000 through 2009.

South San Francisco

Percent of Total Demand by Type of Use (2010)



California Water Service Company - South San Francisco District
Water Supply and Demand Analysis and Projections
Percentage of Total Demand

Worksheet 9

Year	Residential	Multi-Residential	Commercial	Industrial	Government	Other	Unaccounted Water	Percent Total
1980	38.33%	3.71%	20.11%	28.93%	4.42%	0.13%	4.37%	100.00%
1981	39.27%	3.82%	21.90%	26.05%	4.71%	0.05%	4.19%	100.00%
1982	39.95%	4.17%	24.15%	22.98%	4.51%	0.31%	3.92%	100.00%
1983	39.26%	4.18%	24.47%	21.93%	4.93%	0.29%	4.94%	100.00%
1984	39.26%	4.10%	27.65%	18.67%	5.68%	0.14%	4.50%	100.00%
1985	39.43%	4.32%	28.11%	16.82%	5.56%	0.25%	5.51%	100.00%
1986	40.12%	4.33%	30.40%	15.18%	5.58%	0.22%	4.17%	100.00%
1987	40.19%	4.40%	32.35%	13.26%	5.35%	0.44%	4.01%	100.00%
1988	38.05%	4.91%	34.93%	12.90%	4.96%	0.28%	3.97%	100.00%
1989	38.11%	4.87%	34.77%	11.53%	5.03%	0.97%	4.71%	100.00%
1990	36.43%	4.80%	34.95%	12.95%	5.10%	0.68%	5.10%	100.00%
1991	36.68%	5.16%	34.16%	13.34%	4.71%	0.08%	5.87%	100.00%
1992	37.95%	4.99%	33.42%	13.24%	5.44%	0.01%	4.94%	100.00%
1993	38.09%	4.82%	33.55%	12.40%	5.42%	0.09%	5.63%	100.00%
1994	39.28%	5.06%	34.79%	10.22%	5.31%	0.20%	5.14%	100.00%
1995	38.98%	5.20%	35.85%	9.76%	5.08%	0.14%	4.98%	100.00%
1996	39.51%	5.24%	35.87%	10.12%	5.04%	0.11%	4.11%	100.00%
1997	38.81%	4.94%	37.60%	10.24%	5.23%	0.33%	2.86%	100.00%
1998	37.53%	5.21%	37.21%	10.44%	4.84%	0.38%	4.38%	100.00%
1999	37.62%	4.97%	37.22%	9.74%	5.14%	0.63%	4.69%	100.00%
2000	37.77%	4.88%	38.76%	9.55%	5.09%	0.49%	3.47%	100.00%
2001	37.75%	4.81%	40.46%	7.20%	5.98%	0.53%	3.27%	100.00%
2002	37.66%	4.50%	39.17%	7.21%	5.08%	0.73%	5.65%	100.00%
2003	38.60%	4.62%	39.79%	7.80%	4.96%	0.12%	4.13%	100.00%
2004	38.16%	4.33%	40.61%	8.27%	5.18%	0.19%	3.27%	100.00%
2005	38.83%	4.64%	41.77%	8.35%	4.56%	0.17%	1.68%	100.00%
2006	38.00%	4.67%	42.63%	8.78%	4.28%	0.22%	1.41%	100.00%
2007	37.83%	4.54%	44.05%	8.21%	4.35%	0.43%	0.59%	100.00%
2008	37.51%	4.40%	43.50%	8.01%	4.68%	0.23%	1.67%	100.00%
2009	37.31%	4.52%	42.05%	8.38%	4.55%	0.05%	3.14%	100.00%
2010	36.53%	4.71%	41.64%	8.46%	4.13%	0.02%	4.50%	100.00%
5 Yr. Avg.	37.90%	4.55%	42.80%	8.35%	4.48%	0.22%	1.70%	100.00%
10 Yr. Avg.	37.94%	4.59%	41.28%	8.18%	4.87%	0.32%	2.83%	100.00%

Five year average is from years 2005 through 2009.

Ten year average is from years 2000 through 2009.

California Water Service Company - South San Francisco District

Water Supply and Demand Analysis and Projections

Scenario #1: Based on Maintaining Growth at the 10-Year 5-Year Average Annual Growth and Low Average High Demand per Service for each Customer Class.

Summary of Historical Growth Rate from Worksheet 2			
Customer Type	10 Yr. Avg. Historical Growth Rate	Individual Growth Rate Selected	Notes
Single Family Residential	0.425%	0.250%	Growth rate reduced to account for District build out conditions
Multi Family Residential	0.067%	1.250%	Growth rate increase to account of increase in densification
Commercial	0.662%	0.662%	Historical growth rate used
Industrial	-1.708%	0.421%	Overall growth rate used
Government	0.211%	0.211%	Historical growth rate used
Other	-2.749%	0.421%	Overall growth rate used
Overall	0.421%	0.313%	

Summary of Lowest Demand per Service from Worksheets 5 and 6									
Demand/Serv. Units	Residential	Multi-Residential (service)	(unit)	Commercial	Industrial	Government	Total Other	Unaccounted Total Serv.	Combined Demand/Serv.
Gal/Service/Yr	64,780	779,786	50,210	446,483	3,047,210	533,964	195,574	8,865	151,003
AF/Service/Yr	0.199	2.393	0.154	1.370	9.352	1.639	0.600	0.027	0.463
Gal/Service/Day	177	2,136	138	1,223	8,349	1,463	536	24	414

California Water Service Company - South San Francisco District

Water Supply and Demand Analysis and Projections

Worksheet 10

30-year projection Summary

Scenario #1: Based on Maintaining Growth at the 10-Year 5-Year Average Annual Growth and Low Average High Demand per Service for each Customer Class.

Customer Type	Projected Services 2010	Projected Services 2015	Projected Services 2020	Projected Services 2025	Projected Services 2030	Projected Services 2035	Projected Services 2040	Services projected to be added from 2010 - 2040
Single Family Residential	13,830	14,004	14,180	14,358	14,538	14,721	14,906	1,076
Multi Family Residential	154	164	174	185	197	210	223	70
Commercial	1,926	1,990	2,057	2,126	2,197	2,271	2,347	422
Industrial	63	65	66	67	69	70	72	8
Government	219	222	224	227	229	231	234	14
Other	16	16	17	17	17	18	18	2
Total	16,208	16,461	16,718	16,980	17,248	17,521	17,800	1,592

Customer Type	Projected Demand 2010 (ccf)	Projected Demand 2015 (ccf)	Projected Demand 2020 (ccf)	Projected Demand 2025 (ccf)	Projected Demand 2030 (ccf)	Projected Demand 2035 (ccf)	Projected Demand 2040 (ccf)	Projected demand to be added from 2010 - 2040 (ccf)
Single Family Residential	1,197,652	1,212,698	1,227,933	1,243,359	1,258,978	1,274,795	1,290,809	93,157
Multi Family Residential	160,428	170,709	181,648	193,288	205,675	218,855	232,880	72,451
Commercial	1,149,349	1,187,900	1,227,743	1,268,923	1,311,484	1,355,473	1,400,937	251,588
Industrial	257,712	263,182	268,769	274,475	280,301	286,251	292,328	34,616
Government	156,653	158,312	159,990	161,685	163,398	165,129	166,878	10,226
Other	4,201	4,290	4,381	4,474	4,569	4,666	4,765	564
Unaccounted	192,081	195,070	198,118	201,228	204,401	207,639	210,944	18,863
Total	3,118,075	3,192,160	3,268,582	3,347,432	3,428,807	3,512,808	3,599,542	481,466

Customer Type	Projected Demand 2010 (AF)	Projected Demand 2015 (AF)	Projected Demand 2020 (AF)	Projected Demand 2025 (AF)	Projected Demand 2030 (AF)	Projected Demand 2035 (AF)	Projected Demand 2040 (AF)	Projected demand to be added from 2010 - 2040 (AF)
Single Family Residential	2,749	2,784	2,819	2,854	2,890	2,927	2,963	214
Multi Family Residential	368	392	417	444	472	502	535	166
Commercial	2,639	2,727	2,819	2,913	3,011	3,112	3,216	578
Industrial	592	604	617	630	643	657	671	79
Government	360	363	367	371	375	379	383	23
Other	10	10	10	10	10	11	11	1
Unaccounted	441	448	455	462	469	477	484	43
Total	7,158	7,328	7,504	7,685	7,872	8,064	8,263	1,105

California Water Service Company - South San Francisco District

Water Supply and Demand Analysis and Projections

Worksheet 10

Scenario #1: Based on Maintaining Growth at the

- 10-Year
 5-Year

Average Annual Growth and

- Low
 Average
 High

2000's Projections

Demand per Service for each Customer Class.

Customer Type	Actual Services 2001	Actual Services 2002	Actual Services 2003	Actual Services 2004	Actual Services 2005	Actual Services 2006	Actual Services 2007	Actual Services 2008	Actual Services 2009	Projected Services 2010
Resident	13,465	13,534	13,532	13,787	13,829	13,829	13,838	13,826	13,796	13,830
Multi- Residential	151	151	150	151	151	151	151	152	152	154
Commercial	1,837	1,858	1,864	1,888	1,879	1,891	1,905	1,914	1,913	1,926
Industrial	74	72	71	68	68	69	66	66	63	63
Government	219	218	219	220	221	223	226	233	219	219
Other	69	59	26	26	24	27	27	27	16	16
Total	15,815	15,892	15,862	16,140	16,172	16,190	16,213	16,218	16,159	16,208

Customer Type	Demand 2001(ccf)	Demand 2002(ccf)	Demand 2003(ccf)	Demand 2004(ccf)	Demand 2005(ccf)	Demand 2006(ccf)	Demand 2007(ccf)	Demand 2008(ccf)	Demand 2009(ccf)	Demand 2010(ccf)
Resident	1,166,045	1,172,020	1,171,847	1,193,951	1,197,530	1,197,566	1,198,346	1,197,307	1,194,665	1,197,652
Multi- Residential	157,405	157,405	156,363	157,405	157,405	157,405	157,405	158,447	158,447	160,428
Commercial	1,096,429	1,108,963	1,112,545	1,126,869	1,121,497	1,128,660	1,137,016	1,142,387	1,141,791	1,149,349
Industrial	301,440	293,293	289,219	276,999	276,999	281,072	268,852	268,852	256,631	257,712
Government	156,323	155,609	156,323	157,037	157,751	159,178	161,320	166,316	156,323	156,653
Other	18,040	15,425	6,798	6,798	6,275	7,059	7,059	7,059	4,183	4,201
Unaccounted	187,419	188,332	187,976	191,274	191,645	191,863	192,136	192,195	191,490	192,081
Total	3,083,101	3,091,047	3,081,070	3,110,332	3,109,102	3,122,804	3,122,133	3,132,564	3,103,531	3,118,075

Customer Type	Demand 2001(AF)	Demand 2002(AF)	Demand 2003(AF)	Demand 2004(AF)	Demand 2005(AF)	Demand 2006(AF)	Demand 2007(AF)	Demand 2008(AF)	Demand 2009(AF)	Demand 2010(AF)
Resident	2,677	2,691	2,690	2,741	2,749	2,749	2,751	2,749	2,743	2,749
Multi- Residential	361	361	359	361	361	361	361	364	364	368
Commercial	2,517	2,546	2,554	2,587	2,575	2,591	2,610	2,623	2,621	2,639
Industrial	692	673	664	636	636	645	617	617	589	592
Government	359	357	359	361	362	365	370	382	359	360
Other	41	35	16	16	14	16	16	16	10	10
Unaccounted	430	432	432	439	440	440	441	441	440	441
Total	7,078	7,096	7,073	7,140	7,138	7,169	7,167	7,191	7,125	7,158

California Water Service Company - South San Francisco District

Water Supply and Demand Analysis and Projections

Worksheet 10

2010's Projections

Scenario #1: Based on Maintaining Growth at the 10-Year 5-Year Average Annual Growth and Low Average High Demand per Service for each Customer Class.

Customer Type	Projected Services 2011	Projected Services 2012	Projected Services 2013	Projected Services 2014	Projected Services 2015	Projected Services 2016	Projected Services 2017	Projected Services 2018	Projected Services 2019	Projected Services 2020
Resident	13,865	13,899	13,934	13,969	14,004	14,039	14,074	14,109	14,144	14,180
Multi- Residential	156	158	160	162	164	166	168	170	172	174
Commercial	1,938	1,951	1,964	1,977	1,990	2,003	2,017	2,030	2,043	2,057
Industrial	64	64	64	64	65	65	65	65	66	66
Government	220	220	221	221	222	222	223	223	224	224
Other	16	16	16	16	16	16	17	17	17	17
Total	16,258	16,309	16,359	16,410	16,461	16,512	16,563	16,614	16,666	16,718

Customer Type	Demand 2011(ccf)	Demand 2012(ccf)	Demand 2013(ccf)	Demand 2014(ccf)	Demand 2015(ccf)	Demand 2016(ccf)	Demand 2017(ccf)	Demand 2018(ccf)	Demand 2019(ccf)	Demand 2020(ccf)
Resident	1,200,646	1,203,648	1,206,657	1,209,674	1,212,698	1,215,730	1,218,769	1,221,816	1,224,870	1,227,933
Multi- Residential	162,433	164,464	166,520	168,601	170,709	172,842	175,003	177,191	179,405	181,648
Commercial	1,156,958	1,164,617	1,172,327	1,180,088	1,187,900	1,195,764	1,203,680	1,211,648	1,219,669	1,227,743
Industrial	258,797	259,886	260,980	262,079	263,182	264,290	265,403	266,520	267,642	268,769
Government	156,983	157,315	157,646	157,979	158,312	158,646	158,981	159,317	159,653	159,990
Other	4,218	4,236	4,254	4,272	4,290	4,308	4,326	4,344	4,363	4,381
Unaccounted	192,674	193,269	193,867	194,467	195,070	195,675	196,282	196,892	197,504	198,118
Total	3,132,710	3,147,435	3,162,251	3,177,159	3,192,160	3,207,255	3,222,444	3,237,727	3,253,106	3,268,582

Customer Type	Demand 2011(AF)	Demand 2012(AF)	Demand 2013(AF)	Demand 2014(AF)	Demand 2015(AF)	Demand 2016(AF)	Demand 2017(AF)	Demand 2018(AF)	Demand 2019(AF)	Demand 2020(AF)
Resident	2,756	2,763	2,770	2,777	2,784	2,791	2,798	2,805	2,812	2,819
Multi- Residential	373	378	382	387	392	397	402	407	412	417
Commercial	2,656	2,674	2,691	2,709	2,727	2,745	2,763	2,782	2,800	2,819
Industrial	594	597	599	602	604	607	609	612	614	617
Government	360	361	362	363	363	364	365	366	367	367
Other	10	10	10	10	10	10	10	10	10	10
Unaccounted	442	444	445	446	448	449	451	452	453	455
Total	7,192	7,226	7,260	7,294	7,328	7,363	7,398	7,433	7,468	7,504

California Water Service Company - South San Francisco District

Water Supply and Demand Analysis and Projections

Scenario #1: Based on Maintaining Growth at the

- 10-Year
- 5-Year

Average Annual Growth and

- Low
- Average
- High

2020's Projections

Demand per Service for each Customer Class.

Customer Type	Projected Services 2021	Projected Services 2022	Projected Services 2023	Projected Services 2024	Projected Services 2025	Projected Services 2026	Projected Services 2027	Projected Services 2028	Projected Services 2029	Projected Services 2030
Resident	14,215	14,251	14,286	14,322	14,358	14,394	14,430	14,466	14,502	14,538
Multi- Residential	176	179	181	183	185	188	190	192	195	197
Commercial	2,071	2,084	2,098	2,112	2,126	2,140	2,154	2,169	2,183	2,197
Industrial	66	67	67	67	67	68	68	68	69	69
Government	225	225	226	226	227	227	227	228	228	229
Other	17	17	17	17	17	17	17	17	17	17
Total	16,770	16,822	16,875	16,927	16,980	17,033	17,087	17,140	17,194	17,248

Customer Type	Demand 2021(ccf)	Demand 2022(ccf)	Demand 2023(ccf)	Demand 2024(ccf)	Demand 2025(ccf)	Demand 2026(ccf)	Demand 2027(ccf)	Demand 2028(ccf)	Demand 2029(ccf)	Demand 2030(ccf)
Resident	1,231,002	1,234,080	1,237,165	1,240,258	1,243,359	1,246,467	1,249,583	1,252,707	1,255,839	1,258,978
Multi- Residential	183,919	186,218	188,545	190,902	193,288	195,705	198,151	200,628	203,136	205,675
Commercial	1,235,871	1,244,052	1,252,288	1,260,578	1,268,923	1,277,323	1,285,779	1,294,291	1,302,859	1,311,484
Industrial	269,901	271,037	272,178	273,324	274,475	275,630	276,790	277,956	279,126	280,301
Government	160,327	160,666	161,005	161,344	161,685	162,026	162,368	162,710	163,054	163,398
Other	4,399	4,418	4,437	4,455	4,474	4,493	4,512	4,531	4,550	4,569
Unaccounted	198,735	199,355	199,977	200,601	201,228	201,858	202,490	203,124	203,762	204,401
Total	3,284,154	3,299,825	3,315,594	3,331,463	3,347,432	3,363,501	3,379,673	3,395,947	3,412,325	3,428,807

Customer Type	Demand 2021(AF)	Demand 2022(AF)	Demand 2023(AF)	Demand 2024(AF)	Demand 2025(AF)	Demand 2026(AF)	Demand 2027(AF)	Demand 2028(AF)	Demand 2029(AF)	Demand 2030(AF)
Resident	2,826	2,833	2,840	2,847	2,854	2,862	2,869	2,876	2,883	2,890
Multi- Residential	422	427	433	438	444	449	455	461	466	472
Commercial	2,837	2,856	2,875	2,894	2,913	2,932	2,952	2,971	2,991	3,011
Industrial	620	622	625	627	630	633	635	638	641	643
Government	368	369	370	370	371	372	373	374	374	375
Other	10	10	10	10	10	10	10	10	10	10
Unaccounted	456	458	459	461	462	463	465	466	468	469
Total	7,539	7,575	7,612	7,648	7,685	7,722	7,759	7,796	7,834	7,872

California Water Service Company - South San Francisco District
Water Supply and Demand Analysis and Projections

Scenario #1: Based on Maintaining Growth at the

- 10-Year
 5-Year

Average Annual Growth and

- Low
 Average
 High

2030's Projections

Demand per Service for each Customer Class.

Customer Type	Projected Services 2031	Projected Services 2032	Projected Services 2033	Projected Services 2034	Projected Services 2035	Projected Services 2036	Projected Services 2037	Projected Services 2038	Projected Services 2039	Projected Services 2040
Resident	14,575	14,611	14,647	14,684	14,721	14,758	14,794	14,831	14,869	14,906
Multi- Residential	200	202	205	207	210	213	215	218	221	223
Commercial	2,212	2,227	2,241	2,256	2,271	2,286	2,301	2,316	2,332	2,347
Industrial	69	69	70	70	70	71	71	71	71	72
Government	229	230	230	231	231	232	232	233	233	234
Other	18	18	18	18	18	18	18	18	18	18
Total	17,302	17,357	17,411	17,466	17,521	17,577	17,632	17,688	17,744	17,800

Customer Type	Demand 2031(ccf)	Demand 2032(ccf)	Demand 2033(ccf)	Demand 2034(ccf)	Demand 2035(ccf)	Demand 2036(ccf)	Demand 2037(ccf)	Demand 2038(ccf)	Demand 2039(ccf)	Demand 2040(ccf)
Resident	1,262,126	1,265,281	1,268,444	1,271,616	1,274,795	1,277,982	1,281,177	1,284,379	1,287,590	1,290,809
Multi- Residential	208,246	210,849	213,484	216,153	218,855	221,591	224,360	227,165	230,004	232,880
Commercial	1,320,166	1,328,906	1,337,703	1,346,559	1,355,473	1,364,446	1,373,479	1,382,571	1,391,724	1,400,937
Industrial	281,481	282,666	283,856	285,051	286,251	287,456	288,667	289,882	291,102	292,328
Government	163,742	164,088	164,434	164,781	165,129	165,477	165,826	166,176	166,527	166,878
Other	4,588	4,607	4,627	4,646	4,666	4,686	4,705	4,725	4,745	4,765
Unaccounted	205,044	205,689	206,336	206,986	207,639	208,295	208,953	209,614	210,278	210,944
Total	3,445,393	3,462,086	3,478,886	3,495,793	3,512,808	3,529,933	3,547,167	3,564,513	3,581,971	3,599,542

Customer Type	Demand 2031(AF)	Demand 2032(AF)	Demand 2033(AF)	Demand 2034(AF)	Demand 2035(AF)	Demand 2036(AF)	Demand 2037(AF)	Demand 2038(AF)	Demand 2039(AF)	Demand 2040(AF)
Resident	2,897	2,905	2,912	2,919	2,927	2,934	2,941	2,949	2,956	2,963
Multi- Residential	478	484	490	496	502	509	515	522	528	535
Commercial	3,031	3,051	3,071	3,091	3,112	3,132	3,153	3,174	3,195	3,216
Industrial	646	649	652	654	657	660	663	665	668	671
Government	376	377	377	378	379	380	381	381	382	383
Other	11	11	11	11	11	11	11	11	11	11
Unaccounted	471	472	474	475	477	478	480	481	483	484
Total	7,910	7,948	7,986	8,025	8,064	8,104	8,143	8,183	8,223	8,263

California Water Service Company - South San Francisco District

Water Supply and Demand Analysis and Projections

Scenario #2: Based on Maintaining Growth at the 10-Year 5-Year Average Annual Growth and Low Average High Demand per Service for each Customer Class.

Summary of Historical Growth Rate from Worksheet 2			
Customer Type	10 Yr. Avg. Historical Growth Rate	Individual Growth Rate Selected	Notes
Single Family Residential	0.425%	0.250%	Growth rate reduced to account for District build out conditions
Multi Family Residential	0.067%	1.250%	Growth rate increase to account of increase in densification
Commercial	0.662%	0.662%	Historical growth rate used
Industrial	-1.708%	0.421%	Overall growth rate used
Government	0.211%	0.211%	Historical growth rate used
Other	-2.749%	0.421%	Overall growth rate used
Overall	0.421%	0.313%	

Summary of Average Demand per Service from Worksheets 5 and 6									
Demand/Serv. Units	Residential	Multi-Residential		Commercial	Industrial	Government	Total Other	Unaccounted Total Serv.	Combined Demand/Serv.
		(service)	(unit)						
Gal/Service/Yr	81,673	897,365	54,462	570,060	3,717,716	575,341	477,728	7,435	184,281
AF/Service/Yr	0.251	2.754	0.167	1.749	11.409	1.766	1.466	0.023	0.566
Gal/Service/Day	224	2,459	149	1,562	10,186	1,576	1,309	20	505

California Water Service Company - South San Francisco District

Water Supply and Demand Analysis and Projections

Worksheet 11

30-year projection Summary

Scenario #2: Based on Maintaining Growth at the

- 10-Year
 5-Year

Average Annual Growth and

- Low
 Average
 High

Demand per Service for each Customer Class.

Customer Type	Projected Services 2010	Projected Services 2015	Projected Services 2020	Projected Services 2025	Projected Services 2030	Projected Services 2035	Projected Services 2040	Services projected to be added from 2010 - 2040
Single Family Residential	13,830	14,004	14,180	14,358	14,538	14,721	14,906	1,076
Multi Family Residential	154	164	174	185	197	210	223	70
Commercial	1,926	1,990	2,057	2,126	2,197	2,271	2,347	422
Industrial	63	65	66	67	69	70	72	8
Government	219	222	224	227	229	231	234	14
Other	16	16	17	17	17	18	18	2
Total	16,208	16,461	16,718	16,980	17,248	17,521	17,800	1,592

Customer Type	Projected Demand 2010 (ccf)	Projected Demand 2015 (ccf)	Projected Demand 2020 (ccf)	Projected Demand 2025 (ccf)	Projected Demand 2030 (ccf)	Projected Demand 2035 (ccf)	Projected Demand 2040 (ccf)	Projected demand to be added from 2010 - 2040 (ccf)
Single Family Residential	1,509,962	1,528,931	1,548,139	1,567,587	1,587,281	1,607,221	1,627,412	117,450
Multi Family Residential	184,618	196,449	209,038	222,433	236,687	251,855	267,994	83,376
Commercial	1,467,465	1,516,686	1,567,557	1,620,135	1,674,476	1,730,640	1,788,688	321,222
Industrial	314,418	321,093	327,909	334,870	341,978	349,238	356,651	42,233
Government	168,792	170,580	172,387	174,214	176,059	177,925	179,810	11,018
Other	10,261	10,479	10,701	10,928	11,160	11,397	11,639	1,378
Unaccounted	161,090	163,596	166,153	168,761	171,422	174,138	176,909	15,820
Total	3,816,606	3,907,814	4,001,884	4,098,928	4,199,064	4,302,413	4,409,104	592,497

Customer Type	Projected Demand 2010 (AF)	Projected Demand 2015 (AF)	Projected Demand 2020 (AF)	Projected Demand 2025 (AF)	Projected Demand 2030 (AF)	Projected Demand 2035 (AF)	Projected Demand 2040 (AF)	Projected demand to be added from 2010 - 2040 (AF)
Single Family Residential	3,466	3,510	3,554	3,599	3,644	3,690	3,736	270
Multi Family Residential	424	451	480	511	543	578	615	191
Commercial	3,369	3,482	3,599	3,719	3,844	3,973	4,106	737
Industrial	722	737	753	769	785	802	819	97
Government	387	392	396	400	404	408	413	25
Other	24	24	25	25	26	26	27	3
Unaccounted	370	376	381	387	394	400	406	36
Total	8,762	8,971	9,187	9,410	9,640	9,877	10,122	1,360

California Water Service Company - South San Francisco District
Water Supply and Demand Analysis and Projections

Scenario #2: Based on Maintaining Growth at the

- 10-Year
 5-Year

Average Annual Growth and

- Low
 Average
 High

2000's Projections

Demand per Service for each Customer Class.

Customer Type	Actual Services 2001	Actual Services 2002	Actual Services 2003	Actual Services 2004	Actual Services 2005	Actual Services 2006	Actual Services 2007	Actual Services 2008	Actual Services 2009	Projected Services 2010
Resident	13,465	13,534	13,532	13,787	13,829	13,829	13,838	13,826	13,796	13,830
Multi- Residential	151	151	150	151	151	151	151	152	152	154
Commercial	1,837	1,858	1,864	1,888	1,879	1,891	1,905	1,914	1,913	1,926
Industrial	74	72	71	68	68	69	66	66	63	63
Government	219	218	219	220	221	223	226	233	219	219
Other	69	59	26	26	24	27	27	27	16	16
Total	15,815	15,892	15,862	16,140	16,172	16,190	16,213	16,218	16,159	16,208

Customer Type	Demand 2001(ccf)	Demand 2002(ccf)	Demand 2003(ccf)	Demand 2004(ccf)	Demand 2005(ccf)	Demand 2006(ccf)	Demand 2007(ccf)	Demand 2008(ccf)	Demand 2009(ccf)	Demand 2010(ccf)
Resident	1,470,113	1,477,646	1,477,428	1,505,296	1,509,809	1,509,854	1,510,837	1,509,527	1,506,197	1,509,962
Multi- Residential	181,139	181,139	179,940	181,139	181,139	181,139	181,139	182,339	182,339	184,618
Commercial	1,399,898	1,415,901	1,420,474	1,438,763	1,431,905	1,441,049	1,451,718	1,458,577	1,457,815	1,467,465
Industrial	367,768	357,829	352,859	337,949	337,949	342,919	328,010	328,010	313,100	314,418
Government	168,436	167,667	168,436	169,206	169,975	171,513	173,820	179,204	168,436	168,792
Other	44,065	37,679	16,604	16,604	15,327	17,243	17,243	17,243	10,218	10,261
Unaccounted	157,180	157,945	157,647	160,413	160,724	160,907	161,136	161,185	160,594	161,090
Total	3,788,600	3,795,807	3,773,388	3,809,370	3,806,828	3,824,625	3,823,903	3,836,084	3,798,699	3,816,606

Customer Type	Demand 2001(AF)	Demand 2002(AF)	Demand 2003(AF)	Demand 2004(AF)	Demand 2005(AF)	Demand 2006(AF)	Demand 2007(AF)	Demand 2008(AF)	Demand 2009(AF)	Demand 2010(AF)
Resident	3,375	3,392	3,392	3,456	3,466	3,466	3,468	3,465	3,458	3,466
Multi- Residential	416	416	413	416	416	416	416	419	419	424
Commercial	3,214	3,250	3,261	3,303	3,287	3,308	3,333	3,348	3,347	3,369
Industrial	844	821	810	776	776	787	753	753	719	722
Government	387	385	387	388	390	394	399	411	387	387
Other	101	86	38	38	35	40	40	40	23	24
Unaccounted	361	363	362	368	369	369	370	370	369	370
Total	8,697	8,714	8,663	8,745	8,739	8,780	8,779	8,806	8,721	8,762

California Water Service Company - South San Francisco District

Water Supply and Demand Analysis and Projections

Worksheet 11

Scenario #2: Based on Maintaining Growth at the

- 10-Year
 5-Year

Average Annual Growth and

- Low
 Average
 High

2010's Projections

Demand per Service for each Customer Class.

Customer Type	Projected Services 2011	Projected Services 2012	Projected Services 2013	Projected Services 2014	Projected Services 2015	Projected Services 2016	Projected Services 2017	Projected Services 2018	Projected Services 2019	Projected Services 2020
Resident	13,865	13,899	13,934	13,969	14,004	14,039	14,074	14,109	14,144	14,180
Multi- Residential	156	158	160	162	164	166	168	170	172	174
Commercial	1,938	1,951	1,964	1,977	1,990	2,003	2,017	2,030	2,043	2,057
Industrial	64	64	64	64	65	65	65	65	66	66
Government	220	220	221	221	222	222	223	223	224	224
Other	16	16	16	16	16	16	17	17	17	17
Total	16,258	16,309	16,359	16,410	16,461	16,512	16,563	16,614	16,666	16,718

Customer Type	Demand 2011(ccf)	Demand 2012(ccf)	Demand 2013(ccf)	Demand 2014(ccf)	Demand 2015(ccf)	Demand 2016(ccf)	Demand 2017(ccf)	Demand 2018(ccf)	Demand 2019(ccf)	Demand 2020(ccf)
Resident	1,513,737	1,517,521	1,521,315	1,525,118	1,528,931	1,532,754	1,536,586	1,540,427	1,544,278	1,548,139
Multi- Residential	186,926	189,262	191,628	194,024	196,449	198,904	201,391	203,908	206,457	209,038
Commercial	1,477,180	1,486,959	1,496,802	1,506,711	1,516,686	1,526,726	1,536,833	1,547,007	1,557,248	1,567,557
Industrial	315,742	317,071	318,406	319,747	321,093	322,445	323,802	325,165	326,534	327,909
Government	169,148	169,505	169,863	170,221	170,580	170,940	171,301	171,662	172,024	172,387
Other	10,304	10,348	10,391	10,435	10,479	10,523	10,567	10,612	10,656	10,701
Unaccounted	161,587	162,086	162,588	163,091	163,596	164,103	164,613	165,124	165,637	166,153
Total	3,834,624	3,852,753	3,870,993	3,889,347	3,907,814	3,926,395	3,945,092	3,963,905	3,982,836	4,001,884

Customer Type	Demand 2011(AF)	Demand 2012(AF)	Demand 2013(AF)	Demand 2014(AF)	Demand 2015(AF)	Demand 2016(AF)	Demand 2017(AF)	Demand 2018(AF)	Demand 2019(AF)	Demand 2020(AF)
Resident	3,475	3,484	3,492	3,501	3,510	3,519	3,528	3,536	3,545	3,554
Multi- Residential	429	434	440	445	451	457	462	468	474	480
Commercial	3,391	3,414	3,436	3,459	3,482	3,505	3,528	3,551	3,575	3,599
Industrial	725	728	731	734	737	740	743	746	750	753
Government	388	389	390	391	392	392	393	394	395	396
Other	24	24	24	24	24	24	24	24	24	25
Unaccounted	371	372	373	374	376	377	378	379	380	381
Total	8,803	8,845	8,887	8,929	8,971	9,014	9,057	9,100	9,143	9,187

California Water Service Company - South San Francisco District
Water Supply and Demand Analysis and Projections

Scenario #2: Based on Maintaining Growth at the

- 10-Year
- 5-Year

Average Annual Growth and

- Low
- Average
- High

2020's Projections

Demand per Service for each Customer Class.

Customer Type	Projected Services 2021	Projected Services 2022	Projected Services 2023	Projected Services 2024	Projected Services 2025	Projected Services 2026	Projected Services 2027	Projected Services 2028	Projected Services 2029	Projected Services 2030
Resident	14,215	14,251	14,286	14,322	14,358	14,394	14,430	14,466	14,502	14,538
Multi- Residential	176	179	181	183	185	188	190	192	195	197
Commercial	2,071	2,084	2,098	2,112	2,126	2,140	2,154	2,169	2,183	2,197
Industrial	66	67	67	67	67	68	68	68	69	69
Government	225	225	226	226	227	227	227	228	228	229
Other	17	17	17	17	17	17	17	17	17	17
Total	16,770	16,822	16,875	16,927	16,980	17,033	17,087	17,140	17,194	17,248

Customer Type	Demand 2021(ccf)	Demand 2022(ccf)	Demand 2023(ccf)	Demand 2024(ccf)	Demand 2025(ccf)	Demand 2026(ccf)	Demand 2027(ccf)	Demand 2028(ccf)	Demand 2029(ccf)	Demand 2030(ccf)
Resident	1,552,009	1,555,889	1,559,779	1,563,678	1,567,587	1,571,506	1,575,435	1,579,374	1,583,322	1,587,281
Multi- Residential	211,651	214,296	216,975	219,687	222,433	225,214	228,029	230,879	233,765	236,687
Commercial	1,577,934	1,588,380	1,598,895	1,609,480	1,620,135	1,630,860	1,641,656	1,652,524	1,663,464	1,674,476
Industrial	329,289	330,676	332,068	333,466	334,870	336,280	337,695	339,117	340,545	341,978
Government	172,751	173,116	173,481	173,847	174,214	174,581	174,950	175,319	175,689	176,059
Other	10,746	10,792	10,837	10,883	10,928	10,974	11,021	11,067	11,114	11,160
Unaccounted	166,670	167,190	167,711	168,235	168,761	169,289	169,819	170,351	170,886	171,422
Total	4,021,051	4,040,338	4,059,746	4,079,276	4,098,928	4,118,704	4,138,605	4,158,631	4,178,784	4,199,064

Customer Type	Demand 2021(AF)	Demand 2022(AF)	Demand 2023(AF)	Demand 2024(AF)	Demand 2025(AF)	Demand 2026(AF)	Demand 2027(AF)	Demand 2028(AF)	Demand 2029(AF)	Demand 2030(AF)
Resident	3,563	3,572	3,581	3,590	3,599	3,608	3,617	3,626	3,635	3,644
Multi- Residential	486	492	498	504	511	517	523	530	537	543
Commercial	3,622	3,646	3,671	3,695	3,719	3,744	3,769	3,794	3,819	3,844
Industrial	756	759	762	766	769	772	775	779	782	785
Government	397	397	398	399	400	401	402	402	403	404
Other	25	25	25	25	25	25	25	25	26	26
Unaccounted	383	384	385	386	387	389	390	391	392	394
Total	9,231	9,275	9,320	9,365	9,410	9,455	9,501	9,547	9,593	9,640

California Water Service Company - South San Francisco District
Water Supply and Demand Analysis and Projections

Scenario #2: Based on Maintaining Growth at the

- 10-Year
 5-Year

Average Annual Growth and

- Low
 Average
 High

2030's Projections

Demand per Service for each Customer Class.

Customer Type	Projected Services 2031	Projected Services 2032	Projected Services 2033	Projected Services 2034	Projected Services 2035	Projected Services 2036	Projected Services 2037	Projected Services 2038	Projected Services 2039	Projected Services 2040
Resident	14,575	14,611	14,647	14,684	14,721	14,758	14,794	14,831	14,869	14,906
Multi- Residential	200	202	205	207	210	213	215	218	221	223
Commercial	2,212	2,227	2,241	2,256	2,271	2,286	2,301	2,316	2,332	2,347
Industrial	69	69	70	70	70	71	71	71	71	72
Government	229	230	230	231	231	232	232	233	233	234
Other	18	18	18	18	18	18	18	18	18	18
Total	17,302	17,357	17,411	17,466	17,521	17,577	17,632	17,688	17,744	17,800

Customer Type	Demand 2031(ccf)	Demand 2032(ccf)	Demand 2033(ccf)	Demand 2034(ccf)	Demand 2035(ccf)	Demand 2036(ccf)	Demand 2037(ccf)	Demand 2038(ccf)	Demand 2039(ccf)	Demand 2040(ccf)
Resident	1,591,249	1,595,227	1,599,215	1,603,213	1,607,221	1,611,239	1,615,267	1,619,305	1,623,354	1,627,412
Multi- Residential	239,646	242,641	245,674	248,745	251,855	255,003	258,190	261,418	264,686	267,994
Commercial	1,685,561	1,696,719	1,707,952	1,719,258	1,730,640	1,742,097	1,753,629	1,765,238	1,776,924	1,788,688
Industrial	343,418	344,864	346,316	347,774	349,238	350,708	352,185	353,667	355,156	356,651
Government	176,431	176,803	177,176	177,550	177,925	178,300	178,676	179,053	179,431	179,810
Other	11,207	11,255	11,302	11,350	11,397	11,445	11,494	11,542	11,591	11,639
Unaccounted	171,961	172,502	173,045	173,590	174,138	174,688	175,240	175,794	176,351	176,909
Total	4,219,473	4,240,011	4,260,680	4,281,480	4,302,413	4,323,480	4,344,681	4,366,018	4,387,492	4,409,104

Customer Type	Demand 2031(AF)	Demand 2032(AF)	Demand 2033(AF)	Demand 2034(AF)	Demand 2035(AF)	Demand 2036(AF)	Demand 2037(AF)	Demand 2038(AF)	Demand 2039(AF)	Demand 2040(AF)
Resident	3,653	3,662	3,671	3,680	3,690	3,699	3,708	3,717	3,727	3,736
Multi- Residential	550	557	564	571	578	585	593	600	608	615
Commercial	3,870	3,895	3,921	3,947	3,973	3,999	4,026	4,052	4,079	4,106
Industrial	788	792	795	798	802	805	809	812	815	819
Government	405	406	407	408	408	409	410	411	412	413
Other	26	26	26	26	26	26	26	26	27	27
Unaccounted	395	396	397	399	400	401	402	404	405	406
Total	9,687	9,734	9,781	9,829	9,877	9,925	9,974	10,023	10,072	10,122

California Water Service Company - South San Francisco District Water Supply and Demand Analysis and Projections

Scenario #3: Based on Maintaining Growth at the 10-Year Average Annual Growth and Low Demand per Service for each Customer Class.
 5-Year Average High

Summary of Historical Growth Rate from Worksheet 2			
Customer Type	10 Yr. Avg. Historical Growth Rate	Individual Growth Rate Selected	Notes
Single Family Residential	0.425%	0.250%	Growth rate reduced to account for District build out conditions
Multi Family Residential	0.067%	1.250%	Growth rate increase to account of increase in densification
Commercial	0.662%	0.662%	Historical growth rate used
Industrial	-1.708%	0.421%	Overall growth rate used
Government	0.211%	0.211%	Historical growth rate used
Other	-2.749%	0.421%	Overall growth rate used
Overall	0.421%	0.313%	

Summary of Average Demand per Service from Worksheets 5 and 6									
Demand/Serv. Units	Residential	Multi-Residential		Commercial	Industrial	Government	Total Other	Unaccounted Total Serv.	Combined Demand/Serv.
		(service)	(unit)						
Gal/Service/Yr	89,107	1,024,544	62,889	690,885	4,093,715	741,141	1,119,256	11,156	201,209
AF/Service/Yr	0.273	3.144	0.193	2.120	12.563	2.274	3.435	0.034	0.617
Gal/Service/Day	244	2,807	172	1,893	11,216	2,031	3,066	31	551

California Water Service Company - South San Francisco District Water Supply and Demand Analysis and Projections

Worksheet 12

30-year projection Summary

Scenario #3: Based on Maintaining Growth at the

-
- 10-Year
-
-
- 5-Year

Average Annual Growth and

 Low Average High

Demand per Service for each Customer Class.

Customer Type	Projected Services 2010	Projected Services 2015	Projected Services 2020	Projected Services 2025	Projected Services 2030	Projected Services 2035	Projected Services 2040	Services projected to be added from 2010 - 2040
Single Family Residential	13,830	14,004	14,180	14,358	14,538	14,721	14,906	1,076
Multi Family Residential	154	164	174	185	197	210	223	70
Commercial	1,926	1,990	2,057	2,126	2,197	2,271	2,347	422
Industrial	63	65	66	67	69	70	72	8
Government	219	222	224	227	229	231	234	14
Other	16	16	17	17	17	18	18	2
Total	16,208	16,461	16,718	16,980	17,248	17,521	17,800	1,592

Customer Type	Projected Demand 2010 (ccf)	Projected Demand 2015 (ccf)	Projected Demand 2020 (ccf)	Projected Demand 2025 (ccf)	Projected Demand 2030 (ccf)	Projected Demand 2035 (ccf)	Projected Demand 2040 (ccf)	Projected demand to be added from 2010 - 2040 (ccf)
Single Family Residential	1,647,401	1,668,097	1,689,052	1,710,271	1,731,757	1,753,512	1,775,541	128,140
Multi Family Residential	210,783	224,290	238,663	253,958	270,232	287,549	305,975	95,192
Commercial	1,778,496	1,838,148	1,899,802	1,963,524	2,029,382	2,097,450	2,167,801	389,306
Industrial	346,218	353,567	361,073	368,737	376,565	384,559	392,722	46,505
Government	217,434	219,737	222,065	224,418	226,796	229,198	231,627	14,193
Other	24,040	24,551	25,072	25,604	26,148	26,703	27,269	3,229
Unaccounted	241,725	245,486	249,323	253,236	257,229	261,304	265,464	23,739
Total	4,466,096	4,573,877	4,685,050	4,799,748	4,918,109	5,040,276	5,166,400	700,304

Customer Type	Projected Demand 2010 (AF)	Projected Demand 2015 (AF)	Projected Demand 2020 (AF)	Projected Demand 2025 (AF)	Projected Demand 2030 (AF)	Projected Demand 2035 (AF)	Projected Demand 2040 (AF)	Projected demand to be added from 2010 - 2040 (AF)
Single Family Residential	3,782	3,829	3,878	3,926	3,976	4,026	4,076	294
Multi Family Residential	484	515	548	583	620	660	702	219
Commercial	4,083	4,220	4,361	4,508	4,659	4,815	4,977	894
Industrial	795	812	829	847	864	883	902	107
Government	499	504	510	515	521	526	532	33
Other	55	56	58	59	60	61	63	7
Unaccounted	555	564	572	581	591	600	609	54
Total	10,253	10,500	10,755	11,019	11,291	11,571	11,861	1,608

California Water Service Company - South San Francisco District
Water Supply and Demand Analysis and Projections

Scenario #3: Based on Maintaining Growth at the

- 10-Year
 5-Year

Average Annual Growth and

- Low
 Average
 High

2000's Projections

Demand per Service for each Customer Class.

Customer Type	Actual Services 2001	Actual Services 2002	Actual Services 2003	Actual Services 2004	Actual Services 2005	Actual Services 2006	Actual Services 2007	Actual Services 2008	Actual Services 2009	Projected Services 2010
Resident	13,465	13,534	13,532	13,787	13,829	13,829	13,838	13,826	13,796	13,830
Multi- Residential	151	151	150	151	151	151	151	152	152	154
Commercial	1,837	1,858	1,864	1,888	1,879	1,891	1,905	1,914	1,913	1,926
Industrial	74	72	71	68	68	69	66	66	63	63
Government	219	218	219	220	221	223	226	233	219	219
Other	69	59	26	26	24	27	27	27	16	16
Total	15,815	15,892	15,862	16,140	16,172	16,190	16,213	16,218	16,159	16,208

Customer Type	Demand 2001(ccf)	Demand 2002(ccf)	Demand 2003(ccf)	Demand 2004(ccf)	Demand 2005(ccf)	Demand 2006(ccf)	Demand 2007(ccf)	Demand 2008(ccf)	Demand 2009(ccf)	Demand 2010(ccf)
Resident	1,603,924	1,612,143	1,611,905	1,642,310	1,647,234	1,647,283	1,648,355	1,646,926	1,643,293	1,647,401
Multi- Residential	206,811	206,811	205,442	206,811	206,811	206,811	206,811	208,181	208,181	210,783
Commercial	1,696,608	1,716,003	1,721,544	1,743,710	1,735,398	1,746,481	1,759,411	1,767,723	1,766,799	1,778,496
Industrial	404,963	394,018	388,546	372,128	372,128	377,601	361,184	361,184	344,766	346,218
Government	216,976	215,985	216,976	217,967	218,957	220,939	223,911	230,846	216,976	217,434
Other	103,239	88,277	38,902	38,902	35,909	40,398	40,398	40,398	23,940	24,040
Unaccounted	235,859	237,007	236,560	240,709	241,177	241,451	241,794	241,869	240,981	241,725
Total	4,468,380	4,470,245	4,419,874	4,462,537	4,457,614	4,480,964	4,481,864	4,497,126	4,444,936	4,466,096

Customer Type	Demand 2001(AF)	Demand 2002(AF)	Demand 2003(AF)	Demand 2004(AF)	Demand 2005(AF)	Demand 2006(AF)	Demand 2007(AF)	Demand 2008(AF)	Demand 2009(AF)	Demand 2010(AF)
Resident	3,682	3,701	3,700	3,770	3,782	3,782	3,784	3,781	3,773	3,782
Multi- Residential	475	475	472	475	475	475	475	478	478	484
Commercial	3,895	3,939	3,952	4,003	3,984	4,009	4,039	4,058	4,056	4,083
Industrial	930	905	892	854	854	867	829	829	791	795
Government	498	496	498	500	503	507	514	530	498	499
Other	237	203	89	89	82	93	93	93	55	55
Unaccounted	541	544	543	553	554	554	555	555	553	555
Total	10,258	10,262	10,147	10,245	10,233	10,287	10,289	10,324	10,204	10,253

**California Water Service Company - South San Francisco District
Water Supply and Demand Analysis and Projections**

Scenario #3: Based on Maintaining Growth at the 10-Year 5-Year Average Annual Growth and Low Average High Demand per Service for each Customer Class.

2010's Projections

Customer Type	Projected Services 2011	Projected Services 2012	Projected Services 2013	Projected Services 2014	Projected Services 2015	Projected Services 2016	Projected Services 2017	Projected Services 2018	Projected Services 2019	Projected Services 2020
Resident	13,865	13,899	13,934	13,969	14,004	14,039	14,074	14,109	14,144	14,180
Multi- Residential	156	158	160	162	164	166	168	170	172	174
Commercial	1,938	1,951	1,964	1,977	1,990	2,003	2,017	2,030	2,043	2,057
Industrial	64	64	64	64	65	65	65	65	66	66
Government	220	220	221	221	222	222	223	223	224	224
Other	16	16	16	16	16	16	17	17	17	17
Total	16,258	16,309	16,359	16,410	16,461	16,512	16,563	16,614	16,666	16,718

Customer Type	Demand 2011(ccf)	Demand 2012(ccf)	Demand 2013(ccf)	Demand 2014(ccf)	Demand 2015(ccf)	Demand 2016(ccf)	Demand 2017(ccf)	Demand 2018(ccf)	Demand 2019(ccf)	Demand 2020(ccf)
Resident	1,651,519	1,655,648	1,659,787	1,663,937	1,668,097	1,672,267	1,676,448	1,680,639	1,684,840	1,689,052
Multi- Residential	213,418	216,086	218,787	221,521	224,290	227,094	229,933	232,807	235,717	238,663
Commercial	1,790,269	1,802,121	1,814,051	1,826,060	1,838,148	1,850,317	1,862,566	1,874,896	1,887,308	1,899,802
Industrial	347,675	349,139	350,609	352,085	353,567	355,056	356,550	358,051	359,559	361,073
Government	217,892	218,352	218,813	219,275	219,737	220,201	220,666	221,131	221,598	222,065
Other	24,142	24,243	24,345	24,448	24,551	24,654	24,758	24,862	24,967	25,072
Unaccounted	242,471	243,221	243,973	244,728	245,486	246,247	247,012	247,779	248,549	249,323
Total	4,487,387	4,508,809	4,530,365	4,552,053	4,573,877	4,595,836	4,617,932	4,640,165	4,662,538	4,685,050

Customer Type	Demand 2011(AF)	Demand 2012(AF)	Demand 2013(AF)	Demand 2014(AF)	Demand 2015(AF)	Demand 2016(AF)	Demand 2017(AF)	Demand 2018(AF)	Demand 2019(AF)	Demand 2020(AF)
Resident	3,791	3,801	3,810	3,820	3,829	3,839	3,849	3,858	3,868	3,878
Multi- Residential	490	496	502	509	515	521	528	534	541	548
Commercial	4,110	4,137	4,165	4,192	4,220	4,248	4,276	4,304	4,333	4,361
Industrial	798	802	805	808	812	815	819	822	825	829
Government	500	501	502	503	504	506	507	508	509	510
Other	55	56	56	56	56	57	57	57	57	58
Unaccounted	557	558	560	562	564	565	567	569	571	572
Total	10,302	10,351	10,400	10,450	10,500	10,551	10,601	10,652	10,704	10,755

**California Water Service Company - South San Francisco District
Water Supply and Demand Analysis and Projections**

Scenario #3: Based on Maintaining Growth at the

- 10-Year
- 5-Year

Average Annual Growth and

- Low
- Average
- High

2020's Projections

Demand per Service for each Customer Class.

Customer Type	Projected Services 2021	Projected Services 2022	Projected Services 2023	Projected Services 2024	Projected Services 2025	Projected Services 2026	Projected Services 2027	Projected Services 2028	Projected Services 2029	Projected Services 2030
Resident	14,215	14,251	14,286	14,322	14,358	14,394	14,430	14,466	14,502	14,538
Multi- Residential	176	179	181	183	185	188	190	192	195	197
Commercial	2,071	2,084	2,098	2,112	2,126	2,140	2,154	2,169	2,183	2,197
Industrial	66	67	67	67	67	68	68	68	69	69
Government	225	225	226	226	227	227	227	228	228	229
Other	17	17	17	17	17	17	17	17	17	17
Total	16,770	16,822	16,875	16,927	16,980	17,033	17,087	17,140	17,194	17,248

Customer Type	Demand 2021(ccf)	Demand 2022(ccf)	Demand 2023(ccf)	Demand 2024(ccf)	Demand 2025(ccf)	Demand 2026(ccf)	Demand 2027(ccf)	Demand 2028(ccf)	Demand 2029(ccf)	Demand 2030(ccf)
Resident	1,693,275	1,697,508	1,701,752	1,706,006	1,710,271	1,714,547	1,718,833	1,723,131	1,727,438	1,731,757
Multi- Residential	241,647	244,667	247,726	250,822	253,958	257,132	260,346	263,600	266,895	270,232
Commercial	1,912,379	1,925,039	1,937,782	1,950,611	1,963,524	1,976,522	1,989,607	2,002,778	2,016,036	2,029,382
Industrial	362,593	364,119	365,652	367,192	368,737	370,290	371,849	373,414	374,986	376,565
Government	222,534	223,003	223,474	223,946	224,418	224,892	225,366	225,842	226,318	226,796
Other	25,177	25,283	25,390	25,497	25,604	25,712	25,820	25,929	26,038	26,148
Unaccounted	250,099	250,879	251,661	252,447	253,236	254,028	254,824	255,623	256,424	257,229
Total	4,707,704	4,730,499	4,753,437	4,776,520	4,799,748	4,823,123	4,846,645	4,870,316	4,894,137	4,918,109

Customer Type	Demand 2021(AF)	Demand 2022(AF)	Demand 2023(AF)	Demand 2024(AF)	Demand 2025(AF)	Demand 2026(AF)	Demand 2027(AF)	Demand 2028(AF)	Demand 2029(AF)	Demand 2030(AF)
Resident	3,887	3,897	3,907	3,916	3,926	3,936	3,946	3,956	3,966	3,976
Multi- Residential	555	562	569	576	583	590	598	605	613	620
Commercial	4,390	4,419	4,449	4,478	4,508	4,538	4,568	4,598	4,628	4,659
Industrial	832	836	839	843	847	850	854	857	861	864
Government	511	512	513	514	515	516	517	518	520	521
Other	58	58	58	59	59	59	59	60	60	60
Unaccounted	574	576	578	580	581	583	585	587	589	591
Total	10,807	10,860	10,912	10,965	11,019	11,072	11,126	11,181	11,235	11,291

**California Water Service Company - South San Francisco District
Water Supply and Demand Analysis and Projections**

Scenario #3: Based on Maintaining Growth at the 10-Year Average Annual Growth and Low Demand per Service for each Customer Class.
 5-Year Average High

2030's Projections

Customer Type	Projected Services 2031	Projected Services 2032	Projected Services 2033	Projected Services 2034	Projected Services 2035	Projected Services 2036	Projected Services 2037	Projected Services 2038	Projected Services 2039	Projected Services 2040
Resident	14,575	14,611	14,647	14,684	14,721	14,758	14,794	14,831	14,869	14,906
Multi- Residential	200	202	205	207	210	213	215	218	221	223
Commercial	2,212	2,227	2,241	2,256	2,271	2,286	2,301	2,316	2,332	2,347
Industrial	69	69	70	70	70	71	71	71	71	72
Government	229	230	230	231	231	232	232	233	233	234
Other	18	18	18	18	18	18	18	18	18	18
Total	17,302	17,357	17,411	17,466	17,521	17,577	17,632	17,688	17,744	17,800

Customer Type	Demand 2031(ccf)	Demand 2032(ccf)	Demand 2033(ccf)	Demand 2034(ccf)	Demand 2035(ccf)	Demand 2036(ccf)	Demand 2037(ccf)	Demand 2038(ccf)	Demand 2039(ccf)	Demand 2040(ccf)
Resident	1,736,086	1,740,427	1,744,778	1,749,140	1,753,512	1,757,896	1,762,291	1,766,697	1,771,113	1,775,541
Multi- Residential	273,610	277,030	280,493	283,999	287,549	291,143	294,782	298,467	302,198	305,975
Commercial	2,042,817	2,056,340	2,069,953	2,083,656	2,097,450	2,111,335	2,125,312	2,139,382	2,153,545	2,167,801
Industrial	378,150	379,742	381,341	382,946	384,559	386,178	387,803	389,436	391,076	392,722
Government	227,274	227,754	228,234	228,716	229,198	229,682	230,167	230,652	231,139	231,627
Other	26,258	26,368	26,479	26,591	26,703	26,815	26,928	27,041	27,155	27,269
Unaccounted	258,038	258,850	259,665	260,483	261,304	262,129	262,958	263,790	264,625	265,464
Total	4,942,233	4,966,510	4,990,943	5,015,531	5,040,276	5,065,179	5,090,242	5,115,465	5,140,851	5,166,400

Customer Type	Demand 2031(AF)	Demand 2032(AF)	Demand 2033(AF)	Demand 2034(AF)	Demand 2035(AF)	Demand 2036(AF)	Demand 2037(AF)	Demand 2038(AF)	Demand 2039(AF)	Demand 2040(AF)
Resident	3,986	3,995	4,005	4,015	4,026	4,036	4,046	4,056	4,066	4,076
Multi- Residential	628	636	644	652	660	668	677	685	694	702
Commercial	4,690	4,721	4,752	4,783	4,815	4,847	4,879	4,911	4,944	4,977
Industrial	868	872	875	879	883	887	890	894	898	902
Government	522	523	524	525	526	527	528	530	531	532
Other	60	61	61	61	61	62	62	62	62	63
Unaccounted	592	594	596	598	600	602	604	606	607	609
Total	11,346	11,402	11,458	11,514	11,571	11,628	11,686	11,744	11,802	11,861

California Water Service Company - South San Francisco District

Water Supply and Demand Analysis and Projections

Worksheet 13

Scenario #4: Based on Maintaining Growth at the 10-Year Average Annual Growth
 5-Year

Summary of Historical Growth Rate from Worksheet 2			
Customer Type	5 Yr. Avg. Historical Growth Rate	Individual Growth Rate Selected	Notes
Single Family Residential	0.012%	0.012%	Historic growth rate used
Multi Family Residential	0.132%	0.132%	Historic growth rate used
Commercial	0.264%	0.020%	Overall growth rate used
Industrial	-1.486%	0.020%	Overall growth rate used
Government	-0.042%	0.020%	Overall growth rate used
Other	-7.186%	0.020%	Overall growth rate used
Overall	0.020%	0.014%	

California Water Service Company - South San Francisco District
Water Supply and Demand Analysis and Projections

Worksheet 13

30-year projection Summary

Scenario #4: Based on Maintaining Growth at the 10-Year
 5-Year Average Annual Growth

Customer Type	Projected Services 2010	Projected Services 2015	Projected Services 2020	Projected Services 2025	Projected Services 2030	Projected Services 2035	Projected Services 2040	Services projected to be added from 2010 - 2040
Single Family Residential	13,797	13,805	13,814	13,822	13,830	13,839	13,847	50
Multi Family Residential	152	153	154	155	156	157	158	6
Commercial	1,913	1,915	1,917	1,919	1,921	1,923	1,925	12
Industrial	63	63	63	63	63	63	63	0
Government	219	219	219	220	220	220	220	1
Other	16	16	16	16	16	16	16	0
Total	16,161	16,172	16,184	16,195	16,207	16,218	16,230	69

California Water Service Company - South San Francisco District

Water Supply and Demand Analysis and Projections

Worksheet 13

2000's Projections

Scenario #4: Based on Maintaining Growth at the

 10-Year 5-Year

Average Annual Growth

Customer Type	Actual Services 2001	Actual Services 2002	Actual Services 2003	Actual Services 2004	Actual Services 2005	Actual Services 2006	Actual Services 2007	Actual Services 2008	Actual Services 2009	Projected Services 2010
Resident	13,465	13,534	13,532	13,787	13,829	13,829	13,838	13,826	13,796	13,797
Multi- Residential	151	151	150	151	151	151	151	152	152	152
Commercial	1,837	1,858	1,864	1,888	1,879	1,891	1,905	1,914	1,913	1,913
Industrial	74	72	71	68	68	69	66	66	63	63
Government	219	218	219	220	221	223	226	233	219	219
Other	69	59	26	26	24	27	27	27	16	16
Total	15,815	15,892	15,862	16,140	16,172	16,190	16,213	16,218	16,159	16,161

2010's Projections

Customer Type	Projected Services 2011	Projected Services 2012	Projected Services 2013	Projected Services 2014	Projected Services 2015	Projected Services 2016	Projected Services 2017	Projected Services 2018	Projected Services 2019	Projected Services 2020
Resident	13,799	13,800	13,802	13,804	13,805	13,807	13,809	13,810	13,812	13,814
Multi- Residential	152	153	153	153	153	153	154	154	154	154
Commercial	1,914	1,914	1,915	1,915	1,915	1,916	1,916	1,916	1,917	1,917
Industrial	63	63	63	63	63	63	63	63	63	63
Government	219	219	219	219	219	219	219	219	219	219
Other	16	16	16	16	16	16	16	16	16	16
Total	16,163	16,165	16,168	16,170	16,172	16,175	16,177	16,179	16,182	16,184

California Water Service Company - South San Francisco District

Water Supply and Demand Analysis and Projections

Worksheet 13

2020's Projections

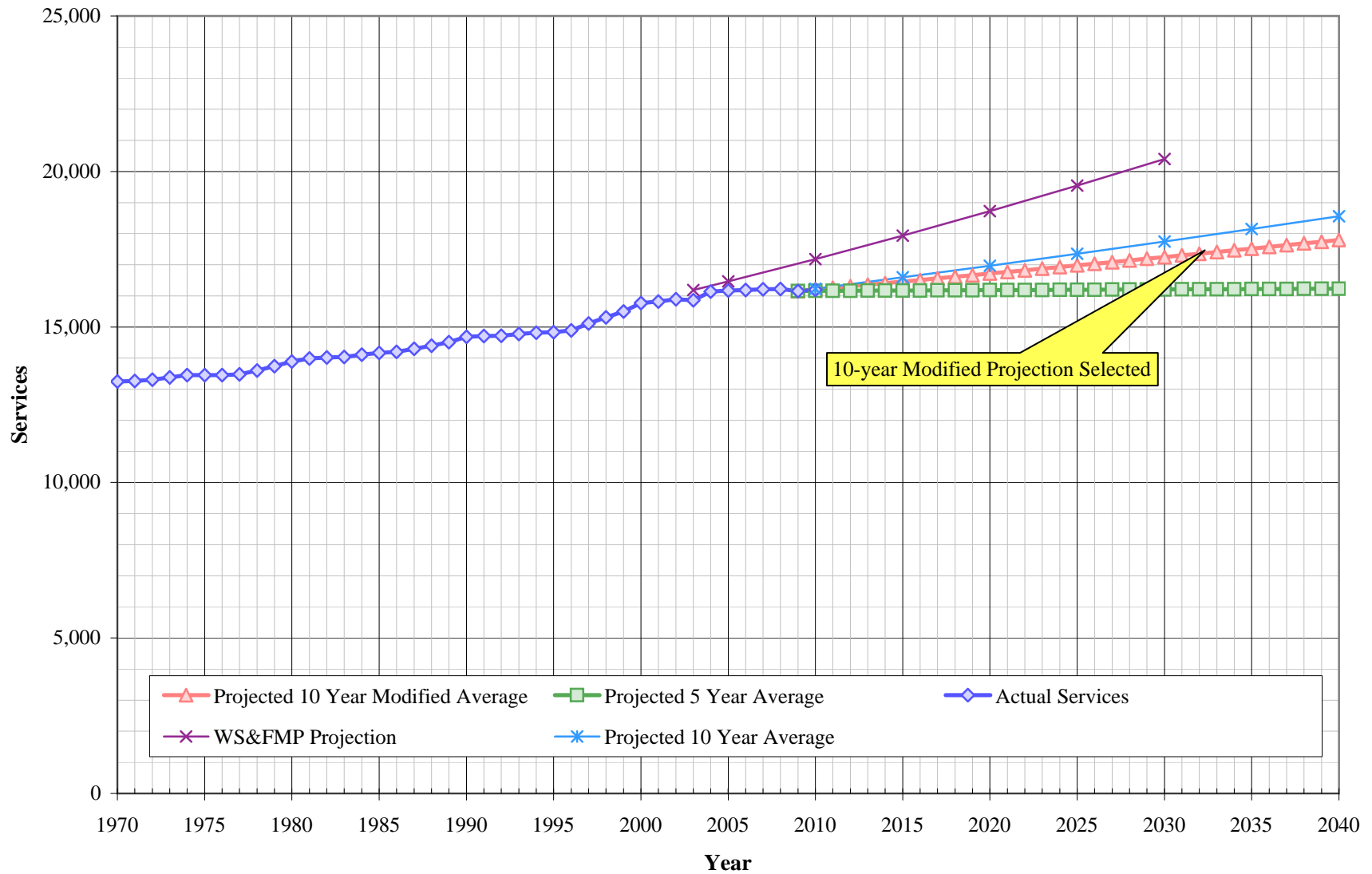
Scenario #4: Based on Maintaining Growth at the 10-Year Average Annual Growth
 5-Year

Customer Type	Projected Services 2021	Projected Services 2022	Projected Services 2023	Projected Services 2024	Projected Services 2025	Projected Services 2026	Projected Services 2027	Projected Services 2028	Projected Services 2029	Projected Services 2030
Resident	13,815	13,817	13,819	13,820	13,822	13,824	13,825	13,827	13,829	13,830
Multi- Residential	154	155	155	155	155	155	156	156	156	156
Commercial	1,918	1,918	1,918	1,919	1,919	1,920	1,920	1,920	1,921	1,921
Industrial	63	63	63	63	63	63	63	63	63	63
Government	220	220	220	220	220	220	220	220	220	220
Other	16	16	16	16	16	16	16	16	16	16
Total	16,186	16,188	16,191	16,193	16,195	16,198	16,200	16,202	16,205	16,207

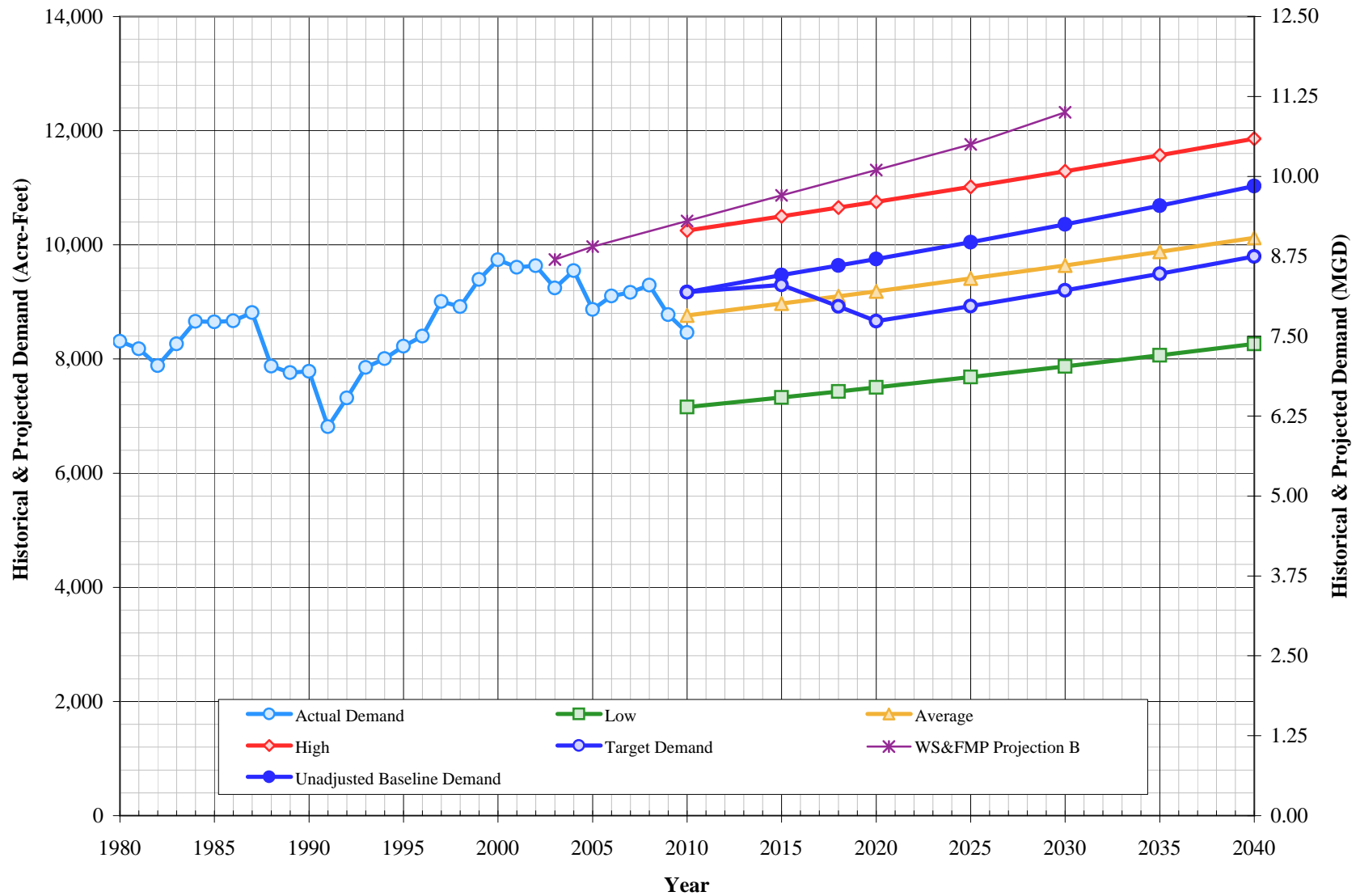
2030's Projections

Customer Type	Projected Services 2031	Projected Services 2032	Projected Services 2033	Projected Services 2034	Projected Services 2035	Projected Services 2036	Projected Services 2037	Projected Services 2038	Projected Services 2039	Projected Services 2040
Resident	13,832	13,834	13,835	13,837	13,839	13,840	13,842	13,844	13,845	13,847
Multi- Residential	156	157	157	157	157	158	158	158	158	158
Commercial	1,921	1,922	1,922	1,923	1,923	1,923	1,924	1,924	1,925	1,925
Industrial	63	63	63	63	63	63	63	63	63	63
Government	220	220	220	220	220	220	220	220	220	220
Other	16	16	16	16	16	16	16	16	16	16
Total	16,209	16,212	16,214	16,216	16,218	16,221	16,223	16,225	16,228	16,230

South San Francisco Historical & Projected Services



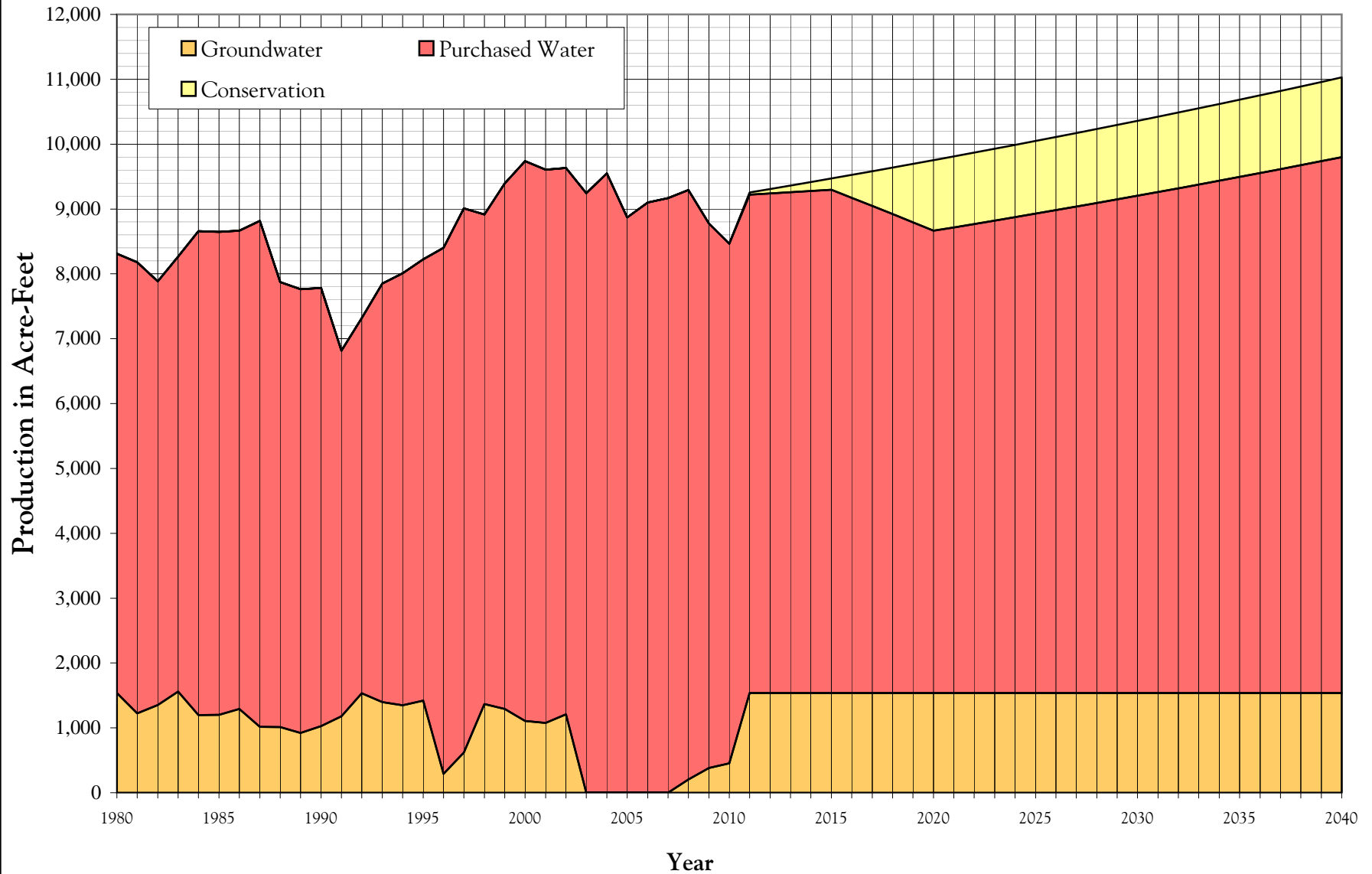
South San Francisco Historic & Projected Demand



California Water Service Company - South San Francisco District
Water Supply and Demand Analysis and Projections

Projected Demand		Acre-Feet per Year					MGD					
Year	Actual Demand	Projection			Unadjusted Baseline Demand	Target Demand	Actual Demand	Projection			Unadjusted Baseline Demand	Target Demand
		Low	Average	High				Low	Average	High		
1980	8,311						7.42					
1981	8,179						7.30					
1982	7,883						7.04					
1983	8,264						7.38					
1984	8,658						7.73					
1985	8,649						7.72					
1986	8,666						7.74					
1987	8,816						7.87					
1988	7,873						7.03					
1989	7,763						6.93					
1990	7,782						6.95					
1991	6,816						6.08					
1992	7,317						6.53					
1993	7,851						7.01					
1994	8,008						7.15					
1995	8,226						7.34					
1996	8,403						7.50					
1997	9,008						8.04					
1998	8,917						7.96					
1999	9,394						8.39					
2000	9,738						8.69					
2001	9,606						8.58					
2002	9,633						8.60					
2003	9,245						8.25					
2004	9,549						8.53					
2005	8,869						7.92					
2006	9,101						8.13					
2007	9,169						8.19					
2008	9,292						8.30					
2009	8,777						7.84					
2010	8,465	7,158	8,762	10,253	9,170	9,170	7.56	6.39	7.82	9.15	8.19	8.19
2015		7,328	8,971	10,500	9,471	9,297		6.54	8.01	9.37	8.45	8.30
2018		7,433	9,100	10,652	9,638	8,923		6.64	8.12	9.51	8.60	7.97
2020		7,504	9,187	10,755	9,752	8,665		6.70	8.20	9.60	8.71	7.74
2025		7,685	9,410	11,019	10,048	8,928		6.86	8.40	9.84	8.97	7.97
2030		7,872	9,640	11,291	10,359	9,204		7.03	8.61	10.08	9.25	8.22
2035		8,064	9,877	11,571	10,686	9,494		7.20	8.82	10.33	9.54	8.48
2040		8,263	10,122	11,861	11,029	9,799		7.38	9.04	10.59	9.85	8.75

South San Francisco Historical and Projected Distribution of Demand by Source

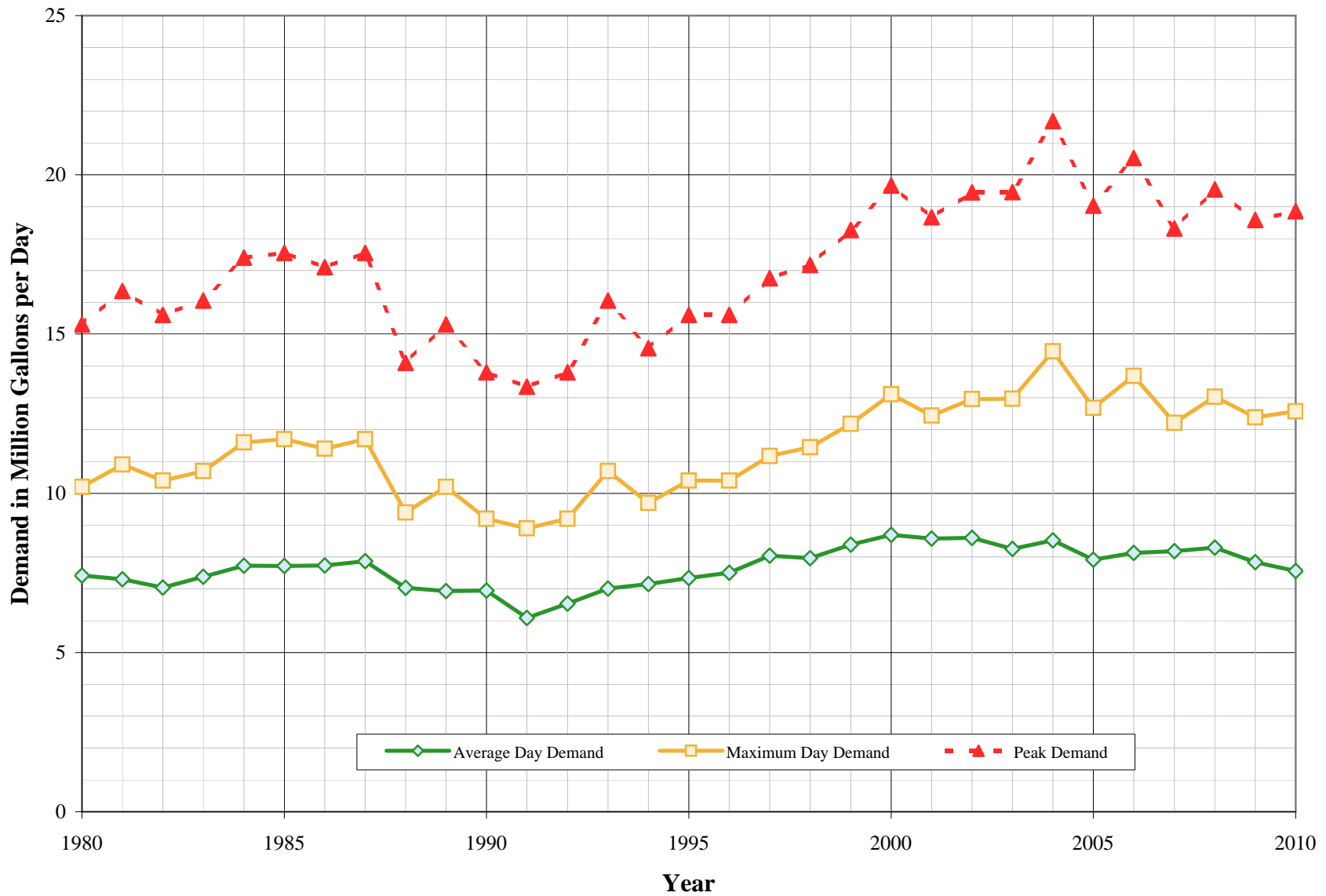


California Water Service Company - South San Francisco District
Water Supply and Demand Analysis and Projections
Historical and Projected Distribution of Demand by Source

Year	Purchased Water		Groundwater		Conservation		Total	
	kGal	AF	kGal	AF	kGal	AF	kGal	AF
1980	2,206,952	6,773	501,102	1,538			2,708,054	8,311
1981	2,267,031	6,957	398,193	1,222			2,665,224	8,179
1982	2,128,443	6,532	440,338	1,351			2,568,781	7,883
1983	2,184,435	6,704	508,395	1,560			2,692,830	8,264
1984	2,430,837	7,460	390,227	1,198			2,821,064	8,658
1985	2,426,979	7,448	391,202	1,201			2,818,181	8,649
1986	2,403,051	7,375	420,831	1,292			2,823,882	8,666
1987	2,540,987	7,798	331,539	1,018			2,872,526	8,816
1988	2,235,846	6,862	329,605	1,012			2,565,451	7,873
1989	2,229,647	6,843	299,939	921			2,529,586	7,763
1990	2,200,774	6,754	335,109	1,028			2,535,883	7,782
1991	1,836,851	5,637	384,094	1,179			2,220,945	6,816
1992	1,885,039	5,785	499,203	1,532			2,384,242	7,317
1993	2,103,422	6,455	454,721	1,396			2,558,143	7,851
1994	2,170,365	6,661	439,188	1,348			2,609,553	8,008
1995	2,217,468	6,805	462,867	1,421			2,680,335	8,226
1996	2,643,096	8,111	94,993	292			2,738,089	8,403
1997	2,733,713	8,389	201,546	619			2,935,259	9,008
1998	2,459,533	7,548	445,978	1,369			2,905,511	8,917
1999	2,639,750	8,101	421,272	1,293			3,061,022	9,394
2000	2,812,692	8,632	360,375	1,106			3,173,067	9,738
2001	2,779,696	8,531	350,522	1,076			3,130,218	9,606
2002	2,745,611	8,426	393,192	1,207			3,138,803	9,633
2003	3,012,335	9,245	0	0			3,012,335	9,245
2004	3,111,642	9,549	0	0			3,111,642	9,549
2005	2,889,923	8,869	0	0			2,889,923	8,869
2006	2,965,693	9,101	0	0			2,965,693	9,101
2007	2,987,752	9,169	0	0			2,987,752	9,169
2008	2,960,828	9,086	66,999	206			3,027,827	9,292
2009	2,736,100	8,397	123,921	380			2,860,021	8,777
2010	2,610,935	8,013	147,416	452			2,758,351	8,465
2011	2,504,400	7,686	500,181	1,535	11,069	34	3,015,655	9,255
2012	2,510,543	7,705	500,181	1,535	22,265	68	3,032,994	9,308
2013	2,516,724	7,724	500,181	1,535	33,590	103	3,050,500	9,362
2014	2,522,941	7,743	500,181	1,535	45,047	138	3,068,174	9,416
2015	2,529,196	7,762	500,181	1,535	56,636	174	3,086,018	9,471
2016	2,489,054	7,639	500,181	1,535	114,794	352	3,104,034	9,526
2017	2,448,405	7,514	500,181	1,535	173,633	533	3,122,224	9,582
2018	2,407,242	7,388	500,181	1,535	233,163	716	3,140,591	9,638
2019	2,365,556	7,260	500,181	1,535	293,394	900	3,159,135	9,695
2020	2,323,339	7,130	500,181	1,535	354,336	1,087	3,177,861	9,752
2021	2,340,139	7,182	500,181	1,535	356,444	1,094	3,196,768	9,811
2022	2,357,102	7,234	500,181	1,535	358,573	1,100	3,215,861	9,869
2023	2,374,232	7,286	500,181	1,535	360,722	1,107	3,235,140	9,928
2024	2,391,529	7,339	500,181	1,535	362,893	1,114	3,254,609	9,988
2025	2,408,997	7,393	500,181	1,535	365,085	1,120	3,274,268	10,048
2026	2,426,637	7,447	500,181	1,535	367,299	1,127	3,294,122	10,109
2027	2,444,450	7,502	500,181	1,535	369,534	1,134	3,314,171	10,171
2028	2,462,440	7,557	500,181	1,535	371,792	1,141	3,334,418	10,233
2029	2,480,608	7,613	500,181	1,535	374,072	1,148	3,354,866	10,296
2030	2,498,956	7,669	500,181	1,535	376,375	1,155	3,375,517	10,359
2031	2,517,487	7,726	500,181	1,535	378,700	1,162	3,396,373	10,423
2032	2,536,202	7,783	500,181	1,535	381,049	1,169	3,417,437	10,488
2033	2,555,104	7,841	500,181	1,535	383,421	1,177	3,438,711	10,553
2034	2,574,196	7,900	500,181	1,535	385,817	1,184	3,460,198	10,619
2035	2,593,478	7,959	500,181	1,535	388,237	1,191	3,481,901	10,686
2036	2,612,954	8,019	500,181	1,535	390,681	1,199	3,503,821	10,753
2037	2,632,626	8,079	500,181	1,535	393,149	1,207	3,525,961	10,821
2038	2,652,496	8,140	500,181	1,535	395,643	1,214	3,548,325	10,889
2039	2,672,567	8,202	500,181	1,535	398,162	1,222	3,570,915	10,959
2040	2,692,840	8,264	500,181	1,535	400,706	1,230	3,593,732	11,029

South San Francisco District

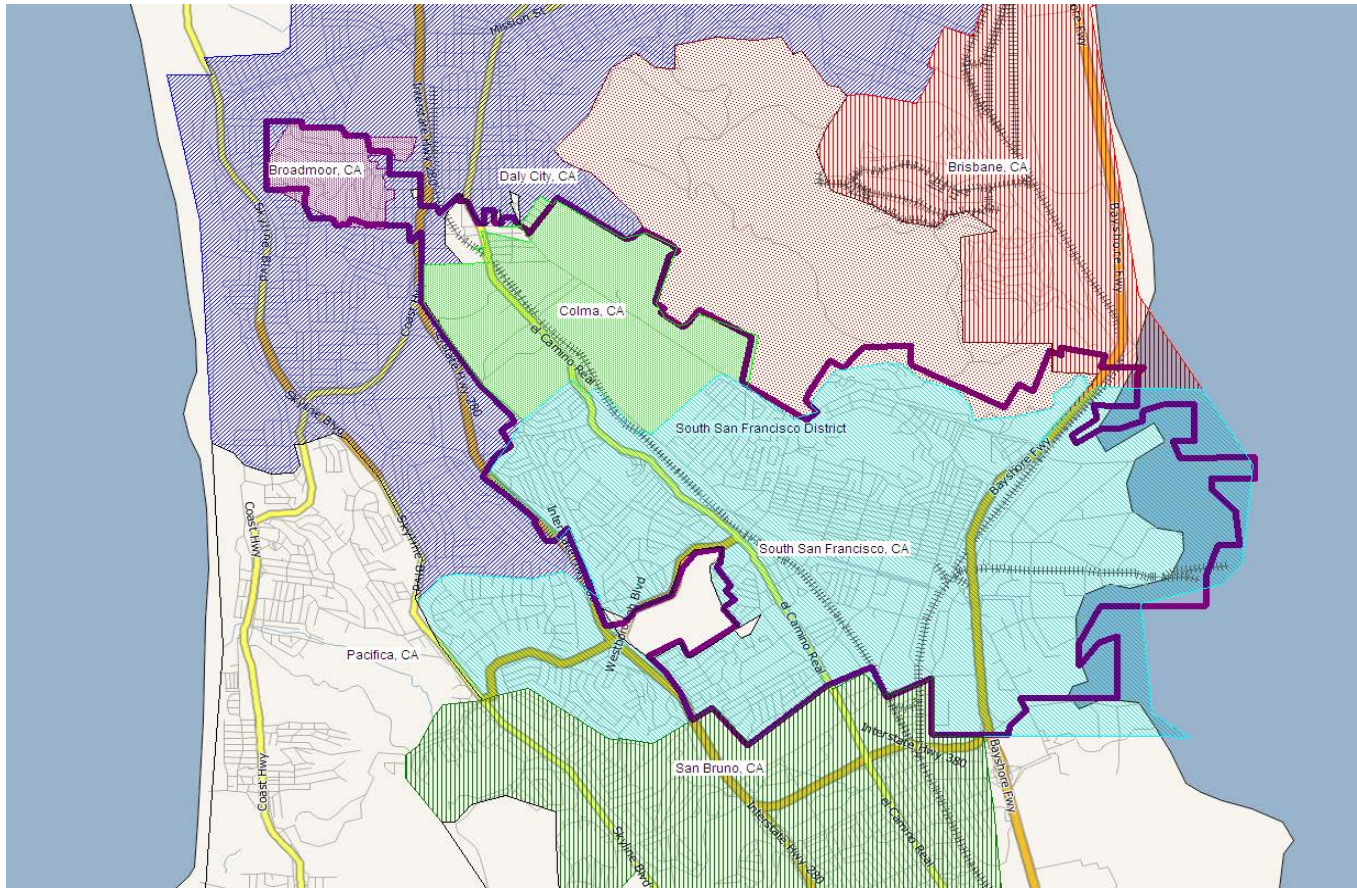
Average Day, Maximum Day, and Peak Demand



California Water Service Company - South San Francisco District
Water Supply and Demand Analysis and Projections
Historical and Projected Average Day, Maximum Day, and Peak Demand

Year	Historical Annual Demand		Average Day Demand		Maximum Day Demand		MDD ADD Ratio	Estimated Peak Hour Demand		PHD MDD Ratio	PHD ADD Ratio	Measured Peak Hour Demand		PHD MDD Ratio
	(AFY)	(MGY)	(MGD)	Per Service (GPD)	(MGD)	Per Service (GPD)		(MGD)	(GPM)			(MGD)	(GPM)	
1980	8,311	2,708	7.419	534	10.200	735	1.37	15.300	10,625	1.50	2.06			
1981	8,179	2,665	7.302	522	10.900	779	1.49	16.350	11,354	1.50	2.24			
1982	7,883	2,569	7.038	502	10.400	742	1.48	15.600	10,833	1.50	2.22			
1983	8,264	2,693	7.378	526	10.700	762	1.45	16.050	11,146	1.50	2.18			
1984	8,658	2,821	7.729	548	11.600	822	1.50	17.400	12,083	1.50	2.25			
1985	8,649	2,818	7.721	545	11.700	826	1.52	17.550	12,188	1.50	2.27			
1986	8,666	2,824	7.737	545	11.400	803	1.47	17.100	11,875	1.50	2.21			
1987	8,816	2,873	7.870	551	11.700	818	1.49	17.550	12,188	1.50	2.23			
1988	7,873	2,565	7.029	488	9.400	653	1.34	14.100	9,792	1.50	2.01			
1989	7,763	2,530	6.930	478	10.200	703	1.47	15.300	10,625	1.50	2.21			
1990	7,782	2,536	6.948	473	9.200	627	1.32	13.800	9,583	1.50	1.99			
1991	6,816	2,221	6.085	414	8.900	605	1.46	13.350	9,271	1.50	2.19			
1992	7,317	2,384	6.532	444	9.200	625	1.41	13.800	9,583	1.50	2.11			
1993	7,851	2,558	7.009	474	10.700	724	1.53	16.050	11,146	1.50	2.29			
1994	8,008	2,610	7.149	483	9.700	655	1.36	14.550	10,104	1.50	2.04			
1995	8,226	2,680	7.343	495	10.400	701	1.42	15.600	10,833	1.50	2.12			
1996	8,403	2,738	7.502	504	10.400	699	1.39	15.600	10,833	1.50	2.08			
1997	9,008	2,935	8.042	532	11.171	739	1.39	16.757	11,636	1.50	2.08			
1998	8,917	2,906	7.960	520	11.448	748	1.44	17.172	11,925	1.50	2.16			
1999	9,394	3,061	8.386	541	12.180	786	1.45	18.270	12,688	1.50	2.18			
2000	9,738	3,173	8.693	551	13.109	831	1.51	19.664	13,655	1.50	2.26			
2001	9,606	3,130	8.576	542	12.444	787	1.45	18.666	12,963	1.50	2.18			
2002	9,633	3,139	8.600	541	12.965	816	1.51	19.448	13,505	1.50	2.26			
2003	9,245	3,012	8.253	520	12.973	818	1.57	19.460	13,514	1.50	2.36			
2004	9,549	3,112	8.525	528	14.460	896	1.70	21.690	15,063	1.50	2.54			
2005	8,869	2,890	7.918	490	12.686	784	1.60	19.029	13,215	1.50	2.40			
2006	9,101	2,966	8.125	502	13.686	845	1.68	20.529	14,256	1.50	2.53			
2007	9,169	2,988	8.186	505	12.212	753	1.49	18.318	12,721	1.50	2.24			
2008	9,292	3,028	8.295	511	13.031	803	1.57	19.547	13,574	1.50	2.36			
2009	8,777	2,860	7.836	485	12.389	767	1.58	18.584	12,905	1.50	2.37			
2010	8,465	2,758	7.557	467	12.574	777	1.66	18.861	13,098	1.50	2.50			
5 year Average (2006-2010)			8.000	494	12.778	789	1.60	19.168	13,311	1.50	2.40			
10 year Average (2001-2010)			8.187	509	12.942	805	1.58	19.413	13,481	1.50	2.37			

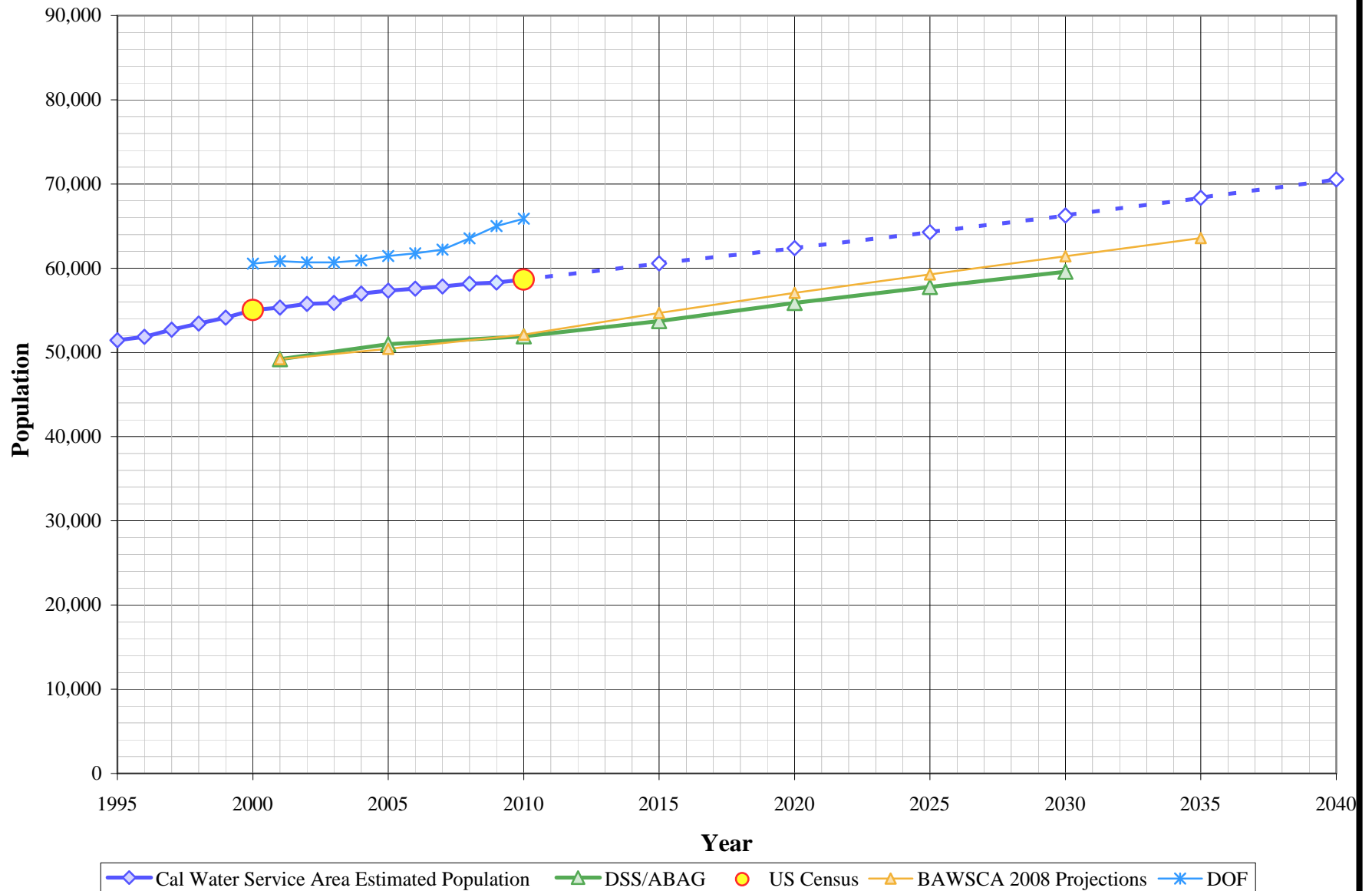
**California Water Service Company - South San Francisco District
Water Supply and Demand Analysis and Projections**



Year	US Census		Persons per Housing Unit	Census Blocks
	Population	Housing Units		
2000	120,632	49,466	2.439	458
2010	126,850	52,042	2.437	510
	105%	105%	100%	111%

MARPLOT disclaimer: The population and housing number given above are only rough estimates. They are based on the US Census Blocks. Although Census Blocks are polygons, MARPLOT uses the centroid, or center point, rather than the entire polygon. If a Census Block centroid is within any of the MARPLOT selected objects, the population and housing numbers for that block are tallied, even if only part of the block is within the selected object. It is possible for a block not be counted if its centroid is not within selected objects, even though part of the block is within the selected objects.

South San Francisco District Population Projections



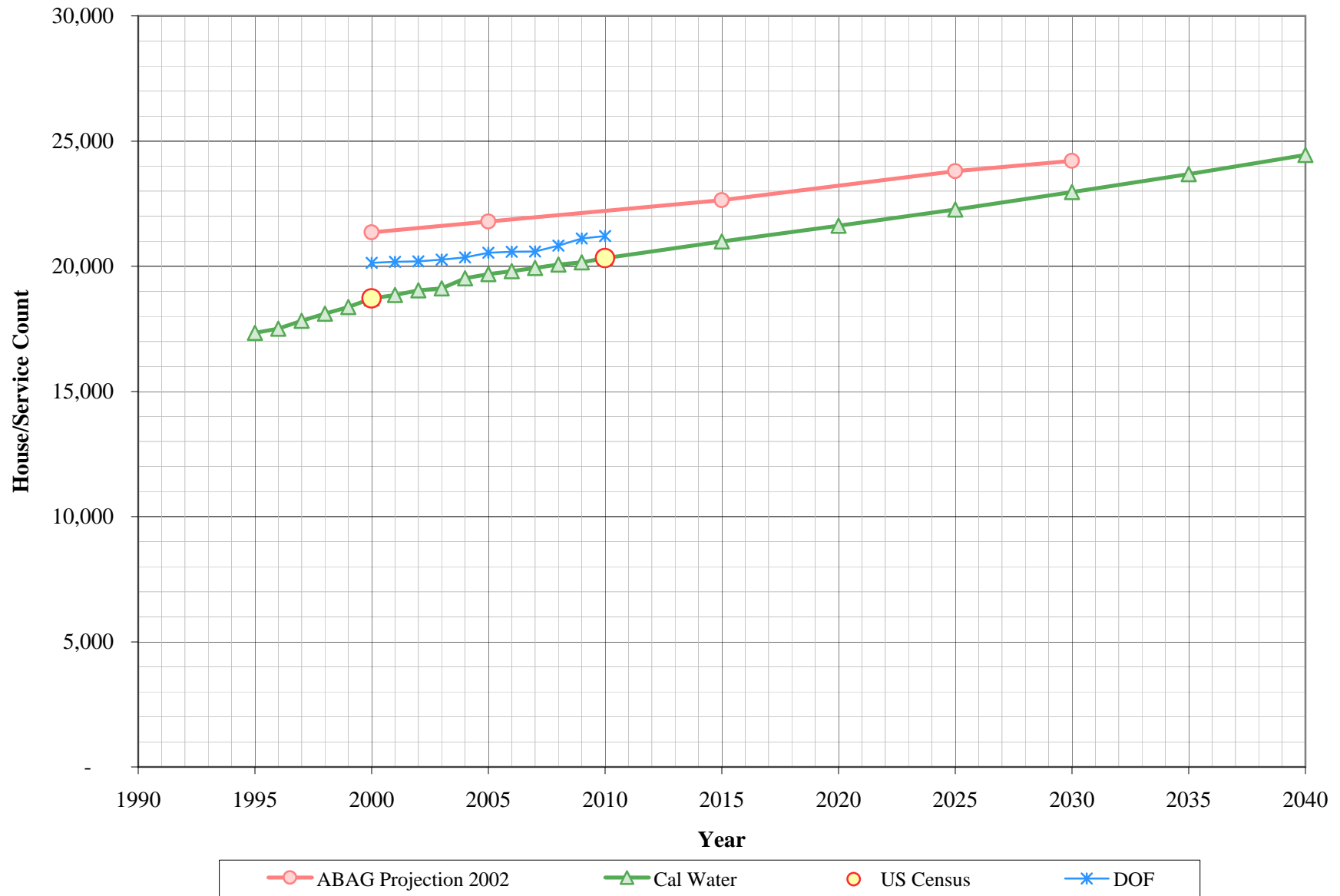
California Water Service Company - South San Francisco District

Water Supply and Demand Analysis and Projections

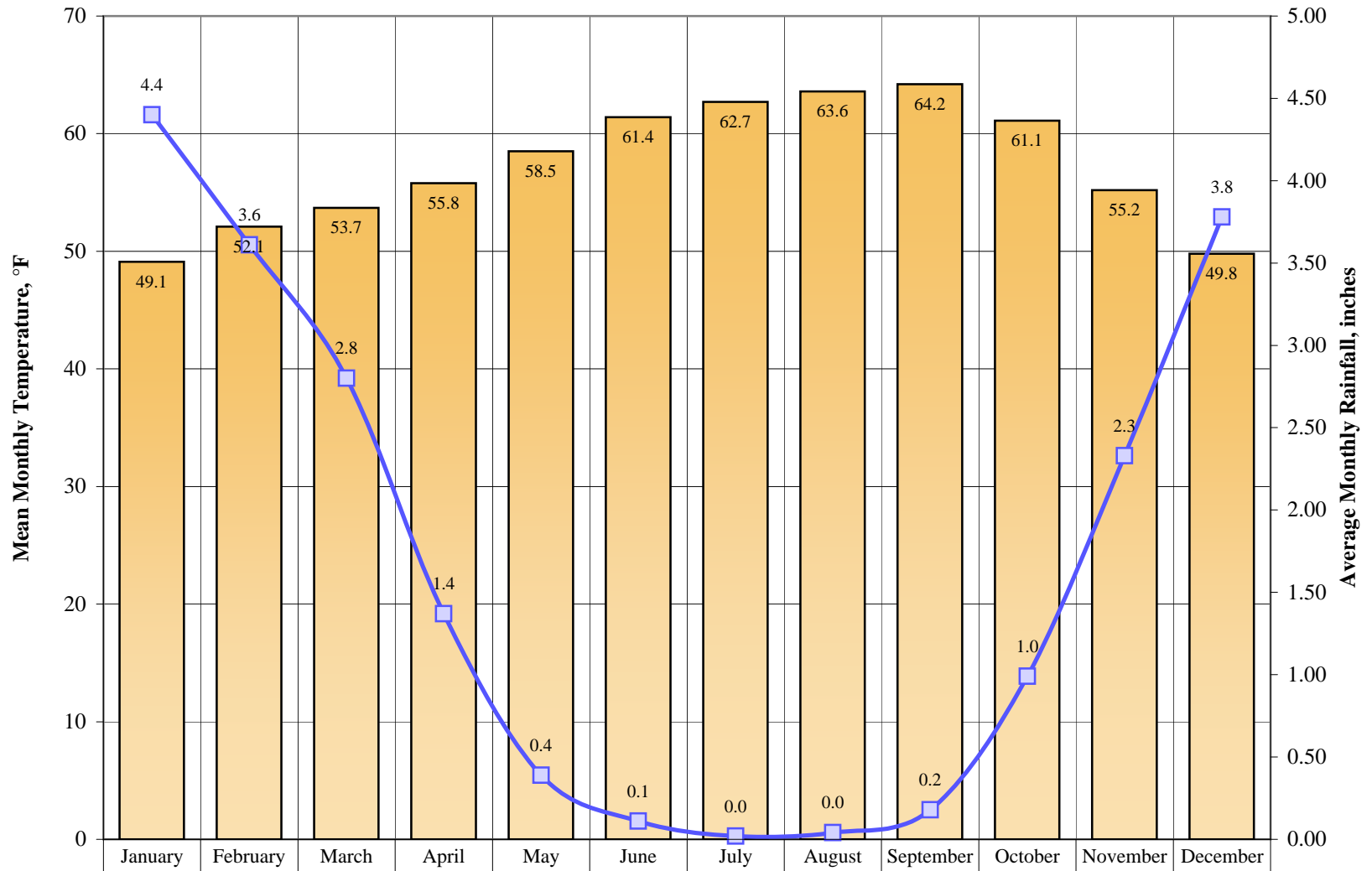
Year	US Census		Persons per Housing Unit	Single Family	Multi Family Residential			Flat Rate
	Population	Housing Units		Residential	Residential	Unit	Residential	
				Services (DU)	Services	Units (DU)	Density	Services (DU)
2000	55,024	18,716	2.940	13,450	151	5,266	34.87	0
2010	58,658	20,324	2.886	13,840	152	6,484	42.66	0
	107%	109%	98%	103%	101%	123%	122%	0%

Year	Single Family Residential	Multi Family Residential			Flat Rate Residential	Total Residential	Persons per Housing Unit	Estimated District
	Services (DU)	Services	Units (DU)	Unit Density	Services (DU)	Dwelling Units		Population
1995	12,661	151	4,678	31.0	0	17,339	2.967	51,443
1996	12,716	151	4,796	31.8	0	17,512	2.961	51,861
1997	12,911	151	4,913	32.5	0	17,824	2.956	52,690
1998	13,078	151	5,031	33.3	0	18,109	2.951	53,434
1999	13,227	151	5,148	34.1	0	18,375	2.945	54,122
2000	13,450	151	5,266	34.9	0	18,716	2.940	55,024
2001	13,465	151	5,384	35.7	0	18,849	2.935	55,312
2002	13,534	151	5,501	36.4	0	19,035	2.929	55,757
2003	13,532	150	5,581	37.2	0	19,113	2.924	55,884
2004	13,787	151	5,736	38.0	0	19,523	2.918	56,978
2005	13,829	151	5,854	38.8	0	19,682	2.913	57,335
2006	13,829	151	5,971	39.5	0	19,800	2.908	57,572
2007	13,838	151	6,089	40.3	0	19,927	2.902	57,833
2008	13,826	152	6,247	41.1	0	20,073	2.897	58,151
2009	13,796	152	6,366	41.9	0	20,161	2.892	58,297
2010	13,840	152	6,484	42.7	0	20,324	2.886	58,658
2015	14,004	164	6,987	42.7	0	20,991	2.886	60,581
2020	14,180	174	7,436	42.7	0	21,616	2.886	62,384
2025	14,358	185	7,914	42.7	0	22,271	2.886	64,277
2030	14,538	197	8,422	42.7	0	22,960	2.886	66,265
2035	14,721	210	8,963	42.7	0	23,684	2.886	68,353
2040	14,906	223	9,539	42.7	0	24,445	2.886	70,548

South San Francisco District Housing Projections



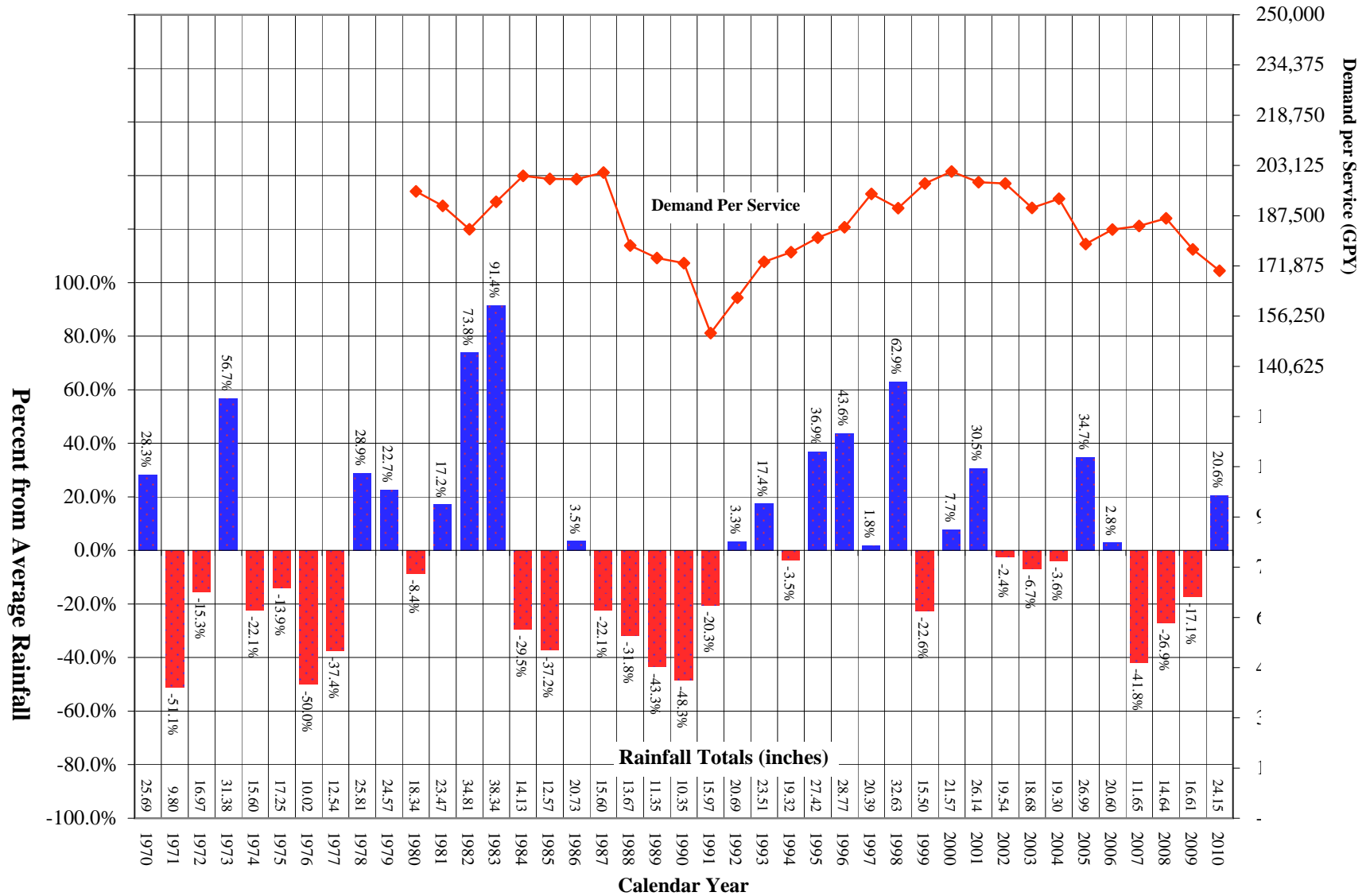
South San Francisco District Average Monthly Temperature and Rainfall



Temperature	49.1	52.1	53.7	55.8	58.5	61.4	62.7	63.6	64.2	61.1	55.2	49.8
Rainfall	4.4	3.61	2.8	1.37	0.39	0.11	0.02	0.04	0.18	0.99	2.33	3.78

South San Francisco District Comparison of Annual Rainfall to Historical Average

Average Annual Rainfall = 20.17 inches



California Water Service Company - South San Francisco District

Water Supply and Demand Analysis and Projections

Temperature & Rainfall History (Fahrenheit, Inches)

Year	Annual Average Temp.	Annual Average Rainfall	Rainfall Percent Variation	Demand per Service (Gal / Yr)	Percent of Average Demand
1970	57.6	25.69	28.3%		
1971	55.7	9.80	-51.1%		
1972	56.4	16.97	-15.3%		
1973	56.8	31.38	56.7%		
1974	56.4	15.60	-22.1%		
1975	55.4	17.25	-13.9%		
1976	56.8	10.02	-50.0%		
1977	56.7	12.54	-37.4%		
1978	57.3	25.81	28.9%		
1979	57.6	24.57	22.7%		
1980	57.1	18.34	-8.4%	195,049	104.8%
1981	57.7	23.47	17.2%	190,577	102.4%
1982	55.9	34.81	73.8%	183,249	98.5%
1983	58.6	38.34	91.4%	191,838	103.1%
1984	58.5	14.13	-29.5%	199,891	107.4%
1985	57.0	12.57	-37.2%	198,954	106.9%
1986	58.3	20.73	3.5%	198,879	106.9%
1987	58.7	15.60	-22.1%	200,932	108.0%
1988	58.6	13.67	-31.8%	178,193	95.8%
1989	57.5	11.35	-43.3%	174,310	93.7%
1990	57.9	10.35	-48.3%	172,721	92.8%
1991	57.6	15.97	-20.3%	151,003	81.2%
1992	59.7	20.69	3.3%	161,962	87.0%
1993	59.1	23.51	17.4%	173,105	93.0%
1994	56.9	19.32	-3.5%	176,143	94.7%

Year	Annual Average Temp.	Annual Average Rainfall	Rainfall Percent Variation	Demand per Service (Gal / Yr)	Percent of Average Demand
1995	58.2	27.42	36.9%	180,664	97.1%
1996	58.6	28.77	43.6%	183,937	98.9%
1997	59.6	20.39	1.8%	194,259	104.4%
1998	57.3	32.63	62.9%	189,816	102.0%
1999	56.6	15.50	-22.6%	197,536	106.2%
2000	58.1	21.57	7.7%	201,209	108.1%
2001	57.8	26.14	30.5%	197,927	106.4%
2002	58.0	19.54	-2.4%	197,508	106.1%
2003	58.6	18.68	-6.7%	189,909	102.1%
2004	59.2	19.30	-3.6%	192,788	103.6%
2005	58.6	26.99	34.7%	178,704	96.0%
2006	57.7	20.60	2.8%	183,181	98.4%
2007	57.5	11.65	-41.8%	184,281	99.0%
2008	57.6	14.64	-26.9%	186,695	100.3%
2009	58.1	16.61	-17.1%	176,998	95.1%
2010	58.6	24.15	20.6%	170,342	91.5%
2011					
2012					
2013					
2014					
2015					
2016					
2017					
2018					
2019					

Source: Western Regional Climate Center:

<http://www.wrcc.dri.edu/cgi-bin/cliMAIN.pl?ca7769>

Calendar Year	Average Water Year	Normal Water Year	Single-Dry Water Year	Multiple-Dry Water Years			
				1	2	3	4
	-	1997	2007	1988	1989	1990	1991
Demand per Service (gal/yr)	186,074	194,259	184,281	178,193	174,310	172,721	151,003
Difference from Average	100.0%	100.0%	94.9%	91.7%	89.7%	88.9%	77.7%

California Water Service Company - South San Francisco District

Water Supply and Demand Analysis and Projections

Temperature Data

Station:(047769) SAN FRANCISCO WSO AP															
From Year=1948 To Year=2010															
	Monthly Averages			Daily Extremes				Monthly Extremes				Max. Temp.		Min. Temp.	
	Max.	Min.	Mean	High	Date	Low	Date	Highest Mean	Year	Lowest Mean	Year	>= 90 F	<= 32 F	<= 32 F	<= 0 F
	F	F	F	F	dd/yyyy or yyyymmdd	F	dd/yyyy or yyyymmdd	F	-	F	-	# Days	# Days	# Days	# Days
January	55.8	42.5	49.1	72	13/2009	26	5/1949	53.8	2003	42.4	1949	0	0	1	0
February	59.1	45	52.1	77	26/1986	30	14/1949	56.3	1986	46.9	1949	0	0	0.2	0
March	61.2	46.2	53.7	85	25/1952	31	3/1966	59.4	2004	49.7	1954	0	0	0	0
April	63.8	47.7	55.8	92	29/1981	36	27/1955	60.7	1989	50.5	1975	0.1	0	0	0
May	66.8	50.3	58.5	97	27/1984	39	3/1950	64.4	1997	55.2	1965	0.4	0	0	0
June	70	52.7	61.4	106	14/1961	43	1/1954	65.2	1958	57.8	1952	0.8	0	0	0
July	71.4	54.1	62.7	105	17/1988	44	29/1951	65.8	1992	58.7	1951	0.5	0	0	0
August	72.1	55	63.6	100	1/1993	45	30/1952	67.3	1993	59.7	1955	0.3	0	0	0
September	73.5	54.9	64.2	103	14/1971	41	30/1950	69.7	1984	60.1	1948	1.4	0	0	0
October	70.2	52	61.1	99	5/1987	37	20/1949	65.4	1992	57	1971	0.3	0	0	0
November	62.9	47.4	55.2	85	1/1967	31	30/1954	59.8	1950	49.9	1994	0	0	0	0
December	56.4	43.3	49.8	75	2/1958	24	9/1972	55.2	1958	44.9	1965	0	0	0.7	0
Annual	65.3	49.3	57.3	106	19610614	24	19721209	60.1	1958	54.7	1949	3.9	0	2	0

Monthly Average ETo Report	Jan	Feb	Mar	Apr	May	Jun	Jul	Aug	Sep	Oct	Nov	Dec	Total
	1.24	1.68	3.10	3.90	4.65	5.10	4.96	4.65	3.90	2.79	1.80	1.24	39.01

1) California Irrigation Management Information System (CIMIS), <http://www.cimis.water.ca.gov/cimis/welcome.jsp>, EvapoTranspiration (Eto) Zones Map, Zone 2

California Water Service Company - South San Francisco District

Water Supply and Demand Analysis and Projections

Precipitaion Data

Station:(047769) SAN FRANCISCO WSO AP														
From Year=1948 To Year=2010														
	Precipitation											Total Snowfall		
	Mean	High	Year	Low	Year	1 Day Max.	>= 0.01 in.	>= 0.10 in.	>= 0.50 in.	>= 1.00 in.	Mean	High	Year	
	in.	in.	-	in.	-	in.	dd/yyyy or yyyymmdd	# Days	# Days	# Days	# Days	in.	in.	-
January	4.4	11.26	1993	0.24	1991	5.59	4/1982	11	8	3	1	0	1.5	1962
February	3.61	13.64	1998	0	1953	2.92	2/1998	10	7	3	1	0	0	1949
March	2.8	9.01	1958	0.05	1988	1.99	8/1978	10	6	2	0	0	0	1949
April	1.37	6.36	1958	0	1949	2.3	2/1958	6	3	1	0	0	0	1949
May	0.39	3.81	1957	0	1962	1.53	20/1957	3	1	0	0	0	0	1949
June	0.11	0.86	1967	0	1949	0.81	2/1967	1	0	0	0	0	0	1949
July	0.02	0.35	1977	0	1948	0.35	2/1977	0	0	0	0	0	0	1948
August	0.04	0.66	1976	0	1948	0.56	19/1997	1	0	0	0	0	0	1948
September	0.18	2.3	1959	0	1951	2.29	18/1959	1	0	0	0	0	0	1948
October	0.99	7.3	1962	0	1959	2.64	13/2009	3	2	1	0	0	0	1948
November	2.33	7.94	1973	0	1959	2.39	30/1973	8	4	2	1	0	0	1948
December	3.78	12.3	1955	0.01	1989	3.16	11/1995	10	7	3	1	0	0	1948
Annual	20.03	38.34	1983	9.2	1953	5.59	19820104	65	39	14	5	0	1.5	1962

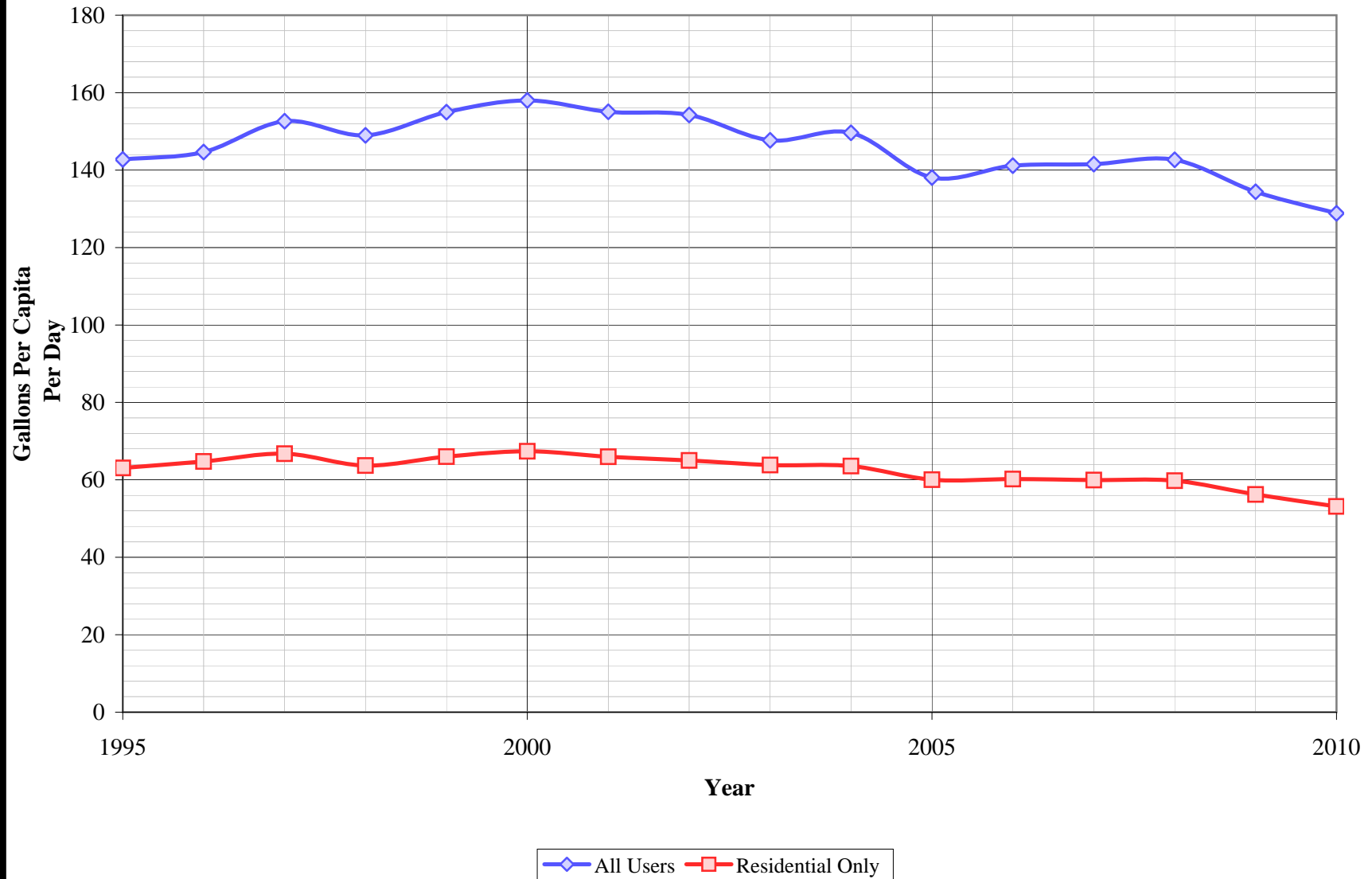
California Water Service Company - South San Francisco District
Water Supply and Demand Analysis and Projections
Well Production Capacity

	Well Number	Design Capacity (GPM)		Status
		Active	Inactive	
	1-02		60	Monitoring Well
	1-14		90	Inactive
	1-15	95		Active
	1-17		200	Inactive
	1-18		340	Inactive
	1-19	160		Active
	1-20	150		Active
	1-21	220		Active
	1-22	330		Active
Total Units	9	5	4	units

Design Capacity	1,645.0	955.0	690.0	GPM
	2.37	1.38	0.99	MGD
	2,653.4	1,540.4	1,113.0	AFY

Notes:
 1) Listed pump capacities on this worksheet represent design flowrates, actual flowrates are highly dependent on local system pressures, well characteristics, and other design criteria
 2) Values in bold are estimated
 Updated 1/1/2011

South San Francisco District Per Capita Consumption



California Water Service Company - South San Francisco District
Water Supply and Demand Analysis and Projections

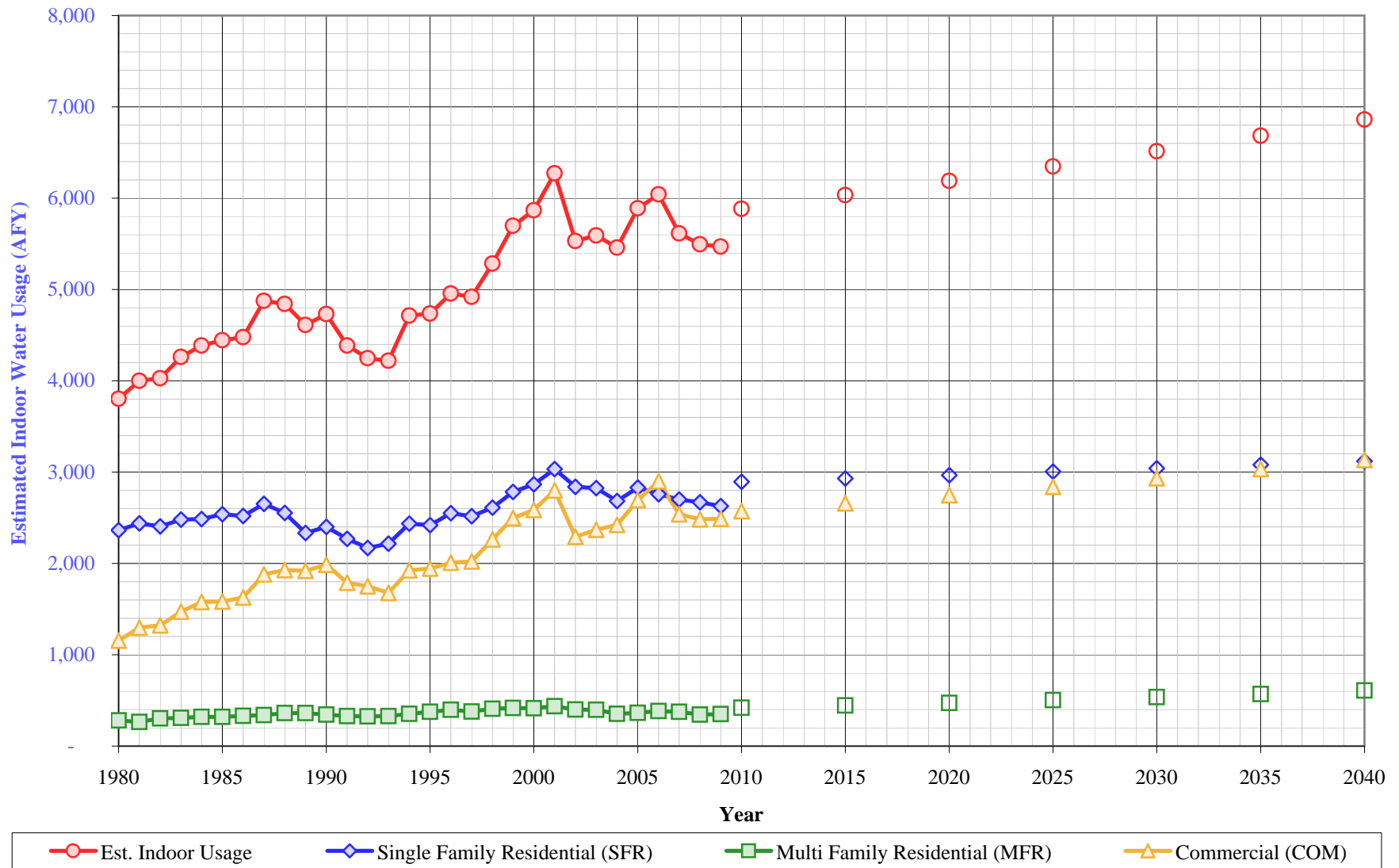
Per Capita Water Demand Calculation

Year	All Users			Residential Only		
	Usage (AFY)	Usage (MGY)	Gallons Per Capita Per Day	Usage (AFY)	Usage (MGY)	Gallons Per Capita Per Day
1995	8,226	2,680	143	3,634	1,184	63
1996	8,403	2,738	145	3,760	1,225	65
1997	9,008	2,935	153	3,941	1,284	67
1998	8,917	2,906	149	3,812	1,242	64
1999	9,394	3,061	155	4,001	1,304	66
2000	9,738	3,173	158	4,153	1,353	67
2001	9,606	3,130	155	4,088	1,332	66
2002	9,633	3,139	154	4,060	1,323	65
2003	9,245	3,012	148	3,995	1,302	64
2004	9,549	3,112	150	4,057	1,322	64
2005	8,869	2,890	138	3,856	1,256	60
2006	9,101	2,966	141	3,884	1,265	60
2007	9,169	2,988	142	3,884	1,266	60
2008	9,292	3,028	143	3,895	1,269	60
2009	8,777	2,860	134	3,672	1,196	56
2010	8,465	2,758	129	3,491	1,138	53
5 Yr. Avg.	8,961	2,920	138	3,765	1,227	58
10 Yr. Avg.	9,171	2,988	143	3,888	1,267	61

Five year average is from years 2006 through 2010

Ten year average is from years 2001 through 2010

South San Francisco District Estimated Indoor Water Usage



California Water Service Company - South San Francisco District
Water Supply and Demand Analysis and Projections

Estimated Indoor/Outdoor Water Usage

Year	Single Family Residential (SFR)							Multi Family Residential (MFR)					Commercial (COM)				Est. Indoor Usage AFY
	Metered Single Family Residential Indoor Use (Annualized 90% of January Total)			Indoor Flat Rate Usage (AFY)	Total SFR Indoor Usage			Multi Family Residential January Usage (CCF)	Multi Family Residential Indoor Use (Annualized 90% of January Total)			Commercial (CCF)	Commercial Indoor Use (Annualized 90% of January Total)				
	JAN (CCF)	AFY	AFY/Service		AFY	GPD/Service	%		AFY	GPD/Service	%		AFY	GPD/Service	%		
1980	95,391	2,365	1.19	0	2,365	179	74%	11,350	281		91%	46,591	1,155	863	69%	3,802	
1981	98,348	2,438	1.23	0	2,438	185	76%	10,671	265		85%	52,352	1,298	947	72%	4,001	
1982	96,989	2,405	1.21	0	2,405	182	76%	12,230	303		92%	53,275	1,321	929	69%	4,029	
1983	100,050	2,481	1.25	0	2,481	188	76%	12,449	309		89%	59,333	1,471	994	73%	4,260	
1984	100,283	2,486	1.25	0	2,486	188	73%	12,928	321	3,289	90%	63,660	1,578	1,092	66%	4,385	
1985	102,456	2,540	1.28	0	2,540	192	74%	12,940	321	3,147	86%	63,877	1,584	1,087	65%	4,445	
1986	101,617	2,519	1.27	0	2,519	191	72%	13,316	330	3,103	88%	65,625	1,627	1,109	62%	4,477	
1987	107,038	2,654	1.34	0	2,654	201	75%	13,699	340	2,834	88%	75,846	1,880	1,274	66%	4,874	
1988	102,947	2,552	1.28	0	2,552	192	85%	14,579	361	2,689	94%	77,718	1,927	1,278	70%	4,841	
1989	94,064	2,332	1.17	0	2,332	174	79%	14,562	361	2,460	95%	77,389	1,919	1,248	71%	4,612	
1990	96,759	2,399	1.21	0	2,399	178	85%	13,863	344	2,192	92%	80,134	1,987	1,258	73%	4,729	
1991	91,549	2,270	1.14	0	2,270	167	91%	13,195	327	2,086	93%	72,120	1,788	1,112	77%	4,385	
1992	87,531	2,170	1.09	0	2,170	160	78%	13,148	326	2,064	89%	70,575	1,750	1,073	72%	4,246	
1993	89,381	2,216	1.11	0	2,216	163	74%	13,240	328	2,064	87%	67,619	1,677	1,016	64%	4,221	
1994	98,271	2,436	1.22	0	2,436	179	77%	14,196	352	2,197	87%	77,672	1,926	1,158	69%	4,714	
1995	97,559	2,419	1.21	0	2,419	177	75%	15,106	375	2,338	87%	78,382	1,943	1,154	66%	4,737	
1996	102,869	2,550	1.28	0	2,550	187	77%	15,977	396	2,456	90%	81,052	2,010	1,173	67%	4,956	
1997	101,509	2,517	1.26	0	2,517	184	72%	15,241	378	2,343	85%	81,618	2,024	1,140	60%	4,918	
1998	105,357	2,612	1.31	0	2,612	189	78%	16,434	407	2,491	88%	91,348	2,265	1,237	68%	5,284	
1999	112,212	2,782	1.39	0	2,782	200	79%	16,792	416	2,546	89%	100,766	2,498	1,342	71%	5,697	
2000	115,622	2,867	1.43	0	2,867	204	78%	16,721	415	2,535	87%	104,274	2,585	1,374	69%	5,867	
2001	122,400	3,035	1.52	0	3,035	215	84%	17,618	437	2,653	95%	112,962	2,801	1,472	72%	6,272	
2002	114,547	2,840	1.42	0	2,840	201	78%	16,103	399	2,392	92%	92,403	2,291	1,209	61%	5,530	
2003	113,968	2,826	1.41	0	2,826	200	79%	16,049	398	2,368	93%	95,545	2,369	1,250	64%	5,592	
2004	108,234	2,683	1.34	0	2,683	189	74%	14,198	352	2,081	85%	97,706	2,422	1,268	62%	5,458	
2005	114,154	2,830	1.41	0	2,830	200	82%	14,673	364	2,151	88%	108,677	2,694	1,404	73%	5,889	
2006	111,205	2,757	1.37	0	2,757	194	80%	15,473	384	2,268	90%	116,985	2,900	1,507	75%	6,041	
2007	108,876	2,699	1.34	0	2,699	187	78%	15,154	376	2,221	90%	102,358	2,538	1,300	63%	5,613	
2008	107,613	2,668	1.33	0	2,668	182	77%	13,859	344	2,032	84%	100,146	2,483	1,255	61%	5,495	
2009	106,001	2,628	1.31	0	2,628	177	80%	14,148	351	2,074	88%	100,406	2,489	1,241	67%	5,468	
2010	---	---	---	---	2,895	187	79%	---	418	2,426	89%	---	2,571	1,192	67%	5,884	
2015	---	---	---	---	2,931	187	79%	---	445	2,426	89%	---	2,658	1,192	67%	6,034	
2020	---	---	---	---	2,968	187	79%	---	474	2,426	89%	---	2,747	1,192	67%	6,188	
2025	---	---	---	---	3,005	187	79%	---	504	2,426	89%	---	2,839	1,192	67%	6,348	
2030	---	---	---	---	3,043	187	79%	---	536	2,426	89%	---	2,934	1,192	67%	6,513	
2035	---	---	---	---	3,081	187	79%	---	571	2,426	89%	---	3,033	1,192	67%	6,684	
2040	---	---	---	---	3,120	187	79%	---	607	2,426	89%	---	3,134	1,192	67%	6,861	

California Water Service Company - South San Francisco District

Water Supply and Demand Analysis and Projections

Comparison of Projected Demand and Conservation Savings Between SBx7-7 Compliance Targets and Actual Proposed Programs

Year	SBx7-7 Compliance Target (gpcd)	Anticipated GPCD with Proposed Programs*	Estimated Population	Undadjusted Baseline Demand (AFY)	SBx7-7 Compliance Target Demand (AFY)	Anticipated Demand with Proposed Programs (AFY)	Compliance Target Savings Requirement (AFY)	Savings Due to Proposed Programs (AFY)
2005-2009 Average	140	140	57,838	9,042	9,042	9,042	0	0
2010	140	140	58,658	9,170	9,170	9,170	0	0
2011	139	137	59,200	9,255	9,221	9,085	34	170
2012	139	135	59,541	9,308	9,240	9,004	68	304
2013	138	133	59,884	9,362	9,259	8,922	103	440
2014	138	131	60,231	9,416	9,278	8,838	138	578
2015	137	130	60,581	9,471	9,297	8,822	174	649
2016	134	129	60,935	9,526	9,174	8,791	352	735
2017	132	128	61,292	9,582	9,049	8,761	533	821
2018	129	126	61,653	9,638	8,923	8,729	716	909
2019	127	125	62,017	9,695	8,795	8,697	900	998
2020	124	124	62,384	9,752	8,665	8,665	1,087	1,087
2021	124	124	62,756	9,811	8,717	8,717	1,094	1,094
2022	124	124	63,130	9,869	8,769	8,769	1,100	1,100
2023	124	124	63,509	9,928	8,821	8,821	1,107	1,107
2024	124	124	63,891	9,988	8,874	8,874	1,114	1,114
2025	124	124	64,277	10,048	8,928	8,928	1,120	1,120
2026	124	124	64,667	10,109	8,982	8,982	1,127	1,127
2027	124	124	65,060	10,171	9,037	9,037	1,134	1,134
2028	124	124	65,458	10,233	9,092	9,092	1,141	1,141
2029	124	124	65,859	10,296	9,148	9,148	1,148	1,148
2030	124	124	66,265	10,359	9,204	9,204	1,155	1,155
2031	124	124	66,674	10,423	9,261	9,261	1,162	1,162
2032	124	124	67,088	10,488	9,318	9,318	1,169	1,169
2033	124	124	67,505	10,553	9,376	9,376	1,177	1,177
2034	124	124	67,927	10,619	9,435	9,435	1,184	1,184
2035	124	124	68,353	10,686	9,494	9,494	1,191	1,191
2036	124	124	68,783	10,753	9,554	9,554	1,199	1,199
2037	124	124	69,218	10,821	9,614	9,614	1,207	1,207
2038	124	124	69,657	10,889	9,675	9,675	1,214	1,214
2039	124	124	70,100	10,959	9,737	9,737	1,222	1,222
2040	124	124	70,548	11,029	9,799	9,799	1,230	1,230

*Note: The district is projected to achieve its district-specific 2015 SBx7-7 compliance target through a combination of passive and active savings. For the purpose of this analysis it is assumed that there will be a linear reduction in GPCD from 2015-2020 to achieve the district-specific 2020 SBx7-7 compliance target. GPCD will remain flat from 2020 through 2040.