

Water Resources Planning Department

Water Supply / Demand Analysis and Projections
for
Bear Gulch District

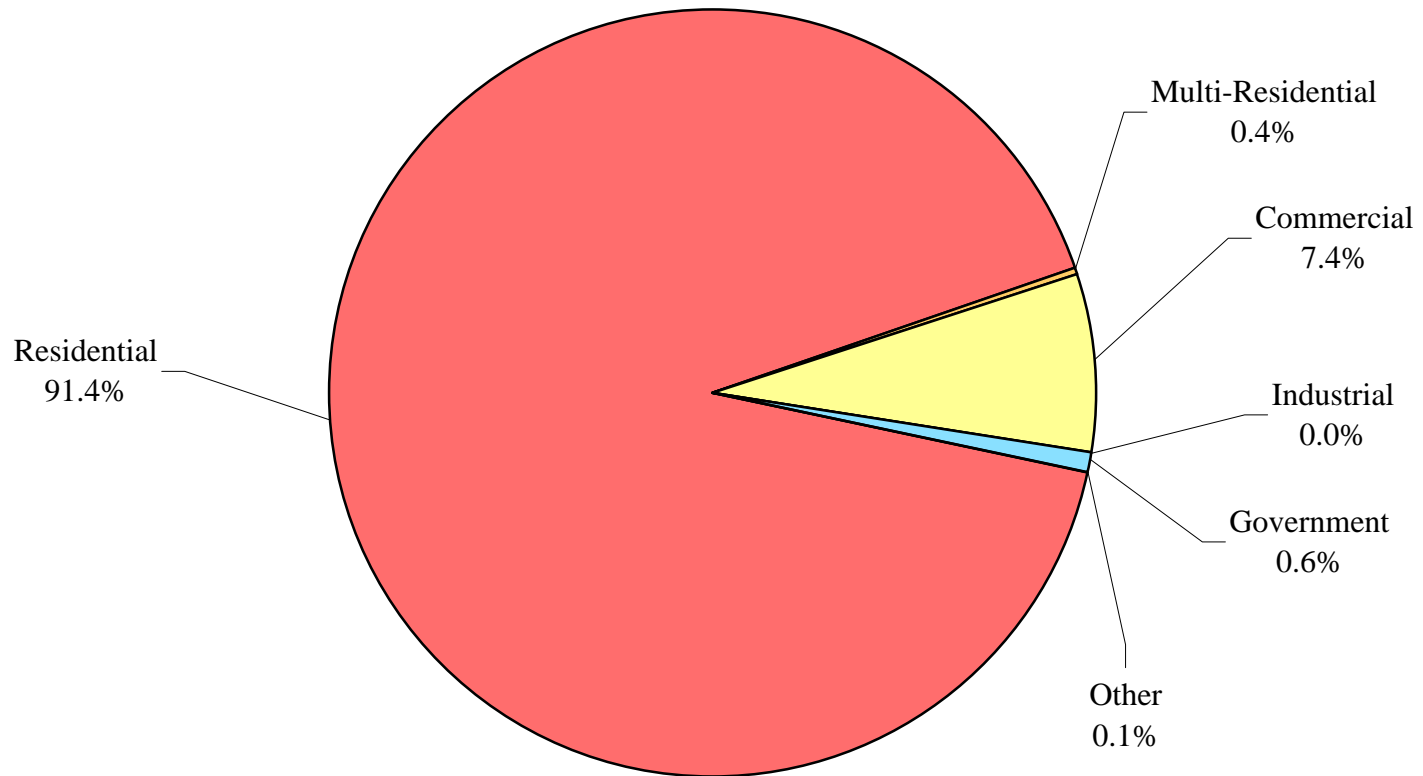
2010



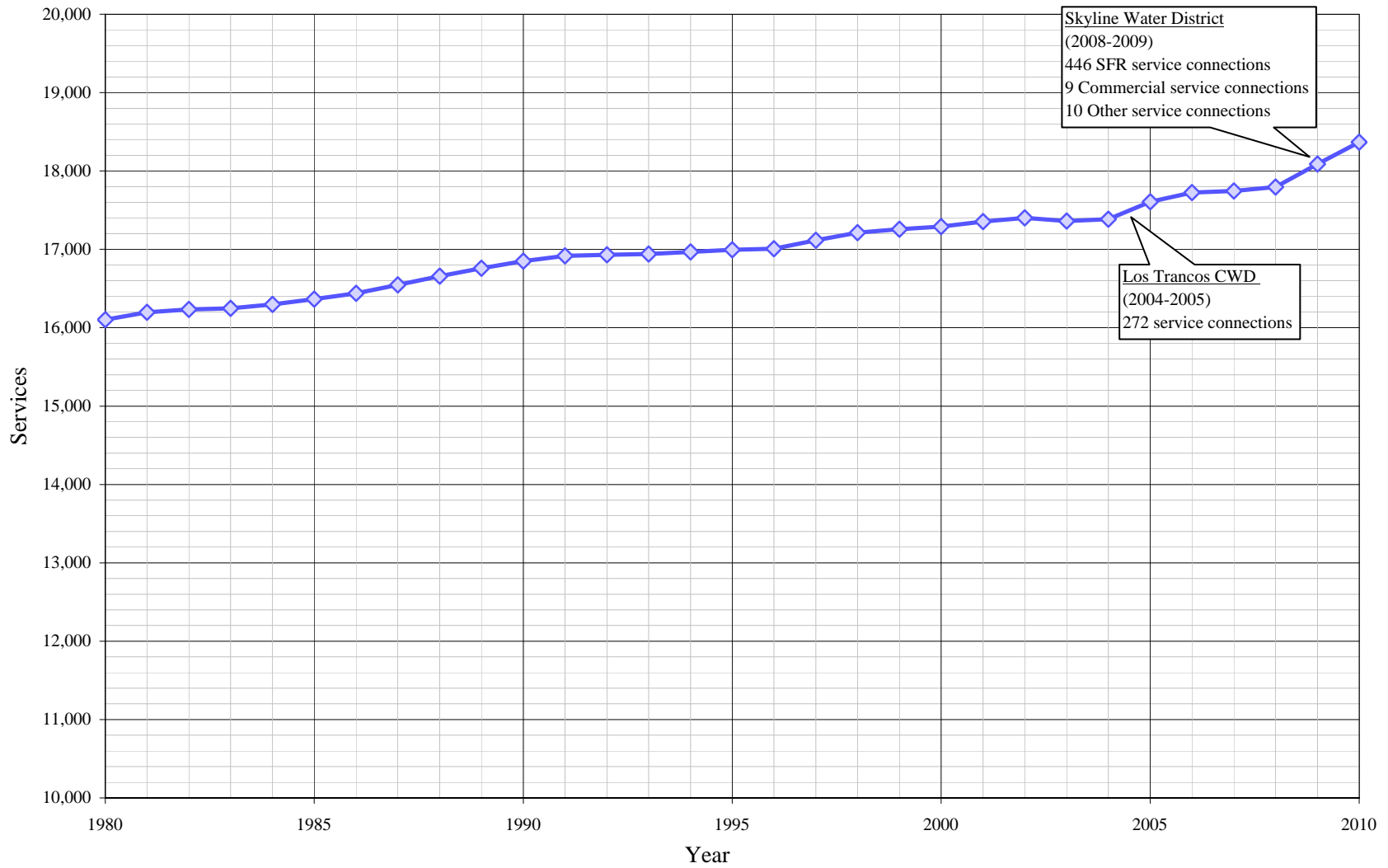
Table of Contents for Worksheets

Worksheet	Title
1	Annual Services
2	Service Growth Percentage
3	District Sales (ccf)
4	District Sales (AF)
5	Demand per Service (Gallons/Service/Year)
6	Demand per Service (Gallons per Day)
7	Percentage Change in Annual Demand
8	Percentage of Total Sales
9	Percentage of Total Demand
10	Demand Scenario 1 (Low Demand Projection)
11	Demand Scenario 2 (Average Demand Projection)
12	Demand Scenario 3 (High Demand Projection)
13	Demand Scenario 4 (Alternate Service Projection)
14	not used
15	Actual & Projected Annual Average Services
16	Actual & Projected Demand in Acre-Feet
17	Projected Annual Supply by Source
18	Historical and Projected Average Day, Maximum Day, and Peak Demands
19	Population as of the 2000 Average Annual Services
20	Temperature & Rainfall History
21	Groundwater Facilities (if available)
22	Per Capita Water Demand Calculation
23	Indoor/Outdoor Water Usage
24	SB-7 Compliance Demand Worksheet

Bear Gulch District Distribution of Services (2010)



Bear Gulch District Historical Service



California Water Service Company - Bear Gulch District
Water Supply and Demand Analysis and Projections
Service Growth Percentage

Worksheet 2

Year	Residential	Multi-Residential	Multi-Res. units	Commercial	Industrial	Government	Other	Total
1981	0.56%	1.61%	3.98%	0.49%	0.00%	5.32%	-15.00%	0.57%
1982	0.22%	0.00%	0.00%	0.64%	0.00%	1.01%	-5.88%	0.25%
1983	0.04%	0.00%	0.00%	0.48%	0.00%	2.00%	-6.25%	0.08%
1984	0.18%	0.00%	0.00%	1.35%	0.00%	2.94%	13.33%	0.30%
1985	0.38%	-1.59%	-0.32%	0.55%	0.00%	0.00%	29.41%	0.42%
1986	0.42%	0.00%	0.00%	0.63%	0.00%	0.95%	13.64%	0.45%
1987	0.68%	0.00%	0.00%	0.54%	0.00%	0.94%	0.00%	0.66%
1988	0.68%	3.23%	1.68%	0.54%	-57.14%	0.93%	8.00%	0.66%
1989	0.63%	0.00%	1.18%	0.08%	-66.67%	0.93%	22.22%	0.61%
1990	0.60%	0.00%	-2.18%	-0.15%	0.00%	-0.92%	3.03%	0.54%
1991	0.49%	0.00%	1.59%	-0.23%	0.00%	0.00%	-14.71%	0.40%
1992	0.25%	0.00%	0.47%	-0.54%	0.00%	-9.26%	-24.14%	0.08%
1993	0.20%	0.00%	0.00%	-1.01%	0.00%	-2.04%	-18.18%	0.07%
1994	0.16%	0.00%	-0.08%	-0.23%	0.00%	-1.04%	27.78%	0.15%
1995	0.14%	0.00%	0.08%	0.08%	0.00%	0.00%	8.70%	0.15%
1996	0.07%	0.00%	0.08%	0.08%	0.00%	1.05%	8.00%	0.09%
1997	0.69%	0.00%	-0.16%	-0.31%	0.00%	-1.04%	14.81%	0.62%
1998	0.59%	0.00%	-0.39%	0.16%	0.00%	2.11%	3.23%	0.57%
1999	0.27%	0.00%	0.39%	0.08%	0.00%	0.00%	3.13%	0.26%
2000	0.20%	0.00%	-0.06%	0.00%	0.00%	0.00%	6.06%	0.19%
2001	0.37%	0.00%	-0.08%	0.39%	0.00%	-2.06%	11.43%	0.38%
2002	0.28%	0.00%	-1.48%	-0.08%	0.00%	0.00%	5.13%	0.26%
2003	-0.18%	0.00%	4.57%	-0.16%	0.00%	1.05%	-24.39%	-0.23%
2004	0.13%	0.00%	1.67%	-0.08%	0.00%	1.04%	12.90%	0.14%
2005	1.40%	0.00%	3.43%	0.55%	0.00%	-2.06%	-14.29%	1.28%
2006	0.75%	-1.56%	-4.03%	-0.08%	0.00%	1.05%	-10.00%	0.66%
2007	0.03%	0.00%	-2.85%	0.47%	0.00%	0.00%	33.33%	0.11%
2008	-0.05%	12.70%	-3.09%	3.43%	0.00%	11.46%	-11.11%	0.29%
2009	1.52%	7.04%	-3.59%	2.76%	0.00%	8.41%	-15.63%	1.64%
2010	1.71%	5.26%	-100.00%	-0.22%	0.00%	0.00%	-11.11%	1.55%
5 Yr. Avg.	0.73%	3.64%	-2.03%	1.43%	0.00%	3.77%	-3.54%	0.80%
10 Yr. Avg.	0.45%	1.82%	-0.55%	0.72%	0.00%	1.89%	-0.66%	0.47%

Five year average = 2005 through 2009.

Ten year average = 2000 through 2009.

California Water Service Company - Bear Gulch District
Water Supply and Demand Analysis and Projections
Average Annual Services

Worksheet 1

Year	Residential	Multi-Residential	Multi-Res. units	Commercial	Industrial	Government	Other	Total	Annual Change
1980	14,685	62	1,207	1,236	7	94	20	16,104	98
1981	14,767	63	1,255	1,242	7	99	17	16,195	91
1982	14,799	63	1,255	1,250	7	100	16	16,235	40
1983	14,805	63	1,255	1,256	7	102	15	16,248	13
1984	14,831	63	1,255	1,273	7	105	17	16,296	48
1985	14,888	62	1,251	1,280	7	105	22	16,364	68
1986	14,950	62	1,251	1,288	7	106	25	16,438	74
1987	15,051	62	1,251	1,295	7	107	25	16,547	109
1988	15,153	64	1,272	1,302	3	108	27	16,657	110
1989	15,249	64	1,287	1,303	1	109	33	16,759	102
1990	15,341	64	1,259	1,301	1	108	34	16,849	90
1991	15,416	64	1,279	1,298	1	108	29	16,916	67
1992	15,454	64	1,285	1,291	1	98	22	16,930	14
1993	15,485	64	1,285	1,278	1	96	18	16,942	12
1994	15,510	64	1,284	1,275	1	95	23	16,968	26
1995	15,532	64	1,285	1,276	1	95	25	16,993	25
1996	15,543	64	1,286	1,277	1	96	27	17,008	15
1997	15,650	64	1,284	1,273	1	95	31	17,114	106
1998	15,743	64	1,279	1,275	1	97	32	17,212	98
1999	15,785	64	1,284	1,276	1	97	33	17,256	44
2000	15,816	64	1,283	1,276	1	97	35	17,289	33
2001	15,875	64	1,282	1,281	1	95	39	17,355	66
2002	15,919	64	1,263	1,280	1	95	41	17,400	45
2003	15,890	64	1,321	1,278	1	96	31	17,360	-40
2004	15,911	64	1,343	1,277	1	97	35	17,385	25
2005	16,134	64	1,389	1,284	1	95	30	17,608	248
2006	16,255	63	1,333	1,283	1	96	27	17,725	340
2007	16,260	63	1,295	1,289	1	96	36	17,745	137
2008	16,252	71	1,255	1,333	1	107	32	17,797	72
2009	16,499	76	1,210	1,370	1	116	27	18,089	344
2010	16,781	80		1,367	1	116	24	18,369	573
5 Yr Avg.	16,280	67	1,296	1,312	1	102	30	17,889	228
10 Yr Avg.	16,081	66	1,297	1,295	1	99	33	17,575	127
20 Yr Avg.	15,814	65	1,289	1,289	1	99	30	17,297	88

Five year average = 2005 through 2009.

Ten year average = 2000 through 2009.

Twenty year average = 1990 through 2009.

Note: Reclassification occurred between categories from 2007 to 2009

California Water Service Company - Bear Gulch District

Worksheet 3

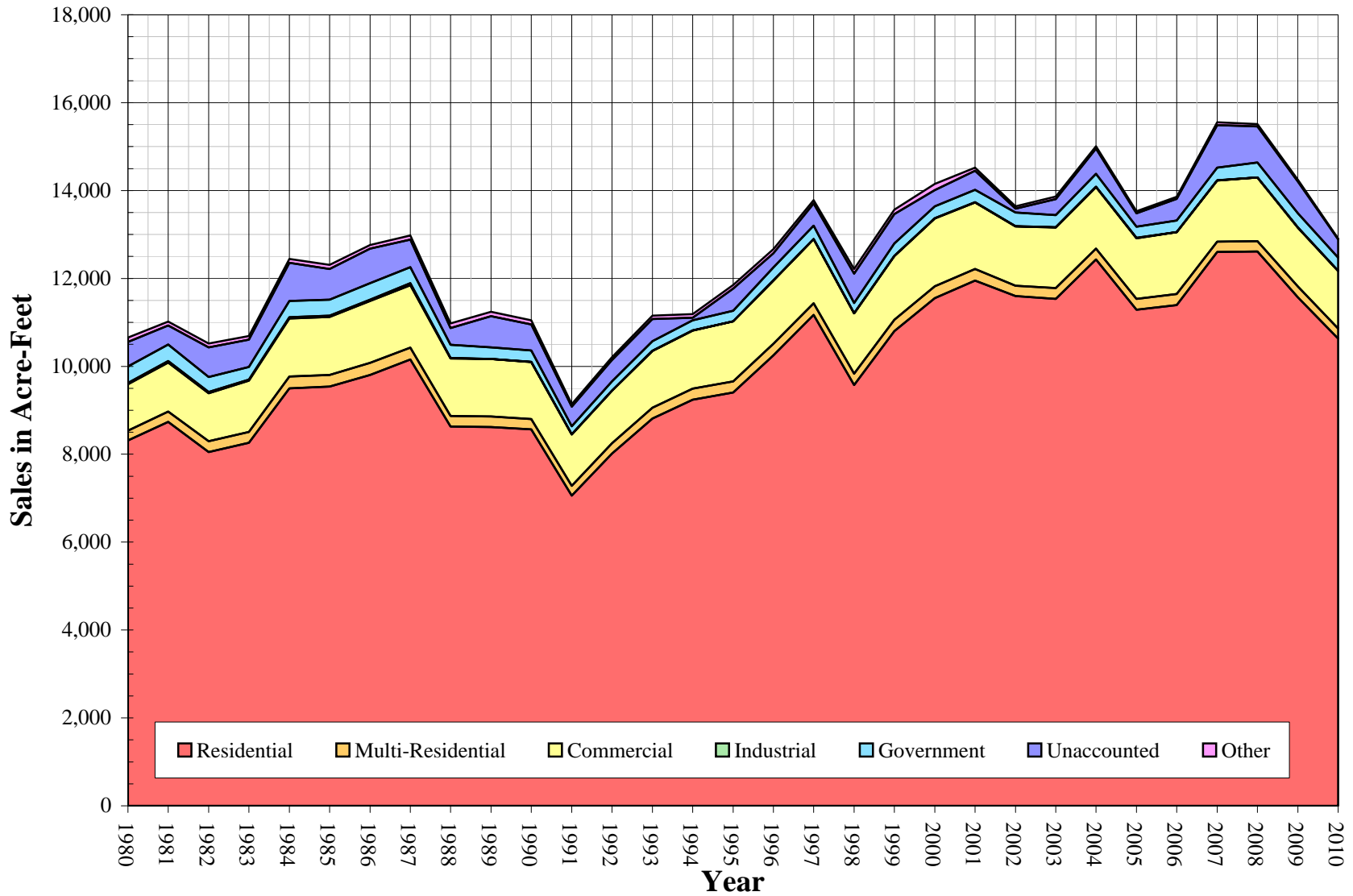
Water Supply and Demand Analysis and Projections

Sales (ccf)

Year	Multi-						Unaccounted Water	Total(ccf) Sales	Total(ccf) Demand	Total(kgal) Demand
	Residential	Residential	Commercial	Industrial	Government	Other				
1980	3,622,620	95,509	461,347	12,182	164,115	43,232	241,326	4,399,005	4,640,331	3,471,209
1981	3,805,829	101,530	486,586	14,369	164,342	39,509	187,745	4,612,165	4,799,910	3,590,582
1982	3,507,340	105,732	475,835	13,334	148,277	39,045	293,755	4,289,563	4,583,318	3,428,560
1983	3,599,498	106,145	507,784	12,333	125,002	35,750	270,032	4,386,512	4,656,544	3,483,337
1984	4,138,765	115,610	576,979	11,808	160,510	39,120	377,815	5,042,792	5,420,607	4,054,896
1985	4,155,996	115,198	573,832	13,054	157,491	41,567	305,517	5,057,138	5,362,655	4,011,545
1986	4,271,422	119,256	612,853	13,723	161,960	36,681	343,194	5,215,895	5,559,089	4,158,488
1987	4,423,317	118,365	617,093	21,749	157,289	41,642	274,918	5,379,455	5,654,373	4,229,765
1988	3,759,045	104,114	569,777	6,501	129,319	46,780	167,063	4,615,536	4,782,599	3,577,633
1989	3,754,441	104,719	568,789	1,994	114,732	42,589	309,116	4,587,264	4,896,380	3,662,747
1990	3,730,414	104,173	563,613	1,550	113,092	39,949	259,693	4,552,791	4,812,484	3,599,988
1991	3,075,113	97,324	508,806	1,320	79,349	26,711	193,012	3,788,623	3,981,635	2,978,470
1992	3,491,266	102,754	520,087	1,719	92,011	27,480	210,922	4,235,317	4,446,239	3,326,018
1993	3,837,861	108,725	562,469	1,858	94,787	32,097	219,458	4,637,797	4,857,255	3,633,479
1994	4,024,986	109,334	576,085	1,941	98,724	34,055	28,090	4,845,125	4,873,215	3,645,418
1995	4,095,725	110,587	594,623	2,000	103,707	33,316	221,257	4,939,958	5,161,215	3,860,857
1996	4,465,893	112,877	628,021	1,964	128,193	40,850	139,301	5,377,798	5,517,099	4,127,077
1997	4,867,202	112,901	635,987	2,279	132,143	32,724	219,376	5,783,236	6,002,612	4,490,266
1998	4,170,621	112,194	597,560	1,474	101,276	44,442	292,174	5,027,567	5,319,741	3,979,443
1999	4,705,352	112,500	630,888	2,072	124,180	42,107	290,799	5,617,099	5,907,898	4,419,415
2000	5,032,546	116,929	672,600	2,968	117,151	60,389	160,776	6,002,583	6,163,359	4,610,513
2001	5,206,690	115,321	658,775	2,041	121,511	30,815	189,077	6,135,153	6,324,230	4,730,853
2002	5,053,040	102,116	586,940	3,627	135,274	21,012	39,206	5,902,009	5,941,215	4,444,338
2003	5,024,627	108,060	599,750	3,230	119,525	23,563	159,155	5,878,755	6,037,910	4,516,671
2004	5,414,548	108,210	611,768	2,522	127,856	22,774	249,781	6,287,678	6,537,459	4,890,359
2005	4,916,025	108,857	600,803	3,225	111,235	20,072	132,237	5,760,217	5,892,454	4,407,862
2006	4,963,017	109,273	613,084	2,012	113,134	21,630	214,516	5,822,150	6,036,666	4,515,740
2007	5,488,957	102,967	605,085	2,796	125,704	28,823	420,984	6,354,332	6,775,316	5,068,289
2008	5,495,432	100,433	631,289	2,284	147,553	21,294	358,066	6,398,285	6,756,351	5,054,102
2009	5,040,959	106,398	583,190	2,550	140,102	17,825	313,888	5,891,024	6,204,912	4,641,597
2010	4,630,186	101,139	570,230	1,841	129,166	8,410	181,467	5,440,972	5,622,439	4,205,877
5 Yr. Avg.	5,180,878	105,586	606,690	2,573	127,546	21,929	287,938	6,045,202	6,333,140	4,737,518
10 Yr. Avg.	5,163,584	107,856	616,328	2,726	125,905	26,820	223,769	6,043,219	6,266,987	4,688,032

Five year average = 2005 through 2009. Ten year average = 2000 through 2009.

Bear Gulch District Historical Sales



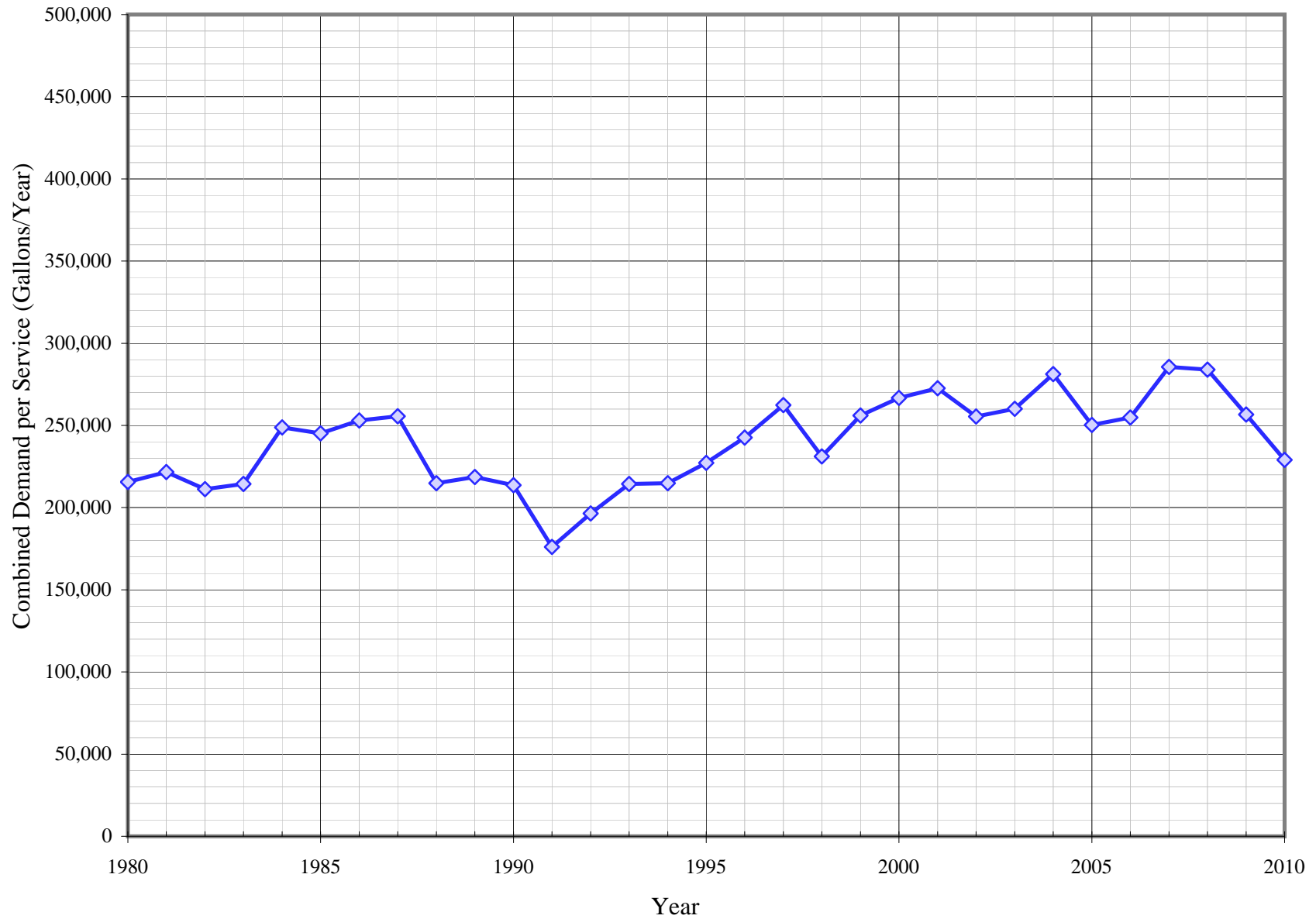
California Water Service Company - Bear Gulch District
Water Supply and Demand Analysis and Projections
Sales (AF)

Worksheet 4

Year	Residential	Multi-Residential	Commercial	Industrial	Government	Other	Unaccounted Water	Total(AF) Sales	Total(AF) Demand	Total(MGal) Demand
1980	8,316	219	1,059	28.0	377	99	554	10,099	10,653	3,471
1981	8,737	233	1,117	33.0	377	91	431	10,588	11,019	3,591
1982	8,052	243	1,092	30.6	340	90	674	9,847	10,522	3,429
1983	8,263	244	1,166	28.3	287	82	620	10,070	10,690	3,483
1984	9,501	265	1,325	27.1	368	90	867	11,577	12,444	4,055
1985	9,541	264	1,317	30.0	362	95	701	11,610	12,311	4,012
1986	9,806	274	1,407	31.5	372	84	788	11,974	12,762	4,158
1987	10,155	272	1,417	49.9	361	96	631	12,350	12,981	4,230
1988	8,630	239	1,308	14.9	297	107	384	10,596	10,979	3,578
1989	8,619	240	1,306	4.6	263	98	710	10,531	11,241	3,663
1990	8,564	239	1,294	3.6	260	92	596	10,452	11,048	3,600
1991	7,059	223	1,168	3.0	182	61	443	8,697	9,141	2,978
1992	8,015	236	1,194	3.9	211	63	484	9,723	10,207	3,326
1993	8,811	250	1,291	4.3	218	74	504	10,647	11,151	3,633
1994	9,240	251	1,323	4.5	227	78	64	11,123	11,187	3,645
1995	9,402	254	1,365	4.6	238	76	508	11,341	11,849	3,861
1996	10,252	259	1,442	4.5	294	94	320	12,346	12,666	4,127
1997	11,174	259	1,460	5.2	303	75	504	13,276	13,780	4,490
1998	9,574	258	1,372	3.4	232	102	671	11,542	12,212	3,979
1999	10,802	258	1,448	4.8	285	97	668	12,895	13,563	4,419
2000	11,553	268	1,544	6.8	269	139	369	13,780	14,149	4,611
2001	11,953	265	1,512	4.7	279	71	434	14,084	14,518	4,731
2002	11,600	234	1,347	8.3	311	48	90	13,549	13,639	4,444
2003	11,535	248	1,377	7.4	274	54	365	13,496	13,861	4,517
2004	12,430	248	1,404	5.8	294	52	573	14,435	15,008	4,890
2005	11,286	250	1,379	7.4	255	46	304	13,224	13,527	4,408
2006	11,394	251	1,407	4.6	260	50	492	13,366	13,858	4,516
2007	12,601	236	1,389	6.4	289	66	966	14,588	15,554	5,068
2008	12,616	231	1,449	5.2	339	49	822	14,688	15,510	5,054
2009	11,572	244	1,339	5.9	322	41	721	13,524	14,245	4,642
2010	10,629	232	1,309	4.2	297	19	417	12,491	12,907	4,206
5 Yr. Avg.	11,894	242	1,393	6	293	50	661	13,878	14,539	4,738
10 Yr. Avg.	11,854	248	1,415	6	289	62	514	13,873	14,387	4,688

Five year average = 2005 through 2009. Ten year average = 2000 through 2009.

Bear Gulch District Historical Demand per Service



California Water Service Company - Bear Gulch District
Water Supply and Demand Analysis and Projections
Demand per Service (Gallons per Year)

Worksheet 5

Year	Multi-Residential						Total Other	Unaccounted / Total Services	Combined Demand/Serv
	Residential	(service)	(unit)	Commercial	Industrial	Government			
1980	184,536	1,152,350	59,193	279,216	1,301,824	1,306,027	1,616,989	11,210	215,549
1981	192,792	1,205,551	60,518	293,069	1,535,537	1,241,781	1,738,517	8,672	221,709
1982	177,287	1,255,445	63,022	284,759	1,424,932	1,109,189	1,825,481	13,535	211,183
1983	181,872	1,260,349	63,269	302,427	1,317,961	916,745	1,782,857	12,432	214,386
1984	208,753	1,372,735	68,910	339,050	1,261,857	1,143,522	1,721,400	17,343	248,828
1985	208,819	1,389,905	68,884	335,356	1,395,010	1,122,014	1,413,376	13,966	245,145
1986	213,729	1,438,866	71,311	355,936	1,466,503	1,142,967	1,097,572	15,618	252,980
1987	219,844	1,428,116	70,778	356,462	2,324,198	1,099,629	1,246,015	12,428	255,621
1988	185,571	1,216,917	61,229	327,360	1,621,029	895,716	1,296,069	7,503	214,783
1989	184,177	1,223,988	60,867	326,542	1,491,616	787,390	965,418	13,798	218,554
1990	181,901	1,217,607	61,896	324,068	1,159,481	783,321	878,939	11,530	213,662
1991	149,218	1,137,553	56,922	293,231	987,429	549,604	689,007	8,535	176,074
1992	168,995	1,201,021	59,817	301,357	1,285,901	702,337	934,385	9,320	196,457
1993	185,400	1,270,812	63,293	329,230	1,389,881	738,600	1,333,901	9,690	214,466
1994	194,126	1,277,930	63,697	337,993	1,451,969	777,376	1,107,605	1,238	214,841
1995	197,258	1,292,575	64,377	348,596	1,496,104	816,613	996,884	9,740	227,203
1996	214,934	1,319,342	65,659	367,888	1,469,174	998,907	1,131,775	6,127	242,655
1997	232,647	1,319,622	65,776	373,725	1,704,811	1,040,525	789,653	9,589	262,374
1998	198,173	1,311,359	65,619	350,593	1,102,629	781,028	1,038,904	12,698	231,202
1999	222,987	1,314,935	65,542	369,857	1,549,964	957,661	954,492	12,606	256,109
2000	238,025	1,366,703	68,162	394,310	2,220,218	903,454	1,290,689	6,956	266,673
2001	245,346	1,347,908	67,277	384,698	1,526,774	956,806	591,057	8,150	272,593
2002	237,448	1,193,564	60,469	343,017	2,713,185	1,065,179	383,368	1,686	255,422
2003	236,544	1,263,039	61,192	351,052	2,416,208	931,364	568,592	6,858	260,177
2004	254,564	1,264,792	60,273	358,367	1,886,587	986,010	486,747	10,748	281,298
2005	227,931	1,272,355	58,625	350,025	2,412,468	875,890	500,497	5,618	250,333
2006	228,397	1,297,490	61,322	357,458	1,505,081	881,564	599,273	9,053	254,767
2007	252,523	1,222,614	59,479	351,152	2,091,553	979,512	598,920	17,747	285,618
2008	252,942	1,058,156	59,864	354,200	1,708,551	1,031,564	497,782	15,051	283,994
2009	228,553	1,047,253	65,778	318,435	1,907,533	903,479	493,853	12,981	256,598
2010	206,401	945,715		312,042	1,377,164	832,956	262,130	7,390	228,966
5 Yr. Avg.	238,069	1,179,574	61,013	346,254	1,925,037	934,402	538,065	12,090	266,262
10 Yr. Avg.	240,227	1,233,387	62,244	356,271	2,038,816	951,482	601,078	9,485	266,747

Five year average is from years 2005 through 2009.

Ten year average is from years 2000 through 2009.

California Water Service Company - Bear Gulch District
Water Supply and Demand Analysis and Projections
Demand per Service (Gallons per Day)

Worksheet 6

Year	Multi-Residential					Total Other	Unaccounted / Total Services	Combined Demand/Serv	
	Residential	(service)	(unit)	Commercial	Industrial				Government
1980	506	3,157	162	765	3,567	3,578	4,430	31	591
1981	528	3,303	166	803	4,207	3,402	4,763	24	607
1982	486	3,440	173	780	3,904	3,039	5,001	37	579
1983	498	3,453	173	829	3,611	2,512	4,885	34	587
1984	572	3,761	189	929	3,457	3,133	4,716	48	682
1985	572	3,808	189	919	3,822	3,074	3,872	38	672
1986	586	3,942	195	975	4,018	3,131	3,007	43	693
1987	602	3,913	194	977	6,368	3,013	3,414	34	700
1988	508	3,334	168	897	4,441	2,454	3,551	21	588
1989	505	3,353	167	895	4,087	2,157	2,645	38	599
1990	498	3,336	170	888	3,177	2,146	2,408	32	585
1991	409	3,117	156	803	2,705	1,506	1,888	23	482
1992	463	3,290	164	826	3,523	1,924	2,560	26	538
1993	508	3,482	173	902	3,808	2,024	3,655	27	588
1994	532	3,501	175	926	3,978	2,130	3,035	3	589
1995	540	3,541	176	955	4,099	2,237	2,731	27	622
1996	589	3,615	180	1,008	4,025	2,737	3,101	17	665
1997	637	3,615	180	1,024	4,671	2,851	2,163	26	719
1998	543	3,593	180	961	3,021	2,140	2,846	35	633
1999	611	3,603	180	1,013	4,246	2,624	2,615	35	702
2000	652	3,744	187	1,080	6,083	2,475	3,536	19	731
2001	672	3,693	184	1,054	4,183	2,621	1,619	22	747
2002	651	3,270	166	940	7,433	2,918	1,050	5	700
2003	648	3,460	168	962	6,620	2,552	1,558	19	713
2004	697	3,465	165	982	5,169	2,701	1,334	29	771
2005	624	3,486	161	959	6,610	2,400	1,371	15	686
2006	626	3,555	168	979	4,124	2,415	1,642	25	698
2007	692	3,350	163	962	5,730	2,684	1,641	49	783
2008	693	2,899	164	970	4,681	2,826	1,364	41	778
2009	626	2,869	180	872	5,226	2,475	1,353	36	703
2010	565	2,591		855	3,773	2,282	718	20	627
5 Yr. Avg.	652	3,232	167	949	5,274	2,560	1,474	33	729
10 Yr. Avg.	658	3,379	171	976	5,586	2,607	1,647	26	731

Five year average is from years 2005 through 2009.

Ten year average is from years 2000 through 2009.

California Water Service Company - Bear Gulch District
Water Supply and Demand Analysis and Projections
Percentage Change in Annual Demand

Worksheet 7

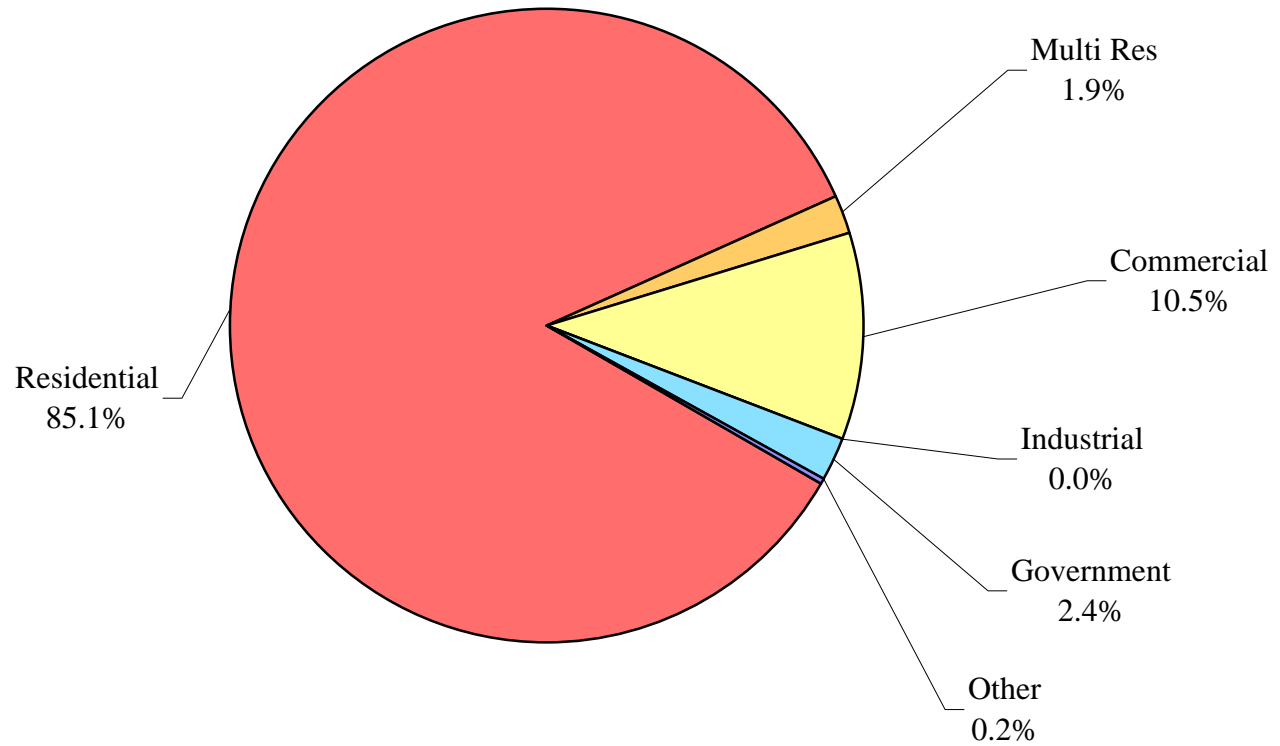
Year	Residential	Multi Res	Commercial	Industrial	Government	Other	Unaccounted	Total
1981	5.06%	6.30%	5.47%	17.95%	0.14%	-8.61%	-22.20%	3.44%
1982	-7.84%	4.14%	-2.21%	-7.20%	-9.78%	-1.17%	56.47%	-4.51%
1983	2.63%	0.39%	6.71%	-7.51%	-15.70%	-8.44%	-8.08%	1.60%
1984	14.98%	8.92%	13.63%	-4.26%	28.41%	9.43%	39.91%	16.41%
1985	0.42%	-0.36%	-0.55%	10.55%	-1.88%	6.26%	-19.14%	-1.07%
1986	2.78%	3.52%	6.80%	5.12%	2.84%	-11.75%	12.33%	3.66%
1987	3.56%	-0.75%	0.69%	58.49%	-2.88%	13.52%	-19.89%	1.71%
1988	-15.02%	-12.04%	-7.67%	-70.11%	-17.78%	12.34%	-39.23%	-15.42%
1989	-0.12%	0.58%	-0.17%	-69.33%	-11.28%	-8.96%	85.03%	2.38%
1990	-0.64%	-0.52%	-0.91%	-22.27%	-1.43%	-6.20%	-15.99%	-1.71%
1991	-17.57%	-6.57%	-9.72%	-14.84%	-29.84%	-33.14%	-25.68%	-17.26%
1992	13.53%	5.58%	2.22%	30.23%	15.96%	2.88%	9.28%	11.67%
1993	9.93%	5.81%	8.15%	8.09%	3.02%	16.80%	4.05%	9.24%
1994	4.88%	0.56%	2.42%	4.47%	4.15%	6.10%	-87.20%	0.33%
1995	1.76%	1.15%	3.22%	3.04%	5.05%	-2.17%	687.68%	5.91%
1996	9.04%	2.07%	5.62%	-1.80%	23.61%	22.61%	-37.04%	6.90%
1997	8.99%	0.02%	1.27%	16.04%	3.08%	-19.89%	57.48%	8.80%
1998	-14.31%	-0.63%	-6.04%	-35.32%	-23.36%	35.81%	33.18%	-11.38%
1999	12.82%	0.27%	5.58%	40.57%	22.62%	-5.25%	-0.47%	11.06%
2000	6.95%	3.94%	6.61%	43.24%	-5.66%	43.42%	-44.71%	4.32%
2001	3.46%	-1.38%	-2.06%	-31.23%	3.72%	-48.97%	17.60%	2.61%
2002	-2.95%	-11.45%	-10.90%	77.71%	11.33%	-31.81%	-79.26%	-6.06%
2003	-0.56%	5.82%	2.18%	-10.95%	-11.64%	12.14%	305.94%	1.63%
2004	7.76%	0.14%	2.00%	-21.92%	6.97%	-3.35%	56.94%	8.27%
2005	-9.21%	0.60%	-1.79%	27.87%	-13.00%	-11.86%	-47.06%	-9.87%
2006	0.96%	0.38%	2.04%	-37.61%	1.71%	7.76%	62.22%	2.45%
2007	10.60%	-5.77%	-1.30%	38.97%	11.11%	33.25%	96.25%	12.24%
2008	0.12%	-2.46%	4.33%	-18.31%	17.38%	-26.12%	-14.95%	-0.28%
2009	-8.27%	5.94%	-7.62%	11.65%	-5.05%	-16.29%	-12.34%	-8.16%
2010	-8.15%	-4.94%	-2.22%	-27.80%	-7.81%	-52.82%	-42.19%	-9.39%
5 Yr. Avg.	-1.16%	-0.26%	-0.87%	4.51%	2.43%	-2.65%	16.82%	-0.72%
10 Yr. Avg.	0.89%	-0.42%	-0.65%	7.94%	1.69%	-4.18%	34.06%	0.72%

Five year average is from years 2005 through 2009.

Ten year average is from years 2000 through 2009.

Bear Gulch District

Percent of Total Sales by Type of Use (2010)



California Water Service Company - Bear Gulch District
Water Supply and Demand Analysis and Projections
Percentage of Total Sales

Worksheet 8

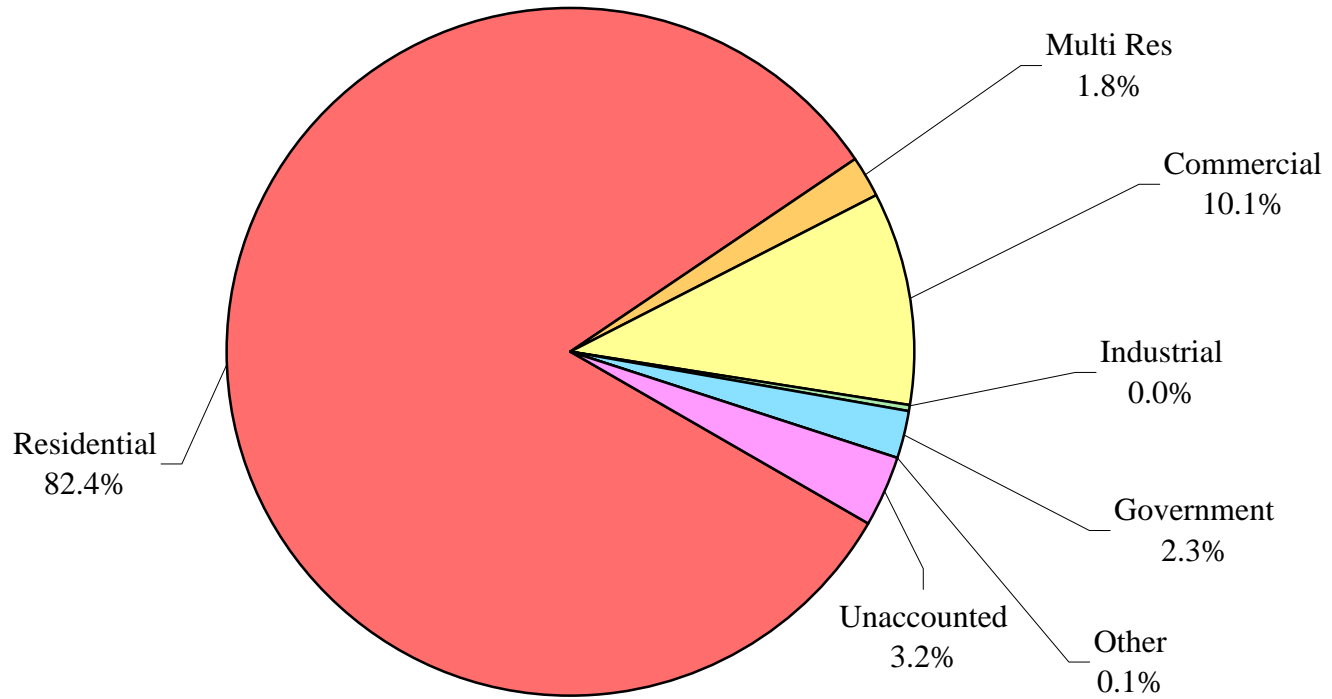
Year	Residential	Multi Res	Commercial	Industrial	Government	Other	Percent Total
1980	82.35%	2.17%	10.49%	0.28%	3.73%	0.98%	100.00%
1981	82.52%	2.20%	10.55%	0.31%	3.56%	0.86%	100.00%
1982	81.76%	2.46%	11.09%	0.31%	3.46%	0.91%	100.00%
1983	82.06%	2.42%	11.58%	0.28%	2.85%	0.81%	100.00%
1984	82.07%	2.29%	11.44%	0.23%	3.18%	0.78%	100.00%
1985	82.18%	2.28%	11.35%	0.26%	3.11%	0.82%	100.00%
1986	81.89%	2.29%	11.75%	0.26%	3.11%	0.70%	100.00%
1987	82.23%	2.20%	11.47%	0.40%	2.92%	0.77%	100.00%
1988	81.44%	2.26%	12.34%	0.14%	2.80%	1.01%	100.00%
1989	81.84%	2.28%	12.40%	0.04%	2.50%	0.93%	100.00%
1990	81.94%	2.29%	12.38%	0.03%	2.48%	0.88%	100.00%
1991	81.17%	2.57%	13.43%	0.03%	2.09%	0.71%	100.00%
1992	82.43%	2.43%	12.28%	0.04%	2.17%	0.65%	100.00%
1993	82.75%	2.34%	12.13%	0.04%	2.04%	0.69%	100.00%
1994	83.07%	2.26%	11.89%	0.04%	2.04%	0.70%	100.00%
1995	82.91%	2.24%	12.04%	0.04%	2.10%	0.67%	100.00%
1996	83.04%	2.10%	11.68%	0.04%	2.38%	0.76%	100.00%
1997	84.16%	1.95%	11.00%	0.04%	2.28%	0.57%	100.00%
1998	82.96%	2.23%	11.89%	0.03%	2.01%	0.88%	100.00%
1999	83.77%	2.00%	11.23%	0.04%	2.21%	0.75%	100.00%
2000	83.84%	1.95%	11.21%	0.05%	1.95%	1.01%	100.00%
2001	84.87%	1.88%	10.74%	0.03%	1.98%	0.50%	100.00%
2002	85.62%	1.73%	9.94%	0.06%	2.29%	0.36%	100.00%
2003	85.47%	1.84%	10.20%	0.05%	2.03%	0.40%	100.00%
2004	86.11%	1.72%	9.73%	0.04%	2.03%	0.36%	100.00%
2005	85.34%	1.89%	10.43%	0.06%	1.93%	0.35%	100.00%
2006	85.24%	1.88%	10.53%	0.03%	1.94%	0.37%	100.00%
2007	86.38%	1.62%	9.52%	0.04%	1.98%	0.45%	100.00%
2008	85.89%	1.57%	9.87%	0.04%	2.31%	0.33%	100.00%
2009	85.57%	1.81%	9.90%	0.04%	2.38%	0.30%	100.00%
2010	85.10%	1.86%	10.48%	0.03%	2.37%	0.15%	100.00%
5 Yr. Avg.	85.69%	1.75%	10.05%	0.04%	2.11%	0.36%	100.00%
10 Yr. Avg.	85.43%	1.79%	10.21%	0.05%	2.08%	0.44%	100.00%

Five year average is from years 2005 through 2009.

Ten year average is from years 2000 through 2009.

Bear Gulch District

Percent of Total Demand by Type of Use (2010)



California Water Service Company - Bear Gulch District
Water Supply and Demand Analysis and Projections
Percentage of Total Demand

Worksheet 9

Year	Residential	Multi Res	Commercial	Industrial	Government	Other	Unaccounted	Percent Total
1980	78.07%	2.06%	9.94%	0.26%	3.54%	0.93%	5.20%	100.00%
1981	79.29%	2.12%	10.14%	0.30%	3.42%	0.82%	3.91%	100.00%
1982	76.52%	2.31%	10.38%	0.29%	3.24%	0.85%	6.41%	100.00%
1983	77.30%	2.28%	10.90%	0.26%	2.68%	0.77%	5.80%	100.00%
1984	76.35%	2.13%	10.64%	0.22%	2.96%	0.72%	6.97%	100.00%
1985	77.50%	2.15%	10.70%	0.24%	2.94%	0.78%	5.70%	100.00%
1986	76.84%	2.15%	11.02%	0.25%	2.91%	0.66%	6.17%	100.00%
1987	78.23%	2.09%	10.91%	0.38%	2.78%	0.74%	4.86%	100.00%
1988	78.60%	2.18%	11.91%	0.14%	2.70%	0.98%	3.49%	100.00%
1989	76.68%	2.14%	11.62%	0.04%	2.34%	0.87%	6.31%	100.00%
1990	77.52%	2.16%	11.71%	0.03%	2.35%	0.83%	5.40%	100.00%
1991	77.23%	2.44%	12.78%	0.03%	1.99%	0.67%	4.85%	100.00%
1992	78.52%	2.31%	11.70%	0.04%	2.07%	0.62%	4.74%	100.00%
1993	79.01%	2.24%	11.58%	0.04%	1.95%	0.66%	4.52%	100.00%
1994	82.59%	2.24%	11.82%	0.04%	2.03%	0.70%	0.58%	100.00%
1995	79.36%	2.14%	11.52%	0.04%	2.01%	0.65%	4.29%	100.00%
1996	80.95%	2.05%	11.38%	0.04%	2.32%	0.74%	2.52%	100.00%
1997	81.08%	1.88%	10.60%	0.04%	2.20%	0.55%	3.65%	100.00%
1998	78.40%	2.11%	11.23%	0.03%	1.90%	0.84%	5.49%	100.00%
1999	79.65%	1.90%	10.68%	0.04%	2.10%	0.71%	4.92%	100.00%
2000	81.65%	1.90%	10.91%	0.05%	1.90%	0.98%	2.61%	100.00%
2001	82.33%	1.82%	10.42%	0.03%	1.92%	0.49%	2.99%	100.00%
2002	85.05%	1.72%	9.88%	0.06%	2.28%	0.35%	0.66%	100.00%
2003	83.22%	1.79%	9.93%	0.05%	1.98%	0.39%	2.64%	100.00%
2004	82.82%	1.66%	9.36%	0.04%	1.96%	0.35%	3.82%	100.00%
2005	83.43%	1.85%	10.20%	0.05%	1.89%	0.34%	2.24%	100.00%
2006	82.21%	1.81%	10.16%	0.03%	1.87%	0.36%	3.55%	100.00%
2007	81.01%	1.52%	8.93%	0.04%	1.86%	0.43%	6.21%	100.00%
2008	81.34%	1.49%	9.34%	0.03%	2.18%	0.32%	5.30%	100.00%
2009	81.24%	1.71%	9.40%	0.04%	2.26%	0.29%	5.06%	100.00%
2010	82.35%	1.80%	10.14%	0.03%	2.30%	0.15%	3.23%	100.00%
5 Yr. Avg.	81.85%	1.68%	9.61%	0.04%	2.01%	0.35%	4.47%	100.00%
10 Yr. Avg.	82.43%	1.73%	9.85%	0.04%	2.01%	0.43%	3.51%	100.00%

Five year average is from years 2005 through 2009.

Ten year average is from years 2000 through 2009.

California Water Service Company - Bear Gulch District

Water Supply and Demand Analysis and Projections

Worksheet 10

Scenario #1: Based on Maintaining Growth at the 10-Year 5-Year Average Annual Growth and Low Average High Demand per Service for each Customer Class.

Summary of Historical Growth Rate from Worksheet 2			
Customer Type	10 Yr. Avg. Historical Growth Rate	Individual Growth Rate Selected	Notes
Single Family Residential	0.445%	0.445%	Historical growth rate used
Multi Family Residential	1.818%	1.818%	Historical growth rate used
Commercial	0.720%	0.720%	Historical growth rate used
Industrial	0.000%	0.000%	Historical growth rate used
Government	1.889%	1.889%	Historical growth rate used
Other	-0.657%	-0.657%	Historical growth rate used
Overall	0.472%	0.484%	

Summary of Lowest Demand per Service from Worksheets 5 and 6									
Demand/Serv. Units	Multi-Residential			Commercial	Industrial	Government	Total Other	Unaccounted Total Serv.	Combined Demand/Serv.
	Residential	(service)	(unit)						
Gal/Service/Yr	149,218	1,137,553	56,922	293,231	987,429	549,604	689,007	1,238	176,074
AF/Service/Yr	0.458	3.491	0.175	0.900	3.030	1.687	2.114	0.004	0.540
Gal/Service/Day	409	3,117	156	803	2,705	1,506	1,888	3	482

California Water Service Company - Bear Gulch District
Water Supply and Demand Analysis and Projections

30-year projection Summary

Scenario #1: Based on Maintaining Growth at the 10-Year Average Annual Growth and Low Demand per Service for each Customer Class.
 5-Year Average High

Customer Type	Projected Services 2010	Projected Services 2015	Projected Services 2020	Projected Services 2025	Projected Services 2030	Projected Services 2035	Projected Services 2040	Services projected to be added from 2010 - 2040
Single Family Residential	16,572	16,944	17,325	17,714	18,111	18,518	18,934	2,361
Multi Family Residential	77	85	93	101	111	121	133	55
Commercial	1,380	1,430	1,482	1,537	1,593	1,651	1,711	331
Industrial	1	1	1	1	1	1	1	0
Government	118	130	143	156	172	189	207	89
Other	27	26	25	24	24	23	22	-5
Total	18,176	18,616	19,069	19,534	20,011	20,503	21,008	2,832

Customer Type	Projected Demand 2010 (ccf)	Projected Demand 2015 (ccf)	Projected Demand 2020 (ccf)	Projected Demand 2025 (ccf)	Projected Demand 2030 (ccf)	Projected Demand 2035 (ccf)	Projected Demand 2040 (ccf)	Projected demand to be added from 2010 - 2040 (ccf)
Single Family Residential	3,305,777	3,379,988	3,455,865	3,533,445	3,612,767	3,693,870	3,776,794	471,017
Multi Family Residential	117,673	128,765	140,904	154,186	168,720	184,625	202,029	84,356
Commercial	540,894	560,648	581,125	602,348	624,348	647,150	670,785	129,891
Industrial	1,320	1,320	1,320	1,320	1,320	1,320	1,320	0
Government	86,836	95,354	104,707	114,977	126,255	138,638	152,237	65,401
Other	24,705	23,904	23,129	22,380	21,654	20,952	20,273	-4,433
Unaccounted	30,089	30,818	31,567	32,337	33,128	33,941	34,778	4,689
Total	4,107,294	4,220,798	4,338,616	4,460,993	4,588,192	4,720,497	4,858,215	750,921

Customer Type	Projected Demand 2010 (AF)	Projected Demand 2015 (AF)	Projected Demand 2020 (AF)	Projected Demand 2025 (AF)	Projected Demand 2030 (AF)	Projected Demand 2035 (AF)	Projected Demand 2040 (AF)	Projected demand to be added from 2010 - 2040 (AF)
Single Family Residential	7,589	7,759	7,934	8,112	8,294	8,480	8,670	1,081
Multi Family Residential	270	296	323	354	387	424	464	194
Commercial	1,242	1,287	1,334	1,383	1,433	1,486	1,540	298
Industrial	3	3	3	3	3	3	3	0
Government	199	219	240	264	290	318	349	150
Other	57	55	53	51	50	48	47	-10
Unaccounted	69	71	72	74	76	78	80	11
Total	9,429	9,690	9,960	10,241	10,533	10,837	11,153	1,724
	8.42	8.65	8.89	9.14	9.40	9.67	9.96	

California Water Service Company - Bear Gulch District

Water Supply and Demand Analysis and Projections

Worksheet 10

2000's Projections

Scenario #1: Based on Maintaining Growth at the 10-Year 5-Year Average Annual Growth and Low Average High Demand per Service for each Customer Class.

Customer Type	Actual Services 2001	Actual Services 2002	Actual Services 2003	Actual Services 2004	Actual Services 2005	Actual Services 2006	Actual Services 2007	Actual Services 2008	Actual Services 2009	Projected Services 2010
Residential	15,875	15,919	15,890	15,911	16,134	16,255	16,260	16,252	16,499	16,572
Multi-Residential	64	64	64	64	64	63	63	71	76	77
Commercial	1,281	1,280	1,278	1,277	1,284	1,283	1,289	1,333	1,370	1,380
Industrial	1	1	1	1	1	1	1	1	1	1
Government	95	95	96	97	95	96	96	107	116	118
Other	39	41	31	35	30	27	36	32	27	27
Total	17,355	17,400	17,360	17,385	17,608	17,725	17,745	17,797	18,089	18,176

Customer Type	Demand 2001 (ccf)	Demand 2002 (ccf)	Demand 2003 (ccf)	Demand 2004 (ccf)	Demand 2005 (ccf)	Demand 2006 (ccf)	Demand 2007 (ccf)	Demand 2008 (ccf)	Demand 2009 (ccf)	Demand 2010 (ccf)
Residential	3,166,659	3,175,436	3,169,651	3,173,840	3,218,323	3,242,460	3,243,457	3,241,911	3,291,131	3,305,777
Multi-Residential	97,324	97,324	97,324	97,324	97,324	95,803	95,803	107,968	115,572	117,673
Commercial	502,140	501,748	500,964	500,572	503,316	502,924	505,276	522,622	537,027	540,894
Industrial	1,320	1,320	1,320	1,320	1,320	1,320	1,320	1,320	1,320	1,320
Government	69,797	69,797	70,532	71,267	69,797	70,532	70,532	78,614	85,226	86,836
Other	35,922	37,764	28,553	32,237	27,632	24,869	33,158	29,474	24,869	24,705
Unaccounted	28,730	28,805	28,739	28,780	29,149	29,343	29,376	29,461	29,945	30,089
Total	3,901,892	3,912,194	3,897,083	3,905,340	3,946,861	3,967,250	3,978,922	4,011,370	4,085,091	4,107,294

Customer Type	Demand 2001 (AF)	Demand 2002 (AF)	Demand 2003 (AF)	Demand 2004 (AF)	Demand 2005 (AF)	Demand 2006 (AF)	Demand 2007 (AF)	Demand 2008 (AF)	Demand 2009 (AF)	Demand 2010 (AF)
Residential	7,270	7,290	7,277	7,286	7,388	7,444	7,446	7,442	7,555	7,589
Multi-Residential	223	223	223	223	223	220	220	248	265	270
Commercial	1,153	1,152	1,150	1,149	1,155	1,155	1,160	1,200	1,233	1,242
Industrial	3	3	3	3	3	3	3	3	3	3
Government	160	160	162	164	160	162	162	180	196	199
Other	82	87	66	74	63	57	76	68	57	57
Unaccounted	66	66	66	66	67	67	67	68	69	69
Total	8,958	8,981	8,947	8,965	9,061	9,108	9,134	9,209	9,378	9,429

California Water Service Company - Bear Gulch District

Water Supply and Demand Analysis and Projections

Worksheet 10

2010's Projections

Scenario #1: Based on Maintaining Growth at the 10-Year Average Annual Growth and Average Demand per Service for each Customer Class.
 5-Year High

Customer Type	Projected Services 2011	Projected Services 2012	Projected Services 2013	Projected Services 2014	Projected Services 2015	Projected Services 2016	Projected Services 2017	Projected Services 2018	Projected Services 2019	Projected Services 2020
Residential	16,646	16,720	16,795	16,869	16,944	17,020	17,096	17,172	17,248	17,325
Multi-Residential	79	80	82	83	85	86	88	89	91	93
Commercial	1,390	1,400	1,410	1,420	1,430	1,441	1,451	1,461	1,472	1,482
Industrial	1	1	1	1	1	1	1	1	1	1
Government	120	123	125	127	130	132	135	137	140	143
Other	27	26	26	26	26	26	26	25	25	25
Total	18,263	18,350	18,439	18,527	18,616	18,706	18,796	18,886	18,977	19,069

Customer Type	Demand 2011 (ccf)	Demand 2012 (ccf)	Demand 2013 (ccf)	Demand 2014 (ccf)	Demand 2015 (ccf)	Demand 2016 (ccf)	Demand 2017 (ccf)	Demand 2018 (ccf)	Demand 2019 (ccf)	Demand 2020 (ccf)
Residential	3,320,488	3,335,264	3,350,106	3,365,014	3,379,988	3,395,029	3,410,137	3,425,312	3,440,555	3,455,865
Multi-Residential	119,812	121,990	124,208	126,466	128,765	131,106	133,490	135,917	138,388	140,904
Commercial	544,788	548,711	552,661	556,641	560,648	564,685	568,751	572,846	576,970	581,125
Industrial	1,320	1,320	1,320	1,320	1,320	1,320	1,320	1,320	1,320	1,320
Government	88,477	90,148	91,851	93,586	95,354	97,155	98,990	100,860	102,765	104,707
Other	24,543	24,382	24,222	24,062	23,904	23,747	23,591	23,436	23,282	23,129
Unaccounted	30,233	30,378	30,524	30,671	30,818	30,966	31,115	31,265	31,416	31,567
Total	4,129,661	4,152,193	4,174,892	4,197,760	4,220,798	4,244,009	4,267,394	4,290,956	4,314,696	4,338,616

Customer Type	Demand 2011 (AF)	Demand 2012 (AF)	Demand 2013 (AF)	Demand 2014 (AF)	Demand 2015 (AF)	Demand 2016 (AF)	Demand 2017 (AF)	Demand 2018 (AF)	Demand 2019 (AF)	Demand 2020 (AF)
Residential	7,623	7,657	7,691	7,725	7,759	7,794	7,829	7,863	7,898	7,934
Multi-Residential	275	280	285	290	296	301	306	312	318	323
Commercial	1,251	1,260	1,269	1,278	1,287	1,296	1,306	1,315	1,325	1,334
Industrial	3	3	3	3	3	3	3	3	3	3
Government	203	207	211	215	219	223	227	232	236	240
Other	56	56	56	55	55	55	54	54	53	53
Unaccounted	69	70	70	70	71	71	71	72	72	72
Total	9,480	9,532	9,584	9,637	9,690	9,743	9,797	9,851	9,905	9,960

California Water Service Company - Bear Gulch District
Water Supply and Demand Analysis and Projections

2020's Projections

Scenario #1: Based on Maintaining Growth at the 10-Year 5-Year Average Annual Growth and Low Average High Demand per Service for each Customer Class.

Customer Type	Projected Services 2021	Projected Services 2022	Projected Services 2023	Projected Services 2024	Projected Services 2025	Projected Services 2026	Projected Services 2027	Projected Services 2028	Projected Services 2029	Projected Services 2030
Residential	17,402	17,479	17,557	17,635	17,714	17,793	17,872	17,951	18,031	18,111
Multi-Residential	94	96	98	100	101	103	105	107	109	111
Commercial	1,493	1,504	1,515	1,526	1,537	1,548	1,559	1,570	1,581	1,593
Industrial	1	1	1	1	1	1	1	1	1	1
Government	145	148	151	154	156	159	162	166	169	172
Other	25	25	25	24	24	24	24	24	24	24
Total	19,161	19,253	19,346	19,440	19,534	19,628	19,723	19,819	19,915	20,011

Customer Type	Demand 2021 (ccf)	Demand 2022 (ccf)	Demand 2023 (ccf)	Demand 2024 (ccf)	Demand 2025 (ccf)	Demand 2026 (ccf)	Demand 2027 (ccf)	Demand 2028 (ccf)	Demand 2029 (ccf)	Demand 2030 (ccf)
Residential	3,471,244	3,486,691	3,502,206	3,517,791	3,533,445	3,549,169	3,564,963	3,580,827	3,596,762	3,612,767
Multi-Residential	143,465	146,073	148,729	151,433	154,186	156,989	159,843	162,749	165,708	168,720
Commercial	585,309	589,523	593,767	598,043	602,348	606,685	611,053	615,453	619,884	624,348
Industrial	1,320	1,320	1,320	1,320	1,320	1,320	1,320	1,320	1,320	1,320
Government	106,685	108,700	110,753	112,845	114,977	117,149	119,362	121,617	123,914	126,255
Other	22,977	22,826	22,676	22,528	22,380	22,232	22,086	21,941	21,797	21,654
Unaccounted	31,719	31,872	32,026	32,181	32,337	32,493	32,651	32,809	32,968	33,128
Total	4,362,719	4,387,006	4,411,479	4,436,141	4,460,993	4,486,038	4,511,278	4,536,716	4,562,353	4,588,192

Customer Type	Demand 2021 (AF)	Demand 2022 (AF)	Demand 2023 (AF)	Demand 2024 (AF)	Demand 2025 (AF)	Demand 2026 (AF)	Demand 2027 (AF)	Demand 2028 (AF)	Demand 2029 (AF)	Demand 2030 (AF)
Residential	7,969	8,004	8,040	8,076	8,112	8,148	8,184	8,221	8,257	8,294
Multi-Residential	329	335	341	348	354	360	367	374	380	387
Commercial	1,344	1,353	1,363	1,373	1,383	1,393	1,403	1,413	1,423	1,433
Industrial	3	3	3	3	3	3	3	3	3	3
Government	245	250	254	259	264	269	274	279	284	290
Other	53	52	52	52	51	51	51	50	50	50
Unaccounted	73	73	74	74	74	75	75	75	76	76
Total	10,015	10,071	10,127	10,184	10,241	10,299	10,357	10,415	10,474	10,533

California Water Service Company - Bear Gulch District
Water Supply and Demand Analysis and Projections

2030's Projections

Scenario #1: Based on Maintaining Growth at the 10-Year Average Annual Growth and Low Demand per Service for each Customer Class.
 5-Year Average High

Customer Type	Projected Services 2031	Projected Services 2032	Projected Services 2033	Projected Services 2034	Projected Services 2035	Projected Services 2036	Projected Services 2037	Projected Services 2038	Projected Services 2039	Projected Services 2040
Residential	18,192	18,273	18,354	18,436	18,518	18,600	18,683	18,766	18,850	18,934
Multi-Residential	113	115	117	119	121	124	126	128	130	133
Commercial	1,604	1,616	1,627	1,639	1,651	1,663	1,675	1,687	1,699	1,711
Industrial	1	1	1	1	1	1	1	1	1	1
Government	175	178	182	185	189	192	196	200	203	207
Other	23	23	23	23	23	23	22	22	22	22
Total	20,109	20,206	20,305	20,403	20,503	20,603	20,703	20,804	20,906	21,008

Customer Type	Demand 2031 (ccf)	Demand 2032 (ccf)	Demand 2033 (ccf)	Demand 2034 (ccf)	Demand 2035 (ccf)	Demand 2036 (ccf)	Demand 2037 (ccf)	Demand 2038 (ccf)	Demand 2039 (ccf)	Demand 2040 (ccf)
Residential	3,628,844	3,644,993	3,661,213	3,677,505	3,693,870	3,710,308	3,726,819	3,743,403	3,760,061	3,776,794
Multi-Residential	171,788	174,911	178,091	181,328	184,625	187,981	191,399	194,879	198,421	202,029
Commercial	628,843	633,370	637,931	642,524	647,150	651,809	656,503	661,229	665,990	670,785
Industrial	1,320	1,320	1,320	1,320	1,320	1,320	1,320	1,320	1,320	1,320
Government	128,640	131,070	133,545	136,068	138,638	141,257	143,926	146,644	149,415	152,237
Other	21,512	21,370	21,230	21,090	20,952	20,814	20,677	20,542	20,407	20,273
Unaccounted	33,289	33,451	33,613	33,777	33,941	34,107	34,273	34,440	34,608	34,778
Total	4,614,235	4,640,484	4,666,943	4,693,613	4,720,497	4,747,597	4,774,916	4,802,457	4,830,223	4,858,215

Customer Type	Demand 2031 (AF)	Demand 2032 (AF)	Demand 2033 (AF)	Demand 2034 (AF)	Demand 2035 (AF)	Demand 2036 (AF)	Demand 2037 (AF)	Demand 2038 (AF)	Demand 2039 (AF)	Demand 2040 (AF)
Residential	8,331	8,368	8,405	8,442	8,480	8,518	8,556	8,594	8,632	8,670
Multi-Residential	394	402	409	416	424	432	439	447	456	464
Commercial	1,444	1,454	1,464	1,475	1,486	1,496	1,507	1,518	1,529	1,540
Industrial	3	3	3	3	3	3	3	3	3	3
Government	295	301	307	312	318	324	330	337	343	349
Other	49	49	49	48	48	48	47	47	47	47
Unaccounted	76	77	77	78	78	78	79	79	79	80
Total	10,593	10,653	10,714	10,775	10,837	10,899	10,962	11,025	11,089	11,153

**California Water Service Company - Bear Gulch District
Water Supply and Demand Analysis and Projections**

Worksheet 10

Scenario #2: Based on Maintaining Growth at the 10-Year 5-Year Average Annual Growth and Low Average High Demand per Service for each Customer Class.

Summary of Historical Growth Rate from Worksheet 2			
Customer Type	10 Yr. Avg. Historical Growth Rate	Individual Growth Rate Selected	Notes
Single Family Residential	0.445%	0.445%	Historical growth rate used
Multi Family Residential	1.818%	1.818%	Historical growth rate used
Commercial	0.720%	0.720%	Historical growth rate used
Industrial	0.000%	0.000%	Historical growth rate used
Government	1.889%	1.889%	Historical growth rate used
Other	-0.657%	-0.657%	Historical growth rate used
Overall	0.472%	0.484%	

Summary of Average Demand per Service from Worksheets 5 and 6									
Demand/Serv. Units	Multi-Residential						Total Other	Unaccounted Total Serv.	Combined Demand/Serv.
	Residential	(service)	(unit)	Commercial	Industrial	Government			
Gal/Service/Yr	214,934	1,319,342	65,659	367,888	1,469,174	998,907	1,131,775	6,127	242,655
AF/Service/Yr	0.660	4.049	0.202	1.129	4.509	3.066	3.473	0.019	0.745
Gal/Service/Day	589	3,615	180	1,008	4,025	2,737	3,101	17	665

California Water Service Company - Bear Gulch District
Water Supply and Demand Analysis and Projections

30-year projection Summary

Scenario #2: Based on Maintaining Growth at the 10-Year 5-Year Average Annual Growth and Low Average High Demand per Service for each Customer Class.

Customer Type	Projected Services 2010	Projected Services 2015	Projected Services 2020	Projected Services 2025	Projected Services 2030	Projected Services 2035	Projected Services 2040	Services projected to be added from 2010 - 2040
Single Family Residential	16,572	16,944	17,325	17,714	18,111	18,518	18,934	2,361
Multi Family Residential	77	85	93	101	111	121	133	55
Commercial	1,380	1,430	1,482	1,537	1,593	1,651	1,711	331
Industrial	1	1	1	1	1	1	1	0
Government	118	130	143	156	172	189	207	89
Other	27	26	25	24	24	23	22	-5
Total	18,176	18,616	19,069	19,534	20,011	20,503	21,008	2,832

Customer Type	Projected Demand 2010 (ccf)	Projected Demand 2015 (ccf)	Projected Demand 2020 (ccf)	Projected Demand 2025 (ccf)	Projected Demand 2030 (ccf)	Projected Demand 2035 (ccf)	Projected Demand 2040 (ccf)	Projected demand to be added from 2010 - 2040 (ccf)
Single Family Residential	4,761,652	4,868,546	4,977,839	5,089,586	5,203,842	5,320,663	5,440,106	678,454
Multi Family Residential	136,478	149,343	163,421	178,826	195,683	214,129	234,314	97,837
Commercial	678,606	703,390	729,080	755,707	783,307	811,915	841,568	162,962
Industrial	1,964	1,964	1,964	1,964	1,964	1,964	1,964	0
Government	157,825	173,306	190,305	208,971	229,468	251,976	276,691	118,866
Other	40,581	39,266	37,993	36,761	35,569	34,416	33,300	-7,281
Unaccounted	148,864	152,472	156,178	159,986	163,900	167,924	172,062	23,198
Total	5,925,971	6,088,286	6,256,779	6,431,801	6,613,733	6,802,987	7,000,005	1,074,035

Customer Type	Projected Demand 2010 (AF)	Projected Demand 2015 (AF)	Projected Demand 2020 (AF)	Projected Demand 2025 (AF)	Projected Demand 2030 (AF)	Projected Demand 2035 (AF)	Projected Demand 2040 (AF)	Projected demand to be added from 2010 - 2040 (AF)
Single Family Residential	10,931	11,177	11,428	11,684	11,946	12,215	12,489	1,558
Multi Family Residential	313	343	375	411	449	492	538	225
Commercial	1,558	1,615	1,674	1,735	1,798	1,864	1,932	374
Industrial	5	5	5	5	5	5	5	0
Government	362	398	437	480	527	578	635	273
Other	93	90	87	84	82	79	76	-17
Unaccounted	342	350	359	367	376	386	395	53
Total	13,604	13,977	14,364	14,765	15,183	15,618	16,070	2,466
	12.15	12.48	12.82	13.18	13.55	13.94	14.35	

California Water Service Company - Bear Gulch District

Water Supply and Demand Analysis and Projections

Worksheet 11

2000's Projections

Scenario #2: Based on Maintaining Growth at the 10-Year 5-Year Average Annual Growth and Low Average High Demand per Service for each Customer Class.

Customer Type	Actual Services 2001	Actual Services 2002	Actual Services 2003	Actual Services 2004	Actual Services 2005	Actual Services 2006	Actual Services 2007	Actual Services 2008	Actual Services 2009	Projected Services 2010
Residential	15,875	15,919	15,890	15,911	16,134	16,255	16,260	16,252	16,499	16,572
Multi-Residential	64	64	64	64	64	63	63	71	76	77
Commercial	1,281	1,280	1,278	1,277	1,284	1,283	1,289	1,333	1,370	1,380
Industrial	1	1	1	1	1	1	1	1	1	1
Government	95	95	96	97	95	96	96	107	116	118
Other	39	41	31	35	30	27	36	32	27	27
Total	17,355	17,400	17,360	17,385	17,608	17,725	17,745	17,797	18,089	18,176

Customer Type	Demand 2001(ccf)	Demand 2002(ccf)	Demand 2003(ccf)	Demand 2004(ccf)	Demand 2005(ccf)	Demand 2006(ccf)	Demand 2007(ccf)	Demand 2008(ccf)	Demand 2009(ccf)	Demand 2010(ccf)
Residential	4,561,266	4,573,909	4,565,576	4,571,610	4,635,683	4,670,449	4,671,886	4,669,659	4,740,556	4,761,652
Multi-Residential	112,877	112,877	112,877	112,877	112,877	111,113	111,113	125,222	134,041	136,478
Commercial	629,986	629,494	628,510	628,018	631,461	630,969	633,920	655,682	673,755	678,606
Industrial	1,964	1,964	1,964	1,964	1,964	1,964	1,964	1,964	1,964	1,964
Government	126,857	126,857	128,192	129,528	126,857	128,192	128,192	142,881	154,899	157,825
Other	59,005	62,031	46,902	52,953	45,389	40,850	54,466	48,415	40,850	40,581
Unaccounted	142,143	142,511	142,183	142,388	144,215	145,173	145,337	145,759	148,154	148,864
Total	5,634,097	5,649,642	5,626,205	5,639,338	5,698,445	5,728,711	5,746,878	5,789,582	5,894,220	5,925,971

Customer Type	Demand 2001(AF)	Demand 2002(AF)	Demand 2003(AF)	Demand 2004(AF)	Demand 2005(AF)	Demand 2006(AF)	Demand 2007(AF)	Demand 2008(AF)	Demand 2009(AF)	Demand 2010(AF)
Residential	10,471	10,500	10,481	10,495	10,642	10,722	10,725	10,720	10,883	10,931.3
Multi-Residential	259	259	259	259	259	255	255	287	308	313.3
Commercial	1,446	1,445	1,443	1,442	1,450	1,449	1,455	1,505	1,547	1,557.9
Industrial	5	5	5	5	5	5	5	5	5	4.5
Government	291	291	294	297	291	294	294	328	356	362.3
Other	135	142	108	122	104	94	125	111	94	93.2
Unaccounted	326	327	326	327	331	333	334	335	340	341.7
Total	12,934	12,970	12,916	12,946	13,082	13,151	13,193	13,291	13,531	13,604.2

California Water Service Company - Bear Gulch District
Water Supply and Demand Analysis and Projections

Worksheet 11

2010's Projections

Scenario #2: Based on Maintaining Growth at the 10-Year Average Annual Growth and Average Demand per Service for each Customer Class.
 5-Year Low High

Customer Type	Projected Services 2011	Projected Services 2012	Projected Services 2013	Projected Services 2014	Projected Services 2015	Projected Services 2016	Projected Services 2017	Projected Services 2018	Projected Services 2019	Projected Services 2020
Residential	16,646	16,720	16,795	16,869	16,944	17,020	17,096	17,172	17,248	17,325
Multi-Residential	79	80	82	83	85	86	88	89	91	93
Commercial	1,390	1,400	1,410	1,420	1,430	1,441	1,451	1,461	1,472	1,482
Industrial	1	1	1	1	1	1	1	1	1	1
Government	120	123	125	127	130	132	135	137	140	143
Other	27	26	26	26	26	26	26	25	25	25
Total	18,263	18,350	18,439	18,527	18,616	18,706	18,796	18,886	18,977	19,069

Customer Type	Demand 2011(ccf)	Demand 2012(ccf)	Demand 2003(ccf)	Demand 2014(ccf)	Demand 2015(ccf)	Demand 2016(ccf)	Demand 2017(ccf)	Demand 2018(ccf)	Demand 2019(ccf)	Demand 2020(ccf)
Residential	4,782,841	4,804,125	4,825,503	4,846,977	4,868,546	4,890,211	4,911,972	4,933,830	4,955,786	4,977,839
Multi-Residential	138,959	141,485	144,057	146,676	149,343	152,058	154,822	157,637	160,503	163,421
Commercial	683,492	688,413	693,370	698,362	703,390	708,455	713,556	718,693	723,868	729,080
Industrial	1,964	1,964	1,964	1,964	1,964	1,964	1,964	1,964	1,964	1,964
Government	160,807	163,844	166,939	170,093	173,306	176,580	179,915	183,314	186,777	190,305
Other	40,315	40,050	39,787	39,525	39,266	39,008	38,751	38,497	38,244	37,993
Unaccounted	149,578	150,295	151,017	151,742	152,472	153,205	153,942	154,683	155,428	156,178
Total	5,957,956	5,990,177	6,022,637	6,055,340	6,088,286	6,121,479	6,154,923	6,188,618	6,222,569	6,256,779

Customer Type	Demand 2011(AF)	Demand 2012(AF)	Demand 2013(AF)	Demand 2014(AF)	Demand 2015(AF)	Demand 2016(AF)	Demand 2017(AF)	Demand 2018(AF)	Demand 2019(AF)	Demand 2020(AF)
Residential	10,980	11,029	11,078	11,127	11,177	11,226	11,276	11,327	11,377	11,428
Multi-Residential	319	325	331	337	343	349	355	362	368	375
Commercial	1,569	1,580	1,592	1,603	1,615	1,626	1,638	1,650	1,662	1,674
Industrial	5	5	5	5	5	5	5	5	5	5
Government	369	376	383	390	398	405	413	421	429	437
Other	93	92	91	91	90	90	89	88	88	87
Unaccounted	343	345	347	348	350	352	353	355	357	359
Total	13,678	13,752	13,826	13,901	13,977	14,053	14,130	14,207	14,285	14,364

California Water Service Company - Bear Gulch District
Water Supply and Demand Analysis and Projections

Worksheet 11

2020's Projections

Scenario #2: Based on Maintaining Growth at the 10-Year Average Annual Growth and Low Demand per Service for each Customer Class.
 5-Year Average High

Customer Type	Projected Services 2021	Projected Services 2022	Projected Services 2023	Projected Services 2024	Projected Services 2025	Projected Services 2026	Projected Services 2027	Projected Services 2028	Projected Services 2029	Projected Services 2030
Residential	17,402	17,479	17,557	17,635	17,714	17,793	17,872	17,951	18,031	18,111
Multi-Residential	94	96	98	100	101	103	105	107	109	111
Commercial	1,493	1,504	1,515	1,526	1,537	1,548	1,559	1,570	1,581	1,593
Industrial	1	1	1	1	1	1	1	1	1	1
Government	145	148	151	154	156	159	162	166	169	172
Other	25	25	25	24	24	24	24	24	24	24
Total	19,161	19,253	19,346	19,440	19,534	19,628	19,723	19,819	19,915	20,011

Customer Type	Demand 2021(ccf)	Demand 2022(ccf)	Demand 2023(ccf)	Demand 2024(ccf)	Demand 2025(ccf)	Demand 2026(ccf)	Demand 2027(ccf)	Demand 2028(ccf)	Demand 2029(ccf)	Demand 2030(ccf)
Residential	4,999,991	5,022,241	5,044,590	5,067,038	5,089,586	5,112,235	5,134,984	5,157,835	5,180,787	5,203,842
Multi-Residential	166,392	169,417	172,497	175,633	178,826	182,077	185,387	188,757	192,189	195,683
Commercial	734,329	739,616	744,941	750,305	755,707	761,148	766,629	772,148	777,708	783,307
Industrial	1,964	1,964	1,964	1,964	1,964	1,964	1,964	1,964	1,964	1,964
Government	193,900	197,562	201,294	205,097	208,971	212,918	216,941	221,039	225,214	229,468
Other	37,743	37,495	37,249	37,004	36,761	36,519	36,279	36,041	35,804	35,569
Unaccounted	156,931	157,688	158,450	159,216	159,986	160,760	161,538	162,321	163,108	163,900
Total	6,291,249	6,325,983	6,360,985	6,396,256	6,431,801	6,467,622	6,503,722	6,540,106	6,576,775	6,613,733

Customer Type	Demand 2021(AF)	Demand 2022(AF)	Demand 2023(AF)	Demand 2024(AF)	Demand 2025(AF)	Demand 2026(AF)	Demand 2027(AF)	Demand 2028(AF)	Demand 2029(AF)	Demand 2030(AF)
Residential	11,478	11,529	11,581	11,632	11,684	11,736	11,788	11,841	11,893	11,946
Multi-Residential	382	389	396	403	411	418	426	433	441	449
Commercial	1,686	1,698	1,710	1,722	1,735	1,747	1,760	1,773	1,785	1,798
Industrial	5	5	5	5	5	5	5	5	5	5
Government	445	454	462	471	480	489	498	507	517	527
Other	87	86	86	85	84	84	83	83	82	82
Unaccounted	360	362	364	366	367	369	371	373	374	376
Total	14,443	14,522	14,603	14,684	14,765	14,848	14,931	15,014	15,098	15,183

California Water Service Company - Bear Gulch District
Water Supply and Demand Analysis and Projections

2030's Projections

Scenario #2: Based on Maintaining Growth at the 10-Year Average Annual Growth and Average Demand per Service for each Customer Class.
 5-Year High

Customer Type	Projected Services 2031	Projected Services 2032	Projected Services 2033	Projected Services 2034	Projected Services 2035	Projected Services 2036	Projected Services 2037	Projected Services 2038	Projected Services 2039	Projected Services 2040
Residential	18,192	18,273	18,354	18,436	18,518	18,600	18,683	18,766	18,850	18,934
Multi-Residential	113	115	117	119	121	124	126	128	130	133
Commercial	1,604	1,616	1,627	1,639	1,651	1,663	1,675	1,687	1,699	1,711
Industrial	1	1	1	1	1	1	1	1	1	1
Government	175	178	182	185	189	192	196	200	203	207
Other	23	23	23	23	23	23	22	22	22	22
Total	20,109	20,206	20,305	20,403	20,503	20,603	20,703	20,804	20,906	21,008

Customer Type	Demand 2031(ccf)	Demand 2032(ccf)	Demand 2033(ccf)	Demand 2034(ccf)	Demand 2035(ccf)	Demand 2036(ccf)	Demand 2037(ccf)	Demand 2038(ccf)	Demand 2039(ccf)	Demand 2040(ccf)
Residential	5,226,999	5,250,259	5,273,623	5,297,090	5,320,663	5,344,339	5,368,122	5,392,010	5,416,004	5,440,106
Multi-Residential	199,241	202,863	206,551	210,306	214,129	218,022	221,986	226,021	230,130	234,314
Commercial	788,947	794,627	800,349	806,111	811,915	817,761	823,649	829,579	835,552	841,568
Industrial	1,964	1,964	1,964	1,964	1,964	1,964	1,964	1,964	1,964	1,964
Government	233,803	238,219	242,719	247,304	251,976	256,736	261,586	266,527	271,562	276,691
Other	35,335	35,103	34,873	34,644	34,416	34,190	33,965	33,742	33,520	33,300
Unaccounted	164,696	165,496	166,301	167,110	167,924	168,742	169,565	170,393	171,225	172,062
Total	6,650,985	6,688,532	6,726,379	6,764,530	6,802,987	6,841,754	6,880,836	6,920,236	6,959,958	7,000,005

Customer Type	Demand 2031(AF)	Demand 2032(AF)	Demand 2033(AF)	Demand 2034(AF)	Demand 2035(AF)	Demand 2036(AF)	Demand 2037(AF)	Demand 2038(AF)	Demand 2039(AF)	Demand 2040(AF)
Residential	12,000	12,053	12,107	12,160	12,215	12,269	12,324	12,378	12,433	12,489
Multi-Residential	457	466	474	483	492	501	510	519	528	538
Commercial	1,811	1,824	1,837	1,851	1,864	1,877	1,891	1,904	1,918	1,932
Industrial	5	5	5	5	5	5	5	5	5	5
Government	537	547	557	568	578	589	601	612	623	635
Other	81	81	80	80	79	78	78	77	77	76
Unaccounted	378	380	382	384	386	387	389	391	393	395
Total	15,269	15,355	15,442	15,529	15,618	15,707	15,796	15,887	15,978	16,070

California Water Service Company - Bear Gulch District

Water Supply and Demand Analysis and Projections

Worksheet 10

Scenario #2: Based on Maintaining Growth at the 10-Year Average Annual Growth and Low Demand per Service for each Customer Class.
 5-Year Average High

Summary of Historical Growth Rate from Worksheet 2			
Customer Type	10 Yr. Avg. Historical Growth Rate	Individual Growth Rate Selected	Notes
Single Family Residential	0.445%	0.445%	Historical growth rate used
Multi Family Residential	1.818%	1.818%	Historical growth rate used
Commercial	0.720%	0.720%	Historical growth rate used
Industrial	0.000%	0.000%	Historical growth rate used
Government	1.889%	1.889%	Historical growth rate used
Other	-0.657%	-0.657%	Historical growth rate used
Overall	0.472%	0.484%	

Summary of Maximum Demand per Service from Worksheets 5 and 6									
Demand/Serv. Units	Multi-Residential						Total Other	Unaccounted Total Serv.	Combined Demand/Serv.
	Residential	(service)	(unit)	Commercial	Industrial	Government			
Gal/Service/Yr	252,523	1,222,614	59,479	351,152	2,091,553	1,306,027	1,825,481	17,747	285,618
AF/Service/Yr	0.775	3.752	0.183	1.078	6.419	4.008	5.602	0.054	0.877
Gal/Service/Day	692	3,350	163	962	5,730	3,578	5,001	49	783

California Water Service Company - Bear Gulch District

Worksheet 10

Water Supply and Demand Analysis and Projections

30-year projection Summary

Scenario #2: Based on Maintaining Growth at the 10-Year Average Annual Growth and Low Demand per Service for each Customer Class.
 5-Year Average High

Customer Type	Projected Services 2010	Projected Services 2015	Projected Services 2020	Projected Services 2025	Projected Services 2030	Projected Services 2035	Projected Services 2040	Services projected to be added from 2010 - 2040
Single Family Residential	16,572	16,944	17,325	17,714	18,111	18,518	18,934	2,361
Multi Family Residential	77	85	93	101	111	121	133	55
Commercial	1,380	1,430	1,482	1,537	1,593	1,651	1,711	331
Industrial	1	1	1	1	1	1	1	0
Government	118	130	143	156	172	189	207	89
Other	27	26	25	24	24	23	22	-5
Total	18,176	18,616	19,069	19,534	20,011	20,503	21,008	2,832

Customer Type	Projected Demand 2010 (ccf)	Projected Demand 2015 (ccf)	Projected Demand 2020 (ccf)	Projected Demand 2025 (ccf)	Projected Demand 2030 (ccf)	Projected Demand 2035 (ccf)	Projected Demand 2040 (ccf)	Projected demand to be added from 2010 - 2040 (ccf)
Single Family Residential	5,594,399	5,719,987	5,848,395	5,979,685	6,113,922	6,251,173	6,391,505	797,106
Multi Family Residential	126,472	138,394	151,440	165,715	181,336	198,430	217,135	90,664
Commercial	647,736	671,393	695,913	721,330	747,674	774,981	803,285	155,549
Industrial	2,796	2,796	2,796	2,796	2,796	2,796	2,796	0
Government	206,350	226,590	248,815	273,221	300,020	329,448	361,762	155,412
Other	65,455	63,333	61,280	59,293	57,371	55,511	53,711	-11,744
Unaccounted	431,200	441,649	452,384	463,415	474,753	486,408	498,394	67,194
Total	7,074,408	7,264,142	7,461,023	7,665,454	7,877,872	8,098,747	8,328,589	1,254,180

Customer Type	Projected Demand 2010 (AF)	Projected Demand 2015 (AF)	Projected Demand 2020 (AF)	Projected Demand 2025 (AF)	Projected Demand 2030 (AF)	Projected Demand 2035 (AF)	Projected Demand 2040 (AF)	Projected demand to be added from 2010 - 2040 (AF)
Single Family Residential	12,843	13,131	13,426	13,727	14,036	14,351	14,673	1,830
Multi Family Residential	290	318	348	380	416	456	498	208
Commercial	1,487	1,541	1,598	1,656	1,716	1,779	1,844	357
Industrial	6	6	6	6	6	6	6	0
Government	474	520	571	627	689	756	830	357
Other	150	145	141	136	132	127	123	-27
Unaccounted	990	1,014	1,039	1,064	1,090	1,117	1,144	154
Total	16,241	16,676	17,128	17,597	18,085	18,592	19,120	2,879
	14.50	14.89	15.29	15.71	16.15	16.60	17.07	

California Water Service Company - Bear Gulch District

Water Supply and Demand Analysis and Projections

Worksheet 12

2000's Projections

Scenario #3: Based on Maintaining Growth at the

-
- 10-Year
-
-
- 5-Year

Average Annual Growth and

-
- Low
-
-
- Average
-
-
- High

Demand per Service for each Customer Class.

Customer Type	Actual Services 2001	Actual Services 2002	Actual Services 2003	Actual Services 2004	Actual Services 2005	Actual Services 2006	Actual Services 2007	Actual Services 2008	Actual Services 2009	Projected Services 2010
Residential	15,875	15,919	15,890	15,911	16,134	16,255	16,260	16,252	16,499	16,572
Multi-Residential	64	64	64	64	64	63	63	71	76	77
Commercial	1,281	1,280	1,278	1,277	1,284	1,283	1,289	1,333	1,370	1,380
Industrial	1	1	1	1	1	1	1	1	1	1
Government	95	95	96	97	95	96	96	107	116	118
Other	39	41	31	35	30	27	36	32	27	27
Total	17,355	17,400	17,360	17,385	17,608	17,725	17,745	17,797	18,089	18,176

Customer Type	Demand 2001(ccf)	Demand 2002(ccf)	Demand 2003(ccf)	Demand 2004(ccf)	Demand 2005(ccf)	Demand 2006(ccf)	Demand 2007(ccf)	Demand 2008(ccf)	Demand 2009(ccf)	Demand 2010(ccf)
Residential	5,358,969	5,373,822	5,364,033	5,371,122	5,446,400	5,487,247	5,488,935	5,486,318	5,569,614	5,594,399
Multi-Residential	104,601	104,601	104,601	104,601	104,601	102,967	102,967	116,042	124,214	126,472
Commercial	601,327	600,858	599,919	599,449	602,735	602,266	605,083	625,854	643,106	647,736
Industrial	2,796	2,796	2,796	2,796	2,796	2,796	2,796	2,796	2,796	2,796
Government	165,860	165,860	167,606	169,352	165,860	167,606	167,606	186,811	202,524	206,350
Other	95,172	100,052	75,649	85,411	73,209	65,888	87,851	78,090	65,888	65,455
Unaccounted	411,730	412,798	411,849	412,442	417,732	420,508	420,983	422,204	429,144	431,200
Total	6,740,455	6,760,787	6,726,453	6,745,173	6,813,335	6,849,278	6,876,219	6,918,116	7,037,286	7,074,408

Customer Type	Demand 2001(AF)	Demand 2002(AF)	Demand 2003(AF)	Demand 2004(AF)	Demand 2005(AF)	Demand 2006(AF)	Demand 2007(AF)	Demand 2008(AF)	Demand 2009(AF)	Demand 2010(AF)
Residential	12,303	12,337	12,314	12,330	12,503	12,597	12,601	12,595	12,786	12,843
Multi-Residential	240	240	240	240	240	236	236	266	285	290
Commercial	1,380	1,379	1,377	1,376	1,384	1,383	1,389	1,437	1,476	1,487
Industrial	6	6	6	6	6	6	6	6	6	6
Government	381	381	385	389	381	385	385	429	465	474
Other	218	230	174	196	168	151	202	179	151	150
Unaccounted	945	948	945	947	959	965	966	969	985	990
Total	15,474	15,521	15,442	15,485	15,641	15,724	15,786	15,882	16,155	16,241

California Water Service Company - Bear Gulch District
Water Supply and Demand Analysis and Projections

2010's Projections

Scenario #3: Based on Maintaining Growth at the

- 10-Year
- 5-Year

Average Annual Growth and

- Low
- Average
- High

Demand per Service for each Customer Class.

Customer Type	Projected Services 2011	Projected Services 2012	Projected Services 2013	Projected Services 2014	Projected Services 2015	Projected Services 2016	Projected Services 2017	Projected Services 2018	Projected Services 2019	Projected Services 2020
Residential	16,646	16,720	16,795	16,869	16,944	17,020	17,096	17,172	17,248	17,325
Multi-Residential	79	80	82	83	85	86	88	89	91	93
Commercial	1,390	1,400	1,410	1,420	1,430	1,441	1,451	1,461	1,472	1,482
Industrial	1	1	1	1	1	1	1	1	1	1
Government	120	123	125	127	130	132	135	137	140	143
Other	27	26	26	26	26	26	26	25	25	25
Total	18,263	18,350	18,439	18,527	18,616	18,706	18,796	18,886	18,977	19,069

Customer Type	Demand 2011(ccf)	Demand 2012(ccf)	Demand 2013(ccf)	Demand 2014(ccf)	Demand 2015(ccf)	Demand 2016(ccf)	Demand 2017(ccf)	Demand 2018(ccf)	Demand 2019(ccf)	Demand 2020(ccf)
Residential	5,619,294	5,644,300	5,669,417	5,694,646	5,719,987	5,745,441	5,771,009	5,796,690	5,822,485	5,848,395
Multi-Residential	128,771	131,112	133,496	135,923	138,394	140,910	143,472	146,080	148,736	151,440
Commercial	652,400	657,097	661,828	666,593	671,393	676,227	681,095	685,999	690,939	695,913
Industrial	2,796	2,796	2,796	2,796	2,796	2,796	2,796	2,796	2,796	2,796
Government	210,248	214,219	218,266	222,389	226,590	230,870	235,231	239,675	244,202	248,815
Other	65,025	64,598	64,174	63,752	63,333	62,917	62,504	62,093	61,685	61,280
Unaccounted	433,268	435,346	437,436	439,537	441,649	443,773	445,908	448,055	450,214	452,384
Total	7,111,802	7,149,469	7,187,413	7,225,636	7,264,142	7,302,934	7,342,015	7,381,388	7,421,056	7,461,023

Customer Type	Demand 2011(AF)	Demand 2012(AF)	Demand 2013(AF)	Demand 2014(AF)	Demand 2015(AF)	Demand 2016(AF)	Demand 2017(AF)	Demand 2018(AF)	Demand 2019(AF)	Demand 2020(AF)
Residential	12,900	12,958	13,015	13,073	13,131	13,190	13,248	13,307	13,367	13,426
Multi-Residential	296	301	306	312	318	323	329	335	341	348
Commercial	1,498	1,508	1,519	1,530	1,541	1,552	1,564	1,575	1,586	1,598
Industrial	6	6	6	6	6	6	6	6	6	6
Government	483	492	501	511	520	530	540	550	561	571
Other	149	148	147	146	145	144	143	143	142	141
Unaccounted	995	999	1,004	1,009	1,014	1,019	1,024	1,029	1,034	1,039
Total	16,326	16,413	16,500	16,588	16,676	16,765	16,855	16,945	17,036	17,128

California Water Service Company - Bear Gulch District
Water Supply and Demand Analysis and Projections

2020's Projections

Scenario #3: Based on Maintaining Growth at the 10-Year Average Annual Growth and Low Demand per Service for each Customer Class.
 5-Year Average High

Customer Type	Projected Services 2021	Projected Services 2022	Projected Services 2023	Projected Services 2024	Projected Services 2025	Projected Services 2026	Projected Services 2027	Projected Services 2028	Projected Services 2029	Projected Services 2030
Residential	17,402	17,479	17,557	17,635	17,714	17,793	17,872	17,951	18,031	18,111
Multi-Residential	94	96	98	100	101	103	105	107	109	111
Commercial	1,493	1,504	1,515	1,526	1,537	1,548	1,559	1,570	1,581	1,593
Industrial	1	1	1	1	1	1	1	1	1	1
Government	145	148	151	154	156	159	162	166	169	172
Other	25	25	25	24	24	24	24	24	24	24
Total	19,161	19,253	19,346	19,440	19,534	19,628	19,723	19,819	19,915	20,011

Customer Type	Demand 2021(ccf)	Demand 2022(ccf)	Demand 2023(ccf)	Demand 2024(ccf)	Demand 2025(ccf)	Demand 2026(ccf)	Demand 2027(ccf)	Demand 2028(ccf)	Demand 2029(ccf)	Demand 2030(ccf)
Residential	5,874,420	5,900,561	5,926,819	5,953,193	5,979,685	6,006,295	6,033,023	6,059,870	6,086,836	6,113,922
Multi-Residential	154,193	156,996	159,850	162,756	165,715	168,728	171,795	174,919	178,099	181,336
Commercial	700,924	705,971	711,054	716,173	721,330	726,523	731,754	737,023	742,329	747,674
Industrial	2,796	2,796	2,796	2,796	2,796	2,796	2,796	2,796	2,796	2,796
Government	253,515	258,304	263,184	268,155	273,221	278,382	283,640	288,998	294,458	300,020
Other	60,877	60,477	60,080	59,685	59,293	58,903	58,516	58,132	57,750	57,371
Unaccounted	454,566	456,760	458,967	461,185	463,415	465,658	467,913	470,180	472,460	474,753
Total	7,501,292	7,541,866	7,582,749	7,623,944	7,665,454	7,707,285	7,749,438	7,791,917	7,834,728	7,877,872

Customer Type	Demand 2021(AF)	Demand 2022(AF)	Demand 2023(AF)	Demand 2024(AF)	Demand 2025(AF)	Demand 2026(AF)	Demand 2027(AF)	Demand 2028(AF)	Demand 2029(AF)	Demand 2030(AF)
Residential	13,486	13,546	13,606	13,667	13,727	13,789	13,850	13,912	13,973	14,036
Multi-Residential	354	360	367	374	380	387	394	402	409	416
Commercial	1,609	1,621	1,632	1,644	1,656	1,668	1,680	1,692	1,704	1,716
Industrial	6	6	6	6	6	6	6	6	6	6
Government	582	593	604	616	627	639	651	663	676	689
Other	140	139	138	137	136	135	134	133	133	132
Unaccounted	1,044	1,049	1,054	1,059	1,064	1,069	1,074	1,079	1,085	1,090
Total	17,221	17,314	17,408	17,502	17,597	17,694	17,790	17,888	17,986	18,085

California Water Service Company - Bear Gulch District
Water Supply and Demand Analysis and Projections

2030's Projections

Scenario #3: Based on Maintaining Growth at the

- 10-Year
- 5-Year

Average Annual Growth and

- Low
- Average
- High

Demand per Service for each Customer Class.

Customer Type	Projected Services 2031	Projected Services 2032	Projected Services 2033	Projected Services 2034	Projected Services 2035	Projected Services 2036	Projected Services 2037	Projected Services 2038	Projected Services 2039	Projected Services 2040
Residential	18,192	18,273	18,354	18,436	18,518	18,600	18,683	18,766	18,850	18,934
Multi-Residential	113	115	117	119	121	124	126	128	130	133
Commercial	1,604	1,616	1,627	1,639	1,651	1,663	1,675	1,687	1,699	1,711
Industrial	1	1	1	1	1	1	1	1	1	1
Government	175	178	182	185	189	192	196	200	203	207
Other	23	23	23	23	23	23	22	22	22	22
Total	20,109	20,206	20,305	20,403	20,503	20,603	20,703	20,804	20,906	21,008

Customer Type	Demand 2031(ccf)	Demand 2032(ccf)	Demand 2033(ccf)	Demand 2034(ccf)	Demand 2035(ccf)	Demand 2036(ccf)	Demand 2037(ccf)	Demand 2038(ccf)	Demand 2039(ccf)	Demand 2040(ccf)
Residential	6,141,129	6,168,457	6,195,907	6,223,479	6,251,173	6,278,991	6,306,932	6,334,998	6,363,189	6,391,505
Multi-Residential	184,633	187,990	191,407	194,887	198,430	202,038	205,711	209,451	213,258	217,135
Commercial	753,057	758,479	763,940	769,441	774,981	780,561	786,181	791,841	797,542	803,285
Industrial	2,796	2,796	2,796	2,796	2,796	2,796	2,796	2,796	2,796	2,796
Government	305,687	311,462	317,345	323,340	329,448	335,671	342,012	348,472	355,055	361,762
Other	56,994	56,619	56,247	55,878	55,511	55,146	54,784	54,424	54,066	53,711
Unaccounted	477,058	479,376	481,707	484,051	486,408	488,779	491,162	493,560	495,970	498,394
Total	7,921,355	7,965,180	8,009,350	8,053,872	8,098,747	8,143,981	8,189,578	8,235,542	8,281,877	8,328,589

Customer Type	Demand 2031(AF)	Demand 2032(AF)	Demand 2033(AF)	Demand 2034(AF)	Demand 2035(AF)	Demand 2036(AF)	Demand 2037(AF)	Demand 2038(AF)	Demand 2039(AF)	Demand 2040(AF)
Residential	14,098	14,161	14,224	14,287	14,351	14,415	14,479	14,543	14,608	14,673
Multi-Residential	424	432	439	447	456	464	472	481	490	498
Commercial	1,729	1,741	1,754	1,766	1,779	1,792	1,805	1,818	1,831	1,844
Industrial	6	6	6	6	6	6	6	6	6	6
Government	702	715	729	742	756	771	785	800	815	830
Other	131	130	129	128	127	127	126	125	124	123
Unaccounted	1,095	1,100	1,106	1,111	1,117	1,122	1,128	1,133	1,139	1,144
Total	18,185	18,286	18,387	18,489	18,592	18,696	18,801	18,906	19,013	19,120

California Water Service Company - Bear Gulch District

Water Supply and Demand Analysis and Projections

Worksheet 13

Scenario #4: Based on Maintaining Growth at the 10-Year Average Annual Growth
 5-Year

Summary of Historical Growth Rate from Worksheet 2			
Customer Type	5 Yr. Avg. Historical Growth Rate	Individual Growth Rate Selected	Notes
Single Family Residential	0.730%	0.730%	Historical growth rate used
Multi Family Residential	3.636%	3.636%	Historical growth rate used
Commercial	1.426%	1.426%	Historical growth rate used
Industrial	0.000%	0.000%	Historical growth rate used
Government	3.772%	0.796%	Overall growth rate used
Other	-3.540%	0.796%	Overall growth rate used
Overall	0.796%	0.808%	

California Water Service Company - Bear Gulch District

Water Supply and Demand Analysis and Projections

Worksheet 13

30-year projection Summary

Scenario #4: Based on Maintaining Growth at the 10-Year Average Annual Growth
 5-Year

Customer Type	Projected Services 2010	Projected Services 2015	Projected Services 2020	Projected Services 2025	Projected Services 2030	Projected Services 2035	Projected Services 2040	Services projected to be added from 2010 - 2040
Single Family Residential	16,619	17,235	17,873	18,535	19,222	19,934	20,672	4,053
Multi Family Residential	79	94	113	135	161	192	230	151
Commercial	1,390	1,491	1,601	1,718	1,844	1,980	2,125	735
Industrial	1	1	1	1	1	1	1	0
Government	117	122	127	132	137	143	148	31
Other	27	28	29	31	32	33	35	7
Total	18,233	18,972	19,744	20,552	21,397	22,282	23,211	4,978

California Water Service Company - Bear Gulch District

Water Supply and Demand Analysis and Projections

Worksheet 13

2000's Projections

Scenario #4: Based on Maintaining Growth at the 10-Year Average Annual Growth
 5-Year

Customer Type	Actual Services 2001	Actual Services 2002	Actual Services 2003	Actual Services 2004	Actual Services 2005	Actual Services 2006	Actual Services 2007	Actual Services 2008	Actual Services 2009	Projected Services 2010
Resident	15,875	15,919	15,890	15,911	16,134	16,255	16,260	16,252	16,499	16,619
Multires	64	64	64	64	64	63	63	71	76	79
Commer.	1,281	1,280	1,278	1,277	1,284	1,283	1,289	1,333	1,370	1,390
Indust.	1	1	1	1	1	1	1	1	1	1
Govern.	95	95	96	97	95	96	96	107	116	117
Other	39	41	31	35	30	27	36	32	27	27
Total	17,355	17,400	17,360	17,385	17,608	17,725	17,745	17,797	18,089	18,233

2010's Projections

Customer Type	Projected Services 2011	Projected Services 2012	Projected Services 2013	Projected Services 2014	Projected Services 2015	Projected Services 2016	Projected Services 2017	Projected Services 2018	Projected Services 2019	Projected Services 2020
Resident	16,741	16,863	16,986	17,110	17,235	17,361	17,488	17,615	17,744	17,873
Multires	82	85	88	91	94	98	101	105	109	113
Commer.	1,409	1,429	1,450	1,471	1,491	1,513	1,534	1,556	1,578	1,601
Indust.	1	1	1	1	1	1	1	1	1	1
Govern.	118	119	120	121	122	123	124	125	126	127
Other	27	28	28	28	28	29	29	29	29	29
Total	18,378	18,524	18,672	18,821	18,972	19,123	19,276	19,431	19,587	19,744

California Water Service Company - Bear Gulch District

Water Supply and Demand Analysis and Projections

Worksheet 13

2020's Projections

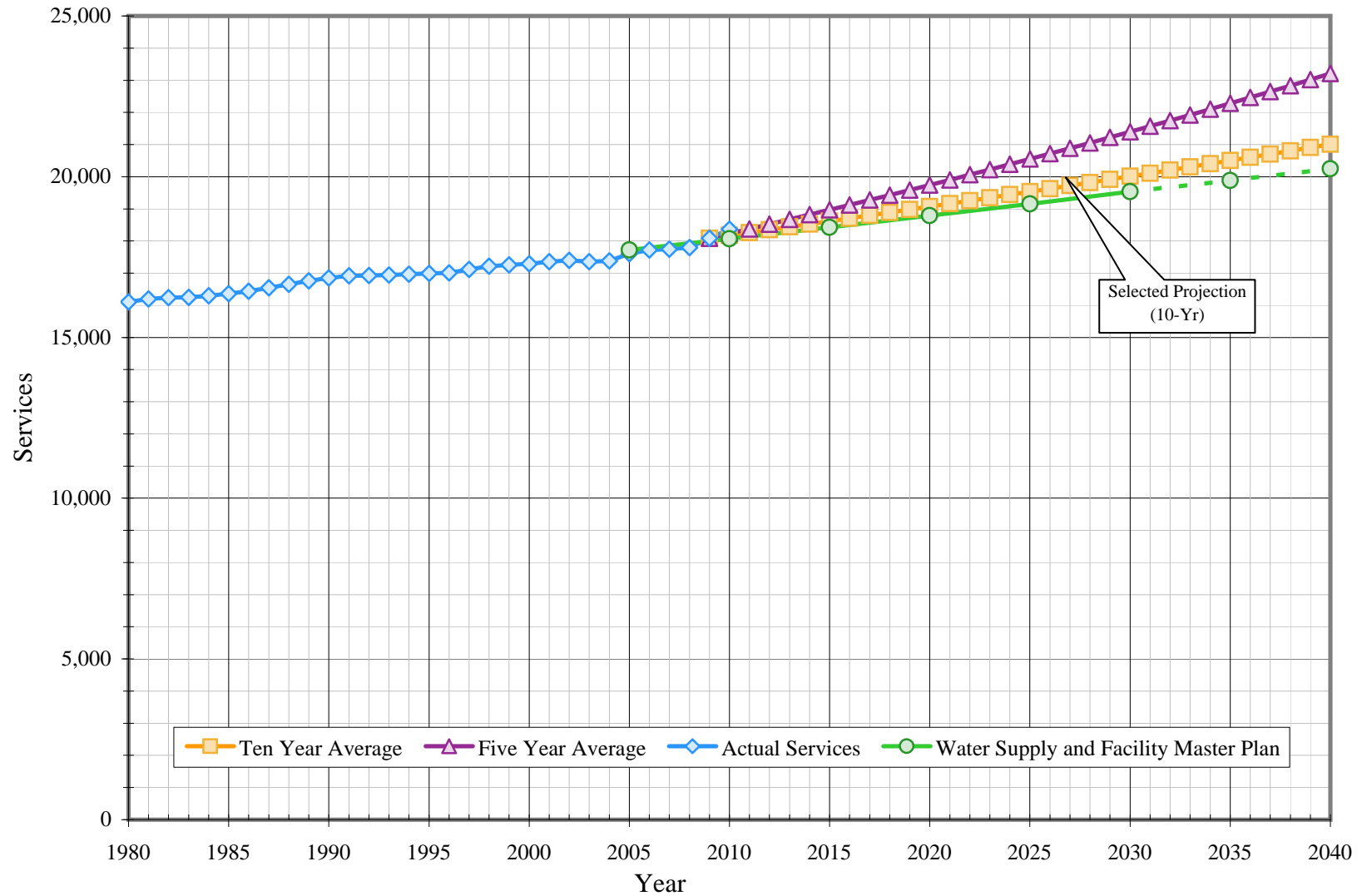
Scenario #4: Based on Maintaining Growth at the 10-Year Average Annual Growth
 5-Year

Customer Type	Projected Services 2021	Projected Services 2022	Projected Services 2023	Projected Services 2024	Projected Services 2025	Projected Services 2026	Projected Services 2027	Projected Services 2028	Projected Services 2029	Projected Services 2030
Resident	18,004	18,135	18,268	18,401	18,535	18,671	18,807	18,944	19,082	19,222
Multires	117	121	125	130	135	139	145	150	155	161
Commer.	1,624	1,647	1,670	1,694	1,718	1,743	1,768	1,793	1,818	1,844
Indust.	1	1	1	1	1	1	1	1	1	1
Govern.	128	129	130	131	132	133	134	135	136	137
Other	30	30	30	30	31	31	31	31	32	32
Total	19,902	20,063	20,224	20,387	20,552	20,718	20,885	21,054	21,225	21,397

2030's Projections

Customer Type	Projected Services 2031	Projected Services 2032	Projected Services 2033	Projected Services 2034	Projected Services 2035	Projected Services 2036	Projected Services 2037	Projected Services 2038	Projected Services 2039	Projected Services 2040
Resident	19,362	19,503	19,646	19,789	19,934	20,079	20,226	20,373	20,522	20,672
Multires	167	173	179	186	192	199	207	214	222	230
Commer.	1,871	1,897	1,924	1,952	1,980	2,008	2,037	2,066	2,095	2,125
Indust.	1	1	1	1	1	1	1	1	1	1
Govern.	138	139	140	141	143	144	145	146	147	148
Other	32	32	33	33	33	33	34	34	34	35
Total	21,571	21,746	21,923	22,102	22,282	22,465	22,648	22,834	23,022	23,211

Bear Gulch District Historical & Projected Services



California Water Service Company - Bear Gulch District
Water Supply and Demand Analysis and Projections

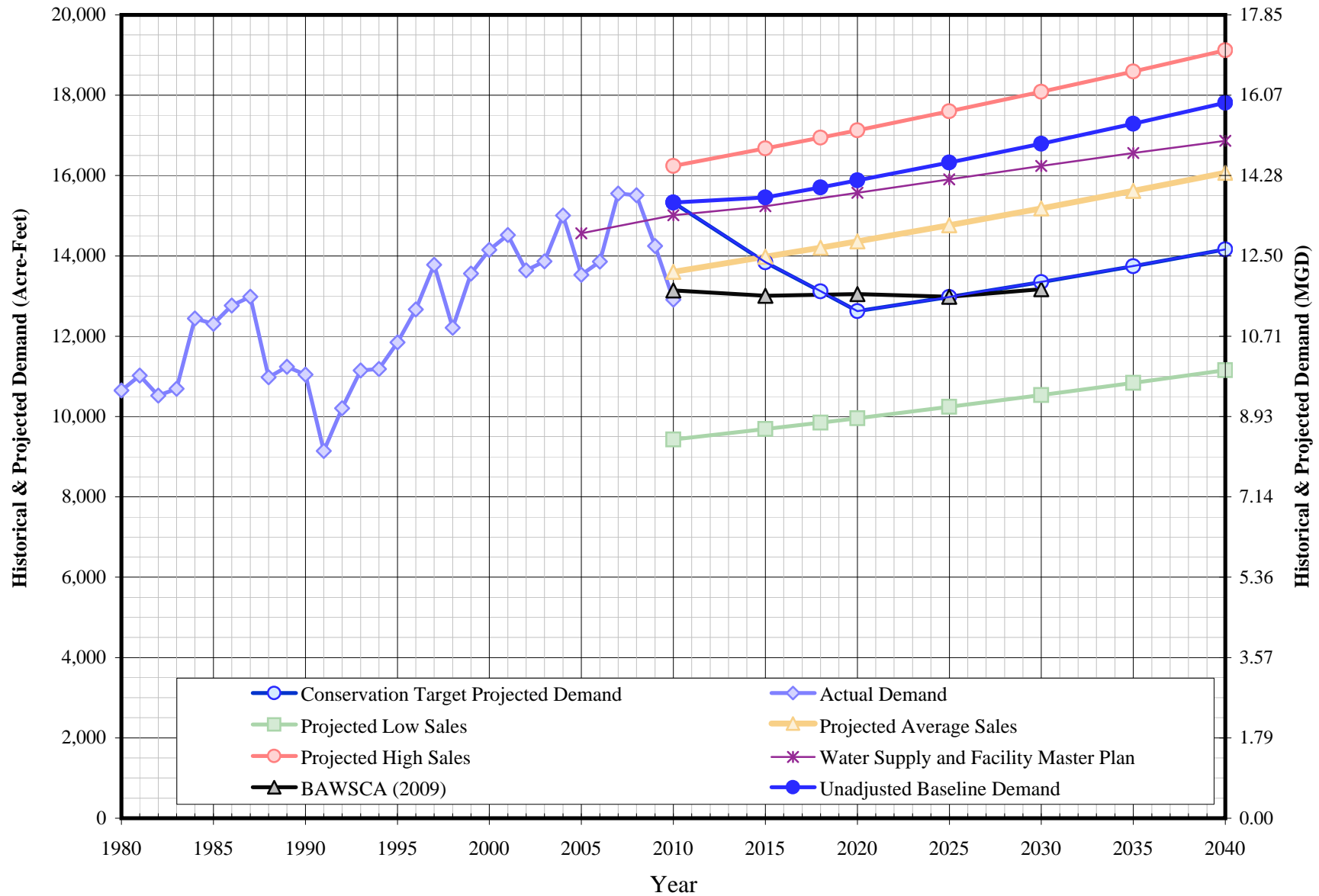
Projected Annual Average Services

* = 2005 Projected Residential Services increased to reflect acquisition of Los Trancos CWD and 2009 increase is due to Skyline CWD acquisition

Year	Actual Services	Projected Growth at Adjusted Ten Year Average	Projected Growth at Adjusted Five Year Average	Year	Actual Services	Projected Growth at Adjusted Ten Year Average	Projected Growth at Adjusted Five Year Average
1980	16,104						
1981	16,195			2011		18,263	18,378
1982	16,235			2012		18,350	18,524
1983	16,248			2013		18,439	18,672
1984	16,296			2014		18,527	18,821
1985	16,364			2015		18,616	18,972
1986	16,438			2016		18,706	19,123
1987	16,547			2017		18,796	19,276
1988	16,657			2018		18,886	19,431
1989	16,759			2019		18,977	19,587
1990	16,849			2020		19,069	19,744
1991	16,916			2021		19,161	19,902
1992	16,930			2022		19,253	20,063
1993	16,942			2023		19,346	20,224
1994	16,968			2024		19,440	20,387
1995	16,993			2025		19,534	20,552
1996	17,008			2026		19,628	20,718
1997	17,114			2027		19,723	20,885
1998	17,212			2028		19,819	21,054
1999	17,256			2029		19,915	21,225
2000	17,289			2030		20,011	21,397
2001	17,355			2031		20,109	21,571
2002	17,400			2032		20,206	21,746
2003	17,360			2033		20,305	21,923
2004	17,385			2034		20,403	22,102
2005	17,608			2035		20,503	22,282
2006	17,725			2036		20,603	22,465
2007	17,745			2037		20,703	22,648
2008	17,797			2038		20,804	22,834
2009	18,089	18,089	18,089	2039		20,906	23,022
2010	18,369	18,176	18,233	2040		21,008	23,211

Bear Gulch

Historical & Projected Demand

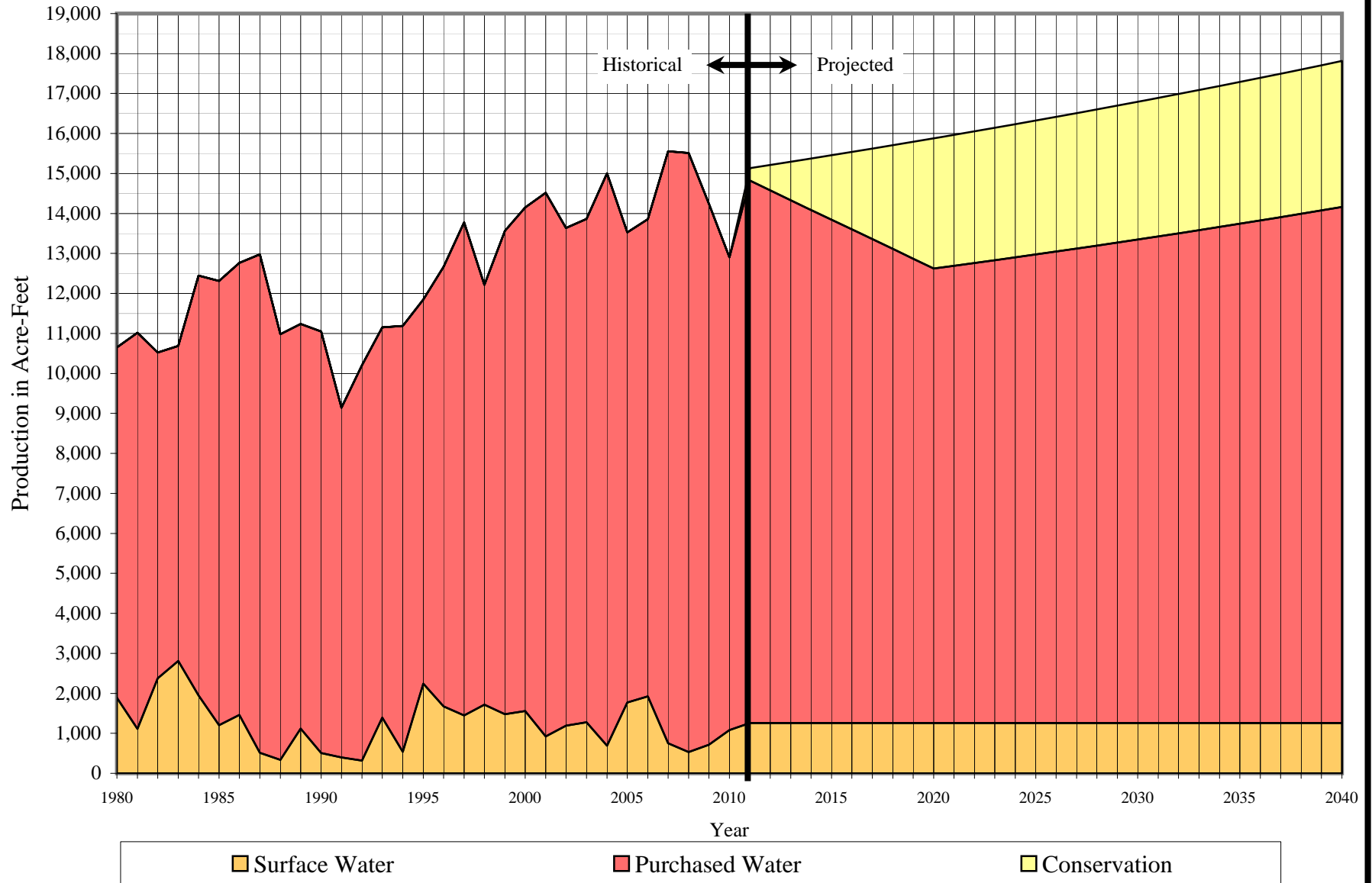


California Water Service Company - Bear Gulch District
Water Supply and Demand Analysis and Projections

Projected Demand:		Acre-Feet per Year					MGD					
Year	Actual Demand	Projection			Unadjusted Baseline Demand	Target Demand	Actual Demand	Projection			Unadjusted Baseline Demand	Target Demand
		Low	Average	High				Low	Average	High		
1980	10,653						9.51					
1981	11,019						9.84					
1982	10,522						9.39					
1983	10,690						9.54					
1984	12,444						11.11					
1985	12,311						10.99					
1986	12,762						11.39					
1987	12,981						11.59					
1988	10,979						9.80					
1989	11,241						10.03					
1990	11,048						9.86					
1991	9,141						8.16					
1992	10,207						9.11					
1993	11,151						9.95					
1994	11,187						9.99					
1995	11,849						10.58					
1996	12,666						11.31					
1997	13,780						12.30					
1998	12,212						10.90					
1999	13,563						12.11					
2000	14,149						12.63					
2001	14,518						12.96					
2002	13,639						12.18					
2003	13,861						12.37					
2004	15,008						13.40					
2005	13,527						12.08					
2006	13,858						12.37					
2007	15,554						13.89					
2008	15,510						13.85					
2009	14,245						12.72					
2010	12,907	9,429	13,604	16,241	15,329	15,329	11.52	8.42	12.15	14.50	13.69	13.69
2015		9,690	13,977	16,676	15,458	13,839		8.65	12.48	14.89	13.80	12.35
2018		9,851	14,207	16,945	15,707	13,117		8.79	12.68	15.13	14.02	11.71
2020		9,960	14,364	17,128	15,878	12,622		8.89	12.82	15.29	14.18	11.27
2025		10,241	14,765	17,597	16,323	12,975		9.14	13.18	15.71	14.57	11.58
2030		10,533	15,183	18,085	16,792	13,348		9.40	13.55	16.15	14.99	11.92
2035		10,837	15,618	18,592	17,289	13,743		9.67	13.94	16.60	15.43	12.27
2040		11,153	16,070	19,120	17,814	14,160		9.96	14.35	17.07	15.90	12.64

Bear Gulch District

Historical and Projected Distribution of Demand by Source



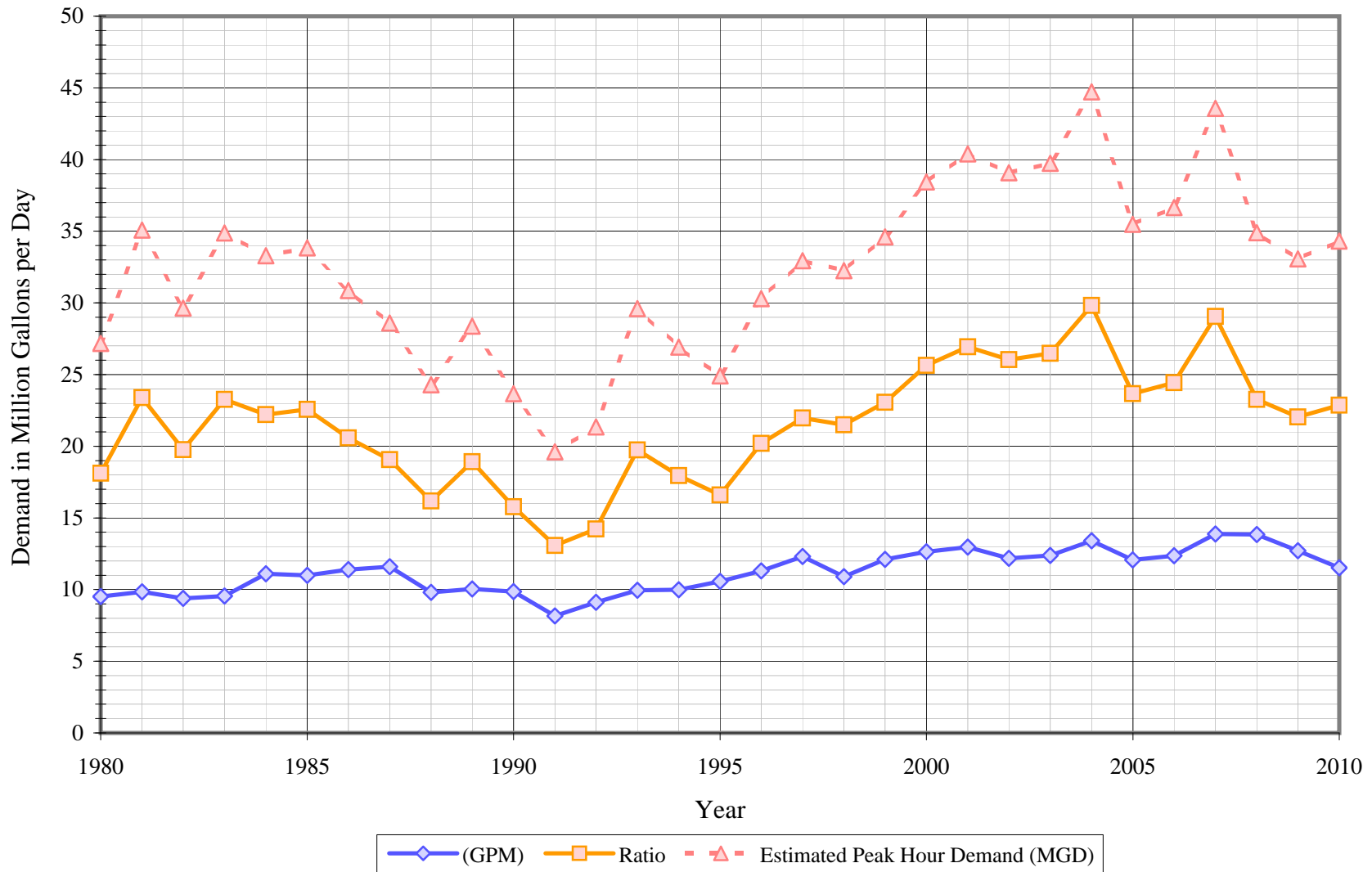
California Water Service Company - Bear Gulch District
Water Supply and Demand Analysis and Projections
Historical and Projected Distribution of Demand by Source

Worksheet 17

Year	Purchased Water		Surface Water		Conservation		Total		Year	Purchased Water		Surface Water		Conservation		Total	
	kGal	AFY	kGal	AFY	kGal	AFY	kGal	AFY		kGal	AFY	kGal	AFY	kGal	AFY	kGal	AFY
1980	2,856,916	8,768	614,293	1,885			3,471,209	10,653									
1981	3,228,194	9,907	362,388	1,112			3,590,582	11,019	2011	4,418,402	13,560	410,571	1,260	103,275	317	4,932,247	15,137
1982	2,653,450	8,143	775,110	2,379			3,428,560	10,522	2012	4,339,782	13,318	410,571	1,260	207,627	637	4,957,980	15,216
1983	2,567,204	7,878	916,133	2,812			3,483,337	10,690	2013	4,260,341	13,075	410,571	1,260	313,074	961	4,983,986	15,295
1984	3,420,417	10,497	634,479	1,947			4,054,896	12,444	2014	4,180,065	12,828	410,571	1,260	419,633	1,288	5,010,270	15,376
1985	3,620,164	11,110	391,381	1,201			4,011,545	12,311	2015	4,098,940	12,579	410,571	1,260	527,323	1,618	5,036,834	15,458
1986	3,682,867	11,302	475,621	1,460			4,158,488	12,762	2016	4,021,291	12,341	410,571	1,260	631,821	1,939	5,063,683	15,540
1987	4,062,128	12,466	167,637	515			4,229,765	12,981	2017	3,942,811	12,100	410,571	1,260	737,439	2,263	5,090,821	15,623
1988	3,467,762	10,642	109,871	337			3,577,633	10,979	2018	3,863,485	11,857	410,571	1,260	844,195	2,591	5,118,251	15,707
1989	3,298,540	10,123	364,207	1,118			3,662,747	11,241	2019	3,783,300	11,611	410,571	1,260	952,108	2,922	5,145,979	15,792
1990	3,435,750	10,544	164,238	504			3,599,988	11,048	2020	3,702,240	11,362	410,571	1,260	1,061,197	3,257	5,174,008	15,878
1991	2,848,638	8,742	129,832	398			2,978,470	9,141	2021	3,724,763	11,431	410,571	1,260	1,067,008	3,275	5,202,342	15,965
1992	3,222,210	9,889	103,808	319			3,326,018	10,207	2022	3,747,532	11,501	410,571	1,260	1,072,883	3,293	5,230,986	16,053
1993	3,180,554	9,761	452,925	1,390			3,633,479	11,151	2023	3,770,551	11,571	410,571	1,260	1,078,822	3,311	5,259,944	16,142
1994	3,470,686	10,651	174,732	536			3,645,418	11,187	2024	3,793,822	11,643	410,571	1,260	1,084,827	3,329	5,289,220	16,232
1995	3,129,805	9,605	731,052	2,244			3,860,857	11,849	2025	3,817,350	11,715	410,571	1,260	1,090,898	3,348	5,318,819	16,323
1996	3,582,775	10,995	544,302	1,670			4,127,077	12,666	2026	3,841,138	11,788	410,571	1,260	1,097,036	3,367	5,348,745	16,415
1997	4,018,784	12,333	471,482	1,447			4,490,266	13,780	2027	3,865,190	11,862	410,571	1,260	1,103,242	3,386	5,379,003	16,508
1998	3,420,218	10,496	559,225	1,716			3,979,443	12,212	2028	3,889,510	11,937	410,571	1,260	1,109,517	3,405	5,409,597	16,601
1999	3,938,688	12,087	480,727	1,475			4,419,415	13,563	2029	3,914,100	12,012	410,571	1,260	1,115,861	3,424	5,440,533	16,696
2000	4,103,289	12,593	507,224	1,557			4,610,513	14,149	2030	3,938,966	12,088	410,571	1,260	1,122,277	3,444	5,471,814	16,792
2001	4,431,042	13,598	299,811	920			4,730,853	14,518	2031	3,964,110	12,165	410,571	1,260	1,128,765	3,464	5,503,446	16,890
2002	4,056,141	12,448	388,197	1,191			4,444,338	13,639	2032	3,989,536	12,243	410,571	1,260	1,135,326	3,484	5,535,433	16,988
2003	4,100,135	12,583	416,536	1,278			4,516,671	13,861	2033	4,015,250	12,322	410,571	1,260	1,141,960	3,505	5,567,781	17,087
2004	4,664,812	14,316	225,547	692			4,890,359	15,008	2034	4,041,253	12,402	410,571	1,260	1,148,670	3,525	5,600,494	17,187
2005	3,829,912	11,754	577,950	1,774			4,407,862	13,527	2035	4,067,551	12,483	410,571	1,260	1,155,455	3,546	5,633,577	17,289
2006	3,889,276	11,936	626,464	1,923			4,515,740	13,858	2036	4,094,147	12,565	410,571	1,260	1,162,318	3,567	5,667,036	17,392
2007	4,822,709	14,800	245,580	754			5,068,289	15,554	2037	4,121,046	12,647	410,571	1,260	1,169,258	3,588	5,700,875	17,495
2008	4,881,890	14,982	172,212	529			5,054,102	15,510	2038	4,148,252	12,731	410,571	1,260	1,176,278	3,610	5,735,101	17,600
2009	4,408,292	13,529	233,305	716			4,641,597	14,245	2039	4,175,769	12,815	410,571	1,260	1,183,378	3,632	5,769,717	17,707
2010	3,852,776	11,824	353,101	1,084			4,205,877	12,907	2040	4,203,600	12,900	410,571	1,260	1,190,559	3,654	5,804,730	17,814

Bear Gulch District

Average Day, Maximum Day, Peak Demand

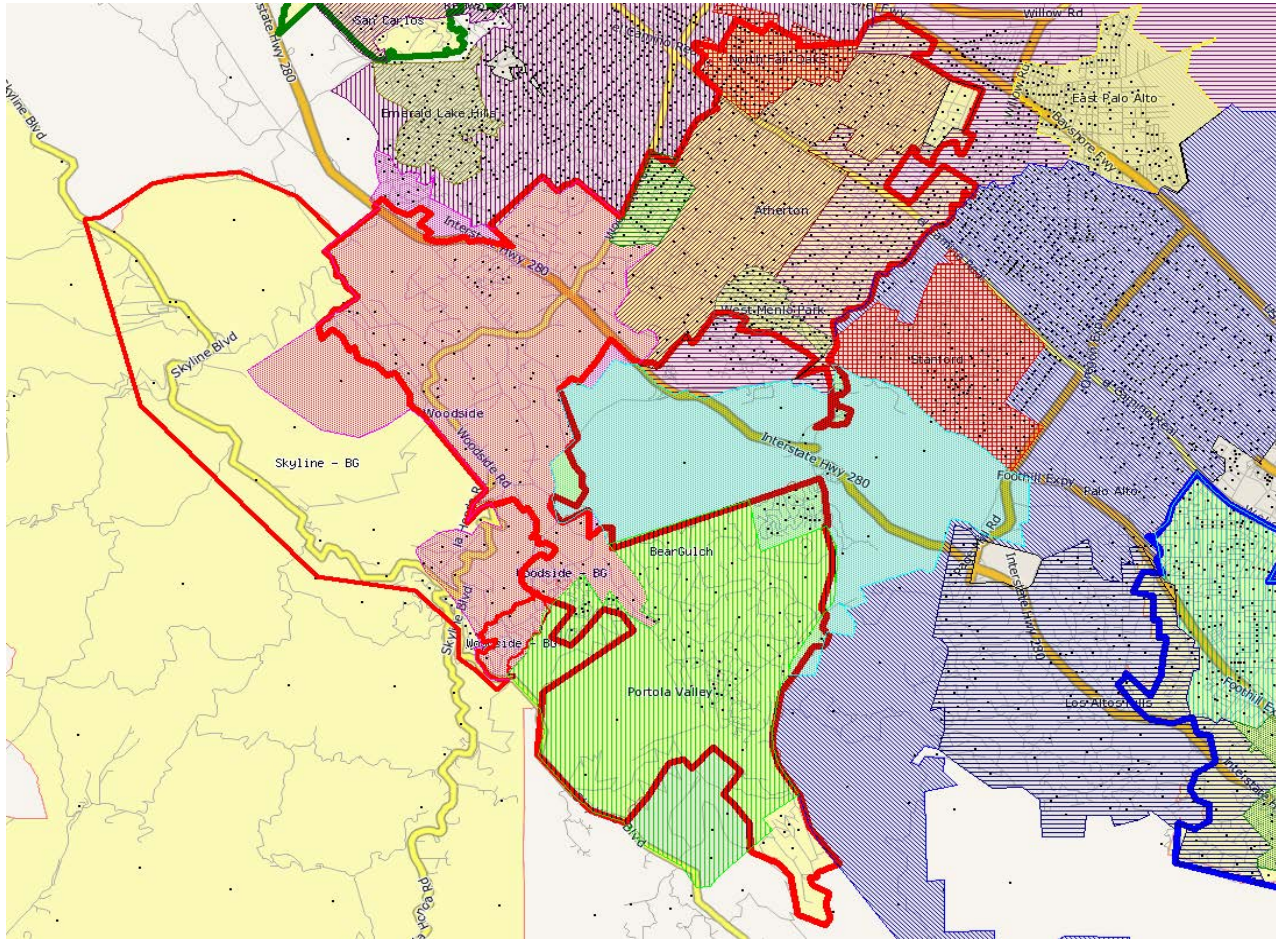


California Water Service Company - Bear Gulch District
Water Supply and Demand Analysis and Projections
Historical and Projected Average Day, Maximum Day, and Peak Demand

Worksheet 18

Year	Historical Annual Demand		Average Day Demand		Maximum Day Demand		MDD ADD Ratio	Estimated Peak Hour Demand		PHD MDD Ratio	PHD ADD Ratio	Measured Peak Hour Demand		PHD MDD Ratio
	(AFY)	(MGY)	(MGD)	(GPD)	(MGD)	(GPD)		(MGD)	(GPM)			(MGD)	(GPM)	
1980	10,653	3,471	9.51	591	18.11	1,125	1.90	27.17	18,869	1.50	2.86			
1981	11,019	3,591	9.84	607	23.39	1,444	2.38	35.08	24,364	1.50	3.57			
1982	10,522	3,429	9.39	579	19.76	1,217	2.10	29.65	20,588	1.50	3.16			
1983	10,690	3,483	9.54	587	23.26	1,431	2.44	34.89	24,227	1.50	3.66			
1984	12,444	4,055	11.11	682	22.20	1,362	2.00	33.30	23,123	1.50	3.00			
1985	12,311	4,012	10.99	672	22.57	1,379	2.05	33.85	23,505	1.50	3.08			
1986	12,762	4,158	11.39	693	20.58	1,252	1.81	30.87	21,438	1.50	2.71			
1987	12,981	4,230	11.59	700	19.06	1,152	1.64	28.59	19,856	1.50	2.47			
1988	10,979	3,578	9.80	588	16.19	972	1.65	24.28	16,863	1.50	2.48			
1989	11,241	3,663	10.03	599	18.92	1,129	1.89	28.38	19,706	1.50	2.83			
1990	11,048	3,600	9.86	585	15.77	936	1.60	23.66	16,429	1.50	2.40			
1991	9,141	2,978	8.16	482	13.08	773	1.60	19.62	13,625	1.50	2.40			
1992	10,207	3,326	9.11	538	14.23	841	1.56	21.35	14,823	1.50	2.34			
1993	11,151	3,633	9.95	588	19.74	1,165	1.98	29.61	20,563	1.50	2.97			
1994	11,187	3,645	9.99	589	17.95	1,058	1.80	26.93	18,698	1.50	2.70			
1995	11,849	3,861	10.58	622	16.60	977	1.57	24.90	17,292	1.50	2.35			
1996	12,666	4,127	11.31	665	20.20	1,188	1.79	30.30	21,042	1.50	2.68			
1997	13,780	4,490	12.30	719	21.96	1,283	1.79	32.94	22,876	1.50	2.68			
1998	12,212	3,979	10.90	633	21.50	1,249	1.97	32.25	22,397	1.50	2.96			
1999	13,563	4,419	12.11	702	23.07	1,337	1.91	34.60	24,028	1.50	2.86			
2000	14,149	4,610	12.63	731	25.63	1,483	2.03	38.45	26,699	1.50	3.04			
2001	14,518	4,731	12.96	747	26.93	1,552	2.08	40.40	28,055	1.50	3.12			
2002	13,639	4,444	12.18	700	26.05	1,497	2.14	39.07	27,132	1.50	3.21			
2003	13,861	4,517	12.37	713	26.49	1,526	2.14	39.73	27,592	1.50	3.21			
2004	15,008	4,890	13.40	771	29.82	1,715	2.23	44.73	31,063	1.50	3.34			
2005	13,527	4,408	12.08	686	23.66	1,344	1.96	35.49	24,645	1.50	2.94			
2006	13,858	4,516	12.37	698	24.43	1,378	1.97	36.65	25,448	1.50	2.96			
2007	15,554	5,068	13.89	783	29.05	1,637	2.09	43.57	30,258	1.50	3.14			
2008	15,510	5,054	13.85	778	23.26	1,307	1.68	34.89	24,230	1.50	2.52			
2009	14,245	4,642	12.72	703	22.04	1,219	1.73	33.06	22,961	1.50	2.60			
2010	12,907	4,206	11.52	627	22.87	1,245	1.98	34.31	23,823	1.50	2.98			
10 year Average (2001-2010)			12.73	720	25.46	1,442	2.00	38.19	25,344	1.50	2.84			
5 year Average (2006-2010)			12.87	718	24.33	1,357	1.89	36.50	26,521	1.50	3.00			

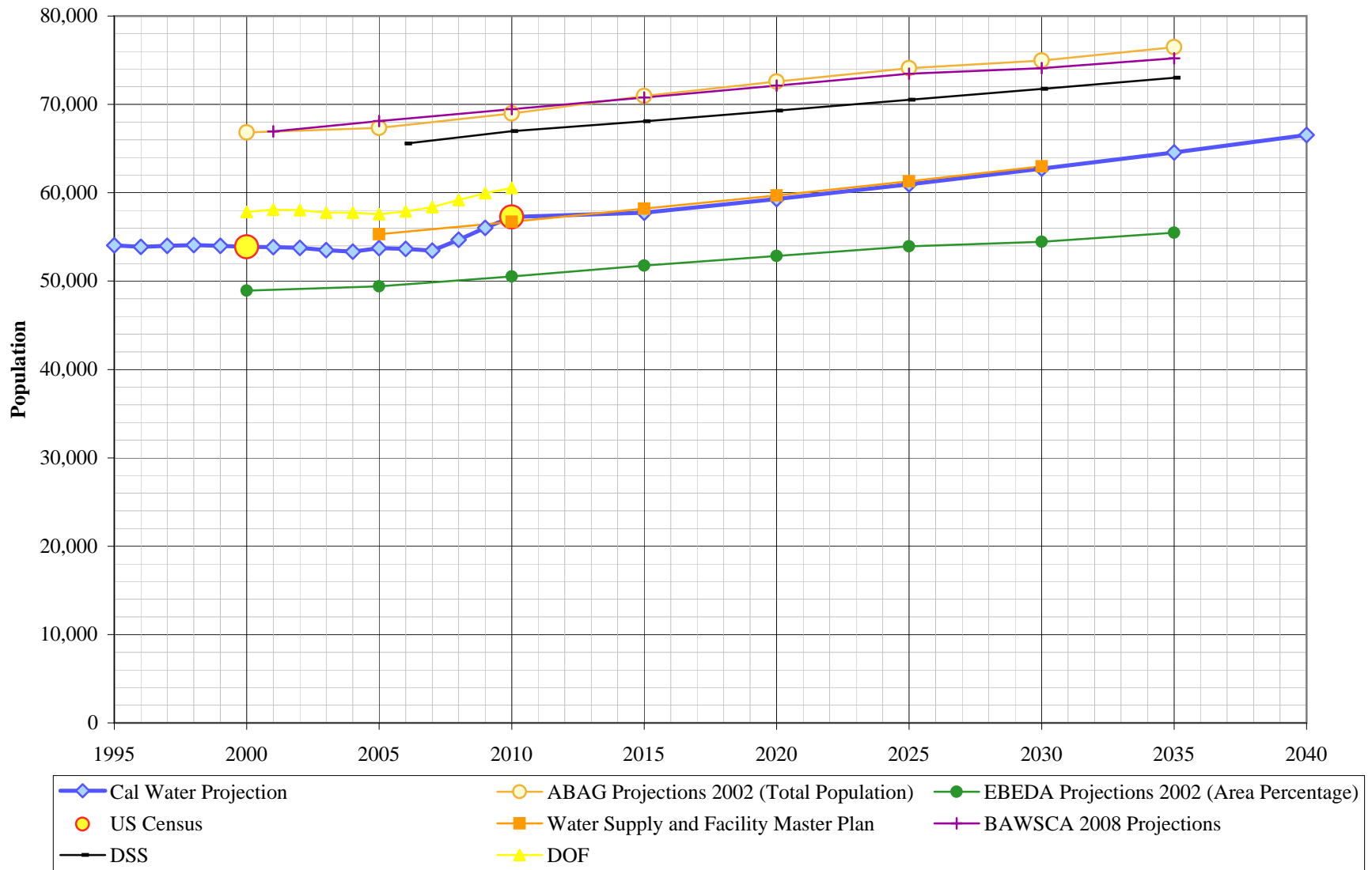
California Water Service Company - Bear Gulch District
Water Supply and Demand Analysis and Projections



Year	US Census		Persons per Housing Unit	Census Blocks
	Population	Housing Units		
2000	53,885	19,956	2.700	1,130
2010	57,177	22,585	2.532	1,216
	106.1%	113.2%	93.8%	107.6%

MARPLOT disclaimer: The population and housing number given above are only rough estimates. They are based on the US Census Blocks. Although Census Blocks are polygons, MARPLOT use the centroid, or center point, rather than the entire polygon. If a Census Block centroid is within any of the MARPLOT selected objects, the population and housing numbers for that block are tallied, even if only part of the block is within the selected object. It is possible for a block not be counted if its centroid is not within selected objects, even though part of the block is within the selected objects.

Bear Gulch District Population Projections



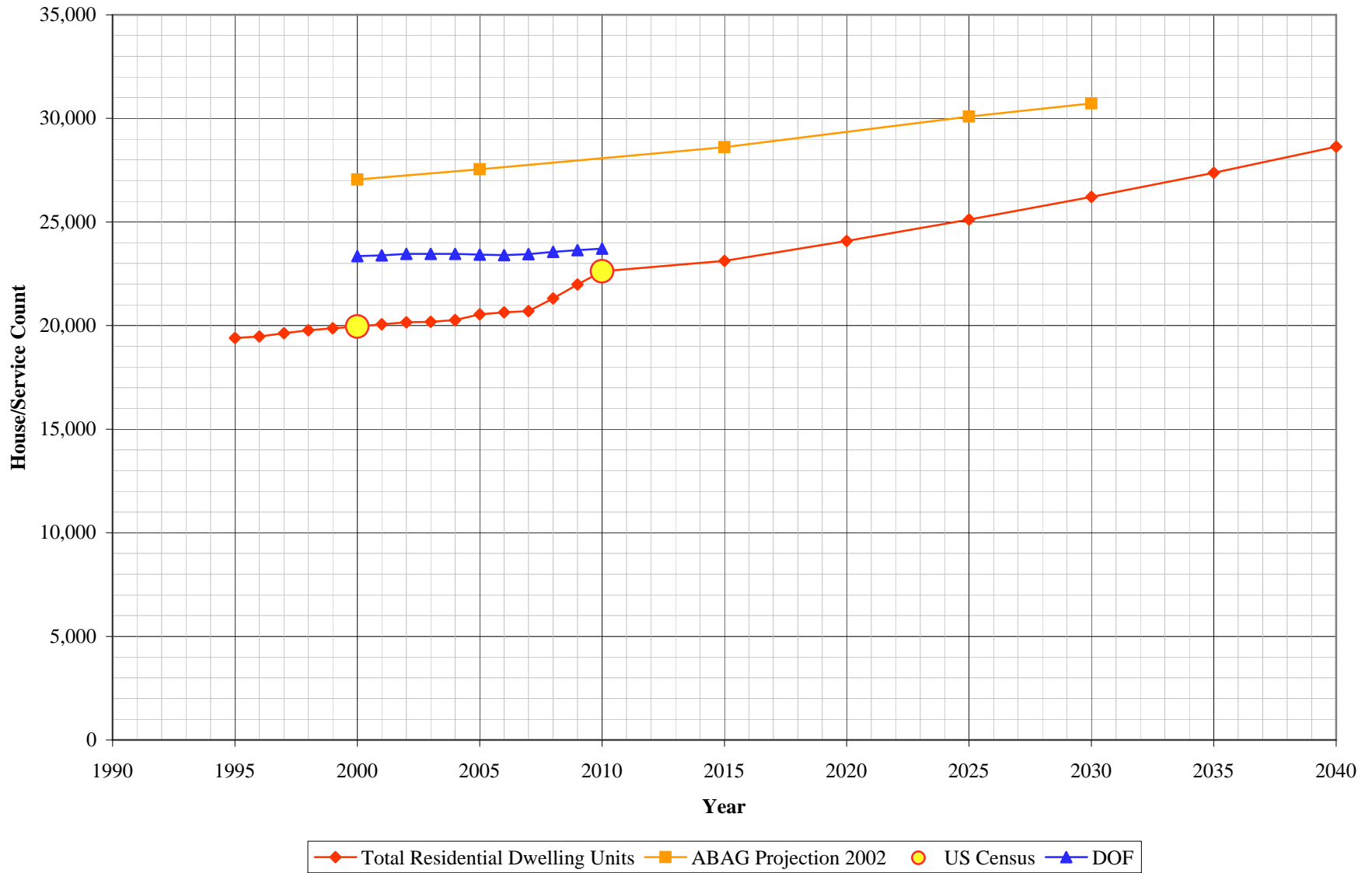
California Water Service Company - Bear Gulch District

Water Supply and Demand Analysis and Projections

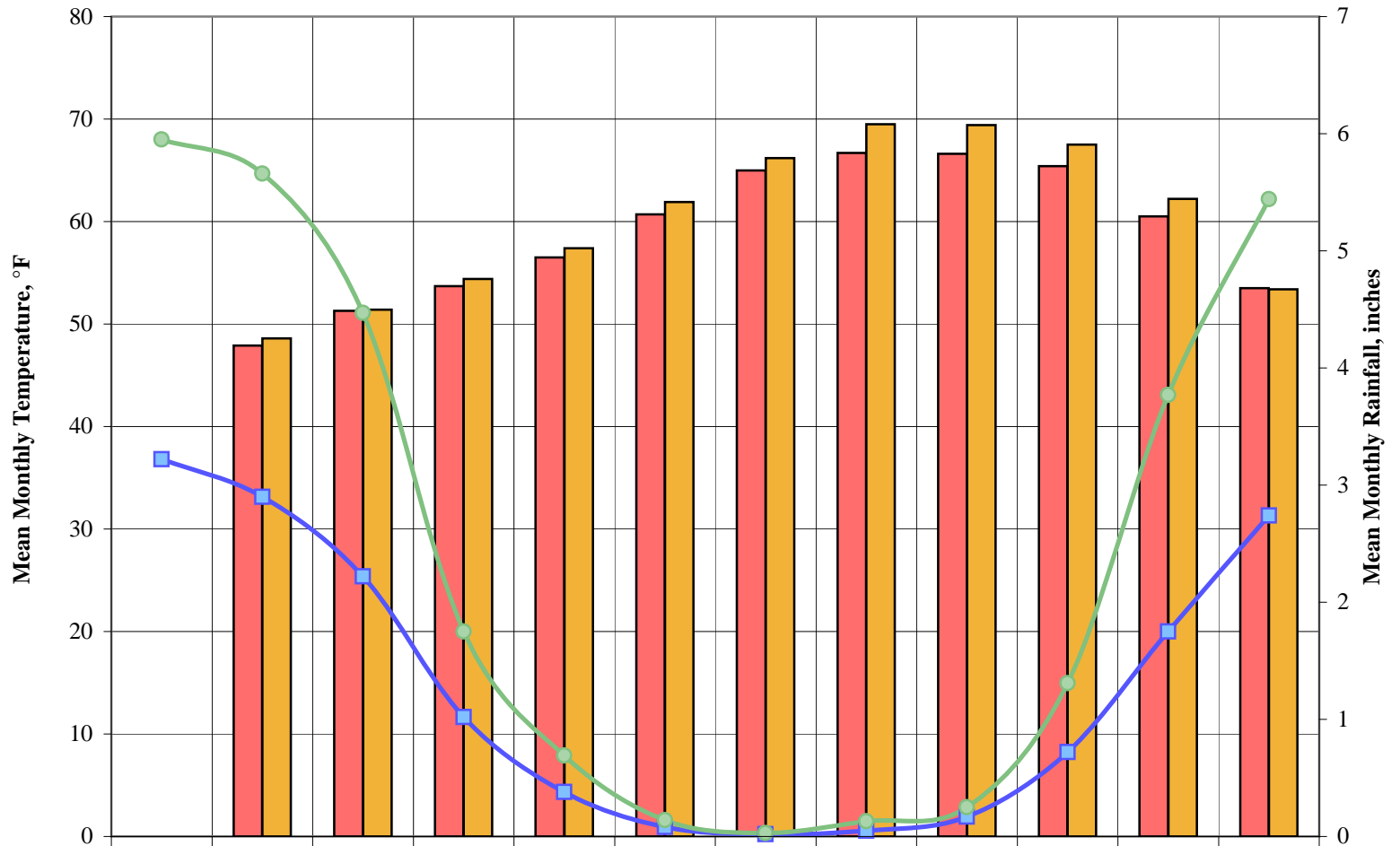
Year	US Census		Persons per Housing Unit	Single Family Residential	Multi Family Residential			Flat Rate Residential
	Population	Housing Units		Services (DU)	Services	Units (DU)	Unit Density	Services (DU)
2000	53,885	19,956	2.700	15,816	64	4,140	64.7	0
2010	57,254	22,620	2.531	16,781	80	5,839	73.0	0
	106.3%	113.3%	93.7%	106.1%	125.0%	141.0%	112.8%	0.0%

Year	Single Family Residential	Multi Family Residential			Flat Rate Residential Services (DU)	Total Residential Dwelling Units	Persons per Housing Unit	Estimated District Population
	Services (DU)	Services	Residential Units (DU)	Unit Density				
1995	15,532	64	3,874	60.5	0	19,406	2.785	54,041
1996	15,543	64	3,928	61.4	0	19,471	2.768	53,891
1997	15,650	64	3,981	62.2	0	19,631	2.751	54,002
1998	15,743	64	4,034	63.0	0	19,777	2.734	54,070
1999	15,785	64	4,087	63.9	0	19,872	2.717	53,994
2000	15,816	64	4,140	64.7	0	19,956	2.700	53,885
2001	15,875	64	4,193	65.5	0	20,068	2.683	53,848
2002	15,919	64	4,246	66.3	0	20,165	2.666	53,768
2003	15,890	64	4,299	67.2	0	20,189	2.649	53,491
2004	15,911	64	4,352	68.0	0	20,263	2.633	53,345
2005	16,134	64	4,406	68.8	0	20,540	2.616	53,725
2006	16,255	63	4,389	69.7	0	20,644	2.599	53,649
2007	16,260	63	4,441	70.5	0	20,701	2.582	53,448
2008	16,252	71	5,064	71.3	0	21,317	2.565	54,675
2009	16,499	76	5,484	72.2	0	21,983	2.548	56,013
2010	16,781	80	5,839	73.0	0	22,620	2.531	57,254
2015	16,944	85	6,180	73.0	0	23,125	2.497	57,733
2020	17,325	93	6,763	73.0	0	24,088	2.462	59,305
2025	17,714	101	7,400	73.0	0	25,114	2.428	60,965
2030	18,111	111	8,098	73.0	0	26,209	2.393	62,719
2035	18,518	121	8,861	73.0	0	27,379	2.358	64,573
2040	18,934	133	9,697	73.0	0	28,630	2.324	66,535

Bear Gulch District Housing Projections



Bear Gulch District Average Monthly Temperature and Rainfall

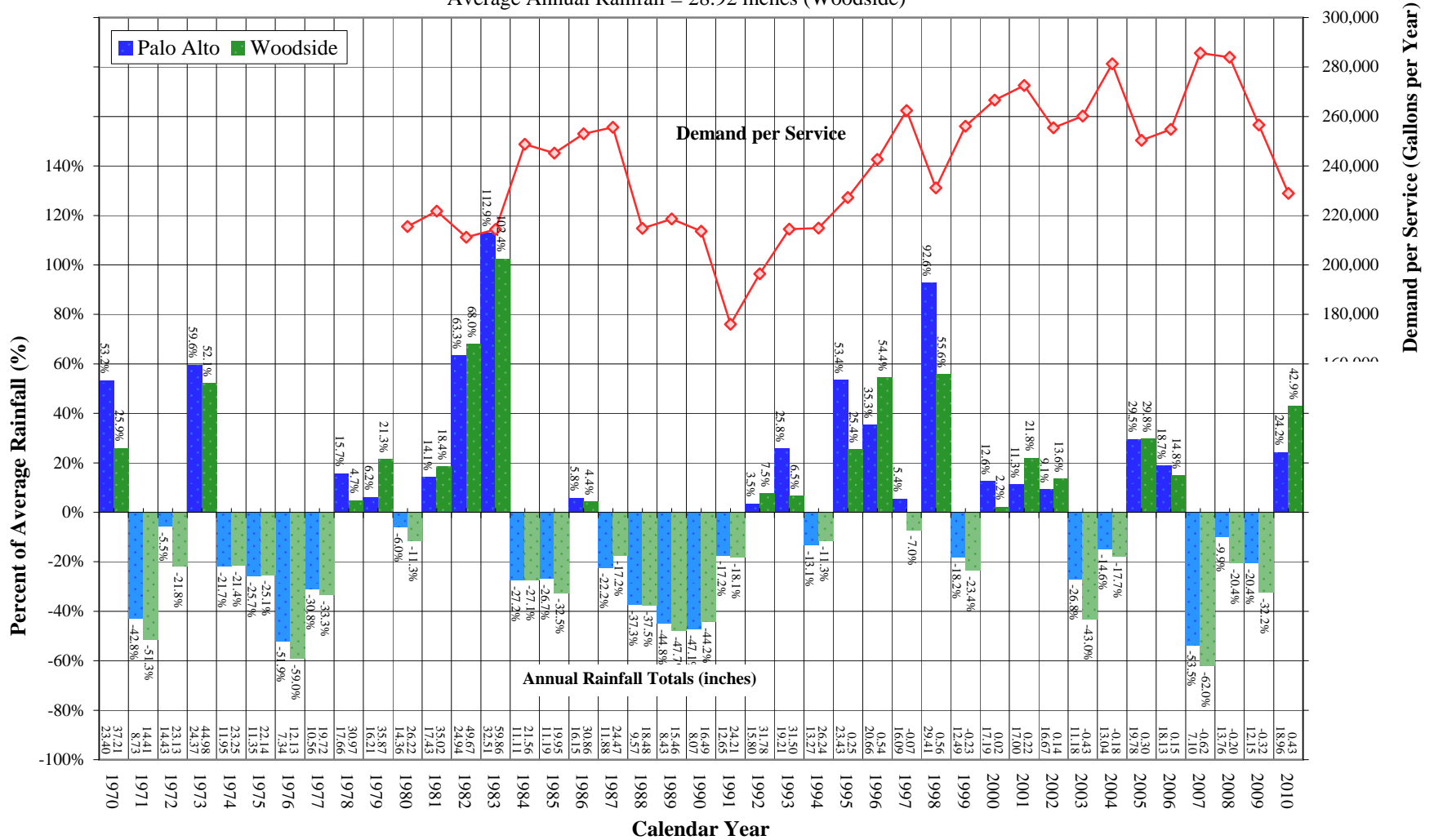


	January	February	March	April	May	June	July	August	September	October	November
■ Palo Alto Avg. Temp	47.9	51.3	53.7	56.5	60.7	65	66.7	66.6	65.4	60.5	53.5
■ Woodside Avg. Temp	48.6	51.4	54.4	57.4	61.9	66.2	69.5	69.4	67.5	62.2	53.4
■ Palo Alto Avg. Rainfall	3.22	2.9	2.22	1.02	0.38	0.08	0.05	0.17	0.72	1.75	2.74
■ Woodside Avg. Rainfall	5.95	5.66	4.47	1.75	0.69	0.14	0.13	0.25	1.31	3.77	5.44

Bear Gulch District

Comparison of Annual Rainfall to Historical Average

Average Annual Rainfall = 15.63 inches (Palo Alto)
 Average Annual Rainfall = 28.92 inches (Woodside)



**California Water Service Company - Bear Gulch
Water Supply and Demand Analysis and Projections**

Worksheet 20

Temperature & Rainfall History - Woodside

Year	Annual Average Temp.	Annual Average Rainfall	Rainfall Percent Variation	Demand per Service (Gal / Yr)	Percent of Average Demand	Year	Annual Average Temp.	Annual Average Rainfall	Rainfall Percent Variation	Demand per Service (Gal / Yr)	Percent of Average Demand
1970	-	37.21	25.9%			1995	60.6	37.09	25.4%	227,203	94.7%
1971	-	14.41	-51.3%			1996	61.2	45.65	54.4%	242,655	101.1%
1972	-	23.13	-21.8%			1997	61.3	27.49	-7.0%	262,374	109.3%
1973	-	44.98	52.1%			1998	57.1	46.01	55.6%	231,202	96.3%
1974	58.0	23.25	-21.4%			1999	59.7	22.64	-23.4%	256,109	106.7%
1975	57.8	22.14	-25.1%			2000	60.2	30.21	2.2%	266,673	111.1%
1976	58.1	12.13	-59.0%			2001	60.4	36.02	21.8%	272,593	113.6%
1977	58.4	19.72	-33.3%			2002	59.6	33.58	13.6%	255,422	106.4%
1978	58.8	30.97	4.7%			2003	60.7	16.86	-43.0%	260,177	108.4%
1979	54.8	35.87	21.3%			2004	59.9	24.32	-17.7%	281,298	117.2%
1980	61.7	26.22	-11.3%	215,549	89.8%	2005	60.2	38.39	29.8%	250,333	104.3%
1981	58.9	35.02	18.4%	221,709	92.4%	2006	61.4	33.96	14.8%	254,767	106.1%
1982	57.3	49.67	68.0%	211,183	88.0%	2007	59.3	11.25	-62.0%	285,618	119.0%
1983	59.3	59.86	102.4%	214,386	89.3%	2008	49.0	23.55	-20.4%	283,994	118.3%
1984	59.2	21.56	-27.1%	248,828	103.7%	2009	55.4	20.05	-32.2%	256,598	106.9%
1985	57.9	19.95	-32.5%	245,145	102.1%	2010	59.5	42.26	42.9%	228,966	95.4%
1986	59.1	30.86	4.4%	252,980	105.4%	2011					
1987	58.1	24.47	-17.2%	255,621	106.5%	2012					
1988	59.2	18.48	-37.5%	214,783	89.5%	2013					
1989	57.9	15.46	-47.7%	218,554	91.0%	2014					
1990	55.6	16.49	-44.2%	213,662	89.0%	2015					
1991	60.6	24.21	-18.1%	176,074	73.4%	2016					
1992	60.2	31.78	7.5%	196,457	81.8%	2017					
1993	59.5	31.50	6.5%	214,466	89.3%	2018					
1994	58.4	26.24	-11.3%	214,841	89.5%	2019					

Source: Western Regional Climate Center:

<http://www.wrcc.dri.edu/cgi-bin/cliMAIN.pl?ca9792>

Calendar Year	Average Water Year	Normal Water Year	Single-Dry Water Year	Multiple-Dry Water Years			
				1	2	3	4
1997	-	1997	2007	1988	1989	1990	1991
Demand per Service (gal/yr)	240,042	262,374	285,618	214,783	218,554	213,662	176,074
Difference from Normal	91.5%	100.0%	108.9%	81.9%	83.3%	81.4%	67.1%

California Water Service Company - Bear Gulch
Water Supply and Demand Analysis and Projections

Temperature Data

Station:(049792) WOODSIDE FIRE STN 1															
From Year=1973 To Year=2010															
	Monthly Averages			Daily Extremes				Monthly Extremes				Max. Temp.		Min. Temp.	
	Max.	Min.	Mean	High	Date	Low	Date	Highest Mean	Year	Lowest Mean	Year	>= 90 F	<= 32 F	<= 32 F	<= 0 F
	F	F	F	F	dd/yyyy or yyyymmdd	F	dd/yyyy or yyyymmdd	F	-	F	-	# Days	# Days	# Days	# Days
January	60.3	36.8	48.6	84	19/2009	20	2/1976	54.3	2003	44.3	1982	0	0	9.9	0
February	63.7	39	51.4	84	26/1986	17	6/1989	54.9	1996	45.9	1989	0	0	4.2	0
March	67.5	41.1	54.4	91	16/2004	28	5/1976	61.4	2004	49.3	2006	0.1	0	1.7	0
April	72.6	42.3	57.4	99	30/1996	30	1/1976	61.6	1992	53.2	1976	1.1	0	0.5	0
May	78.2	45.6	61.9	105	30/2001	29	13/2010	68.7	2001	55.4	1977	3.9	0	0	0
June	83.8	48.6	66.2	108	25/1995	36	3/1976	70.9	1981	61.7	1980	7.4	0	0	0
July	87.9	51.1	69.5	114	22/2006	35	7/1981	75	2006	62.2	1981	11.3	0	0	0
August	87.9	50.8	69.4	110	1/1993	38	22/1987	72.3	1996	65.1	1987	11.6	0	0	0
September	85.5	49.5	67.5	108	19/2000	38	27/1987	71.9	1984	62.8	1986	9.1	0	0	0
October	79.2	45.3	62.2	106	8/1996	30	8/2007	66.4	2003	58.2	1981	3.7	0	0	0
November	66.6	40.2	53.4	90	2/1997	23	27/1987	58.4	1995	49.8	1994	0	0	3.2	0
December	60.2	36.6	48.4	76	1/1988	20	13/2008	52.4	1995	43.5	1978	0	0	10	0
Annual	74.4	43.9	59.2	114	20060722	17	19890206	61.3	1997	57.3	1982	48	0	29.6	0

	Jan	Feb	Mar	Apr	May	Jun	Jul	Aug	Sep	Oct	Nov	Dec	Total
Monthly Average ETo Report	1.86	2.24	3.72	4.80	5.27	5.70	5.58	5.27	4.20	3.41	2.40	1.86	46.31

1) California Irrigation Management Information System (CIMIS), <http://www.cimis.water.ca.gov/cimis/welcome.jsp>, EvapoTranspiration (Eto) Zones Map, Zone 3

California Water Service Company - Bear Gulch
Water Supply and Demand Analysis and Projections

Worksheet 20

Precipitation Data

049792) WOODSIDE FIRE STN 1														
From Year=1973 To Year=2010														
	Precipitation											Total Snowfall		
	Mean	High	Year	Low	Year	1 Day Max.		>= 0.01 in.	>= 0.10 in.	>= 0.50 in.	>= 1.00 in.	Mean	High	Year
	in.	in.	-	in.	-	in.	dd/yyyy or yyyymmdd	# Days	# Days	# Days	# Days	in.	in.	-
January	5.95	13.86	1998	0.29	1976	4.15	4/2008	11	8	4	2	0	0	1974
February	5.66	17.42	1998	0.36	1995	3.21	3/1998	10	8	4	2	0.1	3	1976
March	4.47	12.49	1983	0	2008	2.6	31/1982	10	8	3	1	0	0	1973
April	1.75	6.14	1983	0	1977	2	4/2006	5	4	1	0	0	0	1973
May	0.69	3.22	1998	0	1975	0.88	27/1990	3	2	0	0	0	0	1973
June	0.14	0.9	1992	0	1973	0.86	30/1992	1	0	0	0	0	0	1973
July	0.03	0.57	1974	0	1973	0.52	8/1974	0	0	0	0	0	0	1973
August	0.13	2.15	1976	0	1973	0.86	20/1997	0	0	0	0	0	0	1973
September	0.25	1.28	1986	0	1974	0.87	19/1977	1	1	0	0	0	0	1973
October	1.31	3.65	1991	0	1978	3.55	26/1991	3	2	1	0	0	0	1973
November	3.77	10.53	1983	0	1995	3.53	8/2002	7	5	3	1	0	0	1973
December	5.44	20.5	2002	0	1989	4.7	9/2010	9	7	3	2	0	0	1973
Annual	29.57	59.86	1983	11.25	2007	4.7	20101209	60	45	20	9	0.1	3	1976

PAGE LEFT BLANK INTENTIONALLY

**California Water Service Company - Bear Gulch
Water Supply and Demand Analysis and Projections**

Worksheet 20a

Temperature & Rainfall History - Palo Alto

Year	Annual Average Temp.	Annual Average Rainfall	Rainfall Percent Variation	Demand per Service (Gal / Yr)	Percent of Average Demand	Year	Annual Average Temp.	Annual Average Rainfall	Rainfall Percent Variation	Demand per Service (Gal / Yr)	Percent of Average Demand
1970	58.3	23.40	53.2%			1995	60.0	23.43	53.4%	227,203	94.7%
1971	57.2	8.73	-42.8%			1996	60.3	20.66	35.3%	242,655	101.1%
1972	57.8	14.43	-5.5%			1997	60.5	16.09	5.4%	262,374	109.3%
1973	57.9	24.37	59.6%			1998	58.4	29.41	92.6%	231,202	96.3%
1974	57.5	11.95	-21.7%			1999	54.7	12.49	-18.2%	256,109	106.7%
1975	57.6	11.35	-25.7%			2000	54.9	17.19	12.6%	266,673	111.1%
1976	58.3	7.34	-51.9%			2001	56.6	17.00	11.3%	272,593	113.6%
1977	58.3	10.56	-30.8%			2002	57.0	16.67	9.1%	255,422	106.4%
1978	58.1	17.66	15.7%			2003	59.4	11.18	-26.8%	260,177	108.4%
1979	58.6	16.21	6.2%			2004	59.7	13.04	-14.6%	281,298	117.2%
1980	57.2	14.36	-6.0%	215,549	89.8%	2005	58.5	19.78	29.5%	250,333	104.3%
1981	58.9	17.43	14.1%	221,709	92.4%	2006	58.6	18.13	18.7%	254,767	106.1%
1982	56.4	24.94	63.3%	211,183	88.0%	2007	56.7	7.10	-53.5%	285,618	119.0%
1983	61.1	32.51	112.9%	214,386	89.3%	2008	55.8	13.76	-9.9%	283,994	118.3%
1984	58.6	11.11	-27.2%	248,828	103.7%	2009	55.8	12.15	-20.4%	256,598	106.9%
1985	57.8	11.19	-26.7%	245,145	102.1%	2010	59.2	18.96	24.2%	228,966	95.4%
1986	58.6	16.15	5.8%	252,980	105.4%	2011					
1987	59.6	11.88	-22.2%	255,621	106.5%	2012					
1988	58.6	9.57	-37.3%	214,783	89.5%	2013					
1989	57.8	8.43	-44.8%	218,554	91.0%	2014					
1990	57.3	8.07	-47.1%	213,662	89.0%	2015					
1991	56.5	12.65	-17.2%	176,074	73.4%	2016					
1992	58.2	15.80	3.5%	196,457	81.8%	2017					
1993	54.9	19.21	25.8%	214,466	89.3%	2018					
1994	54.6	13.27	-13.1%	214,841	89.5%	2019					

Source: Western Regional Climate Center:

<http://www.wrcc.dri.edu/cgi-bin/cliMAIN.pl?ca6646>

California Water Service Company - Bear Gulch
Water Supply and Demand Analysis and Projections

Worksheet 20a

Temperature Data

Station:(046646) PALO ALTO															
From Year=1953 To Year=2010															
	Monthly Averages			Daily Extremes				Monthly Extremes				Max. Temp.		Min. Temp.	
	Max.	Min.	Mean	High	Date	Low	Date	Highest Mean	Year	Lowest Mean	Year	>= 90 F	<= 32 F	<= 32 F	<= 0 F
	F	F	F	F	dd/yyyy or yyyymmdd	F	dd/yyyy or yyyymmdd	F	-	F	-	# Days	# Days	# Days	# Days
January	57.3	38.5	47.9	75	8/1962	21	13/1963	53	2003	43.4	1963	0	0	6.2	0
February	61.2	41.4	51.3	84	22/1981	24	27/1962	56.1	1963	43.9	1994	0	0	2	0
March	64.3	43.1	53.7	85	27/1988	22	31/2004	57.7	1978	50.1	1991	0	0	0.4	0
April	68.4	44.7	56.5	98	22/2009	31	25/1964	61.1	1989	50.2	1967	0.2	0	0.1	0
May	72.9	48.5	60.7	100	13/1976	33	6/1977	66	1997	55	1994	1.1	0	0	0
June	77.4	52.6	65	107	15/1961	40	3/1982	69.6	1981	59	1994	2.3	0	0	0
July	78.4	54.9	66.7	105	14/1972	41	19/1983	70.1	2006	62.4	1994	1.7	0	0	0
August	78.5	54.7	66.6	101	30/1968	44	4/1982	69.5	1971	64	1955	1.6	0	0	0
September	78.2	52.6	65.4	105	15/1971	41	20/1965	70.1	1984	59.8	1993	2.7	0	0	0
October	73	48	60.5	100	2/1980	34	30/1971	63.8	2003	56.8	1971	0.5	0	0	0
November	64.4	42.7	53.5	89	8/1955	15	7/2003	57.5	1981	48.3	1993	0	0	1.2	0
December	57.8	38.2	48	75	14/1953	20	23/1990	53	1955	42.5	1993	0	0	6.1	0
Annual	69.3	46.7	58	107	19610615	15	20031107	60.5	1997	54.6	1994	10.1	0	16	0

	Jan	Feb	Mar	Apr	May	Jun	Jul	Aug	Sep	Oct	Nov	Dec	Total
Monthly Average ETo Report	1.86	2.24	3.72	4.80	5.27	5.70	5.58	5.27	4.20	3.41	2.40	1.86	46.31

1) California Irrigation Management Information System (CIMIS), <http://www.cimis.water.ca.gov/cimis/welcome.jsp>, EvapoTranspiration (Eto) Zones Map, Zone 3

**California Water Service Company - Bear Gulch
Water Supply and Demand Analysis and Projections**

Worksheet 20a

Precipitation Data

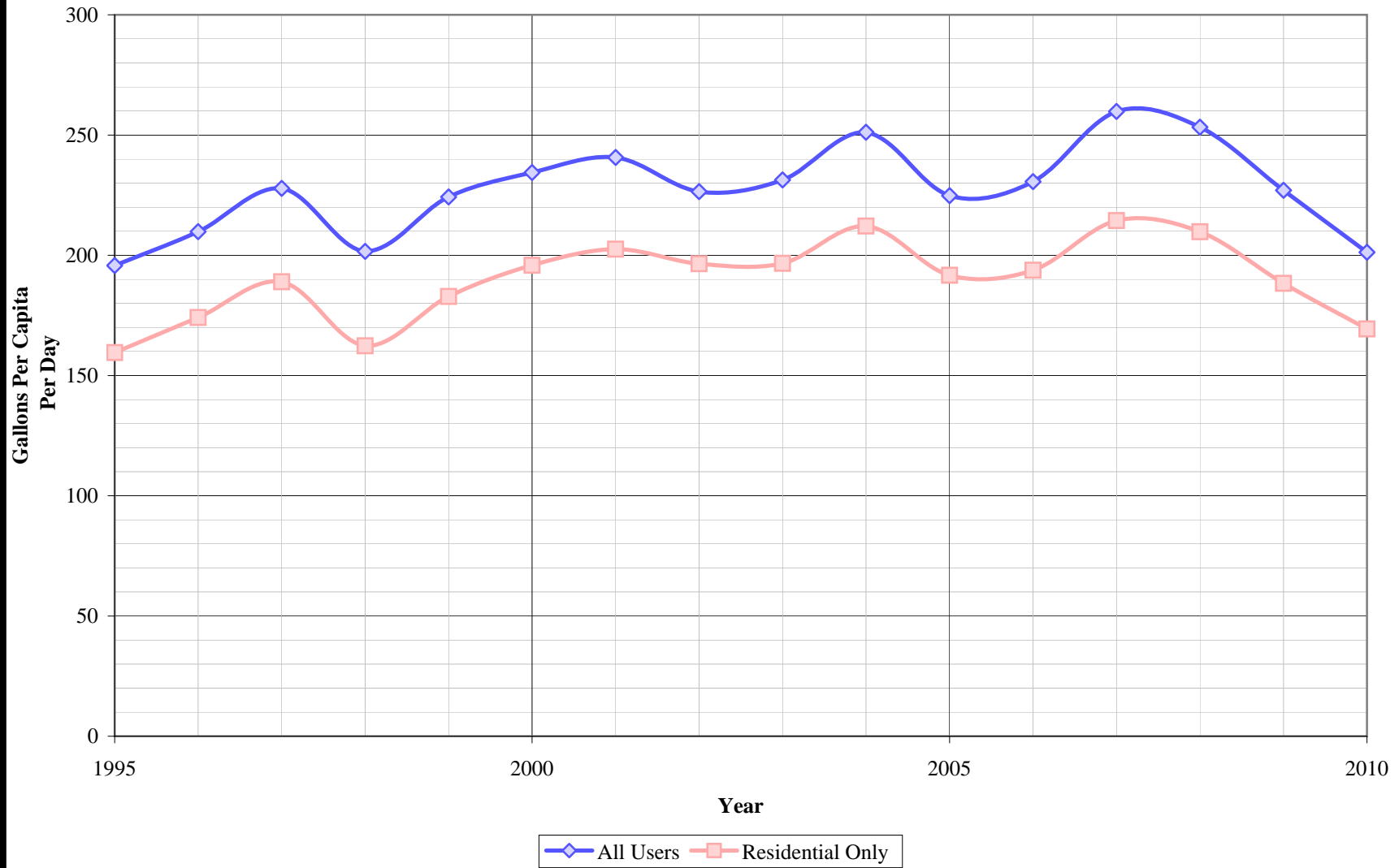
Station:(046646) PALO ALTO														
From Year=1953 To Year=2010														
Precipitation											Total Snowfall			
	Mean	High	Year	Low	Year	1 Day Max.		>=	>=	>=	>=	Mean	High	Year
	in.	in.	-	in.	-	in.	dd/yyyy or yyyymmdd	# Days	# Days	# Days	# Days	in.	in.	-
January	3.22	7.91	1995	0.08	2003	2.6	5/1982	10	6	2	1	0	1.5	1962
February	2.9	12.43	1998	0.13	1967	3.75	3/1998	9	6	2	1	0	0	1954
March	2.22	8.54	1983	0.04	1955	1.52	16/1958	9	5	1	0	0	0	1954
April	1.02	4.56	1958	0	2008	1.55	3/1958	5	3	1	0	0	0	1954
May	0.38	2.49	1998	0	1959	1.25	20/2002	2	1	0	0	0	0	1954
June	0.08	1.04	1995	0	1955	0.82	16/1995	1	0	0	0	0	0	1954
July	0.02	0.34	1980	0	1954	0.33	31/1966	0	0	0	0	0	0	1954
August	0.05	0.81	1976	0	1954	0.58	20/1997	0	0	0	0	0	0	1954
September	0.17	2.31	1959	0	1953	1.78	19/1959	1	0	0	0	0	0	1953
October	0.72	3.72	1972	0	1955	1.86	13/1962	3	2	1	0	0	0	1953
November	1.75	6.31	1972	0	1959	2.48	29/1970	6	4	1	0	0	0	1953
December	2.74	10.56	1955	0.01	1989	2.77	22/1955	9	6	2	1	0	0	1953
Annual	15.27	32.51	1983	7.1	2007	3.75	19980203	56	34	10	2	0	1.5	1962

**California Water Service Company - Bear Gulch District
Water Supply and Demand Analysis and Projections**

Groundwater Production Facilities

District does not have groundwater production facilities

Bear Gulch District Per Capita Consumption



California Water Service Company - Bear Gulch District
Water Supply and Demand Analysis and Projections

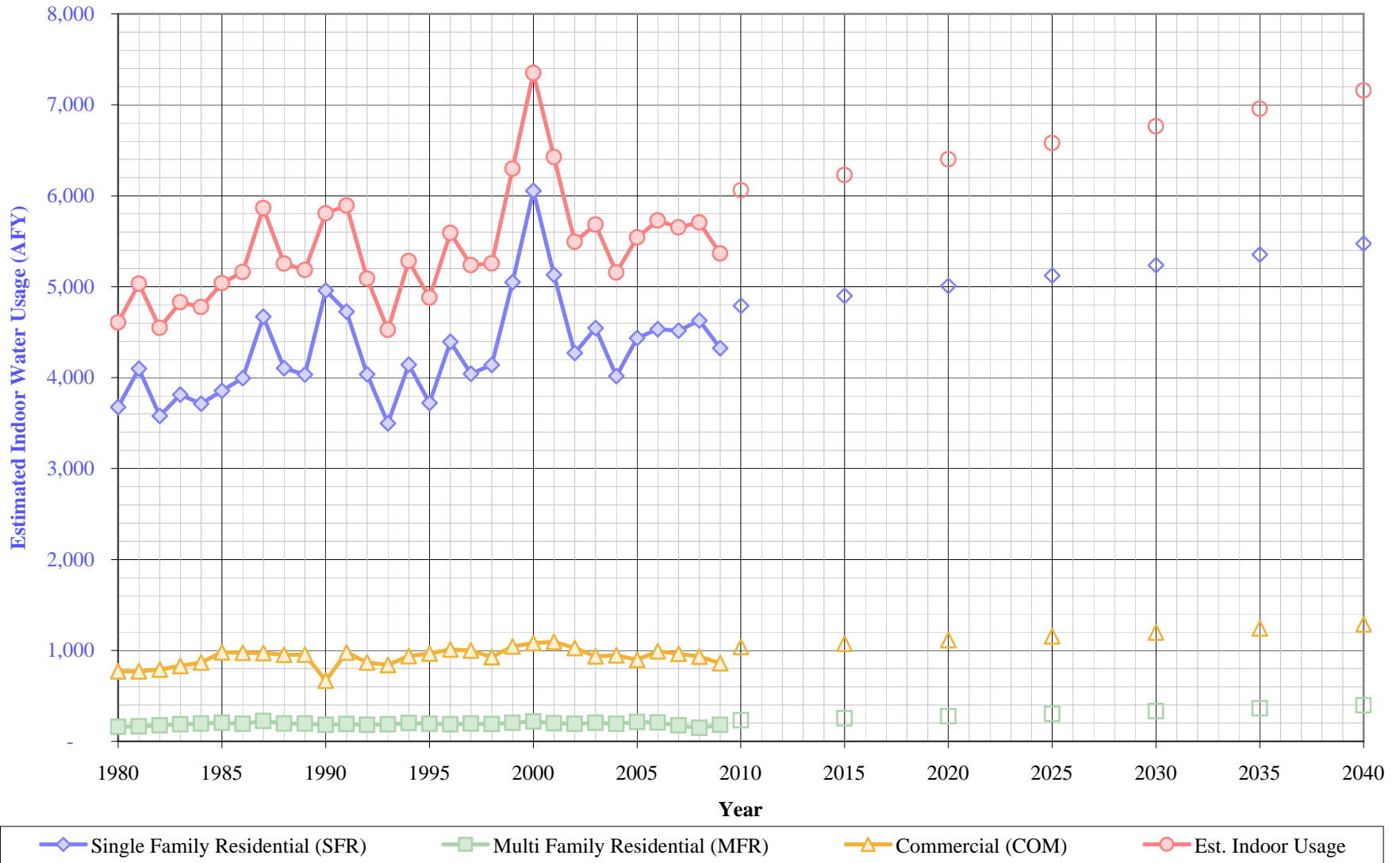
Per Capita Water Demand Calculation

Year	All Users			Residential Only		
	Usage (AFY)	Usage (MGY)	Gallons Per Capita Per Day	Usage (AFY)	Usage (MGY)	Gallons Per Capita Per Day
1995	11,849	3,861	196	9,656	3,147	160
1996	12,666	4,127	210	10,511	3,425	174
1997	13,780	4,490	228	11,433	3,725	189
1998	12,212	3,979	202	9,832	3,204	162
1999	13,563	4,419	224	11,060	3,604	183
2000	14,149	4,610	234	11,822	3,852	196
2001	14,518	4,731	241	12,218	3,981	203
2002	13,639	4,444	226	11,835	3,856	196
2003	13,861	4,517	231	11,783	3,840	197
2004	15,008	4,890	251	12,679	4,131	212
2005	13,527	4,408	225	11,536	3,759	192
2006	13,858	4,516	231	11,644	3,794	194
2007	15,554	5,068	260	12,837	4,183	214
2008	15,510	5,054	253	12,846	4,186	210
2009	14,245	4,642	227	11,817	3,850	188
2010	12,907	4,206	201	10,862	3,539	169
5 Yr. Avg.	14,415	4,697	234	12,001	3,911	195
10 Yr. Avg.	14,263	4,648	235	12,006	3,912	198

Five year average is from years 2006 through 2010

Ten year average is from years 2001 through 2010

Bear Gulch District Estimated Indoor Water Usage



California Water Service Company - Bear Gulch District
Water Supply and Demand Analysis and Projections

Estimated Indoor/Outdoor Water Usage

Year	Single Family Residential (SFR)							Multi Family Residential (MFR)				Commercial (COM)				Est. Indoor Usage AFY
	Metered Single Family Residential Indoor Use			Indoor Flat Rate Usage (AFY)	Total SFR Indoor Usage			Multi Family Residential January Usage		Multi Family Residential Indoor Use		Commercial (CCF)	Commercial Indoor Use (Annualized 90% of January Total)			
	JAN (CCF)	AFY	AFY/Service		AFY	GPD/Service	%	CCF	AFY	GPD/Service	%		AFY	GPD/Service	%	
				AFY								GPD/Service				
1980	148,266	3,676	0.250	0.0	3,676	223.48	44%	6,405	159	2,286.60	72.4%	31,057	770	556.17	72.7%	4,605
1981	165,298	4,098	0.278	0.0	4,098	247.76	47%	6,625	164	2,327.60	70.5%	31,114	771	554.49	69.1%	5,034
1982	144,371	3,579	0.242	0.0	3,579	215.93	44%	7,106	176	2,496.59	72.6%	31,874	790	564.40	72.3%	4,546
1983	153,747	3,812	0.257	0.0	3,812	229.86	46%	7,559	187	2,655.75	76.9%	33,486	830	590.11	71.2%	4,830
1984	149,730	3,712	0.250	0.0	3,712	223.46	39%	7,903	196	2,776.61	73.8%	35,039	869	609.24	65.6%	4,777
1985	155,480	3,855	0.259	0.0	3,855	231.15	40%	8,208	204	2,930.27	77.0%	39,504	979	683.11	74.3%	5,038
1986	161,138	3,995	0.267	0.0	3,995	238.57	41%	7,770	193	2,773.91	70.4%	39,279	974	675.01	69.2%	5,162
1987	188,364	4,670	0.310	0.0	4,670	277.01	46%	9,021	224	3,220.52	82.3%	39,142	970	669.02	68.5%	5,864
1988	165,552	4,105	0.271	0.0	4,105	241.82	48%	7,915	196	2,737.37	82.1%	38,394	952	652.70	72.8%	5,253
1989	162,675	4,033	0.264	0.0	4,033	236.13	47%	7,878	195	2,724.57	81.2%	38,482	954	653.70	73.1%	5,183
1990	199,962	4,958	0.323	0.0	4,958	288.51	58%	7,295	181	2,522.95	75.6%	26,892	667	457.52	51.5%	5,805
1991	190,605	4,726	0.307	0.0	4,726	273.67	67%	7,622	189	2,636.04	84.6%	39,454	978	672.79	83.7%	5,893
1992	162,797	4,036	0.261	0.0	4,036	233.17	50%	7,343	182	2,539.55	77.2%	35,054	869	601.00	72.8%	5,087
1993	141,124	3,499	0.226	0.0	3,499	201.72	40%	7,492	186	2,591.08	74.4%	33,856	839	586.36	65.0%	4,524
1994	167,085	4,143	0.267	0.0	4,143	238.45	45%	8,076	200	2,793.05	79.8%	37,838	938	656.87	70.9%	5,281
1995	150,028	3,720	0.239	0.0	3,720	213.80	40%	7,815	194	2,702.79	76.3%	38,922	965	675.16	70.7%	4,878
1996	177,203	4,393	0.283	0.0	4,393	252.35	43%	7,553	187	2,612.17	72.3%	40,719	1,010	705.78	70.0%	5,590
1997	163,073	4,043	0.258	0.0	4,043	230.64	36%	7,875	195	2,723.54	75.3%	40,282	999	700.40	68.4%	5,237
1998	166,923	4,139	0.263	0.0	4,139	234.69	43%	7,701	191	2,663.36	74.1%	37,349	926	648.38	67.5%	5,256
1999	203,642	5,049	0.320	0.0	5,049	285.55	47%	8,264	205	2,858.07	79.3%	42,120	1,044	730.63	72.1%	6,298
2000	244,191	6,054	0.383	0.0	6,054	341.74	52%	8,750	217	3,026.15	80.8%	43,520	1,079	754.92	69.9%	7,350
2001	206,975	5,132	0.323	0.0	5,132	288.58	43%	8,024	199	2,775.07	75.1%	44,159	1,095	763.01	72.4%	6,425
2002	172,301	4,272	0.268	0.0	4,272	239.57	37%	7,809	194	2,700.71	82.6%	41,421	1,027	716.26	76.2%	5,493
2003	183,280	4,544	0.286	0.0	4,544	255.30	39%	8,241	204	2,850.12	82.4%	37,698	935	652.91	67.9%	5,683
2004	162,023	4,017	0.252	0.0	4,017	225.39	32%	7,721	191	2,670.28	77.1%	38,145	946	661.16	67.3%	5,154
2005	178,842	4,434	0.275	0.0	4,434	245.35	39%	8,501	211	2,940.04	84.3%	36,130	896	622.82	64.9%	5,541
2006	182,847	4,533	0.279	0.0	4,533	248.98	40%	8,284	205	2,910.46	81.9%	39,943	990	689.09	70.4%	5,729
2007	182,125	4,515	0.278	0.0	4,515	247.92	36%	7,057	175	2,479.38	74.0%	38,800	962	666.26	69.3%	5,652
2008	186,639	4,627	0.285	0.0	4,627	254.19	37%	5,924	147	1,846.80	63.7%	37,585	932	623.97	64.3%	5,706
2009	174,429	4,325	0.262	0.0	4,325	234.00	37%	7,324	182	2,133.03	74.3%	34,673	860	560.19	64.2%	5,366
2010					4,791	258.10	39%		231	2,663.48	78%		1,037	671.06	69%	6,059
2015					4,899	258.10	39%		253	2,663.48	78%		1,075	671.06	69%	6,227
2020					5,009	258.10	39%		276	2,663.48	78%		1,114	671.06	69%	6,400
2025					5,121	258.10	39%		303	2,663.48	78%		1,155	671.06	69%	6,579
2030					5,236	258.10	39%		331	2,663.48	78%		1,197	671.06	69%	6,764
2035					5,354	258.10	39%		362	2,663.48	78%		1,241	671.06	69%	6,957
2040					5,474	258.10	39%		396	2,663.48	78%		1,286	671.06	69%	7,157

California Water Service Company - Bear Gulch District

Water Supply and Demand Analysis and Projections

Comparison of Projected Demand and Conservation Savings Between SBx7-7 Compliance Targets and Actual Proposed Programs

Year	SBx7-7 Compliance Target (gpcd)	Anticipated GPCD with Proposed Programs*	Estimated Population	Undadjusted Baseline Demand (AFY)	SBx7-7 Compliance Target Demand (AFY)	Anticipated Demand with Proposed Programs (AFY)	Compliance Target Savings Requirement (AFY)	Savings Due to Proposed Programs (AFY)
2005-2009 Average	239	239	54,302	14,539	14,539	14,539	0	0
2010	239	239	57,254	15,329	15,329	15,329	0	0
2011	234	236	56,534	15,137	14,820	14,945	317	192
2012	229	234	56,829	15,216	14,578	14,896	637	320
2013	224	232	57,127	15,295	14,335	14,846	961	449
2014	219	229	57,429	15,376	14,088	14,731	1,288	645
2015	214	228	57,733	15,458	13,839	14,745	1,618	713
2016	209	220	58,041	15,540	13,601	14,329	1,939	1,211
2017	204	213	58,352	15,623	13,360	13,909	2,263	1,714
2018	200	205	58,666	15,707	13,117	13,485	2,591	2,223
2019	195	198	58,984	15,792	12,871	13,056	2,922	2,737
2020	190	190	59,305	15,878	12,622	12,622	3,257	3,257
2021	190	190	59,630	15,965	12,691	12,691	3,275	3,275
2022	190	190	59,958	16,053	12,761	12,761	3,293	3,293
2023	190	190	60,290	16,142	12,831	12,831	3,311	3,311
2024	190	190	60,626	16,232	12,903	12,903	3,329	3,329
2025	190	190	60,965	16,323	12,975	12,975	3,348	3,348
2026	190	190	61,308	16,415	13,048	13,048	3,367	3,367
2027	190	190	61,655	16,508	13,122	13,122	3,386	3,386
2028	190	190	62,006	16,601	13,197	13,197	3,405	3,405
2029	190	190	62,360	16,696	13,272	13,272	3,424	3,424
2030	190	190	62,719	16,792	13,348	13,348	3,444	3,444
2031	190	190	63,081	16,890	13,425	13,425	3,464	3,464
2032	190	190	63,448	16,988	13,503	13,503	3,484	3,484
2033	190	190	63,819	17,087	13,582	13,582	3,505	3,505
2034	190	190	64,194	17,187	13,662	13,662	3,525	3,525
2035	190	190	64,573	17,289	13,743	13,743	3,546	3,546
2036	190	190	64,956	17,392	13,825	13,825	3,567	3,567
2037	190	190	65,344	17,495	13,907	13,907	3,588	3,588
2038	190	190	65,737	17,600	13,991	13,991	3,610	3,610
2039	190	190	66,133	17,707	14,075	14,075	3,632	3,632
2040	190	190	66,535	17,814	14,160	14,160	3,654	3,654

*Note: The district is not projected to achieve its district-specific 2015 SBx7-7 compliance target through the proposed 2011-2015 conservation program portfolio. The district will achieve compliance with its 2015 SBx7-7 compliance target through a regional alliance. For the purpose of this analysis it is assumed that there will be a linear reduction in GPCD from 2015-2020 to achieve the district-specific 2020 SBx7-7 compliance target. The district may ultimately elect to achieve 2020 SBx7-7 compliance through a regional alliance. GPCD will remain flat from 2020 through 2040.