

Water Resources Planning Department

Water Supply / Demand Analysis and Projections
for the
King City District

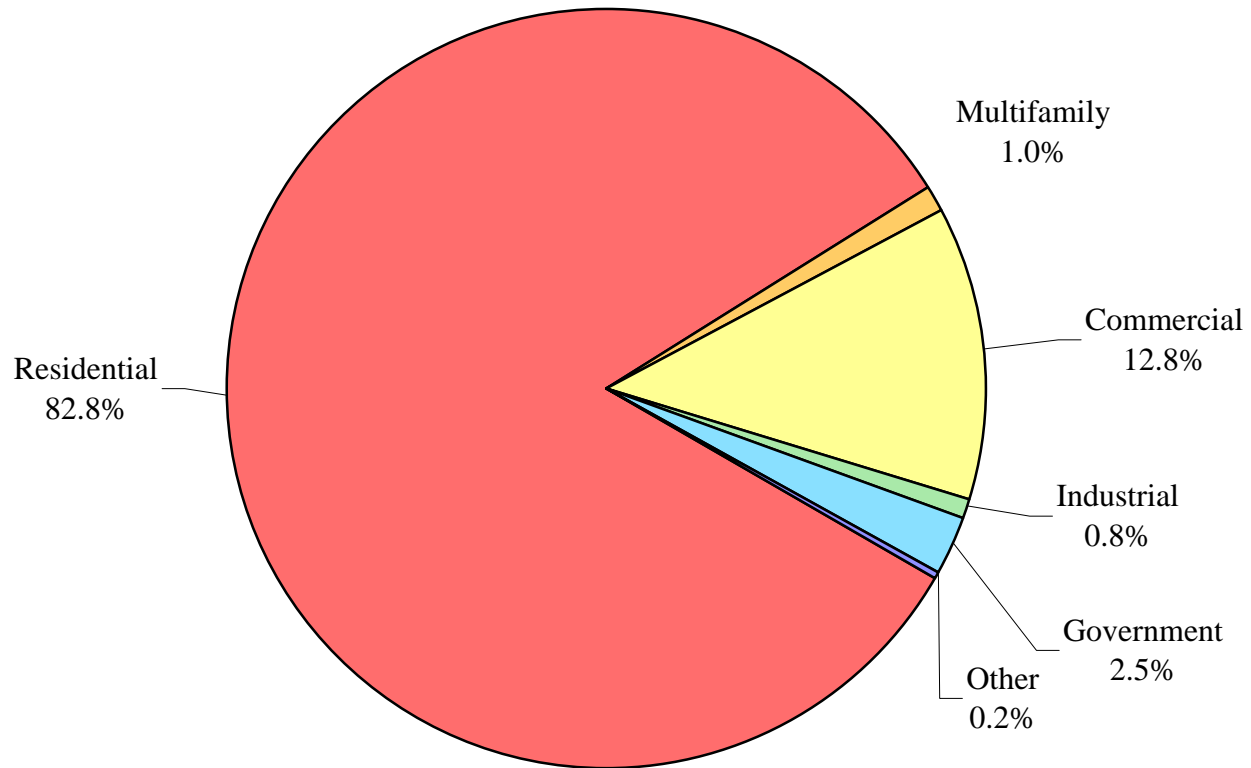
2010



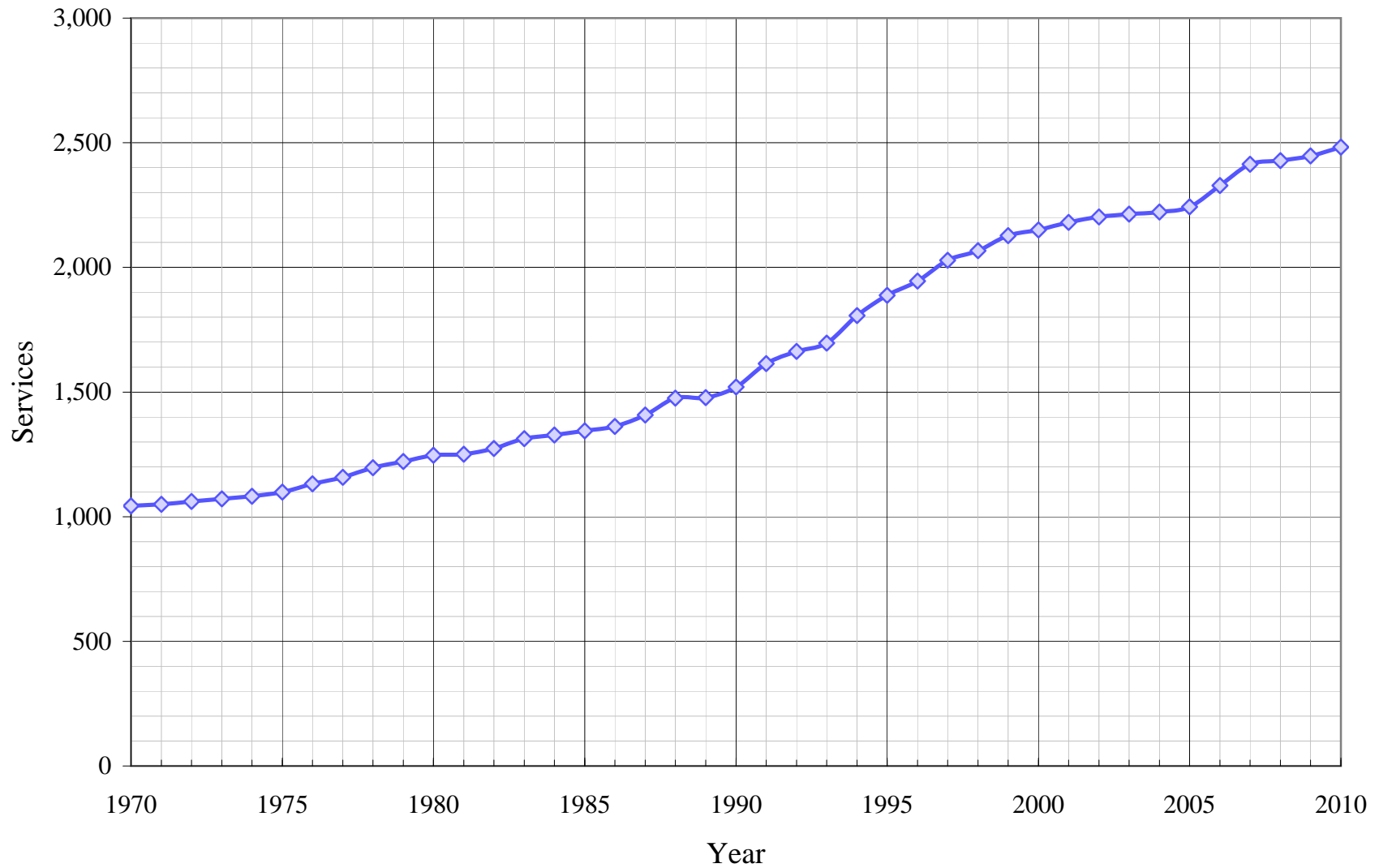
Table of Contents for Worksheets

Worksheet	Title
1	Annual Services
2	Service Growth Percentage
3	District Sales (ccf)
4	District Sales (AF)
5	Demand per Service (Gallons/Service/Year)
6	Demand per Service (Gallons per Day)
7	Percentage Change in Annual Demand
8	Percentage of Total Sales
9	Percentage of Total Demand
10	Demand Scenario 1 (Low Demand Projection)
11	Demand Scenario 2 (Average Demand Projection)
12	Demand Scenario 3 (High Demand Projection)
13	Demand Scenario 4 (Alternate Service Projection)
14	Not used
15	Actual & Projected Annual Average Services
16	Actual & Projected Demand in Acre-Feet
17	Projected Annual Supply by Source
18	Historical and Projected Average Day, Maximum Day, and Peak Demands
19	Population as of the 2000 Average Annual Services
20	Temperature & Rainfall History
21	Groundwater Facilities (if available)
22	Per Capita Water Demand Calculation
23	Indoor/Outdoor Water Usage
24	SB-7 Compliance Demand Worksheet

King City District Distribution of Services (2009)



King City District Historical Services



California Water Service Company - King City District
Water Supply and Demand Analysis and Projections
Average Annual Services

Year	Multi-Res.						Total	Annual Change
	Residential	Multifamily	Units	Commercial	Industrial	Government		
1970	794	0	0	217	6	25	1,043	
1971	800	0	0	216	6	27	1,050	7
1972	811	0	0	218	5	27	1,061	11
1973	816	0	0	221	5	28	1,071	10
1974	821	8	0	219	5	28	1,082	11
1975	835	8	0	222	5	28	1,099	17
1976	864	8	0	227	5	28	1,132	33
1977	888	8	0	229	5	28	1,158	26
1978	927	8	0	229	5	27	1,196	38
1979	951	8	0	231	5	26	1,221	25
1980	971	8	99	234	5	27	1,246	25
1981	978	8	99	231	5	28	1,251	5
1982	1,000	8	99	231	5	29	1,274	23
1983	1,034	8	99	235	5	30	1,313	39
1984	1,046	8	99	238	5	30	1,328	15
1985	1,062	8	99	237	5	31	1,344	16
1986	1,078	8	99	239	5	31	1,362	18
1987	1,121	8	99	239	6	32	1,408	46
1988	1,173	8	99	255	6	33	1,476	68
1989	1,174	8	101	257	6	32	1,478	2
1990	1,209	8	91	261	6	34	1,520	42
1991	1,291	8	99	270	6	34	1,614	94
1992	1,336	8	99	277	7	34	1,663	49
1993	1,368	8	99	275	8	35	1,696	33
1994	1,481	8	102	272	8	36	1,807	111
1995	1,564	8	100	269	8	36	1,888	81
1996	1,620	8	99	270	8	37	1,945	57
1997	1,696	8	99	273	10	37	2,028	83
1998	1,727	8	101	274	14	39	2,067	39
1999	1,787	10	101	271	16	40	2,127	60
2000	1,792	11	110	282	16	44	2,150	23
2001	1,795	13	126	303	16	49	2,180	30
2002	1,817	12	122	302	18	49	2,202	22
2003	1,831	12	202	302	19	47	2,214	12
2004	1,839	12	240	302	19	46	2,222	8
2005	1,863	11	234	303	18	43	2,243	21
2006	1,943	11	234	307	18	43	2,328	85
2007	2,023	11	119	316	18	43	2,414	86
2008	2,026	19	117	312	18	49	2,428	14
2009	2,026	24	118	312	19	60	2,447	19
2010	2,059	25	312	312	19	60	2,482	35
5 Yr. Avg.	1,976	15	164	310	18	48	2,372	45
10 Yr. Avg.	1,896	14	162	304	18	47	2,283	32
20 Yr. Avg.	1,702	11	131	288	14	42	2,059	48

Five year average = 2005 through 2009.

Ten year average = 2000 through 2009.

Twenty year average = 1990 through 2009.

California Water Service Company - King City District
Water Supply and Demand Analysis and Projections
Service Growth Percentage

Worksheet 2

Year	Multi-Res.							Total
	Residential	Multifamily	units	Commercial	Industrial	Government	Other	
1980	2.10%	0.00%		1.30%	0.00%	3.85%		2.05%
1981	0.72%	0.00%	0.00%	-1.28%	0.00%	3.70%	0.00%	0.40%
1982	2.25%	0.00%	0.00%	0.00%	0.00%	3.57%	0.00%	1.84%
1983	3.40%	0.00%	0.00%	1.73%	0.00%	3.45%	0.00%	3.06%
1984	1.16%	0.00%	0.00%	1.28%	0.00%	0.00%	0.00%	1.14%
1985	1.53%	0.00%	0.00%	-0.42%	0.00%	3.33%	0.00%	1.20%
1986	1.51%	0.00%	0.00%	0.84%	0.00%	0.00%	0.00%	1.34%
1987	3.99%	0.00%	0.00%	0.00%	20.00%	3.23%	100.00%	3.38%
1988	4.64%	0.00%	0.00%	6.69%	0.00%	3.13%	-50.00%	4.83%
1989	0.09%	0.00%	2.02%	0.78%	0.00%	-3.03%	0.00%	0.14%
1990	2.98%	0.00%	-9.90%	1.56%	0.00%	6.25%	100.00%	2.84%
1991	6.78%	0.00%	8.79%	3.45%	0.00%	0.00%	150.00%	6.18%
1992	3.49%	0.00%	0.00%	2.59%	16.67%	0.00%	-80.00%	3.04%
1993	2.40%	0.00%	0.00%	-0.72%	14.29%	2.94%	100.00%	1.98%
1994	8.26%	0.00%	3.03%	-1.09%	0.00%	2.86%	0.00%	6.54%
1995	5.60%	0.00%	-1.96%	-1.10%	0.00%	0.00%	50.00%	4.48%
1996	3.58%	0.00%	-1.00%	0.37%	0.00%	2.78%	-33.33%	3.02%
1997	4.69%	0.00%	0.00%	1.11%	25.00%	0.00%	100.00%	4.27%
1998	1.83%	0.00%	2.02%	0.37%	40.00%	5.41%	25.00%	1.92%
1999	3.47%	25.00%	0.00%	-1.09%	14.29%	2.56%	-40.00%	2.90%
2000	0.28%	10.00%	8.91%	4.06%	0.00%	10.00%	66.67%	1.08%
2001	0.17%	18.18%	14.55%	7.45%	0.00%	11.36%	-20.00%	1.40%
2002	1.23%	-7.69%	-3.17%	-0.33%	12.50%	0.00%	0.00%	1.01%
2003	0.77%	0.00%	65.57%	0.00%	5.56%	-4.08%	-25.00%	0.54%
2004	0.44%	0.00%	18.81%	0.00%	0.00%	-2.13%	33.33%	0.36%
2005	1.31%	-8.33%	-2.50%	0.33%	-5.26%	-6.52%	25.00%	0.95%
2006	4.29%	0.00%	0.00%	1.32%	0.00%	0.00%	20.00%	3.79%
2007	4.12%	0.00%	-49.15%	2.93%	0.00%	0.00%	-50.00%	3.69%
2008	0.15%	72.73%	-1.68%	-1.27%	0.00%	13.95%	33.33%	0.58%
2009	0.00%	26.32%	0.85%	0.00%	5.56%	22.45%	50.00%	0.78%
2010	1.63%	4.17%	-100.00%	0.00%	0.00%	0.00%	16.67%	1.43%
5 Yr. Avg.	1.97%	18.14%	-10.50%	0.66%	0.06%	5.98%	15.67%	1.96%
10 Yr. Avg.	1.28%	11.12%	5.22%	1.45%	1.84%	4.50%	13.33%	1.42%
20 Yr. Avg.	2.79%	6.81%	2.66%	1.00%	6.43%	3.39%	25.25%	2.57%

Five year average = 2005 through 2009.

Ten year average = 2000 through 2009.

Twenty year average = 1990 through 2009.

California Water Service Company - King City District

Worksheet 3

Water Supply and Demand Analysis and Projections

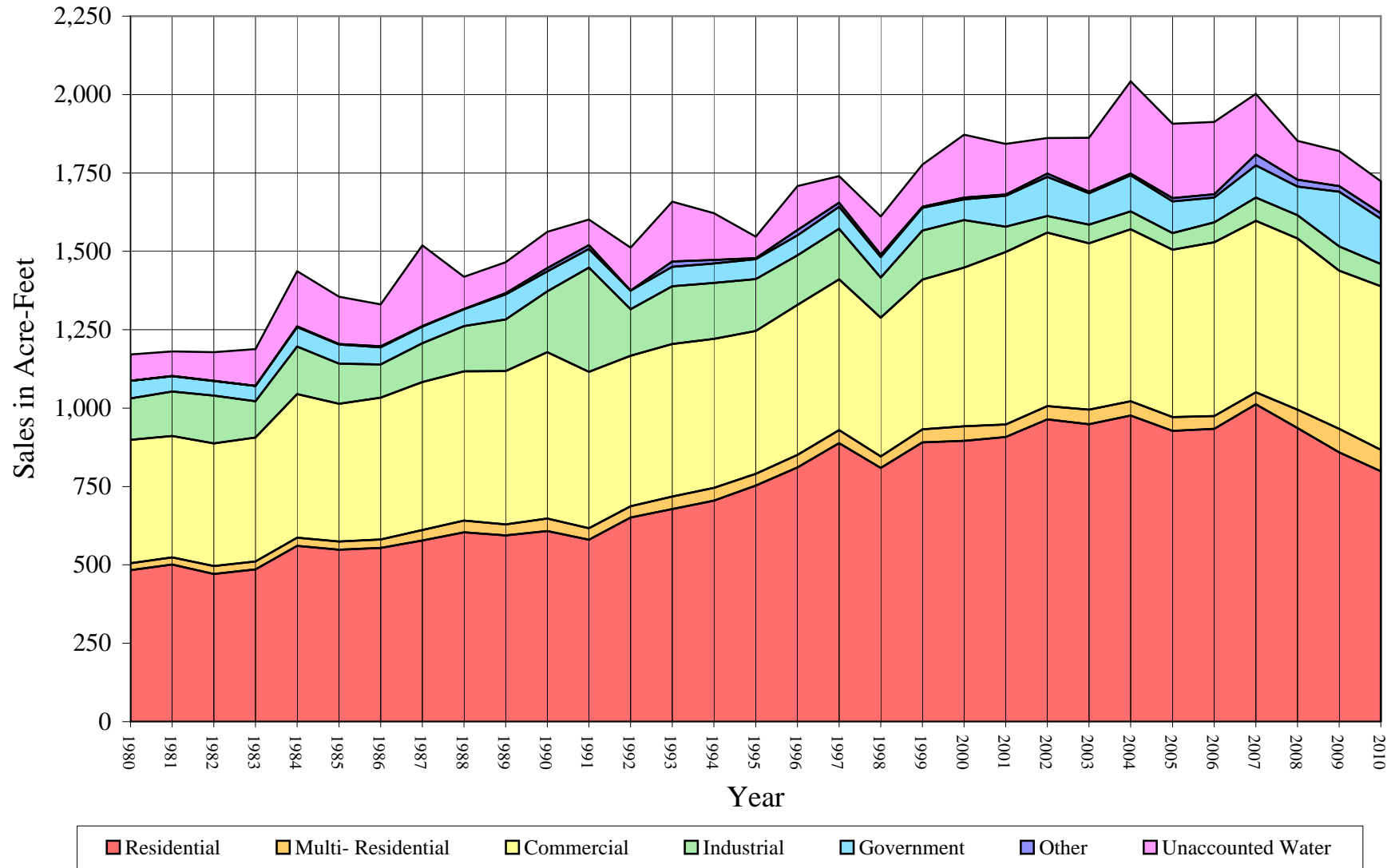
Sales (ccf)

Year	Residential	Multi-Residential	Commercial	Industrial	Government	Other	Unaccounted Water	Total(ccf) Sales	Total(ccf) Demand	Total(kgal) Demand
1980	210,398	9,647	171,360	57,719	24,451	100	36,319	473,675	509,994	381,502
1981	218,460	9,926	168,658	61,707	21,058	303	34,244	480,112	514,356	384,765
1982	205,104	11,055	170,246	66,577	20,372	142	39,835	473,496	513,331	383,998
1983	211,395	11,176	172,197	50,324	21,197	79	51,190	466,368	517,558	387,160
1984	244,300	11,428	199,513	65,768	27,250	910	76,634	549,169	625,803	468,133
1985	238,996	11,220	191,261	55,733	26,870	533	65,818	524,613	590,431	441,673
1986	241,339	11,915	196,768	46,249	23,734	1,426	58,169	521,431	579,600	433,571
1987	251,525	14,782	205,417	53,884	23,122	656	112,298	549,386	661,684	494,974
1988	262,888	16,647	207,061	62,902	23,463	365	44,571	573,326	617,897	462,219
1989	258,912	15,011	213,041	71,899	34,524	1,849	43,071	595,236	638,307	477,487
1990	264,743	17,563	231,096	84,513	27,480	4,758	50,407	630,153	680,560	509,094
1991	252,771	16,002	217,209	144,678	25,911	5,375	35,661	661,946	697,607	521,846
1992	283,530	15,842	209,014	64,386	25,910	258	59,548	598,940	658,488	492,583
1993	295,230	17,498	212,004	79,985	27,115	7,363	83,181	639,195	722,376	540,375
1994	307,142	17,778	206,674	77,982	26,888	5,035	64,975	641,499	706,474	528,479
1995	328,074	16,303	198,514	71,971	27,693	1,407	29,720	643,962	673,682	503,949
1996	353,311	17,158	208,630	68,700	27,789	7,264	61,176	682,852	744,028	556,572
1997	386,925	18,062	209,335	70,329	30,721	5,452	36,991	720,824	757,815	566,885
1998	352,650	15,951	192,675	55,636	28,321	3,645	52,921	648,878	701,799	524,982
1999	387,949	17,996	208,278	68,214	31,469	1,203	58,609	715,109	773,718	578,781
2000	390,152	20,274	220,400	66,006	28,858	2,494	87,094	728,184	815,278	609,870
2001	395,606	17,317	239,421	35,403	42,976	1,647	70,339	732,370	802,709	600,468
2002	419,882	18,419	241,160	23,203	53,982	4,711	49,549	761,357	810,906	606,600
2003	413,071	20,300	231,279	25,781	43,564	2,241	74,753	736,236	810,989	606,662
2004	425,182	19,800	239,158	24,833	49,949	2,683	127,847	761,605	889,452	665,356
2005	403,941	19,248	232,576	22,805	44,153	4,714	103,298	727,437	830,735	621,433
2006	406,678	17,941	241,180	27,684	34,516	4,670	100,637	732,669	833,306	623,356
2007	440,870	16,864	237,893	32,465	44,859	15,183	84,224	788,134	872,358	652,569
2008	407,895	25,493	237,909	32,212	39,770	9,589	54,132	752,868	807,000	603,678
2009	373,988	32,698	219,696	34,010	75,752	7,948	48,509	744,092	792,601	592,907
2010	348,050	29,579	227,089	30,985	62,890	7,807	44,489	706,400	750,889	561,704
5 Yr. Avg.	406,674	22,449	233,851	29,835	47,810	8,421	78,160	749,040	827,200	618,789
10 Yr. Avg.	407,727	20,835	234,067	32,440	45,838	5,588	80,038	746,495	826,533	618,290

Five year average is from years 2005 through 2009.

Ten year average is from years 2000 through 2009.

King City District Historical Sales



California Water Service Company - King City District

Worksheet 4

Water Supply and Demand Analysis and Projections

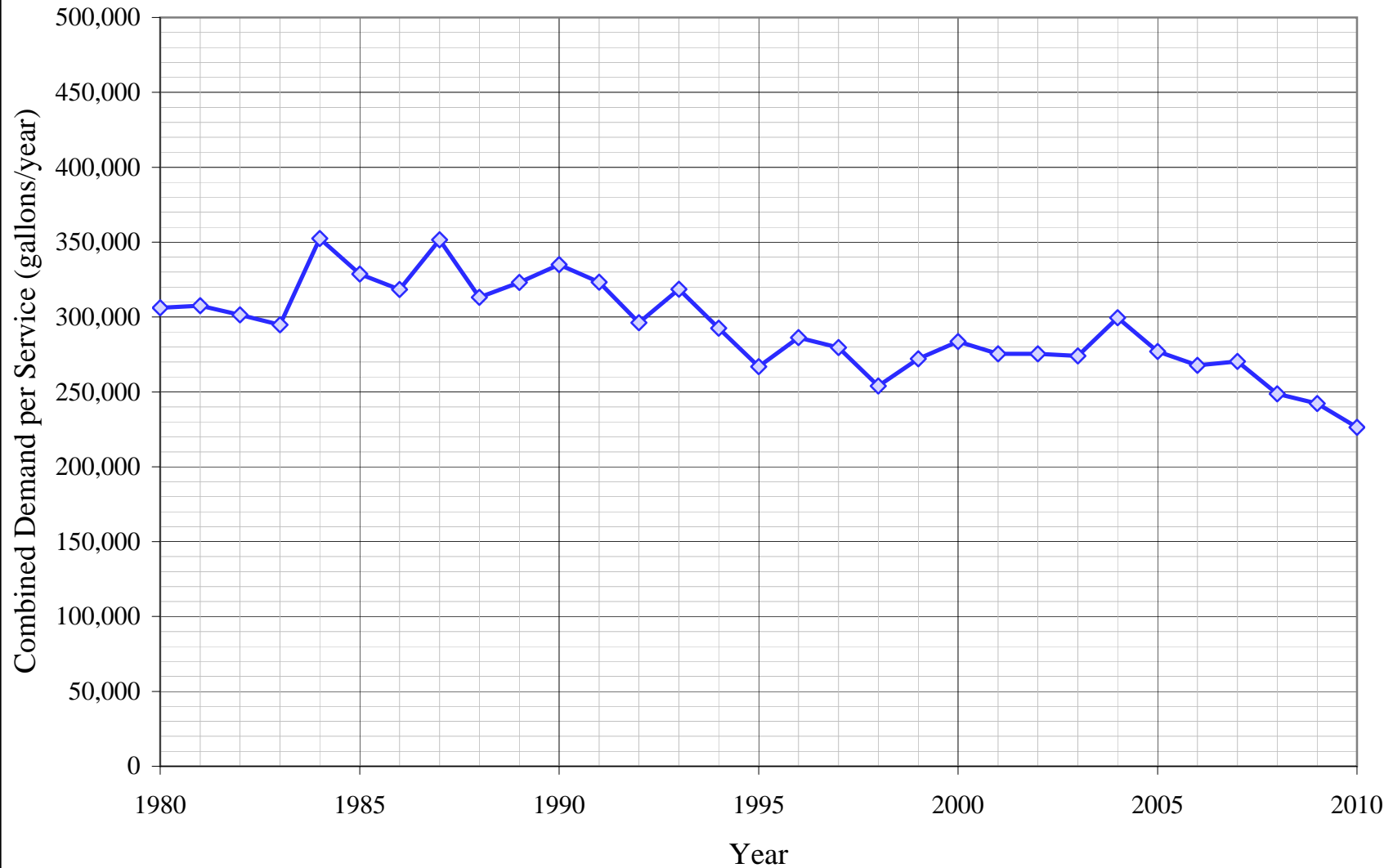
Sales (AF)

Year	Multi-							Unaccounted Water	Total(AF) Sales	Total(AF) Demand	Total(Mgal) Demand
	Residential	Residential	Commercial	Industrial	Government	Other					
1980	483	22	393	133	56	0	83	1,087	1,171	382	
1981	502	23	387	142	48	1	79	1,102	1,181	385	
1982	471	25	391	153	47	0	91	1,087	1,178	384	
1983	485	26	395	116	49	0	118	1,071	1,188	387	
1984	561	26	458	151	63	2	176	1,261	1,437	468	
1985	549	26	439	128	62	1	151	1,204	1,355	442	
1986	554	27	452	106	54	3	134	1,197	1,331	434	
1987	577	34	472	124	53	2	258	1,261	1,519	495	
1988	604	38	475	144	54	1	102	1,316	1,418	462	
1989	594	34	489	165	79	4	99	1,366	1,465	477	
1990	608	40	531	194	63	11	116	1,447	1,562	509	
1991	580	37	499	332	59	12	82	1,520	1,601	522	
1992	651	36	480	148	59	1	137	1,375	1,512	493	
1993	678	40	487	184	62	17	191	1,467	1,658	540	
1994	705	41	474	179	62	12	149	1,473	1,622	528	
1995	753	37	456	165	64	3	68	1,478	1,547	504	
1996	811	39	479	158	64	17	140	1,568	1,708	557	
1997	888	41	481	161	71	13	85	1,655	1,740	567	
1998	810	37	442	128	65	8	121	1,490	1,611	525	
1999	891	41	478	157	72	3	135	1,642	1,776	579	
2000	896	47	506	152	66	6	200	1,672	1,872	610	
2001	908	40	550	81	99	4	161	1,681	1,843	600	
2002	964	42	554	53	124	11	114	1,748	1,862	607	
2003	948	47	531	59	100	5	172	1,690	1,862	607	
2004	976	45	549	57	115	6	293	1,748	2,042	665	
2005	927	44	534	52	101	11	237	1,670	1,907	621	
2006	934	41	554	64	79	11	231	1,682	1,913	623	
2007	1,012	39	546	75	103	35	193	1,809	2,003	653	
2008	936	59	546	74	91	22	124	1,728	1,853	604	
2009	859	75	504	78	174	18	111	1,708	1,820	593	
2010	799	68	521	71	144	18	102	1,622	1,724	562	
5 Yr. Avg.	934	52	537	68	110	19	179	1,720	1,899	619	
10 Yr. Avg.	936	48	537	74	105	13	184	1,714	1,897	618	

Five year average is from years 2005 through 2009.

Ten year average is from years 2000 through 2009.

King City District Historical Demand per Service



California Water Service Company - King City District

Worksheet 5

Water Supply and Demand Analysis and Projections

Demand per Service (Gallons per Year)

Year	Multi-Residential			Commercial	Industrial	Government	Total Other	Unaccounted/ Total Services	Combined Demand/Serv
	Residential	(service)	(unit)						
1980	162,089	902,057	72,894	547,804	8,635,363	677,430	37,403	21,805	306,181
1981	167,096	928,146	75,002	546,169	9,232,009	562,589	113,330	20,477	307,566
1982	153,428	1,033,714	83,532	551,311	9,960,612	525,494	106,223	23,390	301,411
1983	152,935	1,045,029	84,447	548,137	7,528,994	528,549	29,548	29,164	294,867
1984	174,712	1,068,592	86,351	627,084	9,839,577	679,481	680,727	43,167	352,510
1985	168,344	1,049,143	84,779	603,684	8,338,236	648,392	398,712	36,633	328,626
1986	167,471	1,114,130	90,031	615,869	6,919,331	572,718	1,066,722	31,948	318,334
1987	167,845	1,382,213	111,694	642,940	6,718,006	540,514	245,361	59,662	351,544
1988	167,650	1,556,603	125,786	607,421	7,842,328	531,865	136,519	22,589	313,157
1989	164,974	1,403,626	111,178	620,100	8,964,032	807,055	1,383,148	21,799	323,063
1990	163,806	1,642,255	144,374	662,344	10,536,686	604,602	1,779,616	24,807	334,930
1991	146,465	1,496,291	120,912	601,791	18,037,778	570,082	804,156	16,528	323,325
1992	158,754	1,481,330	119,703	564,452	6,880,582	570,060	192,997	26,786	296,201
1993	161,438	1,636,177	132,216	576,691	7,479,117	579,527	2,753,953	36,689	318,617
1994	155,137	1,662,359	130,381	568,393	7,291,824	558,712	1,883,221	26,898	292,462
1995	156,916	1,524,436	121,955	552,040	6,729,756	575,439	350,836	11,775	266,922
1996	163,145	1,604,385	129,647	578,023	6,423,897	561,827	2,716,925	23,529	286,155
1997	170,660	1,688,914	136,478	573,602	5,260,975	621,106	1,019,595	13,645	279,529
1998	152,751	1,491,522	118,140	526,025	2,972,759	543,220	545,330	19,152	253,983
1999	162,398	1,346,194	133,287	574,918	3,189,226	588,511	299,969	20,612	272,111
2000	162,865	1,378,728	137,873	584,648	3,085,995	490,620	373,128	30,303	283,660
2001	164,866	996,463	102,810	591,087	1,655,205	656,087	308,010	24,136	275,444
2002	172,864	1,148,197	112,937	597,352	964,281	824,109	881,018	16,833	275,477
2003	168,759	1,265,455	75,176	572,877	1,015,028	693,365	558,795	25,257	274,012
2004	172,952	1,234,286	61,714	592,393	977,704	812,271	501,756	43,040	299,440
2005	162,195	1,308,955	61,532	574,188	947,740	768,110	705,263	34,450	277,054
2006	156,570	1,220,073	57,354	587,672	1,150,504	600,460	582,234	32,337	267,765
2007	163,022	1,146,832	106,010	563,153	1,349,195	780,392	3,785,891	26,099	270,327
2008	150,605	1,003,689	162,992	570,411	1,338,681	607,143	1,793,268	16,678	248,632
2009	138,086	1,019,159	207,286	526,744	1,339,013	944,441	990,920	14,829	242,300
2010	126,449	885,065	#DIV/0!	544,469	1,219,915	784,083	834,292	13,409	226,311
5 Yr. Avg.	154,096	1,139,741	119,035	564,433	1,225,027	740,109	1,571,515	24,879	261,215
10 Yr. Avg.	161,278	1,172,184	108,568	576,052	1,382,335	717,700	1,048,028	26,396	271,411

Five year average is from years 2005 through 2009.

Ten year average is from years 2000 through 2009.

California Water Service Company - King City District

Worksheet 6

Water Supply and Demand Analysis and Projections

Demand per Service (Gallons per Day)

Year	Multi-Residential			Commercial	Industrial	Government	Total Other	Unaccounted/ Total Services	Combined Demand/Serv
	Residential	(service)	(unit)						
1980	444	2,471	200	1,501	23,659	1,856	102	60	839
1981	458	2,543	205	1,496	25,293	1,541	310	56	843
1982	420	2,832	229	1,510	27,289	1,440	291	64	826
1983	419	2,863	231	1,502	20,627	1,448	81	80	808
1984	479	2,928	237	1,718	26,958	1,862	1,865	118	966
1985	461	2,874	232	1,654	22,844	1,776	1,092	100	900
1986	459	3,052	247	1,687	18,957	1,569	2,923	88	872
1987	460	3,787	306	1,761	18,405	1,481	672	163	963
1988	459	4,265	345	1,664	21,486	1,457	374	62	858
1989	452	3,846	305	1,699	24,559	2,211	3,789	60	885
1990	449	4,499	396	1,815	28,868	1,656	4,876	68	918
1991	401	4,099	331	1,649	49,419	1,562	2,203	45	886
1992	435	4,058	328	1,546	18,851	1,562	529	73	812
1993	442	4,483	362	1,580	20,491	1,588	7,545	101	873
1994	425	4,554	357	1,557	19,978	1,531	5,160	74	801
1995	430	4,177	334	1,512	18,438	1,577	961	32	731
1996	447	4,396	355	1,584	17,600	1,539	7,444	64	784
1997	468	4,627	374	1,572	14,414	1,702	2,793	37	766
1998	418	4,086	324	1,441	8,145	1,488	1,494	52	696
1999	445	3,688	365	1,575	8,738	1,612	822	56	746
2000	446	3,777	378	1,602	8,455	1,344	1,022	83	777
2001	452	2,730	282	1,619	4,535	1,797	844	66	755
2002	474	3,146	309	1,637	2,642	2,258	2,414	46	755
2003	462	3,467	206	1,570	2,781	1,900	1,531	69	751
2004	474	3,382	169	1,623	2,679	2,225	1,375	118	820
2005	444	3,586	169	1,573	2,597	2,104	1,932	94	759
2006	429	3,343	157	1,610	3,152	1,645	1,595	89	734
2007	447	3,142	290	1,543	3,696	2,138	10,372	72	741
2008	413	2,750	447	1,563	3,668	1,663	4,913	46	681
2009	378	2,792	568	1,443	3,669	2,588	2,715	41	664
2010	346	2,425	#DIV/0!	1,492	3,342	2,148	2,286	37	620
5 Yr. Avg.	422	3,123	326	1,546	3,356	2,028	4,306	68	716
10 Yr. Avg.	442	3,211	297	1,578	3,787	1,966	2,871	72	744

Five year average is from years 2005 through 2009.

Ten year average is from years 2000 through 2009.

California Water Service Company - King City District

Worksheet 7

Water Supply and Demand Analysis and Projections

Percentage Change in Annual Demand

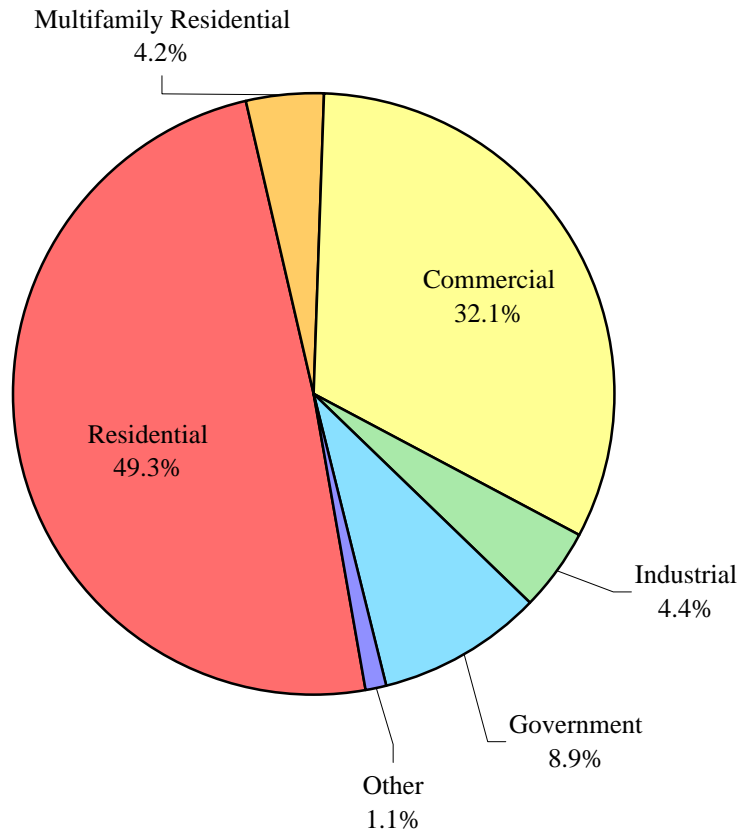
Year	Multi-Residential						Unaccounted Water	Total
	Residential	Residential	Commercial	Industrial	Government	Other		
1981	3.83%	2.89%	-1.58%	6.91%	-13.88%	203.00%	-5.71%	0.86%
1982	-6.11%	11.37%	0.94%	7.89%	-3.26%	-53.14%	16.33%	-0.20%
1983	3.07%	1.09%	1.15%	-24.41%	4.05%	-44.37%	28.51%	0.82%
1984	15.57%	2.25%	15.86%	30.69%	28.56%	1051.90%	49.71%	20.91%
1985	-2.17%	-1.82%	-4.14%	-15.26%	-1.39%	-41.43%	-14.11%	-5.65%
1986	0.98%	6.19%	2.88%	-17.02%	-11.67%	167.54%	-11.62%	-1.83%
1987	4.22%	24.06%	4.40%	16.51%	-2.58%	-54.00%	93.05%	14.16%
1988	4.52%	12.62%	0.80%	16.74%	1.47%	-44.36%	-60.31%	-6.62%
1989	-1.51%	-9.83%	2.89%	14.30%	47.14%	406.58%	-3.36%	3.30%
1990	2.25%	17.00%	8.47%	17.54%	-20.40%	157.33%	17.03%	6.62%
1991	-4.52%	-8.89%	-6.01%	71.19%	-5.71%	12.97%	-29.25%	2.50%
1992	12.17%	-1.00%	-3.77%	-55.50%	0.00%	-95.20%	66.98%	-5.61%
1993	4.13%	10.45%	1.43%	24.23%	4.65%	2753.88%	39.69%	9.70%
1994	4.03%	1.60%	-2.51%	-2.50%	-0.84%	-31.62%	-21.89%	-2.20%
1995	6.82%	-8.30%	-3.95%	-7.71%	2.99%	-72.06%	-54.26%	-4.64%
1996	7.69%	5.24%	5.10%	-4.54%	0.35%	416.28%	105.84%	10.44%
1997	9.51%	5.27%	0.34%	2.37%	10.55%	-24.94%	-39.53%	1.85%
1998	-8.86%	-11.69%	-7.96%	-20.89%	-7.81%	-33.14%	43.06%	-7.39%
1999	10.01%	12.82%	8.10%	22.61%	11.12%	-67.00%	10.75%	10.25%
2000	0.57%	12.66%	5.82%	-3.24%	-8.30%	107.32%	48.60%	5.37%
2001	1.40%	-14.59%	8.63%	-46.36%	48.92%	-33.96%	-19.24%	-1.54%
2002	6.14%	6.36%	0.73%	-34.46%	25.61%	186.04%	-29.56%	1.02%
2003	-1.62%	10.21%	-4.10%	11.11%	-19.30%	-52.43%	50.87%	0.01%
2004	2.93%	-2.46%	3.41%	-3.68%	14.66%	19.72%	71.03%	9.67%
2005	-5.00%	-2.79%	-2.75%	-8.17%	-11.60%	75.70%	-19.20%	-6.60%
2006	0.68%	-6.79%	3.70%	21.39%	-21.83%	-0.93%	-2.58%	0.31%
2007	8.41%	-6.00%	-1.36%	17.27%	29.97%	225.12%	-16.31%	4.69%
2008	-7.48%	51.17%	0.01%	-0.78%	-11.34%	-36.84%	-35.73%	-7.49%
2009	-8.31%	28.26%	-7.66%	5.58%	90.48%	-17.11%	-10.39%	-1.78%
2010	-6.94%	-9.54%	3.37%	-8.89%	-16.98%	-1.77%	-8.29%	-5.26%
5 Yr. Avg.	-2.34%	12.77%	-1.61%	7.06%	15.14%	49.19%	-16.84%	-2.17%
10 Yr. Avg.	-0.23%	7.60%	0.64%	-4.13%	13.73%	47.26%	3.75%	0.37%

Five year average is from years 2005 through 2009

Ten year average is from years 2000 through 2009.

King City District

Percent of Sales by Type of Use (2010)



California Water Service Company - King City District
Water Supply and Demand Analysis and Projections
Percentage of Total Sales

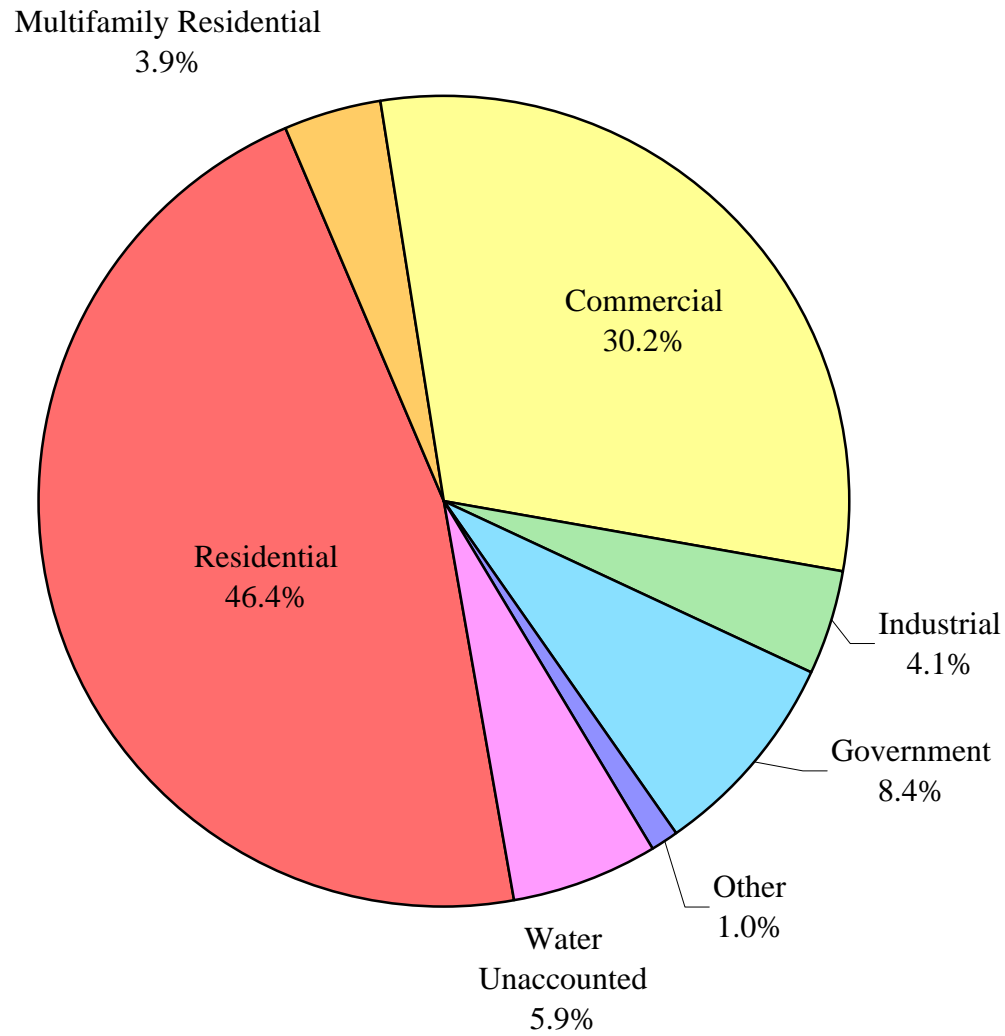
Year	Multi-						Percent Total
	Residential	Residential	Commercial	Industrial	Government	Other	
1980	44.42%	2.04%	36.18%	12.19%	5.16%	0.02%	100.00%
1981	45.50%	2.07%	35.13%	12.85%	4.39%	0.06%	100.00%
1982	43.32%	2.33%	35.96%	14.06%	4.30%	0.03%	100.00%
1983	45.33%	2.40%	36.92%	10.79%	4.55%	0.02%	100.00%
1984	44.49%	2.08%	36.33%	11.98%	4.96%	0.17%	100.00%
1985	45.56%	2.14%	36.46%	10.62%	5.12%	0.10%	100.00%
1986	46.28%	2.29%	37.74%	8.87%	4.55%	0.27%	100.00%
1987	45.78%	2.69%	37.39%	9.81%	4.21%	0.12%	100.00%
1988	45.85%	2.90%	36.12%	10.97%	4.09%	0.06%	100.00%
1989	43.50%	2.52%	35.79%	12.08%	5.80%	0.31%	100.00%
1990	42.01%	2.79%	36.67%	13.41%	4.36%	0.76%	100.00%
1991	38.19%	2.42%	32.81%	21.86%	3.91%	0.81%	100.00%
1992	47.34%	2.65%	34.90%	10.75%	4.33%	0.04%	100.00%
1993	46.19%	2.74%	33.17%	12.51%	4.24%	1.15%	100.00%
1994	47.88%	2.77%	32.22%	12.16%	4.19%	0.78%	100.00%
1995	50.95%	2.53%	30.83%	11.18%	4.30%	0.22%	100.00%
1996	51.74%	2.51%	30.55%	10.06%	4.07%	1.06%	100.00%
1997	53.68%	2.51%	29.04%	9.76%	4.26%	0.76%	100.00%
1998	54.35%	2.46%	29.69%	8.57%	4.36%	0.56%	100.00%
1999	54.25%	2.52%	29.13%	9.54%	4.40%	0.17%	100.00%
2000	53.58%	2.78%	30.27%	9.06%	3.96%	0.34%	100.00%
2001	54.02%	2.36%	32.69%	4.83%	5.87%	0.22%	100.00%
2002	55.15%	2.42%	31.68%	3.05%	7.09%	0.62%	100.00%
2003	56.11%	2.76%	31.41%	3.50%	5.92%	0.30%	100.00%
2004	55.83%	2.60%	31.40%	3.26%	6.56%	0.35%	100.00%
2005	55.53%	2.65%	31.97%	3.13%	6.07%	0.65%	100.00%
2006	55.51%	2.45%	32.92%	3.78%	4.71%	0.64%	100.00%
2007	55.94%	2.14%	30.18%	4.12%	5.69%	1.93%	100.00%
2008	54.18%	3.39%	31.60%	4.28%	5.28%	1.27%	100.00%
2009	50.26%	4.39%	29.53%	4.57%	10.18%	1.07%	100.00%
2010	49.27%	4.19%	32.15%	4.39%	8.90%	1.11%	100.00%
5 Yr. Avg.	54.28%	3.00%	31.24%	3.98%	6.39%	1.11%	100.00%
10 Yr. Avg.	54.61%	2.79%	31.36%	4.36%	6.13%	0.74%	100.00%

Five year average is from years 2005 through 2009.

Ten year average is from years 2000 through 2009.

King City District

Percent of Total Demand by Type of Use (2010)



California Water Service Company - King City District
Water Supply and Demand Analysis and Projections
Percentage of Total Demand

Year	Multifamily		Commercial	Industrial	Government	Other	Unaccounted Water	Percent Total
	Residential	Residential						
1980	41.25%	1.89%	33.60%	11.32%	4.79%	0.02%	7.12%	100.00%
1981	42.47%	1.93%	32.79%	12.00%	4.09%	0.06%	6.66%	100.00%
1982	39.96%	2.15%	33.16%	12.97%	3.97%	0.03%	7.76%	100.00%
1983	40.84%	2.16%	33.27%	9.72%	4.10%	0.02%	9.89%	100.00%
1984	39.04%	1.83%	31.88%	10.51%	4.35%	0.15%	12.25%	100.00%
1985	40.48%	1.90%	32.39%	9.44%	4.55%	0.09%	11.15%	100.00%
1986	41.64%	2.06%	33.95%	7.98%	4.09%	0.25%	10.04%	100.00%
1987	38.01%	2.23%	31.04%	8.14%	3.49%	0.10%	16.97%	100.00%
1988	42.55%	2.69%	33.51%	10.18%	3.80%	0.06%	7.21%	100.00%
1989	40.56%	2.35%	33.38%	11.26%	5.41%	0.29%	6.75%	100.00%
1990	38.90%	2.58%	33.96%	12.42%	4.04%	0.70%	7.41%	100.00%
1991	36.23%	2.29%	31.14%	20.74%	3.71%	0.77%	5.11%	100.00%
1992	43.06%	2.41%	31.74%	9.78%	3.93%	0.04%	9.04%	100.00%
1993	40.87%	2.42%	29.35%	11.07%	3.75%	1.02%	11.51%	100.00%
1994	43.48%	2.52%	29.25%	11.04%	3.81%	0.71%	9.20%	100.00%
1995	48.70%	2.42%	29.47%	10.68%	4.11%	0.21%	4.41%	100.00%
1996	47.49%	2.31%	28.04%	9.23%	3.73%	0.98%	8.22%	100.00%
1997	51.06%	2.38%	27.62%	9.28%	4.05%	0.72%	4.88%	100.00%
1998	50.25%	2.27%	27.45%	7.93%	4.04%	0.52%	7.54%	100.00%
1999	50.14%	2.33%	26.92%	8.82%	4.07%	0.16%	7.57%	100.00%
2000	47.86%	2.49%	27.03%	8.10%	3.54%	0.31%	10.68%	100.00%
2001	49.28%	2.16%	29.83%	4.41%	5.35%	0.21%	8.76%	100.00%
2002	51.78%	2.27%	29.74%	2.86%	6.66%	0.58%	6.11%	100.00%
2003	50.93%	2.50%	28.52%	3.18%	5.37%	0.28%	9.22%	100.00%
2004	47.80%	2.23%	26.89%	2.79%	5.62%	0.30%	14.37%	100.00%
2005	48.62%	2.32%	28.00%	2.75%	5.31%	0.57%	12.43%	100.00%
2006	48.80%	2.15%	28.94%	3.32%	4.14%	0.56%	12.08%	100.00%
2007	50.54%	1.93%	27.27%	3.72%	5.14%	1.74%	9.65%	100.00%
2008	50.54%	3.16%	29.48%	3.99%	4.93%	1.19%	6.71%	100.00%
2009	47.18%	4.13%	27.72%	4.29%	9.56%	1.00%	6.12%	100.00%
2010	46.35%	3.94%	30.24%	4.13%	8.38%	1.04%	5.92%	100.00%
5 Yr. Avg.	49.14%	2.74%	28.28%	3.61%	5.82%	1.01%	9.40%	100.00%
10 Yr. Avg.	49.34%	2.53%	28.34%	3.94%	5.56%	0.67%	9.61%	100.00%

Five year average is from years 2005 through 2009.

Ten year average is from years 2000 through 2009.

California Water Service Company - King City District
Water Supply and Demand Analysis and Projections

Scenario #1: Based on Maintaining Growth at the 5-Year 10-Year 20-Year Average Annual Growth Low Average High Demand per Service for each Customer Class.

Summary of Historical Growth Rate from Worksheet 2			
Customer Type	5 Yr. Avg. Historical Growth Rate	Individual Growth Rate Selected	Notes
Single Family Residential	1.974%	1.974%	Historical growth rate used
Multi Family Residential	18.144%	1.958%	Overall growth rate used
Commercial	0.662%	0.662%	Historical growth rate used
Industrial	0.060%	0.060%	Historical growth rate used
Government	5.976%	1.958%	Overall growth rate used
Other	15.666%	1.958%	Overall growth rate used
Overall	1.958%	1.729%	

Summary of Lowest Demand per Service from Worksheets 5 and 6									
Demand/Serv. Units	Multi-Residential			Commercial	Industrial	Government	Total Other	Unaccounted Total Serv.	Combined Demand/Serv.
	Residential	(service)	(unit)						
Gal/Service/Yr	138,086	1,019,159	#DIV/0!	526,744	1,339,013	490,620	29,548	14,829	242,300
AF/Service/Yr	0.424	3.128	#DIV/0!	1.617	4.109	1.506	0.091	0.046	0.744
Gal/Service/Day	378	2,792	#DIV/0!	1,443	3,669	1,344	81	41	664

California Water Service Company - King City District

Water Supply and Demand Analysis and Projections

Worksheet 10

30-year projection Summary

Scenario #1: Based on Maintaining Growth at the 5-Year 10-Year 20-Year Average Annual Growth Low Average High Demand per Service for each Customer Class.

Customer Type	Projected Services 2010	Projected Services 2015	Projected Services 2020	Projected Services 2025	Projected Services 2030	Projected Services 2035	Projected Services 2040	Services projected to be added from 2010 - 2040
Single Family Residential	2,066	2,278	2,512	2,770	3,054	3,368	3,714	1,648
Multi Family Residential	24	27	30	33	36	40	44	19
Commercial	314	325	335	347	358	370	383	69
Industrial	19	19	19	19	19	19	19	0
Government	60	61	62	63	63	64	65	5
Other	6	7	7	8	9	10	11	5
Total	2,490	2,717	2,965	3,240	3,540	3,872	4,235	1,746

Customer Type	Projected Demand 2010 (ccf)	Projected Demand 2015 (ccf)	Projected Demand 2020 (ccf)	Projected Demand 2025 (ccf)	Projected Demand 2030 (ccf)	Projected Demand 2035 (ccf)	Projected Demand 2040 (ccf)	Projected demand to be added from 2010 - 2040 (ccf)
Single Family Residential	381,369	420,526	463,703	511,313	563,812	621,701	685,534	304,165
Multi Family Residential	33,338	36,732	40,472	44,592	49,132	54,134	59,646	26,308
Commercial	221,149	228,567	236,233	244,157	252,346	260,810	269,558	48,409
Industrial	34,030	34,132	34,235	34,338	34,441	34,544	34,648	618
Government	39,375	40,243	40,364	41,253	41,377	42,288	42,415	3,040
Other	242	266	293	323	356	392	432	191
Unaccounted	49,355	53,859	58,784	64,223	70,179	76,754	83,961	34,605
Total	758,859	814,325	874,084	940,200	1,011,644	1,090,625	1,176,194	417,335

Customer Type	Projected Demand 2010 (AF)	Projected Demand 2015 (AF)	Projected Demand 2020 (AF)	Projected Demand 2025 (AF)	Projected Demand 2030 (AF)	Projected Demand 2035 (AF)	Projected Demand 2040 (AF)	Projected demand to be added from 2010 - 2040 (AF)
Single Family Residential	876	965	1,065	1,174	1,294	1,427	1,574	698
Multi Family Residential	77	84	93	102	113	124	137	60
Commercial	508	525	542	561	579	599	619	111
Industrial	78	78	79	79	79	79	80	1
Government	90	92	93	95	95	97	97	7
Other	1	1	1	1	1	1	1	0
Unaccounted	113	124	135	147	161	176	193	79
Total	1,742	1,869	2,007	2,158	2,322	2,504	2,700	958

California Water Service Company - King City District

Water Supply and Demand Analysis and Projections

Worksheet 10

2000's Projections

Scenario #1: Based on Maintaining Growth at the 5-Year 10-Year 20-Year Average Annual Growth Low Average High Demand per Service for each Customer Class.

Customer Type	Actual Services 2001	Actual Services 2002	Actual Services 2003	Actual Services 2004	Actual Services 2005	Actual Services 2006	Actual Services 2007	Actual Services 2008	Actual Services 2009	Projected Services 2010
Residential	1,795	1,817	1,831	1,839	1,863	1,943	2,023	2,026	2,026	2,066
Multi-Residential	13	12	12	12	11	11	11	19	24	24
Commercial	303	302	302	302	303	307	316	312	312	314
Industrial	16	18	19	19	18	18	18	18	19	19
Government	49	49	47	46	43	43	43	49	60	60
Other	4	4	3	4	5	6	3	4	6	6
Total	2,180	2,202	2,214	2,222	2,243	2,328	2,414	2,428	2,447	2,490

Customer Type	Demand 2001(ccf)	Demand 2002(ccf)	Demand 2003(ccf)	Demand 2004(ccf)	Demand 2005(ccf)	Demand 2006(ccf)	Demand 2007(ccf)	Demand 2008(ccf)	Demand 2009(ccf)	Demand 2010(ccf)
Residential	331,345	335,406	337,991	339,467	343,898	358,665	373,433	373,986	373,986	381,369
Multi-Residential	17,711	16,349	16,349	16,349	14,987	14,987	14,987	25,886	32,698	33,338
Commercial	213,358	212,654	212,654	212,654	213,358	216,174	222,512	219,695	219,695	221,149
Industrial	28,640	32,220	34,010	34,010	32,220	32,220	32,220	32,220	34,010	34,030
Government	32,137	32,137	30,825	30,170	28,202	28,202	28,202	32,137	39,352	39,375
Other	158	158	118	158	197	237	118	158	237	242
Unaccounted	43,216	43,652	43,890	44,049	44,465	46,150	47,855	48,132	48,509	49,355
Total	666,566	672,576	675,837	676,856	677,326	696,635	719,326	732,215	748,487	758,859

Customer Type	Demand 2001(AF)	Demand 2002(AF)	Demand 2003(AF)	Demand 2004(AF)	Demand 2005(AF)	Demand 2006(AF)	Demand 2007(AF)	Demand 2008(AF)	Demand 2009(AF)	Demand 2010(AF)
Residential	761	770	776	779	789	823	857	859	859	876
Multi-Residential	41	38	38	38	34	34	34	59	75	77
Commercial	490	488	488	488	490	496	511	504	504	508
Industrial	66	74	78	78	74	74	74	74	78	78
Government	74	74	71	69	65	65	65	74	90	90
Other	0	0	0	0	0	1	0	0	1	1
Unaccounted	99	100	101	101	102	106	110	110	111	113
Total	1,530	1,544	1,552	1,554	1,555	1,599	1,651	1,681	1,718	1,742

California Water Service Company - King City District

Water Supply and Demand Analysis and Projections

2010's Projections

Scenario #1: Based on Maintaining Growth at the 5-Year 10-Year 20-Year Average Annual Growth Low Average High Demand per Service for each Customer Class.

Customer Type	Projected Services 2011	Projected Services 2012	Projected Services 2013	Projected Services 2014	Projected Services 2015	Projected Services 2016	Projected Services 2017	Projected Services 2018	Projected Services 2019	Projected Services 2020
Residential	2,107	2,148	2,191	2,234	2,278	2,323	2,369	2,416	2,463	2,512
Multi-Residential	25	25	26	26	27	27	28	29	29	30
Commercial	316	318	320	322	325	327	329	331	333	335
Industrial	19	19	19	19	19	19	19	19	19	19
Government	61	61	61	61	61	61	61	61	62	62
Other	6	6	6	7	7	7	7	7	7	7
Total	2,534	2,579	2,624	2,670	2,717	2,765	2,813	2,863	2,914	2,965

Customer Type	Demand 2011(ccf)	Demand 2012(ccf)	Demand 2013(ccf)	Demand 2014(ccf)	Demand 2015(ccf)	Demand 2016(ccf)	Demand 2017(ccf)	Demand 2018(ccf)	Demand 2019(ccf)	Demand 2020(ccf)
Residential	388,897	396,574	404,402	412,385	420,526	428,827	437,292	445,924	454,727	463,703
Multi-Residential	33,991	34,656	35,335	36,027	36,732	37,451	38,185	38,932	39,695	40,472
Commercial	222,613	224,087	225,571	227,064	228,567	230,080	231,603	233,137	234,680	236,233
Industrial	34,051	34,071	34,092	34,112	34,132	34,153	34,173	34,194	34,214	34,235
Government	40,146	40,170	40,194	40,219	40,243	40,267	40,291	40,315	40,339	40,364
Other	246	251	256	261	266	271	277	282	288	293
Unaccounted	50,241	51,120	52,015	52,928	53,859	54,807	55,773	56,758	57,761	58,784
Total	770,185	780,930	791,865	802,996	814,325	825,856	837,594	849,542	861,704	874,084

Customer Type	Demand 2011(AF)	Demand 2012(AF)	Demand 2013(AF)	Demand 2014(AF)	Demand 2015(AF)	Demand 2016(AF)	Demand 2017(AF)	Demand 2018(AF)	Demand 2019(AF)	Demand 2020(AF)
Residential	893	910	928	947	965	984	1,004	1,024	1,044	1,065
Multi-Residential	78	80	81	83	84	86	88	89	91	93
Commercial	511	514	518	521	525	528	532	535	539	542
Industrial	78	78	78	78	78	78	78	78	79	79
Government	92	92	92	92	92	92	92	93	93	93
Other	1	1	1	1	1	1	1	1	1	1
Unaccounted	115	117	119	122	124	126	128	130	133	135
Total	1,768	1,793	1,818	1,843	1,869	1,896	1,923	1,950	1,978	2,007

California Water Service Company - King City District

Water Supply and Demand Analysis and Projections

2020's Projections

Scenario #1: Based on Maintaining Growth at the 5-Year 10-Year 20-Year Average Annual Growth Low Average High Demand per Service for each Customer Class.

Customer Type	Projected Services 2021	Projected Services 2022	Projected Services 2023	Projected Services 2024	Projected Services 2025	Projected Services 2026	Projected Services 2027	Projected Services 2028	Projected Services 2029	Projected Services 2030
Residential	2,562	2,612	2,664	2,716	2,770	2,825	2,880	2,937	2,995	3,054
Multi-Residential	30	31	31	32	33	33	34	35	35	36
Commercial	338	340	342	344	347	349	351	354	356	358
Industrial	19	19	19	19	19	19	19	19	19	19
Government	63	63	63	63	63	63	63	63	63	63
Other	8	8	8	8	8	8	9	9	9	9
Total	3,019	3,073	3,127	3,183	3,240	3,298	3,356	3,417	3,478	3,540

Customer Type	Demand 2021(ccf)	Demand 2022(ccf)	Demand 2023(ccf)	Demand 2024(ccf)	Demand 2025(ccf)	Demand 2026(ccf)	Demand 2027(ccf)	Demand 2028(ccf)	Demand 2029(ccf)	Demand 2030(ccf)
Residential	472,856	482,191	491,709	501,415	511,313	521,407	531,699	542,195	552,898	563,812
Multi-Residential	41,264	42,072	42,896	43,736	44,592	45,465	46,356	47,263	48,189	49,132
Commercial	237,797	239,372	240,956	242,551	244,157	245,773	247,400	249,038	250,687	252,346
Industrial	34,256	34,276	34,297	34,317	34,338	34,358	34,379	34,400	34,420	34,441
Government	41,154	41,179	41,203	41,228	41,253	41,277	41,302	41,327	41,352	41,377
Other	299	305	311	317	323	330	336	343	349	356
Unaccounted	59,850	60,912	61,995	63,098	64,223	65,369	66,538	67,728	68,942	70,179
Total	887,476	900,306	913,367	926,663	940,200	953,980	968,010	982,294	996,837	1,011,644

Customer Type	Demand 2021(AF)	Demand 2022(AF)	Demand 2023(AF)	Demand 2024(AF)	Demand 2025(AF)	Demand 2026(AF)	Demand 2027(AF)	Demand 2028(AF)	Demand 2029(AF)	Demand 2030(AF)
Residential	1,086	1,107	1,129	1,151	1,174	1,197	1,221	1,245	1,269	1,294
Multi-Residential	95	97	98	100	102	104	106	109	111	113
Commercial	546	550	553	557	561	564	568	572	576	579
Industrial	79	79	79	79	79	79	79	79	79	79
Government	94	95	95	95	95	95	95	95	95	95
Other	1	1	1	1	1	1	1	1	1	1
Unaccounted	137	140	142	145	147	150	153	155	158	161
Total	2,037	2,067	2,097	2,127	2,158	2,190	2,222	2,255	2,288	2,322

California Water Service Company - King City District

Water Supply and Demand Analysis and Projections

2030's Projections

Scenario #1: Based on Maintaining Growth at the 5-Year 10-Year 20-Year Average Annual Growth Low Average High Demand per Service for each Customer Class.

Customer Type	Projected Services 2031	Projected Services 2032	Projected Services 2033	Projected Services 2034	Projected Services 2035	Projected Services 2036	Projected Services 2037	Projected Services 2038	Projected Services 2039	Projected Services 2040
Residential	3,115	3,176	3,239	3,303	3,368	3,434	3,502	3,571	3,642	3,714
Multi-Residential	37	37	38	39	40	41	41	42	43	44
Commercial	361	363	366	368	370	373	375	378	380	383
Industrial	19	19	19	19	19	19	19	19	19	19
Government	64	64	64	64	64	65	65	65	65	65
Other	9	9	10	10	10	10	10	11	11	11
Total	3,605	3,670	3,736	3,803	3,872	3,942	4,013	4,086	4,160	4,235

Customer Type	Demand 2031(ccf)	Demand 2032(ccf)	Demand 2033(ccf)	Demand 2034(ccf)	Demand 2035(ccf)	Demand 2036(ccf)	Demand 2037(ccf)	Demand 2038(ccf)	Demand 2039(ccf)	Demand 2040(ccf)
Residential	574,942	586,291	597,865	609,666	621,701	633,974	646,488	659,250	672,264	685,534
Multi-Residential	50,094	51,075	52,075	53,095	54,134	55,194	56,275	57,377	58,500	59,646
Commercial	254,017	255,698	257,391	259,095	260,810	262,537	264,275	266,024	267,785	269,558
Industrial	34,462	34,482	34,503	34,524	34,544	34,565	34,586	34,607	34,627	34,648
Government	42,187	42,212	42,237	42,263	42,288	42,313	42,339	42,364	42,390	42,415
Other	363	370	377	385	392	400	408	416	424	432
Unaccounted	71,464	72,749	74,058	75,393	76,754	78,141	79,554	80,995	82,464	83,961
Total	1,027,528	1,042,878	1,058,507	1,074,421	1,090,625	1,107,124	1,123,925	1,141,033	1,158,454	1,176,194

Customer Type	Demand 2031(AF)	Demand 2032(AF)	Demand 2033(AF)	Demand 2034(AF)	Demand 2035(AF)	Demand 2036(AF)	Demand 2037(AF)	Demand 2038(AF)	Demand 2039(AF)	Demand 2040(AF)
Residential	1,320	1,346	1,373	1,400	1,427	1,455	1,484	1,513	1,543	1,574
Multi-Residential	115	117	120	122	124	127	129	132	134	137
Commercial	583	587	591	595	599	603	607	611	615	619
Industrial	79	79	79	79	79	79	79	79	79	80
Government	97	97	97	97	97	97	97	97	97	97
Other	1	1	1	1	1	1	1	1	1	1
Unaccounted	164	167	170	173	176	179	183	186	189	193
Total	2,359	2,394	2,430	2,467	2,504	2,542	2,580	2,619	2,659	2,700

California Water Service Company - King City District
Water Supply and Demand Analysis and Projections

Scenario #2: Based on Maintaining Growth at the 5-Year 10-Year 20-Year Average Annual Growth Low Average High Demand per Service for each Customer Class.

Summary of Historical Growth Rate from Worksheet 2			
Customer Type	5 Yr. Avg. Historical Growth Rate	Individual Growth Rate Selected	Notes
Single Family Residential	1.974%	1.974%	Historical growth rate used
Multi Family Residential	18.144%	1.958%	Overall growth rate used
Commercial	0.662%	0.662%	Historical growth rate used
Industrial	0.060%	0.060%	Historical growth rate used
Government	5.976%	1.958%	Overall growth rate used
Other	15.666%	1.958%	Overall growth rate used
Overall	1.958%	1.729%	

Summary of Average Demand per Service from Worksheets 5 and 6									
Demand/Serv. Units	Multi-Residential			Commercial	Industrial	Government	Total Other	Unaccounted Total Serv.	Combined Demand/Serv.
	Residential	(service)	(unit)						
Gal/Service/Yr	162,865	1,045,029	84,447	548,137	7,528,994	528,549	898,673	29,164	294,867
AF/Service/Yr	0.500	3.207	0.259	1.682	23.106	1.622	2.758	0.090	0.905
Gal/Service/Day	446	2,863	231	1,502	20,627	1,448	2,462	80	808

California Water Service Company - King City District

Worksheet 11

Water Supply and Demand Analysis and Projections

30-year projection Summary

Scenario #2: Based on Maintaining Growth at the 5-Year 10-Year 20-Year Average Annual Growth Average Low High Demand per Service for each Customer Class.

Customer Type	Projected Services 2010	Projected Services 2015	Projected Services 2020	Projected Services 2025	Projected Services 2030	Projected Services 2035	Projected Services 2040	Services projected to be added from 2010 - 2040
Single Family Residential	2,066	2,278	2,512	2,770	3,054	3,368	3,714	1,648
Multi Family Residential	24	27	30	33	36	40	44	19
Commercial	314	325	335	347	358	370	383	69
Industrial	19	19	19	19	19	19	19	0
Government	60	61	62	63	63	64	65	5
Other	6	7	7	8	9	10	11	5
Total	2,490	2,717	2,965	3,240	3,540	3,872	4,235	1,746

Customer Type	Projected Demand 2010 (ccf)	Projected Demand 2015 (ccf)	Projected Demand 2020 (ccf)	Projected Demand 2025 (ccf)	Projected Demand 2030 (ccf)	Projected Demand 2035 (ccf)	Projected Demand 2040 (ccf)	Projected demand to be added from 2010 - 2040 (ccf)
Single Family Residential	422,378	465,745	513,566	566,296	624,440	688,553	759,250	336,872
Multi Family Residential	34,184	37,665	41,499	45,724	50,379	55,509	61,160	26,976
Commercial	230,132	237,850	245,828	254,074	262,595	271,403	280,506	50,375
Industrial	191,345	191,920	192,496	193,075	193,654	194,236	194,820	3,474
Government	42,419	43,354	43,484	44,442	44,575	45,557	45,694	3,275
Other	7,349	8,097	8,922	9,830	10,831	11,934	13,149	5,799
Unaccounted	97,065	105,921	115,607	126,304	138,017	150,948	165,120	68,056
Total	1,024,872	1,090,552	1,161,402	1,239,744	1,324,492	1,418,140	1,519,699	494,827

Customer Type	Projected Demand 2010 (AF)	Projected Demand 2015 (AF)	Projected Demand 2020 (AF)	Projected Demand 2025 (AF)	Projected Demand 2030 (AF)	Projected Demand 2035 (AF)	Projected Demand 2040 (AF)	Projected demand to be added from 2010 - 2040 (AF)
Single Family Residential	970	1,069	1,179	1,300	1,434	1,581	1,743	773
Multi Family Residential	78	86	95	105	116	127	140	62
Commercial	528	546	564	583	603	623	644	116
Industrial	439	441	442	443	445	446	447	8
Government	97	100	100	102	102	105	105	8
Other	17	19	20	23	25	27	30	13
Unaccounted	223	243	265	290	317	347	379	156
Total	2,353	2,504	2,666	2,846	3,041	3,256	3,489	1,136

California Water Service Company - King City District

Water Supply and Demand Analysis and Projections

2000's Projections

Scenario #2: Based on Maintaining Growth at the 5-Year 10-Year 20-Year Average Annual Growth Low Average High Demand per Service for each Customer Class.

Customer Type	Actual Services 2001	Actual Services 2002	Actual Services 2003	Actual Services 2004	Actual Services 2005	Actual Services 2006	Actual Services 2007	Actual Services 2008	Actual Services 2009	Projected Services 2010
Residential	1,795	1,817	1,831	1,839	1,863	1,943	2,023	2,026	2,026	2,066
Multi-Residential	13	12	12	12	11	11	11	19	24	24
Commercial	303	302	302	302	303	307	316	312	312	314
Industrial	16	18	19	19	18	18	18	18	19	19
Government	49	49	47	46	43	43	43	49	60	60
Other	4	4	3	4	5	6	3	4	6	6
Total	2,180	2,202	2,214	2,222	2,243	2,328	2,414	2,428	2,447	2,490

Customer Type	Demand 2001(ccf)	Demand 2002(ccf)	Demand 2003(ccf)	Demand 2004(ccf)	Demand 2005(ccf)	Demand 2006(ccf)	Demand 2007(ccf)	Demand 2008(ccf)	Demand 2009(ccf)	Demand 2010(ccf)
Residential	366,975	371,473	374,335	375,971	380,877	397,233	413,588	414,202	414,202	422,378
Multi-Residential	18,161	16,764	16,764	16,764	15,367	15,367	15,367	26,543	33,528	34,184
Commercial	222,023	221,291	221,291	221,291	222,023	224,954	231,549	228,618	228,618	230,132
Industrial	161,036	181,166	191,230	191,230	181,166	181,166	181,166	181,166	191,230	191,345
Government	34,622	34,622	33,208	32,502	30,382	30,382	30,382	34,622	42,394	42,419
Other	4,805	4,805	3,604	4,805	6,007	7,208	3,604	4,805	7,208	7,349
Unaccounted	84,991	85,848	86,316	86,628	87,447	90,761	94,114	94,659	95,400	97,065
Total	892,613	915,969	926,749	929,191	923,269	947,071	969,770	984,615	1,012,580	1,024,872

Customer Type	Demand 2001(AF)	Demand 2002(AF)	Demand 2003(AF)	Demand 2004(AF)	Demand 2005(AF)	Demand 2006(AF)	Demand 2007(AF)	Demand 2008(AF)	Demand 2009(AF)	Demand 2010(AF)
Residential	842	853	859	863	874	912	949	951	951	970
Multi-Residential	42	38	38	38	35	35	35	61	77	78
Commercial	510	508	508	508	510	516	532	525	525	528
Industrial	370	416	439	439	416	416	416	416	439	439
Government	79	79	76	75	70	70	70	79	97	97
Other	11	11	8	11	14	17	8	11	17	17
Unaccounted	195	197	198	199	201	208	216	217	219	223
Total	2,049	2,103	2,128	2,133	2,120	2,174	2,226	2,260	2,325	2,353

California Water Service Company - King City District

Water Supply and Demand Analysis and Projections

2010's Projections

Scenario #2: Based on Maintaining Growth at the 5-Year 10-Year 20-Year Average Annual Growth Low Average High Demand per Service for each Customer Class.

Customer Type	Projected Services 2011	Projected Services 2012	Projected Services 2013	Projected Services 2014	Projected Services 2015	Projected Services 2016	Projected Services 2017	Projected Services 2018	Projected Services 2019	Projected Services 2020
Residential	2,107	2,148	2,191	2,234	2,278	2,323	2,369	2,416	2,463	2,512
Multi-Residential	25	25	26	26	27	27	28	29	29	30
Commercial	316	318	320	322	325	327	329	331	333	335
Industrial	19	19	19	19	19	19	19	19	19	19
Government	61	61	61	61	61	61	61	61	62	62
Other	6	6	6	7	7	7	7	7	7	7
Total	2,534	2,579	2,624	2,670	2,717	2,765	2,813	2,863	2,914	2,965

Customer Type	Demand 2011(ccf)	Demand 2012(ccf)	Demand 2013(ccf)	Demand 2014(ccf)	Demand 2015(ccf)	Demand 2016(ccf)	Demand 2017(ccf)	Demand 2018(ccf)	Demand 2019(ccf)	Demand 2020(ccf)
Residential	430,716	439,218	447,888	456,730	465,745	474,939	484,315	493,875	503,624	513,566
Multi-Residential	34,854	35,536	36,232	36,941	37,665	38,402	39,154	39,921	40,702	41,499
Commercial	231,655	233,189	234,732	236,286	237,850	239,425	241,010	242,605	244,211	245,828
Industrial	191,460	191,575	191,690	191,805	191,920	192,035	192,150	192,266	192,381	192,496
Government	43,250	43,276	43,302	43,328	43,354	43,380	43,406	43,432	43,458	43,484
Other	7,493	7,640	7,789	7,942	8,097	8,256	8,418	8,582	8,750	8,922
Unaccounted	98,805	100,534	102,296	104,091	105,921	107,785	109,685	111,622	113,596	115,607
Total	1,038,233	1,050,967	1,063,929	1,077,122	1,090,552	1,104,222	1,118,138	1,132,303	1,146,723	1,161,402

Customer Type	Demand 2011(AF)	Demand 2012(AF)	Demand 2013(AF)	Demand 2014(AF)	Demand 2015(AF)	Demand 2016(AF)	Demand 2017(AF)	Demand 2018(AF)	Demand 2019(AF)	Demand 2020(AF)
Residential	989	1,008	1,028	1,049	1,069	1,090	1,112	1,134	1,156	1,179
Multi-Residential	80	82	83	85	86	88	90	92	93	95
Commercial	532	535	539	542	546	550	553	557	561	564
Industrial	440	440	440	440	441	441	441	441	442	442
Government	99	99	99	99	100	100	100	100	100	100
Other	17	18	18	18	19	19	19	20	20	20
Unaccounted	227	231	235	239	243	247	252	256	261	265
Total	2,383	2,413	2,442	2,473	2,504	2,535	2,567	2,599	2,633	2,666

California Water Service Company - King City District

Water Supply and Demand Analysis and Projections

2020's Projections

Scenario #2: Based on Maintaining Growth at the 5-Year 10-Year 20-Year Average Annual Growth Low Average High Demand per Service for each Customer Class.

Customer Type	Projected Services 2021	Projected Services 2022	Projected Services 2023	Projected Services 2024	Projected Services 2025	Projected Services 2026	Projected Services 2027	Projected Services 2028	Projected Services 2029	Projected Services 2030
Residential	2,562	2,612	2,664	2,716	2,770	2,825	2,880	2,937	2,995	3,054
Multi-Residential	30	31	31	32	33	33	34	35	35	36
Commercial	338	340	342	344	347	349	351	354	356	358
Industrial	19	19	19	19	19	19	19	19	19	19
Government	63	63	63	63	63	63	63	63	63	63
Other	8	8	8	8	8	8	9	9	9	9
Total	3,019	3,073	3,127	3,183	3,240	3,298	3,356	3,417	3,478	3,540

Customer Type	Demand 2021(ccf)	Demand 2022(ccf)	Demand 2023(ccf)	Demand 2024(ccf)	Demand 2025(ccf)	Demand 2026(ccf)	Demand 2027(ccf)	Demand 2028(ccf)	Demand 2029(ccf)	Demand 2030(ccf)
Residential	523,703	534,041	544,583	555,333	566,296	577,474	588,874	600,498	612,352	624,440
Multi-Residential	42,312	43,140	43,985	44,846	45,724	46,620	47,532	48,463	49,412	50,379
Commercial	247,456	249,094	250,743	252,403	254,074	255,755	257,449	259,153	260,868	262,595
Industrial	192,612	192,727	192,843	192,959	193,075	193,190	193,306	193,422	193,538	193,654
Government	44,335	44,362	44,389	44,415	44,442	44,469	44,495	44,522	44,549	44,575
Other	9,097	9,275	9,456	9,641	9,830	10,023	10,219	10,419	10,623	10,831
Unaccounted	117,703	119,792	121,922	124,092	126,304	128,558	130,856	133,198	135,585	138,017
Total	1,177,217	1,192,431	1,207,920	1,223,689	1,239,744	1,256,089	1,272,731	1,289,675	1,306,927	1,324,492

Customer Type	Demand 2021(AF)	Demand 2022(AF)	Demand 2023(AF)	Demand 2024(AF)	Demand 2025(AF)	Demand 2026(AF)	Demand 2027(AF)	Demand 2028(AF)	Demand 2029(AF)	Demand 2030(AF)
Residential	1,202	1,226	1,250	1,275	1,300	1,326	1,352	1,379	1,406	1,434
Multi-Residential	97	99	101	103	105	107	109	111	113	116
Commercial	568	572	576	579	583	587	591	595	599	603
Industrial	442	442	443	443	443	444	444	444	444	445
Government	102	102	102	102	102	102	102	102	102	102
Other	21	21	22	22	23	23	23	24	24	25
Unaccounted	270	275	280	285	290	295	300	306	311	317
Total	2,703	2,737	2,773	2,809	2,846	2,884	2,922	2,961	3,000	3,041

California Water Service Company - King City District

Water Supply and Demand Analysis and Projections

2030's Projections

Scenario #2: Based on Maintaining Growth at the 5-Year 10-Year 20-Year Average Annual Growth Low Average High Demand per Service for each Customer Class.

Customer Type	Projected Services 2031	Projected Services 2032	Projected Services 2033	Projected Services 2034	Projected Services 2035	Projected Services 2036	Projected Services 2037	Projected Services 2038	Projected Services 2039	Projected Services 2040
Residential	3,115	3,176	3,239	3,303	3,368	3,434	3,502	3,571	3,642	3,714
Multi-Residential	37	37	38	39	40	41	41	42	43	44
Commercial	361	363	366	368	370	373	375	378	380	383
Industrial	19	19	19	19	19	19	19	19	19	19
Government	64	64	64	64	64	65	65	65	65	65
Other	9	9	10	10	10	10	10	11	11	11
Total	3,605	3,670	3,736	3,803	3,872	3,942	4,013	4,086	4,160	4,235

Customer Type	Demand 2031(ccf)	Demand 2032(ccf)	Demand 2033(ccf)	Demand 2034(ccf)	Demand 2035(ccf)	Demand 2036(ccf)	Demand 2037(ccf)	Demand 2038(ccf)	Demand 2039(ccf)	Demand 2040(ccf)
Residential	636,766	649,336	662,154	675,225	688,553	702,146	716,006	730,140	744,553	759,250
Multi-Residential	51,366	52,372	53,397	54,443	55,509	56,595	57,704	58,833	59,985	61,160
Commercial	264,334	266,084	267,845	269,618	271,403	273,200	275,008	276,829	278,662	280,506
Industrial	193,771	193,887	194,003	194,120	194,236	194,353	194,469	194,586	194,703	194,820
Government	45,448	45,475	45,503	45,530	45,557	45,585	45,612	45,639	45,667	45,694
Other	11,043	11,259	11,480	11,704	11,934	12,167	12,406	12,648	12,896	13,149
Unaccounted	140,543	143,071	145,646	148,272	150,948	153,675	156,455	159,288	162,177	165,120
Total	1,343,271	1,361,483	1,380,028	1,398,911	1,418,140	1,437,720	1,457,660	1,477,964	1,498,642	1,519,699

Customer Type	Demand 2031(AF)	Demand 2032(AF)	Demand 2033(AF)	Demand 2034(AF)	Demand 2035(AF)	Demand 2036(AF)	Demand 2037(AF)	Demand 2038(AF)	Demand 2039(AF)	Demand 2040(AF)
Residential	1,462	1,491	1,520	1,550	1,581	1,612	1,644	1,676	1,709	1,743
Multi-Residential	118	120	123	125	127	130	132	135	138	140
Commercial	607	611	615	619	623	627	631	636	640	644
Industrial	445	445	445	446	446	446	446	447	447	447
Government	104	104	104	105	105	105	105	105	105	105
Other	25	26	26	27	27	28	28	29	30	30
Unaccounted	323	328	334	340	347	353	359	366	372	379
Total	3,084	3,126	3,168	3,211	3,256	3,301	3,346	3,393	3,440	3,489

**California Water Service Company - King City District
Water Supply and Demand Analysis and Projections**

Scenario #3: Based on Maintaining Growth at the 5-Year 10-Year 20-Year Average Annual Growth Low Average High Demand per Service for each Customer Class.

Summary of Historical Growth Rate from Worksheet 2			
Customer Type	5 Yr. Avg. Historical Growth Rate	Individual Growth Rate Selected	Notes
Single Family Residential	1.974%	1.974%	Historical growth rate used
Multi Family Residential	18.144%	1.958%	Overall growth rate used
Commercial	0.662%	0.662%	Historical growth rate used
Industrial	0.060%	0.060%	Historical growth rate used
Government	5.976%	1.958%	Overall growth rate used
Other	15.666%	1.958%	Overall growth rate used
Overall	1.958%	1.729%	

Summary of Maximum Demand per Service from Worksheets 5 and 6									
Demand/Serv. Units	Multi-Residential						Total Other	Unaccounted Total Serv.	Combined Demand/Serv.
	Residential	(service)	(unit)	Commercial	Industrial	Government			
Gal/Service/Yr	174,712	1,068,592	#DIV/0!	627,084	9,839,577	944,441	3,785,891	43,167	352,510
AF/Service/Yr	0.536	3.279	#DIV/0!	1.924	30.197	2.898	11.618	0.132	1.082
Gal/Service/Day	479	2,928	#DIV/0!	1,718	26,958	2,588	10,372	118	966

California Water Service Company - King City District

Water Supply and Demand Analysis and Projections

Worksheet 12

30-year projection Summary

Scenario #3: Based on Maintaining Growth at the 5-Year 10-Year 20-Year Average Annual Growth Low Average High Demand per Service for each Customer Class.

Customer Type	Projected Services 2010	Projected Services 2015	Projected Services 2020	Projected Services 2025	Projected Services 2030	Projected Services 2035	Projected Services 2040	Services projected to be added from 2010 - 2040
Single Family Residential	2,066	2,278	2,512	2,770	3,054	3,368	3,714	1,648
Multi Family Residential	24	27	30	33	36	40	44	19
Commercial	314	325	335	347	358	370	383	69
Industrial	19	19	19	19	19	19	19	0
Government	60	61	62	63	63	64	65	5
Other	6	7	7	8	9	10	11	5
Total	2,490	2,717	2,965	3,240	3,540	3,872	4,235	1,746

Customer Type	Projected Demand 2010 (ccf)	Projected Demand 2015 (ccf)	Projected Demand 2020 (ccf)	Projected Demand 2025 (ccf)	Projected Demand 2030 (ccf)	Projected Demand 2035 (ccf)	Projected Demand 2040 (ccf)	Projected demand to be added from 2010 - 2040 (ccf)
Single Family Residential	482,524	532,067	586,696	646,935	713,359	786,602	867,366	384,842
Multi Family Residential	34,955	38,514	42,435	46,755	51,515	56,760	62,539	27,584
Commercial	263,277	272,107	281,234	290,667	300,416	310,493	320,907	57,630
Industrial	250,067	250,818	251,572	252,327	253,085	253,845	254,608	4,541
Government	75,797	77,467	77,700	79,411	79,650	81,404	81,649	5,852
Other	30,960	34,113	37,585	41,412	45,628	50,274	55,392	24,431
Unaccounted	143,670	156,778	171,116	186,948	204,286	223,425	244,403	100,733
Total	1,281,251	1,361,864	1,448,338	1,544,457	1,647,940	1,762,803	1,886,864	605,613

Customer Type	Projected Demand 2010 (AF)	Projected Demand 2015 (AF)	Projected Demand 2020 (AF)	Projected Demand 2025 (AF)	Projected Demand 2030 (AF)	Projected Demand 2035 (AF)	Projected Demand 2040 (AF)	Projected demand to be added from 2010 - 2040 (AF)
Single Family Residential	1,108	1,221	1,347	1,485	1,638	1,806	1,991	883
Multi Family Residential	80	88	97	107	118	130	144	63
Commercial	604	625	646	667	690	713	737	132
Industrial	574	576	578	579	581	583	585	10
Government	174	178	178	182	183	187	187	13
Other	71	78	86	95	105	115	127	56
Unaccounted	330	360	393	429	469	513	561	231
Total	2,941	3,126	3,325	3,546	3,783	4,047	4,332	1,390

California Water Service Company - King City District
Water Supply and Demand Analysis and Projections

2000's Projections

Scenario #3: Based on Maintaining Growth at the 5-Year 10-Year 20-Year Average Annual Growth Low Average High Demand per Service for each Customer Class.

Customer Type	Actual Services 2001	Actual Services 2002	Actual Services 2003	Actual Services 2004	Actual Services 2005	Actual Services 2006	Actual Services 2007	Actual Services 2008	Actual Services 2009	Projected Services 2010
Residential	1,795	1,817	1,831	1,839	1,863	1,943	2,023	2,026	2,026	2,066
Multi-Residential	13	12	12	12	11	11	11	19	24	24
Commercial	303	302	302	302	303	307	316	312	312	314
Industrial	16	18	19	19	18	18	18	18	19	19
Government	49	49	47	46	43	43	43	49	60	60
Other	4	4	3	4	5	6	3	4	6	6
Total	2,180	2,202	2,214	2,222	2,243	2,328	2,414	2,428	2,447	2,490

Customer Type	Demand 2001(ccf)	Demand 2002(ccf)	Demand 2003(ccf)	Demand 2004(ccf)	Demand 2005(ccf)	Demand 2006(ccf)	Demand 2007(ccf)	Demand 2008(ccf)	Demand 2009(ccf)	Demand 2010(ccf)
Residential	419,232	424,370	427,640	429,508	435,114	453,798	472,483	473,183	473,183	482,524
Multi-Residential	18,570	17,142	17,142	17,142	15,713	15,713	15,713	27,141	34,284	34,955
Commercial	254,001	253,163	253,163	253,163	254,001	257,354	264,899	261,545	261,545	263,277
Industrial	210,457	236,764	249,917	249,917	236,764	236,764	236,764	236,764	249,917	250,067
Government	61,864	61,864	59,339	58,076	54,289	54,289	54,289	61,864	75,752	75,797
Other	20,244	20,244	15,183	20,244	25,305	30,366	15,183	20,244	30,366	30,960
Unaccounted	125,799	127,068	127,761	128,223	129,434	134,339	139,302	140,110	141,206	143,670
Total	1,110,167	1,140,615	1,150,144	1,156,273	1,150,620	1,182,623	1,198,632	1,220,852	1,266,254	1,281,251

Customer Type	Demand 2001(AF)	Demand 2002(AF)	Demand 2003(AF)	Demand 2004(AF)	Demand 2005(AF)	Demand 2006(AF)	Demand 2007(AF)	Demand 2008(AF)	Demand 2009(AF)	Demand 2010(AF)
Residential	962	974	982	986	999	1,042	1,085	1,086	1,086	1,108
Multi-Residential	43	39	39	39	36	36	36	62	79	80
Commercial	583	581	581	581	583	591	608	600	600	604
Industrial	483	544	574	574	544	544	544	544	574	574
Government	142	142	136	133	125	125	125	142	174	174
Other	46	46	35	46	58	70	35	46	70	71
Unaccounted	289	292	293	294	297	308	320	322	324	330
Total	2,549	2,619	2,640	2,654	2,641	2,715	2,752	2,803	2,907	2,941

California Water Service Company - King City District
Water Supply and Demand Analysis and Projections

Scenario #3: Based on Maintaining Growth at the

- 5-Year
- 10-Year
- 20-Year

Average Annual Growth

Low

Average

High

2010's Projections

Demand per Service for each Customer Class.

Customer Type	Projected Services 2011	Projected Services 2012	Projected Services 2013	Projected Services 2014	Projected Services 2015	Projected Services 2016	Projected Services 2017	Projected Services 2018	Projected Services 2019	Projected Services 2020
Residential	2,107	2,148	2,191	2,234	2,278	2,323	2,369	2,416	2,463	2,512
Multi-Residential	25	25	26	26	27	27	28	29	29	30
Commercial	316	318	320	322	325	327	329	331	333	335
Industrial	19	19	19	19	19	19	19	19	19	19
Government	61	61	61	61	61	61	61	61	62	62
Other	6	6	6	7	7	7	7	7	7	7
Total	2,534	2,579	2,624	2,670	2,717	2,765	2,813	2,863	2,914	2,965

Customer Type	Demand 2011(ccf)	Demand 2012(ccf)	Demand 2013(ccf)	Demand 2014(ccf)	Demand 2015(ccf)	Demand 2016(ccf)	Demand 2017(ccf)	Demand 2018(ccf)	Demand 2019(ccf)	Demand 2020(ccf)
Residential	492,049	501,762	511,667	521,767	532,067	542,570	553,280	564,202	575,339	586,696
Multi-Residential	35,640	36,337	37,049	37,774	38,514	39,268	40,037	40,821	41,620	42,435
Commercial	265,020	266,774	268,540	270,318	272,107	273,909	275,722	277,547	279,385	281,234
Industrial	250,217	250,367	250,518	250,668	250,818	250,969	251,120	251,270	251,421	251,572
Government	77,281	77,328	77,374	77,420	77,467	77,513	77,560	77,606	77,653	77,700
Other	31,567	32,185	32,815	33,457	34,113	34,780	35,461	36,156	36,864	37,585
Unaccounted	146,246	148,805	151,413	154,070	156,778	159,538	162,351	165,217	168,139	171,116
Total	1,298,020	1,313,558	1,329,375	1,345,475	1,361,864	1,378,547	1,395,531	1,412,820	1,430,420	1,448,338

Customer Type	Demand 2011(AF)	Demand 2012(AF)	Demand 2013(AF)	Demand 2014(AF)	Demand 2015(AF)	Demand 2016(AF)	Demand 2017(AF)	Demand 2018(AF)	Demand 2019(AF)	Demand 2020(AF)
Residential	1,130	1,152	1,175	1,198	1,221	1,246	1,270	1,295	1,321	1,347
Multi-Residential	82	83	85	87	88	90	92	94	96	97
Commercial	608	612	616	621	625	629	633	637	641	646
Industrial	574	575	575	575	576	576	576	577	577	578
Government	177	178	178	178	178	178	178	178	178	178
Other	72	74	75	77	78	80	81	83	85	86
Unaccounted	336	342	348	354	360	366	373	379	386	393
Total	2,980	3,016	3,052	3,089	3,126	3,165	3,204	3,243	3,284	3,325

California Water Service Company - King City District
Water Supply and Demand Analysis and Projections

2020's Projections

Scenario #3: Based on Maintaining Growth at the 5-Year 10-Year 20-Year Average Annual Growth Low Average High Demand per Service for each Customer Class.

Customer Type	Projected Services 2021	Projected Services 2022	Projected Services 2023	Projected Services 2024	Projected Services 2025	Projected Services 2026	Projected Services 2027	Projected Services 2028	Projected Services 2029	Projected Services 2030
Residential	2,562	2,612	2,664	2,716	2,770	2,825	2,880	2,937	2,995	3,054
Multi-Residential	30	31	31	32	33	33	34	35	35	36
Commercial	338	340	342	344	347	349	351	354	356	358
Industrial	19	19	19	19	19	19	19	19	19	19
Government	63	63	63	63	63	63	63	63	63	63
Other	8	8	8	8	8	8	9	9	9	9
Total	3,019	3,073	3,127	3,183	3,240	3,298	3,356	3,417	3,478	3,540

Customer Type	Demand 2021(ccf)	Demand 2022(ccf)	Demand 2023(ccf)	Demand 2024(ccf)	Demand 2025(ccf)	Demand 2026(ccf)	Demand 2027(ccf)	Demand 2028(ccf)	Demand 2029(ccf)	Demand 2030(ccf)
Residential	598,278	610,088	622,131	634,412	646,935	659,706	672,728	686,008	699,550	713,359
Multi-Residential	43,266	44,113	44,977	45,857	46,755	47,671	48,604	49,556	50,526	51,515
Commercial	283,096	284,970	286,857	288,756	290,667	292,591	294,528	296,478	298,441	300,416
Industrial	251,723	251,874	252,025	252,176	252,327	252,479	252,630	252,782	252,934	253,085
Government	79,221	79,268	79,316	79,364	79,411	79,459	79,507	79,554	79,602	79,650
Other	38,321	39,072	39,837	40,617	41,412	42,223	43,050	43,893	44,752	45,628
Unaccounted	174,218	177,310	180,462	183,675	186,948	190,285	193,686	197,152	200,685	204,286
Total	1,468,122	1,486,695	1,505,604	1,524,856	1,544,457	1,564,414	1,584,733	1,605,423	1,626,489	1,647,940

Customer Type	Demand 2021(AF)	Demand 2022(AF)	Demand 2023(AF)	Demand 2024(AF)	Demand 2025(AF)	Demand 2026(AF)	Demand 2027(AF)	Demand 2028(AF)	Demand 2029(AF)	Demand 2030(AF)
Residential	1,373	1,401	1,428	1,456	1,485	1,514	1,544	1,575	1,606	1,638
Multi-Residential	99	101	103	105	107	109	112	114	116	118
Commercial	650	654	659	663	667	672	676	681	685	690
Industrial	578	578	579	579	579	580	580	580	581	581
Government	182	182	182	182	182	182	183	183	183	183
Other	88	90	91	93	95	97	99	101	103	105
Unaccounted	400	407	414	422	429	437	445	453	461	469
Total	3,370	3,413	3,456	3,501	3,546	3,591	3,638	3,686	3,734	3,783

California Water Service Company - King City District

Water Supply and Demand Analysis and Projections

2030's Projections

Scenario #3: Based on Maintaining Growth at the 5-Year 10-Year 20-Year Average Annual Growth Low Average High Demand per Service for each Customer Class.

Customer Type	Projected Services 2,031	Projected Services 2,032	Projected Services 2,033	Projected Services 2,034	Projected Services 2,035	Projected Services 2,036	Projected Services 2,037	Projected Services 2,038	Projected Services 2,039	Projected Services 2,040
Residential	3,115	3,176	3,239	3,303	3,368	3,434	3,502	3,571	3,642	3,714
Multi-Residential	37	37	38	39	40	41	41	42	43	44
Commercial	361	363	366	368	370	373	375	378	380	383
Industrial	19	19	19	19	19	19	19	19	19	19
Government	64	64	64	64	64	65	65	65	65	65
Other	9	9	10	10	10	10	10	11	11	11
Total	3,605	3,670	3,736	3,803	3,872	3,942	4,013	4,086	4,160	4,235

Customer Type	Demand 2031(ccf)	Demand 2032(ccf)	Demand 2033(ccf)	Demand 2034(ccf)	Demand 2035(ccf)	Demand 2036(ccf)	Demand 2037(ccf)	Demand 2038(ccf)	Demand 2039(ccf)	Demand 2040(ccf)
Residential	727,440	741,800	756,443	771,375	786,602	802,130	817,964	834,111	850,576	867,366
Multi-Residential	52,524	53,553	54,601	55,670	56,760	57,872	59,005	60,160	61,338	62,539
Commercial	302,405	304,407	306,422	308,451	310,493	312,548	314,617	316,700	318,797	320,907
Industrial	253,237	253,389	253,541	253,693	253,845	253,998	254,150	254,303	254,455	254,608
Government	81,209	81,258	81,307	81,356	81,404	81,453	81,502	81,551	81,600	81,649
Other	46,522	47,432	48,361	49,308	50,274	51,258	52,262	53,285	54,328	55,392
Unaccounted	208,025	211,765	215,578	219,464	223,425	227,462	231,576	235,770	240,045	244,403
Total	1,671,363	1,693,605	1,716,254	1,739,317	1,762,803	1,786,720	1,811,076	1,835,880	1,861,139	1,886,864

Customer Type	Demand 2031(AF)	Demand 2032(AF)	Demand 2033(AF)	Demand 2034(AF)	Demand 2035(AF)	Demand 2036(AF)	Demand 2037(AF)	Demand 2038(AF)	Demand 2039(AF)	Demand 2040(AF)
Residential	1,670	1,703	1,737	1,771	1,806	1,841	1,878	1,915	1,953	1,991
Multi-Residential	121	123	125	128	130	133	135	138	141	144
Commercial	694	699	703	708	713	718	722	727	732	737
Industrial	581	582	582	582	583	583	583	584	584	585
Government	186	187	187	187	187	187	187	187	187	187
Other	107	109	111	113	115	118	120	122	125	127
Unaccounted	478	486	495	504	513	522	532	541	551	561
Total	3,837	3,888	3,940	3,993	4,047	4,102	4,158	4,215	4,273	4,332

California Water Service Company - King City District

Water Supply and Demand Analysis and Projections

Scenario #4: Based on Maintaining Growth at the 5-Year
 10-Year 20-Year Average Annual Growth with
Proposed Development

Summary of Historical Growth Rate from Worksheet 2			
Customer Type	20 Yr. Avg. Historical Growth Rate	Individual Growth Rate Selected	Notes
Single Family Residential	2.792%	2.792%	Historical growth rate used
Multi Family Residential	6.811%	6.811%	Historical growth rate used
Commercial	0.997%	0.997%	Historical growth rate used
Industrial	6.431%	6.431%	Historical growth rate used
Government	3.392%	3.392%	Historical growth rate used
Other	25.250%	2.568%	Overall growth rate used
Overall	2.568%	4.244%	

California Water Service Company - King City District
Water Supply and Demand Analysis and Projections

Worksheet 13

30-year projection Summary

Scenario #4: Based on Maintaining Growth at the 5-Year
 10-Year Average Annual Growth with
 20-Year Proposed Development

Customer Type	Projected Services 2010	Projected Services 2015	Projected Services 2020	Projected Services 2025	Projected Services 2030	Projected Services 2035	Projected Services 2040	Services projected to be added from 2010 - 2040
Single Family Residential	2,083	3,721	4,601	5,280	6,060	6,954	7,981	5,898
Multi Family Residential	26	36	50	69	96	133	185	159
Commercial	315	331	348	366	384	404	424	109
Industrial	20	28	38	52	70	96	131	111
Government	64	85	116	153	210	278	380	316
Other	6	7	9	10	12	14	16	10
Total	2,514	4,208	5,161	5,930	6,832	7,879	9,118	6,604

California Water Service Company - King City District

Water Supply and Demand Analysis and Projections

Worksheet 13

2000's Projections

Scenario #4: Based on Maintaining Growth at the 5-Year
 10-Year Average Annual Growth with
 20-Year Proposed Development

Customer Type	Actual Services 2001	Actual Services 2002	Actual Services 2003	Actual Services 2004	Actual Services 2005	Actual Services 2006	Actual Services 2007	Actual Services 2008	Actual Services 2009	Projected Services 2010
Residential	1,795	1,817	1,831	1,839	1,863	1,943	2,023	2,026	2,026	2,083
Multi-Residential	13	12	12	12	11	11	11	19	24	26
Commercial	303	302	302	302	303	307	316	312	312	315
Industrial	16	18	19	19	18	18	18	18	19	20
Government	49	49	47	46	43	43	43	49	60	64
Other	4	4	3	4	5	6	3	4	6	6
Total	2,180	2,202	2,214	2,222	2,243	2,328	2,414	2,428	2,447	2,514

2010's Projections

Customer Type	Projected Services 2011	Projected Services 2012	Projected Services 2013	Projected Services 2014	Projected Services 2015	Projected Services 2016	Projected Services 2017	Projected Services 2018	Projected Services 2019	Projected Services 2020
Residential	2,211	2,592	2,995	3,328	3,721	3,975	4,236	4,355	4,476	4,601
Multi-Residential	27	29	31	33	36	38	41	43	46	50
Commercial	318	321	325	328	331	334	338	341	345	348
Industrial	22	23	24	26	28	29	31	33	35	38
Government	66	70	75	80	85	90	96	102	109	116
Other	6	7	7	7	7	8	8	8	8	9
Total	2,650	3,043	3,457	3,802	4,208	4,475	4,750	4,883	5,019	5,161

California Water Service Company - King City District

Water Supply and Demand Analysis and Projections

Worksheet 13

2020's Projections

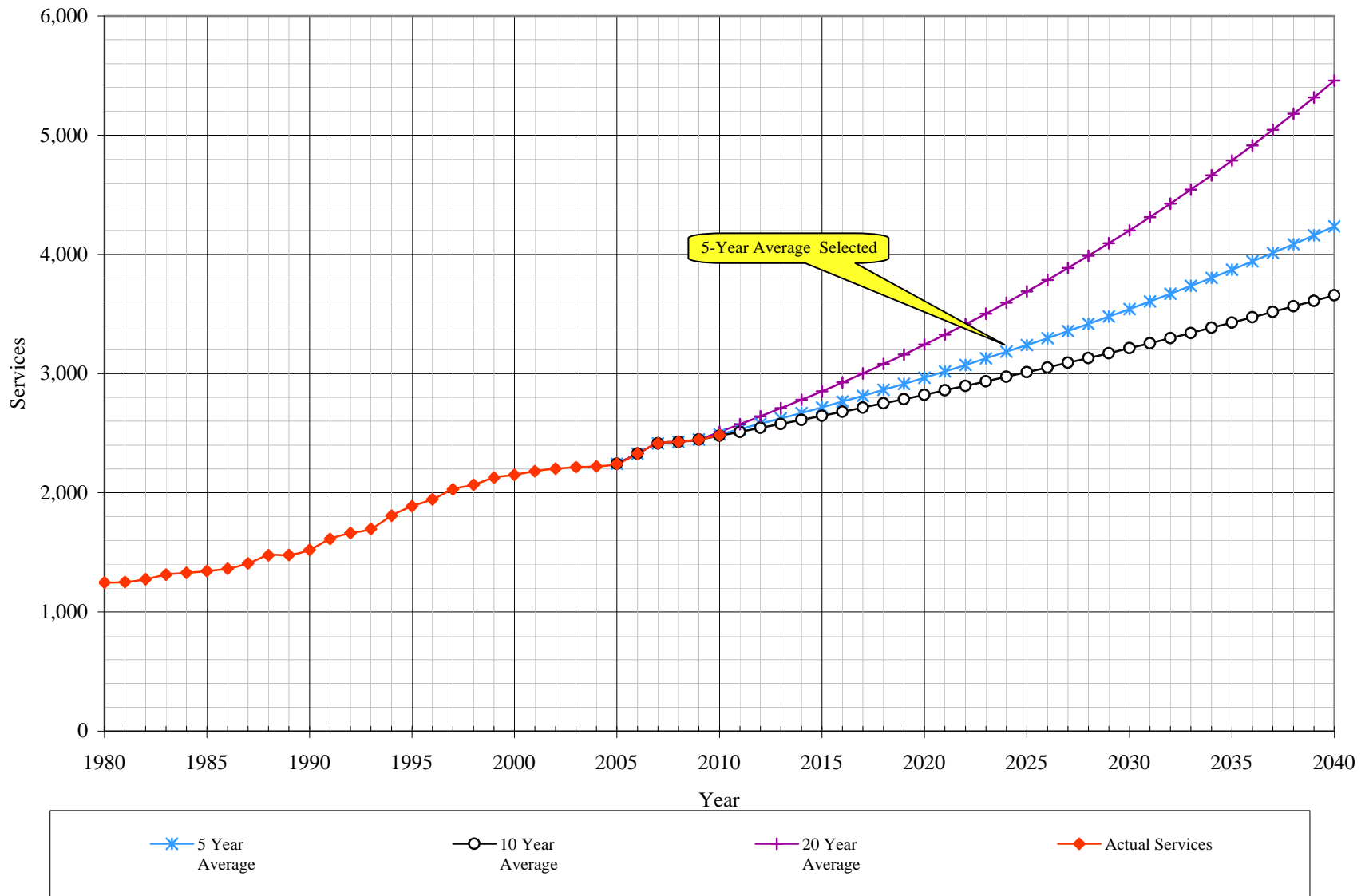
Scenario #4: Based on Maintaining Growth at the 5-Year Average Annual Growth with
 10-Year Proposed Development
 20-Year

Customer Type	Projected Services 2021	Projected Services 2022	Projected Services 2023	Projected Services 2024	Projected Services 2025	Projected Services 2026	Projected Services 2027	Projected Services 2028	Projected Services 2029	Projected Services 2030
Residential	4,730	4,862	4,997	5,137	5,280	5,428	5,579	5,735	5,895	6,060
Multi-Residential	53	57	60	64	69	74	79	84	90	96
Commercial	351	355	358	362	366	369	373	377	380	384
Industrial	40	43	45	48	52	55	58	62	66	70
Government	120	127	135	144	153	163	174	185	197	210
Other	9	9	9	10	10	10	11	11	12	12
Total	5,302	5,452	5,607	5,766	5,930	6,099	6,274	6,454	6,640	6,832

2030's Projections

Customer Type	Projected Services 2031	Projected Services 2032	Projected Services 2033	Projected Services 2034	Projected Services 2035	Projected Services 2036	Projected Services 2037	Projected Services 2038	Projected Services 2039	Projected Services 2040
Residential	6,229	6,403	6,582	6,765	6,954	7,148	7,348	7,553	7,764	7,981
Multi-Residential	102	109	117	125	133	142	152	162	173	185
Commercial	388	392	396	400	404	408	412	416	420	424
Industrial	75	80	85	90	96	102	109	116	123	131
Government	217	231	245	261	278	296	315	335	357	380
Other	12	13	13	13	14	14	15	15	16	16
Total	7,023	7,227	7,437	7,655	7,879	8,111	8,350	8,598	8,853	9,118

King City District Historical & Projected Services



California Water Service Company - King City District

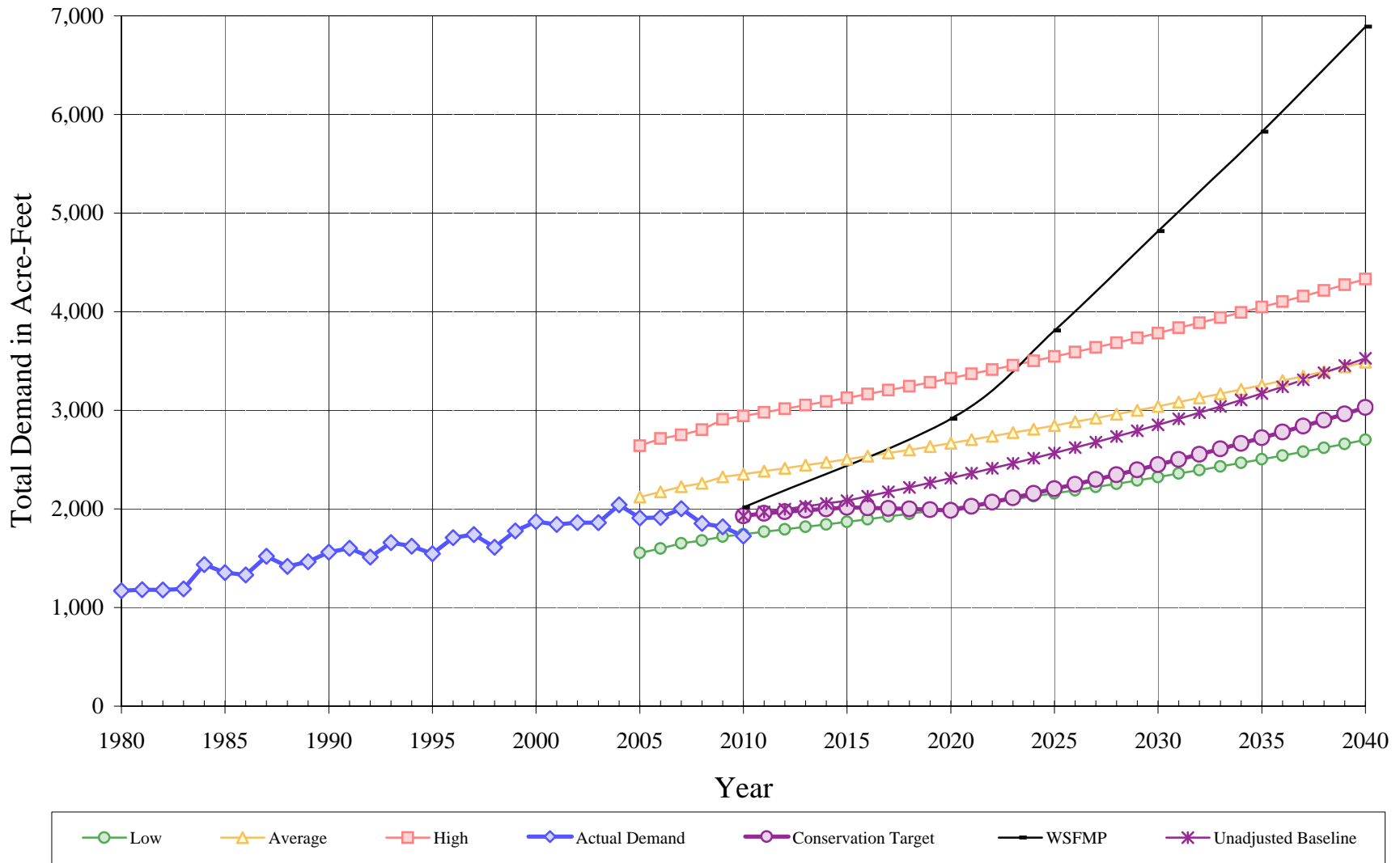
Water Supply and Demand Analysis and Projections

Actual & Projected Annual Average Services

Year	Actual Services	5 Year Average w/ Devel.	10 Year Average w/ Devel.	20 Year Average w/ Devel.	5 Year Average	10 Year Average	20 Year Average
1980	1,246						
1981	1,251						
1982	1,274						
1983	1,313						
1984	1,328						
1985	1,344						
1986	1,362						
1987	1,408						
1988	1,476						
1989	1,478						
1990	1,520						
1991	1,614						
1992	1,663						
1993	1,696						
1994	1,807						
1995	1,888						
1996	1,945						
1997	2,028						
1998	2,067						
1999	2,127						
2000	2,150						
2001	2,180						
2002	2,202						
2003	2,214						
2004	2,222						
2005	2,243	2,243	2,243	2,243	2,243	2,243	2,243
2006	2,328	2,328	2,328	2,328	2,328	2,328	2,328
2007	2,414	2,414	2,414	2,414	2,414	2,414	2,414
2008	2,428	2,428	2,428	2,428	2,428	2,428	2,428
2009	2,447	2,447	2,447	2,447	2,447	2,447	2,447
2010	2,482	2,490	2,479	2,514	2,490	2,479	2,510

Year	Actual Services	5 Year Average w/ Devel.	10 Year Average w/ Devel.	20 Year Average w/ Devel.	5 Year Average	10 Year Average	20 Year Average
2011		2,607	2,583	2,650	2,534	2,511	2,575
2012		2,973	2,937	3,043	2,579	2,544	2,641
2013		3,356	3,306	3,457	2,624	2,577	2,709
2014		3,667	3,599	3,802	2,670	2,611	2,779
2015		4,034	3,946	4,208	2,717	2,645	2,851
2016		4,258	4,147	4,475	2,765	2,679	2,925
2017		4,486	4,351	4,750	2,813	2,714	3,001
2018		4,569	4,407	4,883	2,863	2,750	3,080
2019		4,654	4,465	5,019	2,914	2,786	3,160
2020		4,740	4,523	5,161	2,965	2,822	3,242
2021		4,832	4,584	5,302	3,019	2,859	3,327
2022		4,922	4,643	5,452	3,073	2,896	3,414
2023		5,013	4,704	5,607	3,127	2,934	3,503
2024		5,106	4,765	5,766	3,183	2,972	3,595
2025		5,201	4,827	5,930	3,240	3,011	3,689
2026		5,298	4,890	6,099	3,298	3,050	3,786
2027		5,397	4,953	6,274	3,356	3,090	3,886
2028		5,498	5,018	6,454	3,417	3,130	3,988
2029		5,601	5,083	6,640	3,478	3,171	4,093
2030		5,706	5,149	6,832	3,540	3,213	4,201
2031		5,816	5,219	7,023	3,605	3,255	4,312
2032		5,925	5,287	7,227	3,670	3,297	4,426
2033		6,037	5,356	7,437	3,736	3,340	4,543
2034		6,150	5,425	7,655	3,803	3,384	4,663
2035		6,266	5,496	7,879	3,872	3,428	4,787
2036		6,384	5,568	8,111	3,942	3,473	4,914
2037		6,504	5,641	8,350	4,013	3,518	5,044
2038		6,627	5,714	8,598	4,086	3,564	5,179
2039		6,752	5,789	8,853	4,160	3,610	5,316
2040		6,880	5,864	9,118	4,235	3,658	5,458

King City District Historical & Projected Demand



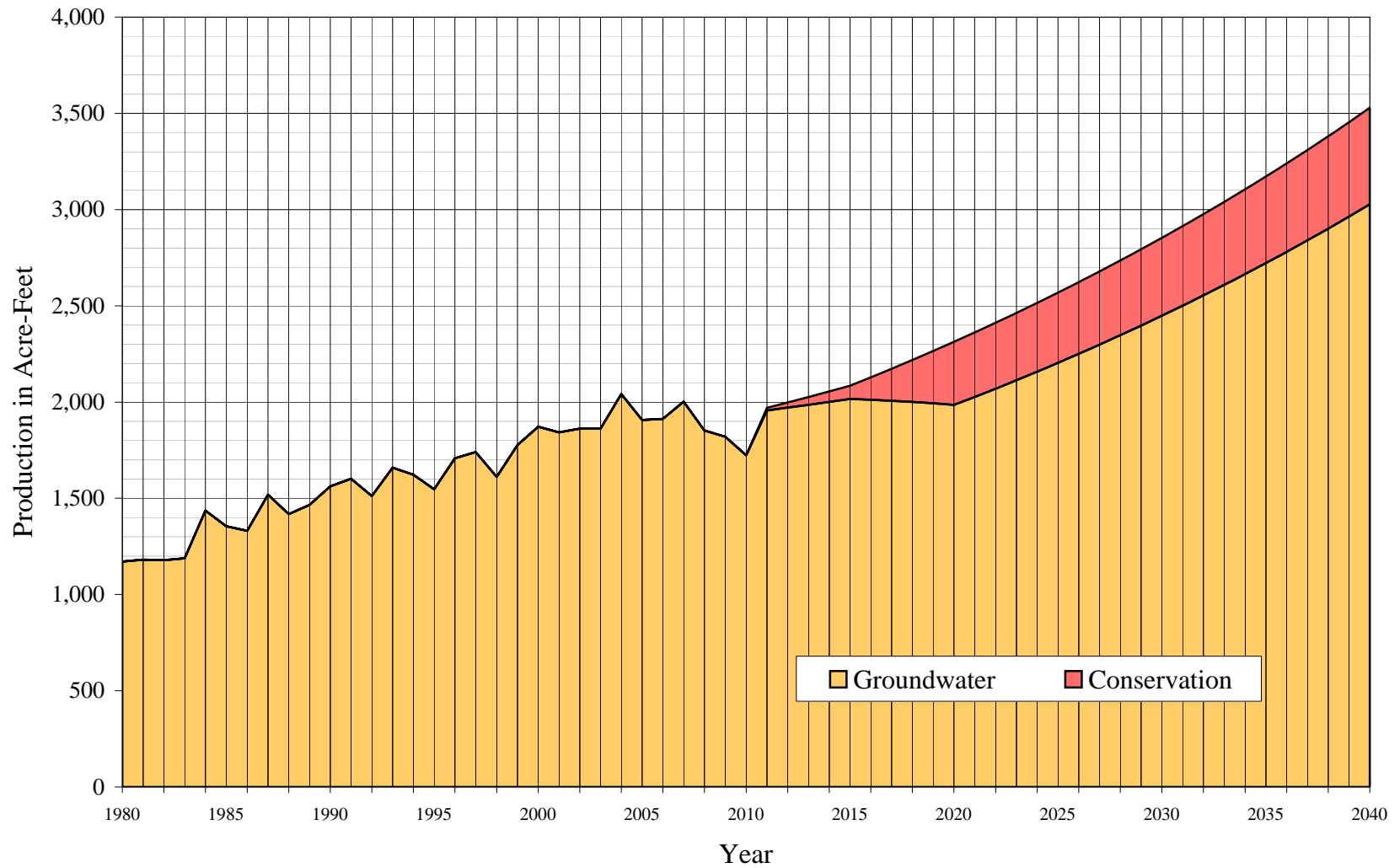
California Water Service Company - King City District
Water Supply and Demand Analysis and Projections
Projected Demand in Acre-Feet - Twenty Year Average Growth

Year	Actual Demand	Projection			Unadjusted Baseline Demand	Target Demand
		Low	Average	High		
1980	1,171					
1981	1,181					
1982	1,178					
1983	1,188					
1984	1,437					
1985	1,355					
1986	1,331					
1987	1,519					
1988	1,419					
1989	1,465					
1990	1,562					
1991	1,602					
1992	1,512					
1993	1,658					
1994	1,622					
1995	1,547					
1996	1,708					
1997	1,740					
1998	1,611					
1999	1,776					
2000	1,872					
2001	1,843					
2002	1,862					
2003	1,862					
2004	2,042					
2005	1,907	1,555	2,120	2,641		
2006	1,913	1,599	2,174	2,715		
2007	2,003	1,651	2,226	2,752		
2008	1,853	1,681	2,260	2,803		
2009	1,820	1,718	2,325	2,907		
2010	1,724	1,742	2,353	2,941	1,929	1,929

Year	Actual Demand	Projection			Unadjusted Baseline Demand	Target Demand
		Low	Average	High		
2011		1,768	2,383	2,980	1,969	1,956
2012		1,793	2,413	3,016	1,997	1,971
2013		1,818	2,442	3,052	2,026	1,986
2014		1,843	2,473	3,089	2,055	2,000
2015		1,869	2,504	3,126	2,085	2,015
2016		1,896	2,535	3,165	2,128	2,011
2017		1,923	2,567	3,204	2,173	2,006
2018		1,950	2,599	3,243	2,219	2,000
2019		1,978	2,633	3,284	2,265	1,993
2020		2,007	2,666	3,325	2,313	1,985
2021		2,037	2,703	3,370	2,362	2,027
2022		2,067	2,737	3,413	2,412	2,069
2023		2,097	2,773	3,456	2,463	2,113
2024		2,127	2,809	3,501	2,515	2,158
2025		2,158	2,846	3,546	2,568	2,204
2026		2,190	2,884	3,591	2,623	2,250
2027		2,222	2,922	3,638	2,678	2,298
2028		2,255	2,961	3,686	2,735	2,347
2029		2,288	3,000	3,734	2,793	2,397
2030		2,322	3,041	3,783	2,853	2,448
2031		2,359	3,084	3,837	2,914	2,500
2032		2,394	3,126	3,888	2,976	2,554
2033		2,430	3,168	3,940	3,040	2,608
2034		2,467	3,211	3,993	3,105	2,664
2035		2,504	3,256	4,047	3,172	2,721
2036		2,542	3,301	4,102	3,240	2,780
2037		2,580	3,346	4,158	3,310	2,840
2038		2,619	3,393	4,215	3,381	2,901
2039		2,659	3,440	4,273	3,454	2,964
2040		2,700	3,489	4,332	3,529	3,028

King City District

Historical and Projected Distribution of Demand by Source



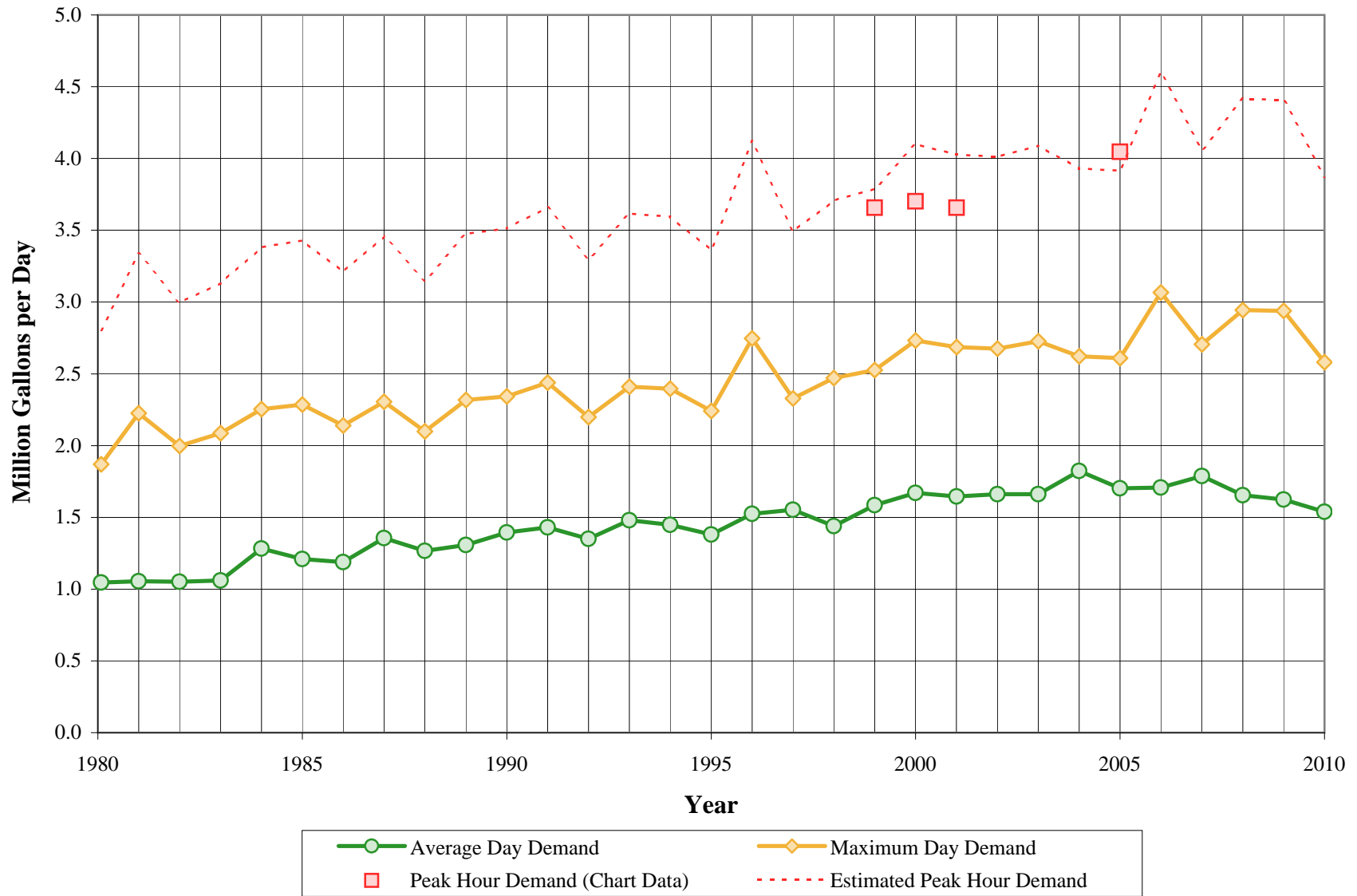
California Water Service Company - King City District
Water Supply and Demand Analysis and Projections
Historical and Projected Distribution of Demand by Source

Worksheet 17

Year	Purchased Water		Groundwater		Conservation		Total Supply		Year	Purchased Water		Groundwater		Conservation		Total	
	kGal	AFY	kGal	AFY	kGal	AFY	kGal	AFY		kGal	AFY	kGal	AFY	kGal	AFY	KGal	(Acre-Feet)
1980	0	0	381,502	1,171			381,502	1,171									
1981	0	0	384,765	1,181			384,765	1,181	2011	0	0	637,417	1,956	4,263	13	637,417	1,969
1982	0	0	383,998	1,178			383,998	1,178	2012	0	0	642,226	1,971	8,647	27	642,226	1,997
1983	0	0	387,160	1,188			387,160	1,188	2013	0	0	647,028	1,986	13,156	40	647,028	2,026
1984	0	0	468,133	1,437			468,133	1,437	2014	0	0	651,862	2,000	17,793	55	651,862	2,055
1985	0	0	441,673	1,355			441,673	1,355	2015	0	0	656,726	2,015	22,561	69	656,726	2,085
1986	0	0	433,571	1,331			433,571	1,331	2016	0	0	655,412	2,011	38,121	117	655,412	2,128
1987	0	0	494,974	1,519			494,974	1,519	2017	0	0	653,768	2,006	54,324	167	653,768	2,173
1988	0	0	462,219	1,419			462,219	1,419	2018	0	0	651,781	2,000	71,192	218	651,781	2,219
1989	0	0	477,487	1,465			477,487	1,465	2019	0	0	649,437	1,993	88,748	272	649,437	2,265
1990	0	0	509,094	1,562			509,094	1,562	2020	0	0	646,720	1,985	107,013	328	646,720	2,313
1991	0	0	521,846	1,602			521,846	1,602	2021	0	0	660,357	2,027	109,269	335	660,357	2,362
1992	0	0	492,583	1,512			492,583	1,512	2022	0	0	674,298	2,069	111,576	342	674,298	2,412
1993	0	0	540,375	1,658			540,375	1,658	2023	0	0	688,550	2,113	113,934	350	688,550	2,463
1994	0	0	528,479	1,622			528,479	1,622	2024	0	0	703,120	2,158	116,345	357	703,120	2,515
1995	0	0	503,949	1,547			503,949	1,547	2025	0	0	718,017	2,204	118,810	365	718,017	2,568
1996	0	0	556,572	1,708			556,572	1,708	2026	0	0	733,248	2,250	121,330	372	733,248	2,623
1997	0	0	566,885	1,740			566,885	1,740	2027	0	0	748,821	2,298	123,907	380	748,821	2,678
1998	0	0	524,982	1,611			524,982	1,611	2028	0	0	764,745	2,347	126,542	388	764,745	2,735
1999	0	0	578,781	1,776			578,781	1,776	2029	0	0	781,029	2,397	129,237	397	781,029	2,793
2000	0	0	609,870	1,872			609,870	1,872	2030	0	0	797,681	2,448	131,992	405	797,681	2,853
2001	0	0	600,468	1,843			600,468	1,843	2031	0	0	814,711	2,500	134,810	414	814,711	2,914
2002	0	0	606,600	1,862			606,600	1,862	2032	0	0	832,128	2,554	137,692	423	832,128	2,976
2003	0	0	606,662	1,862			606,662	1,862	2033	0	0	849,941	2,608	140,639	432	849,941	3,040
2004	0	0	665,356	2,042			665,356	2,042	2034	0	0	868,161	2,664	143,654	441	868,161	3,105
2005	0	0	621,433	1,907			621,433	1,907	2035	0	0	886,797	2,721	146,738	450	886,797	3,172
2006	0	0	623,356	1,913			623,356	1,913	2036	0	0	905,861	2,780	149,892	460	905,861	3,240
2007	0	0	652,569	2,003			652,569	2,003	2037	0	0	925,362	2,840	153,119	470	925,362	3,310
2008	0	0	603,678	1,853			603,678	1,853	2038	0	0	945,312	2,901	156,421	480	945,312	3,381
2009	0	0	592,907	1,820			592,907	1,820	2039	0	0	965,723	2,964	159,798	490	965,723	3,454
2010	0	0	561,704	1,724			561,704	1,724	2040	0	0	986,606	3,028	163,253	501	986,606	3,529

King City District

Average Day, Maximum Day, and Peak Demands



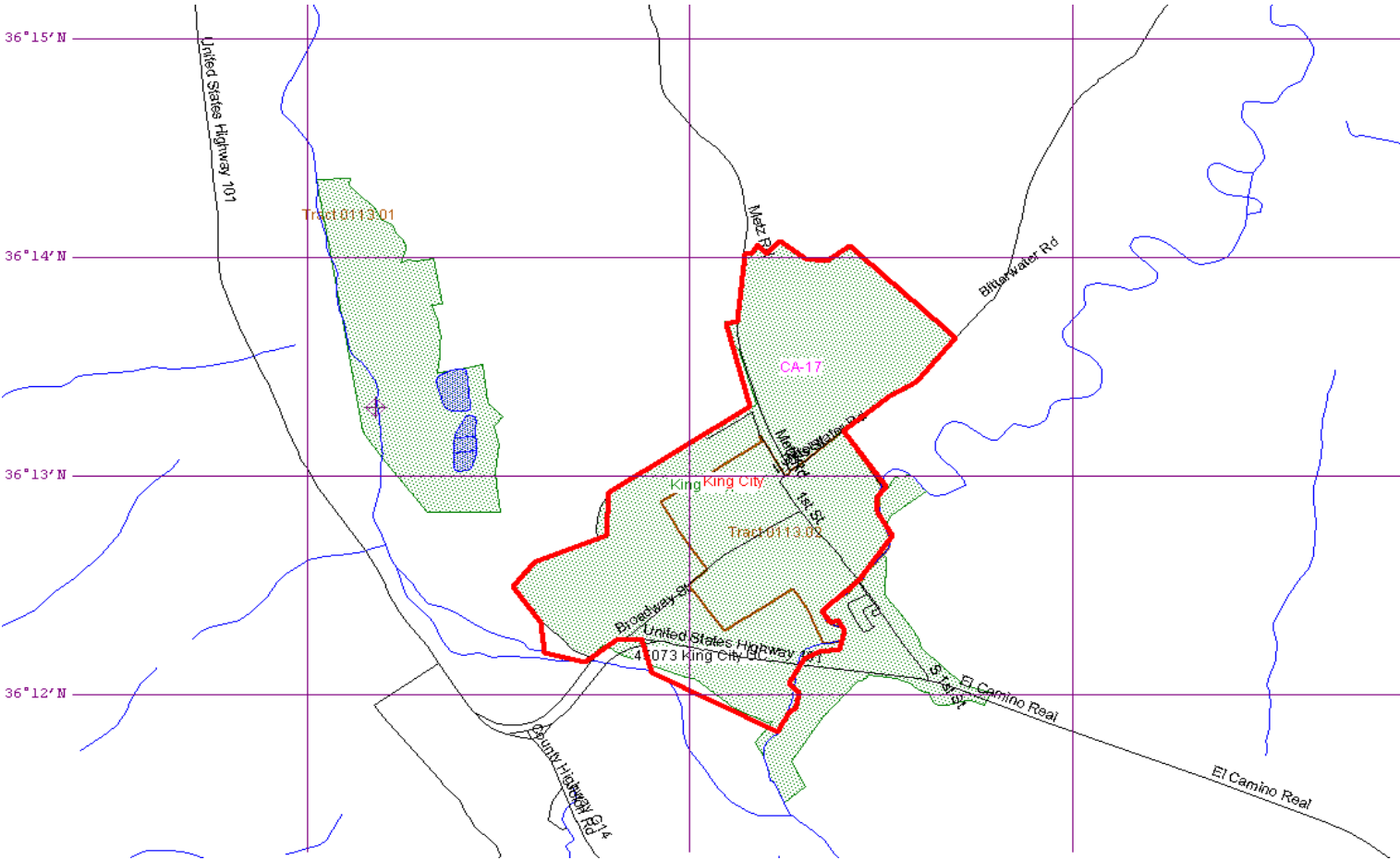
California Water Service Company - King City District
Water Supply and Demand Analysis and Projections
Historical and Projected Average Day, Maximum Day, and Peak Demand

Year	Historical Annual Demand		Average Day Demand		Maximum Day Demand		MDD ADD Ratio	Estimated Peak Hour Demand		PHD MDD Ratio	PHD ADD Ratio	Measured Peak Hour Demand		PHD MDD Ratio
	(AFY)	(MGY)	(MGD)	Per Service (GPD)	(MGD)	Per Service (GPD)		(MGD)	(GPM)			(MGD)	(GPM)	
1980	1,171	382	1.045	839	1.869	1,500	1.79	2.804	1,947	1.50	2.68			
1981	1,181	385	1.054	843	2.225	1,779	2.11	3.338	2,318	1.50	3.17			
1982	1,178	384	1.052	826	1.997	1,568	1.90	2.996	2,080	1.50	2.85			
1983	1,188	387	1.061	808	2.087	1,589	1.97	3.131	2,174	1.50	2.95			
1984	1,437	468	1.283	966	2.254	1,697	1.76	3.381	2,348	1.50	2.64			
1985	1,355	442	1.210	900	2.286	1,701	1.89	3.429	2,381	1.50	2.83			
1986	1,331	434	1.188	872	2.140	1,571	1.80	3.210	2,229	1.50	2.70			
1987	1,519	495	1.356	963	2.305	1,637	1.70	3.458	2,401	1.50	2.55			
1988	1,419	462	1.266	858	2.099	1,422	1.66	3.149	2,186	1.50	2.49			
1989	1,465	478	1.308	885	2.317	1,568	1.77	3.476	2,414	1.50	2.66			
1990	1,562	509	1.395	918	2.342	1,541	1.68	3.513	2,440	1.50	2.52			
1991	1,602	522	1.430	886	2.439	1,511	1.71	3.659	2,541	1.50	2.56			
1992	1,512	493	1.350	812	2.198	1,322	1.63	3.297	2,290	1.50	2.44			
1993	1,658	540	1.480	873	2.411	1,422	1.63	3.617	2,511	1.50	2.44			
1994	1,622	528	1.448	801	2.396	1,326	1.65	3.594	2,496	1.50	2.48			
1995	1,547	504	1.381	731	2.241	1,187	1.62	3.362	2,334	1.50	2.43			
1996	1,708	557	1.525	784	2.747	1,412	1.80	4.121	2,861	1.50	2.70			
1997	1,740	567	1.553	766	2.328	1,148	1.50	3.492	2,425	1.50	2.25			
1998	1,611	525	1.438	696	2.471	1,195	1.72	3.707	2,574	1.50	2.58			
1999	1,776	579	1.586	746	2.526	1,188	1.59	3.789	2,631	1.50	2.39	3.66	2,540	1.45
2000	1,872	610	1.671	777	2.733	1,271	1.64	4.100	2,847	1.50	2.45	3.70	2,570	1.35
2001	1,843	600	1.645	755	2.685	1,232	1.63	4.028	2,797	1.50	2.45	3.66	2,540	1.36
2002	1,862	607	1.662	755	2.675	1,215	1.61	4.013	2,786	1.50	2.41			
2003	1,862	607	1.662	751	2.726	1,231	1.64	4.089	2,840	1.50	2.46			
2004	2,042	665	1.823	820	2.621	1,180	1.44	3.932	2,730	1.50	2.16			
2005	1,907	621	1.703	759	2.610	1,164	1.53	3.915	2,719	1.50	2.30	4.05	2,810	1.55
2006	1,913	623	1.708	734	3.067	1,317	1.80	4.601	3,195	1.50	2.69			
2007	2,003	653	1.788	741	2.706	1,121	1.51	4.059	2,819	1.50	2.27			
2008	1,853	604	1.654	681	2.944	1,213	1.78	4.416	3,067	1.50	2.67			
2009	1,820	593	1.624	664	2.939	1,201	1.81	4.409	3,061	1.50	2.71			
2010	1,724	562	1.539	620	2.581	1,040	1.68	3.872	2,689	1.50	2.52			
5 year Average (2006-2010)			1.663	688	2.847	1,178	1.72	4.271	2,966	1.50	2.57			
10 year Average (2001-2010)			1.681	728	2.755	1,191	1.64	4.133	2,870	1.50	2.46			

California Water Service Company - King City District

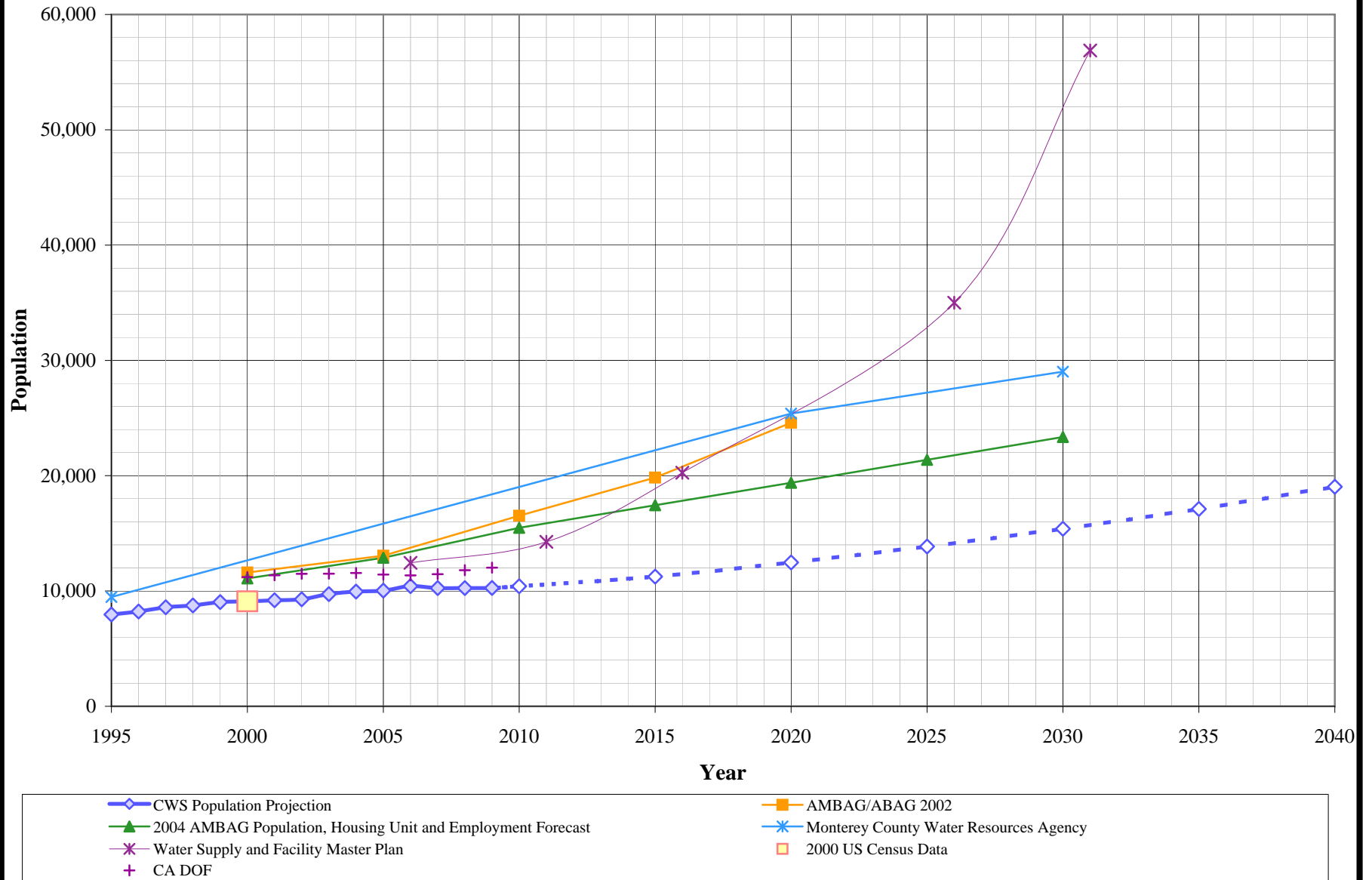
Water Supply and Demand Analysis and Projections

US Census 2000 Tract Map Summary



Census Tract Blocks	Population	Housing Units	POP/HOU
105	10,866	2,788	3.90

King City District Population Estimate and Projections



California Water Service Company - King City District
Water Supply and Demand Analysis and Projections

Population as of the 2000 Average Annual Services

Estimated District Population based on 2000 U.S. Census Data & Annual Service Count

District Communities Served: King City

Year	Single Family Residential Services (DU)	Multi Family Residential			Flat Rate Residential Services (DU)	Total Residential Dwelling Units	Estimated District Population
		Services	Residential Units (DU)	Unit Density			
1995	1,564	8	100	12.5	0	1,664	7,963
1996	1,620	8	99	12.4	0	1,719	8,226
1997	1,696	8	99	12.4	0	1,795	8,590
1998	1,727	8	101	12.6	0	1,828	8,748
1999	1,787	10	101	10.1	0	1,888	9,035
2000	1,792	11	110	10.0	0	1,902	9,102
2001	1,795	13	126	9.7	0	1,921	9,193
2002	1,817	12	122	10.2	0	1,939	9,279
2003	1,831	12	202	16.8	0	2,033	9,729
2004	1,839	12	240	20.0	0	2,079	9,949
2005	1,863	11	234	21.3	0	2,097	10,035
2006	1,943	11	234	21.3	0	2,177	10,418
2007	2,023	11	119	10.8	0	2,142	10,251
2008	2,026	19	117	6.2	0	2,143	10,255
2009	2,026	24	118	4.9	0	2,144	10,260
2010	2,066	24	109	4.44	0	2,175	10,406
2015	2,278	27	72	2.66	0	2,350	11,245
2020	2,512	30	95	3.21	0	2,607	12,478
2025	2,770	33	125	3.82	0	2,895	13,853
2030	3,054	36	162	4.48	0	3,216	15,390
2035	3,368	40	207	5.22	0	3,575	17,110
2040	3,714	44	264	6.03	0	3,978	19,035

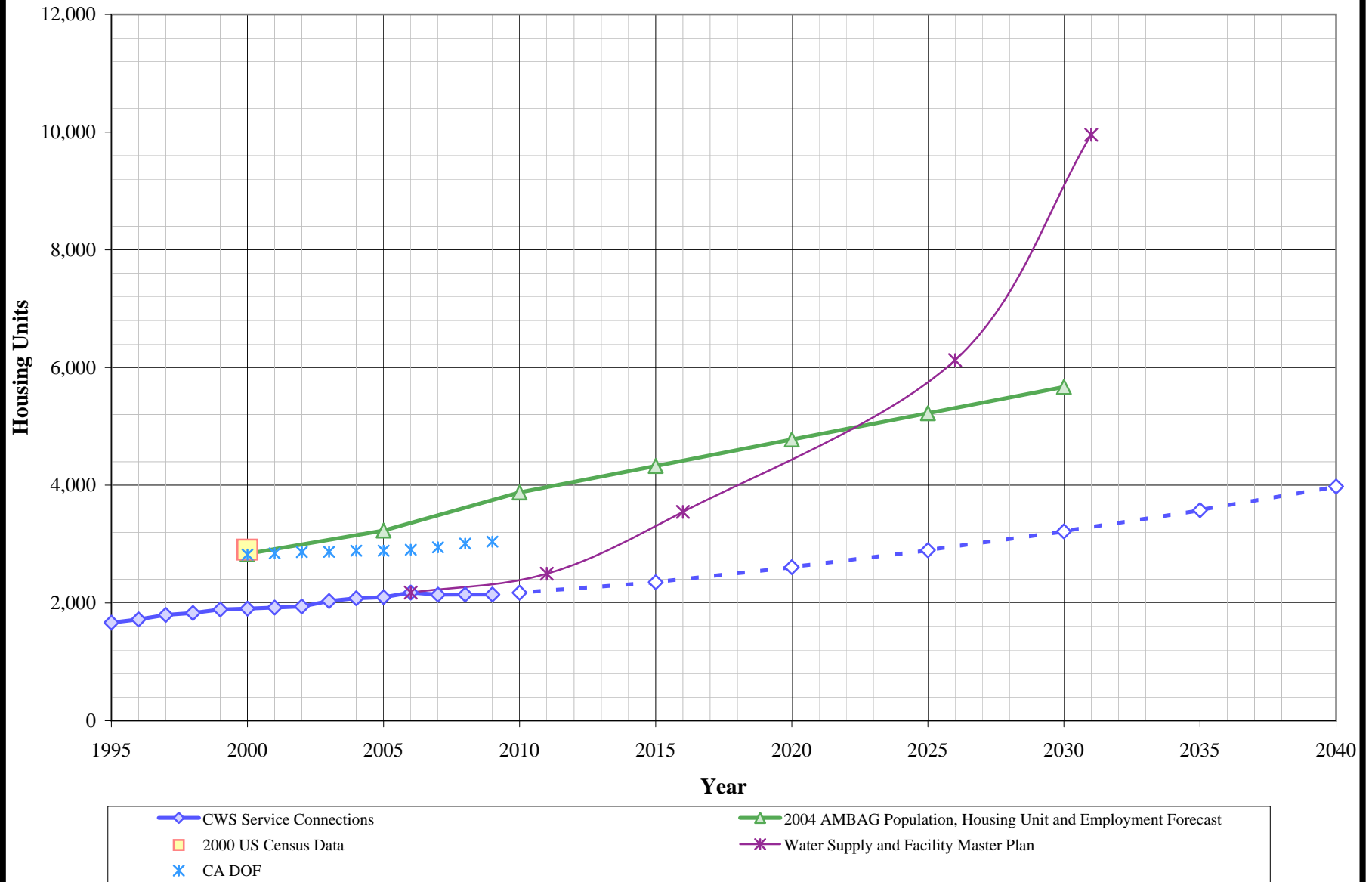
US Census 2000		Calculated Persons per CWS DU	Calculated Persons per US Census Housing Unit
Population	Housing Units		

9,102	2,906	4,785	3,132
-------	-------	-------	-------

Note: Unit density suspect from 2003 to 2006. Estimate based on 1999 to 2002 and 2007

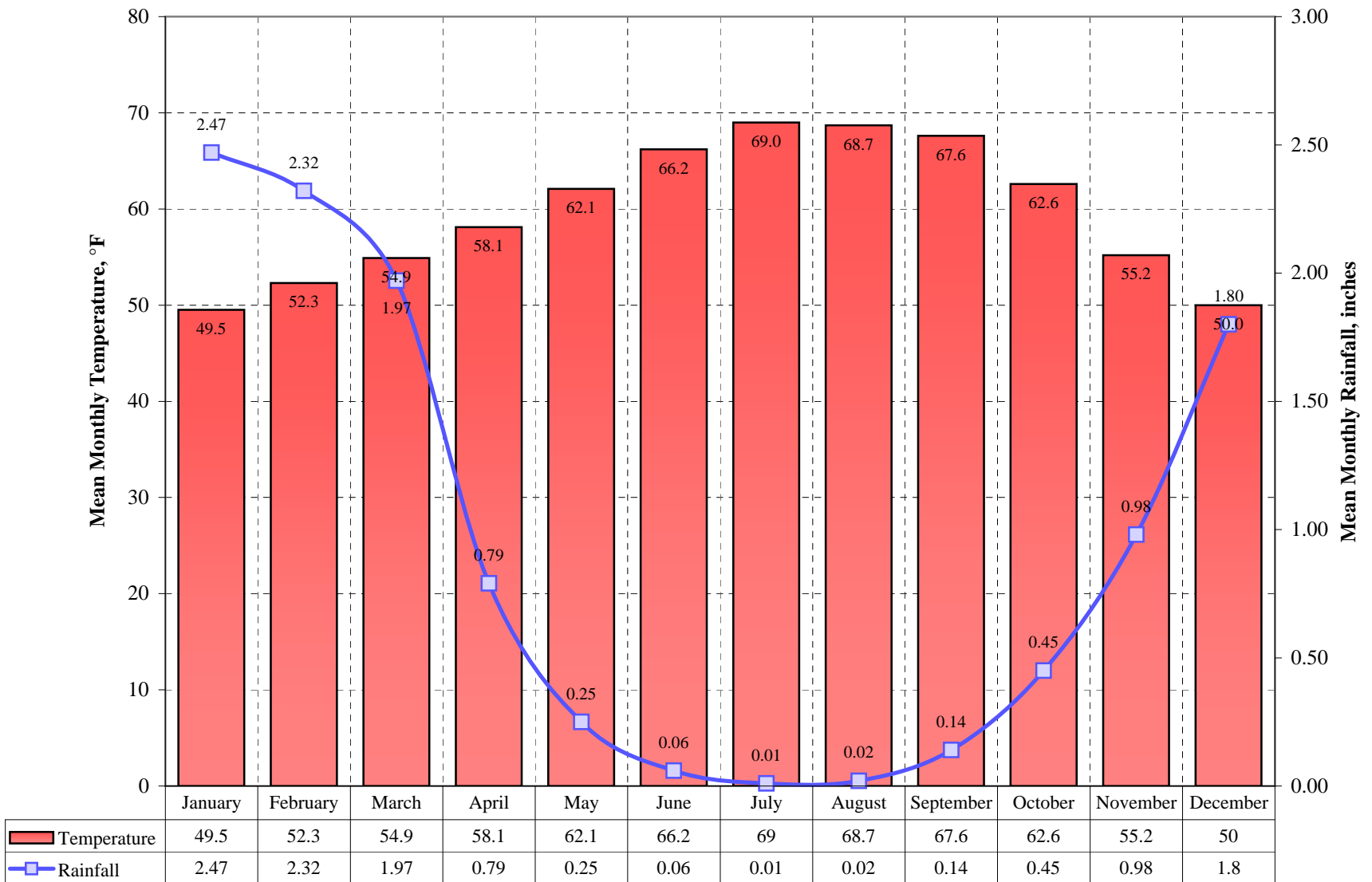
King City District

Housing Service Connection Estimate and Projections

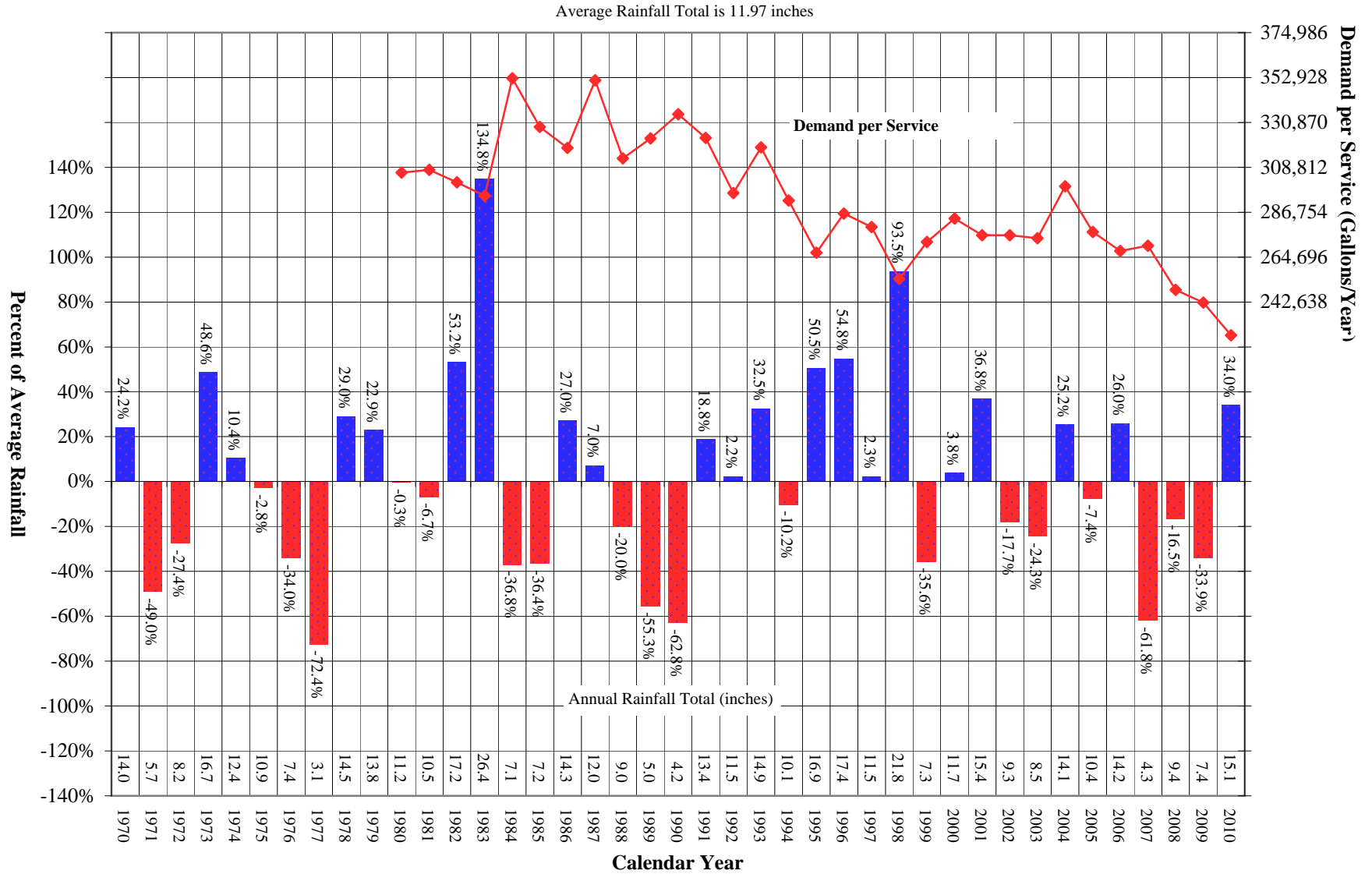


King City District

Average Monthly Temperature and Rainfall



King City District Comparison of Annual Rainfall to Historical Average



California Water Service Company - King City

Water Supply and Demand Analysis and Projections

Temperature & Rainfall History

Year	Annual Average Temp.	Annual Average Rainfall	Rainfall Percent Variation	Demand per Service (Gal / Yr)	Percent of Average Demand	Year	Annual Average Temp.	Annual Average Rainfall	Rainfall Percent Variation	Demand per Service (Gal / Yr)	Percent of Average Demand
1970	58.8	13.97	24.2%			1995	59.6	16.93	50.5%	266,922	91.3%
1971	57.5	5.74	-49.0%			1996	59.5	17.41	54.8%	286,155	97.9%
1972	61.1	8.17	-27.4%			1997	60.4	11.51	2.3%	279,529	95.6%
1973	66.2	16.72	48.6%			1998	57.8	21.77	93.5%	253,983	86.9%
1974	64.2	12.42	10.4%			1999	58.4	7.25	-35.6%	272,111	93.1%
1975	60.5	10.94	-2.8%			2000	60.7	11.68	3.8%	283,660	97.0%
1976	58.8	7.43	-34.0%			2001	60.5	15.39	36.8%	275,444	94.2%
1977	59.5	3.10	-72.4%			2002	60.1	9.26	-17.7%	275,477	94.2%
1978	60.2	14.51	29.0%			2003	60.6	8.52	-24.3%	274,012	93.7%
1979	59.1	13.83	22.9%			2004	60.6	14.09	25.2%	299,440	102.4%
1980	59.1	11.22	-0.3%	306,181	104.7%	2005	61.0	10.42	-7.4%	277,054	94.8%
1981	59.9	10.50	-6.7%	307,566	105.2%	2006	60.2	14.17	26.0%	267,765	91.6%
1982	57.4	17.23	53.2%	301,411	103.1%	2007	59.9	4.30	-61.8%	270,327	92.5%
1983	59.4	26.41	134.8%	294,867	100.9%	2008	60.4	9.39	-16.5%	248,632	85.1%
1984	59.0	7.11	-36.8%	352,510	120.6%	2009	60.6	7.44	-33.9%	242,300	82.9%
1985	59.0	7.15	-36.4%	328,626	112.4%	2010	59.8	15.07	34.0%	226,311	77.4%
1986	60.0	14.29	27.0%	318,334	108.9%	2011					
1987	59.2	12.04	7.0%	351,544	120.3%	2012					
1988	59.4	9.00	-20.0%	313,157	107.1%	2013					
1989	59.6	5.03	-55.3%	323,063	110.5%	2014					
1990	59.4	4.19	-62.8%	334,930	114.6%	2015					
1991	59.6	13.37	18.8%	323,325	110.6%	2016					
1992	60.9	11.50	2.2%	296,201	101.3%	2017					
1993	60.3	14.91	32.5%	318,617	109.0%	2018					
1994	58.1	10.10	-10.2%	292,462	100.0%	2019					

Source: Western Regional Climate Center:

<http://www.wrcc.dri.edu/cgi-bin/cliMAIN.pl?ca4555>

Calendar Year	Average Water Year	Normal Water Year	Single-Dry Water Year	Multiple-Dry Water Years			
				1	2	3	4
	-	2000	1999	1988	1989	1990	1991
Demand per Service (gal/yr)	292,320	283,660	272,111	313,157	323,063	334,930	323,325
Difference from Average	100.0%	100.0%	95.9%	110.4%	113.9%	118.1%	114.0%

California Water Service Company - King City Water Supply and Demand Analysis and Projections

Temperature Data

Station:(044555) KING CITY															
From Year=1902 To Year=2010															
	Monthly Averages			Daily Extremes				Monthly Extremes				Max. Temp.		Min. Temp.	
	Max.	Min.	Mean	High	Date	Low	Date	Highest Mean	Year	Lowest Mean	Year	>= 90 F	<= 32 F	<= 32 F	<= 0 F
	F	F	F	F	dd/yyyy or yyyymmdd	F	dd/yyyy or yyyymmdd	F	-	F	-	# Days	# Days	# Days	# Days
January	64.1	34.9	49.5	97	7/1925	10	6/1904	58.7	1915	40.9	1937	0	0	13.1	0
February	66.7	37.9	52.3	91	28/1923	19	20/1912	59.8	1915	44	1912	0.1	0	7.4	0
March	70.3	39.5	54.9	93	11/2007	21	5/1923	62.5	1915	48.7	1935	0.2	0	4.3	0
April	74.8	41.4	58.1	104	21/2009	20	11/1903	64	1933	50.1	1967	1.8	0	1.9	0
May	79.1	45.1	62.1	110	29/1910	27	13/1917	69.2	1915	56.5	1911	4.1	0	0.3	0
June	83.9	48.5	66.2	120	24/1925	31	26/1911	76.1	1912	58.8	1911	7	0	0.1	0
July	86.9	51	69	116	7/1905	30	13/1920	78.4	1912	62.5	1920	10.2	0	0.1	0
August	86.5	51.1	68.7	113	23/1931	31	1/1964	80.1	1912	64	1964	9.4	0	0	0
September	86.3	49	67.6	113	2/1955	32	30/1911	77.9	1908	62	1986	9.9	0	0	0
October	81.3	44.1	62.6	109	1/1980	23	19/1932	69.9	1918	57.7	1971	6.9	0	1.3	0
November	72	38.1	55.2	95	2/1930	17	27/1906	64.1	1914	47.9	1994	0.7	0	7.3	0
December	65.4	34.7	50	92	11/1914	14	9/1903	63.5	1914	42.5	1911	0.2	0	13.7	0
Annual	76.4	42.9	59.7	120	19250624	10	19040106	65.1	1915	56.3	1911	50.6	0	49.5	0

	Jan	Feb	Mar	Apr	May	Jun	Jul	Aug	Sep	Oct	Nov	Dec	Total
Monthly Average ETo Report	1.24	1.96	3.41	5.10	6.82	7.80	8.06	7.13	5.40	3.72	1.80	0.93	53.30

Source: California Irrigation Management Information System (CIMIS), <http://www.cimis.water.ca.gov/cimis/welcome.jsp>, EvapoTranspiration (Eto) Zones Map, Zone 12

**California Water Service Company - King City
Water Supply and Demand Analysis and Projections**

Precipitaion Data

Station:(044555) KING CITY														
From Year=1902 To Year=2010														
	Precipitation											Total Snowfall		
	Mean	High	Year	Low	Year	1 Day Max.	>= 0.01 in.	>= 0.10 in.	>= 0.50 in.	>= 1.00 in.	Mean	High	Year	
	in.	in.	-	in.	-	in.	dd/yyyy or yyyymmdd	# Days	# Days	# Days	# Days	in.	in.	-
January	2.47	8.43	1907	0	1976	3.72	18/1914	8	5	2	1	0.1	5.3	1957
February	2.32	10.5	1998	0	1912	2.7	3/1998	7	5	2	0	0	0	1918
March	1.97	8.9	1911	0	1956	3	10/1995	6	4	1	0	0	0	1925
April	0.79	4.14	1958	0	1907	1.58	10/1982	4	2	0	0	0	0	1910
May	0.25	2.11	1998	0	1903	0.9	27/1906	1	1	0	0	0	0	1916
June	0.06	1	1931	0	1904	0.78	9/1929	0	0	0	0	0	0	1950
July	0.01	0.22	1936	0	1902	0.15	9/1936	0	0	0	0	0	0	1926
August	0.02	1.14	1976	0	1902	0.87	18/1976	0	0	0	0	0	0	1948
September	0.14	2.29	1989	0	1902	1.67	12/1918	1	0	0	0	0	0	1924
October	0.45	3.38	2004	0	1905	1.88	29/1996	2	1	0	0	0	0	1948
November	0.98	4.28	1972	0	1907	1.69	28/1970	4	2	1	0	0	0	1950
December	1.8	7.69	1955	0	1910	2.41	23/1955	6	4	1	0	0.1	3	1954
Annual	11.25	26.41	1983	3.14	1953	3.72	19140118	40	25	7	2	0.1	5.3	1957

California Water Service Company - King City District
Water Supply and Demand Analysis and Projections

Groundwater Facilities

Unit No.	Design Capacity		Status
	Active	Inactive	
1-02		600	inactive
1-03		500	inactive
2-02		500	inactive
2-03		550	inactive
5-01		600	inactive
6-01	850		active
7-01	1000		active
8-01	1000		active
12-01	1000		active
13-01	1500		active
14-01	2000		active

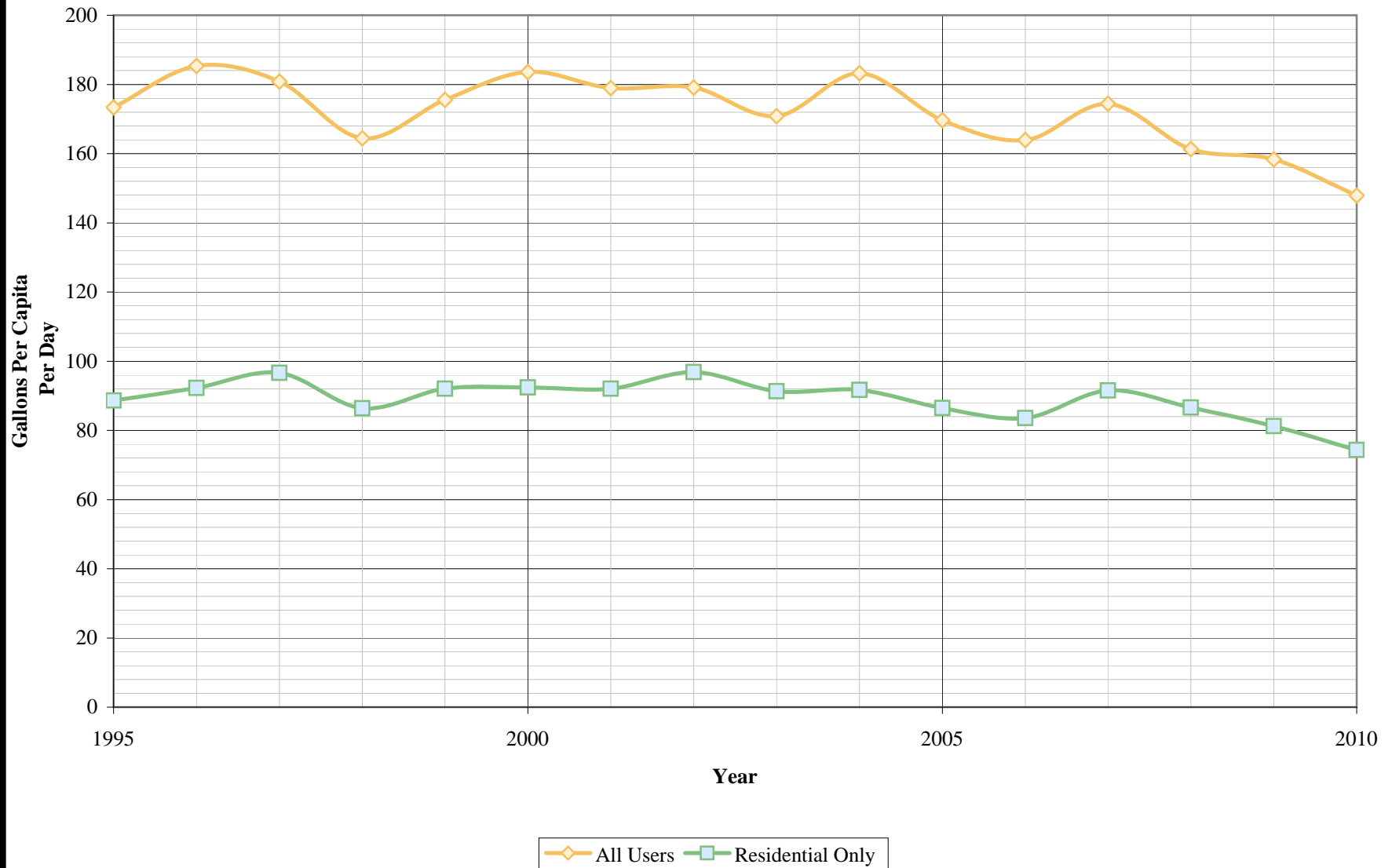
11	6	5	Units
----	---	---	-------

Total Design Capacity	10,100	7,350	2,750	GPM
	14.54	10.58	3.96	MGD
	16,291	11,856	4,436	AFY

Notes:
 1) Listed pump capacities on this worksheet represent design flowrates, actual flowrates are highly dependent on local system pressures, well characteristics, and other design criteria
 2) Values in bold are estimated

Updated 1/1/2011

King City District Per Capita Consumption



California Water Service Company - King City District
Water Supply and Demand Analysis and Projections

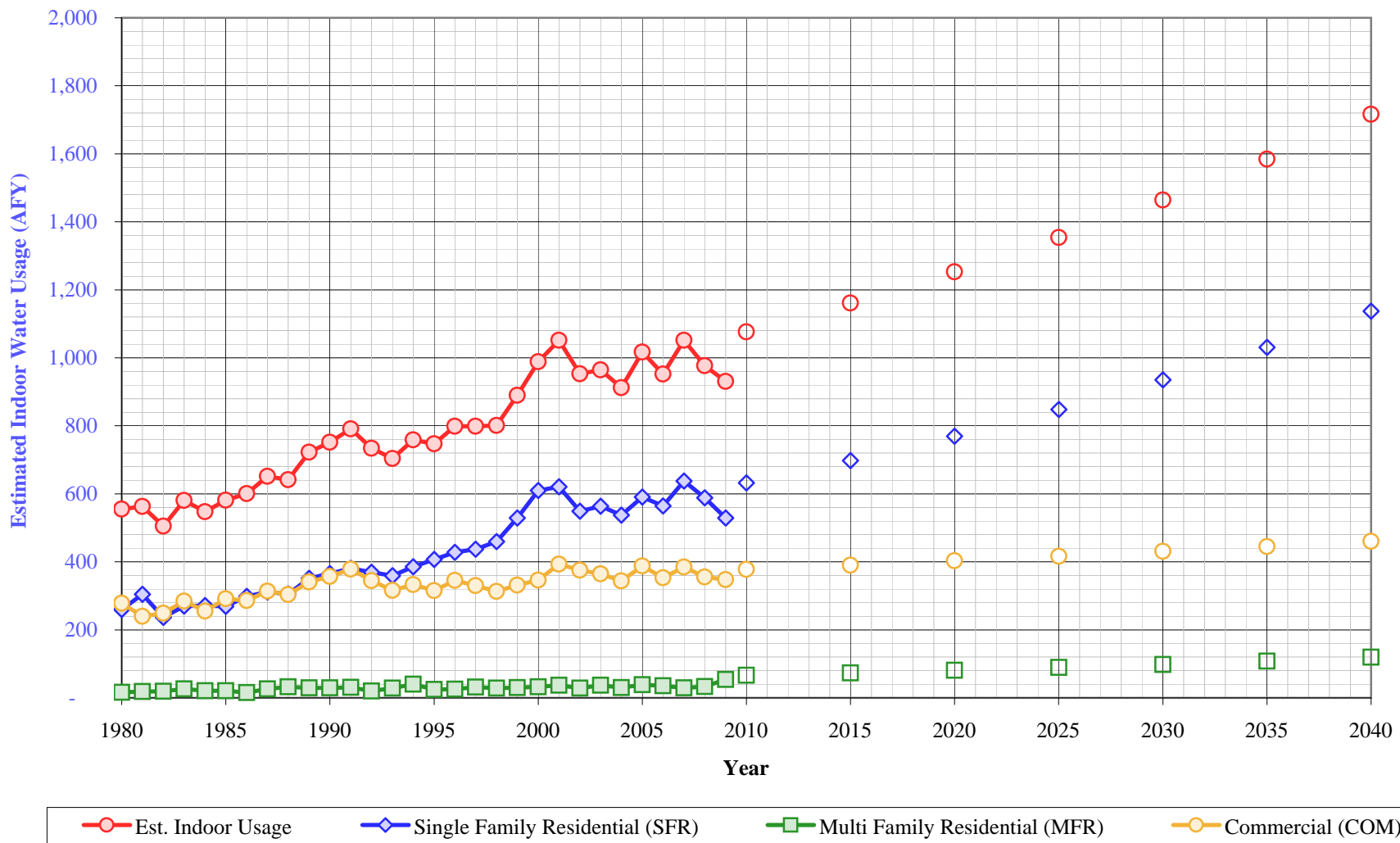
Per Capita Water Demand Calculation

Year	All Users			Residential Only		
	Usage (AFY)	Usage (MGY)	Gallons Per Capita Per Day	Usage (AFY)	Usage (MGY)	Gallons Per Capita Per Day
1995	1,547	504	173	791	258	89
1996	1,708	557	185	850	277	92
1997	1,740	567	181	930	303	97
1998	1,611	525	164	846	276	86
1999	1,776	579	176	932	304	92
2000	1,872	610	184	942	307	92
2001	1,843	600	179	948	309	92
2002	1,862	607	179	1,006	328	97
2003	1,862	607	171	995	324	91
2004	2,042	665	183	1,022	333	92
2005	1,907	621	170	972	317	86
2006	1,913	623	164	975	318	84
2007	2,003	653	174	1,051	342	92
2008	1,853	604	161	995	324	87
2009	1,820	593	158	934	304	81
2010	1,724	562	148	867	282	74
5 Yr. Avg.	1,862	607	161	964	314	83
10 Yr. Avg.	1,883	613	169	976	318	88

Five year average is from years 2006 through 2010.

Ten year average is from years 2001 through 2010.

King City District Estimated Indoor Water Usage



California Water Service Company - King City District
Water Supply and Demand Analysis and Projections

Estimated Indoor/Outdoor Water Usage

Year	Single Family Residential (SFR)							Multi Family Residential (MFR)				Commercial (COM)				Est. Indoor Usage
	Metered Single Family Residential Indoor Use (Annualized 90% of January Total)			Indoor Flat Rate Usage (AFY)	Total SFR Indoor Usage			Multi Family Residential January Usage (CCF)	Multi Family Residential Indoor Use (Annualized 90% of January)			Commercial (CCF)	Commercial Indoor Use (Annualized 90% of January Total)			
	JAN (CCF)	AFY	AFY/Service		AFY	GPD/Service	%		AFY	GPD/Service	%		AFY	GPD/Service	%	
1980	10,491	260	0.27	0.0	260	239	54%	664	16	1,837	74%	11,232	278	1,062	71%	555
1981	12,288	305	0.31	0.0	305	278	61%	741	18	2,050	81%	9,683	240	928	62%	563
1982	9,538	236	0.24	0.0	236	211	50%	772	19	2,136	75%	10,048	249	963	64%	505
1983	10,887	270	0.26	0.0	270	233	56%	1,060	26	2,933	102%	11,463	284	1,080	72%	580
1984	10,944	271	0.26	0.0	271	232	48%	842	21	2,330	80%	10,308	256	959	56%	548
1985	10,857	269	0.25	0.0	269	226	49%	844	21	2,335	81%	11,749	291	1,097	66%	581
1986	12,042	299	0.28	0.0	299	247	54%	629	16	1,740	57%	11,542	286	1,069	63%	600
1987	12,564	312	0.28	0.0	312	248	54%	1,051	26	2,908	77%	12,659	314	1,172	67%	651
1988	12,316	305	0.26	0.0	305	232	51%	1,320	33	3,652	86%	12,242	304	1,063	64%	642
1989	14,189	352	0.30	0.0	352	268	59%	1,196	30	3,309	86%	13,746	341	1,184	70%	722
1990	14,738	365	0.30	0.0	365	270	60%	1,177	29	3,256	72%	14,409	357	1,222	67%	752
1991	15,373	381	0.30	0.0	381	264	66%	1,253	31	3,467	85%	15,269	379	1,252	76%	791
1992	14,901	369	0.28	0.0	369	247	57%	809	20	2,238	55%	13,889	344	1,110	72%	734
1993	14,486	359	0.26	0.0	359	234	53%	1,140	28	3,154	70%	12,765	316	1,027	65%	704
1994	15,559	386	0.26	0.0	386	233	55%	1,610	40	4,454	98%	13,436	333	1,093	70%	759
1995	16,434	407	0.26	0.0	407	233	54%	986	24	2,728	65%	12,722	315	1,047	69%	747
1996	17,264	428	0.26	0.0	428	236	53%	1,027	25	2,841	65%	13,921	345	1,141	72%	799
1997	17,635	437	0.26	0.0	437	230	49%	1,269	31	3,511	76%	13,310	330	1,079	69%	799
1998	18,542	460	0.27	0.0	460	238	57%	1,152	29	3,187	78%	12,618	313	1,019	71%	801
1999	21,318	529	0.30	0.0	529	264	59%	1,202	30	2,661	72%	13,358	331	1,091	69%	890
2000	24,586	610	0.34	0.0	610	304	68%	1,319	33	2,654	70%	13,965	346	1,096	68%	989
2001	25,046	621	0.35	0.0	621	309	68%	1,491	37	2,539	93%	15,875	394	1,160	72%	1,052
2002	22,137	549	0.30	0.0	549	270	57%	1,151	29	2,123	67%	15,142	375	1,110	68%	953
2003	22,725	563	0.31	0.0	563	275	59%	1,485	37	2,739	79%	14,707	365	1,078	69%	965
2004	21,675	537	0.29	0.0	537	261	55%	1,222	30	2,254	67%	13,876	344	1,017	63%	912
2005	23,807	590	0.32	0.0	590	283	64%	1,569	39	3,157	88%	15,652	388	1,143	73%	1,017
2006	22,767	564	0.29	0.0	564	259	60%	1,416	35	2,849	85%	14,233	353	1,026	64%	952
2007	25,705	637	0.32	0.0	637	281	63%	1,197	30	2,409	77%	15,529	385	1,088	70%	1,052
2008	23,734	588	0.29	0.0	588	259	63%	1,337	33	1,558	57%	14,322	355	1,016	65%	977
2009	21,322	529	0.26	0.0	529	233	62%	2,184	54	2,014	72%	14,027	348	995	69%	931
2010					633	273	62%		67	2,430	76%		377	1,073	68%	1,077
2015					698	273	62%		73	2,430	76%		390	1,073	68%	1,161
2020					769	273	62%		81	2,430	76%		403	1,073	68%	1,253
2025					848	273	62%		89	2,430	76%		417	1,073	68%	1,354
2030					935	273	62%		98	2,430	76%		431	1,073	68%	1,464
2035					1,031	273	62%		108	2,430	76%		445	1,073	68%	1,584
2040					1,137	273	62%		119	2,430	76%		460	1,073	68%	1,716

California Water Service Company - King City District

Water Supply and Demand Analysis and Projections

Comparison of Projected Demand and Conservation Savings Between SBx7-7 Compliance Targets and Actual Proposed Programs

Year	SBx7-7 Compliance Target (gpcd)	Anticipated GPCD with Proposed Programs*	Estimated Population	Undadjusted Baseline Demand (AFY)	SBx7-7 Compliance Target Demand (AFY)	Anticipated Demand with Proposed Programs (AFY)	Compliance Target Savings Requirement (AFY)	Savings Due to Proposed Programs (AFY)
2005-2009 Average	165	165	10,244	1,899	1,899	1,899	0	0
2010	165	165	10,406	1,929	1,929	1,929	0	0
2011	164	166	10,623	1,969	1,956	1,975	13	-6
2012	163	164	10,775	1,997	1,971	1,979	27	18
2013	162	162	10,929	2,026	1,986	1,983	40	43
2014	161	159	11,086	2,055	2,000	1,974	55	81
2015	160	157	11,245	2,085	2,015	1,978	69	107
2016	156	152	11,481	2,128	2,011	1,959	117	170
2017	153	148	11,722	2,173	2,006	1,938	167	235
2018	149	143	11,968	2,219	2,000	1,916	218	303
2019	146	138	12,220	2,265	1,993	1,892	272	374
2020	142	142	12,478	2,313	1,985	1,985	328	328
2021	142	142	12,741	2,362	2,027	2,027	335	335
2022	142	142	13,010	2,412	2,069	2,069	342	342
2023	142	142	13,285	2,463	2,113	2,113	350	350
2024	142	142	13,566	2,515	2,158	2,158	357	357
2025	142	142	13,853	2,568	2,204	2,204	365	365
2026	142	142	14,147	2,623	2,250	2,250	372	372
2027	142	142	14,448	2,678	2,298	2,298	380	380
2028	142	142	14,755	2,735	2,347	2,347	388	388
2029	142	142	15,069	2,793	2,397	2,397	397	397
2030	142	142	15,390	2,853	2,448	2,448	405	405
2031	142	142	15,719	2,914	2,500	2,500	414	414
2032	142	142	16,055	2,976	2,554	2,554	423	423
2033	142	142	16,399	3,040	2,608	2,608	432	432
2034	142	142	16,750	3,105	2,664	2,664	441	441
2035	142	142	17,110	3,172	2,721	2,721	450	450
2036	142	142	17,478	3,240	2,780	2,780	460	460
2037	142	142	17,854	3,310	2,840	2,840	470	470
2038	142	142	18,239	3,381	2,901	2,901	480	480
2039	142	142	18,632	3,454	2,964	2,964	490	490
2040	142	142	19,035	3,529	3,028	3,028	501	501

*Note: The district is projected to achieve its district-specific 2015 SBx7-7 compliance target through a combination of passive and active savings. For the purpose of this analysis it is assumed that there will be a linear reduction in GPCD from 2015-2020 to achieve the district-specific 2020 SBx7-7 compliance target. GPCD will remain flat from 2020 through 2040.